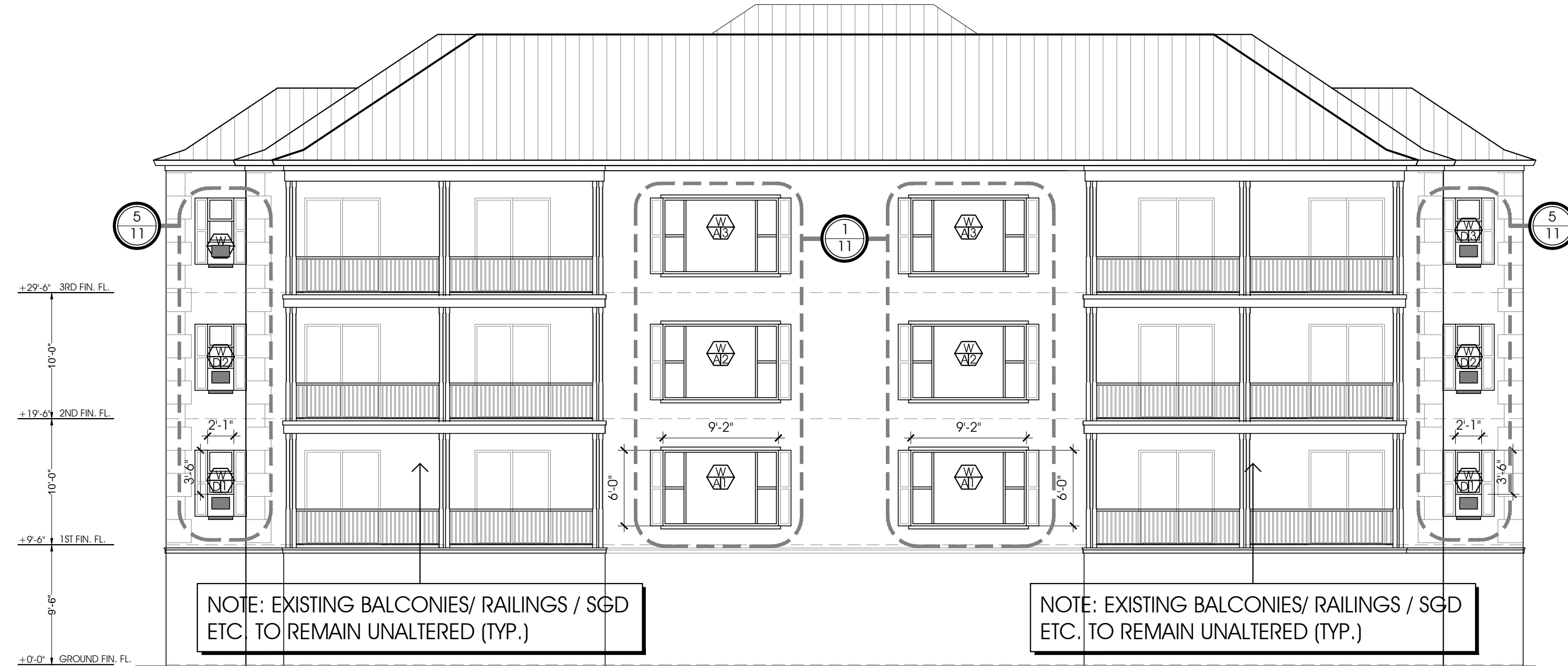
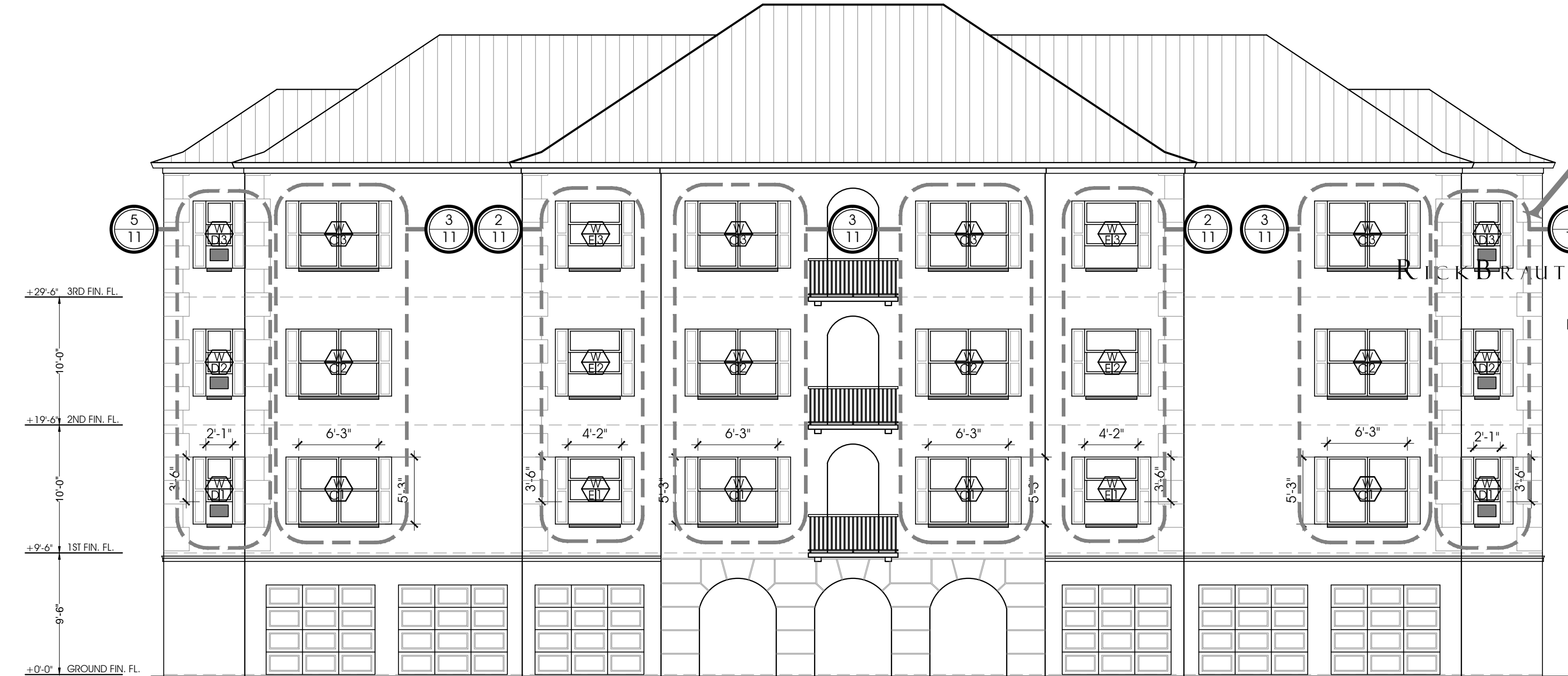


Date:
 Mark Duckett,
 P.E., S.I., S.E.S.C.
 Consulting Structural Engineer
 3844 N.W. 43rd Terr.
 Coconut Creek, FL
 FL Registration P.E. #45196
 S.I. #1040



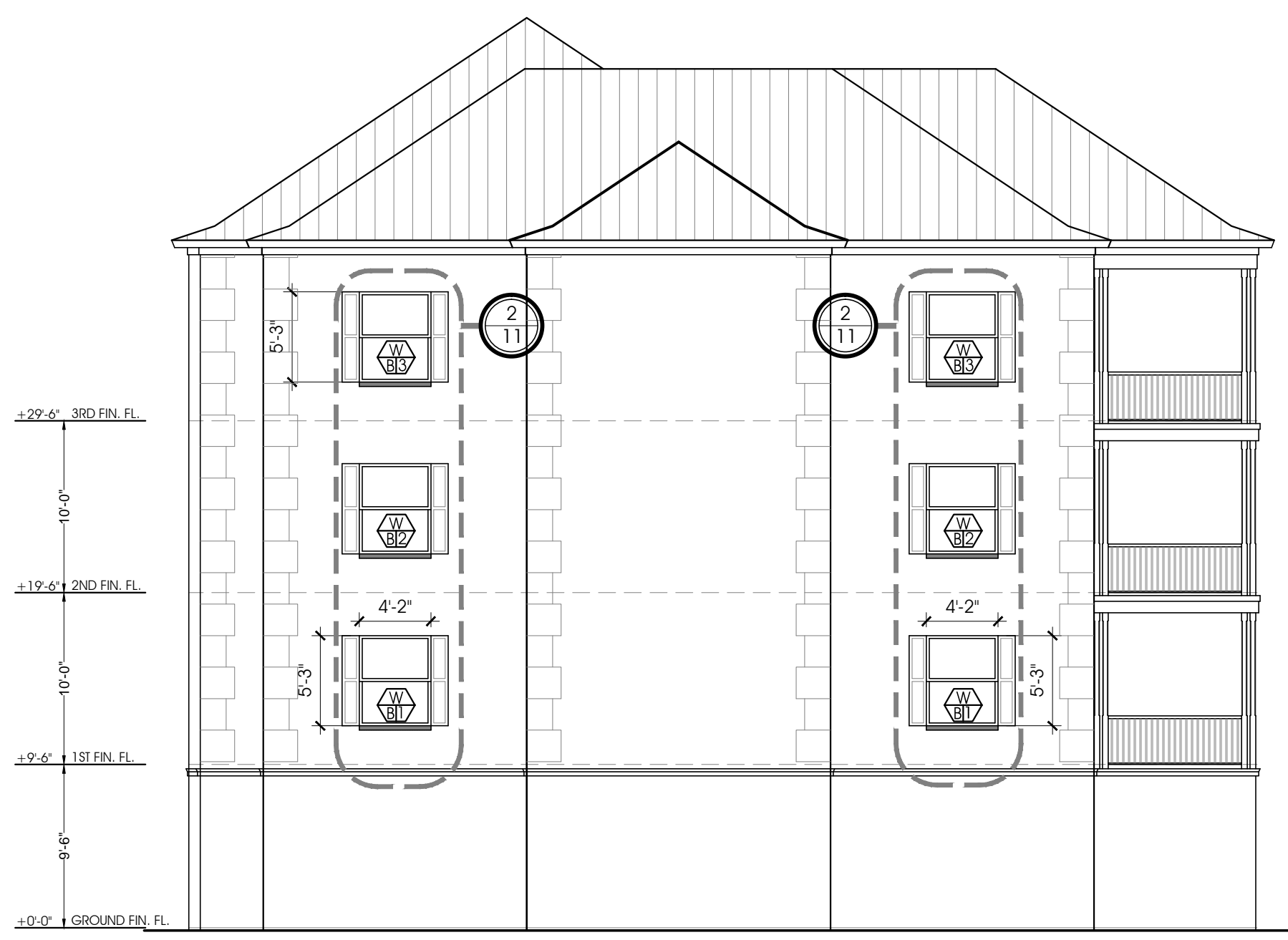
Rear Elevation
 1/8" SC



Front Elevation
 1/8" SC

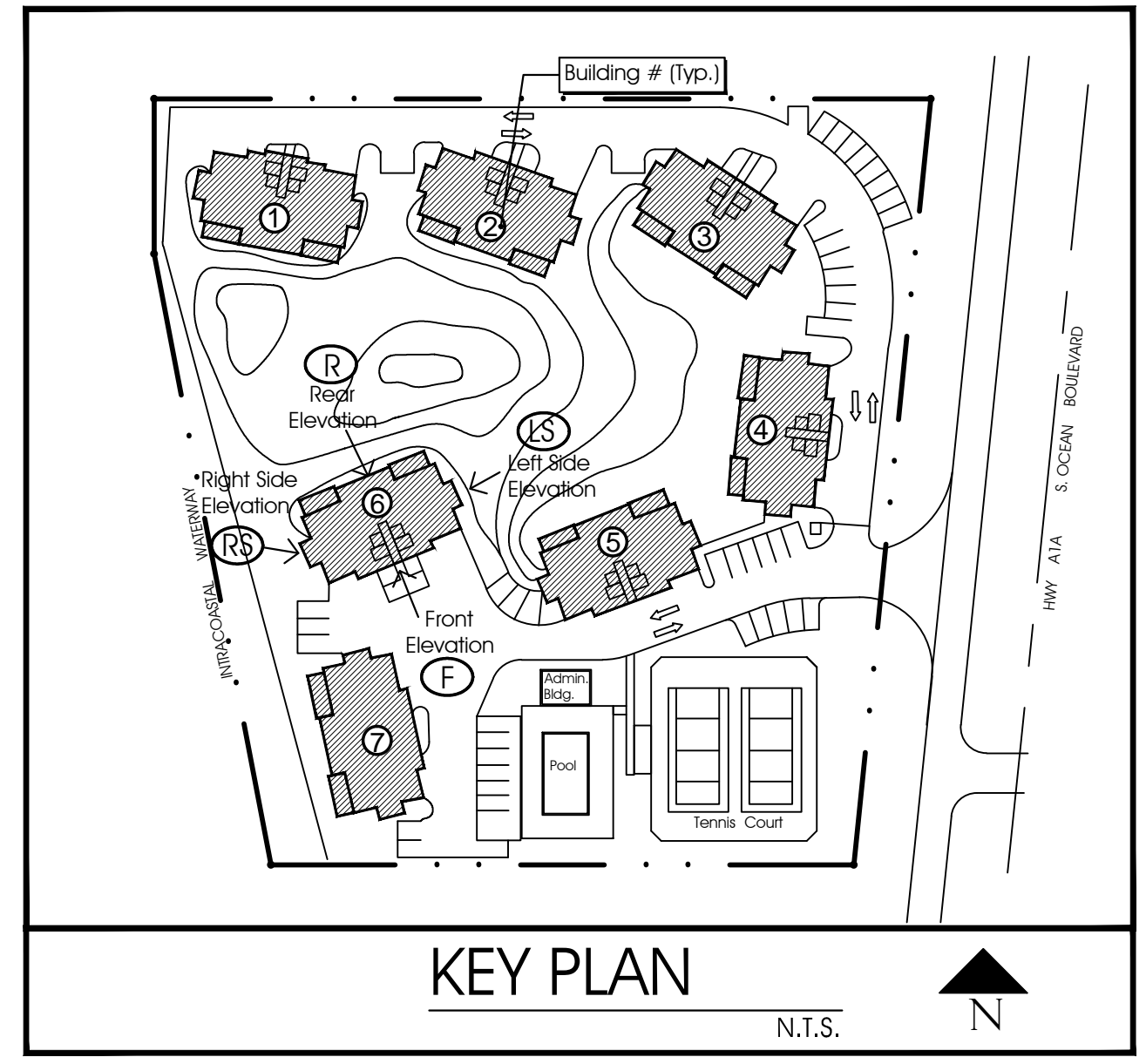
W 111 + 47.2 P.S.F. - 63.2 P.S.F.	W 111 + 42.0 P.S.F. - 46.0 P.S.F.	W 111 + 42.0 P.S.F. - 46.0 P.S.F.	W 111 + 47.2 P.S.F. - 63.2 P.S.F.
W 112 + 47.2 P.S.F. - 63.2 P.S.F.	W 112 + 42.0 P.S.F. - 46.0 P.S.F.	W 112 + 42.0 P.S.F. - 46.0 P.S.F.	W 112 + 47.2 P.S.F. - 63.2 P.S.F.
W 113 + 47.2 P.S.F. - 63.2 P.S.F.	W 113 + 42.0 P.S.F. - 46.0 P.S.F.	W 113 + 42.0 P.S.F. - 46.0 P.S.F.	W 113 + 47.2 P.S.F. - 63.2 P.S.F.

W 111 + 47.2 P.S.F. - 63.2 P.S.F.	W 111 + 43.6 P.S.F. - 47.6 P.S.F.	W 111 + 46.0 P.S.F. - 60.8 P.S.F.	W 111 + 43.6 P.S.F. - 51.8 P.S.F.	W 111 + 43.6 P.S.F. - 51.8 P.S.F.	W 111 + 46.0 P.S.F. - 60.8 P.S.F.	W 111 + 43.6 P.S.F. - 47.6 P.S.F.	W 111 + 47.2 P.S.F. - 63.2 P.S.F.
W 112 + 47.2 P.S.F. - 63.2 P.S.F.	W 112 + 43.6 P.S.F. - 47.6 P.S.F.	W 112 + 46.0 P.S.F. - 60.8 P.S.F.	W 112 + 43.6 P.S.F. - 51.8 P.S.F.	W 112 + 43.6 P.S.F. - 51.8 P.S.F.	W 112 + 46.0 P.S.F. - 60.8 P.S.F.	W 112 + 43.6 P.S.F. - 47.6 P.S.F.	W 112 + 47.2 P.S.F. - 63.2 P.S.F.
W 113 + 47.2 P.S.F. - 63.2 P.S.F.	W 113 + 43.6 P.S.F. - 47.6 P.S.F.	W 113 + 46.0 P.S.F. - 60.8 P.S.F.	W 113 + 43.6 P.S.F. - 51.8 P.S.F.	W 113 + 43.6 P.S.F. - 51.8 P.S.F.	W 113 + 46.0 P.S.F. - 60.8 P.S.F.	W 113 + 43.6 P.S.F. - 47.6 P.S.F.	W 113 + 47.2 P.S.F. - 63.2 P.S.F.



Elevation Right Side
 1/8" SC

W 114 + 44.8 P.S.F. - 48.8 P.S.F.	W 114 + 44.8 P.S.F. - 48.8 P.S.F.
W 115 + 44.8 P.S.F. - 48.8 P.S.F.	W 115 + 44.8 P.S.F. - 48.8 P.S.F.
W 116 + 44.8 P.S.F. - 48.8 P.S.F.	W 116 + 44.8 P.S.F. - 48.8 P.S.F.

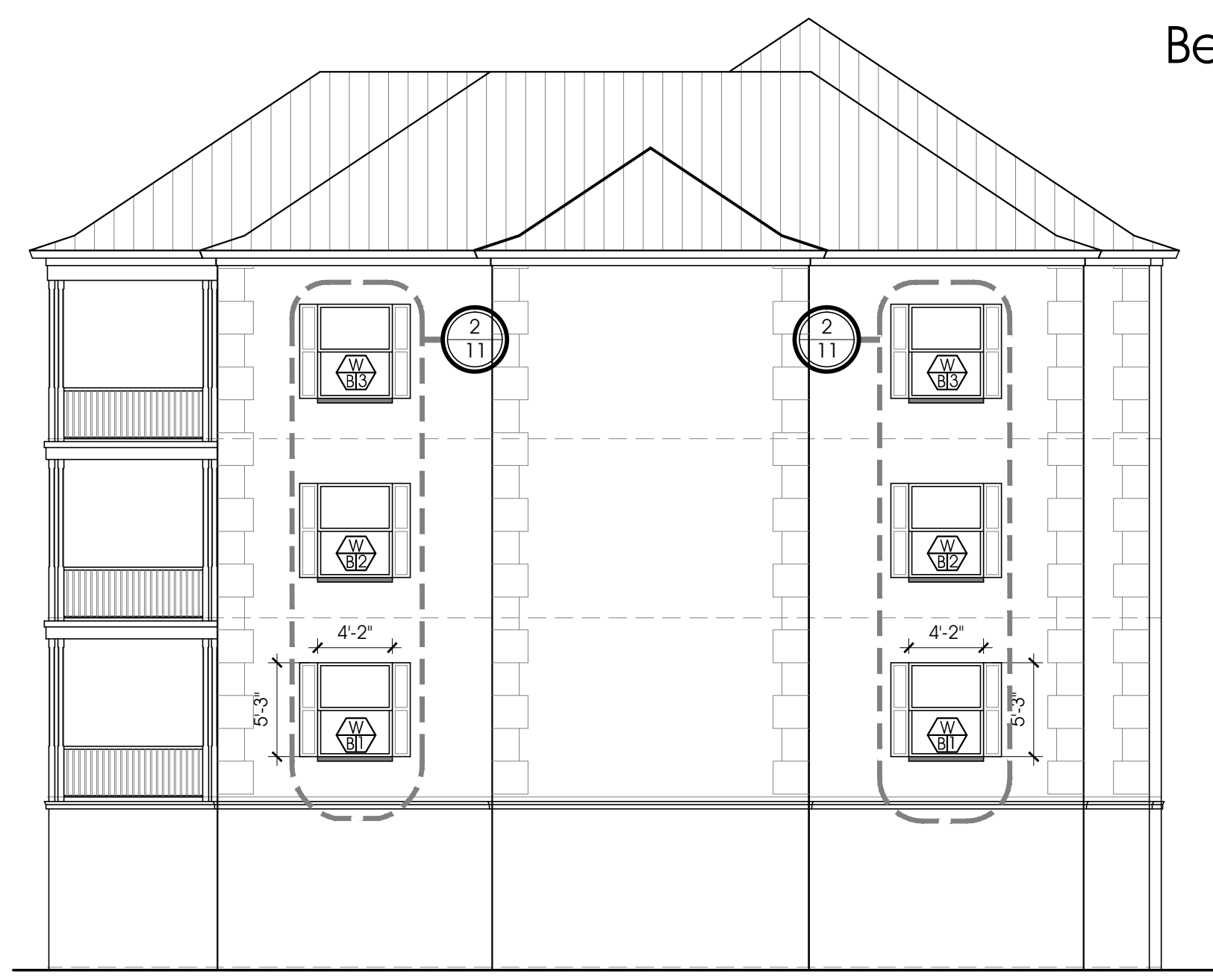


KEY PLAN
 N.T.S.

Finish Notes:

- NEW PGT WINDOWS INSTALLED PER NOA
- NEW 3/8" STUCCO FINISH TO MATCH EXISTING BONDING AGENT
- ALUMINUM COLONIAL SHUTTER BY WILLARD SHUTTER CO. MIAMI, FL. INSTALL PER APPROVED NOA (MATCH EXISTING SHUTTER SPECS.)

Aluminum Colonial Shutters
 ALUMINUM COLONIAL SHUTTER
 BY: WILLARD SHUTTER CO. MIAMI, FL.
 INSTALL PER APPROVED NOA
 (MATCH EXISTING SHUTTER SPECS.)
 4420 NW 35 COURT, MIAMI, FL. 33142

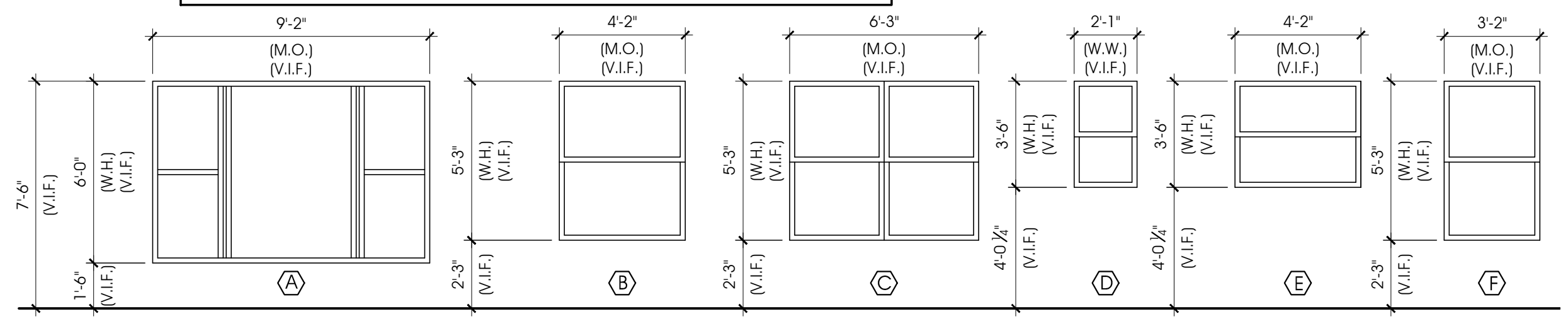
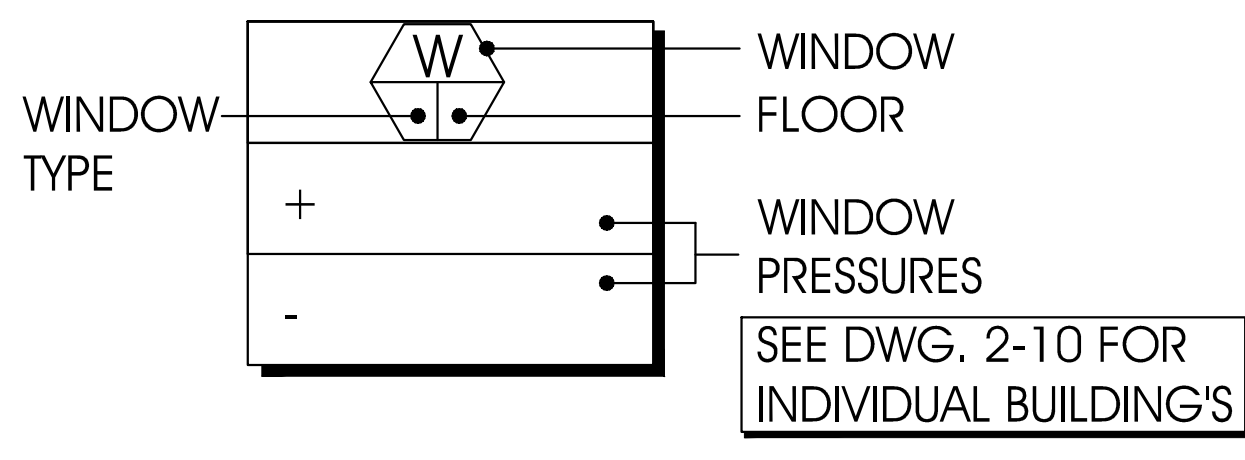


Elevation Left Side
 1/8" SC

W 117 + 44.8 P.S.F. - 48.8 P.S.F.	W 117 + 44.8 P.S.F. - 48.8 P.S.F.
W 118 + 44.8 P.S.F. - 48.8 P.S.F.	W 118 + 44.8 P.S.F. - 48.8 P.S.F.
W 119 + 44.8 P.S.F. - 48.8 P.S.F.	W 119 + 44.8 P.S.F. - 48.8 P.S.F.

MARK	SIZE	TYPE	GLASS	FRAME	TOP AFF	NOA req'd
A	9'-2" (M.O.) 6'-0" (V.I.F.)	Fixed Glass	GREY YES	WHITE Aluminum	Match Exst. Opening	YES
B	4'-2" (M.O.) 5'-3" (V.I.F.)	Single Hung	GREY YES	WHITE Aluminum	*	YES
C	6'-3" (M.O.) 5'-3" (V.I.F.)	Single Hung	GREY YES	WHITE Aluminum	*	YES
D	2'-1" (W.W.) 4'-0 1/2" (V.I.F.)	Single Hung	GREY YES	WHITE Aluminum	*	YES
E	4'-2" (M.O.) 3'-6" (V.I.F.)	Single Hung	GREY YES	WHITE Aluminum	*	YES
F	3'-2" (M.O.) 2'-3" (V.I.F.)	Single Hung	GREY YES	WHITE Aluminum	*	YES

NOTE: ALL WINDOWS BASED ON PGT



Window Elevations

Bermuda High West
 2150 S. Ocean Boulevard
 Delray Beach, Florida
 RBA: PN: 11616.04

Issued
 ○ Permit Set
 ○ G.C. Bid Set
 ○ Owner Review
 ● 9-15-16: Structural Review

BUILDING #6

Proposed Elevations Bldg.6
 4-Story
 1/8" SC

PROGRESS SET/NFC 09/15/2016

ALL LEGENDS, CONCEPTS, AND IDEAS CONTAINED AND REPRESENTED HEREIN ARE THE PROPERTY OF RICK BRAUTIGAN ARCHITECTURE, INC. AND MAY NOT BE ALTERED, CHANGED, MODIFIED OR COPIED WITHOUT THE PERMISSION OF RICK BRAUTIGAN ARCHITECTURE, INC. EXPRESSED IN WRITING.
 1. DRAWINGS ARE NOT TO BE SCALED. WRITTEN DIMENSIONS HAVE PRECEDENCE OVER ALL SCALED DIMENSIONS. 2. CONTRACTOR TO VERIFY ALL DIMENSIONS AND ADVISE ARCHITECT OF ANY DISCREPANCIES. CONSTRUCTION SHALL NOT PROCEED UNTIL SAID DISCREPANCIES HAVE BEEN RESOLVED.
 3. NO MATERIALS OR SYSTEMS ARE TO BE FABRICATED UNTIL ALL DIMENSIONS HAVE BEEN VERIFIED BY CONTRACTOR. SHOP DRAWINGS HAVE BEEN REVIEWED AND ACCEPTED BY THE ARCHITECT.