

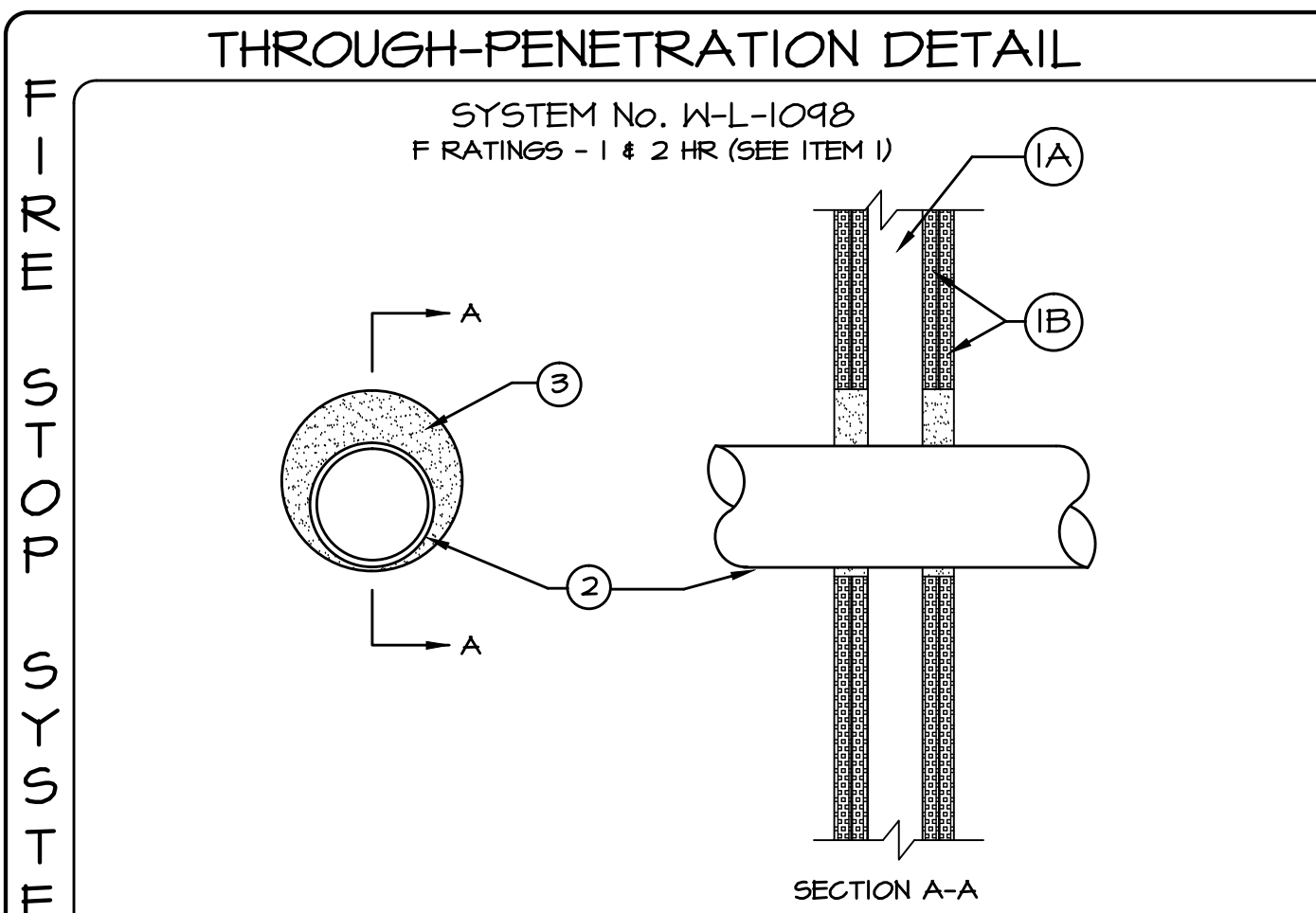
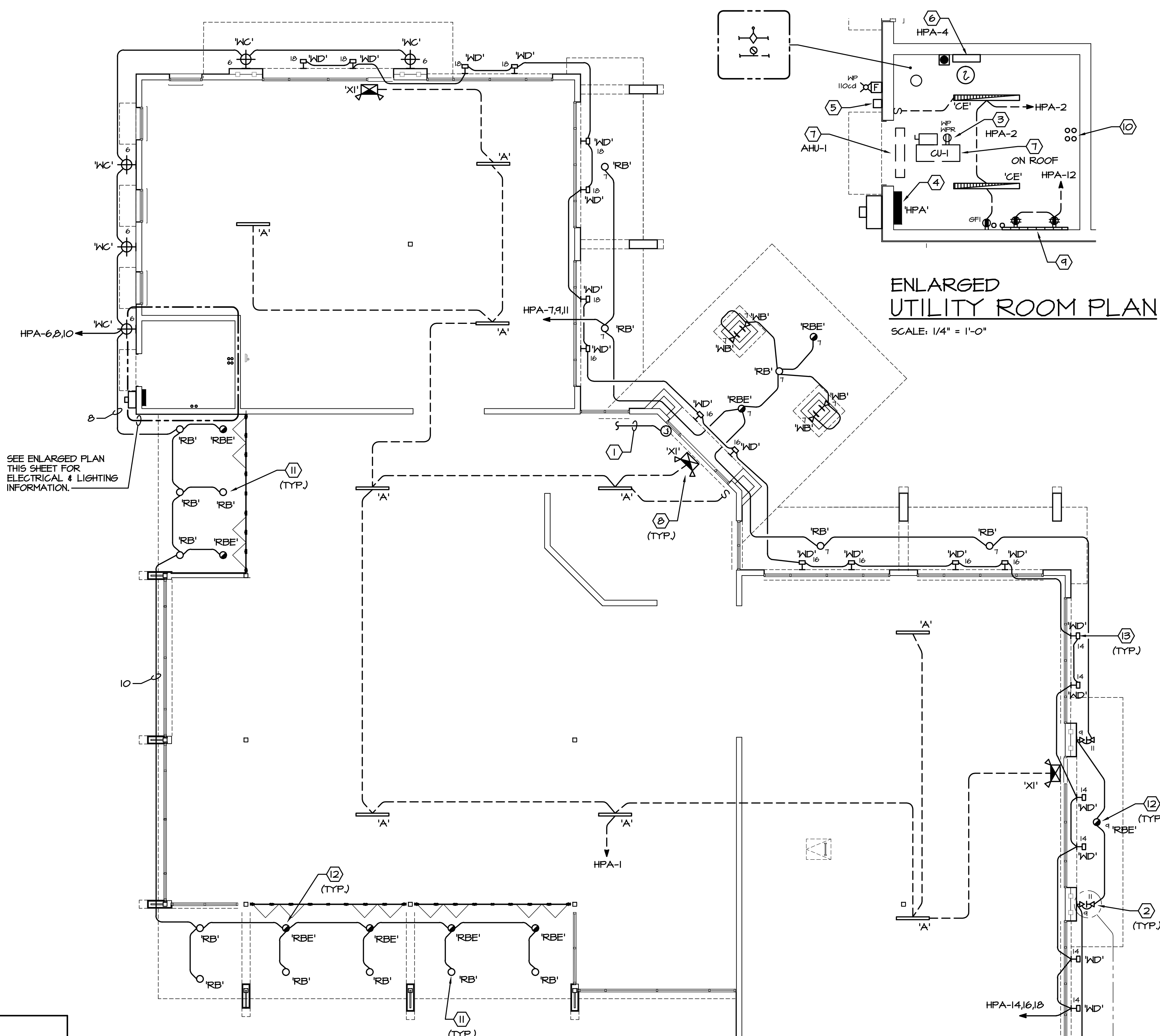
| TYPE | MANUFACT.     | CATALOG No.  | DESCRIPTION  | VOLT | LAMPS                   | MOUNTING                  | REMARKS  | WATTS |
|------|---------------|--|--|------|-------------------------|---------------------------|--|-------|
| A    | DAY-BRITE     | T232-UNV-1/4-EB  | 4-FT. 2-LAMP GENERAL PURPOSE STRIP                     | 120  | (2) F32T8-B35           | SURFACE                   | -  | 58    |
| CE   | DAY-BRITE     | T232-UNV-1/2EB-E5  | 4-FT. 2-LAMP STANDARD STRIP, RAPID START BALLAST       | 120  | (2) F32T8-B35           | CHAN-HUNG AT 8'-0" A.F.F. | WITH 1400 LUMEN BATTERY BALLAST WIRING FOR TWO LAMPS | 58    |
| WA   | BK LIGHTING   | B-DS-NR-0380-CBA-10-A-360SL-B-PC-TRE20-CBA-1-I-20                        | WALL MOUNTED EXTERIOR LED FIXTURE, POINTING DOWN       | 120  | SORAA-SM16-OT-36D-440-3 | WALL MOUNT                | WALL LED FIXTURE AIMING DOWN                         | 15    |
| WB   | BK LIGHTING   | B-DS-NR-0380-CBA-10-A-360SL-B-PC-TRE20-CBA-1-I-20                        | WALL MOUNTED EXTERIOR LED FIXTURE, POINTING UP         | 120  | SORAA-SM16-OT-36D-440-3 | WALL MOUNT                | WALL LED FIXTURE AIMING UP                           | 15    |
| WC   | VISA LIGHTING | 0N2300-L40K-MED-CBA  | UP/DOWN LED CYLINDER                                   | 120  | L.E.D.                  | WALL MOUNT                | -  | 30    |
| WD   | EATON         | 303-SHLEDB2-4000-INV-T5X-DIM10-CBA-36-LCF                                | LED SIGN LIGHT   | 120  | L.E.D.                  | WALL MOUNT                | -  | 16    |
| RB   | PHILIPS       | FRAME-P4R-D-15-N-210-U-VB/ LTG ENG-P4R-D-8-40-VB/ REFLECTOR-P4R-D-CC/    | 6" LED DOWN LIGHT                                      | 120  | L.E.D.                  | RECESSED                  | -  | 20    |
| RBE  | PHILIPS       | FRAME-P4R-D-20-N-210-U-VB-EM/ LTG ENG-P4R-D-8-40-VB/ REFLECTOR-P4R-D-CC/ | 6" LED DOWN LIGHT WITH BATTERY                         | 120  | L.E.D.                  | RECESSED                  | WITH EMERGENCY BATTERY                               | 20    |
| XI   | DUAL LITE     | LTURN  | EMERGENCY LIGHT/EXIT SIGN COMBINATION WITH RED LETTERS | 120  | L.E.D.                  | UNIVERSAL                 | WITH BATTERY PACK                                    | 10    |

CBA = COLOR SELECTED BY ARCHITECT.

**LIGHTING FIXTURE SCHEDULE NOTES:**

- ALL FLUORESCENT LIGHTING FIXTURES SHALL HAVE ENERGY SAVING T5, T5HO, OR T8 LAMPS WITH ELECTRONIC BALLASTS AS SHOWN IN THE SCHEDULE.
- PROVIDE NECESSARY MOUNTING HARDWARE AND ACCESSORIES. ALL FIXTURES, ACCESSORIES SHALL INCLUDE ALL HARDWARE TO MOUNT FIXTURES AS SHOWN ON SCHEDULES AND/OR DESCRIBED IN THE NOTES.
- ALL FIXTURE SUBSTITUTIONS MUST BE SUBMITTED FOR APPROVAL (EQUALS ONLY).
- BALLASTS SHALL BE AS MANUFACTURED BY ADVANCE AS FOLLOWS: NO SUBSTITUTION.
  - T8 BALLASTS - ADVANCE:** OPTIMUM SERIES ELECTRONIC PROGRAMMED START, UNIVERSAL VOLTAGE.
  - T5 BALLASTS - ADVANCE:** ELECTRONIC PROGRAMMED START, UNIVERSAL VOLTAGE.
- ALL EMERGENCY, EXIT, AND NIGHT LIGHT FIXTURES SHALL BE CONNECTED AHEAD OF LOCAL SWITCHES, RELAYS, OR CONTACTORS UNLESS OTHERWISE NOTED.
- ALL PRE SUBMITTALS SHALL BE ACCOMPANIED WITH PHOTOMETRIC DATA.
- ALL FIXTURES SHALL BE SUPPORTED FROM STRUCTURE AND NOT FROM SUSPENDED CEILING SYSTEM.
- EQUAL ACCEPTED MANUFACTURERS ARE: DAY-BRITE, METALUX, LTHONIA, AND COLUMBIA. EVEN THOUGH THESE MANUFACTURERS ARE ACCEPTED A TEN DAY PRIOR APPROVAL MUST BE SUBMITTED FOR EVALUATION.

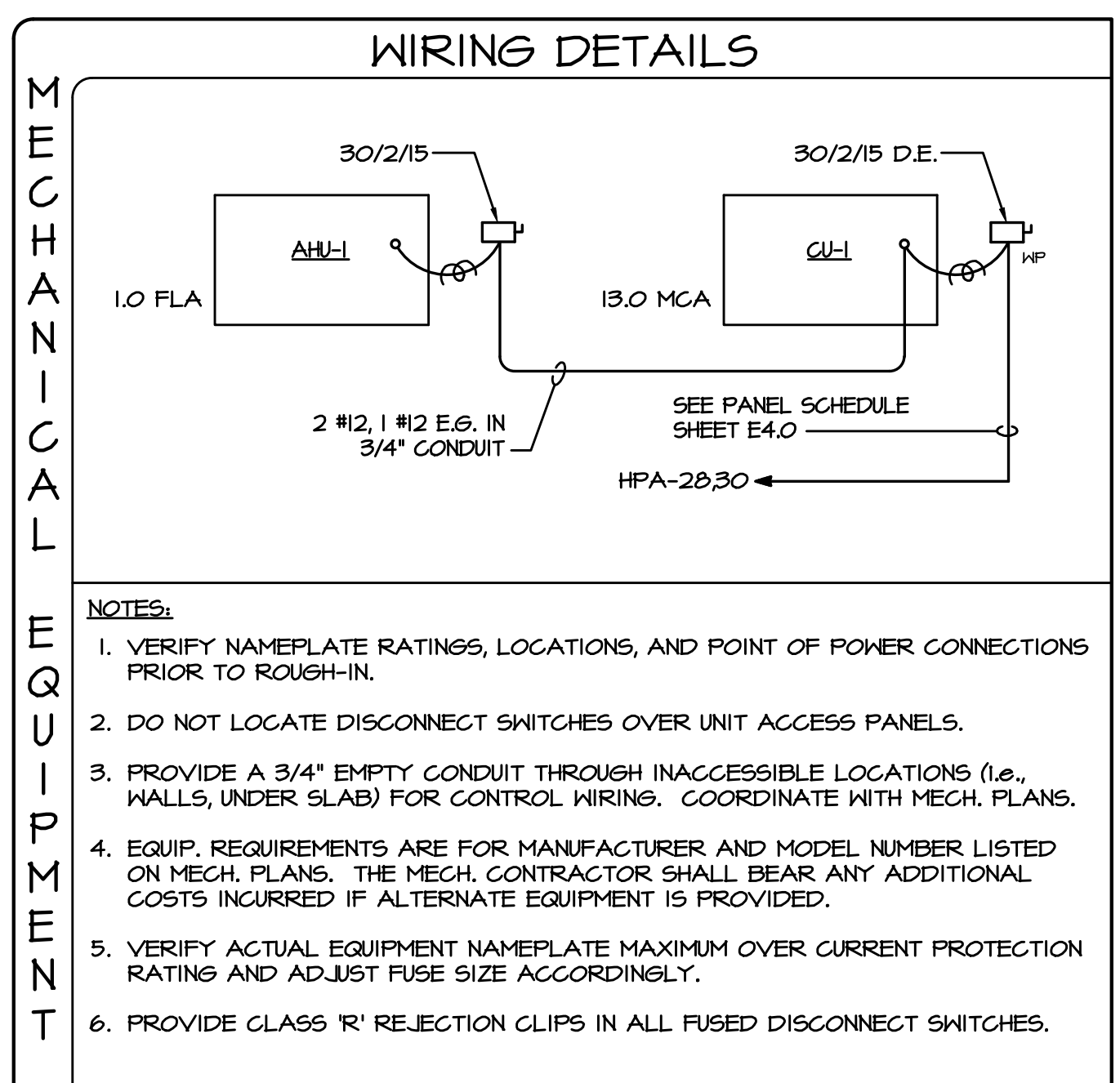
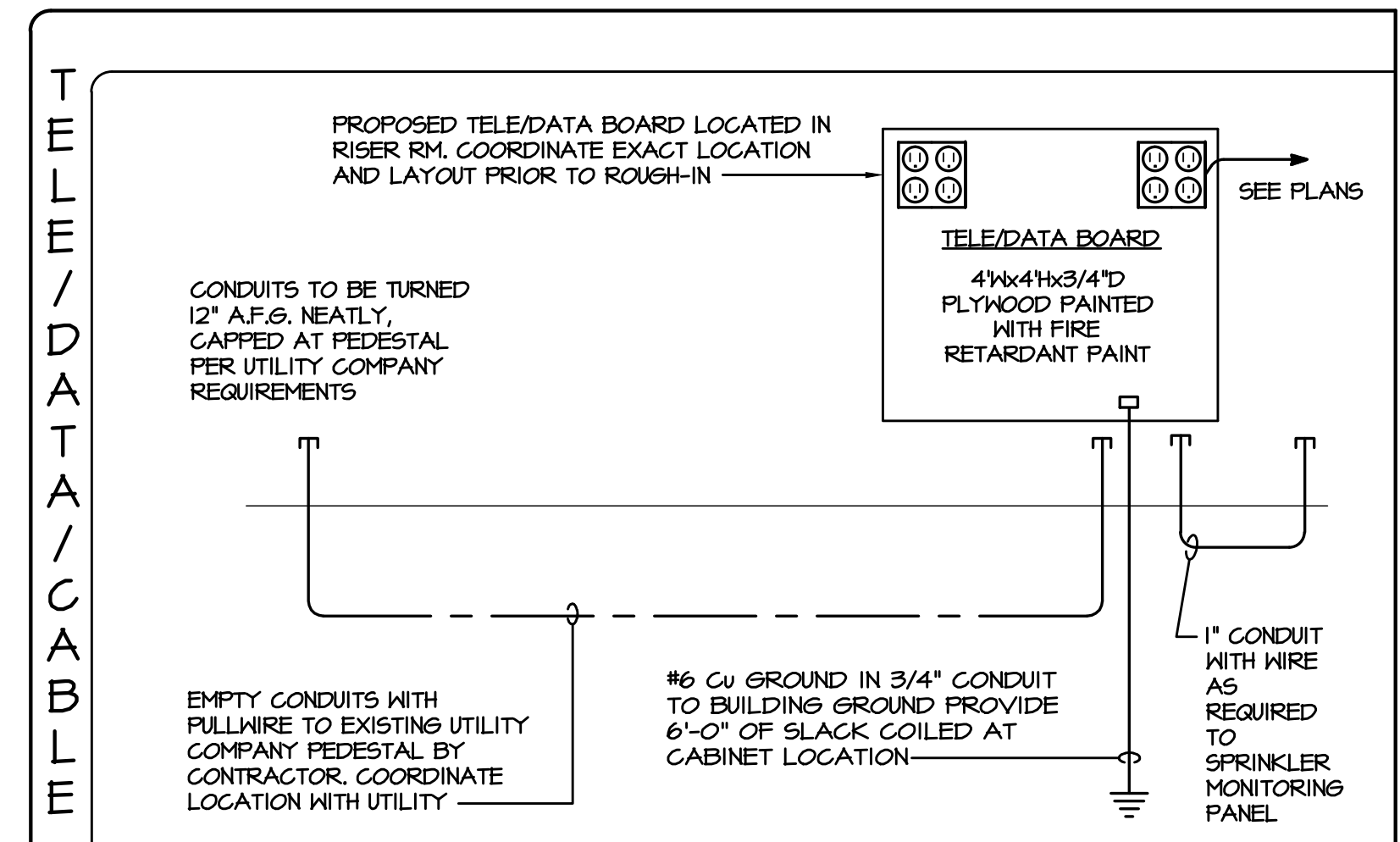
- CATALOG NUMBER ON FIXTURE SCHEDULE MAY NOT REFERENCE EVERY HARDWARE COMPONENT REQUIRED TO MOUNT FIXTURE AS INTENDED. VERIFY WITH MANUFACTURER FOR PROPER MOUNTING HARDWARE AND ANY ADDITIONAL COMPONENTS REQUIRED TO MOUNT FIXTURE AS INTENDED OR SHOWN.
- ALL LINEAR TYPE FLUORESCENT LUMINAIRES SHALL COMPLY WITH N.E.C. 410.18(G) FOR BALLAST DISCONNECT.
- LAMPS SHALL BE ENERGY SAVING WITH COLOR TEMPERATURE AS SHOWN ON SCHEDULE WITH MINIMUM CRI OF 82.
- LAMPS SHALL BE BY SYLVANIA, G.E., OR PHILIPS, EXCEPT WHEN SUCH LAMPS ARE NOT AVAILABLE FROM THESE MANUFACTURERS, OR SPECIFIED OTHERWISE IN SCHEDULE.
- SHOP DRAWINGS SHALL INCLUDE:
  - COMPLETE FIXTURE CUT SHEETS INCLUDING PHOTOMETRICS.
  - BALLAST CUT SHEETS.
  - WHERE COLOR SELECTION IS REQUIRED, COLOR CHART SHALL BE PROVIDED WITH THE SHOP DRAWINGS FOR SELECTION BY ARCHITECT/OWNER.
  - LAMP CUT SHEETS.
- NOTES:
  - SHOP DRAWINGS SHALL BE PREPARED BY MANUFACTURER'S REPRESENTATIVE, AND NOT BY CONTRACTOR.
  - CONTRACTOR SHALL PROVIDE ALL OF THE REQUIRED DATA LISTED ABOVE WITH THE SHOP DRAWINGS.
- UNLESS OTHERWISE NOTED, (NL) DENOTES A 'NIGHT LIGHT' FIXTURE. NIGHT LIGHT FIXTURES SHALL BE UNSWITCHED. EMERGENCY BALLAST SHALL BE TIED TO A CONSTANT HOT AHEAD OF LOCAL SWITCHING AND/OR CONTROL PANEL.
- BATTERY BALLAST IN THE FLUORESCENT FIXTURES SHALL BE UL 924 LISTED AND COMPLY WITH NFPA 101 LIFE SAFETY CODE SECTION 7.4. THE SYSTEM SHALL BE PERIODICALLY TESTED PER NFPA 101 SECTION 7.4.3.1.1.



- WALL ASSEMBLY - THE 1 OR 2 HR FIRE RATED GYPSUM WALLBOARD/STUD WALL ASSEMBLY SHALL BE CONSTRUCTED OF THE MATERIALS AND IN THE MANNER SPECIFIED IN THE INDIVIDUAL U300 OR U400 SERIES WALL AND PARTITION DESIGNS IN THE UL FIRE RESISTANCE DIRECTORY AND SHALL INCLUDE THE FOLLOWING CONSTRUCTION FEATURES:
  - STUDS - WALL FRAMING MAY CONSIST OF EITHER WOOD STUDS OR STEEL CHANNELS STUDS. WOOD STUDS TO CONSIST OF NOM 2 BY 4 IN. LUMBER SPACED 16 IN. O.C. STEEL STUDS TO BE MIN 3-5/8 IN. WIDE AND SPACED MAX 24 IN. O.C.
  - WALLBOARD, GYPSUM\* - THICKNESS, TYPE, NUMBER OF LAYERS AND FASTENERS AS SPECIFIED IN THE INDIVIDUAL WALL AND PARTITION DESIGN. MAX DIAM OF OPENING IS 14-1/8 IN. THE HOURLY FIRE RATING OF THE FIRESTOP SYSTEM IS EQUAL TO THE HOURLY FIRE RATINGS OF THE WALL ASSEMBLY IN WHICH IT IS INSTALLED.
- THROUGH PENETRANTS - ONE METALLIC PIPE, CONDUIT OR TUBING INSTALLED EITHER CONCENTRICALLY OR ECCENTRICALLY WITHIN THE FIRESTOP SYSTEM. THE ANNULAR SPACE BETWEEN PIPE, CONDUIT OR TUBING AND PERIPHERY OF OPENING SHALL BE MIN 3/8 IN. TO MAX 1 IN. PIPE, CONDUIT OR TUBING TO BE RIGIDLY SUPPORTED ON BOTH SIDES OF WALL ASSEMBLY. THE FOLLOWING TYPES AND SIZES OF METALLIC PIPES, CONDUITS OR TUBING MAY BE USED:
  - STEEL PIPE
  - IRON PIPE
  - CONDUIT - NOMINAL 4 IN. DIAM (OR SMALLER) STEEL ELECTRICAL METALLIC TUBING (EMT) OR STEEL CONDUIT. WHEN EMT OR STEEL CONDUIT IS USED IT RATING IS 1/4 HR.
  - COPPER PIPE
  - COPPER PIPE
- FILL, VOID OR CAVITY MATERIAL\* - SEALANT - MIN 5/8 IN. AND 1-1/4 IN. THICKNESS OF FILL MATERIAL FOR 1 AND 2 HR RATED WALL ASSEMBLIES, RESPECTIVELY, APPLIED WITHIN THE ANNULUS, FLUSH WITH BOTH SURFACES OF WALL.
 

FIRESTOP SYSTEMS, INC. - 4800DN

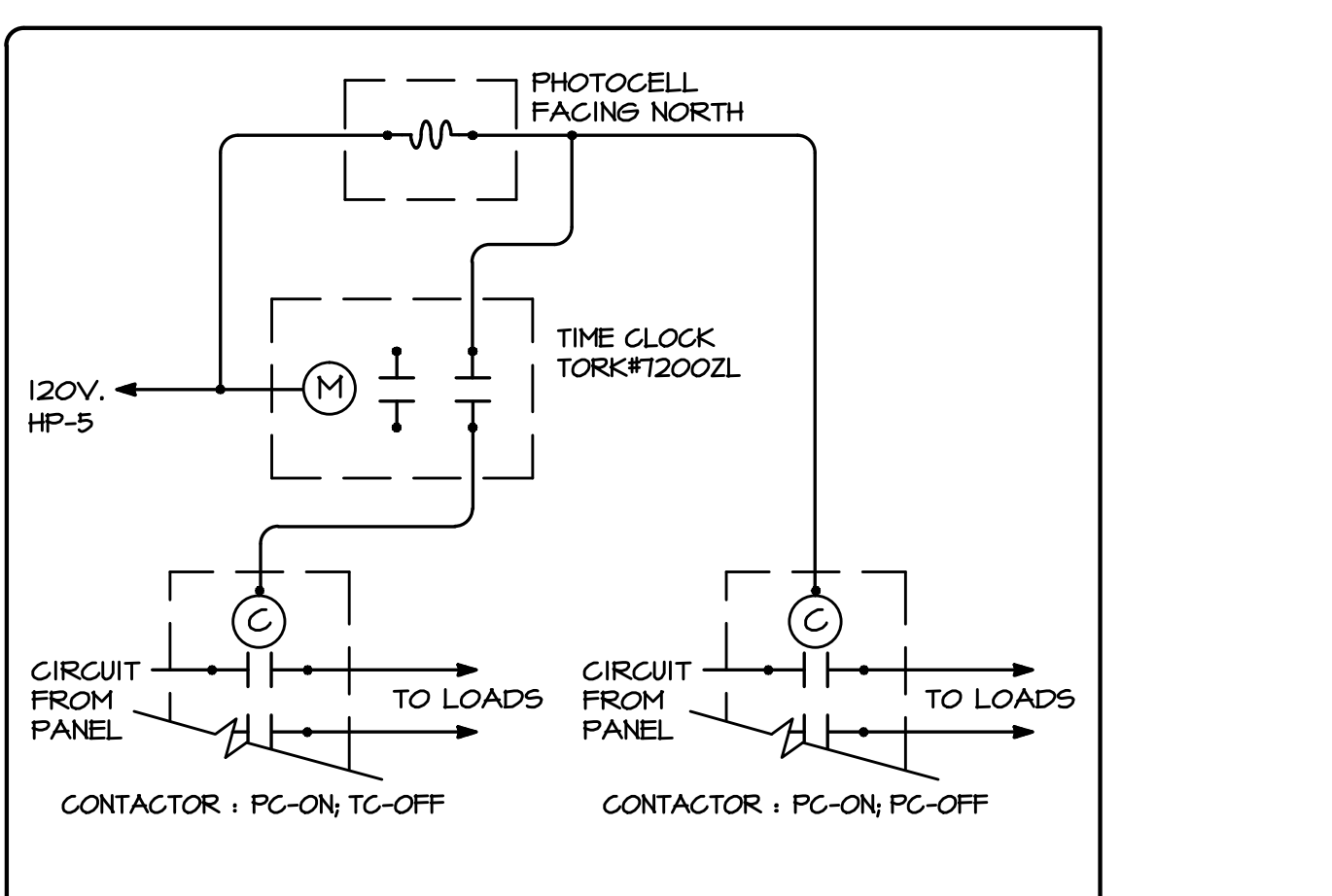
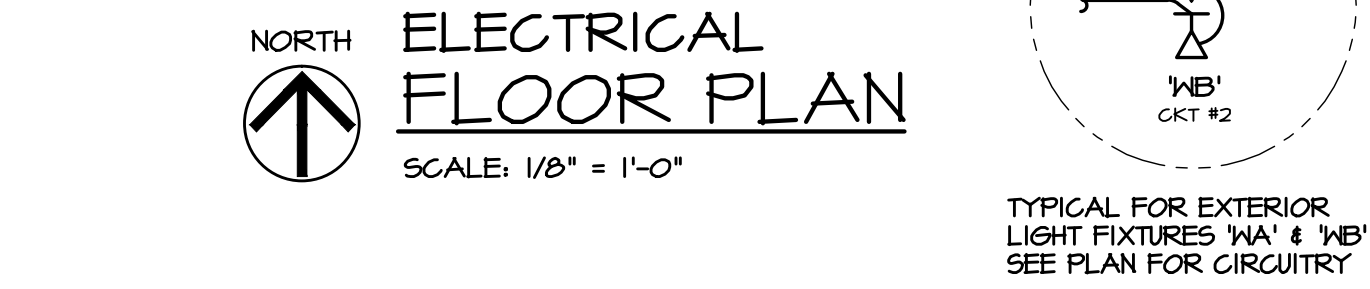
\* BEARING THE U.L. CLASSIFICATION MARKINGS.



- NOTES**
- PROVIDE WEATHERPROOF JUNCTION BOX FOR SIGNAGE WITH 3/4" CONDUIT STUBBED INTO SPACE AT ACCESSIBLE LOCATION. WIRING, DISCONNECT SWITCHES, AND FINAL CONNECTION BY TENANT IMPROVEMENT CONTRACTOR. COORDINATE EXACT LOCATION WITH OWNER AND TENANT. J-BOX SHALL BE LOCATED WITHIN 6'-0" OF THE SIGN.
  - TWO LIGHT FIXTURES, ONE AIMED UPWARD AND ONE AIMED DOWNWARD. SEE ARCHITECTURAL ELEVATIONS FOR EXACT MOUNTING HEIGHTS AND LOCATION AND PROVIDE ACCORDINGLY. UP AIMED LIGHTS SHALL BE TIED TO ONE CIRCUIT AND THE DOWN AIMED LIGHTS SHALL BE TIED TO THE OTHER CIRCUIT.
  - ROOF TOP UNIT MAINTENANCE RECEPTACLE MOUNTED ON SIDE OF THE UNIT. COORDINATE EXACT LOCATION WITH MECHANICAL CONTRACTOR PRIOR TO ROUGH-IN.
  - ELECTRICAL HOUSE SERVICE LOCATION. REFER TO POWER RISER DIAGRAM ON SHEET E4.0 FOR ADDITIONAL INFORMATION.
  - COORDINATE INSTALLATION OF KNOX BOX WITH LOCAL FIRE MARSHAL PRIOR TO ROUGH-IN. MOUNT AT 5'-0" A.F.F.
  - SPRINKLER MONITORING SYSTEM PANEL SEE SHEET E3.0 FOR ADDITIONAL INFORMATION.
  - HVAC EQUIPMENT. REFER TO MECHANICAL EQUIPMENT HIRING DETAIL ON THIS SHEET FOR ADDITIONAL INFORMATION. COORDINATE WITH MECHANICAL CONTRACTOR PRIOR TO PERFORMING ANY WORK ASSOCIATED TO THIS EQUIPMENT.
  - TELE/ DATA BOARD. REFER TO DETAIL ON THIS SHEET FOR ADDITIONAL INFORMATION. VERIFY POINT OF CONNECTION WITH SERVICE PROVIDERS, AND EXACT LOCATION OF TELE/ DATA BOARD WITH OWNER PRIOR TO ROUGH-IN.
  - PROVIDE SPARE CONDUITS FOR FUTURE ELECTRICAL SERVICE. SEE SHEET E4.0.
  - RECESSED DOWN LIGHT.
  - RECESSED DOWN LIGHT WITH BATTERY.
  - SIGN LIGHTER FIXTURE. COORDINATE FIXTURE FINAL LOCATION WITH ARCHITECT PRIOR TO ROUGH IN.

**CONDUIT STUB-UP NOTE:**  
COORDINATE ALL STUB-UP LOCATIONS AND REQUIREMENTS WITH OWNER PRIOR TO ROUGH-IN. PROVIDE PULL WIRE FOR ALL EMPTY CONDUITS. GAP AND LABEL EACH CONDUIT STUB-UP.

**WIRE SIZING NOTE:**  
WHERE WIRE SIZES ARE SHOWN ON DRAWING OR PANEL SCHEDULE, THE SAME WIRE SIZE, AS A MINIMUM, SHALL BE CARRIED THROUGHOUT THE CIRCUIT. TYPICAL FOR ALL DRAWINGS.



**TYPICAL PHOTOCELL/TIMECLOCK CONTROL DIAGRAM**  
NO SCALE

NOTE: TIME CLOCK SHALL BE SET FOR "ON" AT 4:00 PM AND "OFF" AS DIRECTED BY OWNER. THESE SETTINGS WILL ALLOW THE PHOTOCELL TO PERFORM THE "ON" FUNCTION OF ALL THE EXTERIOR LIGHTING, AND ALLOW FOR THE OVERRIDE TO SHUT OFF PRE-SELECTED LIGHTING AT OWNER'S DISCRETION.

**CHEHAYEB & ASSOCIATES, INC.**  
CONSULTING PROFESSIONAL ENGINEERS  
3702 AZURE ST. TAMPA, FL 33609 (813) 876-1415 (fax) 876-0913  
LIC. #49521 SOUTH FLORIDA CERT. #7340 16-115 (5)

**api+**  
2709 Rocky Point Dr. 201 T 813 + 281 9299  
Tampa, Florida 33607 USA F 813 + 281 9292  
License No AAC001935 **apiplus.com**

BULLETIN LOG

○

○

○

○

○

○

○



**WESTLAKE VISITOR CENTER**  
CITY OF WESTLAKE PALM BEACH COUNTY, FLORIDA

ISSUE DATE: - 09-30-16  
ISSUED FOR: PERMIT - BUILDING SHELL ONLY  
© AS DATED ARCHITECTURE PLUS INTERNATIONAL, INC.

REVISION LOG

△

△

△

△

△

△

△

△

STATE REGISTRATIONS

|               |           |
|---------------|-----------|
| FL #16A001935 | NC #5551  |
| SC #6109      | GA #10079 |
| TN #00102675  |           |

**WESTLAKE VISITOR CENTER**  
PROJECT NAME

**ELECTRICAL FLOOR PLANS**  
SHEET NAME

PROJECT NUMBER: 2016.037

DRAWN BY: R.R. CHECKED BY: S.C.

SCALE: **E2.0**  
SHEET NUMBER

P:\161615\WEEK BUILDINGS\WESTLAKE VISITOR CENTER\161615\_21\_0 ELECTRICAL FLOOR PLANS.dwg, 10/5/2016 3:44:32 PM, RCH/Johnson