



ARCHITECT
 SLATTERY & ASSOCIATES
 2060 N.W. BOCA RATON BLVD.
 BOCA RATON, FLORIDA 33431
 TEL (561) 392-3848
 CONTACT: KEITH BEAL, SENIOR ASSOCIATE

PROPOSED PROJECT FOR: ACTIVITY CENTER FLORENCE FULLER CHILD DEVELOPMENT CENTERS



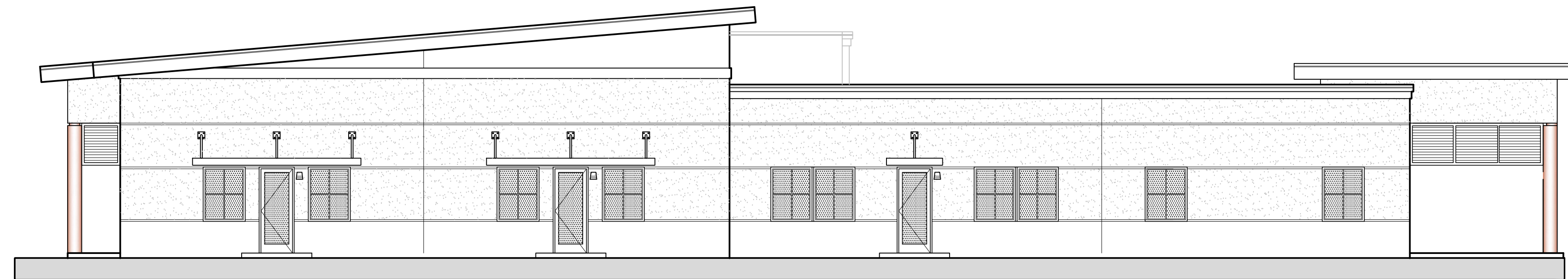
OWNER
 FLORENCE FULLER CHILD DEVELOPMENT
 CENTERS
 200 NE 14th STREET
 BOCA RATON, FLORIDA 33432
 TEL (561) 391-7274
 REP.: RICHARD BLUESTEIN

CONTRACTOR
 T.B.D.
 T.B.D.
 T.B.D.
 TEL: T.B.D.
 CONTACT: T.B.D.

**WEST CAMPUS
 S.W. 185TH STREET
 BOCA RATON, PALM BEACH COUNTY, FLORIDA**



**PLANNER /
 LANDSCAPE ARCHITECT**
 COTLEUR & HEARING
 1934 COMMERCE LANE, SUITE 1
 JUPITER, FLORIDA 33458
 TEL (561) 747-3636
 CONTACT: YEXSY SCHOMBERG, SEN. PLANNER



SURVEY / CIVIL ENG'R.
 MICHAEL B. SCHORAH & ASSOCIATES, INC.
 1850 FOREST HILL BLVD., SUITE 206
 WEST PALM BEACH, FLORIDA 33406
 TEL (561) 968-0080
 CONTACT: JORGE VALLE, P.E.



STRUCTURAL ENGINEER
 O.N.M. & J., INC.
 321 LA KIRKSEY STREET, SUITE 200
 WEST PALM BEACH, FLORIDA 33401
 TEL (561) 835-9994
 CONTACT: PHILIP RIZZO, P.E.

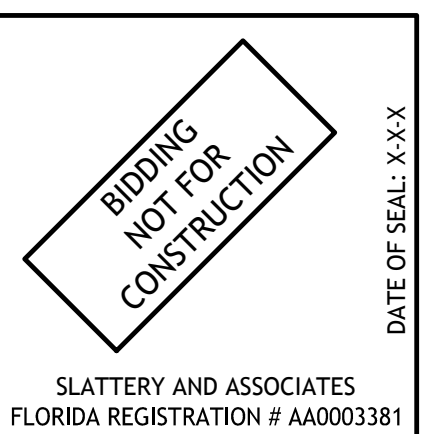
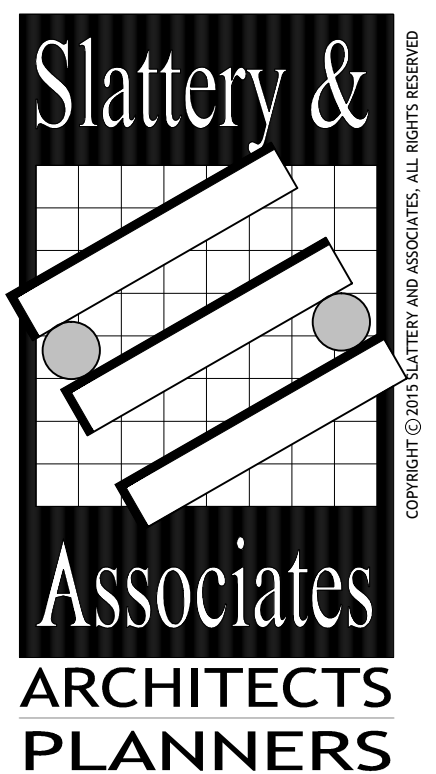


M.E.P. ENGINEER
 KAMM CONSULTING
 1407 W. NEWPORT CENTER DRIVE
 DEERFIELD BEACH, FLORIDA 33442
 TEL (954) 949-2200
 CONTACT: JOHN CHIRGWIN, P.E.



INTERIOR DESIGNER
 in-design, inc.
 2080 N.W. BOCA RATON BLVD., SUITE #2
 BOCA RATON, FLORIDA 33431
 TEL (561) 620-8185
 CONTACT: JENNA SANTAMARIA, SEN. DESIGNER

**CONSTRUCTION DOCUMENT SET
 OCTOBER 21, 2016**



PROJECT TITLE	PROPOSED ACTIVITY CENTER FLORENCE FULLER
PROJECT ADDRESS	WEST CAMPUS BOCA RATON, FLORIDA
PROJECT NUMBER	2011-64
DRAWING NUMBER	A000