

REVISIONS	BY

**Slattery & Associates**  
**ARCHITECTS PLANNERS**  
 2060 NW BOCA RATON BLVD.  
 SUITE 2  
 BOCA RATON, FL 33431  
 TEL: 561-392-3848  
 FAX: 561-392-5402  
 WWW.SLATTERYARCHITECTS.COM

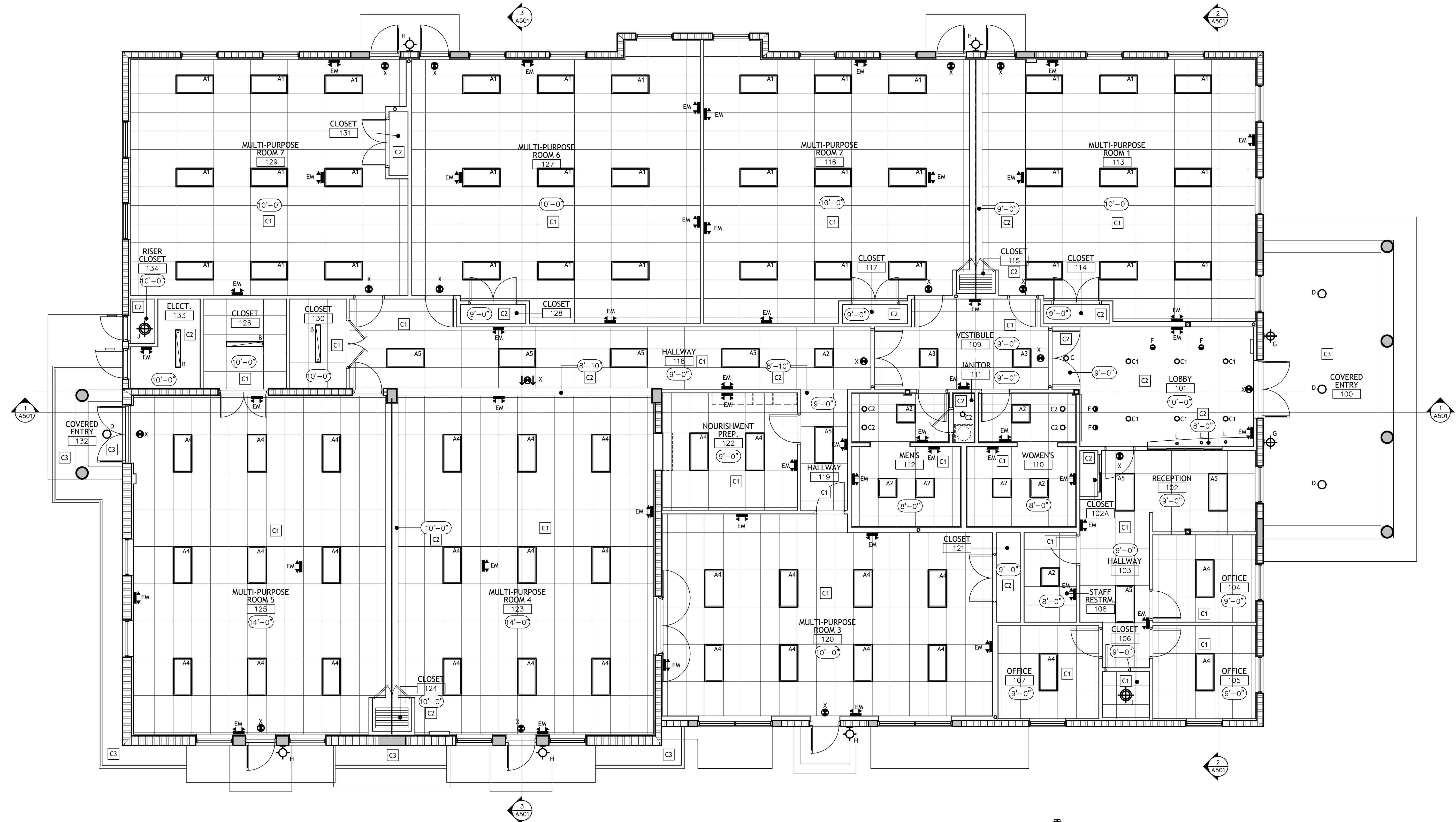
**ACTIVITY CENTER FOR FLORENCE FULLER CHILD DEVELOPMENT CENTERS WEST CAMPUS**  
 S.W. 185TH STREET  
 BOCA RATON, PALM BEACH COUNTY, FLORIDA

**BIDDING NOT FOR CONSTRUCTION**  
 SEAL DATE: X-X-X  
 SLATTERY & ASSOCIATES  
 FLORIDA REGISTRATION # AA000381

**REFLECTED CEILING PLAN**

DRAWN: CR, DR, AB  
 CHECKED: KB  
 DATE: 10-21-16  
 SCALE: AS NOTED  
 JOB NO.: 2011-64  
 SHEET: **A351**

PHASE: C.D. SET 10-21-16



**REFLECTED CEILING PLAN**

SCALE: 3/16" = 1'-0"

CEILING FINISHES	
C-1	ACOUSTICAL CEILING TILE MANUFACTURER- ARMSTRONG ITEM - CORTEGA #747 SIZE - 24 x 48 COLOR - WHITE EDGE - SQUARE GRID - 15/16" W. SUSPENSION SYS. - STANDARD SUSPENSION GRID COLOR - WHITE - PRELUDE (SEE CLG PLAN & SCHEDULE FOR LOCATIONS)
C-2	PAINTED GYPSUM WALLBOARD MANUFACTURER- USG INTERIORS INC. ITEM - STANDARD G.W.B. PANELS SIZE - 1/2" COLOR - WHITE (OR PER ID DWGS.) EDGE - SQUARE (SQ) SUSPENSION SYS. - STANDARD SUSPENDED MTL. FRAME
C-3	PAINTED KNOCK DOWN SMOOTH TEXTURED STUCCO ON GALV. METAL LATH OVER ATT. TO DENSGLOSS GOLD EXTERIOR SHEATHING

- RCP NOTES**
- CONTRACTOR SHALL REVIEW BOTH ARCHITECTURAL AND ELECTRICAL LIGHTING PLANS FOR LIGHT LOCATIONS AND QUANTITY. CONTRACTOR SHALL NOTIFY ARCHITECT OF ANY DISCREPANCIES.
  - CONTRACTOR SHALL COORDINATE ALL LOW VOLTAGE EQUIPMENT AND CONTROLS WITH OWNER.

LIGHTING SCHEDULE								
SYMBOL	MARK	DESCRIPTION	SYMBOL	MARK	DESCRIPTION	SYMBOL	MARK	DESCRIPTION
[Symbol]	A1, A4, A3	2' x 4', INTERIOR CEILING GRID LAY-IN, LED LAMPED, DIRECT - INDIRECT WITH CURVED DIFFUSER.	[Symbol]	F	4" DIAM., CEILING RECESSED, LED LAMPED INTERIOR DOWNLIGHT W/ WALL-MOUNT REFLECTOR / LENS.	[Symbol]	R	CEILING RECESSED HVAC RETURN AIR DIFFUSER
[Symbol]	A2, A3	2' x 2', INTERIOR CEILING GRID LAY-IN, LED LAMPED, DIRECT - INDIRECT WITH CURVED DIFFUSER.	[Symbol]	G	18" WIDE DIAM., EXTERIOR WALL-MOUNT, LED LAMPED, DOWN LIGHT SCOFF.	[Symbol]	S	CEILING RECESSED HVAC SUPPLY AIR DIFFUSER
[Symbol]	B	10" x 4", INTERIOR CEILING SURFACE-MOUNT, LED LAMPED, LINEAR WITH CURVED PRISMATIC DIFFUSER.	[Symbol]	H	7 1/2" WIDE, EXTERIOR WALL-MOUNT, LED LAMPED, DOWN LIGHT SCOFF.	[Symbol]	W/S	WALL MOUNT FIRE-ALARM SYSTEM HORN-STROBE DEVICE
[Symbol]	C1, C2	4" DIAM., CEILING RECESSED, LED LAMPED INTERIOR DOWNLIGHT.	[Symbol]	J	15" DIAM., INTERIOR CEILING SURFACE MOUNT, LED LAMPED, UTILITY WITH OPAQUE DIFFUSER IN WHITE.	[Symbol]	X	CEILING MOUNT EDGE LIT LED EXIT SIGN W/ RED LETTERS
[Symbol]	D	6" DIAM. EXTERIOR CEILING RECESSED, LED LAMPED, RECESSED DOWNLIGHT.	[Symbol]	EF	INTERIOR CEILING RECESSED EXHAUST FAN	[Symbol]		2'x2' ACOUSTICAL CEILING SYSTEM (SEE CEILING FINISHES LEGEND "C-1")
[Symbol]	EM	DUAL HEAD, EXTERIOR WALL SURFACE-MOUNT, LED LAMPED, EMERGENCY LIGHT WITH BATTERY BACK-UP.	[Symbol]	L	2" DIAM., CEILING RECESSED, LED LAMPED INTERIOR MIN-DOWNLIGHT	[Symbol]		2'x4' ACOUSTICAL CEILING SYSTEM (SEE CEILING FINISHES LEGEND "C-2")