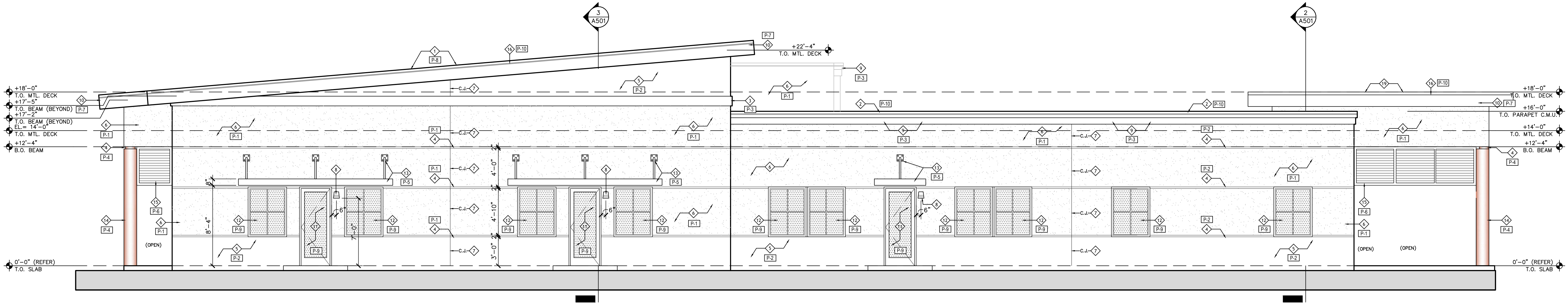


1 EAST ELEVATION
A401

SCALE: 3/16" = 1'-0"



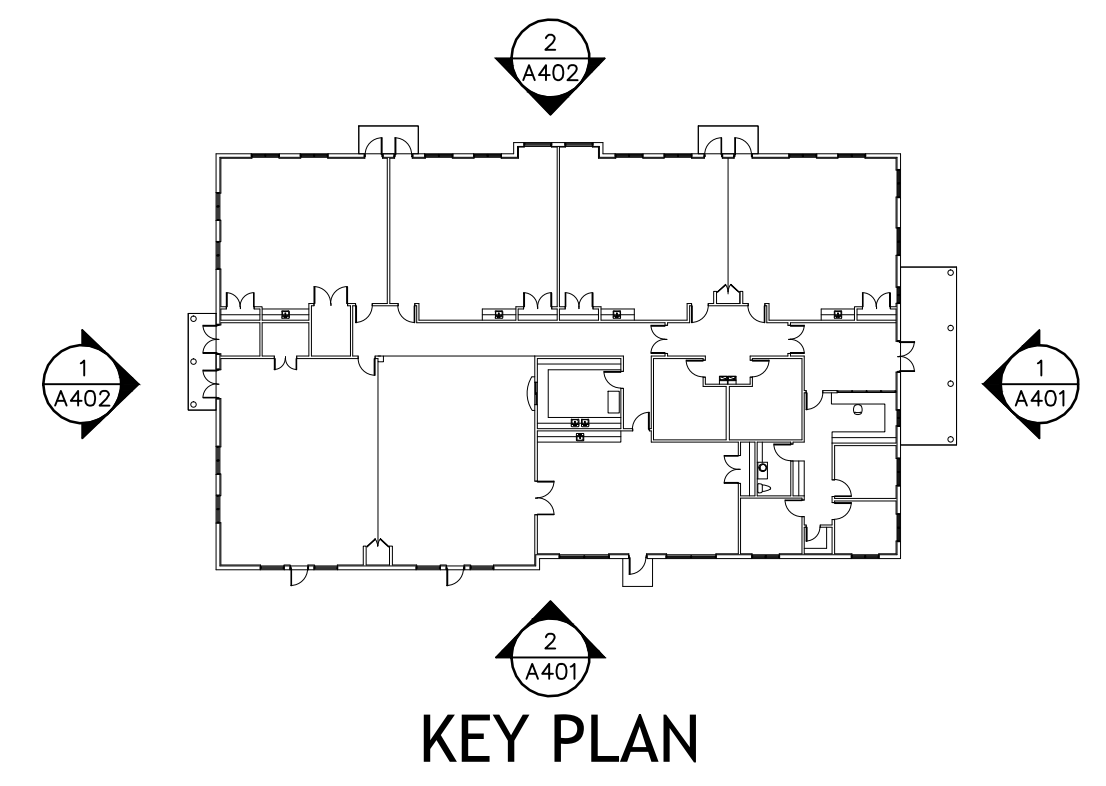
2 SOUTH ELEVATION
A401

SCALE: 3/16" = 1'-0"

COLOR LEGEND			
TAG	MATERIAL	COLOR	BRAND AND NUMBER
P-1	LT. TEXTURED STUCCO	HAWTHORNE YELLOW	BENJAMIN MOORE # HC-4
P-2	SMOOTH STUCCO	VANILLA CREAM	BENJAMIN MOORE # 2154.70
P-3	SMOOTH STUCCO BAND	VANILLA CREAM	BENJAMIN MOORE # 2154.70
P-4	ALUMINUM CLAD COLUMN	NAVAJO RED	BENJAMIN MOORE # 2171.10
P-5	ALUMINUM CANOPY AND SUPPORTS	WHITE WSP	BENJAMIN MOORE # OC-54
P-6	ALUMINUM LOUVERS	-	GREY MILL FINISH
P-7	ALUMINUM FASCIA	WHITE WSP	BENJAMIN MOORE # OC-54
P-8	STANDING SEAM ROOF	KYNAR 500 "PARCHMENT"	BERRIDGE OR EQUAL
P-8	WALKWAY ROOF SYSTEM AND COLUMNS	KYNAR 500 "PARCHMENT"	BERRIDGE OR EQUAL
P-9	ALUMINUM DOORS & WINDOWS	-	GREY MILL FINISH
P-10	ALUMINUM CAP FLASHING OR DRIP EDGE	WHITE WSP	BENJAMIN MOORE # OC-54

NOTE: 1. IMPACT RESISTANT GLAZING TO BE LT. GRAY TINTED
2. WINDOW FRAME COLOR TO BE GREY MILL FINISH
3. DOORS AND DOOR FRAME COLOR TO BE GRAY MILL FINISH

ELEVATION LEGEND	
1	STANDING SEAM METAL ROOF ATTACHED OVER MEMBRANE TO SUBSTRATE ATTACHED TO DECK, TYP.
2	ALUMINUM PARAPET CAP FLASHING SYST. W/ SHOP POWDER COAT PAINT FINISH, TYP.
3	12" H. X 1 1/2" RAISED E.I.F.S. BAND W/ SMOOTH STUCCO & PAINT FINISH, TYP.
4	2" HIGH P.V.C. REGLETS W/ PAINT FINISH, ALIGN W/ WINDOW & DOOR FRAMES, TYP.
5	SMOOTH / SAND TEXTURED STUCCO FINISH W/ PAINT FINISH, TYP.
6	MEDIUM / KNOCK-DOWN TEXTURED STUCCO FINISH W/ PAINT FINISH, TYP.
7	VERTICAL 1/2" W. P.V.C. W-TYPE VINYL STUCCO STOP CONTROL JOINTS, TYP.
8	WALL MOUNT LED LAMPED LIGHT FIXTURE, TYP.
9	STEPPED DOUBLE 8" H. X 2' & 4' RAISED E.I.F.S. CAP BAND W/ SMOOTH STUCCO & PAINT FINISH, TYP.
10	ALUMINUM CLAD DOUBLE 3/4" THK. PLYWOOD FASCIA W/ SHOP POWDER COAT PAINT FINISH, TYP.
11	IMPACT RESISTANT ALUMINUM FRAMED STOREFRONT DOORS W/ ALUM. MILL FIN. & LIGHT GRAY TINTED LAMINATED GLASS, TYP.
12	IMPACT RESISTANT ALUMINUM FRAMED STOREFRONT WINDOWS W/ ALUM. MILL FIN. & LIGHT GRAY TINTED LAMINATED GLASS & MUNTINS AS SHOWN, TYP.
13	ALUMINUM CANOPY W/ WALL-MOUNT SUPPORT BRACKETS & SHOP POWDER COAT WHITE PAINT FINISH, TYP.
14	ALUM. CLAD COLUMN COVER W/ SHOP POWDER COAT PAINT FIN. ATT. TO GALV. STL. FRAMING ATT. TO STRUCTURAL STL. COLUMN, TYP.
15	DECORATIVE METAL LOUVERED SUN-SCREEN PANEL ATTACHED VERTICALLY TO STRUCTURE W/ SHOP POWDER COAT PAINT FINISH, TYP.
16	4" H. ALUM. DRIP EDGE W/ SHOP POWDER COAT PAINT FIN. AS PART OF ROOF SYSTEM, TYP.
17	PRE-FAB. METAL CANOPY SYST. AT WALKWAYS ADJACENT TO BUILDING W/ SHOP POWDER COAT PAINT FIN., TYP.
18	INSULATED HOLLOW METAL DOOR & FRAME. SHOP PRIMED & FIELD PAINTED TO MATCH WALL COLOR AS NOTED, TYP.
19	3-PLY MODIFIED BITUMINOUS ROOF SYSTEM ATTACHED TO DECK THROUGH INSULATION, TYP.



KEY PLAN

REVISIONS	BY

Slattery & Associates
ARCHITECTS PLANNERS
 2060 NW BOCA RATON BLVD.
 SUITE 2
 BOCA RATON, FL 33431
 TEL: 561-392-3848
 FAX: 561-392-5402
 WWW.SLATTERYARCHITECTS.COM

ACTIVITY CENTER FOR FLORENCE FULLER CHILD DEVELOPMENT CENTERS WEST CAMPUS
 S.W. 185TH STREET
 BOCA RATON, PALM BEACH COUNTY, FLORIDA

BIDDING NOT FOR CONSTRUCTION
 SEAL DATE: X-X-X
 SLATTERY & ASSOCIATES
 FLORIDA REGISTRATION # AA0003381

A401

DRAWN	CR, DR, AB
CHECKED	KB
DATE	10-21-16
SCALE	AS NOTED
JOB NO.	2011-64
SHEET	

BUILDING ELEVATIONS

PHASE: C.D. SET 10-21-16