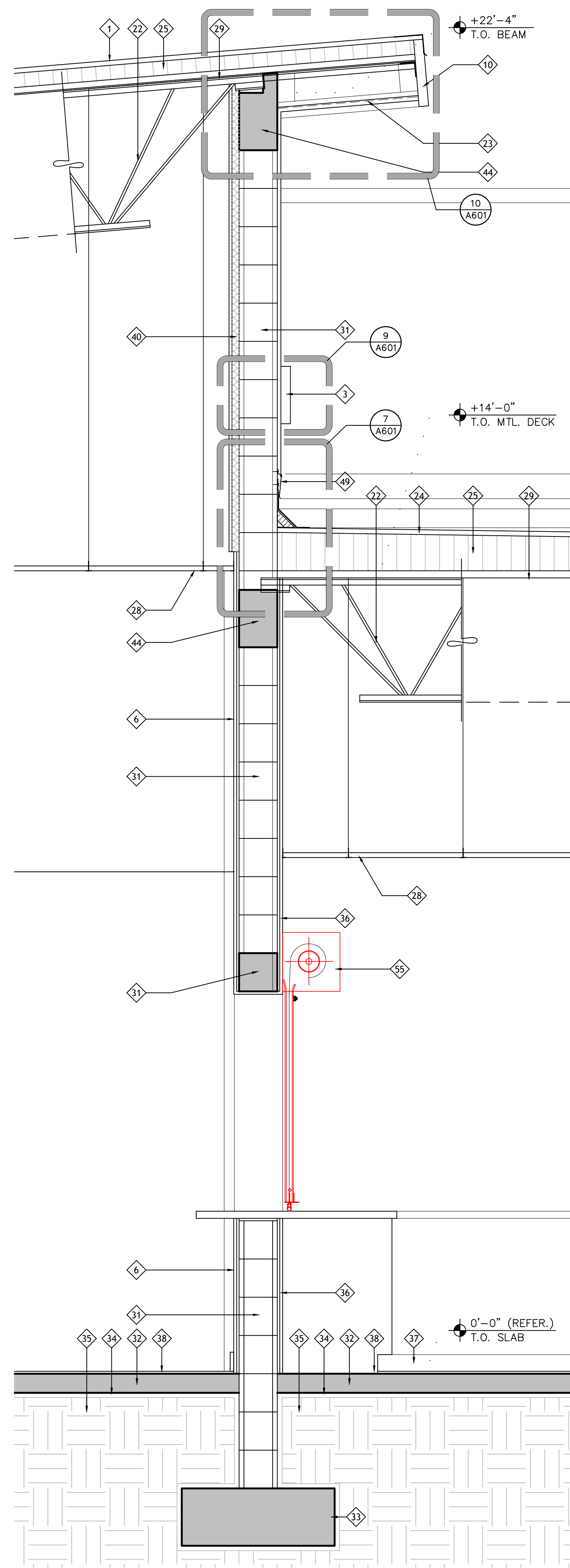
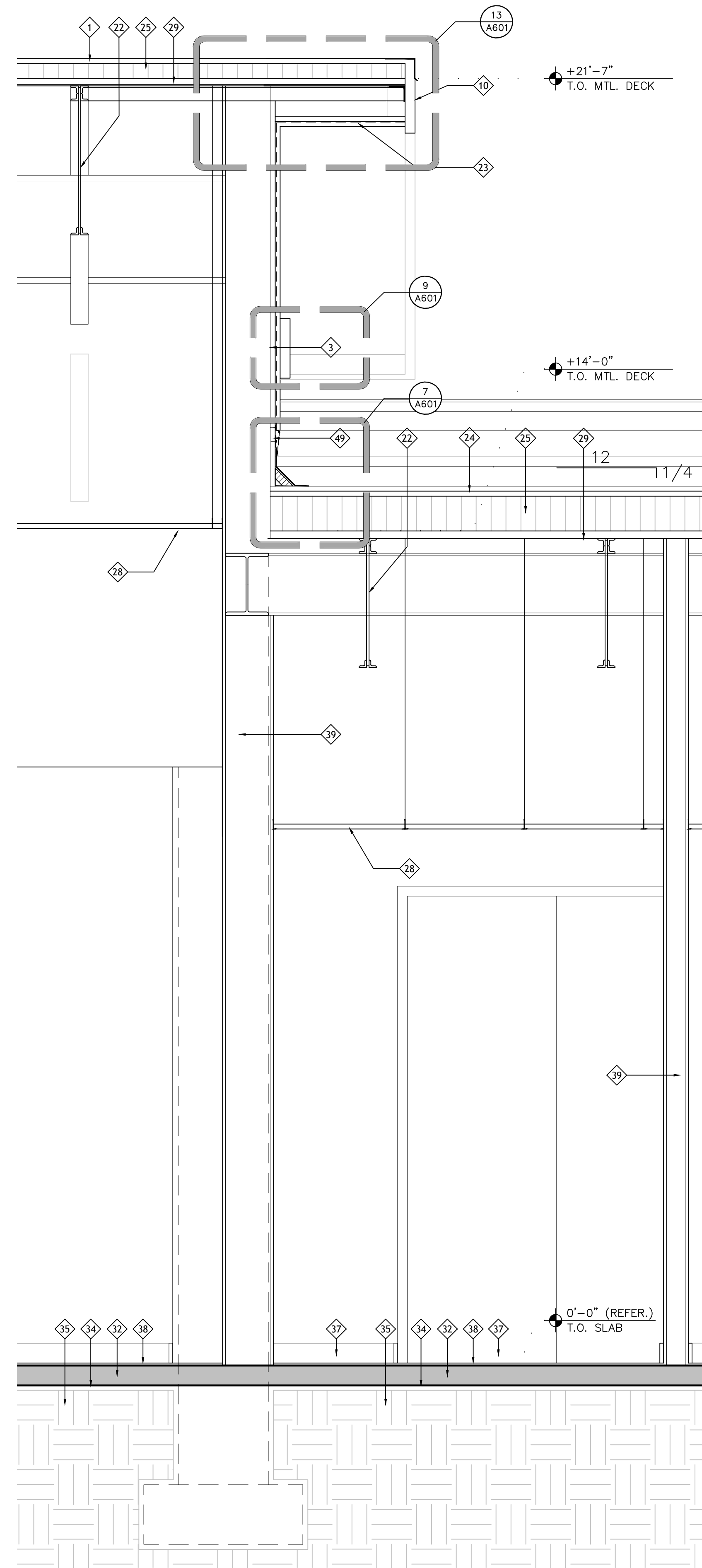


1 WALL SECTION
A553 SCALE: 3/4" = 1'-0"



2 WALL SECTION
A553 SCALE: 3/4" = 1'-0"



3 WALL SECTION
A553 SCALE: 3/4" = 1'-0"

- SECTION LEGEND**
- 1 ALUM. STANDING-SEAM ROOF ATTACHED OVER MEMBRANE TO PLYWD. SUBSTRATE & DECK PER N.O.A. & MFR. INSTRUCTIONS, TYP.
 - 2 ALUMINUM PARAPET CAP FLASHING SYST. W/ SHOP POWDER COAT PAINT FINISH OF COLOR SELECTED BY ARCHITECT, TYP.
 - 3 12" H. X 2" RAISED E.I.F.S. BAND W/ SMOOTH PAINTED STUCCO FINISH, TYP.
 - 4 2" HIGH P.V.C. REGLET ATT. TO STRUCTURE W/ PAINT FINISH, TYP.
 - 5 SMOOTH (LIGHT SAND) TEXTURED STUCCO W/ PAINT FINISH, TYP.
 - 6 MEDIUM (KNOCKDOWN) TEXTURED STUCCO W/ PAINT FINISH, TYP.
 - 7 VERTICAL & HORIZONTAL STUCCO SYST. CONTROL JOINTS, TYP.
 - 8 6" H. X 1" RAISED E.I.F.S. BAND W/ SMOOTH STUCCO & VERTICAL JOINTS WHERE SHOWN W/ PAINT FINISH, TYP.
 - 9 DBL. 6" H. X 2" & 4" RAISED E.I.F.S. CAP BAND FOR W/ PAINT FINISH, TYP.
 - 10 ALUM. CLAD DBL. 3/4" PLYWD. FASCIA W/ SHOP POWDER COAT PAINT FIN. ATTACHED TO TRUSS SYST. HEEL CHANNEL CONT. TYP.
 - 11 IMPACT RESISTANT ALUMINUM FRAMED STOREFRONT WINDOWS W/ LIGHT GRAY TINTED LAMINATED GLASS & MUNTINS AS SHOWN, TYP.
 - 12 IMPACT RESISTANT ALUMINUM FRAMED STOREFRONT DOORS W/ LIGHT GRAY TINTED LAMINATED GLASS, TYP.
 - 13 ALUM. EYEBROW CANOPY W/ DIAGONAL SUSPENSION STRUTS ATT. TO STRUCTURE AS DESIGNED BY SPECIALTY ENGINEER & W/ SHOP POWDER-COAT PAINT FINISH, TYP.
 - 14 DECORATIVE METAL BRACKET ATT. TO STRUCTURE W/ SHOP POWDER COAT PAINT FINISH, TYP.
 - 15 DECORATIVE METAL LOUVERED PANEL ATT. TO STRUCTURE W/ SHOP POWDER COAT PAINT FINISH, TYP.
 - 16 LIGHT FIXTURE, TYP. (SEE A351 & 'E' DWGS.)
 - 17 METAL CANOPY SYST. @ WALKWAYS ADJACENT TO BLDG. W/ SHOP POWDER COAT PAINT FIN. AS DESIGNED BY SPECIALTY ENGINEER, TYP.
 - 18 ICYNENE SPRAY FOAM INSULATION, TYP.
 - 19 METAL ROOF TRUSS SYST. DESIGNED BY SPECIALTY ENGINEER, TYP. (SEE 'S' DWGS.)
 - 20 EXTERIOR GALV. METAL STUD FRAME WALL ATT. TO STRUCTURE, TYP. (SEE 'S' DWGS.)
 - 21 STEEL BEAM ATT. TO STRUCTURE, TYP. (SEE 'S' DWGS.)
 - 22 STEEL JOIST ATT. TO STRUCTURE, TYP. (SEE 'S' DWGS.)
 - 23 3/4" SMOOTH STUCCO SOFFIT OVER GALV. METAL HIGH RIB LATH ATTACHED TO FURRING CHANNELS & TRUSSES, TYP. (SEE 'S' DWGS.)
 - 24 3 PLY MODIFIED BITUMINOUS ROOF SYST. ON TAPERED RIGID INSULATION OVER STRUCTURAL METAL DECK PER N.O.A. & MFR'S INSTRUCTIONS, TYP.
 - 25 RIGID INSULATION MECHANICALLY ATT. TO STRUCTURAL ROOF DECK PER ROOF SYST. N.O.A. & MFR'S. PUBLISHED INSTRUCTIONS, TYP.
 - 26 ROOF DRAIN ATT. TO STRUCTURE & FLASHED IN PER ROOF SYST. N.O.A. & MFR'S. PUBLISHED INSTRUCTIONS, TYP. (SEE 'P' DWGS.)
 - 27 5/8" GYPSUM BOARD, PREPD. & PAINTED ATT. TO LT. GAUGE GALV. METAL STUD FRAMING PER SYST. MFR'S. PUBLISHED INSTRUCTIONS, TYP. (SEE WALL TYPES)
 - 28 ACOUSTICAL TILE & SUSPENDED METAL GRID SYST. PER MFR'S PUBLISHED INSTRUCTIONS, TYP.
 - 29 1/2" D. GALV. MTL. CORRUGATED STRUCTURAL ROOF DECK WELD ATT. TO STRUCTURE, TYP. (SEE 'S' DWGS.)
 - 30 CONC. BEAM W/ STL. REINFORCING, TYP. (SEE 'S' DWGS.)
 - 31 C.M.U. WALL W/ STEEL & CONC. REINFORCING, TYP. (SEE 'S' DWGS.)
 - 32 4" THK. MIN. CONC. SLAB ON GRADE, TYP. (SEE 'S' DWGS.)
 - 33 CONC. FOOTING W/ STL. REINFORCING, TYP. (SEE 'S' DWGS.)
 - 34 10 MIL MIN. VAPOR BARRIER, TYP.
 - 35 CLEAN WELL COMPACTED TERMITES TREATED SOIL, TYP. (PROVIDE DENSITY TEST REPORTS AS REQ'D.)
 - 36 1/2" GYP BOARD PREPD. & PAINTED ATTACHED TO GALV. MTL. Z-FURRING ATT. TO C.M.U. W/ FOIL-FACED THERMAL BOARD INSULATION BTWN, TYP.
 - 37 WALL BASE, TYP. (SEE 'D' DWGS.)
 - 38 FLOOR FINISH PER MFR'S. PUBLISHED INSTRUCTIONS, TYP. (SEE 'D' DWGS.)
 - 39 1/2" G.W.B. ON GALV. MTL. STUD FRAME-DOWN CEILING OR SOFFIT PER SYST. MFR'S. PUBLISHED INSTRUCTIONS, TYP.
 - 40 FOIL-FACED FIBERGLASS THERMAL BATT INSULATION, TYP.
 - 41 MINERAL FIBER SOUND BATT INSULATION W/ STL. CAVITIES, TYP. (SEE WALL TYPES FOR SPECIFIC LOCATIONS)
 - 42 2" CONTINUOUS P.V.C. SCREEN VENT ATT. TO SOFFIT LATH & FURRING PER MFR. INSTRUCTIONS, TYP.
 - 43 PRE-CAST OR Poured CONC. LINTEL, TYP. (SEE 'S' DWGS.)
 - 44 Poured CONC. BOND OR TIE-BEAM W/ STL. REINFORCING, TYP. (SEE 'S' DWGS.)
 - 45 3/4" THK. STUCCO OVER GALV. MTL. LATH W/ BITUMINOUS FELT PAPER BACKING ATT. TO PLYWD. SHEATHING ATT. TO FRAMING, TYP. (SEE 'S' DWGS.)
 - 46 ALUM. CLAD COLUMN COVER W/ SHOP POWDER-COAT PAINT FIN. ATT. TO GALV. STL. FRAMING ATT. TO STRUCTURAL STL. COLUMN, TYP.
 - 47 Poured CONC. ENTRY SLAB OR STOOP W/ W/ F. REINFORCING PITCHED SLIGHTLY TO DRAIN AWAY, TYP. (SEE 'S' DWGS.)
 - 48 MTL. THRESHOLD W/ 3/4" MAX. RISE & A.D.A. COMPLIANT PITCH, TYP.
 - 49 ROOFING TERMINATION MTL. FLASHING AND COUNTER FLASHING W/ STUCCO STOP PER ROOF SYST. MFR'S PUBLISHED INSTRUCTIONS, TYP.
 - 50 P.T. WOOD BLOCKING ATT. TO FRAMING, TYP.
 - 51 INTERIOR DOOR & FRAME, TYP. (SEE SCHEDULE.)
 - 52 INTERIOR PLYWD. CASEWORK ATT. TO STRUCTURE, TYP. (PROVIDE COMPLETE MFR. SHOP DWGS. W/ FINISH & HARDWARE SELECTIONS FOR OWNER & ARCHITECT PRE-APPROVAL.)
 - 53 4" H. ALUM. DRIP-EDGE FLASHING W/ SHOP POWDER-COAT PAINT FIN. ATT. & FLASHED PER ROOF SYST. N.O.A. & MFR'S. PUBLISHED INSTRUCTIONS, TYP.
 - 54 GALV. MTL. STUD FRAME-DOWN FOR EXTERIOR SOFFIT OR CEILING ATT. TO STRUCTURE, TYP. (SEE 'S' DWGS.)
 - 55 4' X 3'-10" METAL ROLL UP DOOR.

REVISIONS	BY

Slattery & Associates
ARCHITECTS
PLANNERS

2060 NW BOCA RATON BLVD.
SUITE 2
BOCA RATON, FL 33431
TEL: 561-392-3848
FAX: 561-392-5402
WWW.SLATTERYARCHITECTS.COM

ACTIVITY CENTER
FOR
FLORENCE FULLER CHILD DEVELOPMENT CENTERS
WEST CAMPUS
S.W. 185TH STREET
BOCA RATON, PALM BEACH COUNTY, FLORIDA

BIDDING
NOT FOR
CONSTRUCTION

SEAL DATE: X-X-X
SLATTERY & ASSOCIATES
FLORIDA REGISTRATION # AA0003381

DRAWN	CR, DR, AB
CHECKED	KB
DATE	10-21-16
SCALE	AS NOTED
JOB NO.	2011-64
SHEET	

A553

WALL SECTIONS

PHASE: C.D. SET 10-21-16