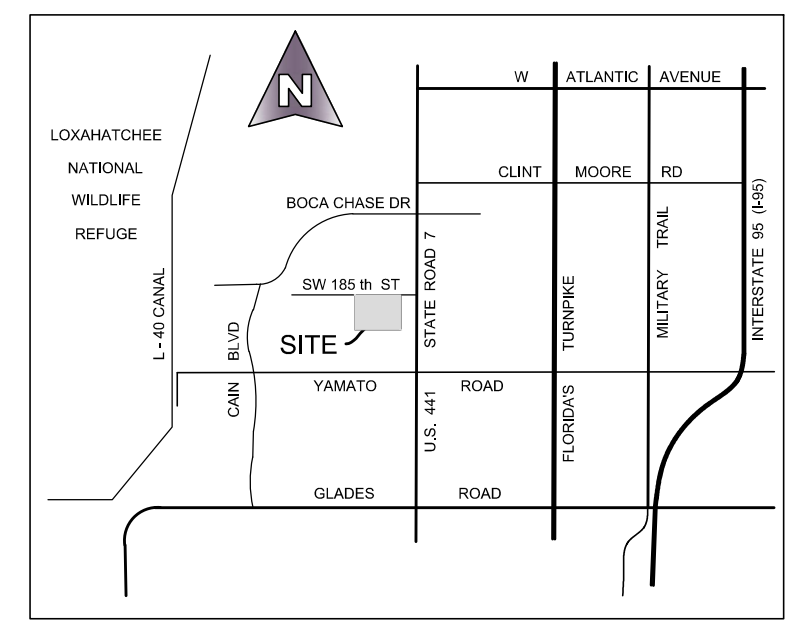
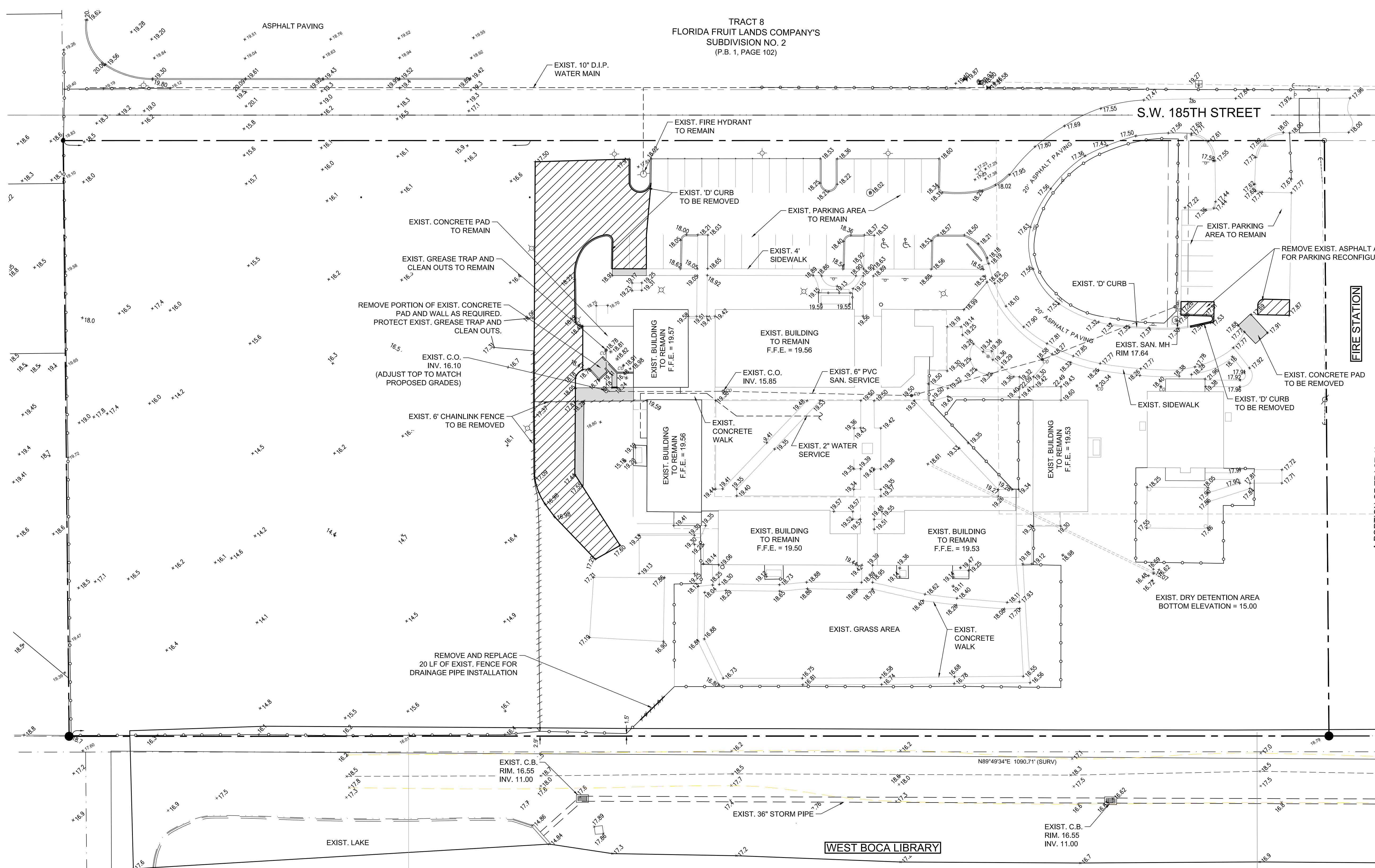


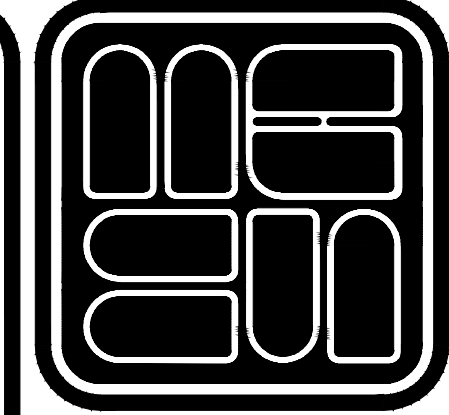
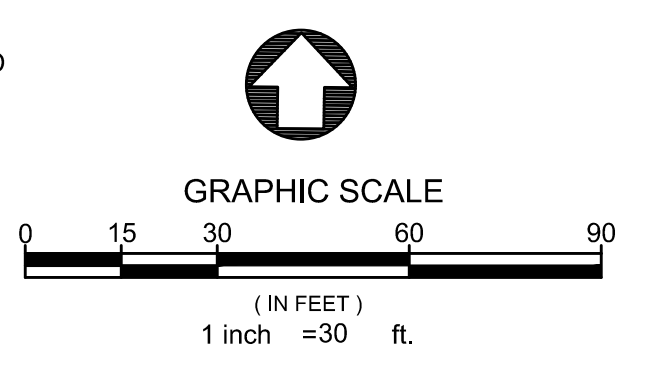
Date/Time : Thu, 10 Nov 2016 - 1:51pm

PathName : P:\1544\CIVIL\CAD\1544 DEV.dwg

TRACT 8  
FLORIDA FRUIT LANDS COMPANY'S  
SUBDIVISION NO. 2  
(P.B. 1, PAGE 102)



SEC 1, TWP 47, RNG 41E  
**LOCATION MAP**  
N.T.S.



**MICHAEL B. SCHORAH & ASSOCIATES, INC.**  
ENGINEERS • SURVEYORS • DEVELOPMENT CONSULTANTS  
TEL (661) 969-0080  
FAX (661) 642-9726  
www.schorah.com  
EB# 2438  
1850 FOREST HILL BLVD., SUITE 206  
WEST PALM BEACH, FLORIDA 33406

REVISIONS

NO.	DESCRIPTION

DRAWN/CHECKED:	RAB / JIV
PROJECT:	FORGE VALLE LOT 2 & 3 FLORIDA LICENSE # 77099 FOR MICHAEL B. SCHORAH AND ASSOCIATES, INC.
SCALE:	1" = 30'
DATE:	AUGUST 2016

PROJECT:	FLORENCE FULLER CHILD DEVELOPMENT CENTER
DESCRIPTION:	DEMOLITION PLAN

JOB NO.	1544
SHEET NO.	4
OF 14	

**LEGEND**  
[Hatched Box] EXIST. ASPHALT TO BE REMOVED  
[Solid Grey Box] EXIST. CONCRETE SIDEWALK / PAD TO BE REMOVED