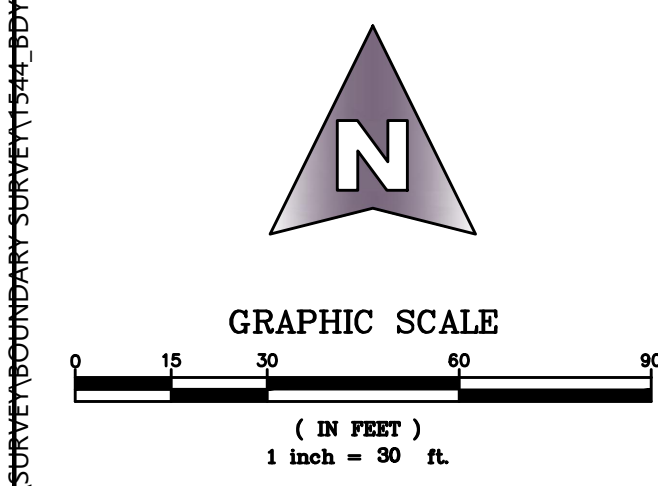
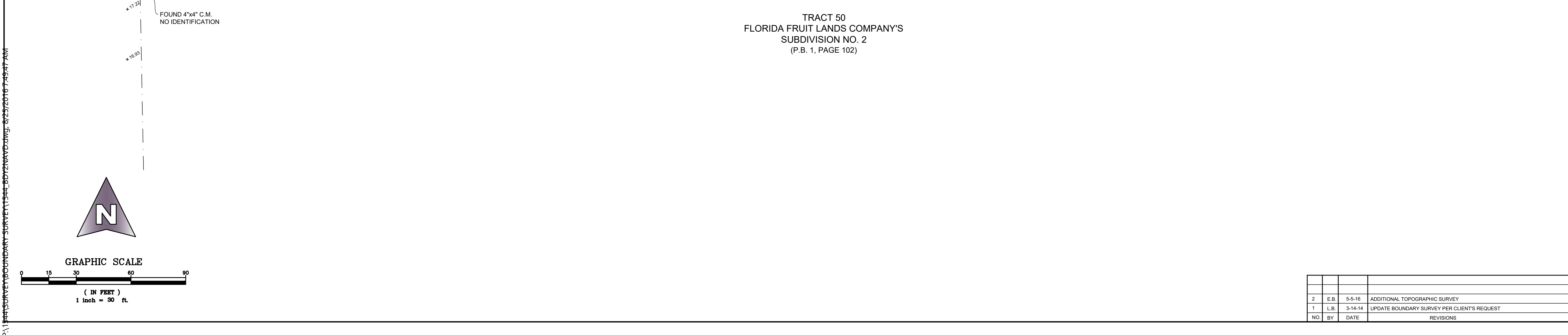
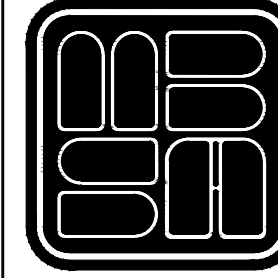


**LEGEND**

- P.O.C. = POINT OF COMMENCEMENT
- P.O.B. = POINT OF BEGINNING
- C.M. = CONCRETE MONUMENT
- R/W = RIGHT-OF-WAY
- P.B. = PLAT BOOK
- O.R.B. = OFFICIAL RECORD BOOK
- PG(S) = PAGE(S)
- P.B.C.R. = PALM BEACH COUNTY RECORDS
- R = RADIUS
- A = CURVE CENTRAL ANGLE
- L = ARC LENGTH
- P = PLAT
- D = DESCRIPTION
- C = CALCULATED
- M = MEASURED
- C.&M. = CALCULATED AND MEASURED
- P.&M. = PLAT AND MEASURED
- EL = ELEVATION
- TRANS = TRANSFORMER
- LP = LIGHT POLE
- FH = FIRE HYDRANT
- W.M. = WATER METER
- C.B. = CATCH BASIN
- S.M.H. = STORM MANHOLE
- F.P.R.L. = FLORIDA POWER AND LIGHT COMPANY
- L.B. = LANDSCAPE BUFFER
- L.A.E. = LIMITED ACCESS EASEMENT
- U.E. = UTILITY EASEMENT
- M.T.E. = MASS TRANSIT EASEMENT
- BOL = BOLLARD
- CONC. = CONCRETE
- CATV = CABLE TELEVISION SERVICE
- HH = HANDHOLE
- A/C = AIR CONDITIONER
- CLF = CHAIN LINK FENCE
- S.C.O. = SANITARY CLEANOUT
- FDC = FIRE DEPARTMENT CONNECTION
- C&G = CURB AND GUTTER
- € = CENTERLINE
- CO = CLEANOUT
- ⊕ = SANITARY SEWER MANHOLE
- ⊙ = STORM MANHOLE
- CTV = CABLE RISER
- = FOUND 4"x4" C.M. AS SHOWN
- = FOUND 12" I.R. & C. STAMPED "LB # 7733"
- = SET 12" I.R. & C. STAMPED "MBSA LB 2438"
- ⊙ = SOUTHERN BELL MANHOLE
- ⊕ = CATCH BASIN
- ⊕ = FIRE HYDRANT
- ⊕ = GATE VALVE
- ⊕ = GUY ANCHOR
- ⊕ = WOOD POWER POLE
- ⊕ = CONCRETE POWER POLE
- ⊕ = LIGHT POLE
- ⊕ = WATER METER
- = BARB WIRE FENCE
- = GUARD RAIL
- = OVERHEAD POWER LINE
- = CHAIN LINK FENCE
- = HANDICAP
- = ATT RISER
- = SIGN AS SHOWN
- = EXISTING ELEVATIONS (NAVD 88)





**MICHAEL B. SCHORAH & ASSOCIATES, INC.**  
 1850 Forest Hill Boulevard, Suite 206  
 West Palm Beach, Florida 33406  
 Phone (561) 968-0080 Fax. (561) 642-9726

FIELD P.D./J.N.	FIELD BOOK	SCALE	SHEET NO. <b>2</b>
CHECKED J.T.G.	PAGE	1" = 30'	
DRAWN L.C.B.	CADD FILE	DATE	
	1544_FLORENCE F	JULY, 2012	OF 3

**ALTA SURVEY**

OF  
**FLORENCE FULLER CHILD DEVELOPMENT CENTER**

LB # 2438  
FILE NO. 1544

P:\1\SURVEY\BOUNDARY SURVEY\13511351\_BDY21\DRAWING-325272167-749547.dwg