

EST. 1988
RICK GONZALEZ, AIA
 PRESIDENT, AR-0014172
 300 CLEMATIS STREET
 WEST PALM BEACH
 FLORIDA 33401
 PH: (561) - 659 - 2383
 FAX: (561) - 659 - 5446
 www.regarchitects.com
 CORPORATION NUMBER
 AA-000247

VILLAGE COMMONS

SUITE 002B

WEST PALM BEACH, FL 33409

REVISIONS	NO.

REG No. 16445
 © 2016

ELECTRICAL RISER & PANEL SCHEDULE

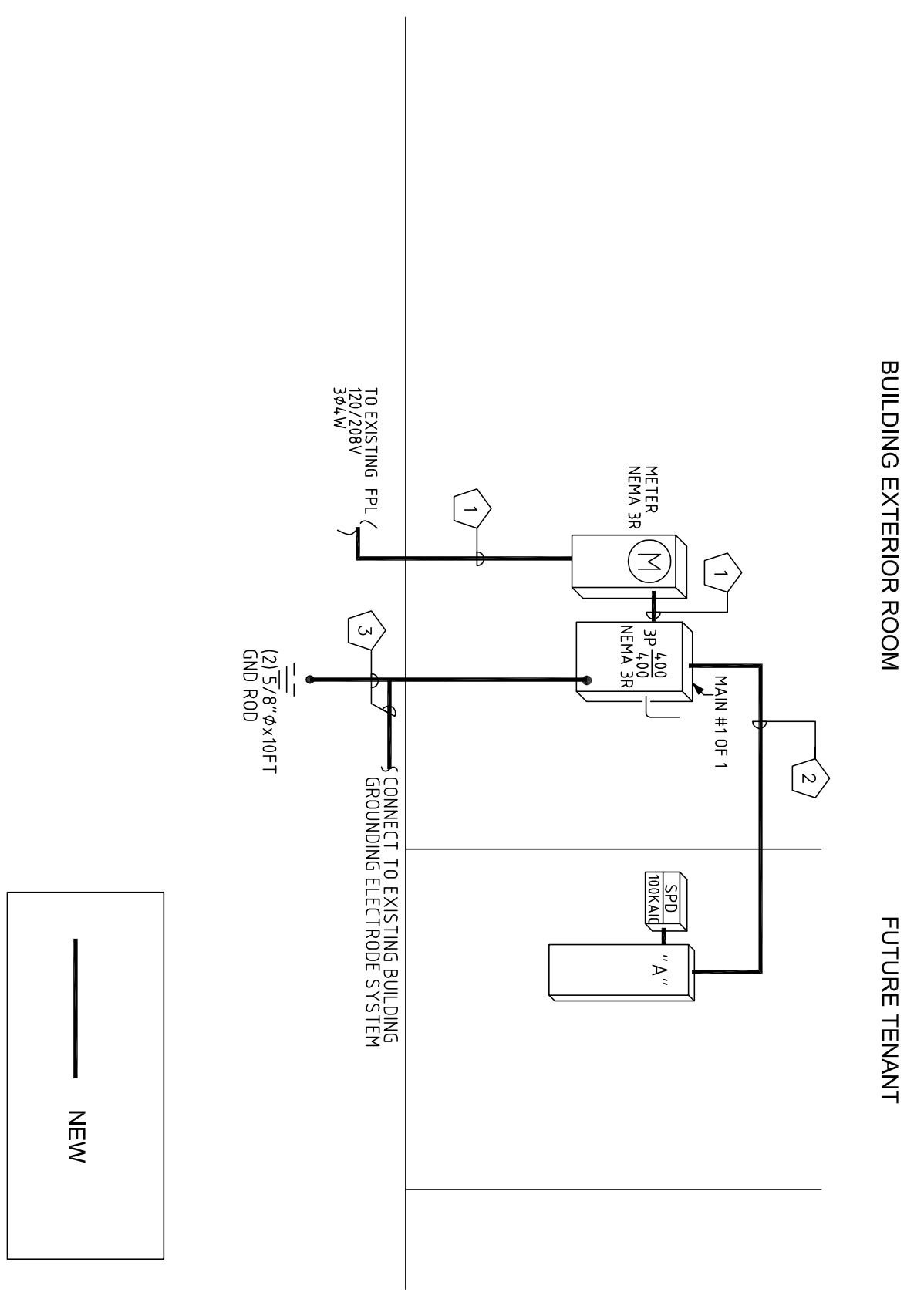
E3.1

BUS/LOAD	TYPE	NO.		WIRE		LOAD	BUS		WIRE		LOAD	BUS/LOAD	
		A	B	COND	SIZE		A	B	COND	SIZE		A	B
A	0.6	12	12	1/2"	#12	20	1	2	20	-	-	12	-
B	12	SPARE	-	-	-	20	5	6	20	-	-	12	-
C	12	SPARE	-	-	-	20	7	8	20	-	-	12	-
A	12	SPARE	-	-	-	20	11	10	20	-	-	12	-
B	12	SPARE	-	-	-	20	13	14	20	-	-	12	-
C	12	SPARE	-	-	-	20	15	16	20	-	-	12	-
A	-	SPARE	-	-	-	20	19	18	20	-	-	-	-
B	-	SPARE	-	-	-	20	21	20	20	-	-	-	-
C	-	SPARE	-	-	-	20	23	24	20	-	-	-	-
A	-	SPARE	-	-	-	20	25	26	20	-	-	-	-
B	-	SPARE	-	-	-	20	27	28	20	-	-	-	-
C	-	SPARE	-	-	-	20	29	30	20	-	-	-	-
A	-	SPARE	-	-	-	20	31	32	20	-	-	-	-
B	-	SPARE	-	-	-	20	33	34	20	-	-	-	-
C	-	SPARE	-	-	-	20	35	36	20	-	-	-	-
A	-	SPARE	-	-	-	20	37	38	20	-	-	-	-
B	-	SPARE	-	-	-	20	39	40	20	-	-	-	-
C	-	SPARE	-	-	-	20	41	42	20	-	-	-	-

KVA OA 4.2 KVA OB 4.8 KVA OC 4.8
 KVA DA 35.8 KVA DB 43.0 KVA DC 43.0

RISING & FALLING
 MANUFACTURER ELECTRICAL CONTRACTOR SHALL PROVIDE AN ACCURATE PER FIELD CONDITIONS, TYPICAL PANEL SCHEDULE UPON COMPLETION OF THE PROJECT.
 PER MANUFACTURER RECOMMENDATIONS

PANEL RATING: 480 AMPERS
 MIN. ALC: 22000
 MOUNT SURFACE



RISER NO. 1 ELECTRICAL RISER DIAGRAM NOT TO SCALE

EXISTING FEEDER SIZE KEY NOTES

- 2 SETS OF #8X0 THIN CU IN 2-1/2" CONDUIT (MAX DISTANCE - 56 FEET WITH VD LESS THAN 2%)
- 2 SETS OF #8X0 & #6 GND THIN CU IN 2-1/2" CONDUIT
- #10/0 CU GND

A/C Calculation for wire length
 Load 300 Amperes
 Load Circuit: 3-Ph, 4-W, Wye
 Power Factor: 0.95
 Conductor: Copper
 Conductors per Phase: 2
 Voltage Drop: 2%
 Conductor Gauge: 3/0
 Results: Cable Length: 156.65 Feet
 Source: EPR Electrical Design's Software
 Software Version: 8.7 (Build 2017). Based on the 2011 NEC
 Copyright © 2008-2007 C-E Electronic Publishing, Inc. All Rights Reserved.

PRIOR TO SUBMITTING THE BID, THE CONTRACTOR SHALL FIELD VERIFY ALL EXISTING CONDITIONS AND INFORMATION FROM THE ARCHITECT AND THE ENGINEER OF ANY DISCREPANCY BETWEEN THESE DOCUMENTS AND THE EXISTING CONDITIONS AND SHALL INCLUDE IN THE BID TO CORRECT THE SAME AS DIRECTED. THE ENGINEER AND THE ARCHITECT ARE NOT RESPONSIBLE FOR ANY ADDITIONAL COSTS RESULTING FROM DISCREPANCIES. NO CHANGES SHALL BE MADE TO THESE PLANS WITHOUT PRIOR APPROVAL FROM THE ENGINEER OF RECORD. ALL CHANGES SHALL BE SUBMITTED FOR REVIEW PRIOR TO INSTALLATION. NOT FOR BID UNTIL PERMIT HAS BEEN ISSUED.

300 LOCK ROAD, SUITE #202
 WEST PALM BEACH, FL 33412
 TEL: (561) 591-9292 FAX: (561) 591-9898
 CERTIFICATE OF AUTHORIZATION NO. 281107
 DONALD H. ALBERT, P.E., E.C.
 DONALD H. ALBERT, JR., P.E. LICENSE #610551
 DESIGNED BY: -SK-
 P/N 16445

REG CONSULTING

CHECK SET 10/19/16