

REVISIONS	BY

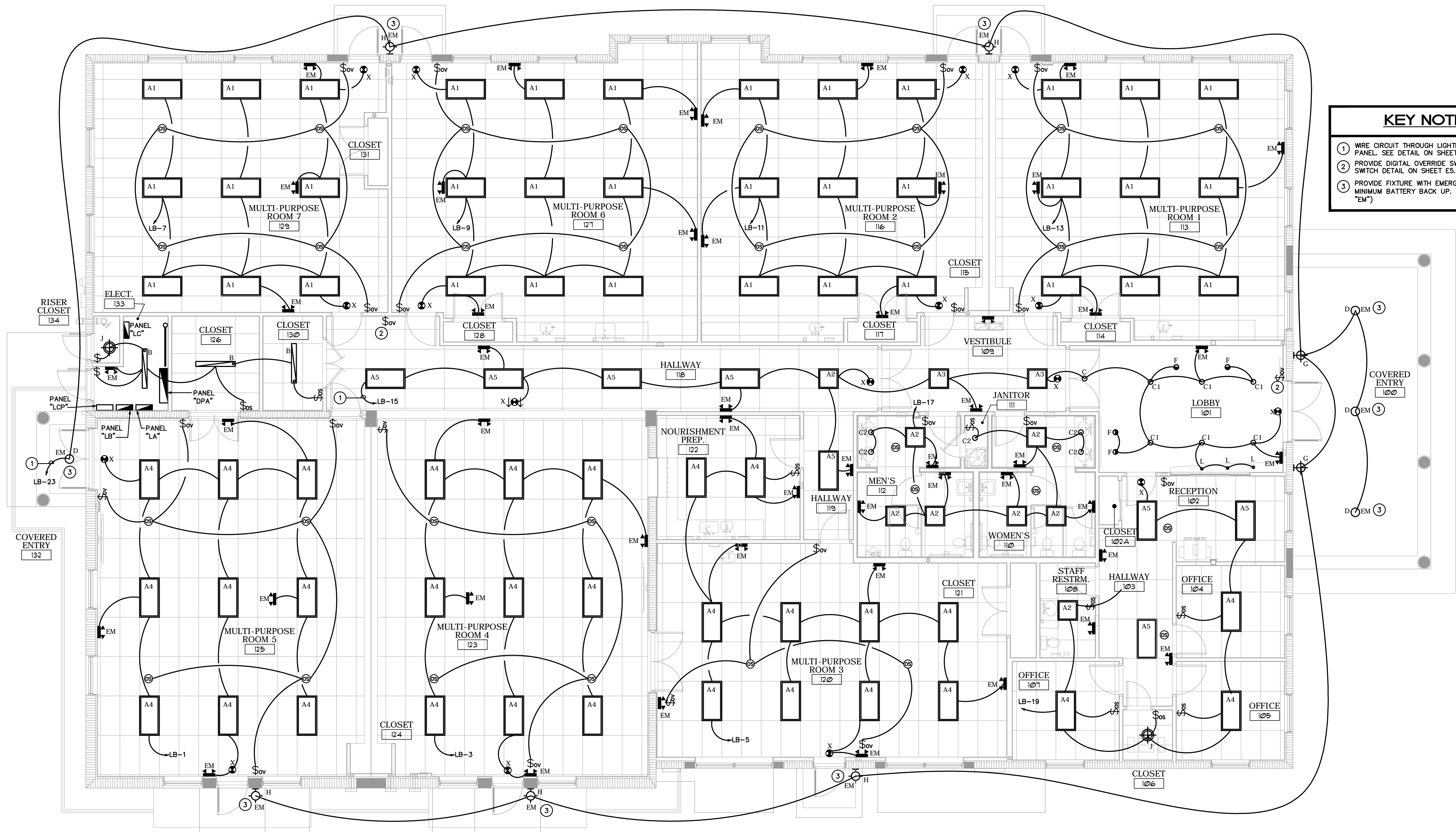
Slattery & Associates
ARCHITECTS PLANNERS
 2060 NW BOCA RATON BLVD.
 SUITE 2
 BOCA RATON, FL 33431
 TEL: 561-392-3848
 FAX: 561-392-5402
 WWW.SLATTERYARCHITECTS.COM

ACTIVITY CENTER FOR FLORENCE FULLER CHILD DEVELOPMENT CENTERS WEST CAMPUS
 S.W. 185TH STREET
 BOCA RATON, PALM BEACH COUNTY, FLORIDA

BIDDING NOT FOR CONSTRUCTION
 DATE OF SEAL: 4/2/08
 SLATTERY & ASSOCIATES
 FLORIDA REGISTRATION # AA0003381

LIGHTING PLAN
 DRAWN: JWC/PG/AE
 CHECKED: AK/MP
 DATE: 10-21-16
 SCALE: AS NOTED
 JOB NO.: 2011-64
 SHEET: E2.1
 PHASE: C.D. SET 10-21-16

- KEY NOTES**
- 1 WIRE CIRCUIT THROUGH LIGHTING CONTROL PANEL. SEE DETAIL ON SHEET ES.1.
 - 2 PROVIDE DIGITAL OVERRIDE SWITCH. SEE DIGITAL SWITCH DETAIL ON SHEET ES.1.
 - 3 PROVIDE FIXTURE WITH EMERGENCY 90 MINUTE MINIMUM BATTERY BACK-UP. (TYP FOR ALL "EM")



LIGHTING SCHEDULE

SYMBOL	MARK	DESCRIPTION	SYMBOL	MARK	DESCRIPTION	SYMBOL	MARK	DESCRIPTION
[Symbol]	A1, A4, A5	2' x 4' INTERIOR CEILING GRID LAY-IN, LED LAMPED, DIRECT - INDIRECT WITH CURVED DIFFUSER	[Symbol]	F	4" DIAM. CEILING RECESSED, LED LAMPED INTERIOR DOWNLIGHT W/ WALL WASH REFLECTOR / LENS.	[Symbol]	R	CEILING RECESSED HVAC RETURN AIR DIFFUSER
[Symbol]	A2, A3	2' x 2' INTERIOR CEILING GRID LAY-IN, LED LAMPED, DIRECT - INDIRECT WITH CURVED DIFFUSER	[Symbol]	G	18" WIDE DIAM. EXTERIOR WALL-MOUNT, LED LAMPED, DOWN LIGHT SCOFF	[Symbol]	S	CEILING RECESSED HVAC SUPPLY AIR DIFFUSER
[Symbol]	B	10" x 4" INTERIOR CEILING SURFACE-MOUNT, LED LAMPED, LINEAR WITH CURVED PRISMATIC DIFFUSER	[Symbol]	H	1 1/2" WIDE, EXTERIOR WALL-MOUNT, LED LAMPED, DOWN LIGHT SCOFF	[Symbol]	H/S	WALL MOUNT FIRE-ALARM SYSTEM HORN-STROBE DEVICE
[Symbol]	C1, C2	4" DIAM. CEILING RECESSED, LED LAMPED INTERIOR DOWNLIGHT.	[Symbol]	J	15" DIAM. INTERIOR CEILING SURFACE MOUNT, LED LAMPED, UTILITY WITH OPAQUE DIFFUSER IN	[Symbol]	X	CEILING MOUNT EDGE LIT LED EXIT SIGN W/ RED LETTERS
[Symbol]	D	6" DIAM. EXTERIOR CEILING RECESSED, LED LAMPED, RECESSED DOWNLIGHT.	[Symbol]	EF	INTERIOR CEILING RECESSED EXHAUST FAN	[Symbol]		2'x2' ACOUSTICAL CEILING SYSTEM SEE CEILING FINISHES LEGEND "C-1"
[Symbol]	EM	DUAL HEAD, INTERIOR WALL SURFACE-MOUNT, LED LAMPED, EMERGENCY LIGHT WITH BATTERY BACK-UP.	[Symbol]	L	2" DIAM. CEILING RECESSED, LED LAMPED INTERIOR MINI-DOWNLIGHT	[Symbol]		2'x4' ACOUSTICAL CEILING SYSTEM SEE CEILING FINISHES LEGEND "C-2"

LIGHTING PLAN
 3/16"=1'-0" NORTH

ISSUED FOR PERMIT
 ISSUED FOR CONSTRUCTION
 KAMM CONSULTING PROJECT # 2016-0024
 PROJECT MANAGER: JOHN CHIRWIN
 1407 West Newport Center Drive
 Deerfield Beach, Florida 33442
 Phone 954.949.2200 Fax 954.949.2201
 engineering@kammconsulting.com
 Certification of Authorization #8189
 10.21.16
 date
 signed