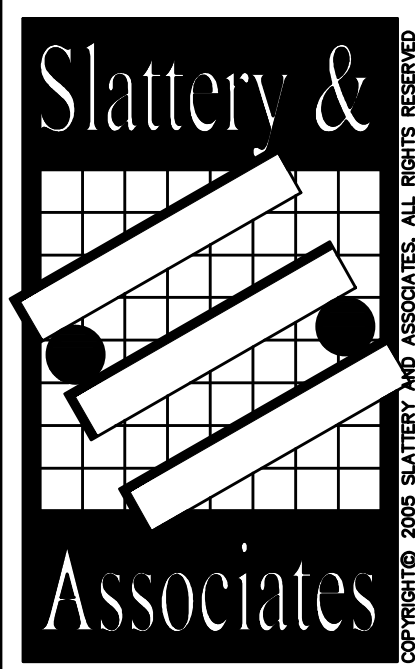


REVISIONS	BY



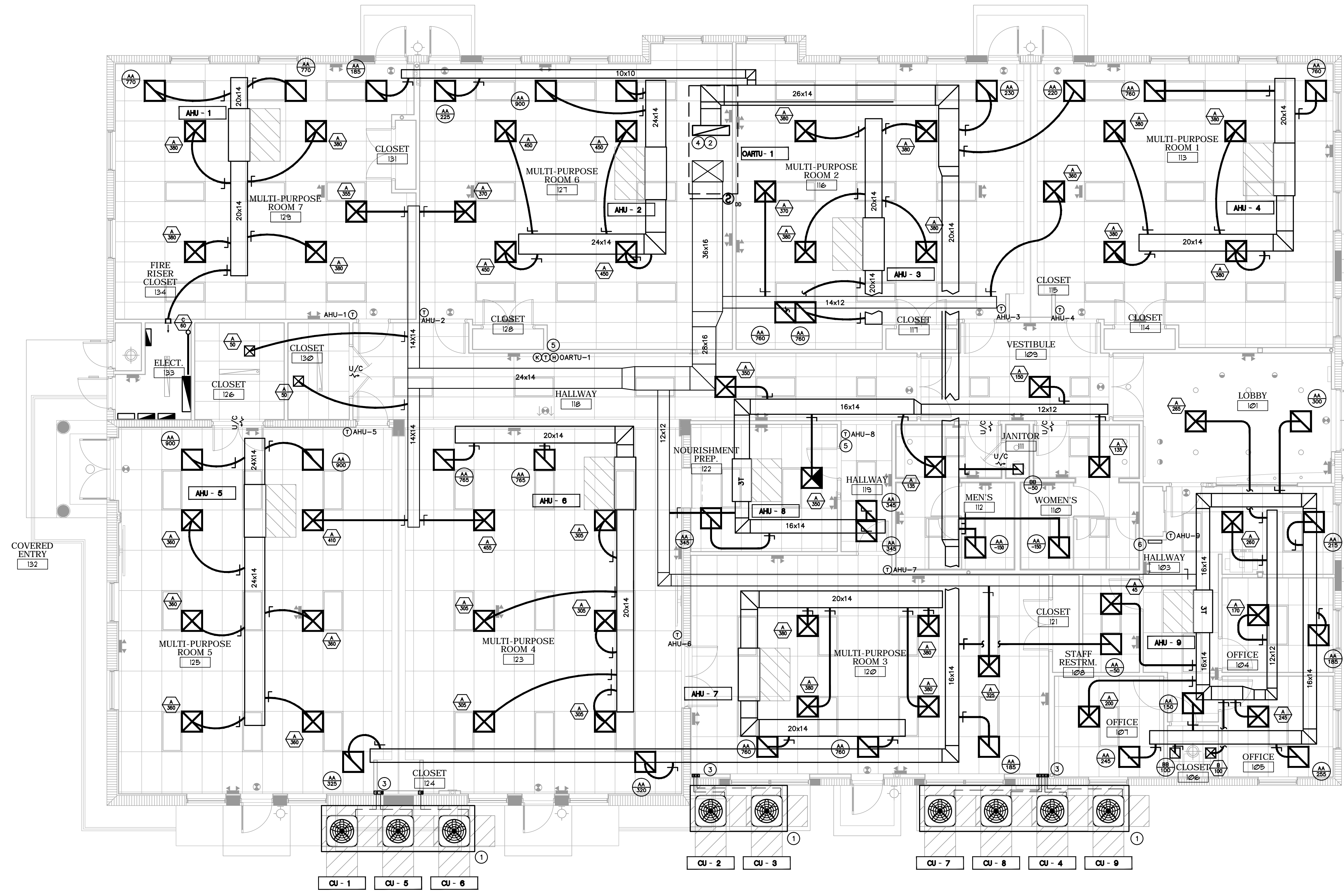
**ARCHITECTS  
PLANNERS**  
2060 NW BOCA RATON BLVD.  
SUITE 2  
BOCA RATON, FL 33431  
TEL: 561-392-3848  
FAX: 561-392-5402  
WWW.SLATTERYARCHITECTS.COM

**ACTIVITY CENTER  
FOR  
FLORENCE FULLER CHILD DEVELOPMENT CENTERS  
WEST CAMPUS  
S.W. 185TH STREET  
BOCA RATON, PALM BEACH COUNTY, FLORIDA**

**BIDDING  
NOT FOR  
CONSTRUCTION**  
DATE OF SEAL: 4/2/08  
SLATTERY & ASSOCIATES  
FLORIDA REGISTRATION # AA0003381

**MECHANICAL PLAN**  
DRAWN  
JWC/PG/AE  
CHECKED  
AK/MP  
DATE  
10-21-16  
SCALE  
AS NOTED  
JOB NO.  
2011-64  
SHEET  
**M2.1**

**PHASE: C.D. SET 10-21-16**



- MECHANICAL KEY NOTES**
- 1 CONCRETE PAD FOR CONDENSING UNITS. REFER TO CONDENSING UNIT MOUNTING DETAIL ON SHEET M7.1.
  - 2 24X12 RETURN AIR DUCT AND 12X10 EXHAUST AIR DUCT TO CONNECT TO PURGE SECTOR OF OARTU-1 ENERGY RECOVERY WHEEL.
  - 3 PROVIDE MIN.' 3" OFFSET OF WALL FOR REFRIGERANT LINES FROM CU'S TO AHU'S. FIELD VERIFY EXACT CONDITION. CONTRACTOR TO VERIFY FINAL REFRIGERANT LINE RUNS.
  - 4 CONTRACTOR TO COORDINATE EXACT MOUNTING LOCATION WITH STRUCTURAL JOIST. CONTRACTOR TO FIELD VERIFY EQUIPMENT CLEARANCES WITH EXISTING CONDITIONS.
  - 5 PROVIDE LOCK AND COVER FOR HVAC CONTROL EQUIPMENT
  - 6 OARTU-1 CONTROLLER. FINAL LOCATION BY OWNER (POWER BY ELECTRICAL).

**MECHANICAL PLAN**  
3/16"=1'-0" NORTH

ISSUED FOR PERMIT  
ISSUED FOR CONSTRUCTION

KAMM CONSULTING PROJECT # 2016-0024  
PROJECT MANAGER: JOHN CHIRGWIN

**KAMM Consulting**  
1407 West Newport Center Drive  
Deerfield Beach, Florida 33442  
Phone 954.949.2200 Fax 954.949.2201  
engineering@kammconsulting.com  
Certification of Authorization #81839

10.21.16  
date  
signed