

TYPICAL PLUMBING FIXTURE CONNECTION SCHEDULE						
TYPE	SOIL / WASTE	VENT	TRAP	CW	HW	REMARKS
2" HUB DRAIN	2"	2"	2"	-	-	PROVIDE 1/2" CW TRAP PRIMER CONNECTION.
3" HUB DRAIN	3"	2"	3"	-	-	PROVIDE 1/2" CW TRAP PRIMER CONNECTION.
COFFEE MAKER/WATER FILTER	-	-	-	1/2"	-	PROVIDE WITH VACUUM BREAKER.
DISHWASHER (RESIDENTIAL TYPE)	1"	-	-	-	1/2"	CONNECT WASTE TO KITCHEN SINK TAILPIECE. PROVIDE WITH VACUUM BREAKER.
ELECTRIC WATER COOLER	2"	2"	1 1/4"	1/2"	-	-
OUTLET BOX	-	-	-	1/2"	-	PROVIDE W/ INTEGRAL WATER HAMMER ARRESTOR.
WASHING MACHINE OUTLET BOX	3"	2"	2"	1/2"	1/2"	PROVIDE W/ INTEGRAL WATER HAMMER ARRESTORS.
SINK	2"	2"	1 1/2"	1/2"	1/2"	1.0 GPM AT 60 PSI MAXIMUM.
MOP SINK	3"	2"	3"	1/2"	1/2"	PROVIDE HOSE THREAD FAUCET WITH INTEGRAL VACUUM BREAKER.
LAVATORY (PUBLIC)	2"	2"	1 1/4"	1/2"	1/2"	0.5 GPM AT 60 PSI MAXIMUM. (0.25 GALLON METERING CYCLE)
REFRIGERATOR	-	-	-	-	1/2"	PROVIDE WITH VACUUM BREAKER.
WATER CLOSET (FLUSH VALVE)	3" OR 4"	2"	INTEGRAL	1"	-	1.28 GALLONS PER FLUSHING CYCLE MAXIMUM.
WATER CLOSET (FLUSH TANK)	3" OR 4"	2"	INTEGRAL	1/2"	-	1.28 GALLONS PER FLUSHING CYCLE MAXIMUM.
URINAL	2"	2"	INTEGRAL	3/4"	-	0.128 GALLONS PER FLUSHING CYCLE MAXIMUM.

NOTE: PLUMBING FIXTURE CONNECTION SCHEDULE IS SHOWN FOR CONVENIENCE ONLY. PLUMBING CONTRACTOR TO CONFIRM FINAL PLUMBING FIXTURE CONNECTION SIZES WITH PLUMBING FIXTURE MANUFACTURER'S REQUIREMENTS. ALL FIXTURES SHALL COMPLY WITH REQUIREMENTS OF LOCAL WATER-USE EFFICIENCY ORDINANCES.

### PLUMBING NOTES

- THE CONTRACTOR SHALL FURNISH ALL LABOR, MATERIALS, AND EQUIPMENT NECESSARY FOR THE INSTALLATION OF A COMPLETE SCOPE OF WORK. ALL WORKMANSHIP AND MATERIALS SHALL BE IN STRICT ACCORDANCE WITH THE FLORIDA BUILDING CODE 5th EDITION (2014) - PLUMBING, APPLICABLE LOCAL CODES, RULES, AND ORDINANCES.
- PLUMBING CONTRACTOR SHALL VISIT THE JOB SITE AND THOROUGHLY FAMILIARIZE HIMSELF WITH ALL EXISTING CONDITIONS.
- ALL MATERIALS SHALL BE NEW AND OF GOOD QUALITY.
- ALL WORK SHALL BE PERFORMED BY A LICENSED PLUMBING CONTRACTOR IN A FIRST CLASS WORKMANLIKE MANNER. THE COMPLETE SYSTEM SHALL BE LEAK-FREE AND OPERATIONAL. ALL EXCAVATION AND BACKFILL AS REQUIRED FOR THIS PHASE OF CONSTRUCTION SHALL BE A PART OF THIS CONTRACT.
- REQUIRED INSURANCE SHALL BE PROVIDED BY THE PLUMBING CONTRACTOR FOR PROTECTION AGAINST PUBLIC LIABILITY AND PROPERTY DAMAGE FOR THE DURATION OF THE WORK.
- PLUMBING CONTRACTOR SHALL SECURE AND PAY FOR ALL PERMITS, FEES, INSPECTIONS AND TESTS. PLUMBING CONTRACTOR SHALL OBTAIN PERMIT AND APPROVED SUBMITTALS PRIOR TO BEGINNING WORK OR ORDERING EQUIPMENT. PLUMBING CONTRACTOR MUST BE PRESENT FOR ALL INSPECTIONS OF HIS WORK BY REGULATORY AUTHORITIES.
- CONTRACTOR SHALL SUBMIT TO ARCHITECT/ENGINEER, FOR REVIEW & APPROVAL, FIVE (5) SETS OF MANUFACTURER'S CUT SHEETS FOR EACH FIXTURE, PIPING/FITTING MATERIAL AND EQUIPMENT ITEM WITH ASSOCIATED CONTROLS, THAT ARE INCLUDED IN THE CONTRACT.
- DRAWINGS ARE DIAGRAMMATIC. DO NOT SCALE FOR THE EXACT LOCATION OF FIXTURES, PIPING, EQUIPMENT, ETC.
- ALL WORK SHALL BE COORDINATED WITH OTHER TRADES TO AVOID INTERFERENCE WITH THE PROGRESS OF CONSTRUCTION. REPORT ANY DISCREPANCY TO ARCHITECT/ENGINEER PRIOR TO BEGINNING CONSTRUCTION.
- VERIFY LOCATION, SIZE, DIRECTION OF FLOW AND INVERT ELEVATIONS OF ALL EXISTING UTILITIES PRIOR TO BEGINNING OF CONSTRUCTION. ADVISE ARCHITECT/ENGINEER OF ANY DISCREPANCIES.
- WATER DISTRIBUTION PIPING ABOVE AND BELOW GROUND SHALL BE TYPE "L" COPPER. ALTERNATE PIPING & FITTING MATERIALS MAY BE USED IN ACCORDANCE WITH FLORIDA BUILDING CODE 5th EDITION (2014) PLUMBING, TABLES 605.3, 605.4 & 605.5, WHEN APPROVED BY ENGINEER OF RECORD AND LOCAL AUTHORITY HAVING JURISDICTION. PROVIDE ALTERNATE FOR CPVC PIPING & FITTINGS EQUAL TO LUBRIZOL CORZAN OR FLOW-GUARD GOLD. PROVIDE ALTERNATE FOR PEX TYPE 'A' PIPING & FITTINGS EQUAL TO UPONOR. ALTERNATES ARE PERTINENT FOR WATER SERVICES KNOWN OR DETERMINED TO HAVE ACIDIC CHARACTERISTICS OR OTHER PARTICULAR CIRCUMSTANCES AS DEEMED APPROPRIATE BY DIRECTIVE FROM THE OWNER. CONTRACTOR SHALL PERFORM A WATER TEST TO DETERMINE WATER CHEMISTRY PRIOR TO ANY WORK OR PIPING INSTALLATION AND SHALL SUBMIT TEST RESULTS TO THE ARCHITECT/ENGINEER FOR REVIEW AND APPROVAL. DISINFESTION OF POTABLE WATER SYSTEM SHALL COMPLY WITH FLORIDA BUILDING CODE 5th EDITION (2014) - PLUMBING, SECTION 610. ALL WATER PIPING & FITTINGS SHALL BE OF DOMESTIC MANUFACTURE, SPECIFICALLY IN THE UNITED STATES OF AMERICA.
- SOIL, WASTE, VENT, AND RAINWATER (DWR) PIPING & FITTINGS SHALL BE CAST IRON OR PVC, WHERE CODE ALLOWS. PVC MAY NOT BE USED THRU RATED ASSEMBLIES OR IN PLENUMS. PVC PIPING SHALL BE SOLID-CORE ONLY. FOAM-CORE PIPING SHALL NOT BE ACCEPTED. CAST IRON PIPING & FITTINGS SHALL BEAR THE CISPI-301 MARK. ALL DWV PIPING & FITTINGS SHALL BE OF DOMESTIC MANUFACTURE, SPECIFICALLY IN THE UNITED STATES OF AMERICA.
- ALL FIXTURES MUST BE PROVIDED WITH READILY ACCESSIBLE ANGLE STOPS AND APPROPRIATELY MARKED ACCESS PANELS (WHERE REQUIRED). COORDINATE LOCATIONS WITH GENERAL CONTRACTOR PRIOR TO INSTALLATION.
- PROVIDE APPROVED WATER HAMMER ARRESTORS FOR ALL (GROUP) PLUMBING FIXTURES, SIZED & LOCATED PER MANUFACTURER'S INSTALLATION INSTRUCTIONS & PDI-WH201.
- PROVIDE DIELECTRIC COUPLINGS OR FLANGES BETWEEN ALL DISSIMILAR METALS IN PIPING AND EQUIPMENT CONNECTIONS.
- ISOLATE COPPER PIPING FROM METALLIC HANGERS OR SUPPORTS WITH ISOLATOR PADS OR NON-CONDUCTIVE MATERIAL.
- ALL FIRE RATED FLOOR AND WALL PENETRATIONS SHALL BE PROPERLY PROTECTED FROM FIRE, SMOKE AND WATER PENETRATION BY FILLING ANNULAR SPACE BETWEEN PIPING AND SLEEVES WITH INTUMESCENT CAULK, TO ACHIEVE THE SAME RATING AS WALLS OR FLOORS, AS PART OF THE PLUMBING CONTRACTOR'S WORK.
- PLUMBING CONTRACTOR SHALL GUARANTEE ALL MATERIALS AND WORKMANSHIP FREE FROM DEFECTS FOR A PERIOD OF NOT LESS THAN ONE (1) YEAR FROM DATE OF ACCEPTANCE BY OWNER. CORRECTION OF ANY DEFECTS SHALL BE COMPLETED WITHOUT ADDITIONAL CHARGE AND SHALL INCLUDE REPLACEMENT OR REPAIR OF ANY OTHER PHASE OF THE INSTALLATION WHICH MAY HAVE BEEN DAMAGED.
- PROVIDE ACCESS PANELS FOR ALL CONCEALED VALVES. ACCESS PANELS IN RATED WALLS SHALL MAINTAIN THE SAME RATING AND SHALL MATCH THE FINISH OF THE WALL IN WHICH IT IS INSTALLED.
- PROVIDE COMBINATION CLEANOUT PLUG AND COVER PLATE OR ACCESS PANEL FOR ALL WALL CLEANOUTS. FINISH TO MATCH NEARBY FIXTURE TRIM.
- NO COMBUSTIBLE MATERIAL SHALL BE INSTALLED IN MECHANICAL ROOMS NOR IN CEILING SPACES WHERE USED AS RETURN AIR PLENUMS.
- NO WATER, SANITARY OR DRAINAGE PIPING SHALL BE INSTALLED IN ELECTRICAL OR ELEVATOR EQUIPMENT ROOMS.
- ALL CONTROL VALVES SHALL BE TAGGED AND MARKED. A REPRODUCIBLE DIAGRAM LOCATING ALL VALVES SHALL BE FURNISHED FOR OWNER/OPERATOR.
- CONDENSATE DRAIN PIPING SHALL BE TYPE "L" COPPER WITH ARMAFLEX INSULATION AND A VAPOR-BARRIER JACKET PER FLORIDA BUILDING CODE 5th EDITION (2014) - ENERGY CONSERVATION, TABLE C403.2.8. PVC WITHOUT INSULATION IS ACCEPTABLE FOR RISERS AND BELOW GRADE PIPING. WHEN USED IN A RETURN AIR PLENUM, PVC PIPING WITH INSULATION IS ACCEPTABLE IN LOCATIONS WHERE ALLOWED BY LOCAL CODES. CONDENSATE PIPING SHALL NOT DRAIN INTO THE ROOFING SYSTEM NOR ANY OF ITS COMPONENTS. CONDENSATE PIPING ARRANGEMENT IS EXEMPT FROM MINIMUM EQUIPMENT CLEARANCE REQUIREMENTS PER FLORIDA BUILDING CODE 5th EDITION (2014), SECTION 1522.3.5. ALL HORIZONTAL RAINWATER PIPING RUN ABOVE FINISHED FLOOR THAT RECEIVES CONDENSATE DISCHARGE SHALL BE INSULATED WITH ARMAFLEX AND A VAPOR-BARRIER JACKET.
- HOT WATER PIPING INSULATION SHALL BE PROVIDED IN ACCORDANCE WITH FLORIDA BUILDING CODE 5th EDITION (2014) - PLUMBING, TABLE 607.5 & FLORIDA BUILDING CODE 5th EDITION (2014) - ENERGY CONSERVATION, TABLE C403.2.8. CONTRACTOR SHALL USE ARMAFLEX OR EQUAL WHERE APPLICABLE. WHERE DOMESTIC WATER TEMPERATURES CAN CAUSE SWEATING, ALL COLD WATER PIPING SHALL BE INSULATED WITH ARMAFLEX INSULATION AND A VAPOR-BARRIER JACKET, PER FLORIDA BUILDING CODE 5th EDITION (2014) - ENERGY CONSERVATION, TABLE C403.2.8.
- AIR ADMITTANCE VALVES MAY BE USED AS AN ALTERNATE TO VENT PIPING THRU ROOF WHERE ACCEPTED BY THE LOCAL AUTHORITY HAVING JURISDICTION. INSTALLATION METHODS SHALL BE IN ACCORDANCE WITH MANUFACTURER'S RECOMMENDATIONS AND REQUIREMENTS. 2015 CODE UPDATE.

### PLUMBING SHEET INDEX

SHEET#	DESCRIPTION
P0.1	PLUMBING NOTES, LEGENDS, AND DETAILS
P0.2	PLUMBING DETAILS CONT.
P2.1	SANITARY PLAN
P2.2	CONDENSATE PIPING PLAN
P2.3	ROOF DRAINAGE PLAN
P3.1	DOMESTIC WATER PLAN
P5.1	DOMESTIC WATER/SANITARY ISOMETRICS
P5.2	STORM DRAINAGE ISOMETRICS

### PLUMBING FIXTURE SCHEDULE

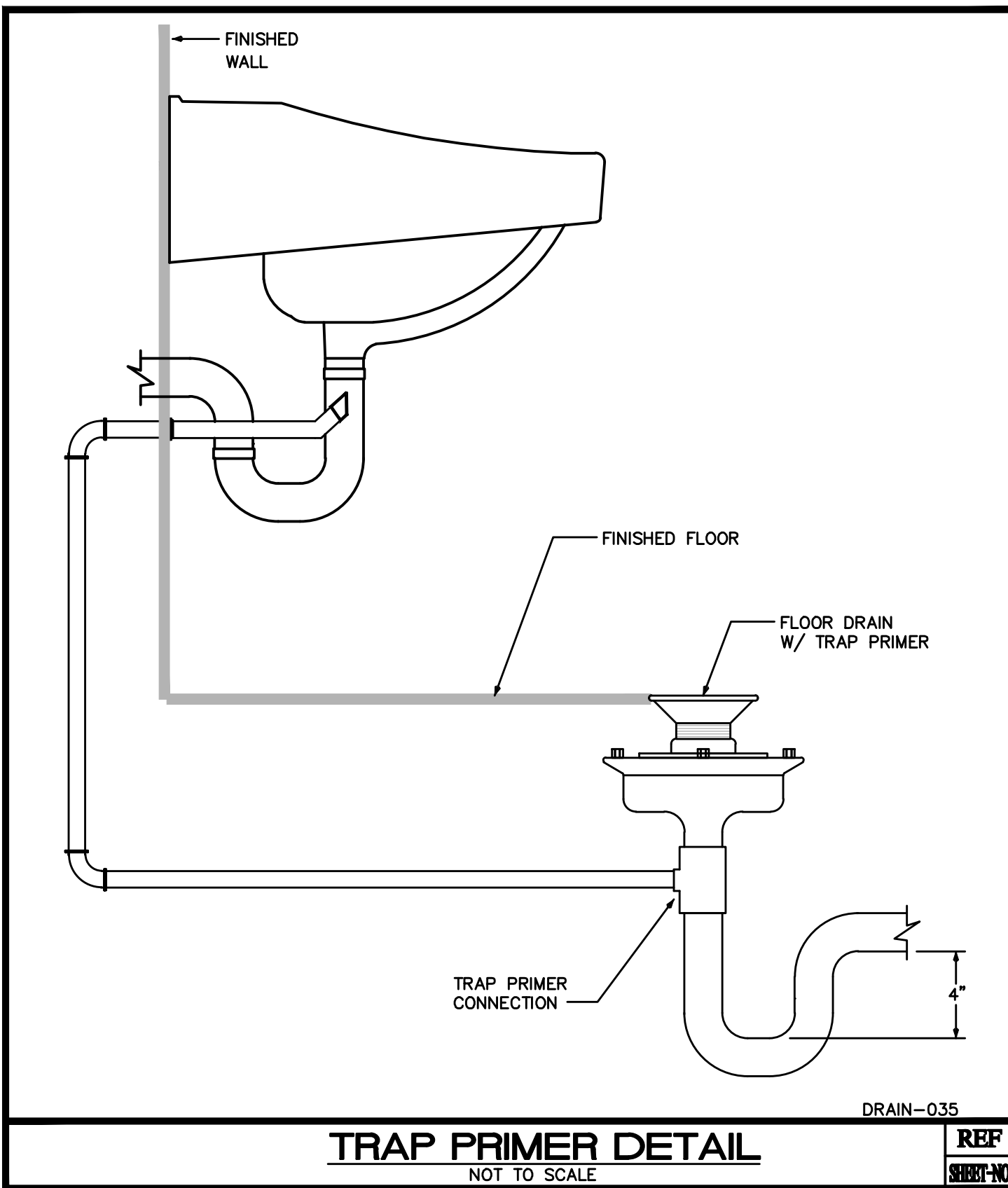
L1	HANDICAP LAVATORY, TOTO MODEL #LT307.4, WALL-MOUNT LAVATORY, WHITE VITREOUS CHINA, 4" CENTERS WITH T&S BRASS MODEL #B-2711-VF05, 0.5 GPM, SINGLE-LEVER MANUALLY OPERATED CENTERSET FAUCET. PROVIDE WITH MIFAB SERIES MC-41 CONCEALED-ARM CARRIER AND PLUMBEREX PRO EXTREME UNDER LAV SUPPLY & TRAP PROTECTORS.
L2	HANDICAP LAVATORY, TOTO MODEL #LT307.4, WALL-MOUNT LAVATORY, WHITE VITREOUS CHINA, 4" CENTERS WITH T&S BRASS MODEL #B-2711-VF05, 0.5 GPM, SINGLE-LEVER MANUALLY OPERATED CENTERSET FAUCET. PROVIDE WITH MIFAB SERIES MC-41 CONCEALED-ARM CARRIER AND PLUMBEREX PRO EXTREME UNDER LAV SUPPLY & TRAP PROTECTORS.
WC1	HANDICAP WATER CLOSET, TOTO MODEL #CST454CEFG, 1.28 GPF, TWO-PIECE, FLOOR-MOUNTED, UNIVERSAL HEIGHT WITH ELONGATED BOWL. PROVIDE WITH TRIP LEVER TO WIDE SIDE OF ROOM AND WITH OPEN-FRONT, COMMERCIAL-GRADE, ELONGATED SEAT WITH CHECK HINGES BY TOTO, OLSONITE, BEMIS, OR CHURCH.
WC2	HANDICAP WATER CLOSET, SLOAN MODEL #METS 9020-1.28 TWO PIECE, FLOOR-MOUNTED WITH ELONGATED BOWL. PROVIDE WITH TRIP LEVER TO WIDE SIDE OF ROOM AND WITH OPEN-FRONT, COMMERCIAL-GRADE, ELONGATED SEAT WITH CHECK HINGES BY OLSONITE, BEMIS, OR CHURCH.
UR1	HANDICAP URINAL, SLOAN MODEL #HUS-1000.1001-0.125, WALL-MOUNT, TOP-SPUD, 0.125 GPF MANUAL FLUSH VALVE. PROVIDE WITH MIFAB SERIES MC-32 DOUBLE-PLATE CARRIER.
SK1	KITCHEN SINK, JUST MODEL #SL-ADA-2122-A-GR, ADA-COMPLIANT, 6-1/2" DEEP SINGLE-BASIN, LEDGE-BACK, SELF-RIMMING, 18-GAUGE TYPE 304 STAINLESS STEEL, WITH GRID STRAINER AND T&S BRASS FAUCET MODEL #B-2730-WS, SINGLE-LEVER, 9" SWING SPOUT, 1.5 GPM AERATOR, CERAMIC DISC CARTRIDGE AND SIDE-SPRAY ACCESSORY.
SK2	KITCHEN SINK, JUST MODEL #SL-ADA-2122-A-GR, ADA-COMPLIANT, 6-1/2" DEEP SINGLE-BASIN, LEDGE-BACK, SELF-RIMMING, 18-GAUGE TYPE 304 STAINLESS STEEL, WITH GRID STRAINER AND T&S BRASS FAUCET MODEL #B-2730-WS, SINGLE-LEVER, 9" SWING SPOUT, 1.5 GPM AERATOR, CERAMIC DISC CARTRIDGE AND SIDE-SPRAY ACCESSORY.
WCO	WALL CLEANOUT, MIFAB C1430-RD WITH BRONZE PLUG, STAINLESS STEEL COVER, AND SCREW.
EW1	BARRIER-FREE BI-LEVEL ELECTRIC WATER COOLER, ELKAY MODEL #EZSTL8C, NSF/ANSI 61 COMPLIANT WITH FRONT & SIDE PUSH PADS AND BI-LEVEL CARRIER EQUAL TO MIFAB SERIES MC-33-2.
MSK1	MOP SINK, STERN WILLIAMS MODEL #SBC-1700, TERRAZZO WITH RIM GUARDS & WALL GUARDS. PROVIDE WITH T&S BRASS FAUCET MODEL #B-0674-RGH-00J, ROUGH CHROME WITH CERAMIC-DISC CARTRIDGES & INTEGRAL LOOSE KEY STOPS.
EW11	ELECTRIC WATER HEATER, LOCHINVAR MODEL #EJW015CS, 15 GALLON, 208V/1Ø/4.5KW.

#### GENERAL NOTES:

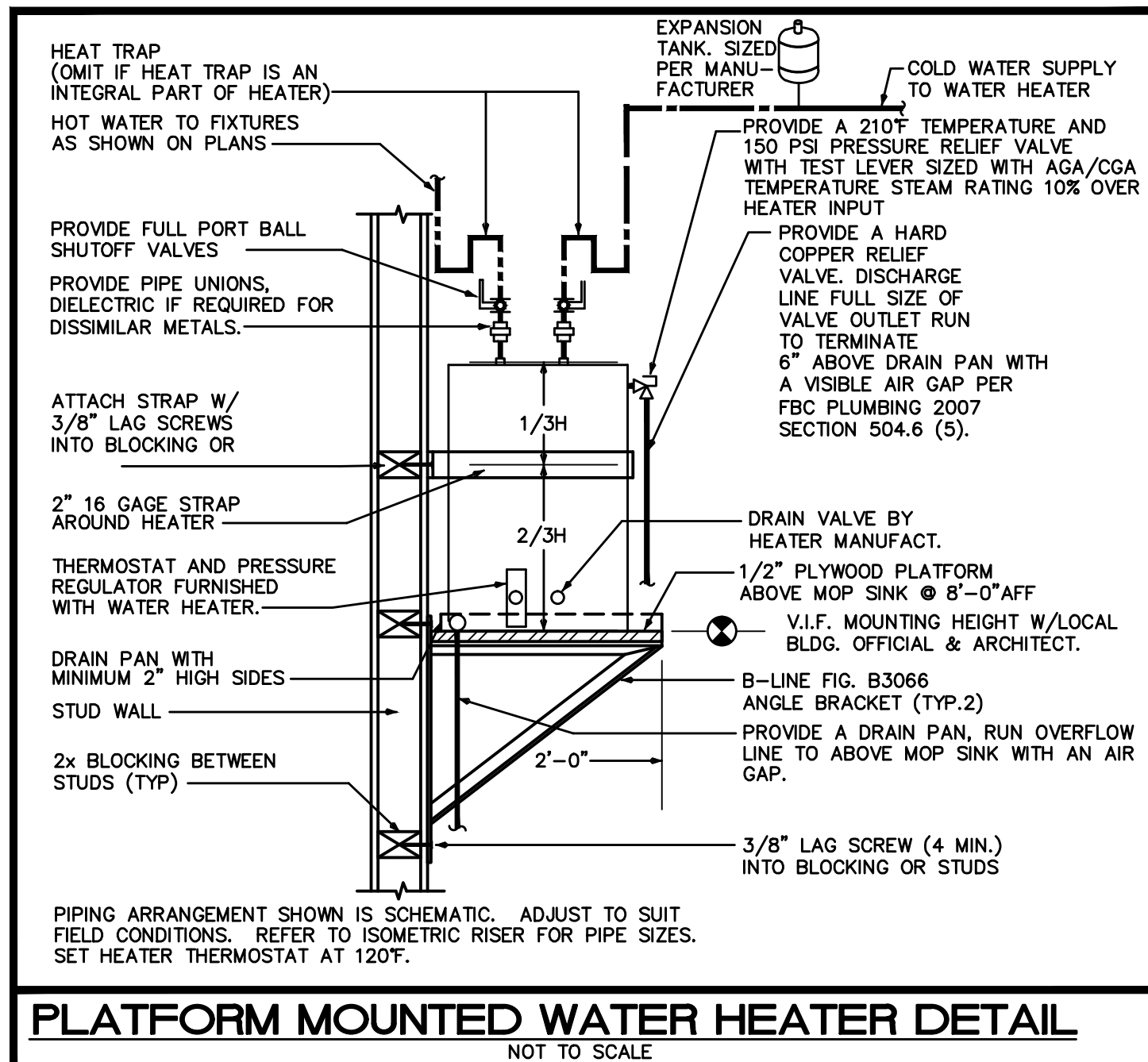
- FIXTURES SHALL BE AS SHOWN OR EQUAL.
- ALL FIXTURES SHALL COMPLY WITH TABLE 604.4 OF FBC 2014.
- ALL FIXTURE TRIM PACKAGES INCLUDING BUT NOT LIMITED TO TRAP, ANGLE STOP, FLUSH VALVE, SUPPLY TUBES, AND CLEANOUT COVER PLATES SHALL BE OF THE SAME FINISH AS THE ABOVE SPECIFIED FAUCET AND PER ARCHITECTURAL FINISH SCHEDULE.
- ALL FIXTURES SHALL BE ROUGHED IN PER MANUFACTURER CUT SHEET TO MAINTAIN UNIFORMITY.

### PLUMBING LEGEND

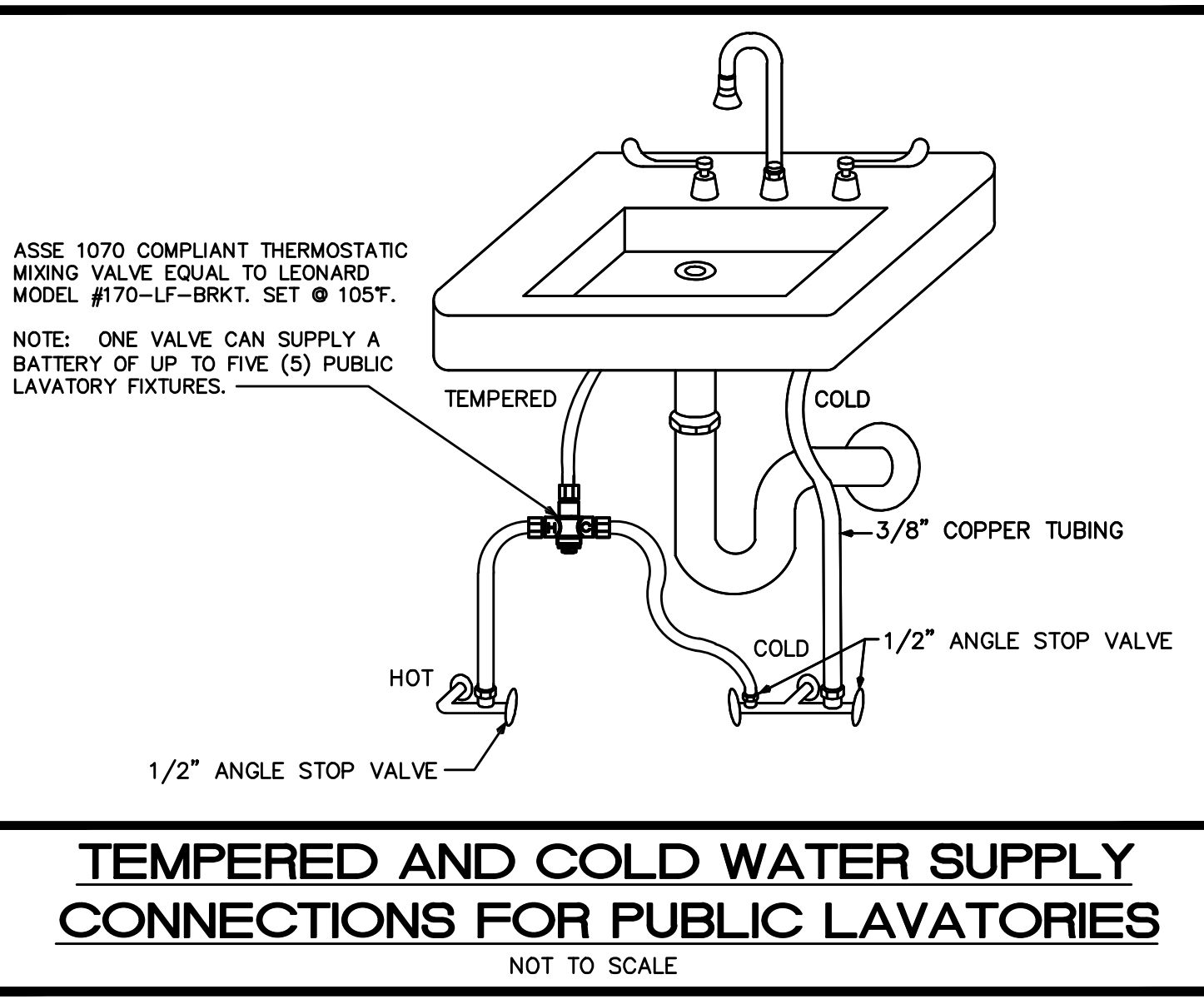
CO	CLEAN OUT	—S—S	SANITARY SEWER PIPING
S.O.V.	SHUT-OFF VALVE	—V—V	VENT PIPING
COTC	CLEAN OUT TO GRADE	—D—D	DOMESTIC COLD WATER PIPING
FD	FLOOR DRAIN	—H—H	HOT WATER PIPING (110')
CW	DOMESTIC COLD WATER	—H—H	HOT WATER PIPING (140')
HW	DOMESTIC HOT WATER	—H—H	HOT WATER RECIRCULATING PIPING
HWR	DOMESTIC HOT WATER RECIRCULATING	—C—C	CONDENSATE PIPING
HB	HOSE BIBB	—CA—	COMPRESSED AIR PIPING
VTR	VENT THRU ROOF	—T&P—	TEMPERATURE AND PRESSURE RELIEF
X	GATE VALVE	—SD—	STORM DRAIN PIPING
Z	GLOBE VALVE	—G—	GAS PIPING
Q	CHECK VALVE	—P—	PIPE RISE UP
Q	GAS SOLENOID VALVE	—D—	PIPE DOWN OR DROP
Q	GAS COCK	—C—	CAPPED END OF PIPE
Q	WATER HAMMER ARRESTOR (PDI No.)	—P—	POINT OF CONNECTION
Q	FLOOR DRAIN	—T—	P-TRAP



TRAP PRIMER DETAIL  
NOT TO SCALE



PLATFORM MOUNTED WATER HEATER DETAIL  
NOT TO SCALE



TEMPERED AND COLD WATER SUPPLY CONNECTIONS FOR PUBLIC LAVATORIES  
NOT TO SCALE

SHOCK ARRESTOR SCHEDULE			
P.D.I. DESIGNATION	MANUF. & MODEL	FIXTURE UNITS	CONNECTION
A	SIoux CHIEF 652-A	1-11	1/2"
B	SIoux CHIEF 653-B	12-32	3/4"
C	SIoux CHIEF 654-C	33-60	1"

SIoux CHIEF SHOCK ARRESTORS APPROVED FOR INSTALLATION WITH NO ACCESS DOOR REQUIRED. CONFORMS TO ANSI/ASSE 1010 STANDARDS.

SLOPE OF HORIZONTAL DRAINAGE PIPE	
SIZE (Inches)	MINIMUM SLOPE (inch per foot)
2-1/2 or less	1/4
3 to 6	1/8
8 or larger	1/16

TABLE 704.1 OF THE FLORIDA PLUMBING CODE 2014

REVISIONS	BY

**Slattery & Associates**  
ARCHITECTS PLANNERS  
2060 NW BOCA RATON BLVD.  
SUITE 2  
BOCA RATON, FL 33431  
TEL: 561-392-3848  
FAX: 561-392-5402  
WWW.SLATTERYARCHITECTS.COM

ACTIVITY CENTER FOR FLORENCE FULLER CHILD DEVELOPMENT CENTERS WEST CAMPUS S.W. 185TH STREET BOCA RATON, PALM BEACH COUNTY, FLORIDA

BIDDING NOT FOR CONSTRUCTION  
DATE OF SEAL: 4/2/08  
SLATTERY & ASSOCIATES  
FLORIDA REGISTRATION # AA0003381

PLUMBING NOTES

DRAWN	JWC/PG/AE
CHECKED	AK/MP
DATE	10-21-16
SCALE	AS NOTED
JOB NO.	2011-64
SHEET	P0.1

PHASE: C. D. SET 10-21-16

ISSUED FOR PERMIT  
ISSUED FOR CONSTRUCTION

KAMM CONSULTING PROJECT # 2016-0024  
PROJECT MANAGER: JOHN CHIRGWIN

1407 West Newport Center Drive  
Deerfield Beach, Florida 33442  
Phone 954.949.2200 Fax 954.949.2201  
engineering@kammconsulting.com  
Certification of Authorization #8189

10.21.16  
date  
signed