

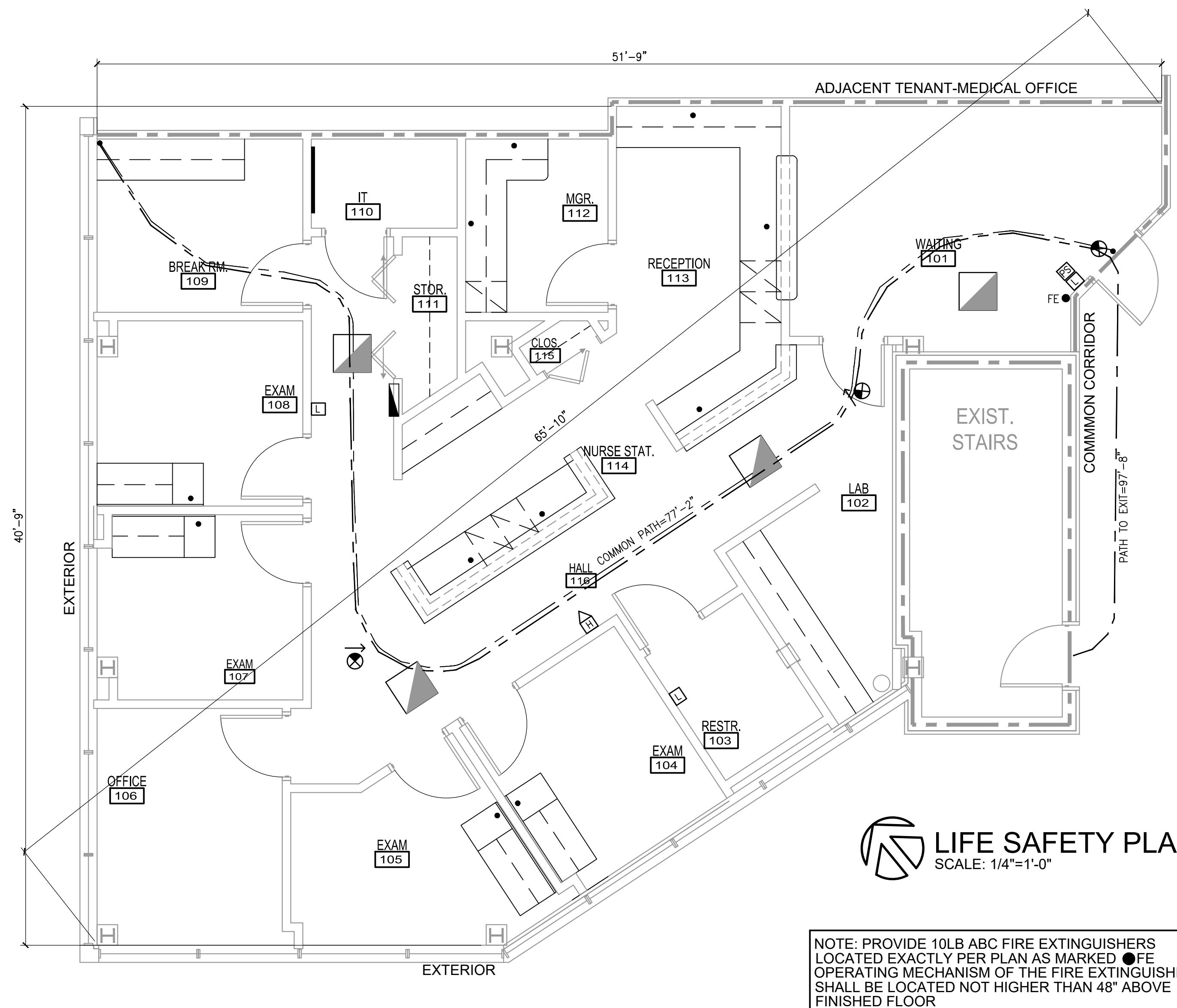
LCA AA 003432
Architecture, Inc.

1975 Sansbury's Way
Suite 108
West Palm Beach, FL 33411

Phone: (561) 493-4787
Fax: (561) 493-4786

REVISIONS / DATE

**Interior Improvement for
Prospective Doctors Suite**
 9960 Central Park Boulevard, Suite 375
 Boca Raton, FL 33428



LIFE SAFETY PLAN
SCALE: 1/4"=1'-0"

NOTE: PROVIDE 10LB ABC FIRE EXTINGUISHERS LOCATED EXACTLY PER PLAN AS MARKED ● FE OPERATING MECHANISM OF THE FIRE EXTINGUISHER SHALL BE LOCATED NOT HIGHER THAN 48" ABOVE FINISHED FLOOR

OCCUPANT LOAD
1,584 SF/100 = 16 OCC.

<p>PLAN LEGEND</p> <p>● FE WALL HUNG FIRE EXTINGUISHER 10LB ABC</p> <p>--- EXIST. 1 HR FIRE RATED PARTITION</p>	<p>DOOR REQUIREMENTS</p> <p>ALL DOOR HARDWARE TO COMPLY WITH NFPA 101 AND FBC AND SHALL NOT REQUIRE KEY OPERATION IN DIRECTION OF EXIT. ALL LOCK SETS SHALL BE ACCESSIBLE PER ADA AND FBC-ACCESSIBILITY</p>
<p>LIGHTING</p> <p>⊙ EXIT SIGN</p> <p>⊠ FIXTURE W/ EMERG. BATTERY BACKUP & RELAY</p> <p>⊡ WALL MOUNTED EMERGENCY BATTERY PACK</p>	<p>FINISH REQUIREMENTS</p> <p>ALL WALL AND CEILING FINISHES IN PASSAGEWAYS SHALL CONFORM TO CLASS B REQUIREMENTS OF FBC AND NFPA 101.</p> <p>ALL WALL AND CEILING FINISHES IN ROOMS AND ENCLOSED SPACES SHALL CONFORM TO CLASS C REQUIREMENTS FBC. ALL FLOORS FINISHES SHALL CONFORM TO CLASS II REQUIREMENTS OF FBC AND NFPA 101.</p>
<p>F/A SYMBOL LEGEND</p> <p>Ⓜ FIRE ALARM HORN WITH VISUAL STROBE LTG.</p> <p>Ⓛ FIRE ALARM STROBE</p>	<p>CODE NOTES:</p> <p>1. FIRE RATED PARTITIONS SHALL HAVE SIGN OR STENCIL PERMANENTLY POSTED ABOVE CEILING, COMPLYING WITH FBC THAT SHALL READ: "FIRE AND/OR SMOKE BARRIER - PROTECT ALL OPENINGS."</p> <p>REFER TO SHEET T.1 FOR GENERAL CODE NOTES</p>
<p>PROJECT DATA</p> <p>REFER TO SHEET T.1</p>	

LESŁAW A. CZACZYK AIA

AR 00015391

PROJ. NO.	16209
DESIGNED BY	LAC
DRAWN BY	AAA
DATE	10/14/16
SCALE	AS SHOWN

LIFE SAFETY PLAN, NOTES