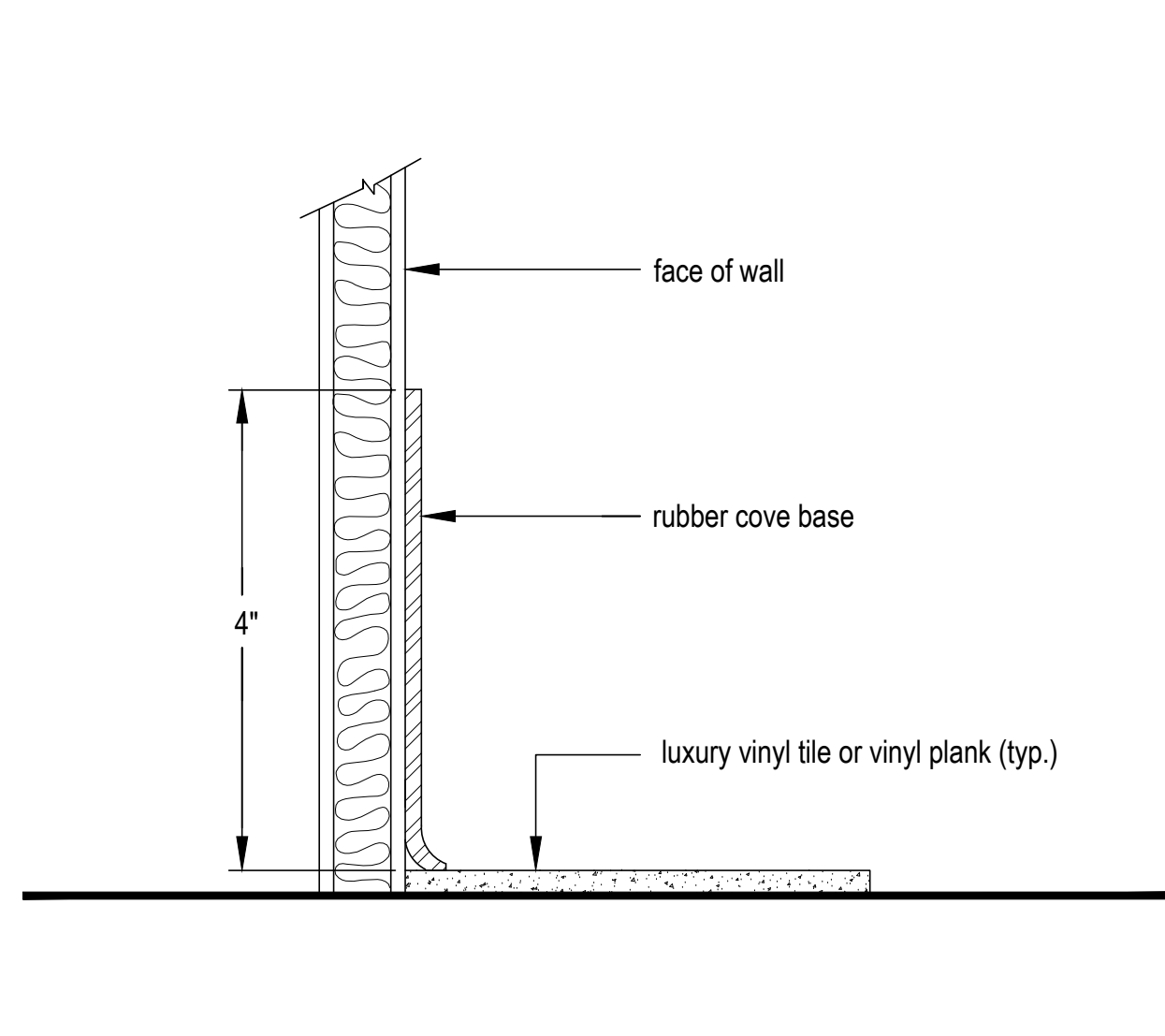
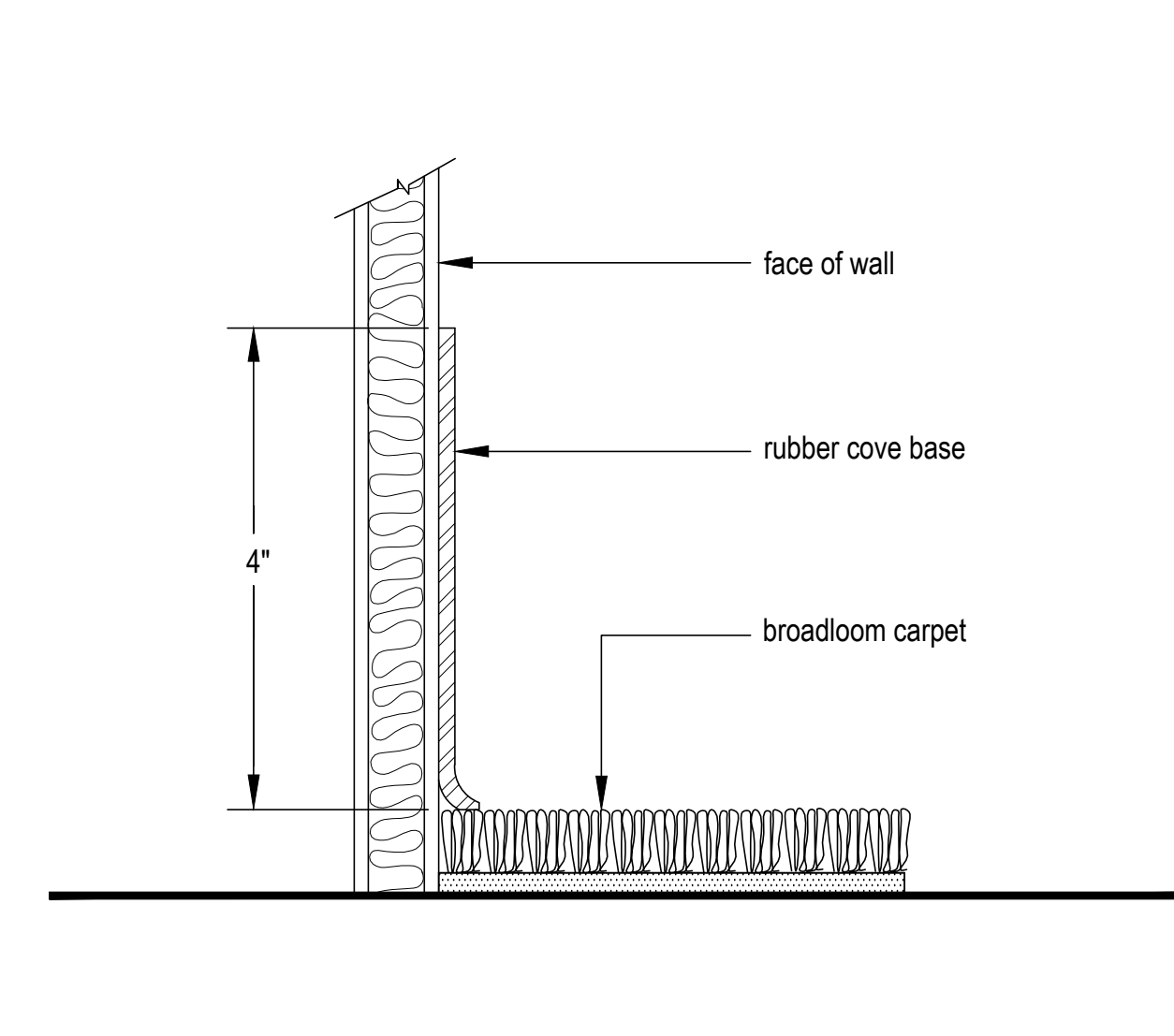


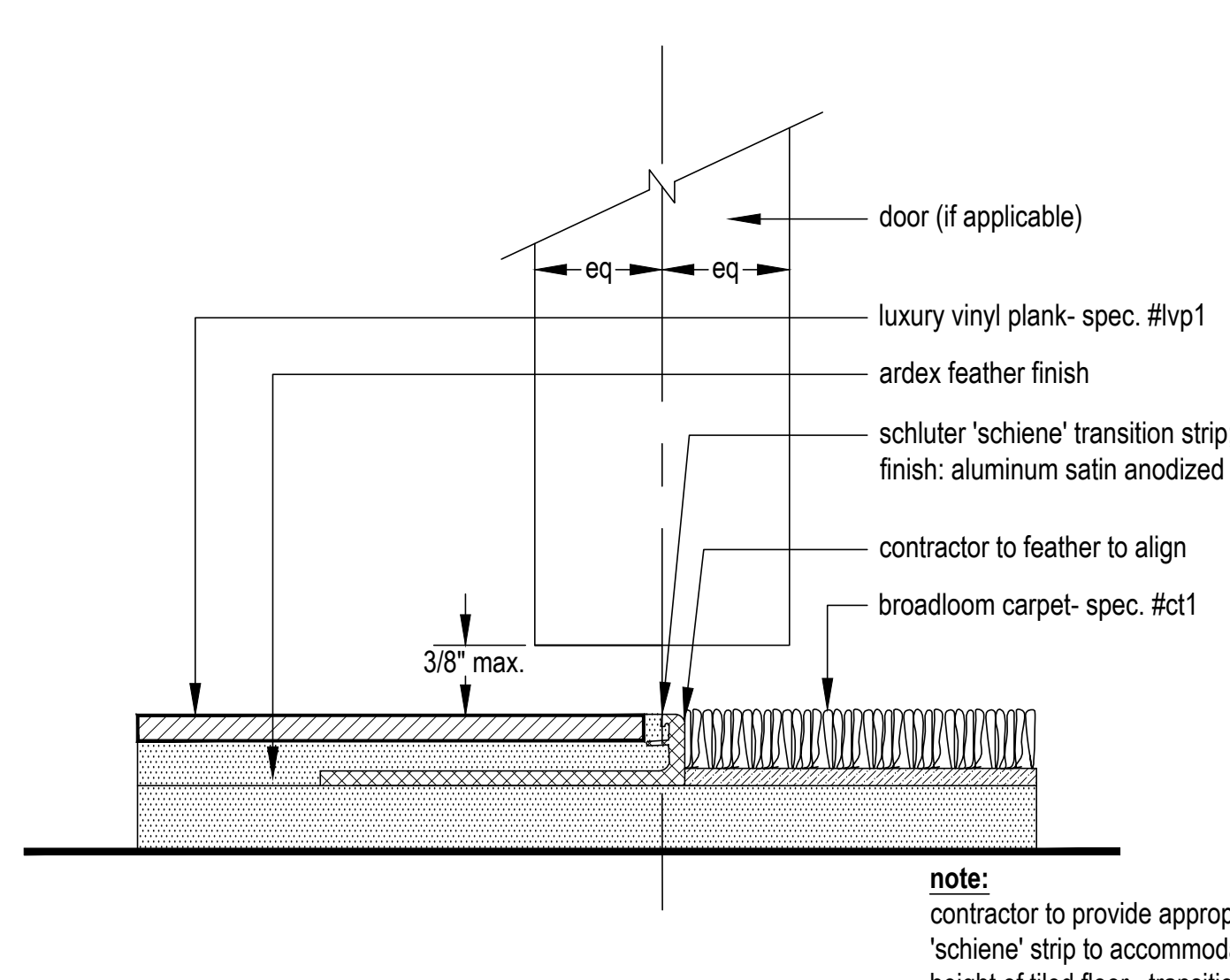
1 standard casework detail



2 rubber base/ luxury vinyl tile or vinyl plank detail

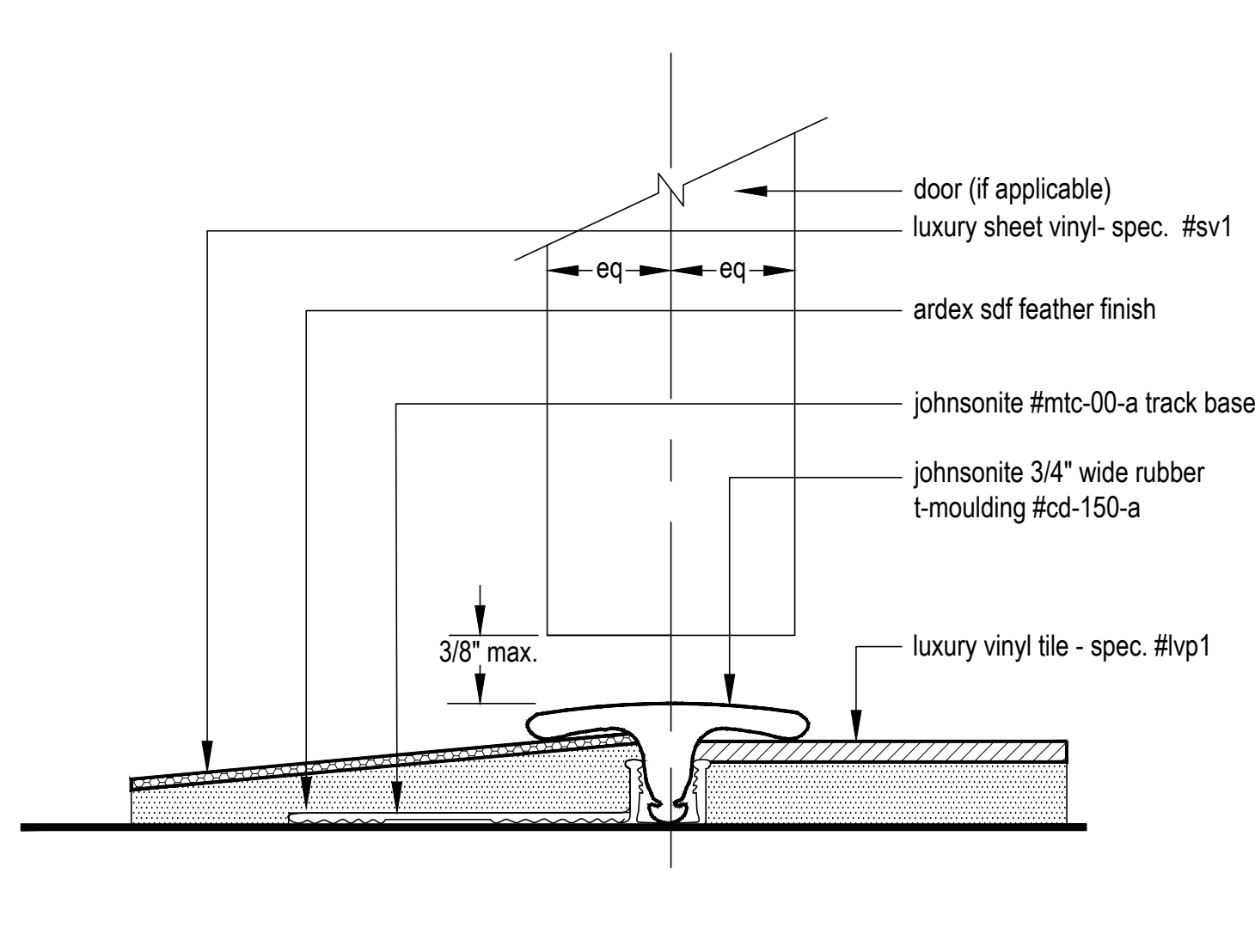


3 rubber base/ broadloom carpet

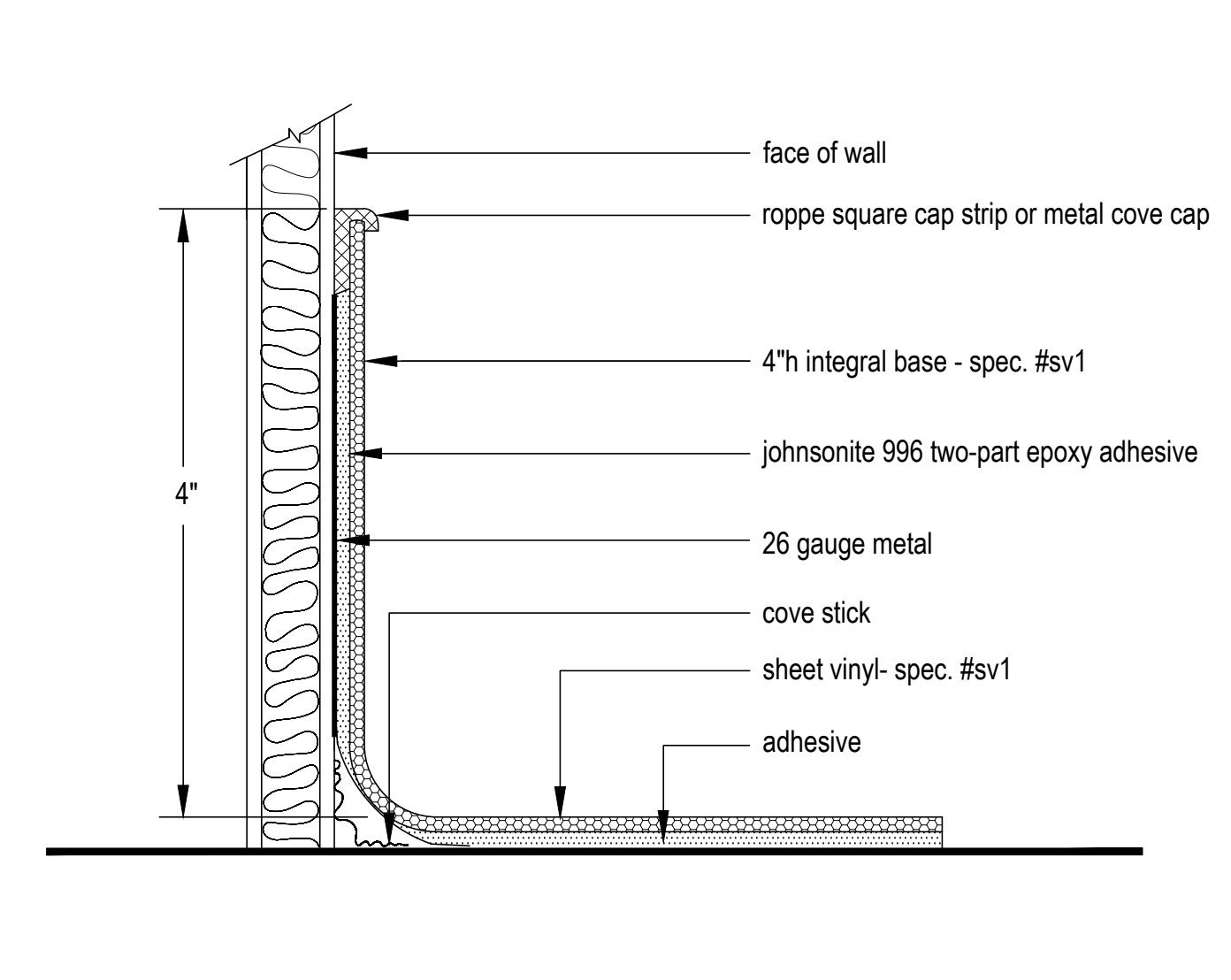


4 luxury vinyl plank/ broadloom carpet

note:
contractor to provide appropriate schluter 'schiene' strip to accommodate finished height of tiled floor. transition height not to exceed 1/2" and selected strip to comply with the "americans with disabilities act".



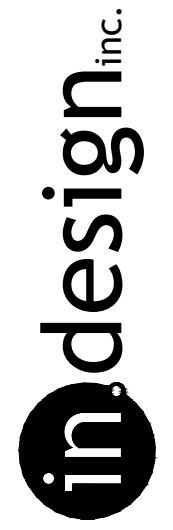
5 sheet vinyl/ luxury vinyl plank transition



6 integral cove base/ sheet vinyl transition

designer: j.l.s./ t.c.
drawn by: t.c.
date: 14 october 2016
revisions:

2080 n.w. boca raton blvd.
suite #3
boca raton, florida
3 3 4 3 1
tel: 561.620.8185
fax: 561.620.9535



IB# 0001265
c o m m e r c i a l i n t e r i o r d e s i g n

in • design, inc. copyright: plans, ideas and designs are not to be reproduced, changed or copied in any manner whatsoever; nor are they to be assigned to any third party, without first obtaining express written permission from in • design, inc.

activity center

florence fuller child development centers
standard details

#1190-16

boca raton, florida

id.3

scale: not to scale