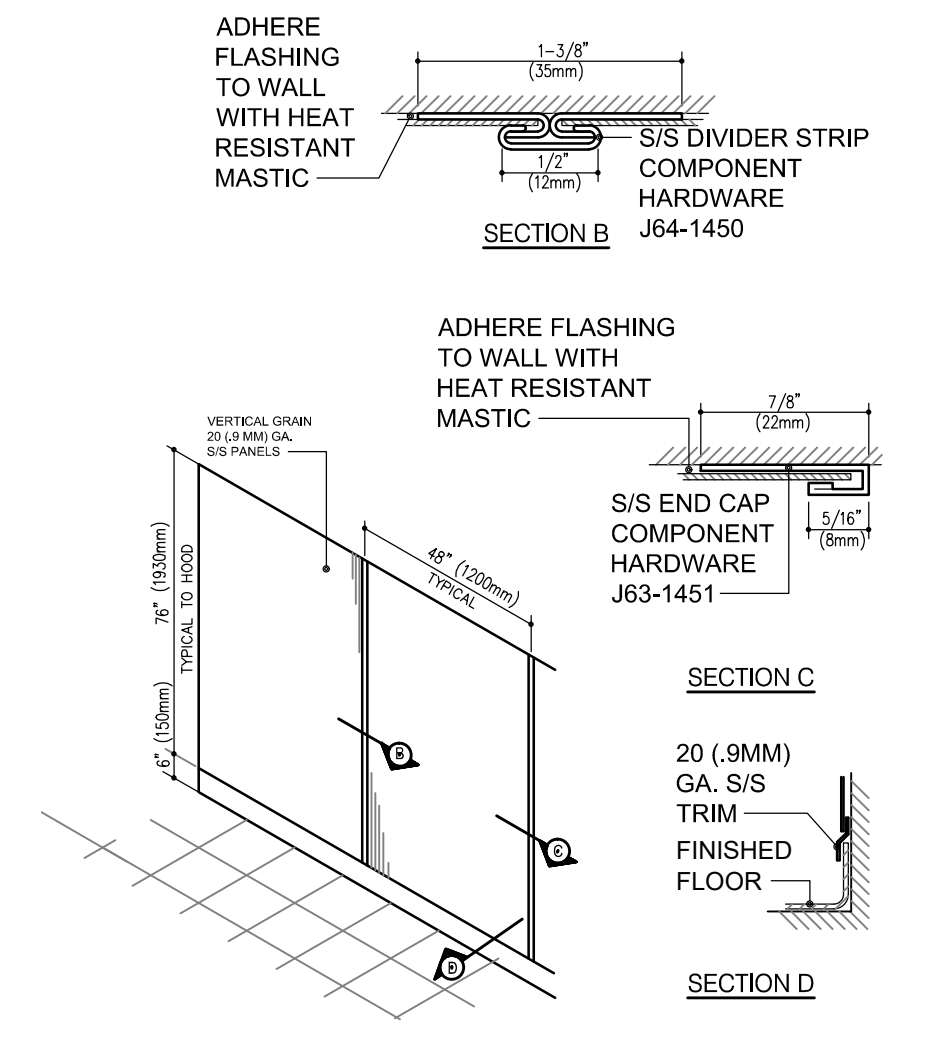
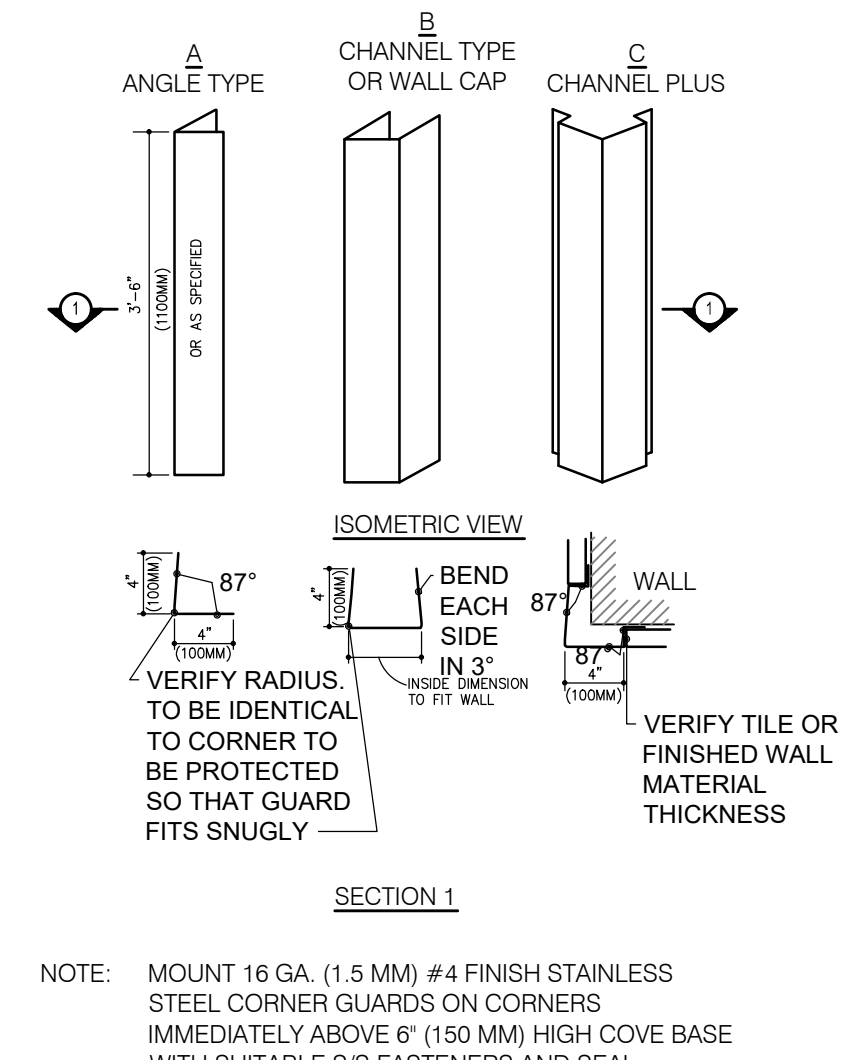


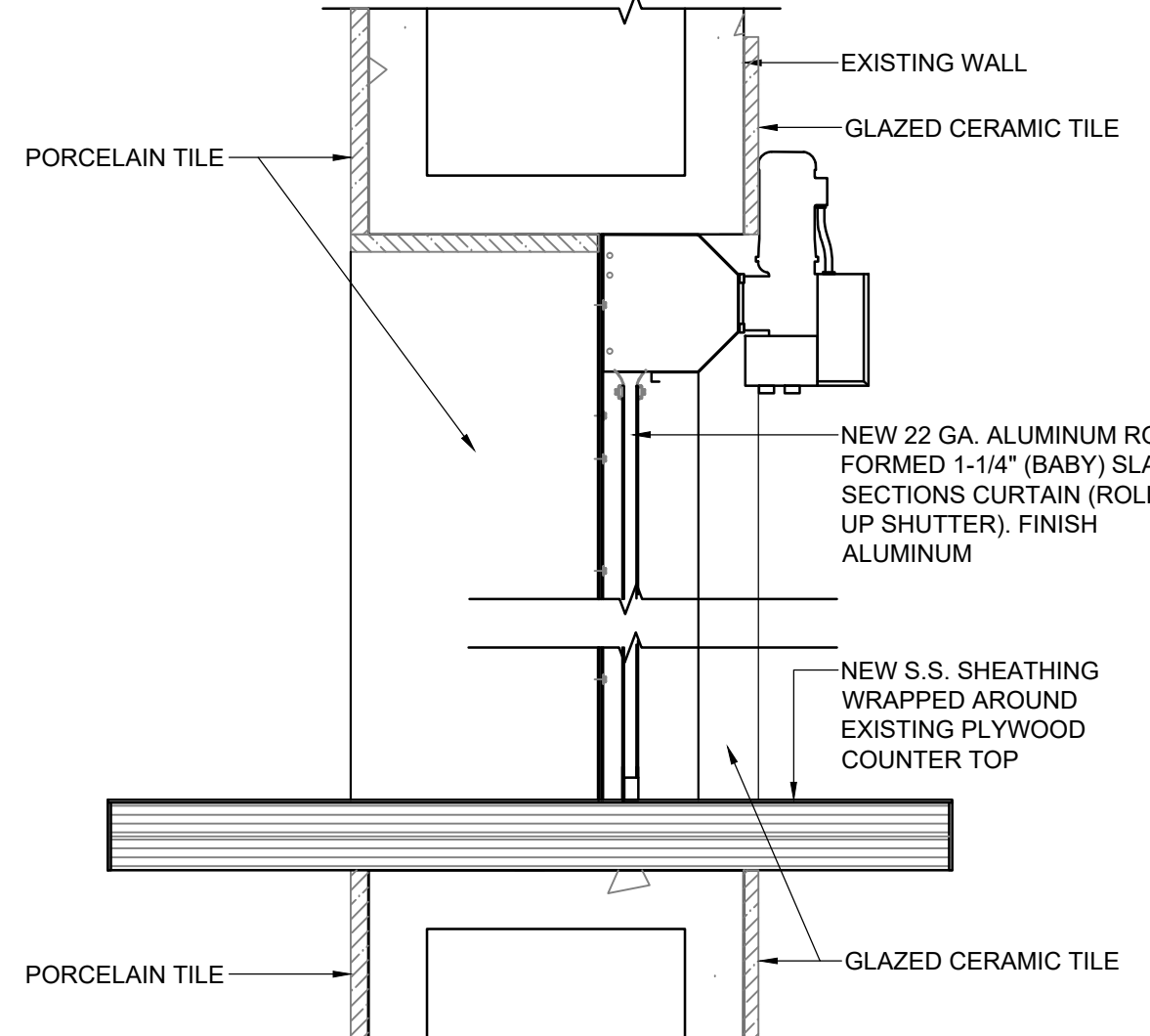
**W1 WALL TYPE**  
SCALE: 1 1/2" = 1'-0"



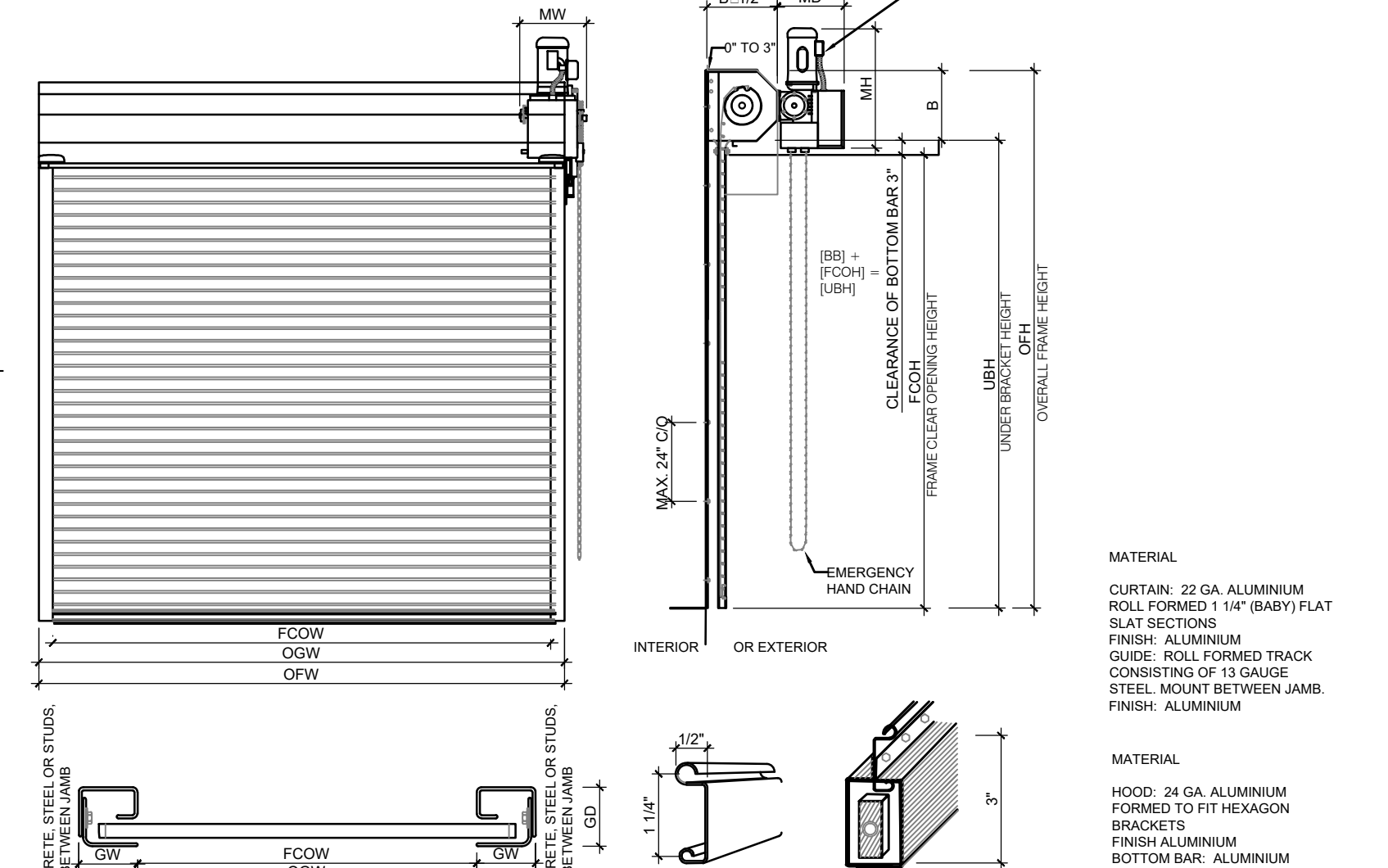
**1 S.S. WALL SHEATHING DETAIL**  
SCALE: = N.T.S.



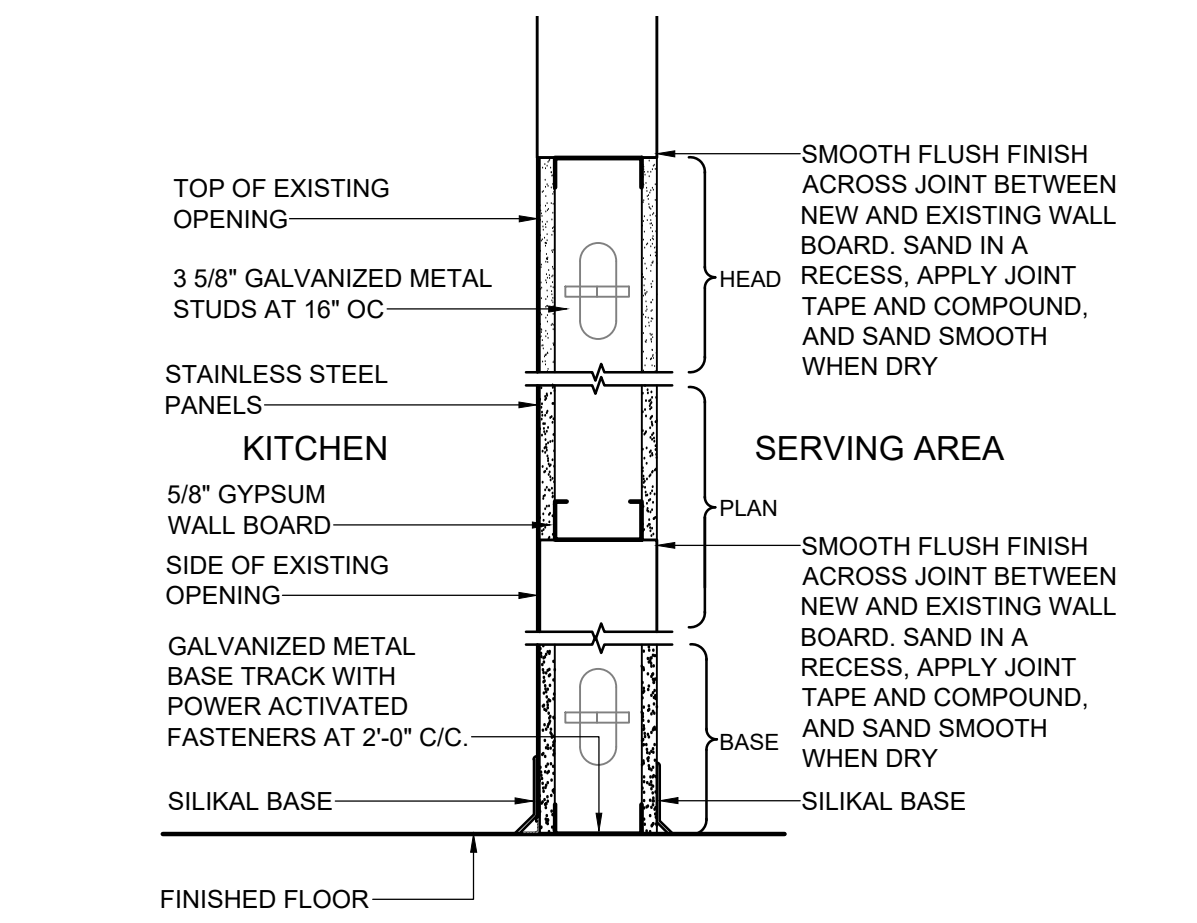
**2 CORNER GUARD DETAIL**  
SCALE: = N.T.S.



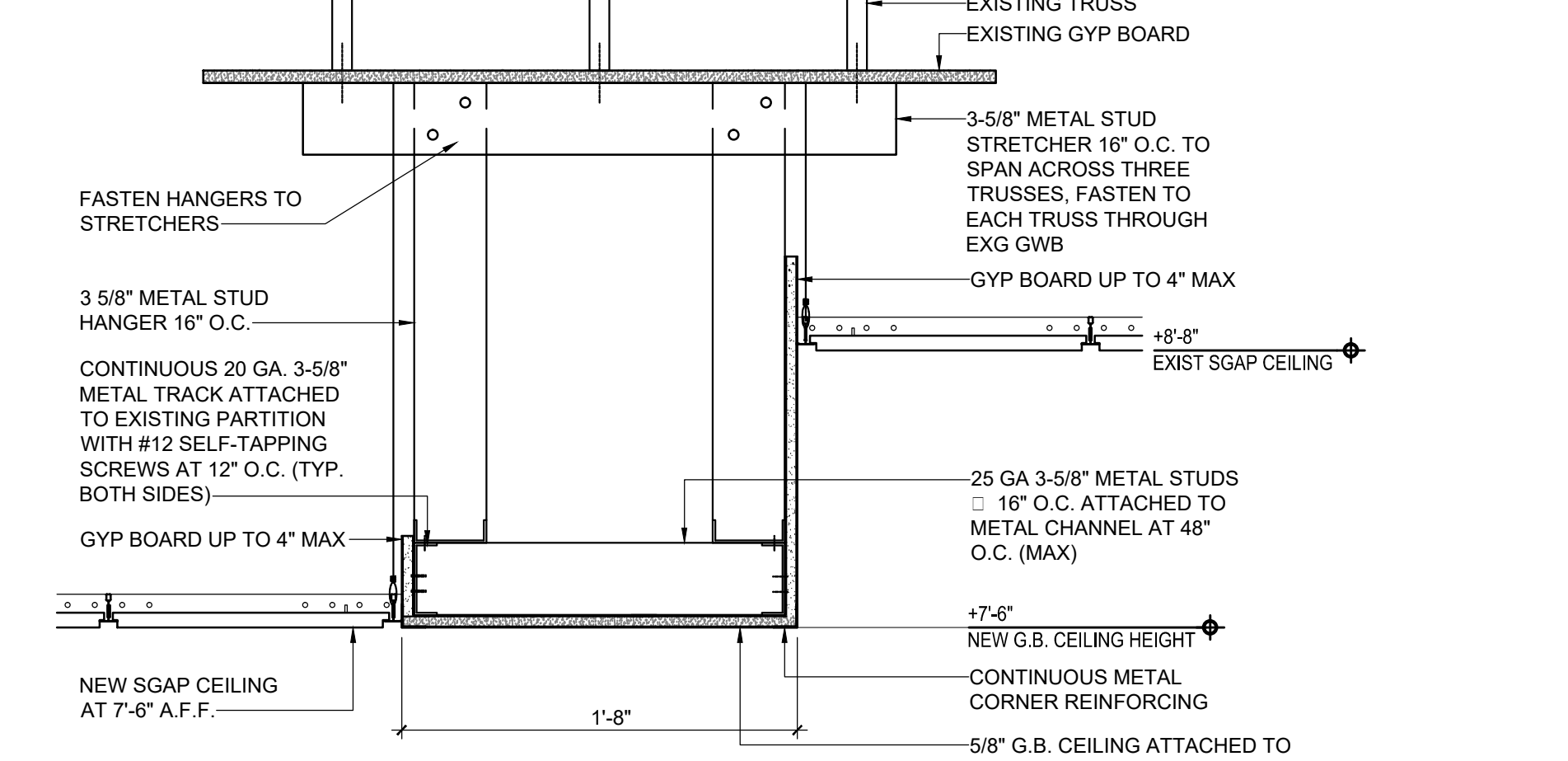
**3 WINDOW SILL/HEADER**  
SCALE: 3" = 1'-0"



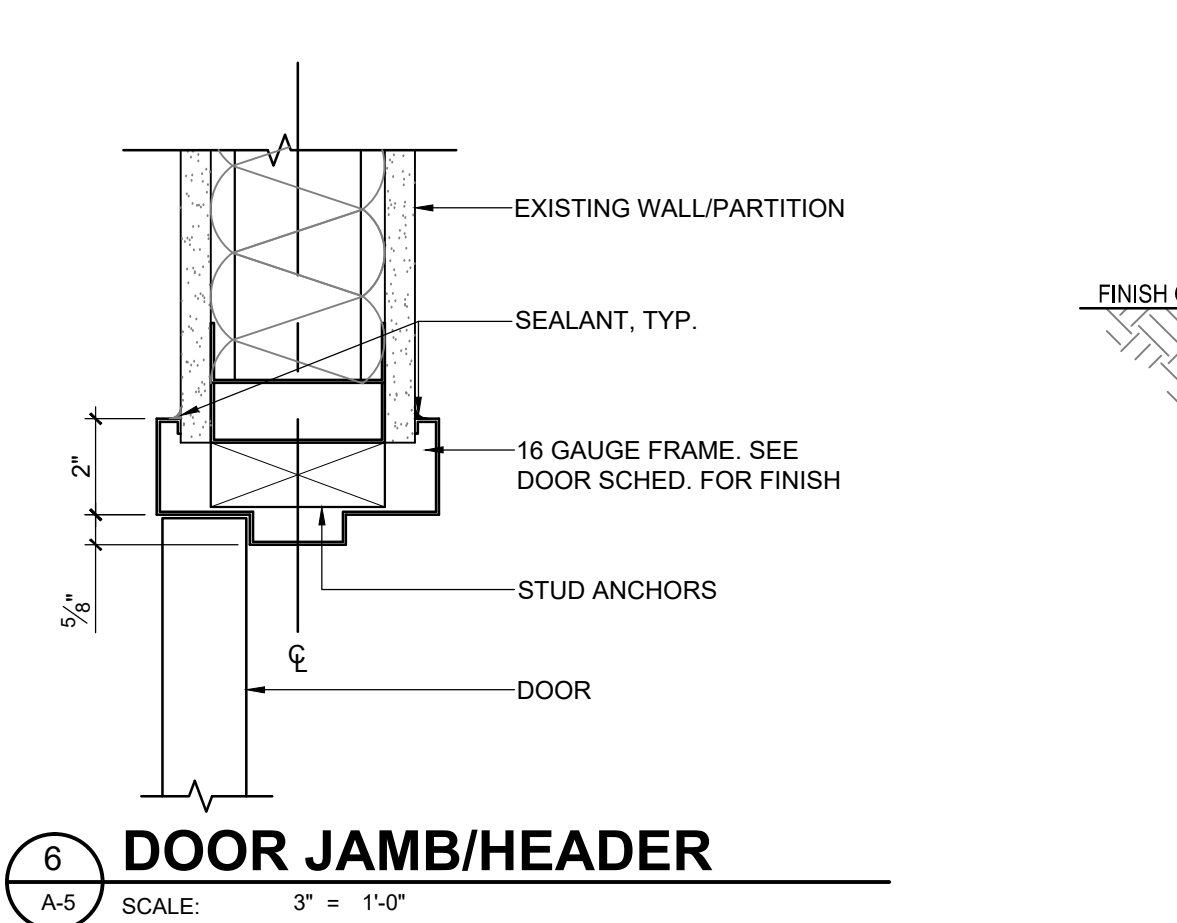
**4 ROLL-UP SHUTTER**  
SCALE: = N.T.S. (SEE WINDOW SCHEDULE FOR NOMINAL DIMENSIONS)



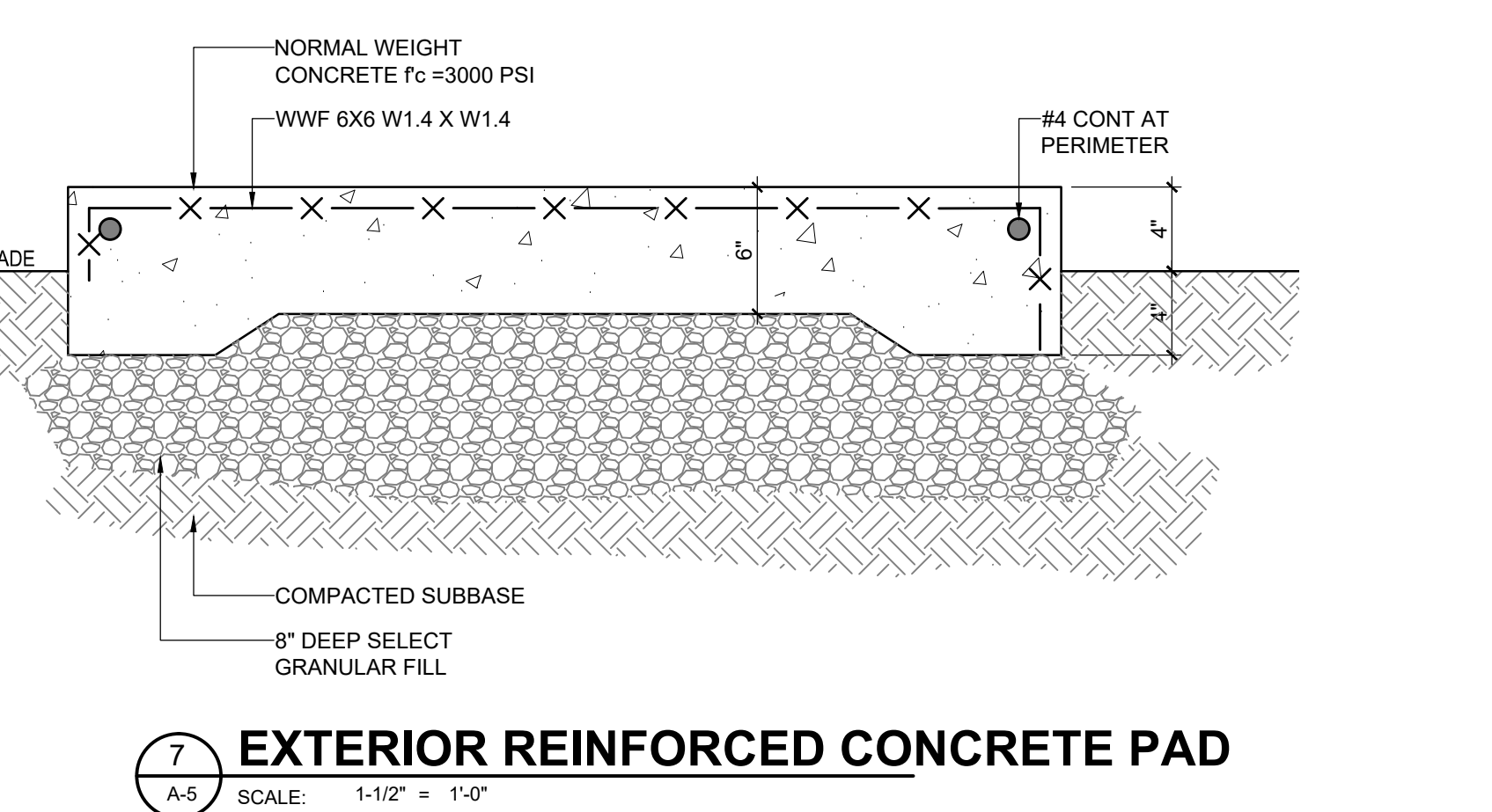
**W2 WALL TYPE**  
SCALE: 1 1/2" = 1'-0"



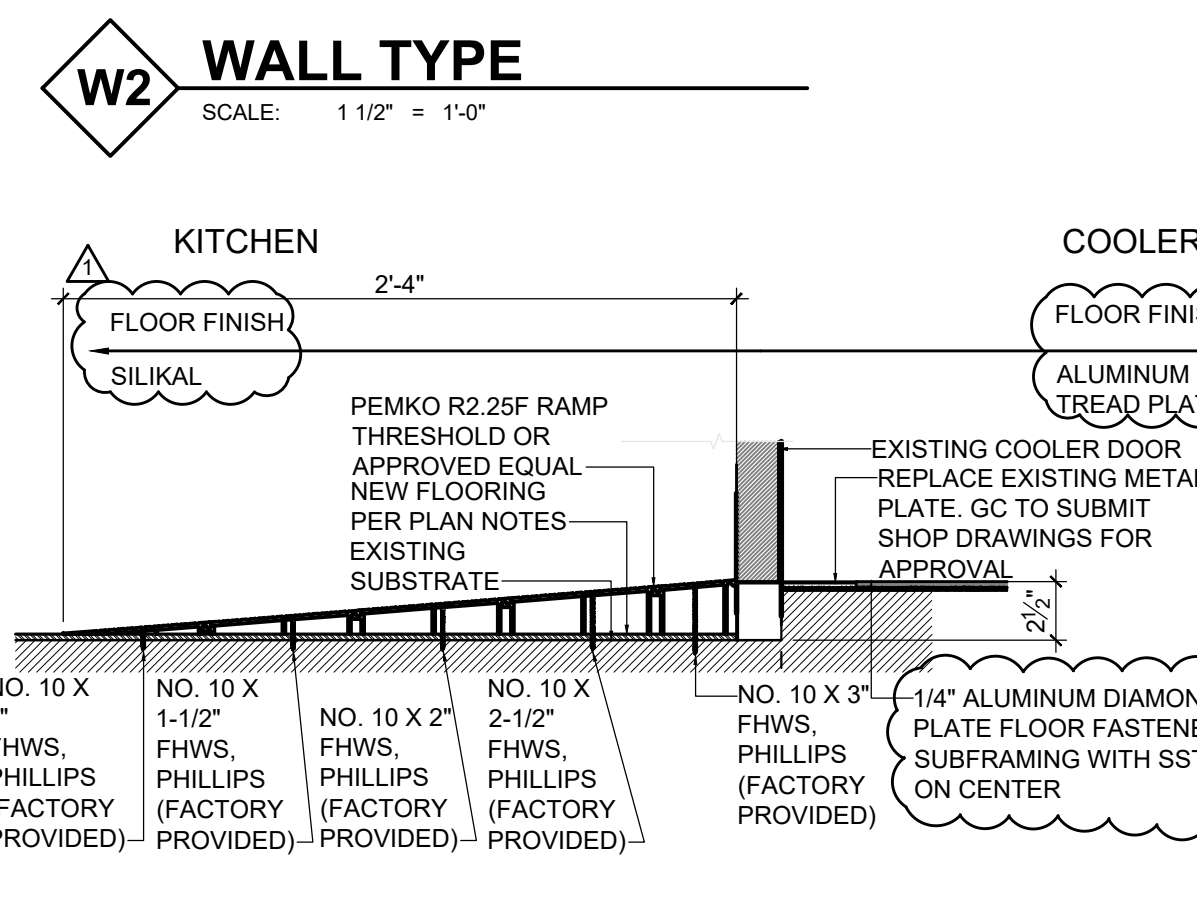
**5 SOFFIT DETAIL**  
SCALE: 1-1/2" = 1'-0"



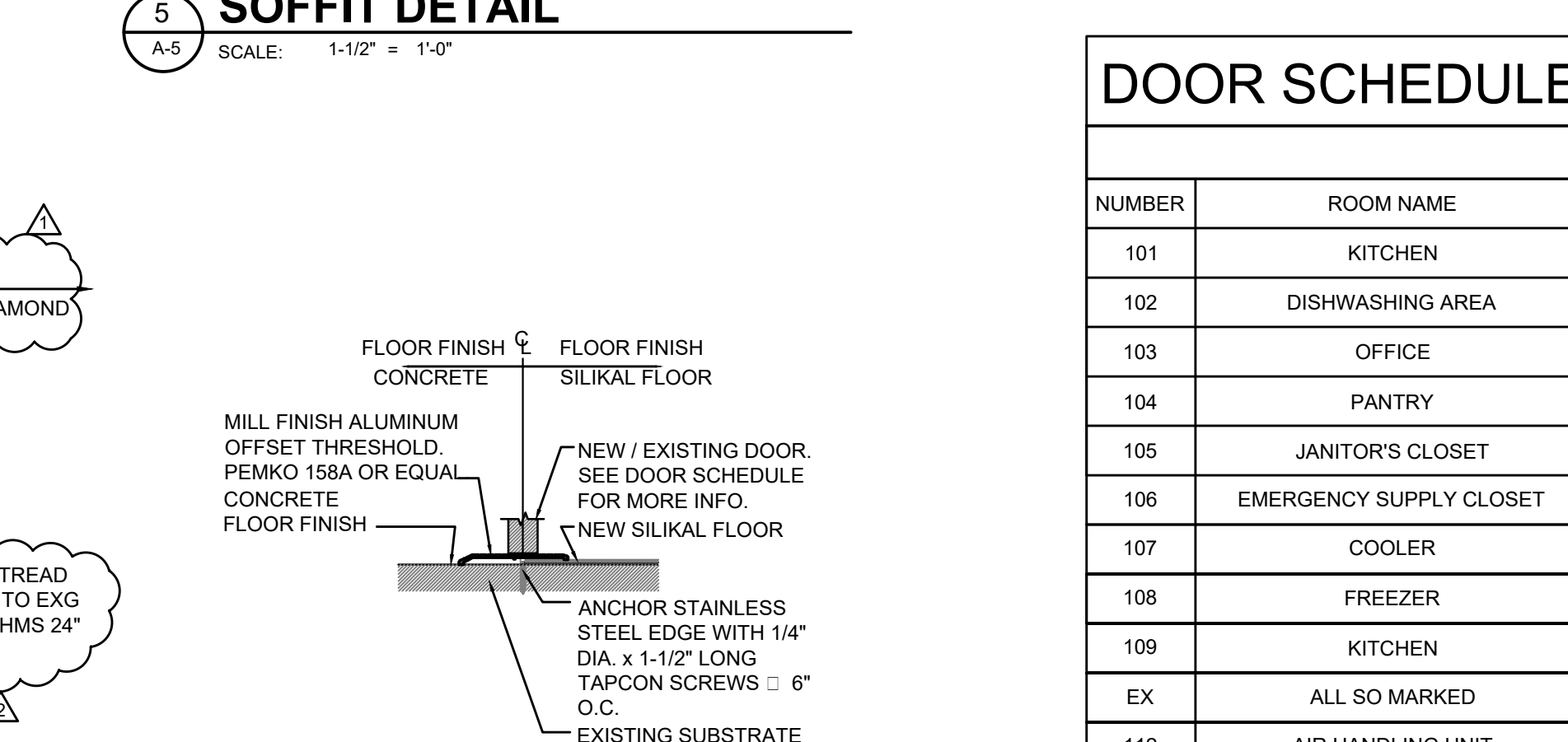
**6 DOOR JAMB/HEADER**  
SCALE: 3" = 1'-0"



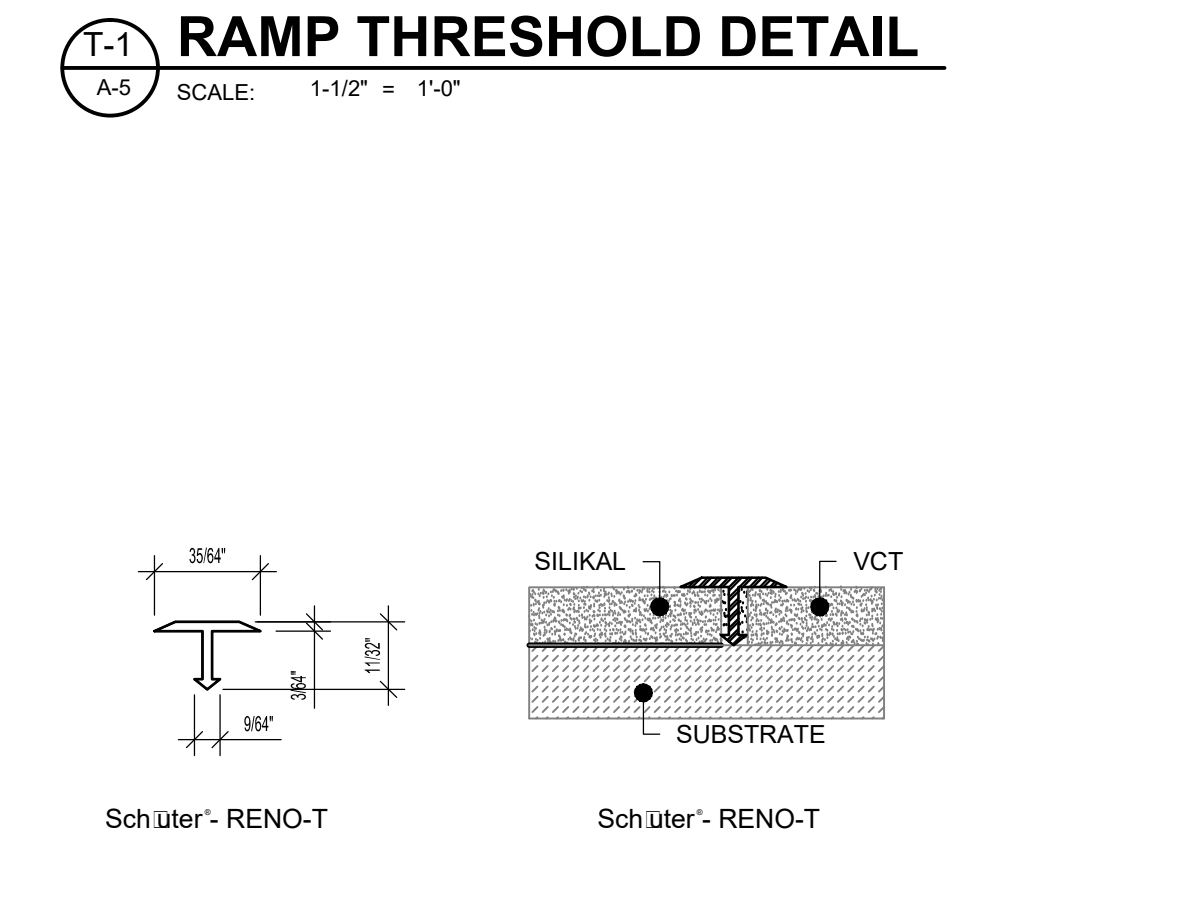
**7 EXTERIOR REINFORCED CONCRETE PAD**  
SCALE: 1-1/2" = 1'-0"



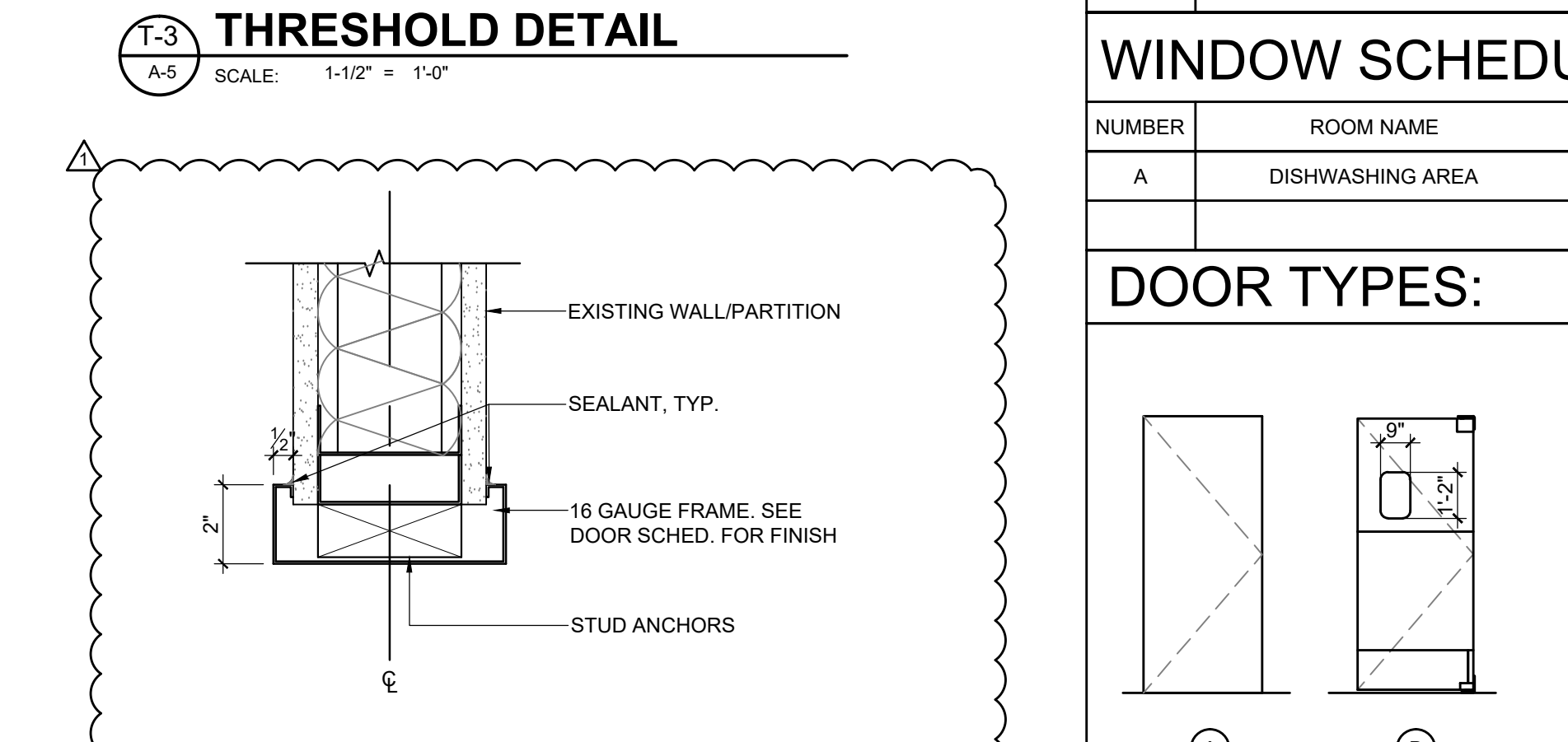
**T-1 RAMP THRESHOLD DETAIL**  
SCALE: 1-1/2" = 1'-0"



**T-3 THRESHOLD DETAIL**  
SCALE: 1-1/2" = 1'-0"



**T-2 TRANSITION STRIP DETAIL**  
SCALE: 1'-0" = 1'-0"



**8 CASED OPENING JAMB/HEADER**  
SCALE: 3" = 1'-0"

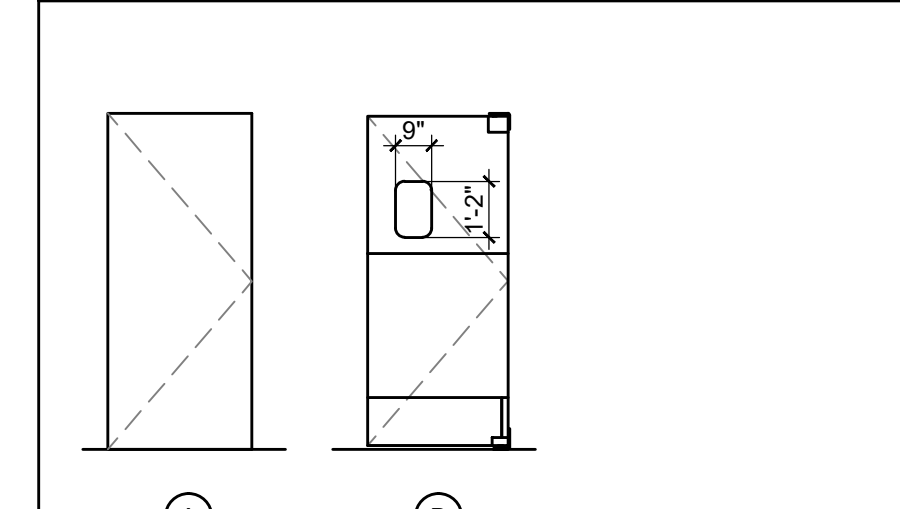
**DOOR SCHEDULE**

NUMBER	ROOM NAME	SIZE	DOOR				FRAME		DETAIL		HARDWARE		TRANSITION		REMARKS
			THICK	RATING	MAT.	FINISH	DOOR TYPE	FRAME MAT.	FRAME FINISH	FRAME TYPE	HEAD	JAMB	SET #	T-#	
101	KITCHEN	3'-0" X 7'-0"	0.875"	-	WD	ALUMINUM	B	HM	304 SS #4	2	6	6	PER DOOR MFR.	-	PROVIDE DOUBLE ACTING RESTAURANT DOOR SCP-5 BY ELIASON CORPORATION, OR APPROVED EQUAL
102	DISHWASHING AREA	5'-0" X 7'-0"	-	-	-	-	-	HM	304 SS #4	1	6	6	1	T-3	PROVIDE HOLLOW METAL FRAME AROUND CASED OPENING, 304 SS #4 (BRUSHED SATIN), OR APPROVED EQUAL
103	OFFICE	3'-0" X 7'-0"	1.34"	-	HM	PAINT P-5	A	HM	PAINT P-6	1	6	6	1	T-3	
104	PANTRY	3'-0" X 7'-0"	1.34"	-	HM	PAINT P-5	A	HM	PAINT P-6	1	6	6	1	T-3	
105	JANITOR'S CLOSET	3'-0" X 7'-0"	1.34"	-	HM	PAINT P-5	A	HM	PAINT P-6	1	6	6	1	-	
106	EMERGENCY SUPPLY CLOSET	3'-0" X 7'-0"	1.34"	-	HM	PAINT P-5	A	HM	PAINT P-6	1	6	6	1	T-3	
107	COOLER	EXISTING	-	-	-	PAINT P-5	-	-	PAINT P-6	-	-	-	-	-	PREP EXG METAL PANELS AND METAL DOORS FOR PAINTING
108	FREEZER	EXISTING	-	-	-	PAINT P-5	-	-	PAINT P-6	-	-	-	-	-	PREP EXG METAL PANELS AND METAL DOORS FOR PAINTING
109	KITCHEN	PR 3'-0" X 7'-0"	0.875"	-	WD	ALUMINUM	C	HM	304 SS #4	2	6	6	PER DOOR MFR.	-	PROVIDE DOUBLE ACTING RESTAURANT DOOR SCP-5 BY ELIASON CORPORATION, OR APPROVED EQUAL
EX	ALL SO MARKED	EXISTING	-	-	-	PAINT P-5	-	-	PAINT P-6	-	-	-	-	-	SANITARY PARTS AND SUPPLIES W/SC DOORS, SEE FINISH SCHEDULE
112	AIR HANDLING UNIT	3'-0" X 7'-0"	1.34"	-	HM	PAINT P-5	A	HM	PAINT P-6	1	6	6	1	-	

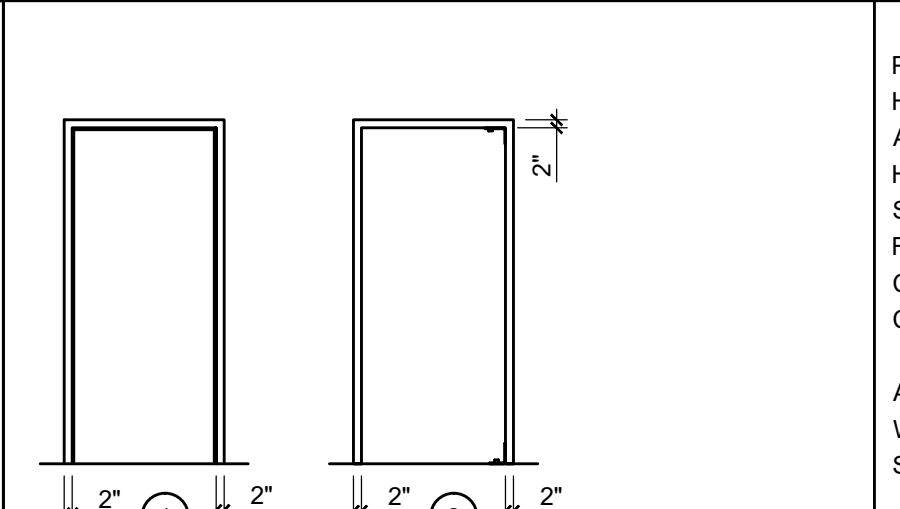
**WINDOW SCHEDULE**

NUMBER	ROOM NAME	SIZE	FRAME	FINISH	GLASS TYPE	THICK	HEAD	JAMB	SILL	REMARKS
A	DISHWASHING AREA	2'-6"W X 2'-9"H	ALUM.	PER MANUFACTURER	N/A		4/A-5	3/A-5	4/A-5	COUNTER ROLL-UP SHUTTER WITH LOCK, BY ALPINE DOORS AND WINDOWS, INC., OR APPROVED EQUAL. OPERATED BY MOTOR ON THE RIGHT HAND SIDE.

**DOOR TYPES:**



**FRAME TYPES:**



**ABBREVIATIONS**

PT	PAINT	BB1191 4.5 X 4.5 NRP	630	HAG
HM	HOLLOW METAL	WS407CVY	626	IVES
ALUM	ALUMINUM	8205 LNJ	260	SAR
HAG	HAGER	8400 32D 12X34 (32MCR9)	US32D	IVES
SAR	SARGENT			
FIN	FINISH			
CL	CLEAR GLASS			
CLT	CLEAR TEMPERED GLASS			
ANOD	CLEAR ANODIZED WOOD			
WD	WOOD			
SS	STAINLESS STEEL			
PR	PAIR			

**HARDWARE SET 1:**

3 EA	HINGES	BB1191 4.5 X 4.5 NRP	630	HAG
1 EA	WALL STOP	WS407CVY	626	IVES
1 EA	OFFICE LOCKSET	8205 LNJ	260	SAR
1 EA	S.S. KICK PLATE	8400 32D 12X34 (32MCR9)	US32D	IVES

**DOOR & WINDOW NOTES:**

- SIZES GIVEN ARE NOMINAL OPENINGS. GC SHALL FIELD VERIFY ALL DIMENSIONS PRIOR TO FABRICATION, AND COORDINATE OPENINGS WITH DOOR & WINDOW MANUFACTURER'S SPECIFICATIONS AND OPENING DIMENSIONS.
- DOOR HARDWARE (HANDLES, PULLS, LATCHES & LOCKS) SHALL COMPLY WITH 11.4.13.9 OF THE FLORIDA BUILDING CODE. ALL DOOR HARDWARE SHALL COMPLY WITH THE REQUIREMENTS OF FBC11-4.13
- ALL FIRE-RATED DOORS MUST HAVE BALL-BEARING HINGES AND CLOSERS.
- ALL DOORS WILL COMPLY WITH NFPA 101 CHAPTER 7.2.1.5.2
- ALL LEVER HANDLES TO BE BRUSHED STAINLESS STEEL FINISH.
- PROVIDE SELF-RELEASING LOCKING DEVICES ON ALL EXIT DOORS.

**SINGER ARCHITECTS**  
1700 BLOUNT ROAD, POMPANO BEACH, FL 33069  
PH: 954.387.1318 | FAX: 954.387.1319  
WWW.SINGERARCHITECTS.COM

**PROJECT:** NORTH HOMELESS ASSISTANCE CENTER KITCHEN RENOVATION

**REVISIONS:**

NO.	DESCRIPTION	DATE	BY
1	BLDG DEPT COMMENTS	03/23/2016	ZL
2	CMD COMMENTS	06/21/2016	ZL

**STAMP:** NOT FOR CONSTRUCTION  
ISSUED FOR PERMIT RESUBMITTAL  
DATE: 10/10/2016

**SHEET TITLE:** DETAILS AND SCHEDULES WALL TYPES  
**SHEET NUMBER:** A-5