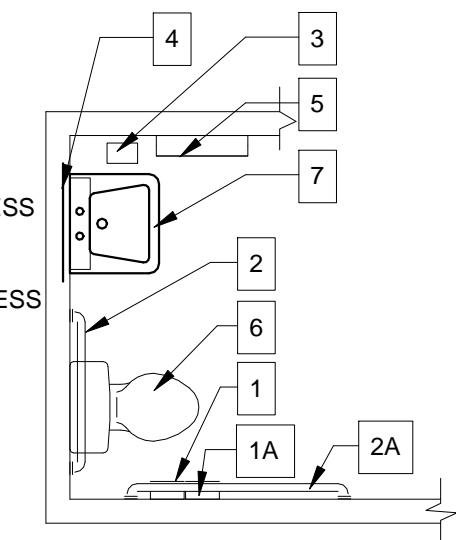
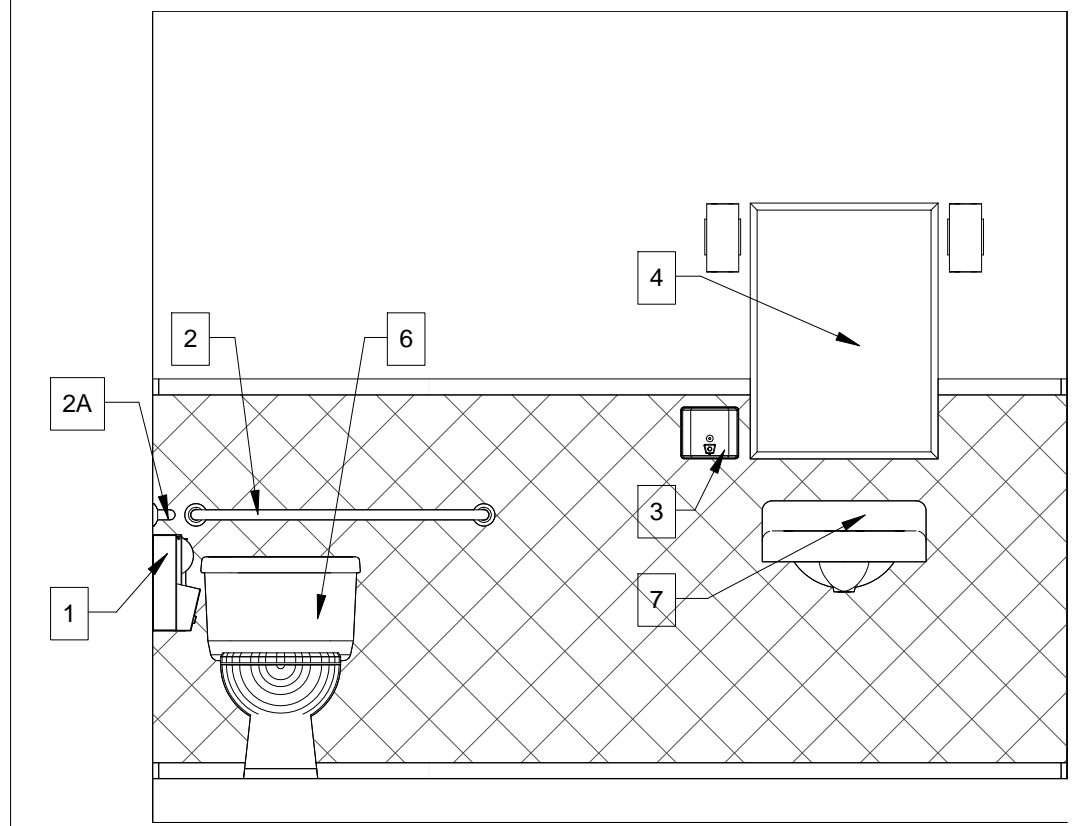
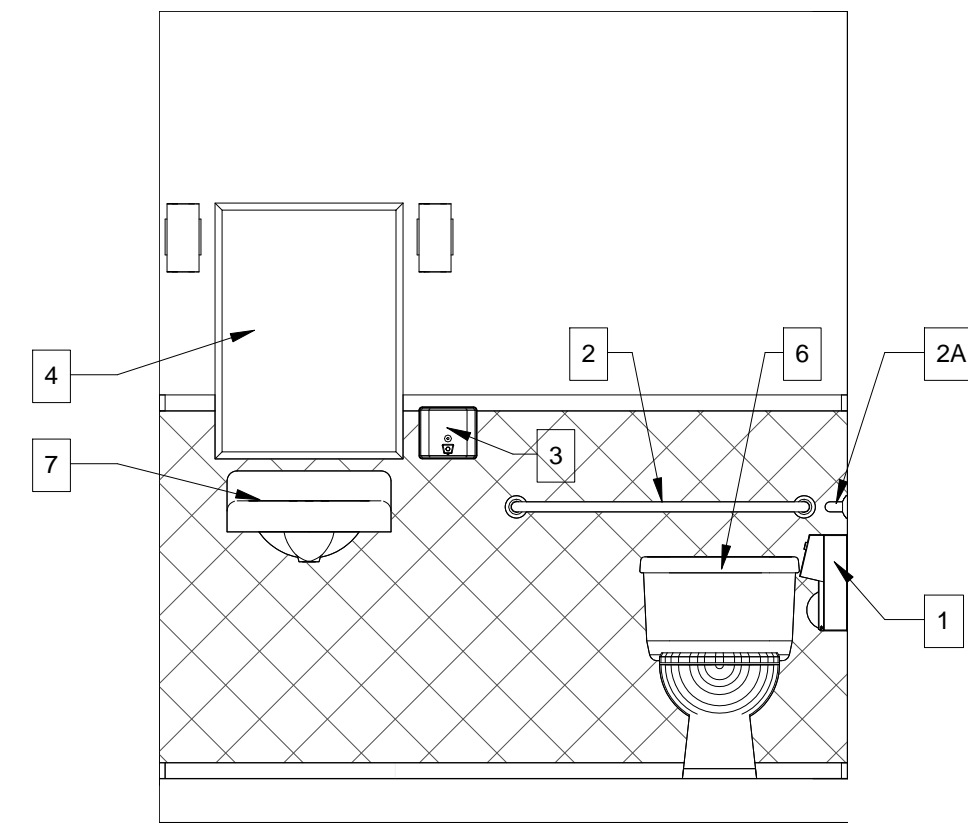


TYPICAL ACCESSIBLE RESTROOM FIXTURES AND ACCESSORIES

- 1 BOBRICK B-2888 OR EQUAL SURFACE MOUNTED MULTI-ROLL TOILET TISSUE DISPENSER @ 21" A.F.F.
- 1A BOBRICK OR EQUAL SANITARY NAPKIN DISPOSAL @ 21" A.F.F. (WOMEN'S ROOM ONLY)
- 2 BOBRICK B-6906x36 OR EQUAL 1-1/2" Ø 36" L STAINLESS STEEL GRAB BARS W/ CONCEALED MOUNTINGS.
- 2A BOBRICK B-6806x42 OR EQUAL 1-1/2" Ø 42" L STAINLESS STEEL GRAB BARS W/ CONCEALED MOUNTINGS.
- 3 BOBRICK B-4112 OR EQUAL SURFACE MOUNTED SOAP DISPENSER.
- 4 MIRROR
- 5 BOBRICK B-3942 OR EQUAL SEMI RECESSED PAPER TOWEL DISPENSER AND WASTE RECEPTACLE.
- 6 H.C. WATER CLOSET. FLUSH CONTROLS SHALL BE HAND OPERATED OR AUTOMATIC AND SHALL COMPLY WITH LOCAL STATE AND FEDERAL REQUIREMENTS. CONTROLS FOR FLUSH VALVES SHALL BE MOUNTED ON THE WIDE SIDE OF TOILET AREAS NO MORE THAN 44 INCHES (1120 MM) ABOVE THE FLOOR
- 7 H.C. LAVATORY AND FAUCET
NOTE: ACCESSIBLE KNEE SPACE HOT WATER AND DRAIN PIPES EXPOSED UNDER THE SINKS SHALL BE INSULATED OR OTHERWISE CONFIGURED AS TO PROTECT AGAINST CONTACT. THERE SHALL BE NO SHARP OR ABRASIVE SURFACES UNDER SINKS IN COMPLIANCE WITH LOCAL, STATE AND FEDERAL CODES

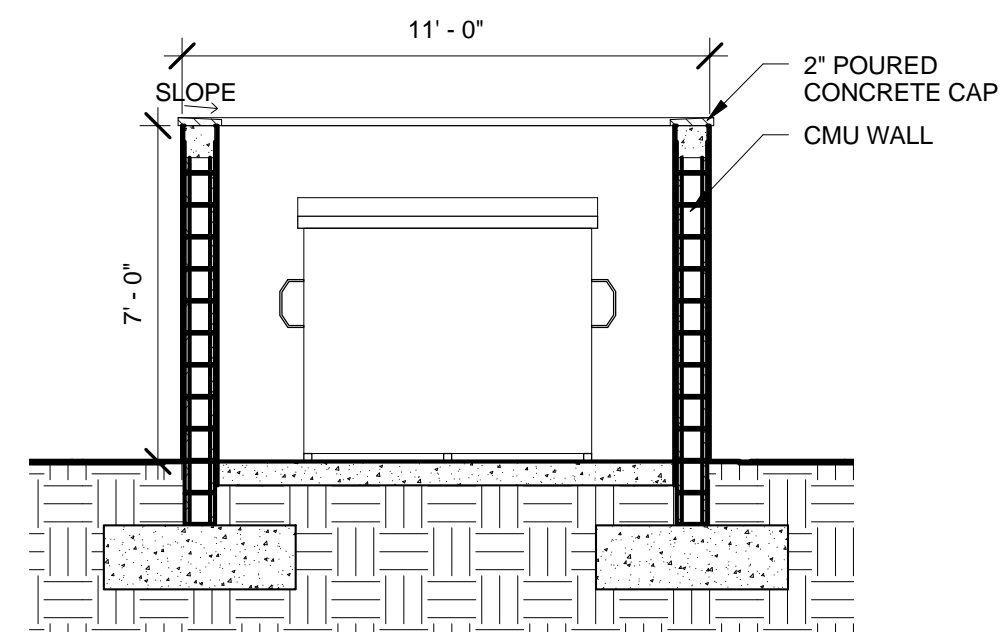


MAY NOT REFLECT ACTUAL ORIENTATION/SIZE OF RESTROOM. SEE CONSTRUCTION PLANS.



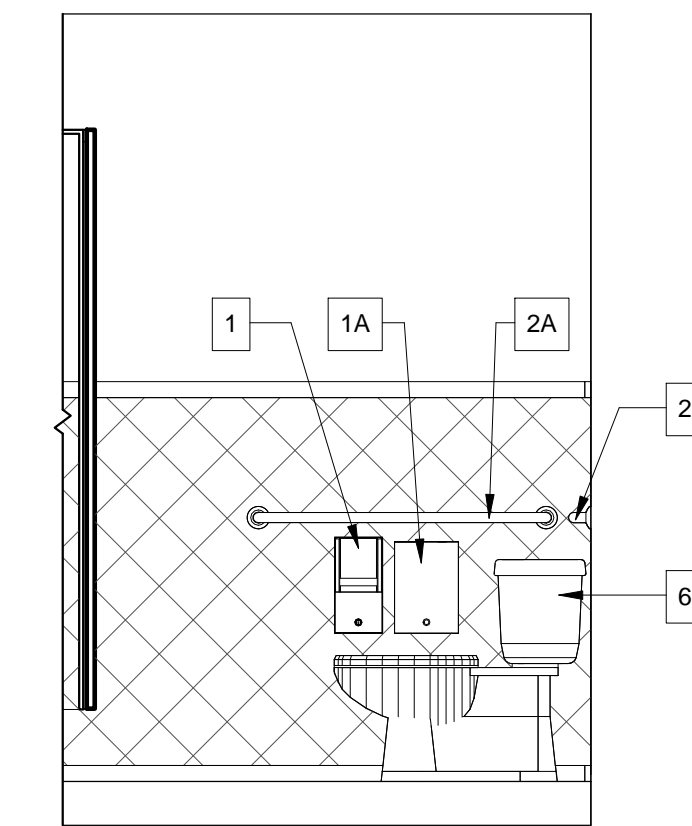
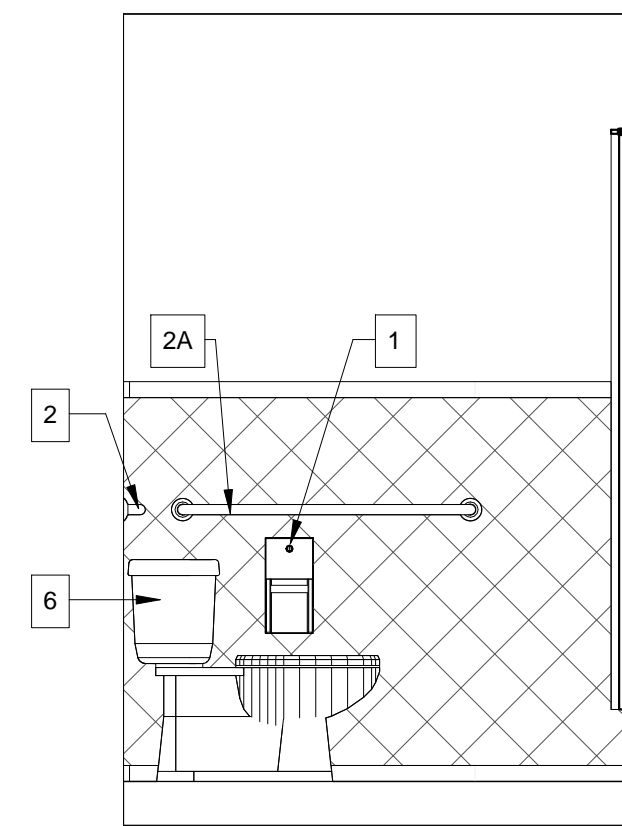
5 MEN'S RESTROOM ELEVATION
SCALE: 1/2" = 1'-0"

3 WOMEN'S RESTROOM ELEVATION
SCALE: 1/2" = 1'-0"



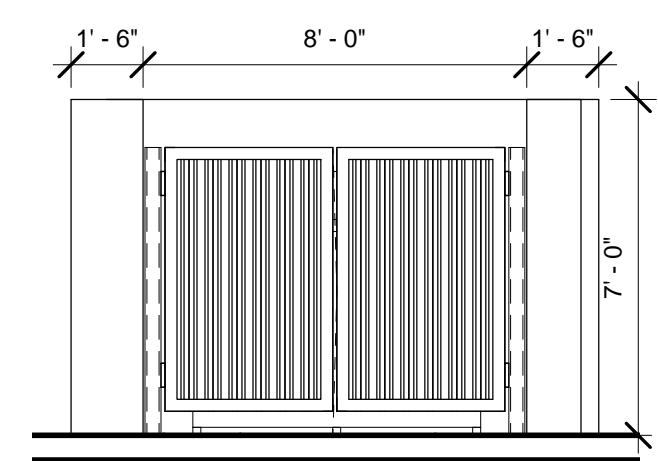
REFER TO STRUCTURAL DRAWINGS

8 DUMPSTER SECTION
SCALE: 1/4" = 1'-0"



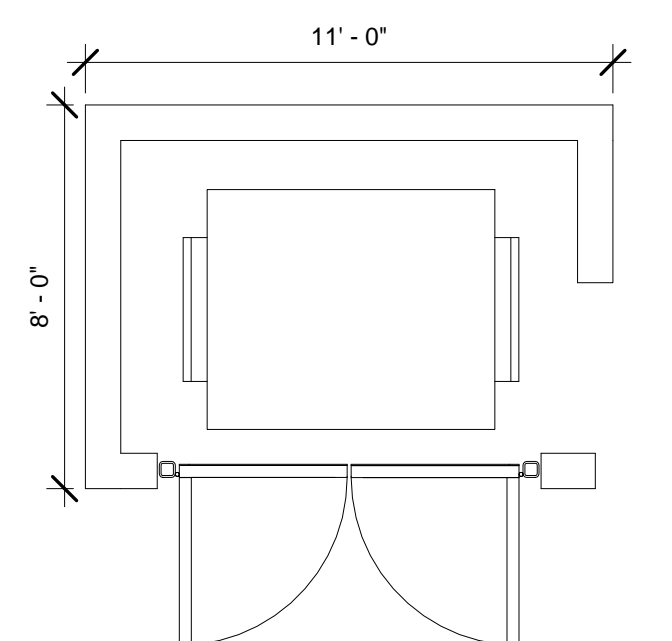
4 MEN'S RESTROOM ELEVATION
SCALE: 1/2" = 1'-0"

2 WOMEN'S RESTROOM ELEVATION
SCALE: 1/2" = 1'-0"



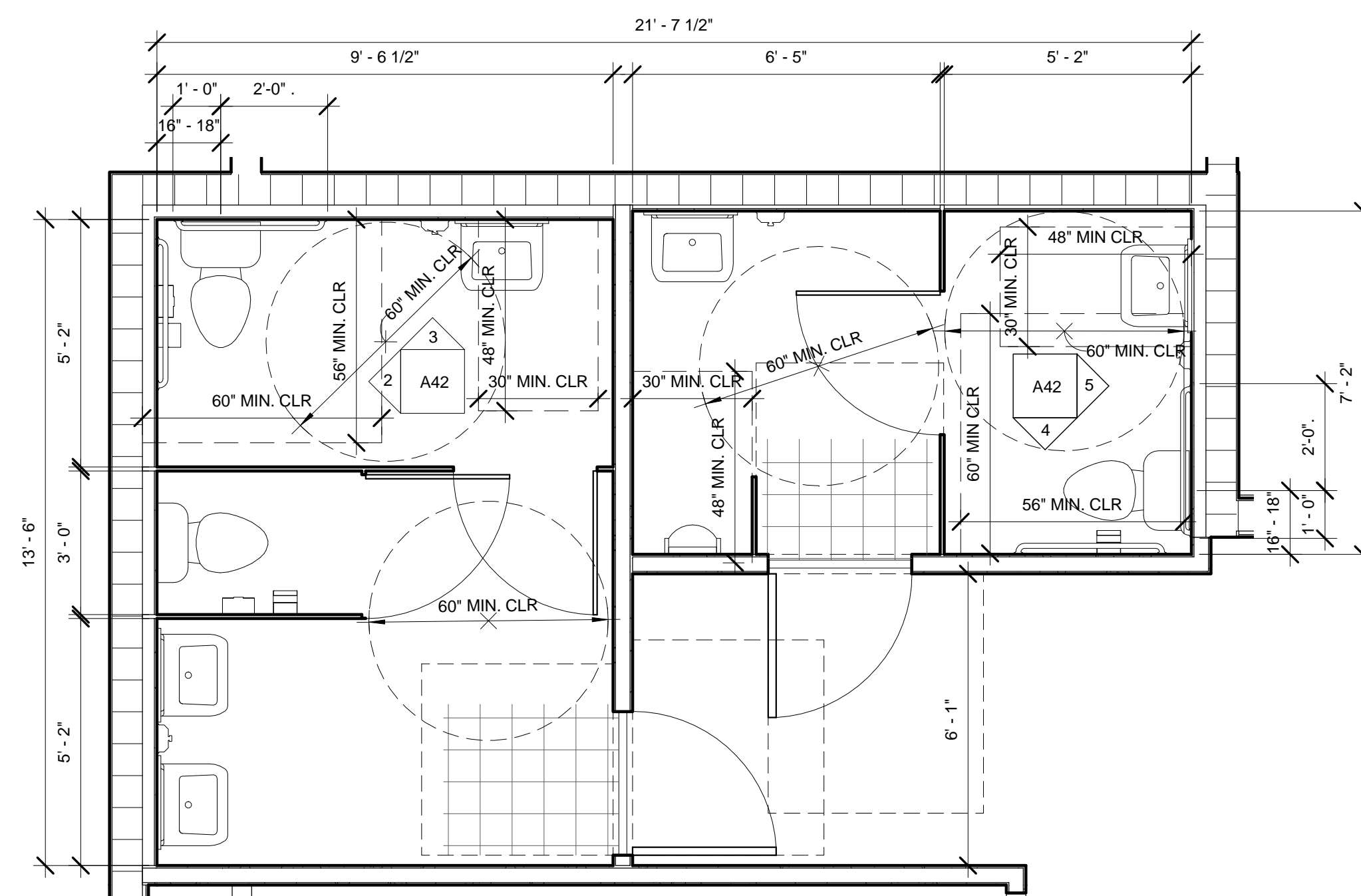
REFER TO STRUCTURAL DRAWINGS

7 DUMPSTER ELEVATION
SCALE: 1/4" = 1'-0"



REFER TO STRUCTURAL DRAWINGS

6 DUMPSTER ENLARGED PLAN
SCALE: 1/4" = 1'-0"



1 RESTROOM ENLARGED PLAN
SCALE: 3/8" = 1'-0"