

NORTH HOMELESS ASSISTANCE CENTER KITCHEN RENOVATION

1700 BLOUNT ROAD
POMPANO BEACH, FLORIDA

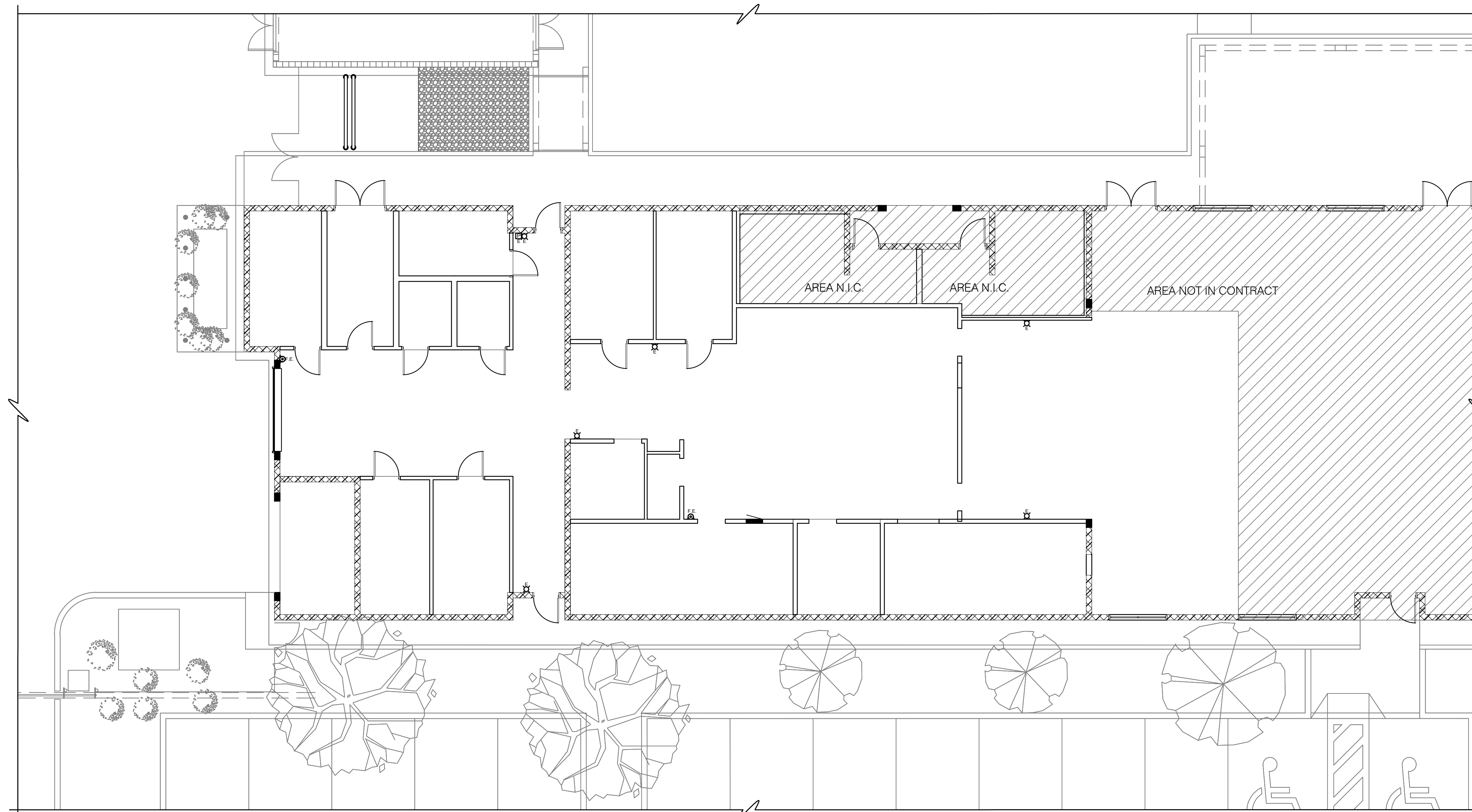


BROWARD COUNTY ADMINISTRATOR

BERTHA HENRY

BOARD OF COUNTY COMMISSIONERS

MARTIN DAVID KIAR, MAYOR
BARBARA SHARIEF, VICE MAYOR
MARK D. BOGEN
STACY RITTER
CHIP LAMARCA
LOIS WEXLER
BEAM FURR
TIM RYAN
DALE V.C. HOLNESS



1 AREA OF WORK
A-1 SCALE: 1/8" = 1'-0"

DELTA G CONSULTING ENGINEERS, INC.
707 N.E. 3rd AVE., SUITE 200
FORT LAUDERDALE, FL 33304
(954) 527-1112
CA#00009181

GEORGE SANJUAN, P.E.
FLORIDA LICENSE #46100
DATE: 09/18/2015

PJT. MGR: STEPHEN BENDER, PE
PROJECT #:

Cini-Little
CINI-LITTLE INTERNATIONAL, INC.
3405 N.W. 9th AVENUE, SUITE 1202
FT. LAUDERDALE, FL 33309-5943 USA
954-846-9600 OFFICE
954-564-1065 FAX
www.cinilittle.com

OFFICE LOCATIONS
CHICAGO CLEVELAND TORONTO
FT. LAUDERDALE WASHINGTON
LOS ANGELES LONDON
NEW YORK SYDNEY
SAN FRANCISCO TOKYO

California Professional Building
915 Middle River Drive Suite 521
Fort Lauderdale, Florida 33304
Phone (954) 537-9136 • Fax (954) 537-9137
License C000869 • www.singerarchitects.com

SINGER ARCHITECTS
A RUSSELL AND DAWSON COMPANY

© 2016 by Russell and Dawson FL Inc.

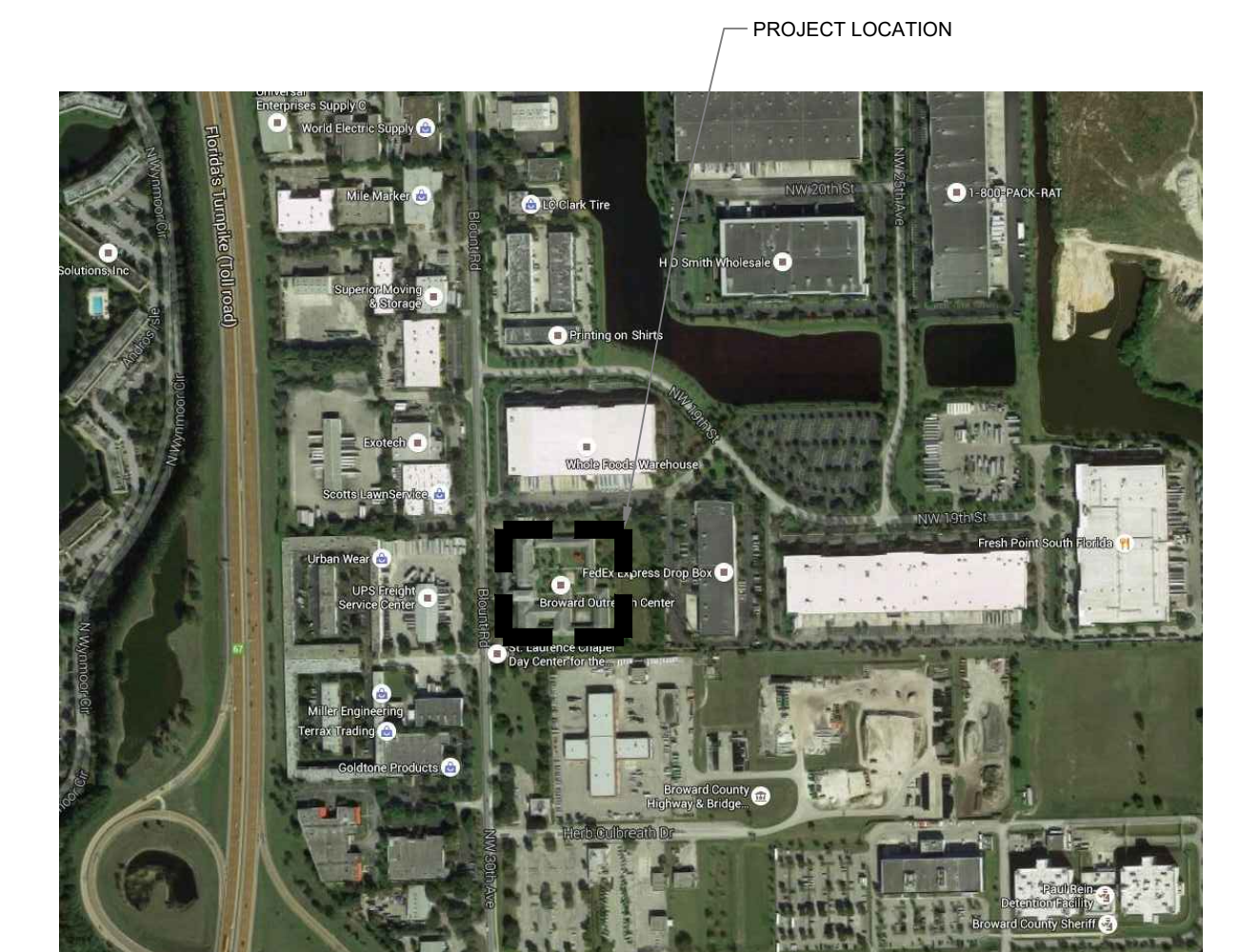
1111 MAIN STREET
EAST HARTFORD CT 06108

(860) 289-1100
info@rdaep.com

915 MIDDLE RIVER DRIVE SUITE 521, FORT LAUDERDALE FL 33304 (954) 537-9136

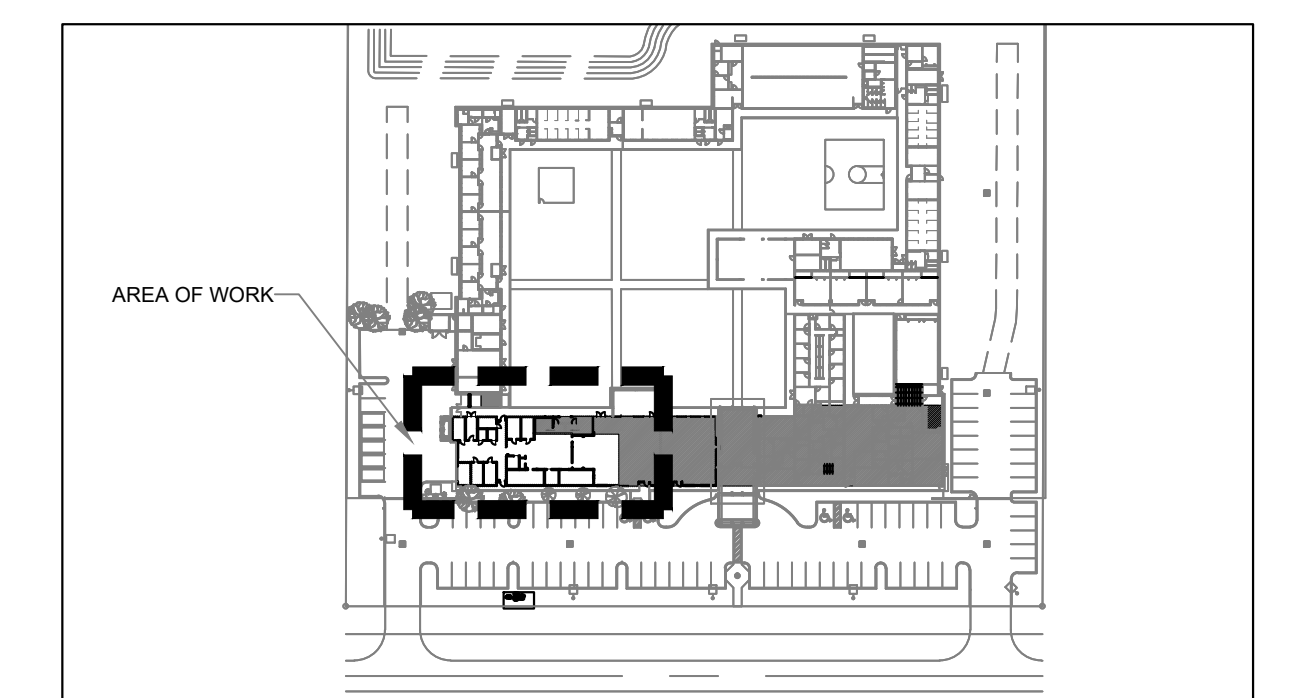
CELEBRATING 50 YEARS 1964-2014

TO THE BEST OF MY KNOWLEDGE THESE DRAWINGS AND THE PROJECT MANUAL ARE COMPLETE, AND COMPLY WITH THE BROWARD EDITION OF THE FLORIDA BUILDING CODE 5TH EDITION (2014).



LOCATION MAP

SCALE: = N.T.S.



KEY PLAN

SCALE: = N.T.S.

NOT FOR CONSTRUCTION
FOR
PERMIT RESUBMITTAL
DATE: 10/10/2016

FILE NO. 15012
DATE: 01/15/2016
REVISD TO: 10/10/2016