

**LCA** AA 003432  
 Architecture, Inc.  
 1975 Sansbury's Way  
 Suite 108  
 West Palm Beach, FL 33411  
 Phone: (561) 493-4787  
 Fax: (561) 493-4786

REVISIONS / DATE

**Interior Improvement for  
 Your Eye Specialists**  
 550 Heritage Dr. Suite 105  
 Jupiter, FL 33458

**FIELD VERIFICATION OF EXISTING CONDITIONS REQUIRED**

CONTRACTOR SHALL FIELD VERIFY ALL EXISTING CONDITIONS, AND DETERMINE WHAT ITEMS SHALL BE REUSED AND WHAT MUST BE REPLACED. ALSO, ALL ITEMS SHOWN ON DRAWINGS AS EXISTING SHALL BE FIELD VERIFIED FOR CONDITION, PROPER SIZE, FUNCTIONALITY, LOCATION AND CODE COMPLIANCE. ALL DISCREPANCIES SHALL BE REPORTED TO THE ARCHITECT PRIOR TO SUBMITTING A BID. THE BID SHALL INCLUDE ALL ITEMS REQUIRED FOR COMPLETE, PROPERLY FUNCTIONING BUILDING SYSTEMS.

---

**KEYNOTES**

- 1 REMOVE WALL, TYP. WHERE SHOWN WITH DASHED LINES.
- 2 REMOVE EXISTING DOOR, FRAME AND HEADER, TYP. WHERE SHOWN WITH DASHED LINES.
- 3 REMOVE PLUMBING FIXTURES AND CONNECTIONS. CAP-OFF BELOW FINISHED SURFACE. DO NOT CAP-OFF MAIN PLUMBING LINES.
- 4 REMOVE AND SALVAGE EXISTING ELECTRICAL PANEL.
- 5 EXIST. STRUCTURAL/WET COLUMN. DO NOT DISTURB.
- 6 REMOVE EXIST. MILLWORK, TYP. WHERE SHOWN WITH DASHED LINES.

---

**DEMOLITION LEGEND**

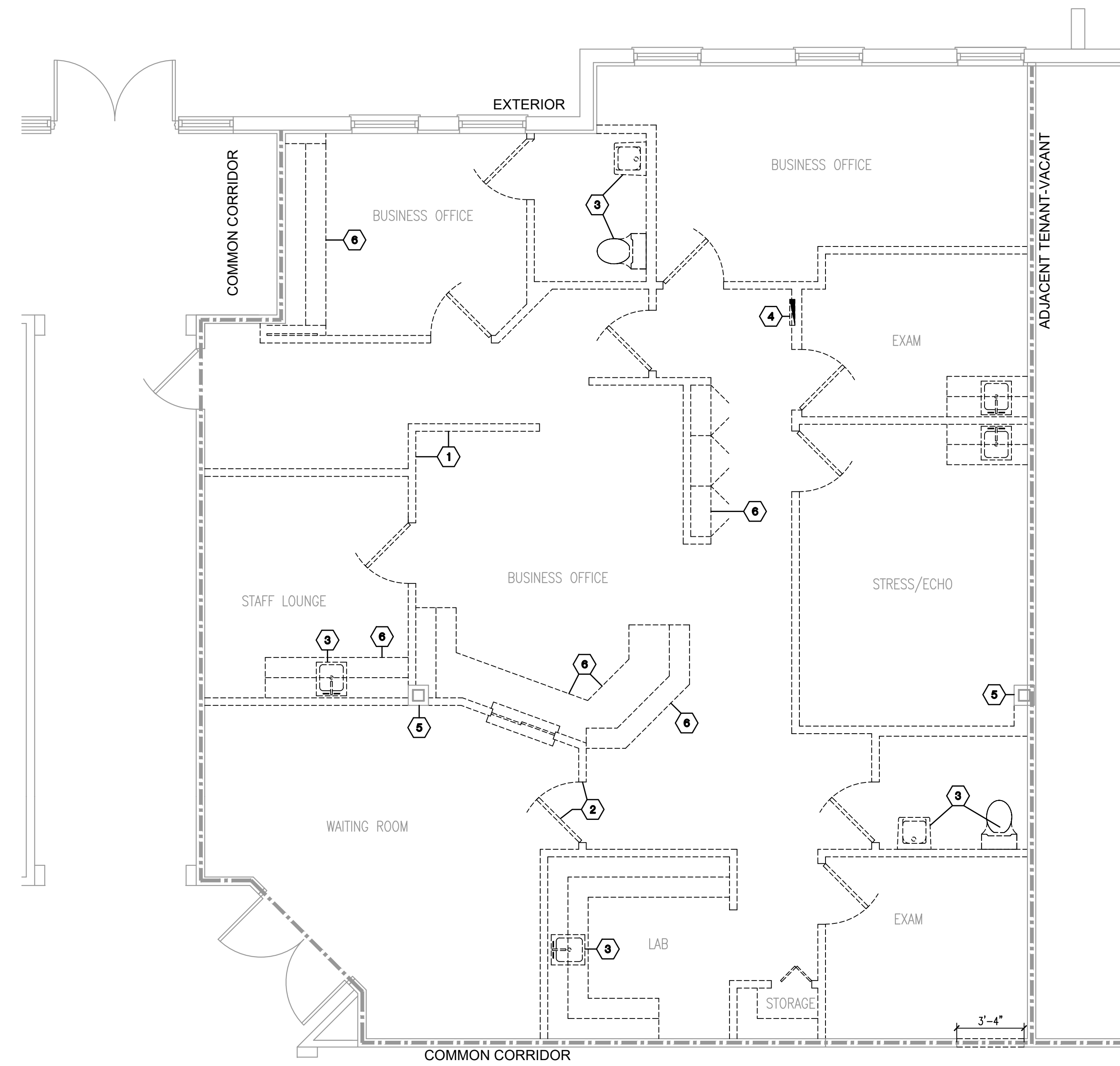
SOLID LINES INDICATE EXISTING ITEMS TO REMAIN.

DASHED LINES INDICATE EXISTING ITEMS TO BE DEMOLISHED.

---

**DEMOLITION NOTES**

1. PROVIDE NOTICE TO, AND ACQUIRE ALL NECESSARY PERMITS FROM AGENCIES HAVING JURISDICTION OVER DEMOLITION.
2. REMOVE EXISTING DOORS AND FRAMES AS SHOWN.
3. REMOVE AND SALVAGE EXIST. ELECTRICAL PANEL.
4. DETACH FROM CEILING AND TEMPORARILY ATTACH TO EXISTING STRUCTURE ALL EMERGENCY AND EXIT LIGHTS, SPEAKERS, SMOKE DETECTORS (IF ANY).
5. REMOVE ALL FLOOR & WALL FINISHES AND ALL CEILINGS. NOTIFY ARCHITECT UPON COMPLETION FOR INSPECTION.
6. EXIST. HVAC AND HARD DUCT TO REMAIN. REMOVE EXIST. FLEX, DIFFUSERS & GRILLES.
7. REMOVE ALL PLUMBING AND ELECTRICAL SERVICES FROM FLOOR.
8. PRIOR TO DEMOLITION VERIFY THAT ALL APPROPRIATE UTILITIES HAVE BEEN DISCONNECTED AND MADE SAFE.
9. REMOVE ALL WIRING FROM DEMOLISHED WALLS (BACK TO PANEL).
10. REMOVE AND CAP PLUMBING FIXTURES AND LINES PER PLAN. ELIMINATE AND CAP-OFF DEAD ENDS. SEE PLUMBING PLAN.
11. CONTROL AS MUCH AS PRACTICABLE THE SPREAD OF DUST AND DIRT. OBSERVE ENVIRONMENTAL PROTECTION REGULATIONS.
12. PROMPTLY DISPOSE OF MATERIALS RESULTING FROM DEMOLITION OPERATIONS. DO NOT ALLOW MATERIALS TO ACCUMULATE ON SITE.
13. TRANSPORT MATERIALS RESULTING FROM DEMOLITION OPERATIONS AND LEGALLY DISPOSE OFF-SITE.
14. UPON COMPLETION OF DEMOLITION OPERATIONS, REMOVE ALL TOOLS AND EQUIPMENT AND DISPOSE OFF-SITE ALL REMAINING DEBRIS.
15. LEAVE ALL AREAS (INCLUDING EXTERIOR) NOT AFFECTED BY DEMOLITION, FREE OF DEBRIS.
16. RETURN STRUCTURES AND SURFACES TO REMAIN TO CONDITION EXISTING PRIOR TO COMMENCEMENT OF DEMOLITION.
17. PATCH AND FIX ALL EXISTING DAMAGED FLOOR AND WALL SURFACES. PREPARE WALL AND FLOOR SURFACES TO RECEIVE NEW FINISHES.
18. COORDINATE WITH BUILDING OWNER/MANAGER ROUTES FOR WORKMEN, LOCATION OF DUMPSTERS, PARKING FOR WORKMEN, AND TIMES OF ANY UTILITY DISRUPTIONS.



**DEMOLITION PLAN**  
 SCALE: 1/4"=1'-0"

LESLAW A. CZACZYK AIA	
AR 00015391	
PROJ. NO.	16176
DESIGNED BY	LAC
DRAWN BY	LAC
DATE	11/30/16
SCALE	AS SHOWN

**DEMOLITION PLAN NOTES**