

**LCA** AA 003432  
 Architecture, Inc.  
 1975 Sansbury's Way  
 Suite 108  
 West Palm Beach, FL 33411  
 Phone: (561) 493-4787  
 Fax: (561) 493-4786

REVISIONS / DATE

HOT OR COLD WATER SUPPLY

IF HORIZONTAL BRANCH IS LESS THAN 20' LONG, PROVIDE ONE WHA AT END OF LINE.  
 IF BRANCH IS GREATER THAN 20' LONG, PROVIDE ANOTHER WHA IN MIDDLE, EACH SIZED FOR HALF THE FIXTURE UNITS

INSTALL PER PDI STANDARDS AND MANUFACTURER'S INSTRUCTIONS

PDI SIZE "A"

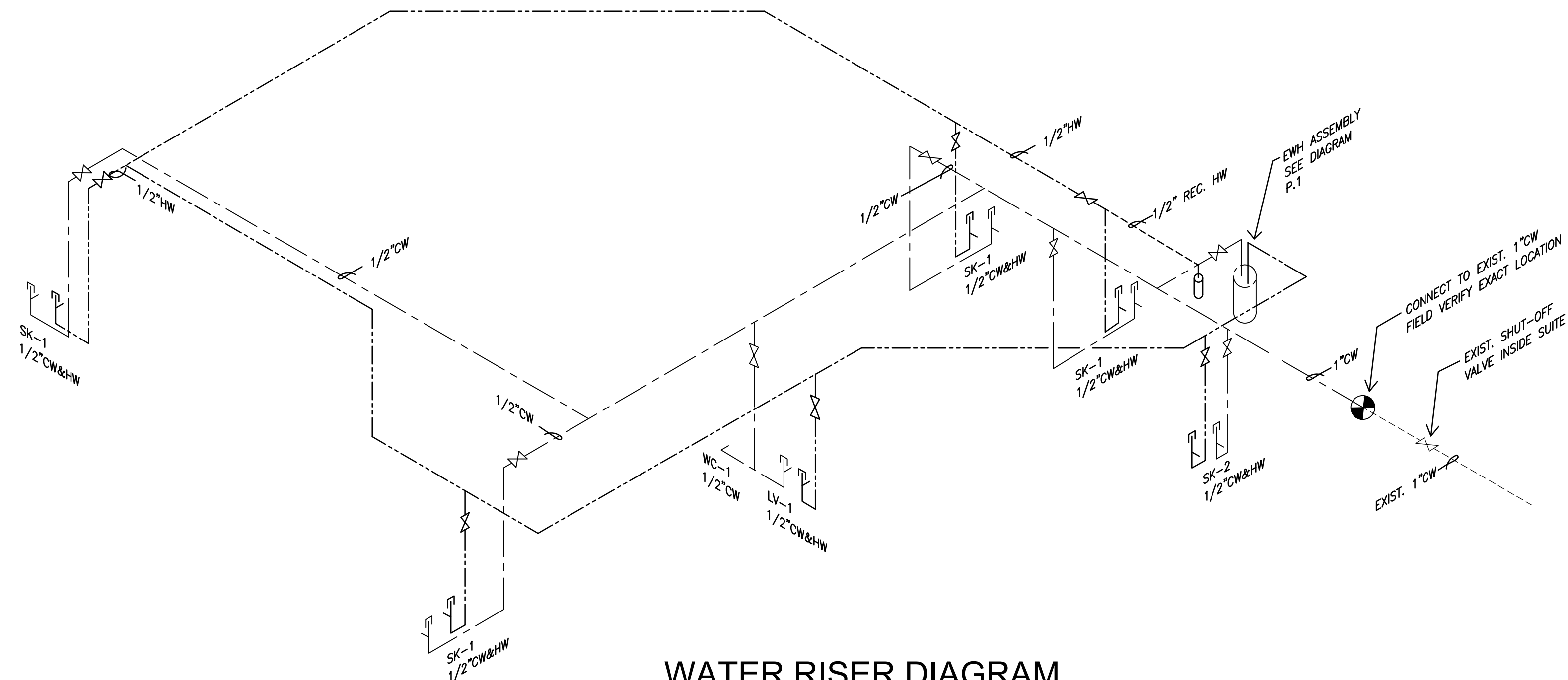
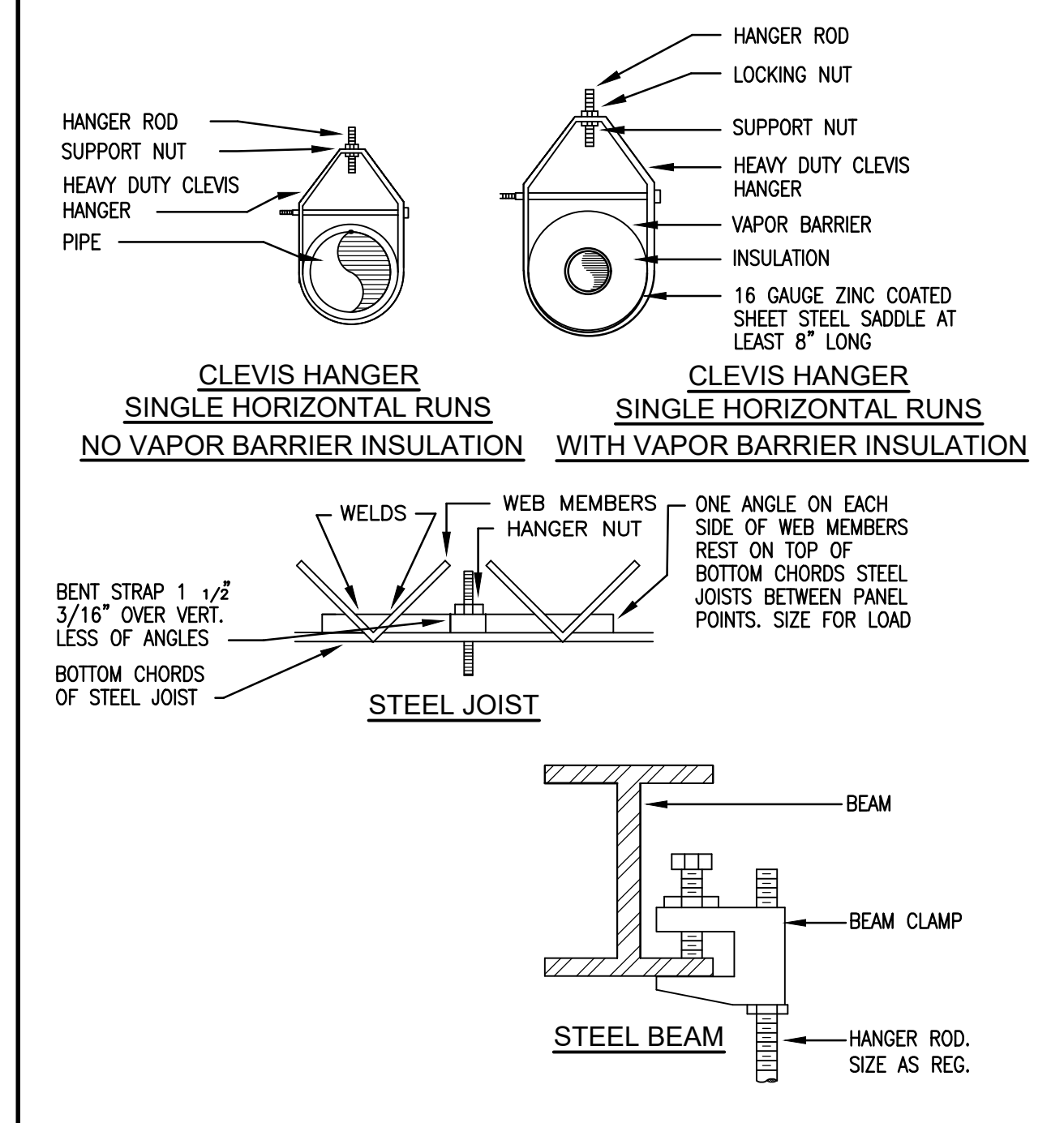
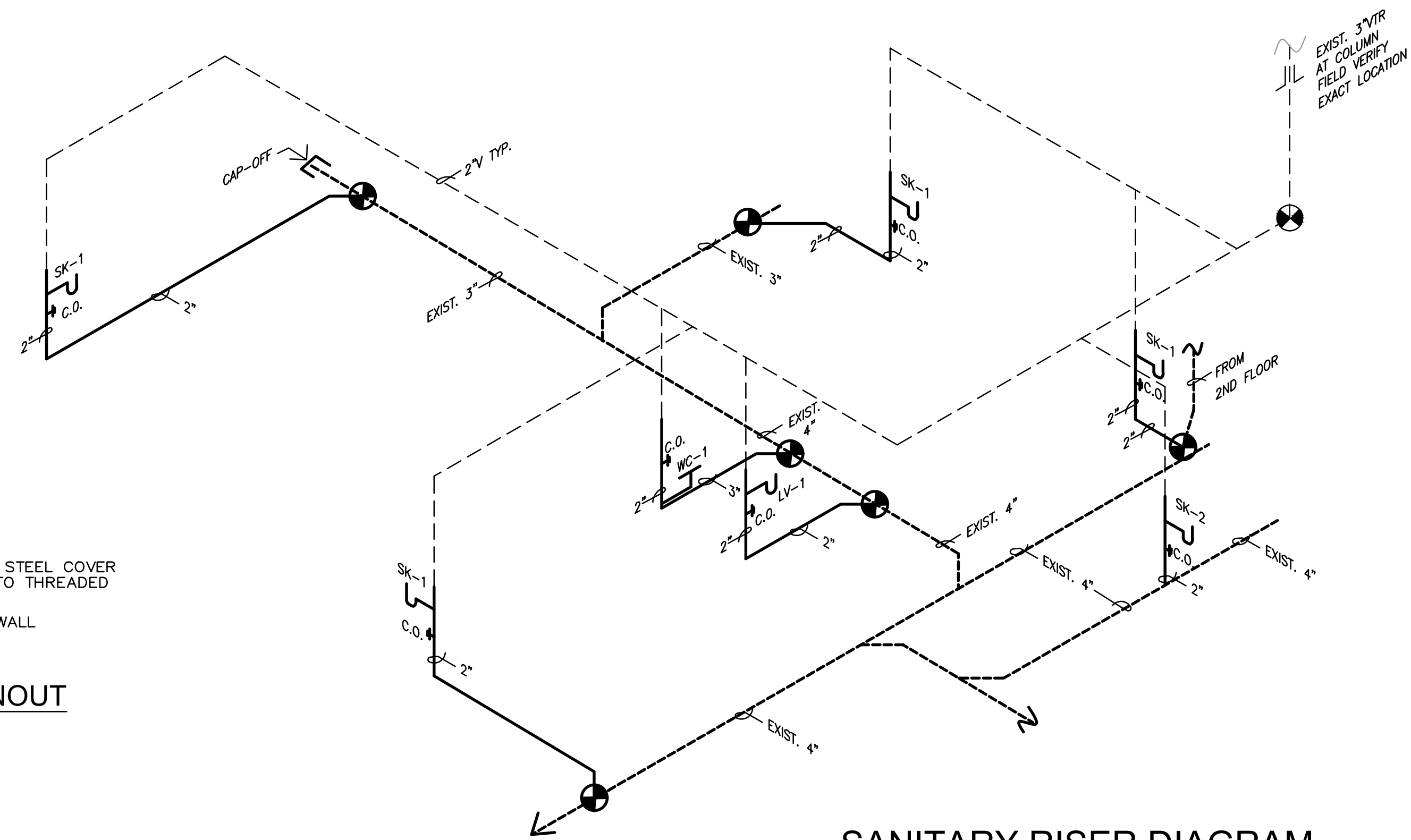
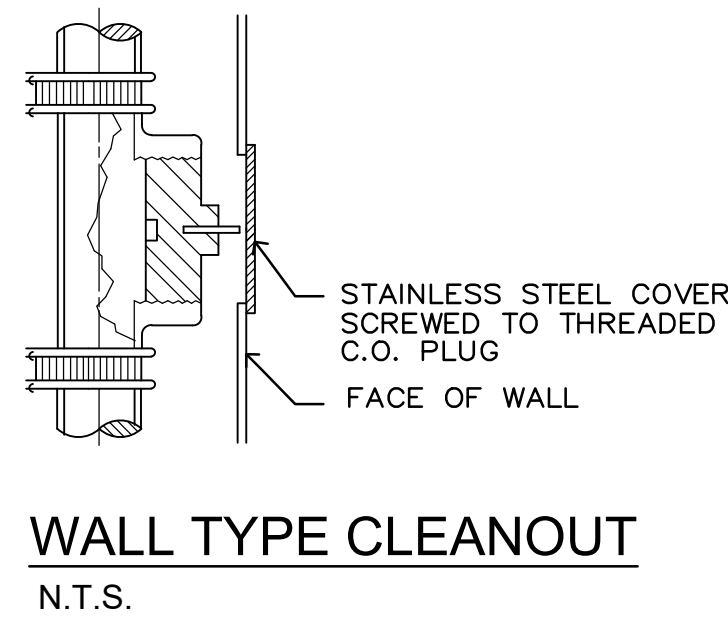
SINGLE FIXTURE			MULTIPLE FIXTURES		
PDI SIZE	PIPE SIZE	FIXTURE UNIT LOAD	FIXTURE UNIT TABULATION		
A	1/2	1-11	FIXTURE	COLD	HOT
B	3/4	12-32	VALVE WATER CLOSET	6	---
C	1	33-60	TANK WATER CLOSET	5	---
D	1-1/4	61-113	URINAL	5	---
E	1-1/2	114-154	LAVATORY/SINK	1.5	1.5
F	2	154-330	JANITOR'S SINK	3	3
			SHOWER/BATHTUB	2	2

PC TO PROVIDE WATER HAMMER ARRESTERS BY SIOUX CHIEF.

ALTERNATES: PRECISION PLUMBING PRODUCTS, WATTS OR APPROVED EQUIVALENT WITH PISTON AND O-RING CONSTRUCTION, HAVING PDI #WH-201, ASSE #1010 AND ANSI #A112.26.1M CERTIFICATION. INSTALL IN THE HORIZONTAL OR VERTICAL POSITION, BUT NEVER UPSIDE DOWN. INSTALL IN LINE WITH WATER FLOW DIRECTION IF POSSIBLE. SIZE THE UNITS AS SHOWN ON THE TABLES ABOVE.

INSTALL ALTERNATES IN AN ACCESSIBLE LOCATION OR WITH ACCESS PANEL

**WATER HAMMER ARRESTORS**  
 N.T.S.



**PLUMBING SYMBOLS & ABBREVIATIONS**

---	COLD WATER PIPE	CW
- - -	HOT WATER PIPE	HW

NOTE: WATER LINES ARE 3/4" U.O.N. MATERIAL: HARD DRAWN SEAMLESS COPPER

NOTE: PER FBC WATER HAMMER: "A" WATER-HAMMER ARRESTOR SHALL BE INSTALLED WHERE QUICK-CLOSING VALVES ARE UTILIZED.

Interior Improvement for  
 Your Eye Specialists  
 550 Heritage Dr., Suite 105  
 Jupiter, FL 33458

LESLAW A. CZACZYK AIA
AR 00015391
PROJ. NO. 16176
DESIGNED BY LAC
DRAWN BY LAC
DATE 11/30/16
SCALE AS SHOWN