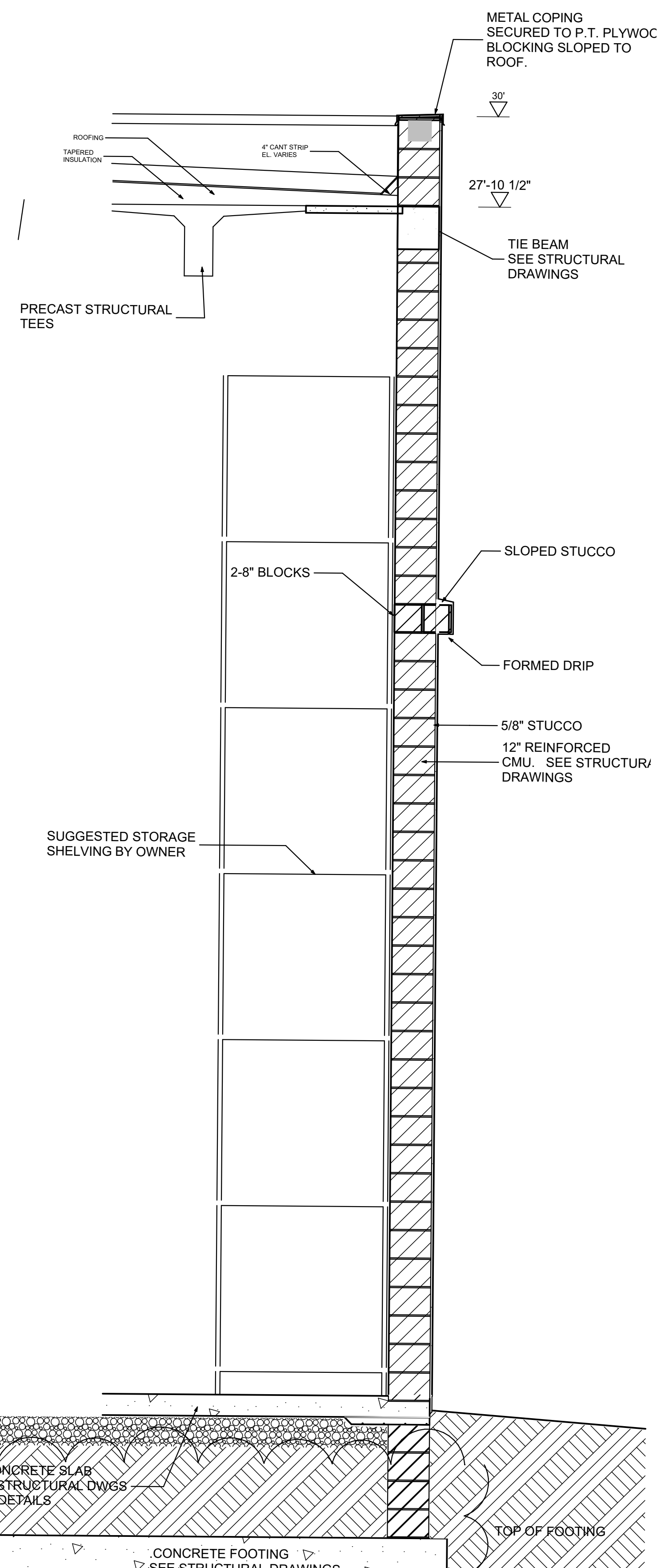


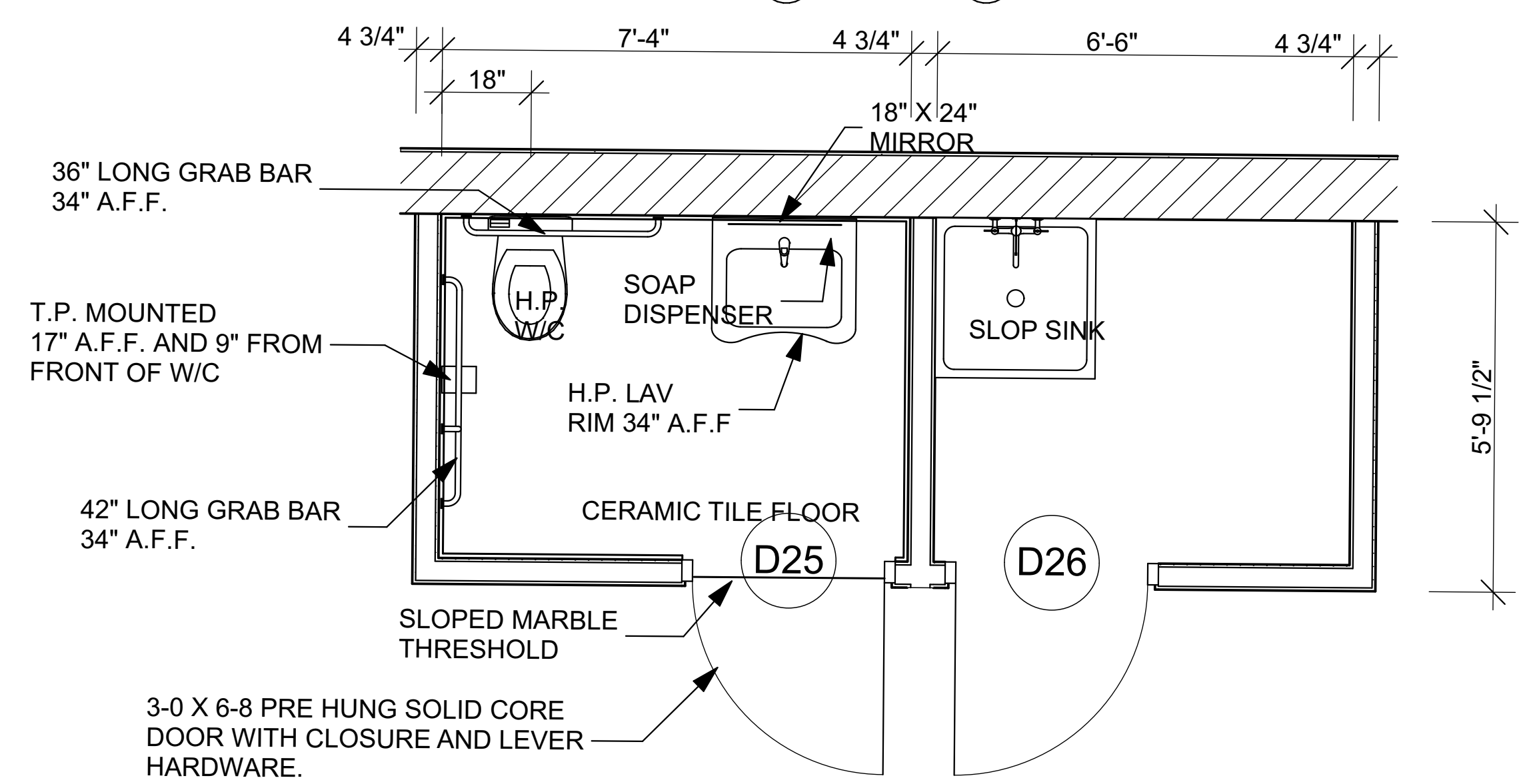
1 SECTION 1/2" = 1'-0"



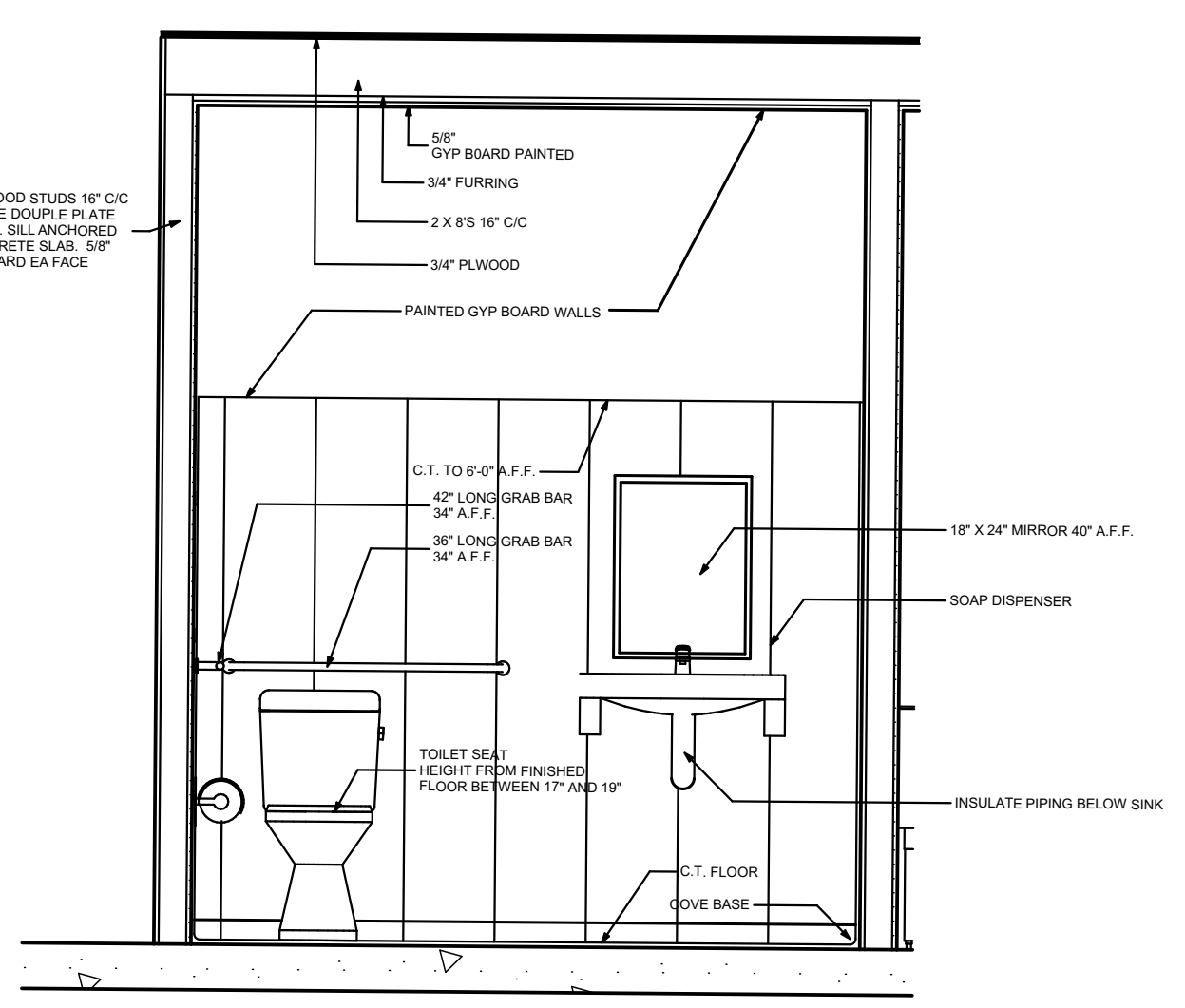
2 SECTION 1/2" = 1'-0"

DOOR SCHEDULE												
ID	TYPE	DOOR				FRAME			HW SET	NOTES	ROUGH OPENING	
		W	HT	THK	MAT'L	GLZ	W	THK			WIDTH	HEIGHT
D25	FLUSH	3'-0"	6'-8"	1 3/8"	SC WD	-	4 1/2"	1 1/2"	1	PRE HUNG		
D26	FLUSH	3'-0"	6'-8"	1 3/8"	SC WD	-	4 1/2"	1 1/2"	2	PRE HUNG		
D22	ROLL UP	14'-2"	16'							HURRICANE RATED	14'-0"	16'-0"
D23	FLUSH	3'-0"	6'-8"	1 3/4"	HM	-	8"	2"	3	HURRICANE RATED	41"	6'-10 1/2"
D27	FLUSH	3'-0"	6'-8"	1 3/4"	HM	-	8"	2"	4	HURRICANE RATED		
D28	FLUSH	3'-0"	6'-8"	1 3/4"	HM	-	8"	2"	5	HURRICANE RATED		

- HARDWARE SET
- 1 Pre hung door and frame. bath set lever hardware. Hinge closer 1 1/2 pr hinges Nickel Finish
 - 2 Pre hung door and frame. closet set lever hardware. Hinge closer 1 1/2 pr hinges Nickel Finish
 - 3 90 degree hold open lockset set lever hardware. key operated dead bolt with turn knob closer Model # UH4052 or equal commercial closer 1 1/2 pr heavy duty exterior theft proof hinges Nickel Finish
 - 4 90 degree hold open lockset set lever hardware. Blank exterior. key operated dead bolt with turn knob closer Model # UH4052 or equal commercial closer 1 1/2 pr heavy duty exterior theft proof hinges Nickel Finish
 - 5 pass set lever hardware. Blank exterior. key operated dead bolt with turn knob Knob Box 1 1/2 pr heavy duty exterior theft proof hinges Nickel Finish



TOILET ROOM



2 SECTION 1/2" = 1'-0"

CONTRACTOR SHALL VERIFY ALL DIMENSIONS AND SHALL NOTIFY THE ARCHITECT IN WRITING OF ANY AND ALL DISCREPANCIES PRIOR TO COMMENCEMENT OF THE WORK.

PROJECT: STS INKS PROPOSED WAREHOUSE 8300 CONGRESS AVENUE BOCA RATON, FLORIDA	NO. REVISIONS 1	DATE 04/05/2012
	LOWERED PAC UNITS TO GRADE ADDED DOOR TO F.A. ROOM	DATE 04/05/2012
	ADDED DOOR TO F.A. ROOM	SCALE: AS NOTED
PROJECT NUMBER: AR 10248		DRAWING NUMBER: A-401
PROJECT: DOMINICK SCARFO ARCHITECT 1620 N.W. 11th AVENUE CORAL SPRINGS, FLORIDA 33071		DRAWING TITLE: WALL SECTIONS AND TOILET ROOM PLAN & ELEVATION
PROJECT: STS INKS PROPOSED WAREHOUSE 8300 CONGRESS AVENUE BOCA RATON, FLORIDA		SHEET 13 OF 14