

LEVEL 2 ALTERATION
TENANT BUILD-OUT FOR:
SF PROCESSING
1315 N. FEDERAL HWY, 2ND FLOOR
BOYNTON BEACH, FL. 33435

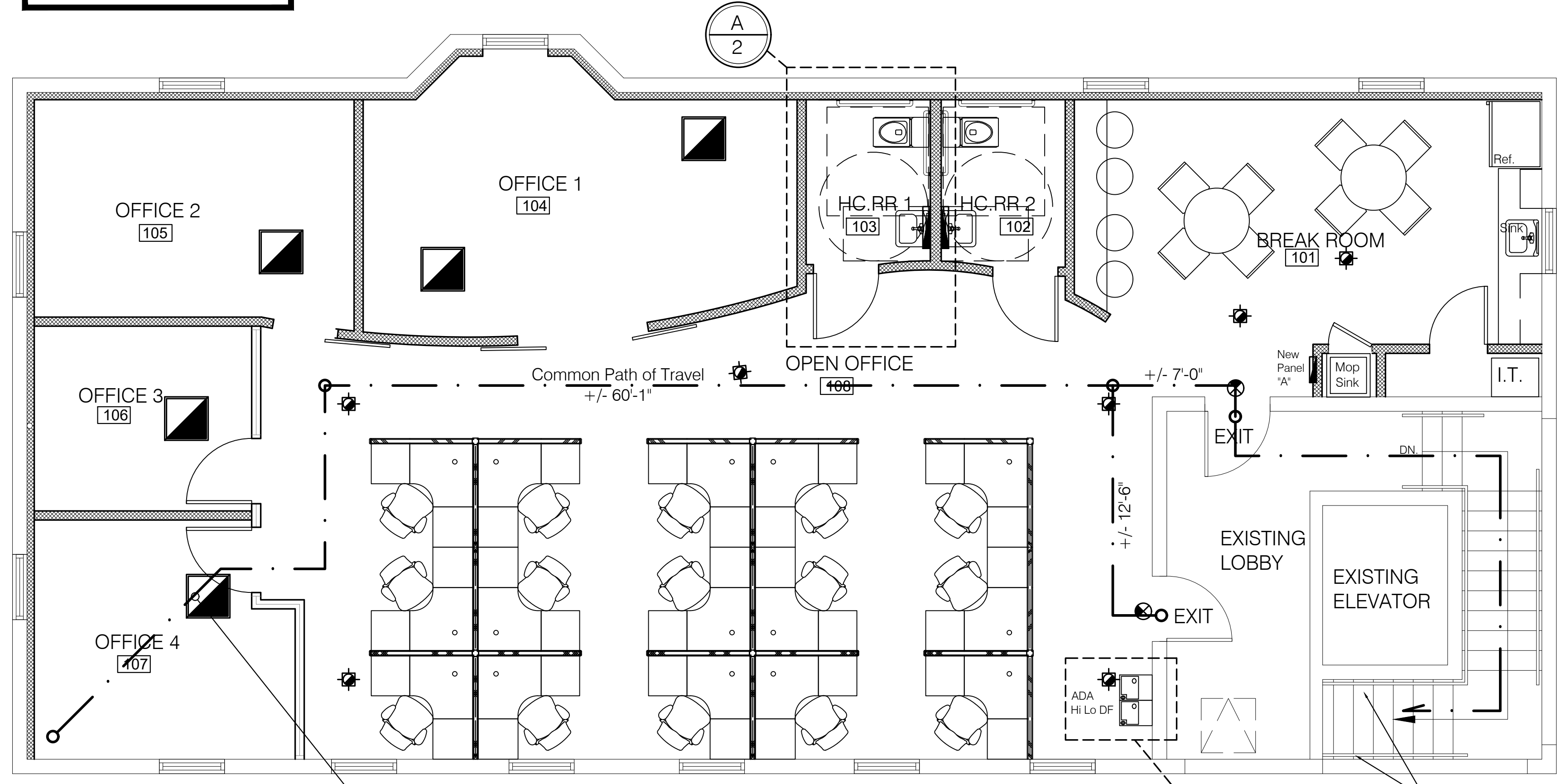
JOHN SHERMAN REED
ARCHITECT
FL LICENSE# AR95171

JSR DESIGN GROUP INC.
AA26002033 970 SW 11TH STREET
BOCA RATON, FL 33486
PH. 561-362-7203
FAX. 561-362-7204

3/1/2016 4:44 PM JDRG

1. All designs and concepts are the property of JSR Design Group Inc., and may not be modified or copied without written permission by the architect.
2. Contractor to verify all written dimensions (Not scaled) & notify architect of any discrepancies or omissions. Construction shall not proceed until said discrepancies or omissions have been resolved by architect.
3. Contractor to verify and approve all shop drawings and dimensions before having drawings reviewed and accepted by the architect prior to construction.

Only Emergency Lights are shown.
See Electrical plans for exact location and lighting types



Maximum travel distance:
67'-1" to exit door
101'-4" (down open stairs to exit)
(200' permitted)

G.C. TO PROVIDE HANDRAILS
AS PER ADA SECT. 505

Proposed 2nd Floor Safety Plan
1/4" Sc.

OCCUPANCY LOADS

Occupancy classification
(B) - Business

Business Areas: the area per occupant is 1 to 100 S.F. gross (F.B.C. Building, Table 1004.1.1 Maximum Floor Area Allowances per Occupant).

2nd Floor: 1,882 S.F./ 100 Gross = 19.9 occupants.

* Total Occupants = 20

NFPA Interior Office Finish Schedule
per section 39.3.3
Floors: No Requirements
Walls: Required: Class A, B, or C compliance
Provided: Class A Drywall

Egress Note:
Egress routes illustrated are from the furthest travel distance

Contractor to verify that the final illumination for exit access will be at least 0.2 foot candelas at floor level per F.B.C. 1016.1.4

NFPA 101
Life Safety Code Table A.7.6.1 Common Path, Dead End, and Travel Distance Limits
Business

Common Path Limit	Allowable	Proposed
Un Sprinklered	75'	60'-1"
Dead-End Limit		
Un Sprinklered	20'	
Travel Distance Limit		
Un Sprinklered	200'	90'