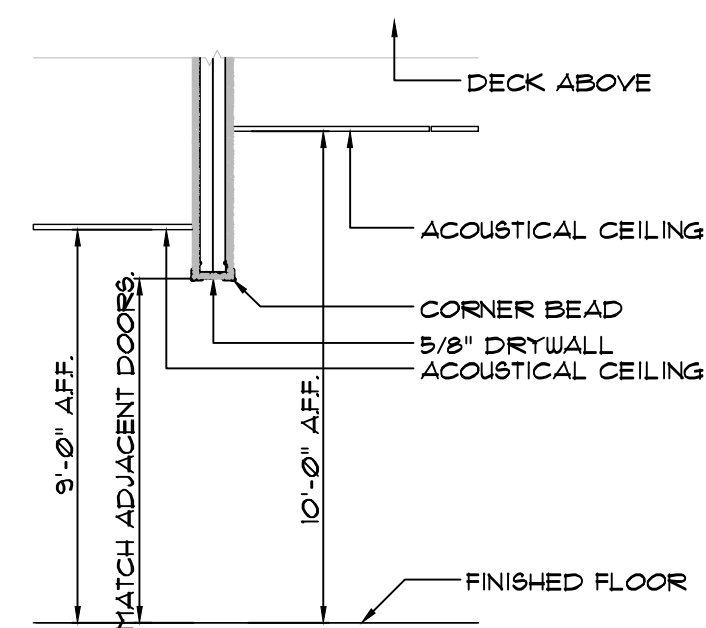
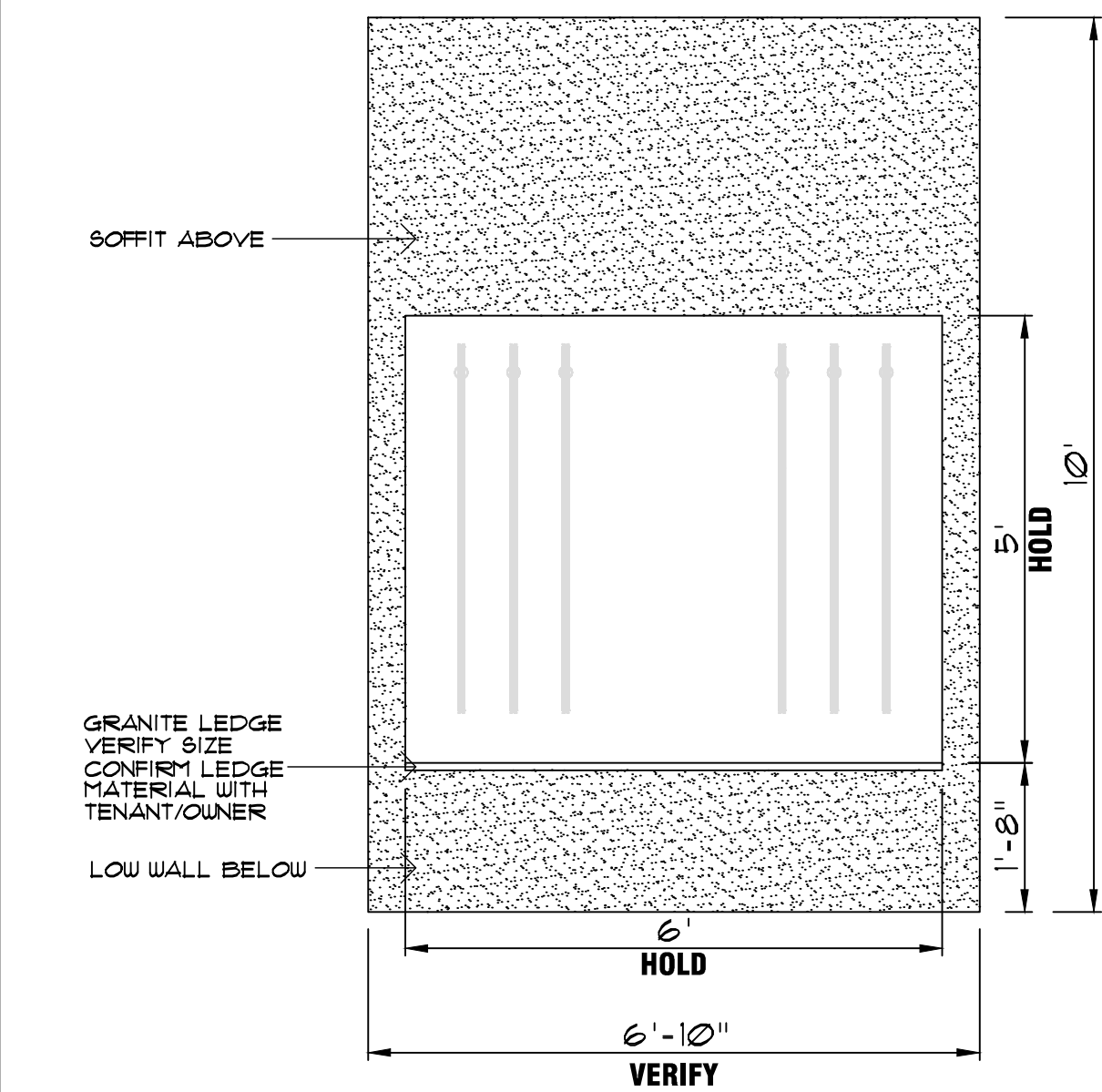


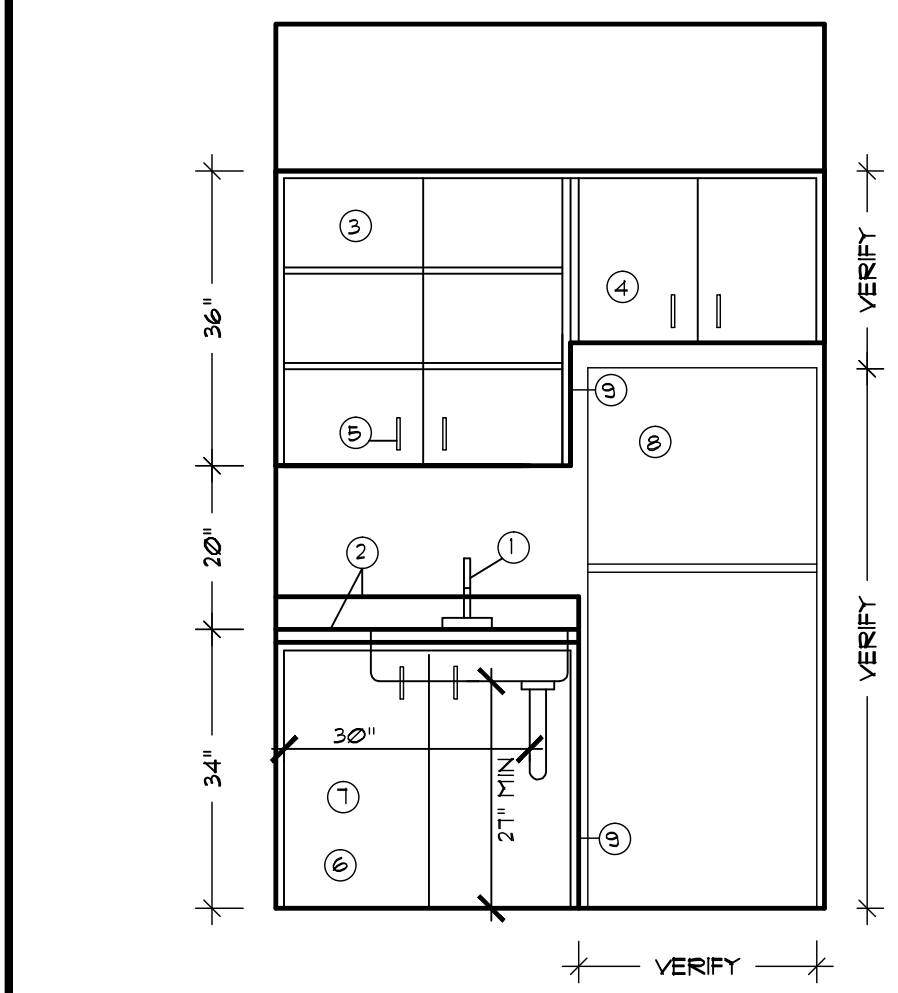
1 SOFFIT DETAIL
SCALE: 1/2" = 1'-0"



3 SOFFIT DETAIL
SCALE: 1/2" = 1'-0"



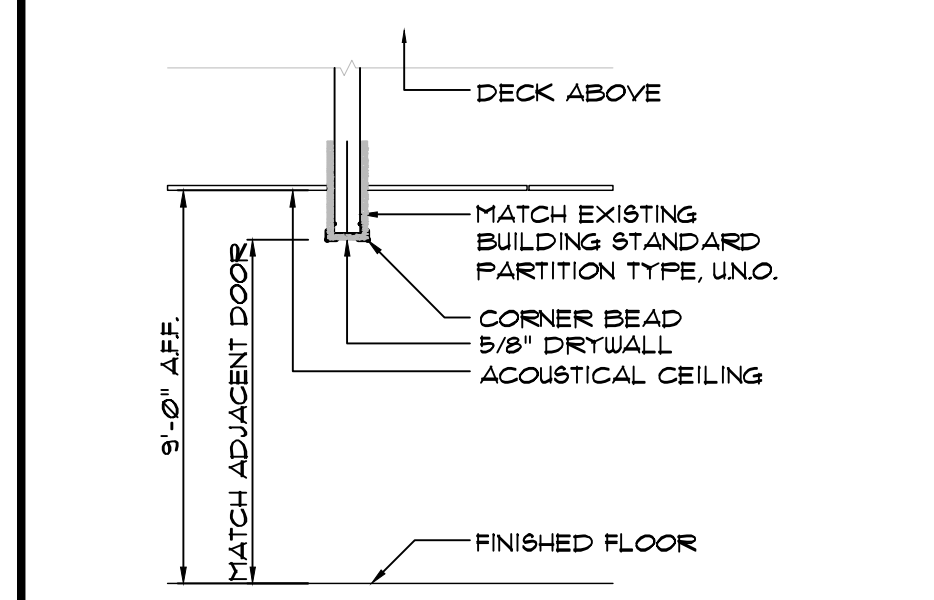
4 WALL NICHE
SCALE: 1/2" = 1'-0"



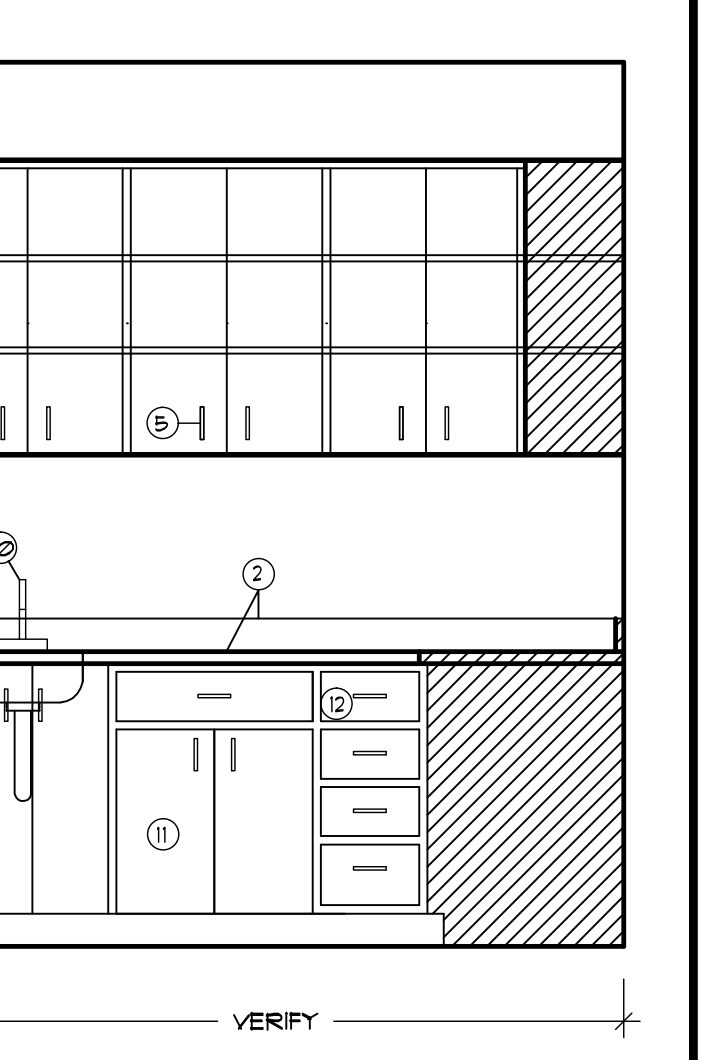
5 LOUNGE
SCALE: 1/2" = 1'-0"

GENERAL CABINETRY NOTES:
A. PLASTIC LAMINATE ALL EXPOSED SURFACES - COLOR TO BE DETERMINED
B. PROVIDE FOR A 2\"/>

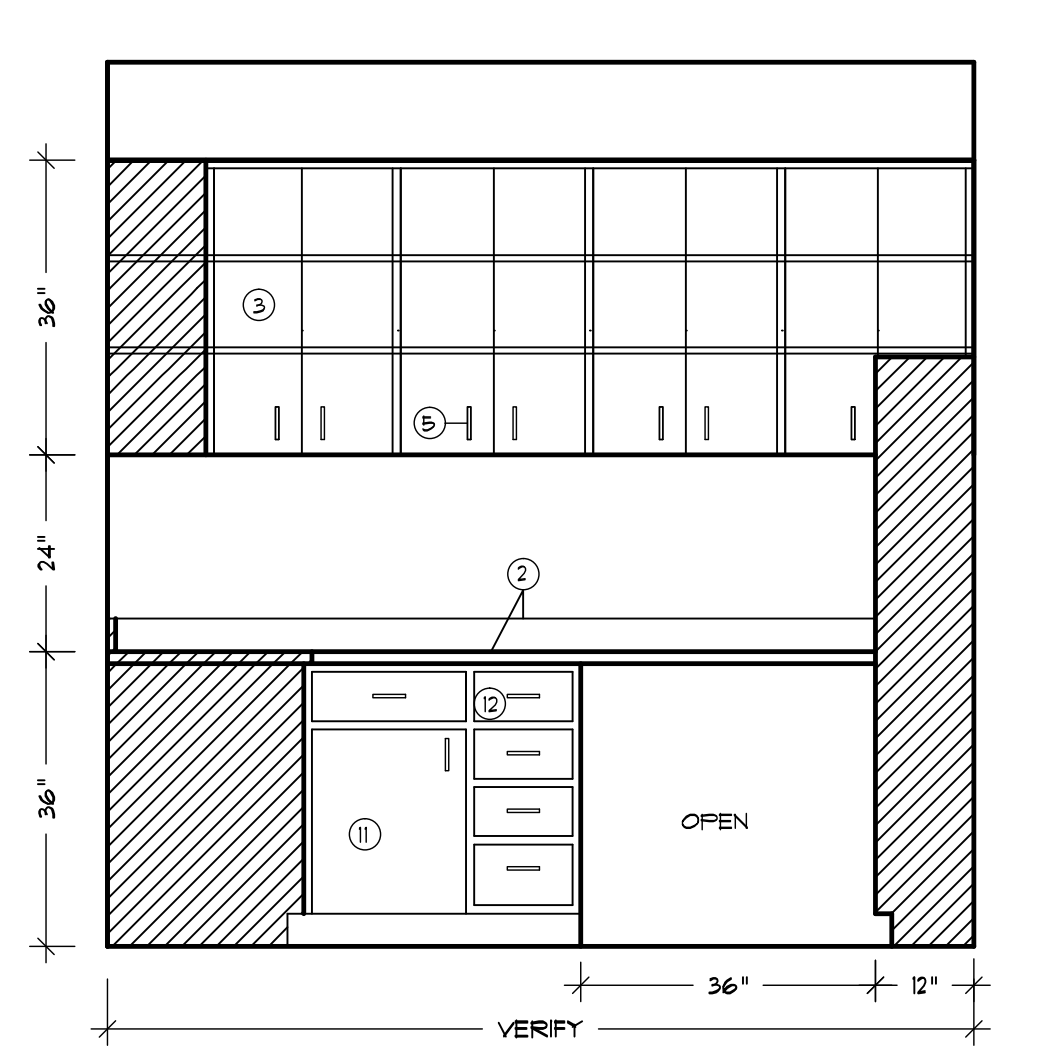
CABINETRY REFERENCE NOTES
1 ADA COMPLIANT 20 GAUGE -TYPE 302 -SELF RIM SINK COUNTER RIM TO BE MOUNTED NO HIGHER THAN 24\"/>



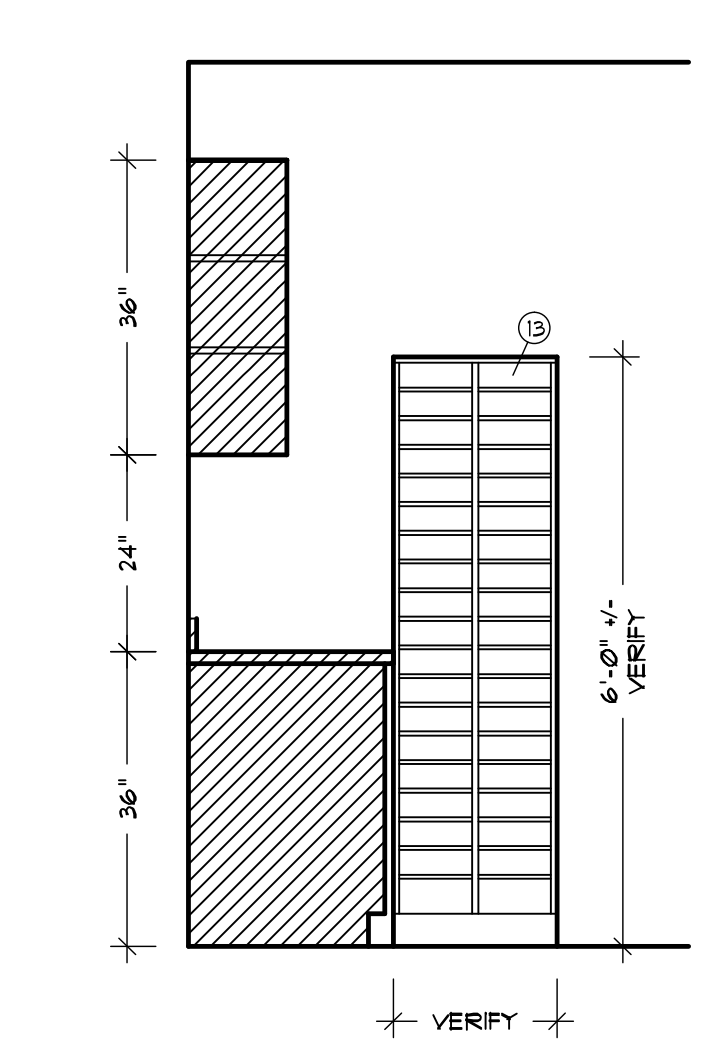
2 SOFFIT DETAIL
SCALE: 1/2" = 1'-0"



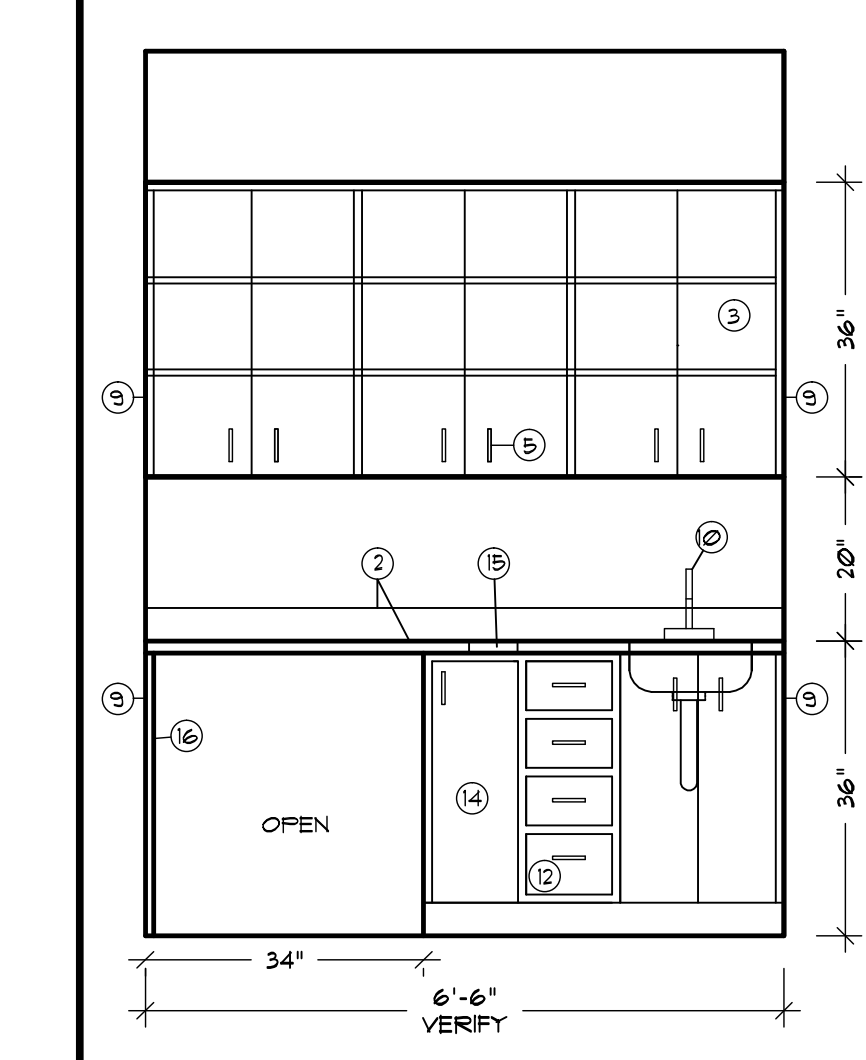
7 OPTICAL LAB
SCALE: 1/2" = 1'-0"



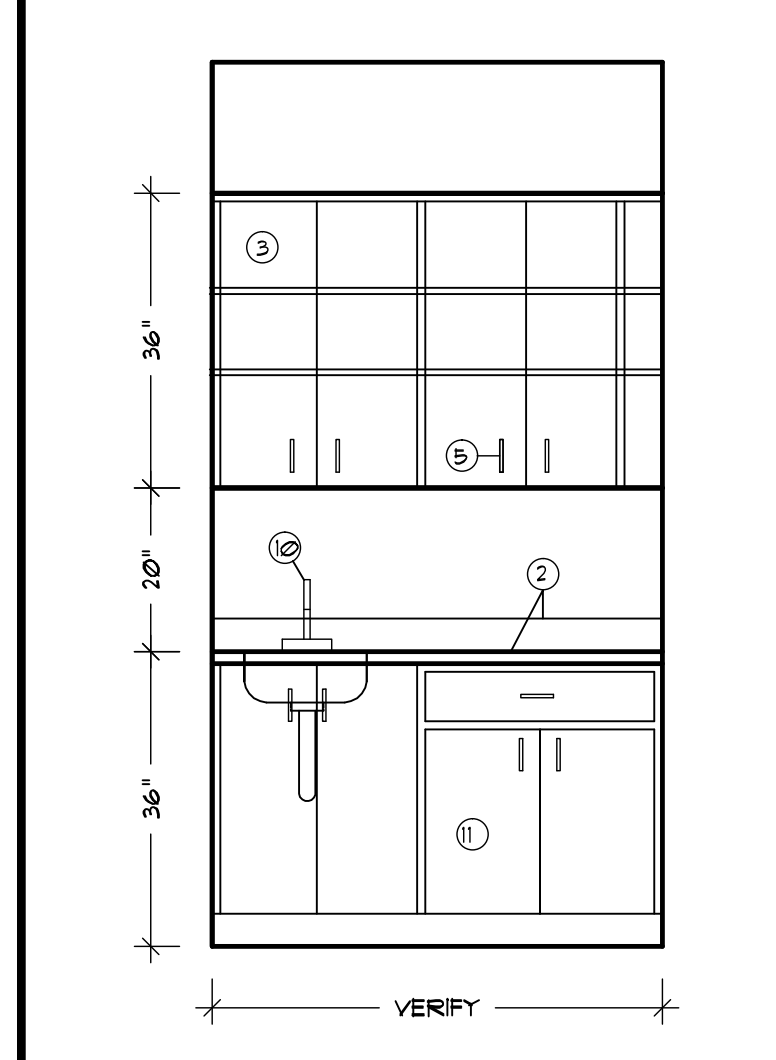
8 OPTICAL LAB
SCALE: 1/2" = 1'-0"



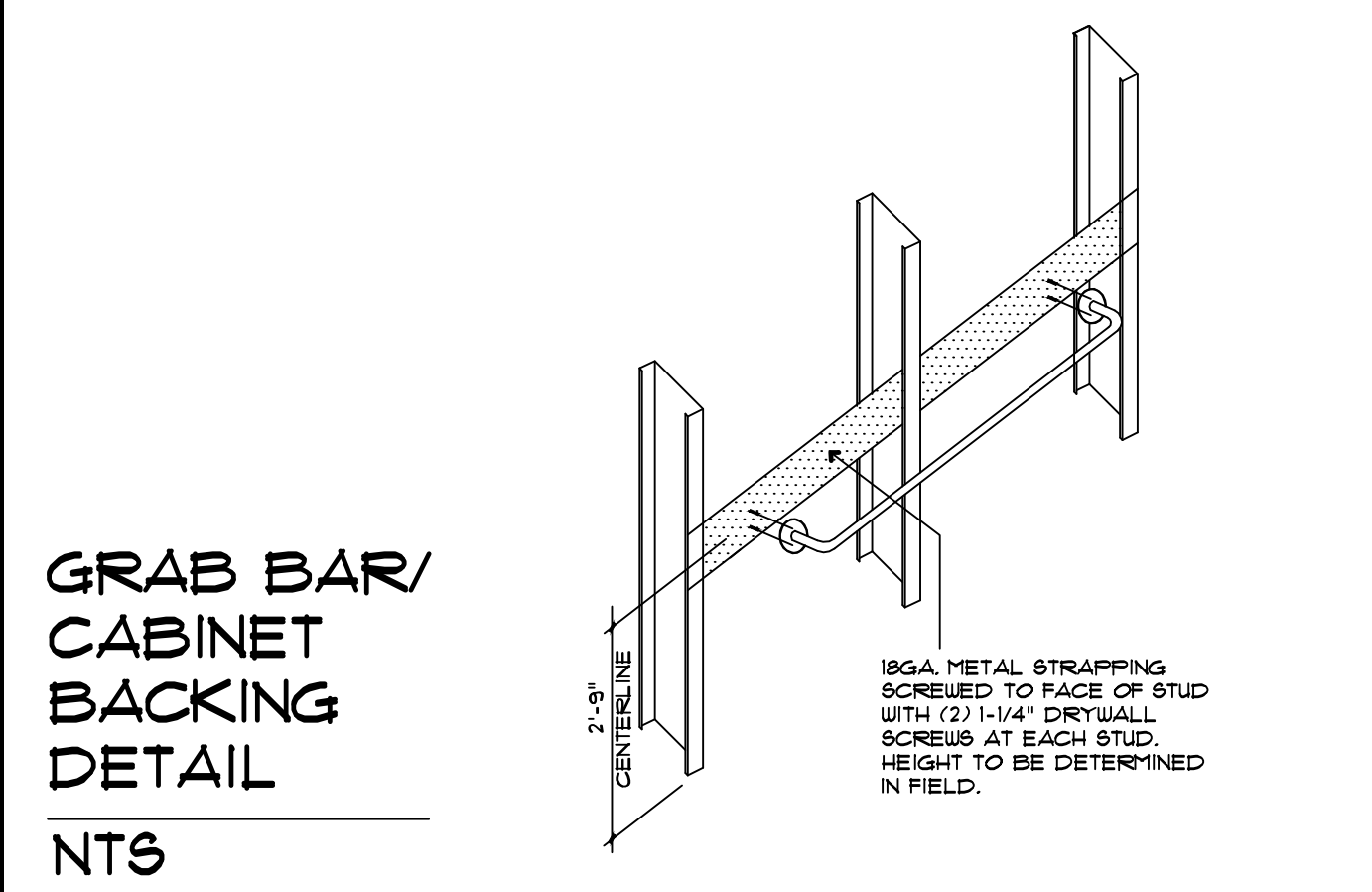
9 OPTICAL LAB
SCALE: 1/2" = 1'-0"



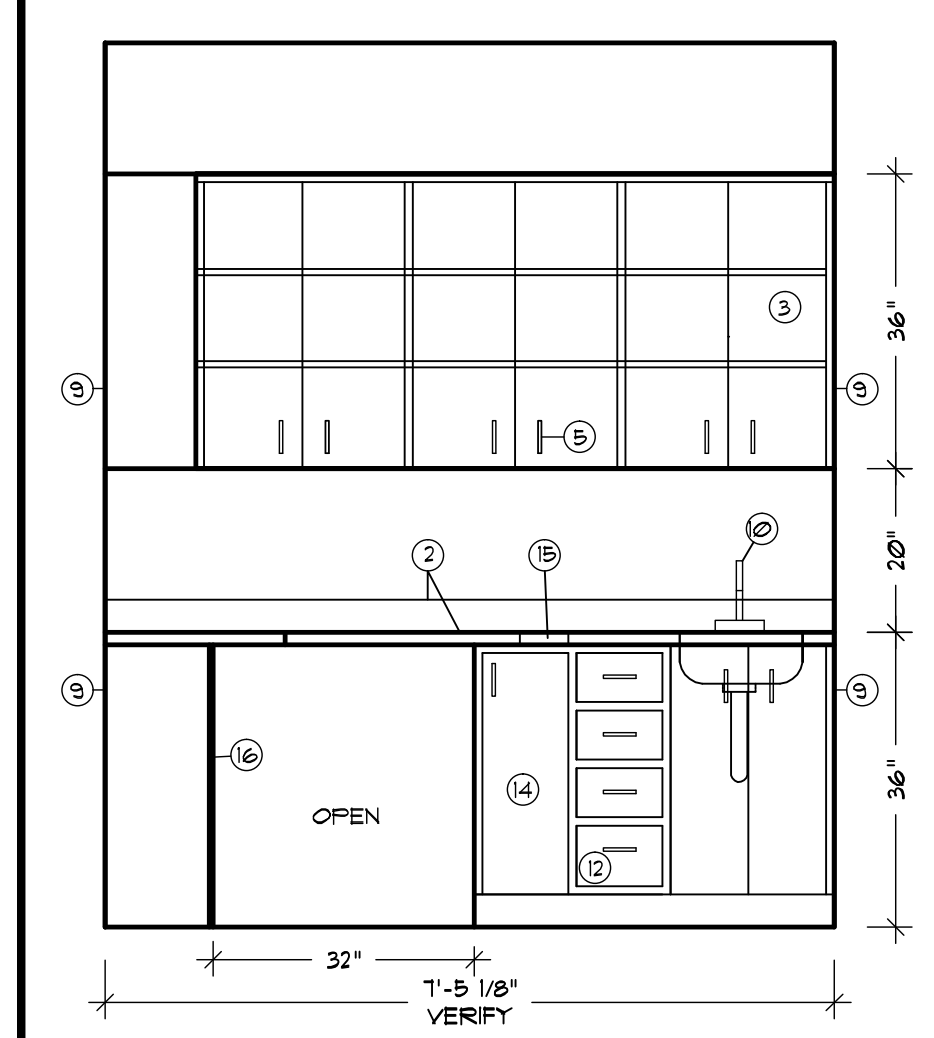
10 EXAM #1, #2, #4
SCALE: 1/2" = 1'-0"



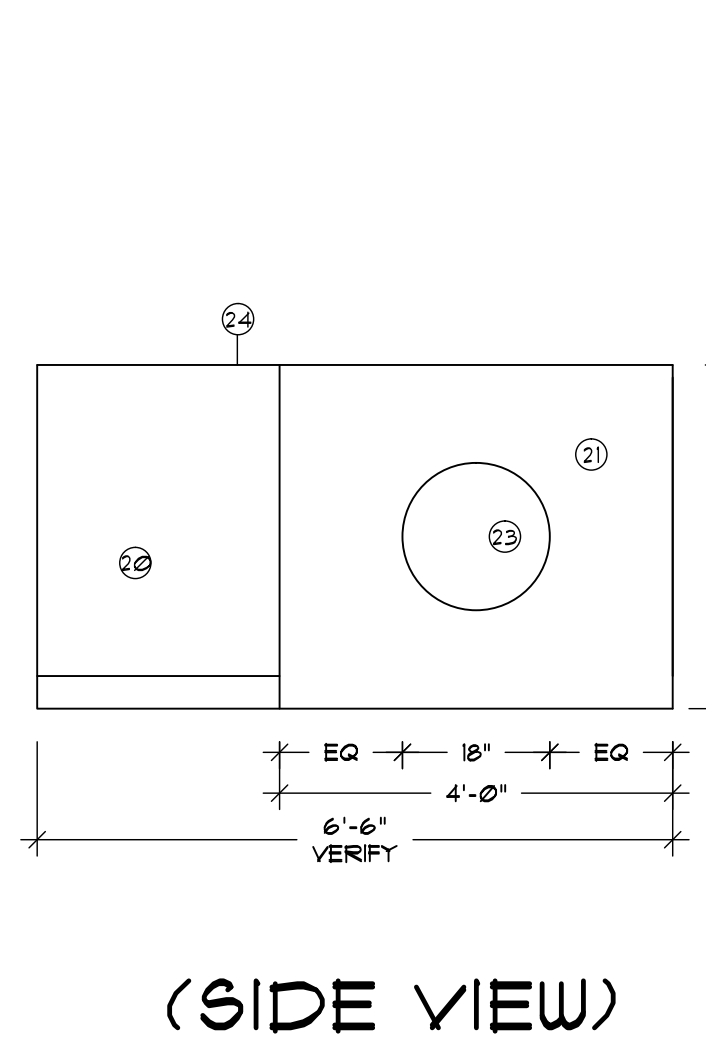
6 CONTACT LENS 1/R
SCALE: 1/2" = 1'-0"



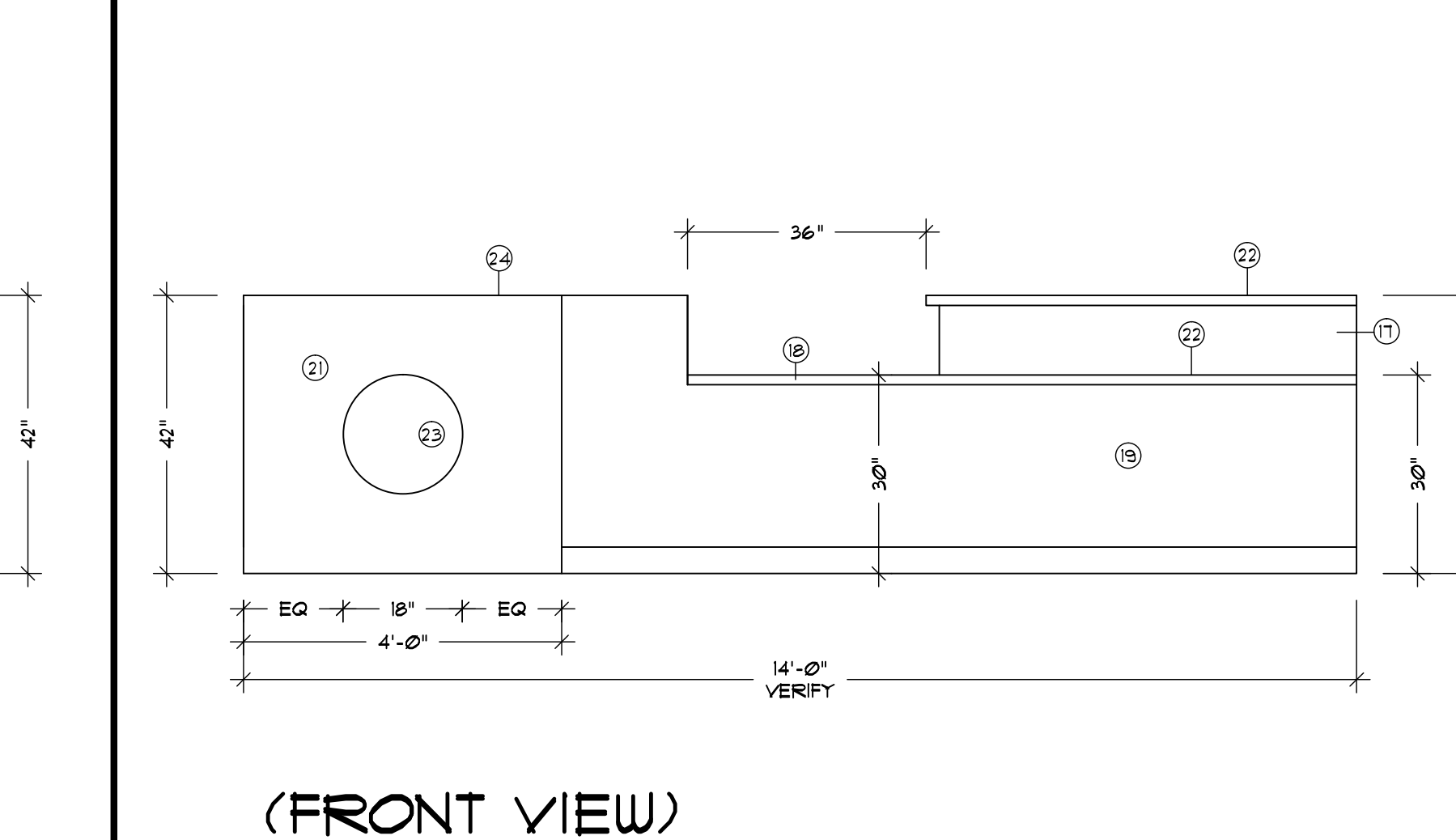
GRAB BAR/
CABINET
BACKING
DETAIL
NTS



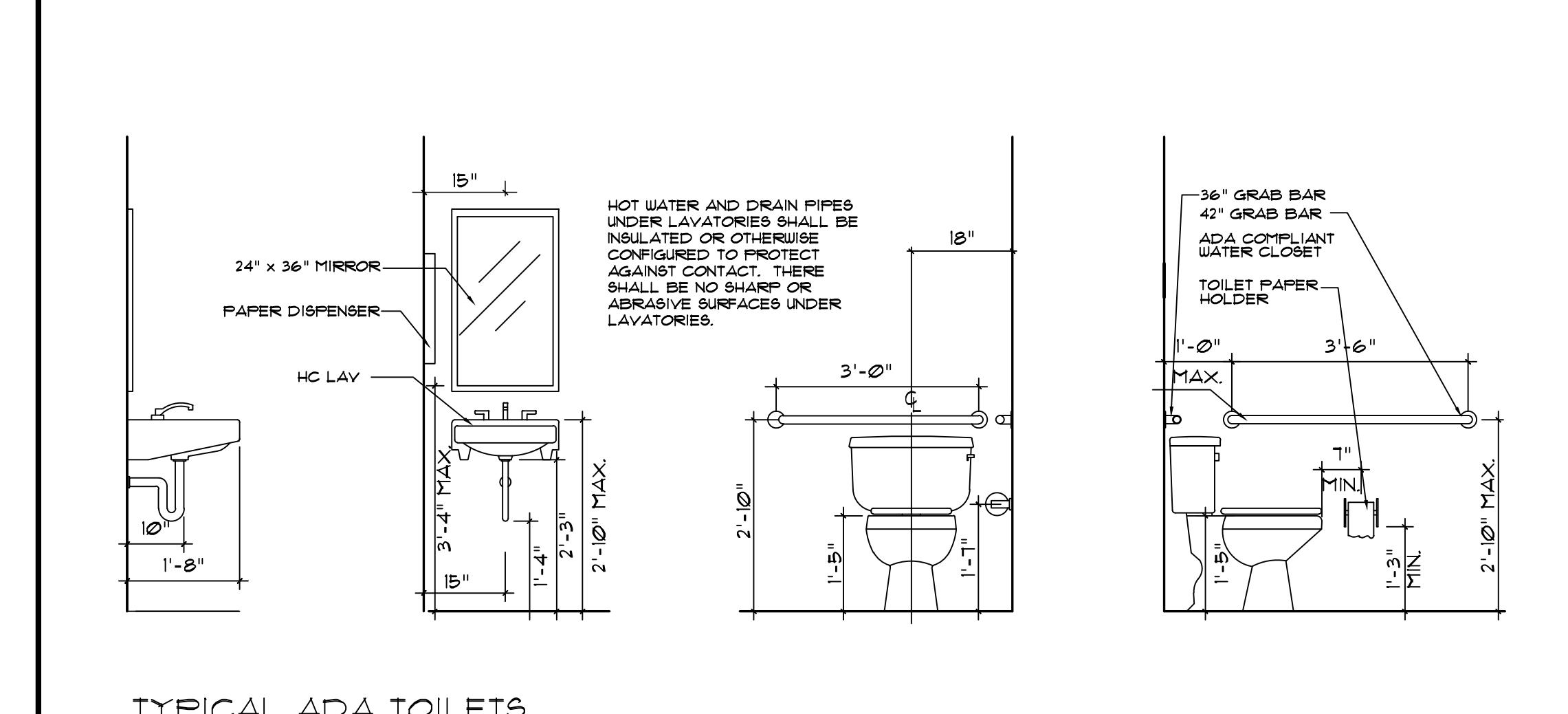
10 EXAM #3
SCALE: 1/2" = 1'-0"



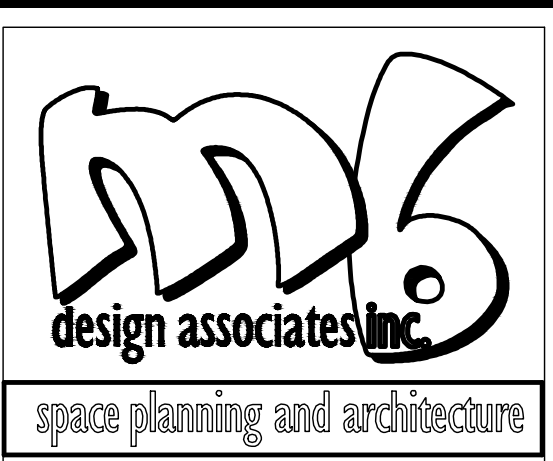
11 RECEPTION DESK
SCALE: 1/2" = 1'-0"



12 RECEPTION DESK
SCALE: 1/2" = 1'-0"



TYPICAL ADA TOILETS
RESTROOM ELEVATIONS
SCALE: 1/2" = 1'-0"



MB DESIGN ASSOCIATES, INC.
FLORIDA LICENSE #: AA26000521
P.O. Box 4376
Tequesta, Florida 33469
phone: (561) 222-2993
email: tjmarist@aol.com

THE FOLLOWING CODES WERE USED IN THE DESIGN OF THIS PROJECT:
2014 FLORIDA BUILDING CODE
EXISTING BUILDING, BUILDING, PLUMBING, FUEL GAS, MECHANICAL, TEST PROCEDURES FOR HIGH VELOCITY HURRICANE ZONES, ACCESSIBILITY AND ENERGY
2011 NATIONAL ELECTRICAL CODE NFPA 70
FLORIDA FIRE PREVENTION CODE, 5TH EDITION (INCLUDING NFPA 1, 2012 AND 101, 2012 EDITION) WITH FLORIDA AMENDMENTS

PROJECT NAME/LOCATION:
ADVANCED VISION CARE
DR. AMIR CUKIERMAN, O.D.
3893 MILITARY TRAIL
SUITE #4
ADMIRAL'S CROSSING
JUPITER, FL

I (WE) HAVE REVIEWED THESE DRAWINGS, UNDERSTAND THE WORK OUTLINED THEREON, AND HEREBY APPROVE SAME FOR CONSTRUCTION.

BY:
DATE:

THESE DRAWINGS ARE BASED ON EXISTING DRAWINGS WHEN AVAILABLE. FIELD INSPECTION OF AS BUILT CONDITIONS AND OTHER INFORMATION FROM THE BUILDING OWNER, MAINTENANCE DEPARTMENT AND AS NOTED. INFORMATION WAS GATHERED WITHOUT "DESTRUCTIVE INVESTIGATION" CUTTING INTO EXISTING SURFACES TO REVEAL STRUCTURE, PIPING, DUCTWORK, ETC). CONTRACTORS AND SUBCONTRACTORS ARE TO BASE BIDS ON INFORMATION SHOWN. SHOULD CONSTRUCTION REVEAL THAT EXISTING CONDITIONS ARE NOT AS ANTICIPATED OR AS SHOWN ON THESE DRAWINGS THE CONTRACTOR AND/OR SUBCONTRACTORS WILL NOTIFY THE OWNER/TENANT OF THE DIFFERENCE AND THE PRICE WILL BE ADJUSTED UP OR DOWN TO REFLECT THE DISCREPANCY.

JOB #: DR CUKIERMAN
DATE: 3/16/2016
SCALE: VARIES
DRAWN BY: JM

ISSUED: REVISIONS:

SHEET NO:
A-2
OF 4