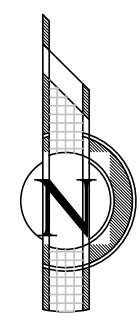
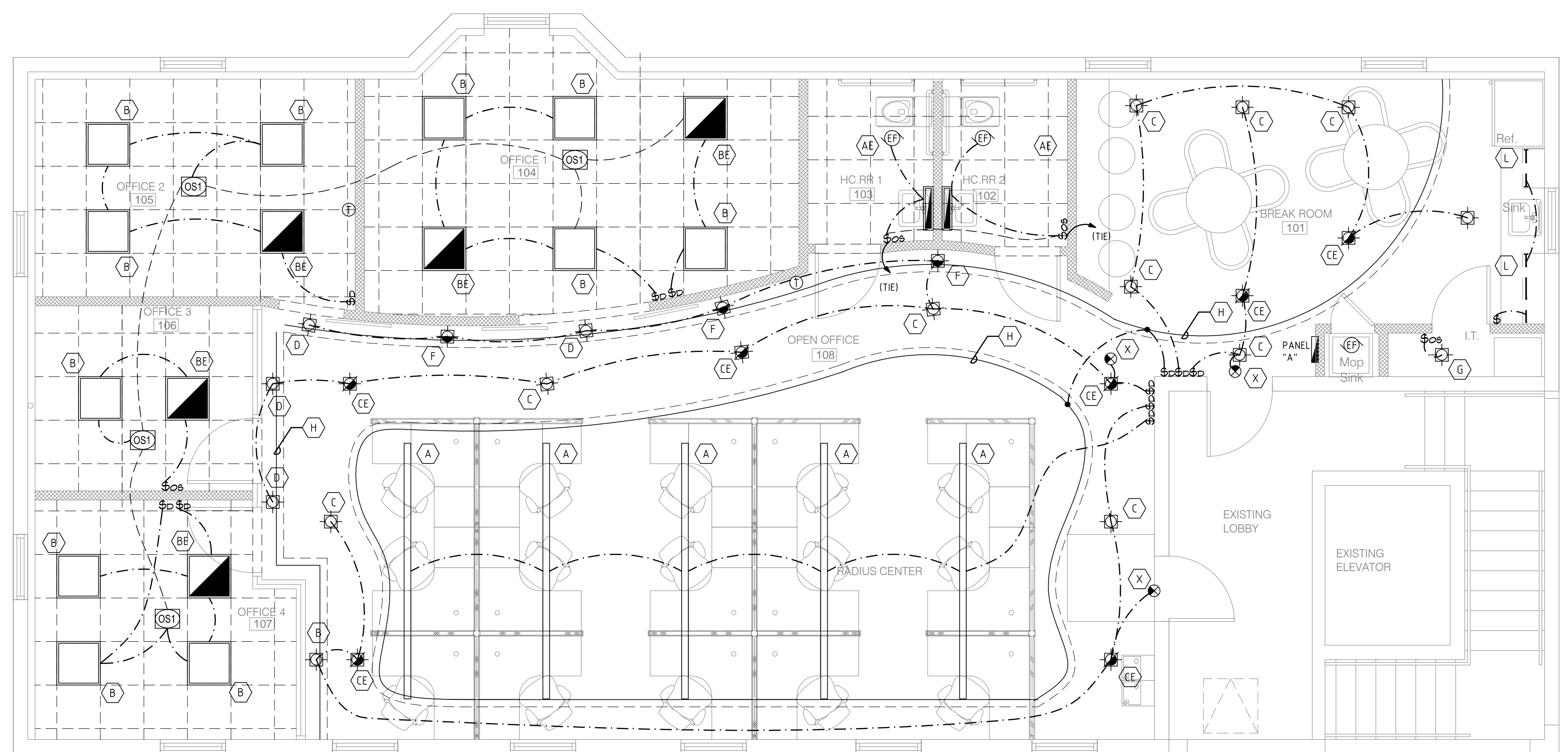


LEVEL 2 ALTERATION  
 TENANT BUILD-OUT FOR:  
**SF PROCESSING**  
 1315 N. FEDERAL HWY. 2ND FLOOR  
 BOYNTON BEACH, FL. 33435

JOHN SHERMAN REED  
 ARCHITECT  
 FL LICENSE# AR9571

JSR DESIGN GROUP INC.  
 AN26002033 970 SW 4TH STREET  
 BOCA RATON, FL 33486  
 PH: 561-362-7203  
 FAX: 561-362-7204



ELECTRICAL LIGHTING PLAN  
 SC: 1/4" = 1'-0"

LIGHTING FIXTURE SCHEDULE									
TYPE	DESCRIPTION	MANUFACTURER	CATALOG NUMBER	VOLT	# LAMPS	LAMP TYPE	INPUT WATTS	MOUNTING	REMARKS
A	11'9" LINEAR TRIMLESS RECESSED LED	FINELITE	HP-4R-141'-HO-3500K-F-SC-SF	120	---	LED 3500K	109W	RECESS	
B	2' X 2' ARCHITECTURAL LED	DAYBRITE	2CAG38L835-2-DS-UNV-DM	120	---	LED 3500K	41.6W	RECESS	
BE	2' X 2' ARCHITECTURAL LED WITH EMERGENCY BATTERY	DAYBRITE	2CAG38L835-2-DS-UNV-DM-EM-LED	120	---	LED 3500K	41.6W	RECESS	
C	4' LED DOWNLIGHT	LIGHTOLIER	P4RD20NZ10V/B/P4RD835V/B/P4RDCC	120	---	LED 3500K	25.4W	RECESS	
CE	4' LED DOWNLIGHT WITH EMERGENCY BATTERY	LIGHTOLIER	P4RD20NZ10V/BEM/P4RD835V/B/P4RDCC	120	---	LED 3500K	25.4W	RECESS	
D	2' LED DOWNLIGHT	LITON	LHBLD212C35UE-D10/LRLH21C-T35	120	---	LED 3500K	10W	RECESS	
F	2' LED WIDE FLOOD DOWNLIGHT	LITON	LHBLD212C35UE-D10/LRLH21C-B60-T35	120	---	LED 3500K	10W	RECESS	
G	7" LED SLM SURFACE DOWNLIGHT	LIGHTOLIER	S7R835K10	120	---	LED 3500K	14.2W	SURFACE	
H	12" LED COVE LIGHT	SSL	ECVLX1-30K-120	120	---	LED 3500K	5.5W/FT.	SURFACE	PROVIDE IN CONTINUOUS LENGTH AS SHOWN ON PLANS
KE	24" LED VANITY LIGHT	SCOTT	S3270-L16-30K-BA-EM	120	---	LED 3000K	16W	WALL SURFACE	
L	19" LED UNDERCABINET LIGHT	PHILIPS	523-000027-73	120	---	LED 3000K	13W	SURFACE	PROVIDE IN LENGTHS AS SHOWN ON THE PLANS
X	EDGE LIT EXIT SIGN	BEGHELLI	OL2-SA-LG-1/2-CM-CR-PLUS	120	---	LED	2W	CEILING RECESS	

PROGRESS OR CHECK SETS, BY THEIR NATURE, MAY BE INCOMPLETE AND ARE NOT TO BE USED FOR BIDDING OR CONSTRUCTION. CONTRACTOR RECOGNIZES HIS SOLE RESPONSIBILITY TO INCLUDE ALL CONTINGENCIES FOR DESIGN AND INSTALLATION TO MEET THE PROJECT REQUIREMENTS IN ANY PRICING EXERCISE.

PRIOR TO SUBMITTING THE BID, THE CONTRACTOR SHALL FIELD VERIFY ALL EXISTING CONDITIONS AND INFORM THE ARCHITECT AND THE ENGINEER OF ANY DISCREPANCY BETWEEN THESE DOCUMENTS AND THE EXISTING CONDITIONS AND SHALL INCLUDE IN THE BID TO CORRECT THE SAME AS DIRECTED. THE ENGINEER AND THE ARCHITECT, ARE NOT RESPONSIBLE FOR ANY ADDITIONAL COSTS RESULTING FROM VERIFIABLE EXISTING CONDITIONS DISCOVERED AFTER CONTRACT HAS BEEN AWARDED. NO CHANGES SHALL BE MADE TO THESE PLANS WITHOUT PRIOR APPROVAL FROM THE ENGINEER OF RECORD. ALL CHANGES SHALL BE SUBMITTED FOR REVIEW PRIOR TO INSTALLATION. NOT FOR BID UNTIL PERMIT HAS BEEN ISSUED.

CHECK SET: 02/22/16

**FAE CONSULTING**  
 700 WEST HILLSBORO BLVD. - BLDG. #1, SUITE 204  
 DEERFIELD BEACH, FLORIDA 33441  
 TEL: (561) 391-9292 FAX: (561) 391-9898  
 CERTIFICATE OF AUTHORIZATION NO. 28107  
 VIRSULA IARRATE, P.E. LICENSE #73122  
 STEPHEN F. ROLLIN, P.E. LICENSE #36428  
 DONALD H. AUSTIN, JR., P.E. LICENSE #6051  
 JASON BARBER, P.E. LICENSE #73050  
 E-MAIL: INFO@FAECONSULTING.COM  
 DESIGNED BY: KW/AS PM: AN P/N 16014

16014

E2.1

- All designs and concepts are the property of JSR Design Group Inc., and may not be modified or copied without written permission by the architect.
- Contractor to verify all written dimensions (Not scaled) & notify architect of any discrepancies or omissions. Construction shall not proceed until said discrepancies or omissions have been resolved by architect.
- Contractor to verify and approve all shop drawings and dimensions before having drawings reviewed and accepted by the architect prior to construction.