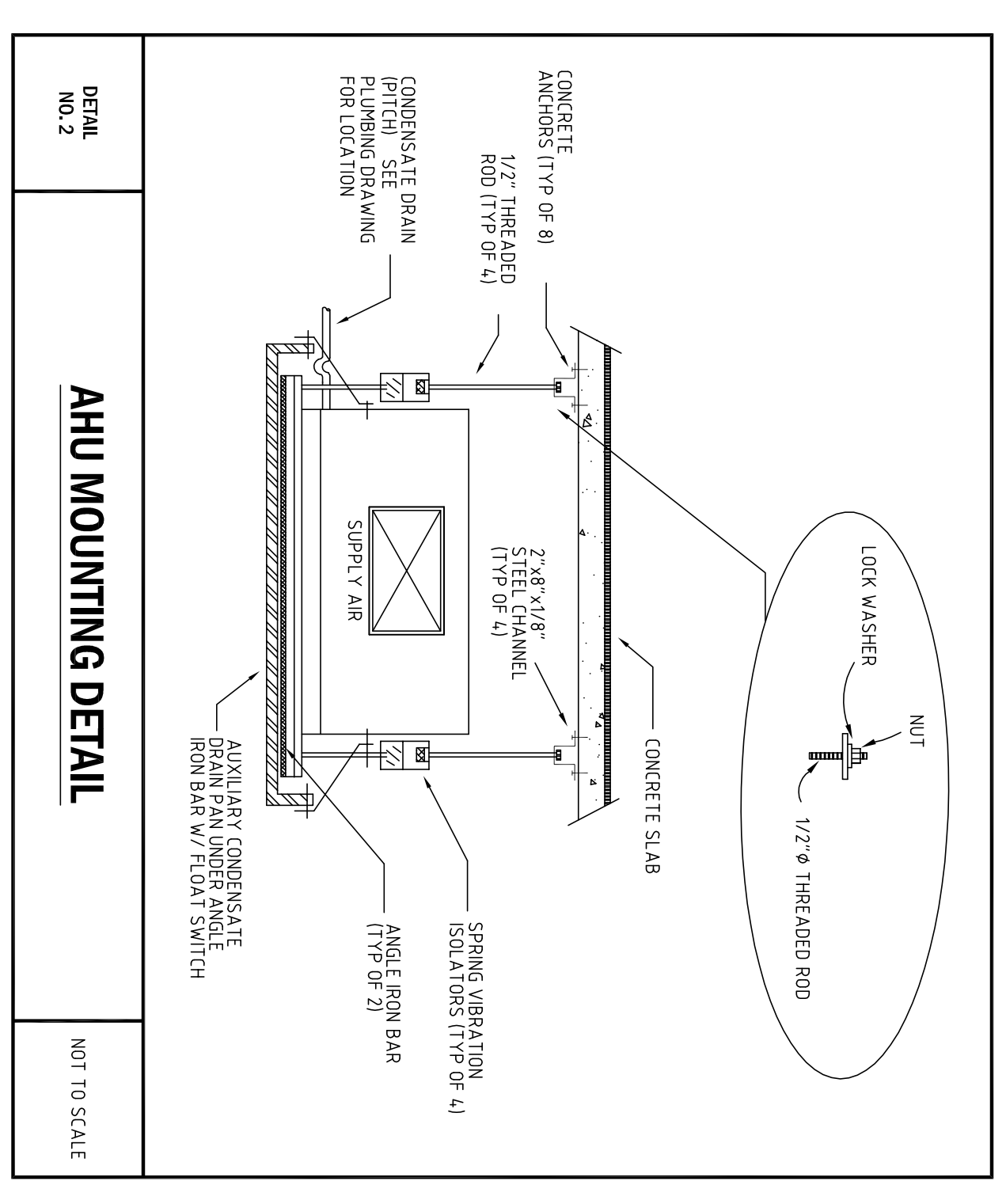
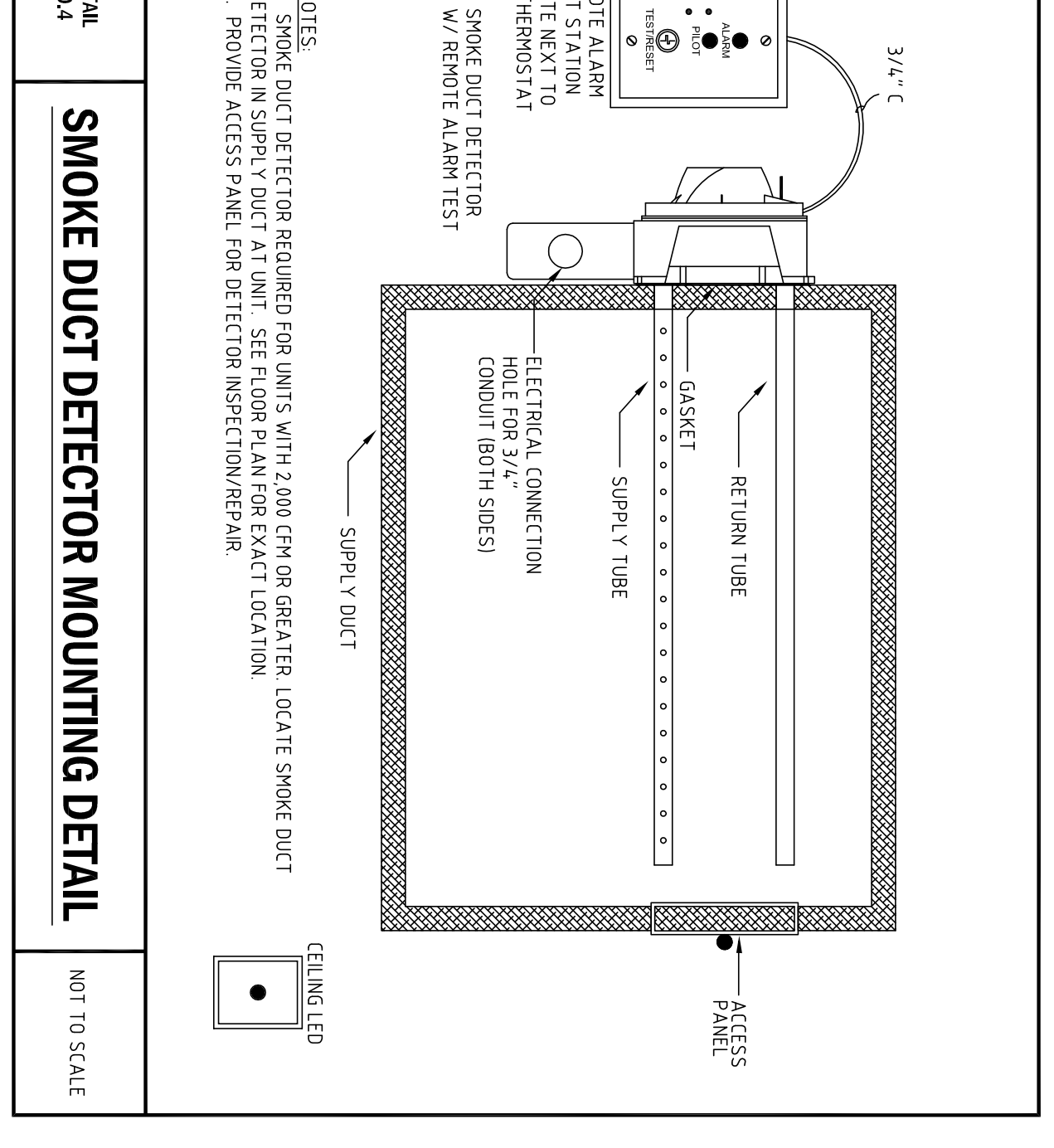


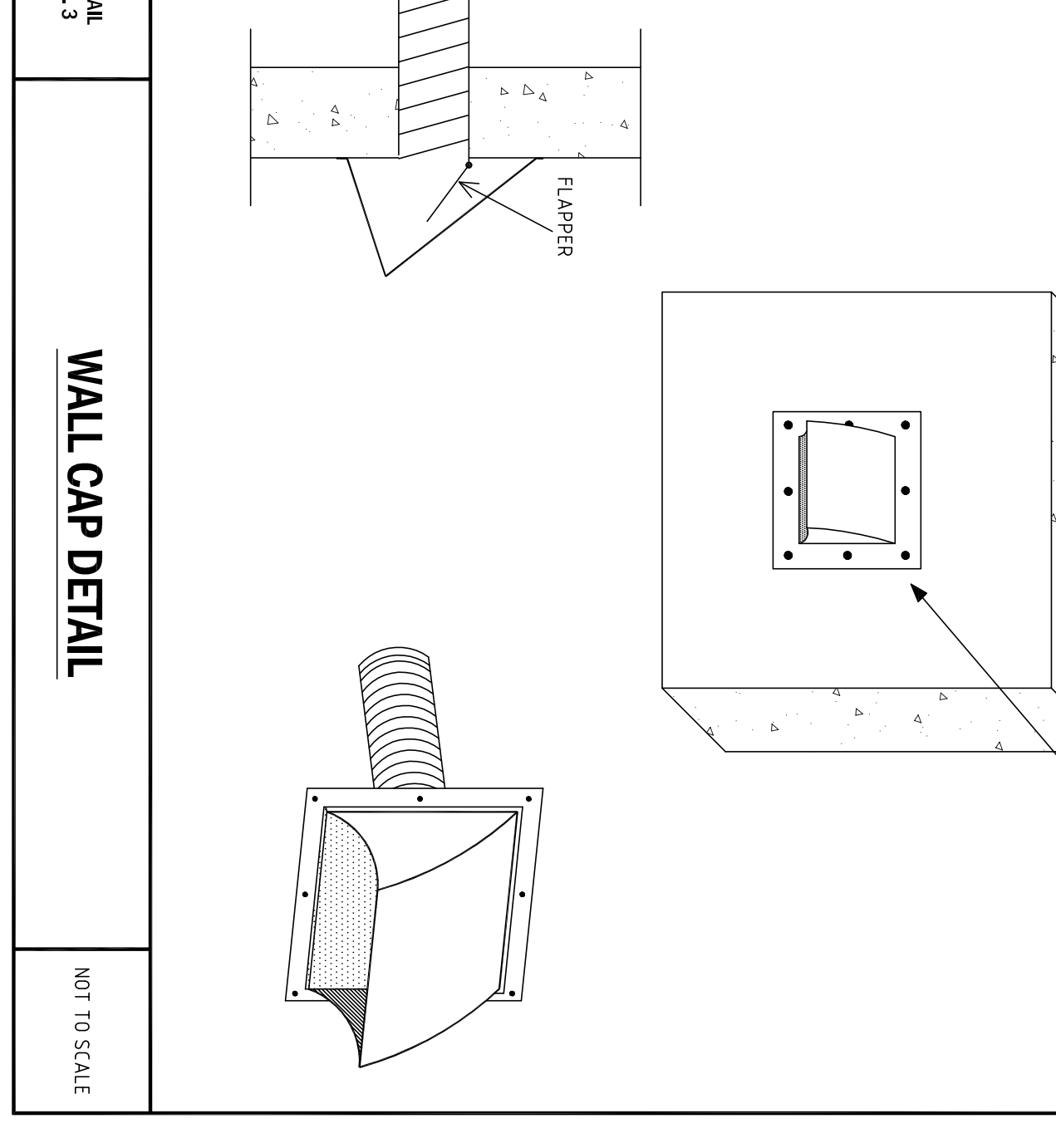
**HANGING CU DETAIL**  
NOT TO SCALE



**AHU MOUNTING DETAIL**  
NOT TO SCALE



**SMOKE DUCT DETECTOR MOUNTING DETAIL**  
NOT TO SCALE



**WALL CAP DETAIL**  
NOT TO SCALE

**AIR CONDITIONING DATA**

QTY	UNIT NO.	MFG.	CONDENSING UNIT		AIR HANDLED UNIT		COOLING BTUH		SEER	TOTAL	CFM		HEAT SENSIBLE	SECTION & LOAD LINES
			MODEL NO.	QTY	MODEL NO.	QTY	FLA	FLA			HP	FLA		
5 TON	AHU-1	CARRIER	Z4AB36A005	1	FXDNR661100	1	14	3/4	13.5	2000	-	30A	53.8A	1-7/8" - 3/8"
5 TON	AHU-2	CARRIER	Z4AB36A005	1	FXDNR661100	1	14	3/4	13.5	2000	-	30A	53.8A	1-7/8" - 3/8"
5 TON	AHU-3	CARRIER	Z4AB36A005	1	FXDNR661100	1	14	3/4	13.5	2000	-	30A	53.8A	1-7/8" - 3/8"

**ELECTRICAL DATA**

UNIT NO.	V/P/Hz	COMPRESSOR	FLA	LRB	QTY	FLA	HP	FLA	ELECTRIC HEAT	MIN CAPACITY	CONDENSING UNIT	MAX FUSE	MIN CAPACITY	AIR HANDLER UNIT	MAX FUSE
AHU-1	208/21/60	CU-1	7.6	10.0	1	14	3/4	6.0	10 KW	2140A	30A	53.8A	30A	53.8A	60A
AHU-2	208/21/60	CU-2	7.6	10.0	1	14	3/4	6.0	10 KW	2140A	30A	53.8A	30A	53.8A	60A
AHU-3	208/21/60	CU-3	7.6	10.0	1	14	3/4	6.0	10 KW	2140A	30A	53.8A	30A	53.8A	60A

**A/C EQUIPMENT NOTES:**  
 1) VERIFY ALL A/C ELECTRICAL REQUIREMENTS WITH MANUFACTURERS SPEC. PRIOR TO INSTALLATION.  
 2) PROVIDE R-410A REFRIGERANT.  
 3) PROVIDE DIGITAL CONTROL PROGRAMMABLE THERMOSTATS.  
 4) PROVIDE PULL DISCONNECTS (FUZED).  
 5) REFRIGERANT LINE SIZE BASED ON 0-80 FT. TOTAL EQUIVARIANT LENGTH.

**AIR CONDITIONING SPECIFICATION**

**GENERAL**

- DRAWINGS ARE DIAGNOSTIC. DO NOT SCALE DRAWINGS FOR THE EXACT LOCATION OF EQUIPMENT.
- PIPING, DUCT WORK, ETC. SHALL BE INSTALLED IN ACCORDANCE WITH THE MANUFACTURER'S INSTALLATION INSTRUCTIONS AND SHALL BE FULLY TESTED AND COMMISSIONED BY A LICENSED CONTRACTOR IN A FIRST CLASS WORKMANLIKE MANNER.
- THE COMPLETED SYSTEM SHALL BE FULLY OPERATIVE AND ACCEPTANCE BY ENGINEER/ARCHITECT MUST BE A CONDITION OF THE SUB-CONTRACT.
- CONTRACTOR SHALL PAY FOR ALL PERMITS, FEES, INSPECTIONS, AND TESTS.
- CONTRACTOR SHALL VISIT THE JOB SITE AND THROUGHLY FAMILIARIZE HIMSELF WITH ALL EXISTING CONDITIONS.
- ALL WORK SHALL BE COORDINATED WITH OTHER TRADES TO AVOID INTERFERENCE WITH THE PROCESS OF CONSTRUCTION.
- ALL REQUIRED INSURANCE SHALL BE PROVIDED BY THE CONTRACTOR FOR PROTECTION AGAINST PUBLIC LIABILITY AND PROPERTY DAMAGE FOR THE DURATION OF THE WORK.
- ALL WORK SHALL BE IN STRICT ACCORDANCE WITH APPLICABLE NATIONAL, STATE AND LOCAL CODES, RULES AND ORDINANCES.
- ALL MATERIALS SHALL BE NEW AND SHALL BEAR UNDERWRITERS LABEL WHERE APPLICABLE.
- THE MECHANICAL CONTRACTOR SHALL PROVIDE A WRITTEN WARRANTY THAT SHALL GUARANTEE ALL WORKMANSHIP AND MATERIALS FOR ONE YEAR FROM THE DATE OF FINAL WORK ACCEPTANCE. EQUIPMENT SHALL BE U.L. APPROVED.
- CONTRACTOR SHALL BE RESPONSIBLE FOR OBTAINING ALL NECESSARY PERMITS AND INSURANCE REQUIRED BY THE CONTRACTOR. SHALL BE PAID FOR BY THE CONTRACTOR.

**INSTALLATION**

- THE MECHANICAL CONTRACTOR SHALL PROVIDE HVAC EQUIPMENT AS SCHEDULED WITH THE CAPACITIES SHOWN ON THE DRAWINGS.
- THE MECHANICAL CONTRACTOR SHALL PROVIDE MOTOR STARTERS, RELAYS, CONTRACTORS, SMOKE DUCT DETECTORS, ETC.
- THE ELECTRICAL CONTRACTOR SHALL PROVIDE ALL SWITCHES AND INSTALL ALL CONTROL WIRING.
- ALL A/C UNIT SUPPLY AND RETURN AIR DUCTS SHALL BE R-4 JOINTS MANVILLE MAT-FACED MICRO-ANE FIBERGLASS DUCT BOARD TYPE 800 (UL APPROVED). INSTALLED PER MANUFACTURERS INSTRUCTIONS.
- ALL DUCTWORK SHALL CONFORM TO S.M.A.C.N.A. STANDARDS. ALL DUCTWORK SIZES ARE NET INSIDE DIMENSIONS.
- ALL A/C SUPPLY DUCT ELBOWS MUST BE FINISHED WITH APPROVED TURNING VANES.
- BRANCH TAKEOFFS MUST BE PROVIDED WITH APPROVED ADJUSTABLE ACCESSIBLE AIR SPLITTER DAMPERS.
- ROUND DUCT ELBOWS SHALL HAVE AN INSIDE RADIUS NOT LESS THAN 1.5 TIMES THE WIDTH OF THE DUCT.
- ALL EXHAUST AND OUTSIDE AIR DUCTWORK SHALL BE GALVANNEED SHEET METAL AND EXTERIOR SURFACES SHALL BE 7" THICK, RIGID ON INTERIOR AND INSTALLED IN AN APPROVED MANNER.
- SMOKE DUCT DETECTORS SHALL BE PER SPECIFIED ON PLANS. REFRIGERANT PIPING TO BE TYPE "M" COPPER.
- STUBS FOR CONDENSATE DRAIN PIPING SHALL BE APPROVED EQUAL, UNLESS OTHERWISE NOTED.
- CONNECT CONDENSATE DRAIN PIPING FROM UNIT THROUGH A TRAP TO CONDENSATE DRAIN PIPING CONTRACTOR MAY INSTALL DRAIN WITHIN 6 FEET OF UNIT IF CONTRACTOR TO DO SO.
- SET AIR CONDITIONING HANDLER AND CONDENSATE UNITS ON APPROVED BAYS WITH VIBRATION ISOLATORS.
- ALL OUTDOOR AIR INTAKES SHALL BE SCREENED WITH A CORROSION-RESISTANT MATERIAL NOT LARGER THAN 1/4" MESH.
- THERMOSTATS 5"-8" ABOVE FLOOR, UNLESS NOTED OTHERWISE.
- THERMOSTATS FOR A/C UNIT SHALL BE HEAT/COOL AND FAN/AUTO/ON SWITCHED AND SHALL BE APPROVED BY EQUIPMENT MANUFACTURER.
- FINISH AND INSTALL ALL TEMPERATURE CONTROLS UNDER THIS CONTRACT, INCLUDING HUMIDITY CONTROLS WHERE APPLICABLE. SHALL BE INSTALLED IN ALL DUCTS PENETRATING FIRE RATED ROOFS AND CEILINGS AND WHERE REQUIRED BY CODES. PROVIDE ACCESS DOORS AT EACH FIRE DAMPER LOCATION.

**MARRANILLES**

- CORRECTION OF ANY DEFECTS SHALL BE COMPLETED WITHOUT ADDITIONAL CHARGE AND SHALL INCLUDE RE-ACCEPTANCE OR REPAIR OF ANY OTHER PHASE OF THE INSTALLATION WHICH MAY HAVE BEEN DAMAGED HEREBY.
- THE CONTRACTOR SHALL ADJUST, TEST AND BALANCE ALL SYSTEMS, BALANCED AIR FLOWS WITHIN 10 PERCENT OF THE DESIGN VALUES. SUBMIT COPY OF WORKSHEET TO ENGINEER/ARCHITECT.

**NOTES**

- RIGID DUCTWORK TO BE CERTAINTED, TONGUE&GROOVE IN KITCHEN AREA.
- FLEXIBLE DUCT WORK OVER 10 FT. SHALL BE SPI-RIGID ROUND FIBERGLASS DUCT.
- INSULATE O/A AND EXHAUST DUCT WHEN THEY ARE IN AIR CONDITIONING SPACE.

**MECHANICAL DETAILS, DATA & SPECS**  
NOT TO SCALE

**CHECK SET: 03/11/15**

NOTE: ANY DESIGN CHANGES TO THE SYSTEM COVERED BY THESE MECHANICAL DRAWINGS SHALL BE MADE BY THE ENGINEER WHO REBARED THESE PLANS. WILL NOT BE MADE BY THE CONTRACTOR. ALL CHANGES MUST BE IN WRITING AND ALL CHANGES TO THE ORIGINAL DESIGN WILL BE THE RESPONSIBILITY OF THE COMPANY WHICH APPROVED THESE CHANGES. FINAL BID TO INCLUDE PERMIT COMMENTS.

**FORMICCA & ASSOCIATES, Inc.**  
Consulting Engineers

3600 N.W. Boca Raton Blvd.  
Suite #711  
Boca Raton, FL 33431  
TEL: (561) 366-3611 FAX: (561) 366-4733  
Robert F. Formica, P.E., License #19733  
Email: bob@formiccaengineering.com

TO THE BEST OF MY KNOWLEDGE, THE PLANS AND SPECIFICATIONS COMPLY WITH THE APPLICABLE REGULATORY REQUIREMENTS AND I AM NOT PROVIDING ANY WARRANTIES, EXPRESS OR IMPLIED, AS TO THE ACCURACY, COMPLETENESS, OR QUALITY OF THE INFORMATION OR DATA PROVIDED HEREON. I AM NOT PROVIDING ANY WARRANTIES, EXPRESS OR IMPLIED, AS TO THE ACCURACY, COMPLETENESS, OR QUALITY OF THE INFORMATION OR DATA PROVIDED HEREON.

Architectural Seal