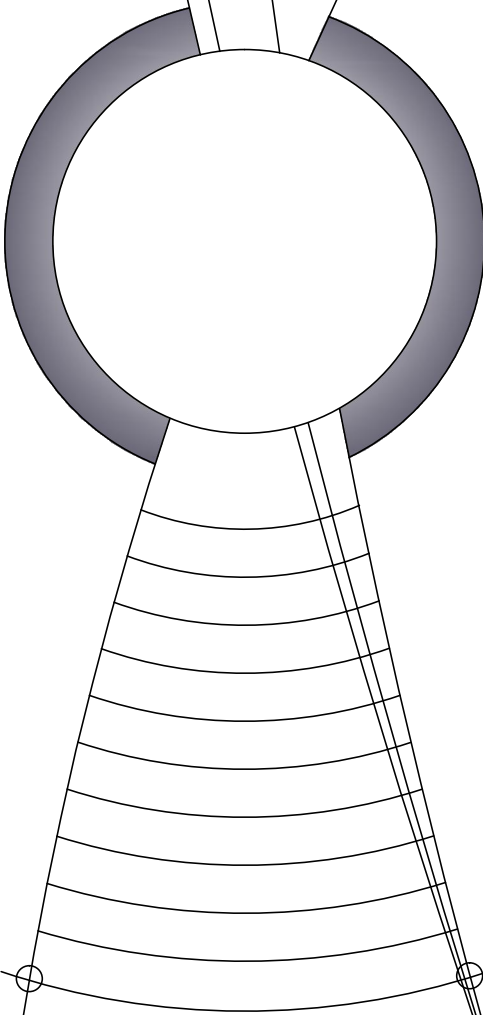




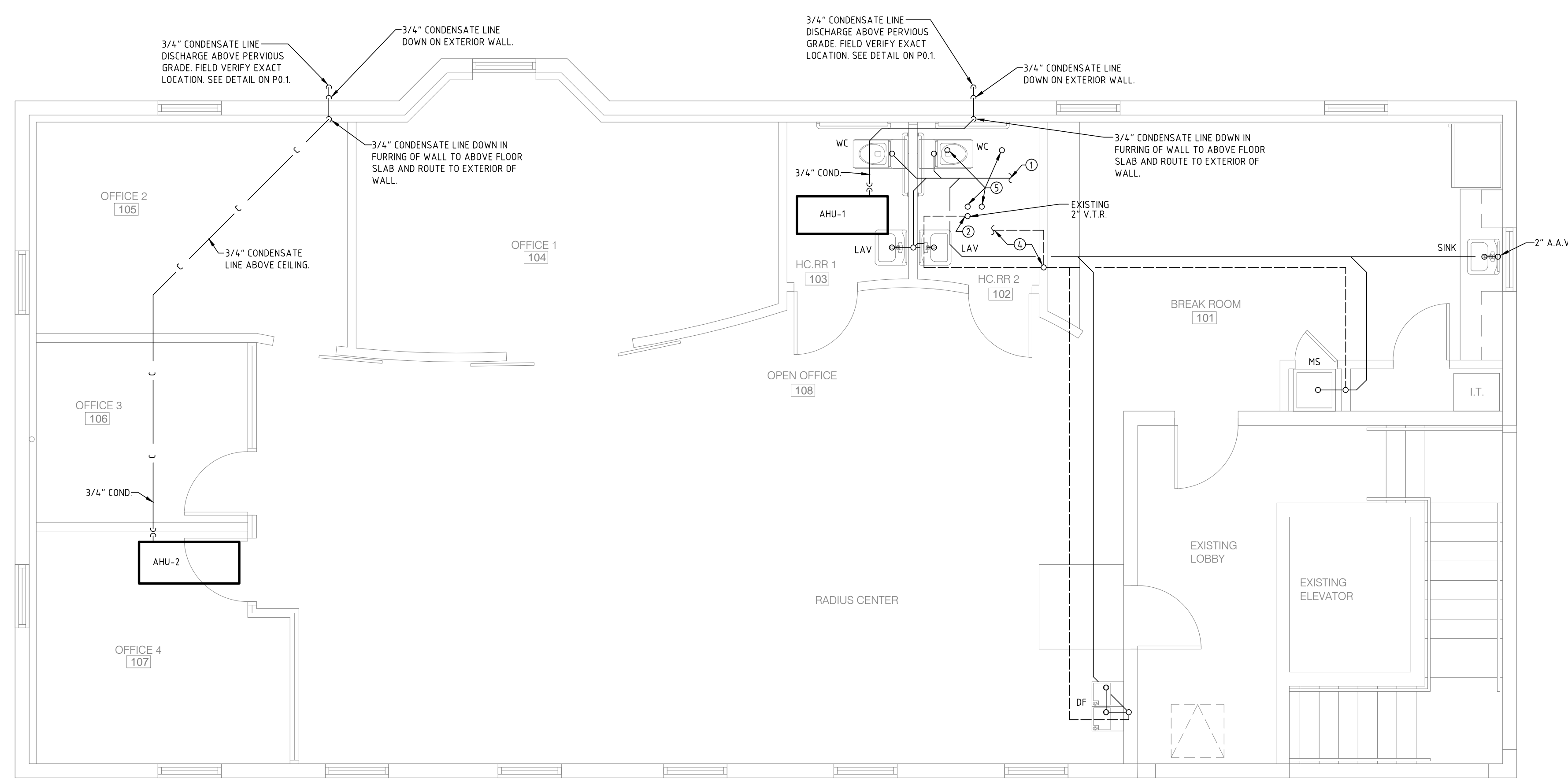
LEVEL 2 ALTERATION
 TENANT BUILD-OUT FOR:
SF PROCESSING
 1315 N. FEDERAL HWY. 2ND.FLOOR
 BOYNTON BEACH, FL. 33435

JOHN SHERMAN REED
 ARCHITECT
 FL LICENSE# AR9571

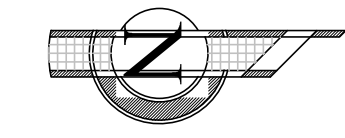
JSR DESIGN GROUP INC.
 970 SW 4TH STREET
 BOCA RATON, FL 33486
 AA26002033 PH: 561-362-7203
 FAX: 561-362-7204



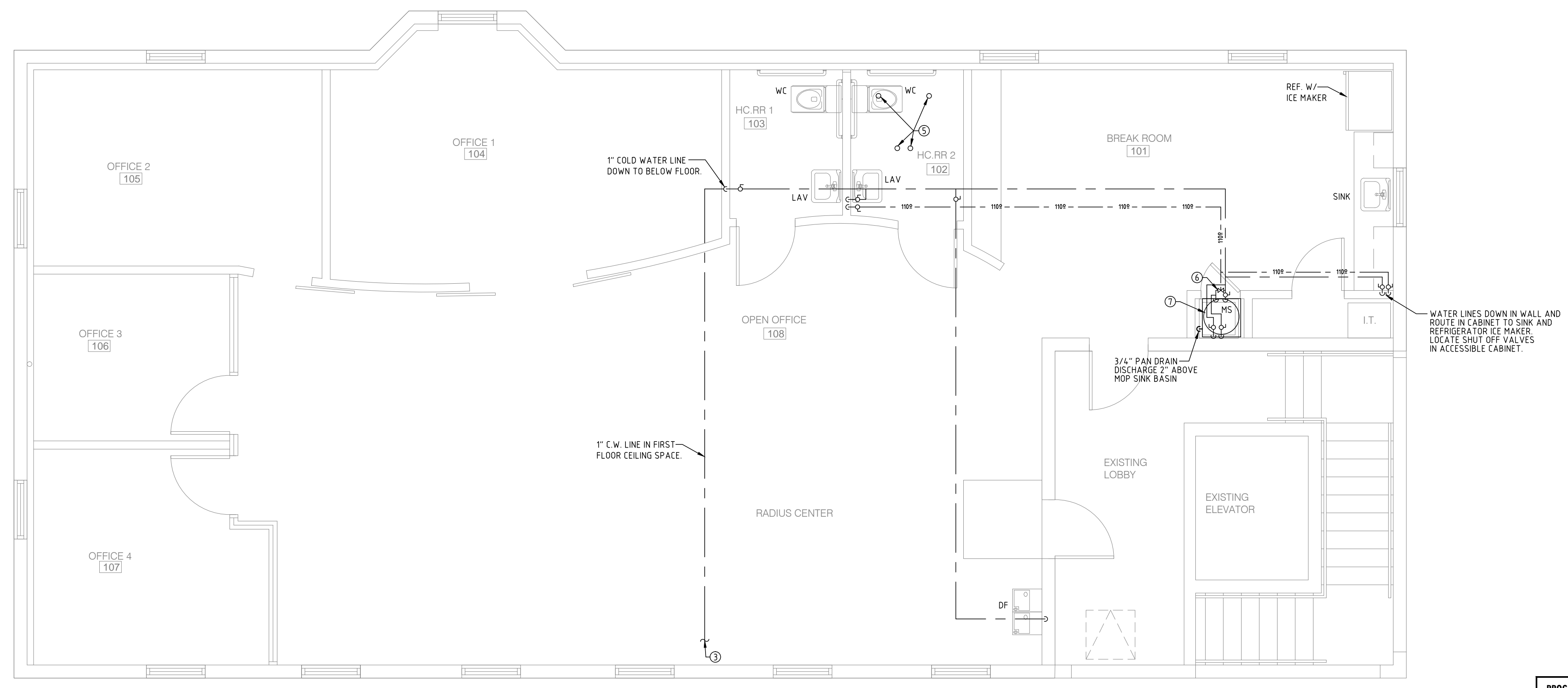
- All designs and concepts are the property of JSR Design Group Inc. and may not be modified or copied without written permission by the architect.
- Contractor to verify all written dimensions (Not scaled) & notify architect of any discrepancies or omissions. Construction shall not proceed until said discrepancies or omissions have been resolved by architect.
- Contractor to verify and approve all shop drawings and dimensions before having drawings reviewed and accepted by the architect prior to construction.



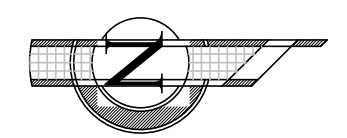
PLUMBING FLOOR PLAN - SANITARY
 SC: 1/4" = 1'-0"



- | PLUMBING KEY NOTES | |
|--------------------|--|
| ① | CONNECT NEW 3" SANITARY LINE TO EXISTING 3" SANITARY LINE BELOW FLOOR IN THIS AREA. VERIFY EXACT LOCATION, SIZE, INVERT, DIRECTION OF FLOW & CONNECTION POINT IN FIELD PRIOR TO CONSTRUCTION. |
| ② | CONNECT NEW 2" VENT LINE TO EXISTING 2" VENT LINE ABOVE CEILING IN THIS AREA. VERIFY EXACT LOCATION, SIZE, & CONNECTION POINT IN FIELD PRIOR TO CONSTRUCTION. |
| ③ | CONNECT NEW 1" COLD WATER LINE TO EXISTING 1-1/2" COLD WATER LINE BELOW FLOOR IN THIS AREA. VERIFY EXACT LOCATION, SIZE & CONNECTION POINT IN FIELD PRIOR TO CONSTRUCTION. IF EXISTING PIPING IS NOT LARGE ENOUGH CONTRACTOR TO UPGRADE WATER SERVICE AS REQUIRED TO ACCOMMODATE NEW LOAD. |
| ④ | NEW 2" VENT LINE DOWN IN WALL AND RE-CONNECT TO EXISTING 2" VENT LINE BELOW FLOOR IN THIS AREA. FIELD VERIFY EXACT LOCATION. |
| ⑤ | EXISTING PLUMBING PIPING ABOVE FLOOR IN THIS AREA TO BE REMOVED AND CAPPED BELOW FLOOR IN FIRST FLOOR CEILING SPACE. FIELD VERIFY EXACT LOCATION. |
| ⑥ | PROVIDE MIXING VALVE THAT CONFORMS WITH ASSE 1070 TO TEMPER HOT WATER DOWN TO 110°F. |
| ⑦ | NEW ELECTRIC WATER HEATER LOCATED ON PLATFORM. SEE DETAIL ON SHEET P0.1. |



PLUMBING FLOOR PLAN - WATER
 SC: 1/4" = 1'-0"



PROGRESS OR CHECK SETS, BY THEIR NATURE, MAY BE INCOMPLETE AND ARE NOT TO BE USED FOR BIDDING OR CONSTRUCTION. CONTRACTOR RECOGNIZES HIS SOLE RESPONSIBILITY TO INCLUDE ALL CONTINGENCIES FOR DESIGN AND INSTALLATION TO MEET THE PROJECT REQUIREMENTS IN ANY PRICING EXERCISE.

PRIOR TO SUBMITTING THE BID, THE CONTRACTOR SHALL FIELD VERIFY ALL EXISTING CONDITIONS AND INFORM THE ARCHITECT AND THE ENGINEER OF ANY DISCREPANCY BETWEEN THESE DOCUMENTS AND THE EXISTING CONDITIONS AND SHALL INCLUDE IN THE BID TO CORRECT THE SAME AS DIRECTED. THE ENGINEER AND THE ARCHITECT, ARE NOT RESPONSIBLE FOR ANY ADDITIONAL COSTS RESULTING FROM VERIFIABLE EXISTING CONDITIONS DISCOVERED AFTER CONTRACT HAS BEEN AWARDED. NO CHANGES SHALL BE MADE TO THESE PLANS WITHOUT PRIOR APPROVAL FROM THE ENGINEER OF RECORD. ALL CHANGES SHALL BE SUBMITTED FOR REVIEW PRIOR TO INSTALLATION. NOT FOR BID UNTIL PERMIT HAS BEEN ISSUED.

CHECK SET: 02/22/16

<small>700 WEST HILLSBORO BLVD. - BLDG. #1, SUITE 204 DEERFIELD BEACH, FLORIDA 33441 TEL: (561) 391-9292 FAX: (561) 391-9998 CERTIFICATE OF AUTHORIZATION NO. 28107 VIRGILIA IARRATE, P.E. LICENSE #75122 STEPHEN F. ROLLIN, P.E. LICENSE #36428 DONALD H. AUSTIN, JR., P.E. LICENSE #60551 JASON BARBER, P.E. LICENSE #73050 E-MAIL: INFO@FAECORP.COM DESIGNED BY: KW/AS PM: AN P/N 16014</small>

16014

P1.1

X:\2016 Projects\JSR Group\16014_SF Processing\WEP\16-02-17_MM\16014_P1.1(3).dwg, 2/22/2016 4:08:09 PM, MWilliamson