


The seal is circular with a double-lined border. The outer ring contains the text "FARID ABUGATTAS" at the top and "PROFESSIONAL ENGINEER" at the bottom, separated by two stars. The inner circle contains the text "STATE OF FLORIDA" on the left and "LICENSE NO. 72471" on the right, separated by a single star.

P.L. CLASSIC
Structural Engineering



FARID ABUGATTAS, P.E.
STRUCTURAL ENGINEER
7318 TEXAS TRAIL
BOCA RATON, FLORIDA 33487
PHONE: (954) 661-7803 FAX: (561) 665-5438
P.E. LICENSE # 72471 CA#22407
WWW.PROJECTCLASSIC.COM
FARID@PROJECTCLASSIC.COM

12" KNOCK OUT BLOCK
W/ (1) #5 CONT.

FRAMING PLAN

#3 BARS $4" \times 2'-0"$ U.G.
CAST IN FLANGE @ $2'-0"$
LONG G.C. FOR BEND BARS
INTO FOUR W/ 180° BEND

DO NOT BACKFILL
UNTIL DTS
ARE COMPLETELY
INSTALLED

DOUBLE T
BARS
LAP
VARIES
MESH
W/ 180° FLANGE

POURED CONCRETE THE
BEAM SEE SCHEDULE

12" CMU WALL
W/ #1 LADDER
EVERY OTHER
COURSE

12" KNOCK OUT BLOCK
W/ (1) #5 CONT.

SECONDARY POUR

ANC. DOWELS PRE-SET
(BY OTHERS)
SEE ARCHING DWGS
FOR SIZE & PLACEMENT

DOUBLE T
BARS
5 $1/2" \pm$ 1" BRG.

POURED CONCRETE THE
BEAM SEE SCHEDULE

12" CMU WALL
W/ #1 LADDER
EVERY OTHER
COURSE

FRAMING PLAN

2	SECTION
S2	SCALE: 1/2" = 1'

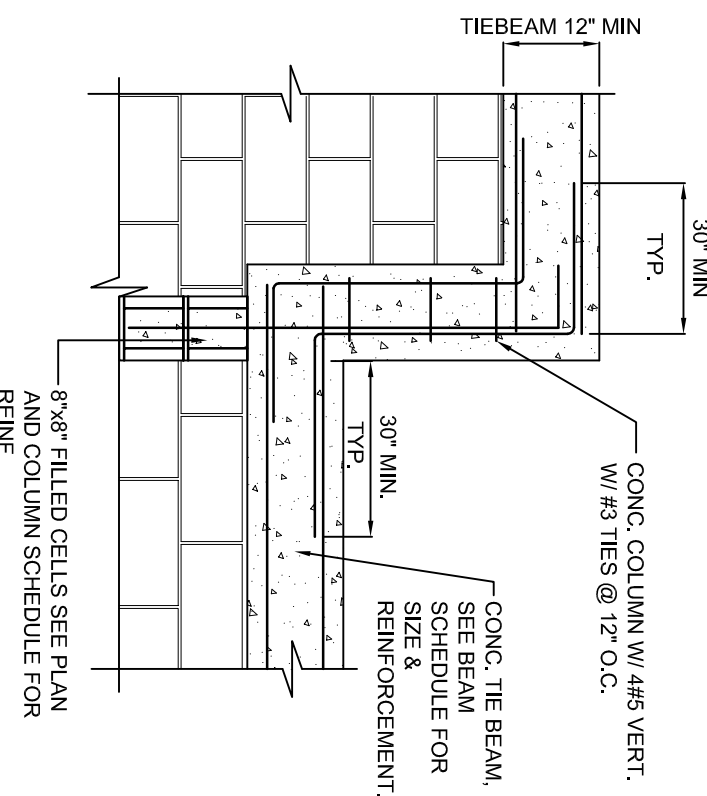
DEAD (120 PSF)	DOUBLE "T" = 80 PSF
	ROOFING = 25PSF
	DUCTS/PIPES/MISC = 15PSF
LIVE (30 PSF)	OCCUPANCY LIVE = 30 PSF

ROOF FRAMING PLAN

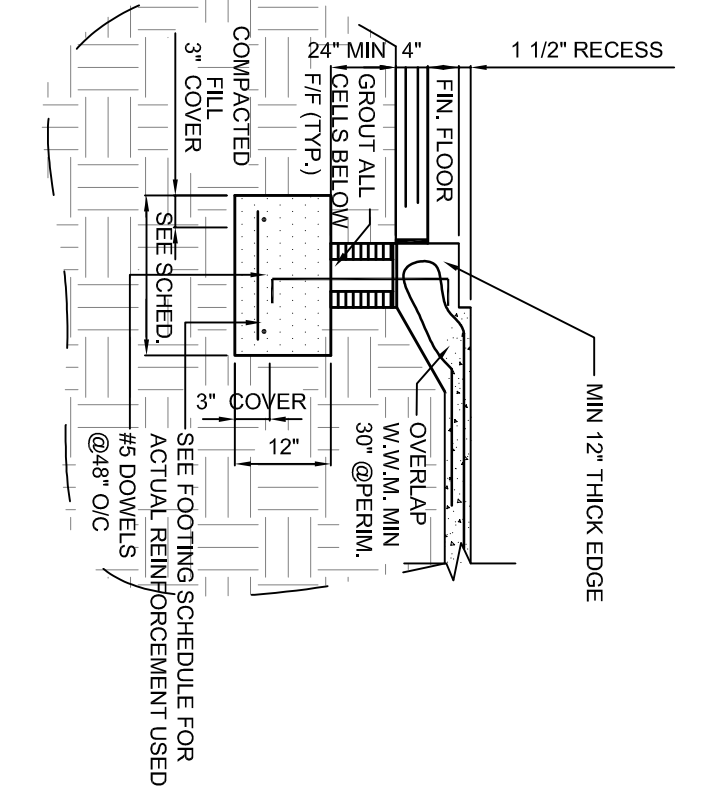
$\frac{3}{16} = 1'$

0' 4' 8' 12'

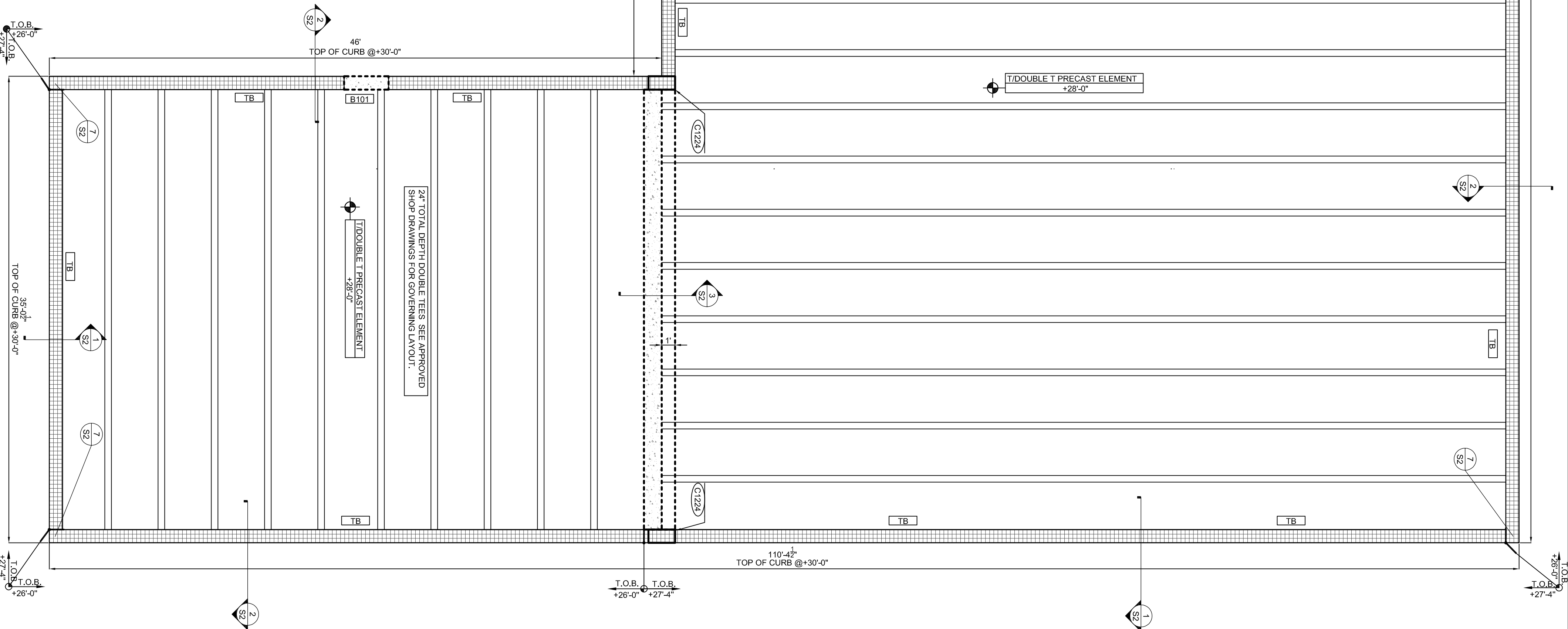
N



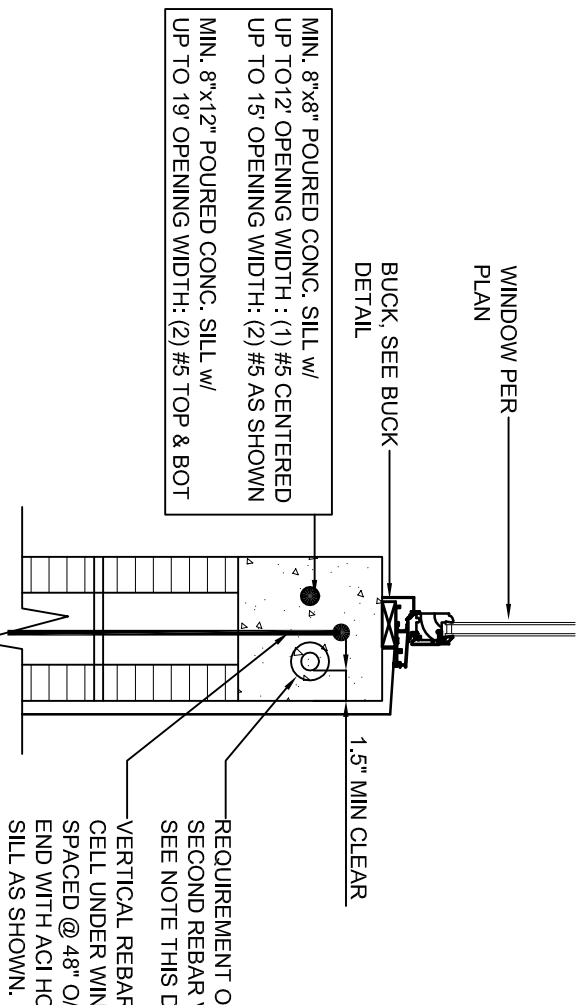
S2 SCALE: 1/2" = 1'



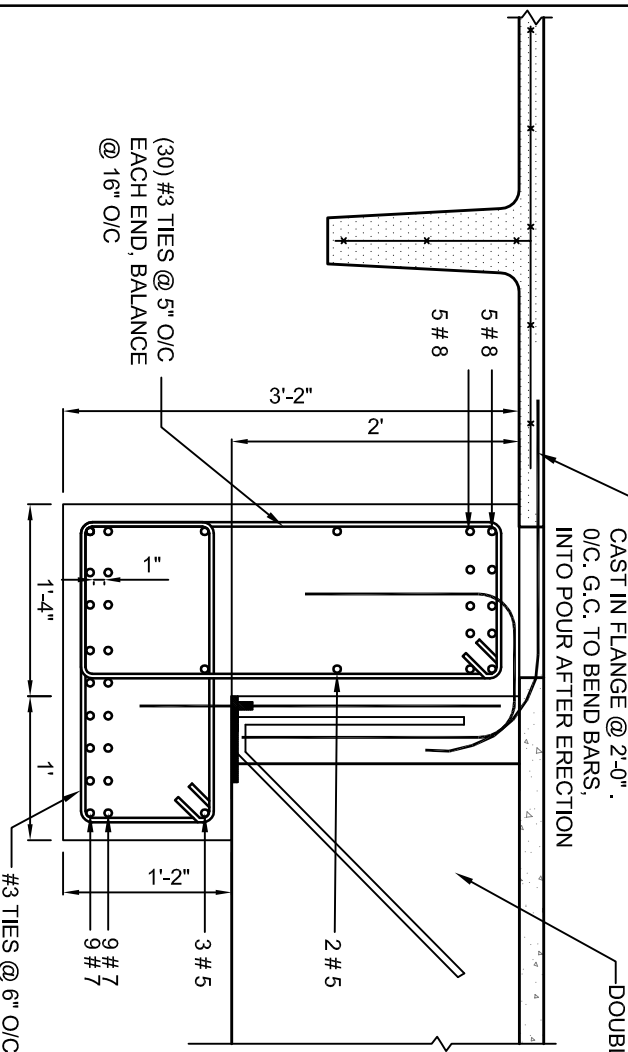
S2 SCALE: 1/2" = 1



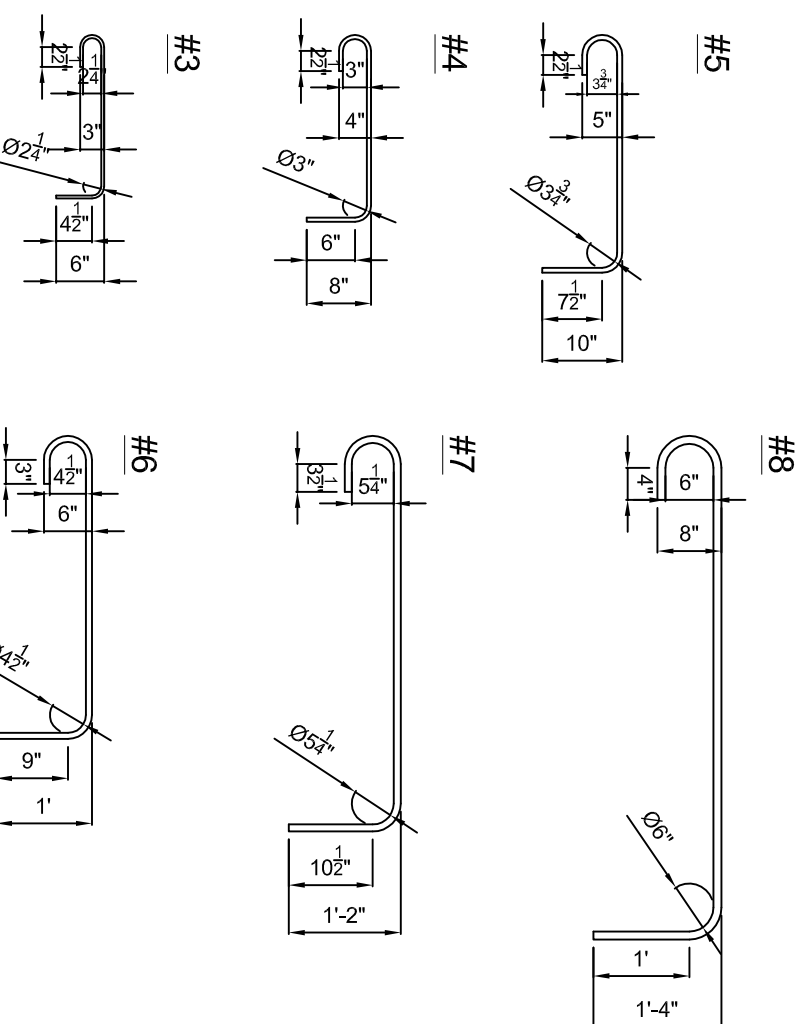
S2 SCALE: N.T.S.



S2 SCALE: 3/4" = 1'



S2 SCALE:N.T.S



S2 SCALE: 1/2" = 1'

