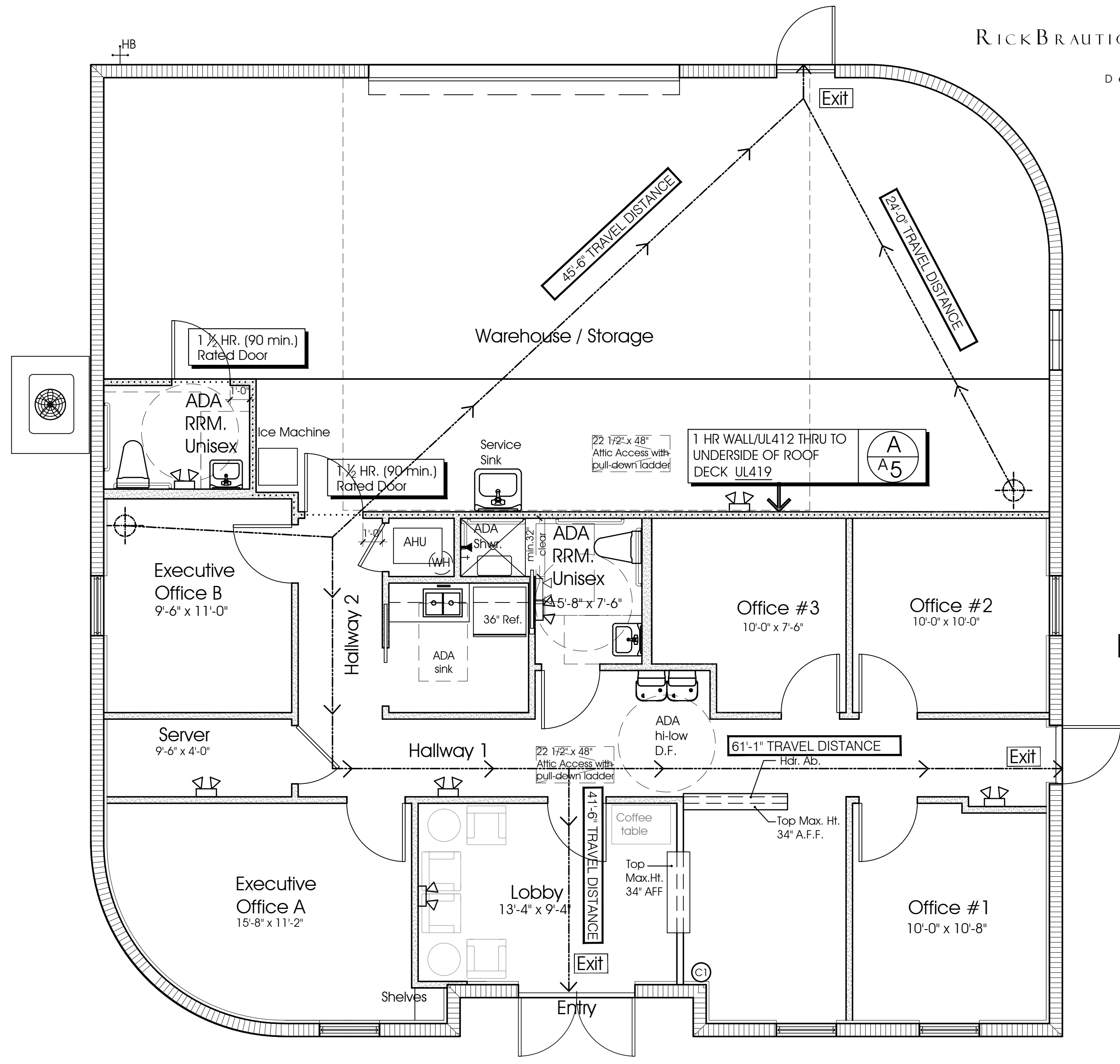


Reflected Ceiling Plan
 1/4" SC

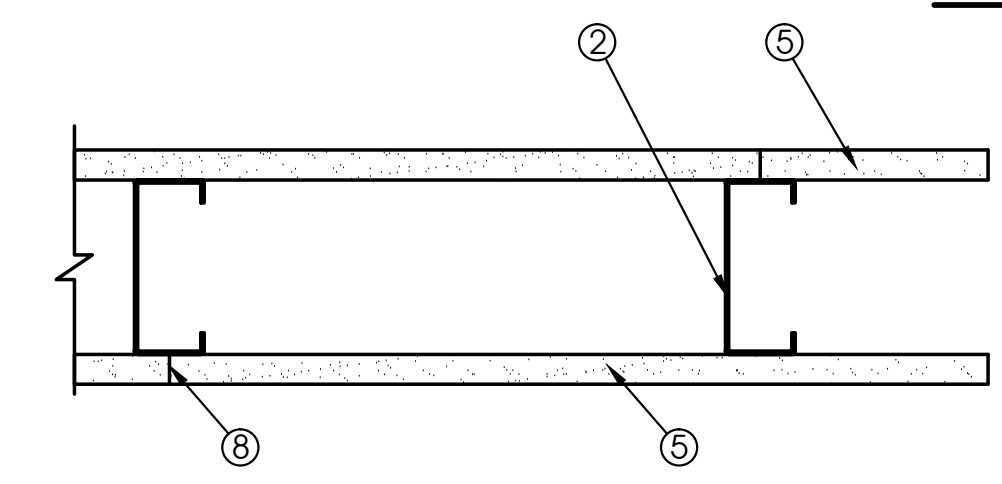
MARK	CEILING TYPE SCHEDULE	Finish
(Clg-1)	5/8" G.W.Bd. on 7/8" x 2 9/16" x 20 Ga. Furring "HAT" channels spaced at 16" o.c. perpendicular to Trusses.	Level IX
(Clg-2)	5/8" G.W.Bd. on Wood Roof Trusses	Level IX

Legend:

- Recessed light fixture (see electrical drawings for specifications).
- ⊕ Surface mounted light fixture (see electrical drawings for specifications).
- ⊕ Exterior wall sconce (see electrical drawings for specifications).
- Wall pack light - See Photometrics Plan for specifications
- ⊕ Surface mounted exit sign (see electrical drawings for specifications).
- ⊕ Surface mounted exhaust fan (see electrical drawings for specifications).
- ⊕ Emergency Lighting
- ⊕ Surf Mtd. fluorescent (see electrical drawings for specifications).



Life Safety Plan
 1/4" SC



System Description:

- 2 Steel Studs - Channel shaped, fabricated from min 25 MSG corrosion - protected steel, min depth as indicated under item 5, spaced a max of 24 in. oc. studs to be cut 1/8" to 1/2" in. less than assembly height.
- 3 Gypsum panels with beveled, square or tapered edges, applied vertically or horizontally. Vertical joints centered over studs and staggered one stud cavity on opposite sides of studs. Vertical joints in adjacent layers (multilayer systems) staggered one stud cavity. Horizontal joints need not be backed by steel framing. Horizontal edge joints and horizontal butt joints on opposite sides of studs need not be staggered. Horizontal edge joints and horizontal butt joints in adjacent layers (multilayer systems) staggered a min of 12 in. The thickness and number of layers for the 1 hr, 2 hr, 3 hr and 4 hr ratings
- 4 Joint Tape and Compound - Vinyl or casein, dry or premixed joint compound applied in two coats to joints and screw heads of outer layers. Paper tape, nom 2 in. wide, embedded in first layer of compound over all joints of outer layer panels. Paper tape and joint compound may be omitted when gypsum panels are supplied with a square edge.

Fire System Rated UL Design (U419)
 N.T.S.



Reflected Ceiling Plan
 Life Safety Plan
 1/4" SC

ALL LEGENDS, CONCEPTS, AND IDEAS CONTAINED AND REPRESENTED HEREIN ARE THE PROPERTY OF RICK BRAUTIGAN ARCHITECTURE, INC. AND MAY NOT BE ALTERED, CHANGED, MODIFIED OR COPIED WITHOUT THE PERMISSION OF RICK BRAUTIGAN ARCHITECTURE, INC. EXPRESSED IN WRITING. 1. DRAWINGS ARE NOT TO BE SCALED. WRITTEN DIMENSIONS HAVE PRECEDENCE OVER ALL SCALED DIMENSIONS. 2. CONTRACTOR TO VERIFY ALL DIMENSIONS AND ADVISE ARCHITECT OF ANY DISCREPANCIES. CONSTRUCTION SHALL NOT PROCEED UNTIL SAID DISCREPANCIES HAVE BEEN RESOLVED. 3. NO MATERIALS OR SYSTEMS ARE TO BE FABRICATED UNTIL: A) ALL DIMENSIONS HAVE BEEN VERIFIED BY CONTRACTOR B) SHOP DRAWINGS HAVE BEEN REVIEWED AND ACCEPTED BY THE ARCHITECT