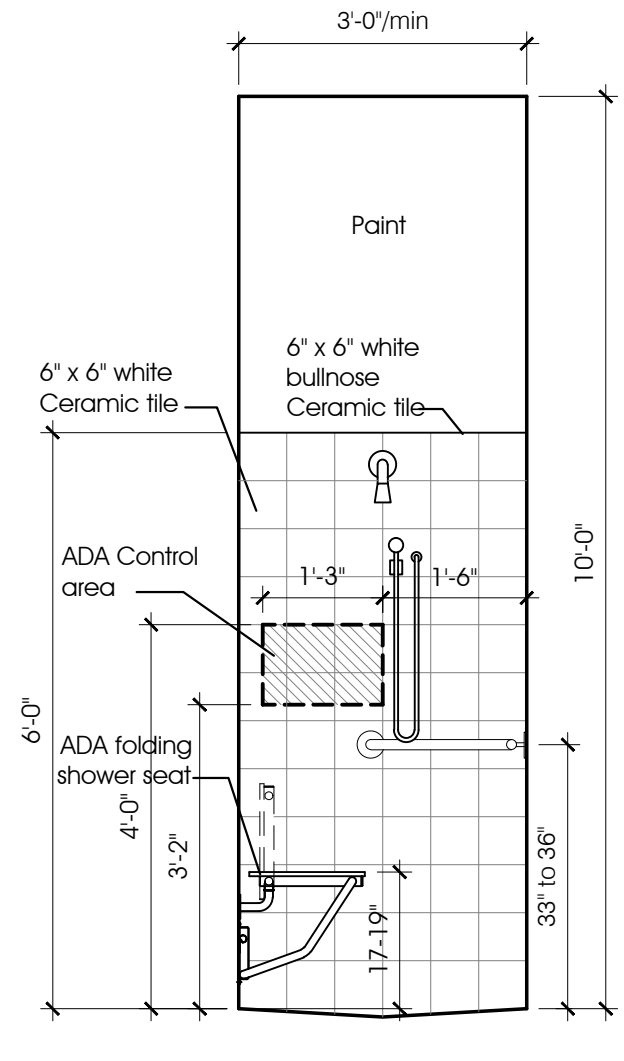
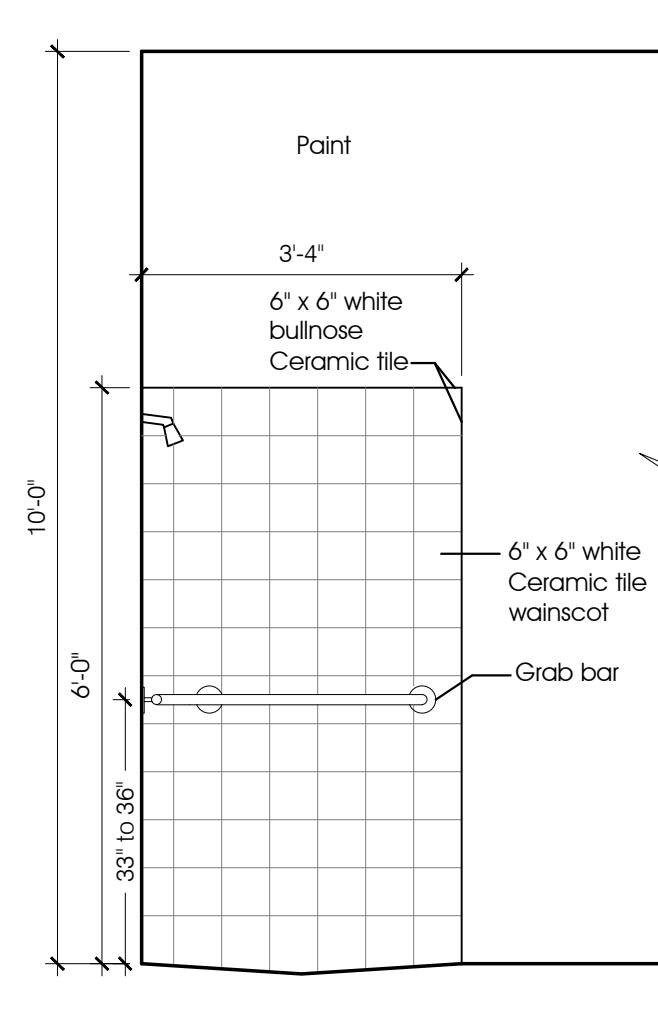


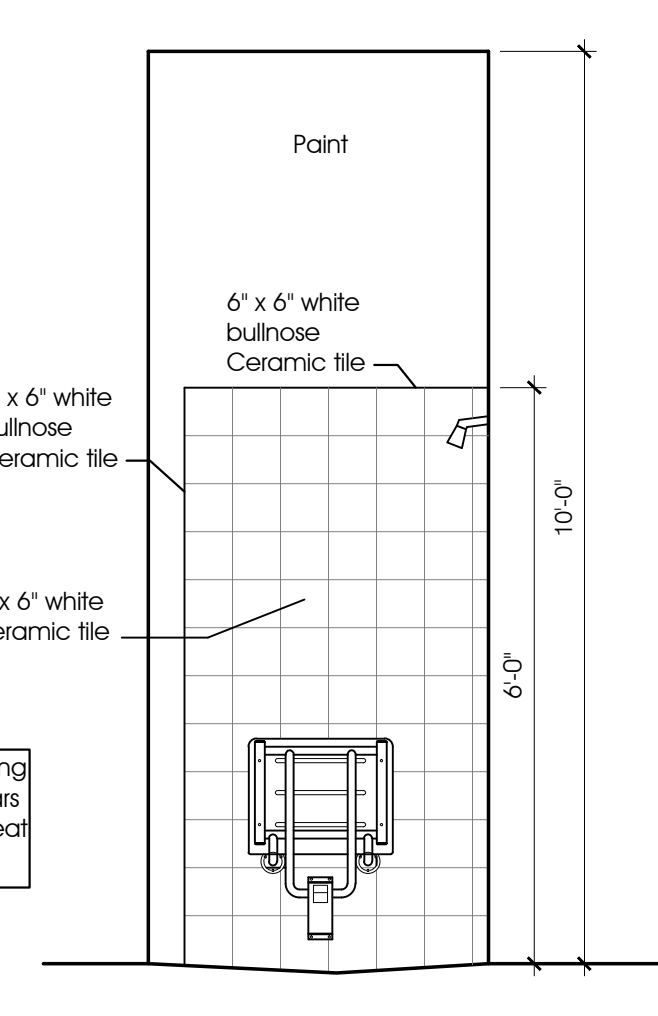
1
A8 ADA Enhanced Restroom Plan
 (Office) 1/2" SC



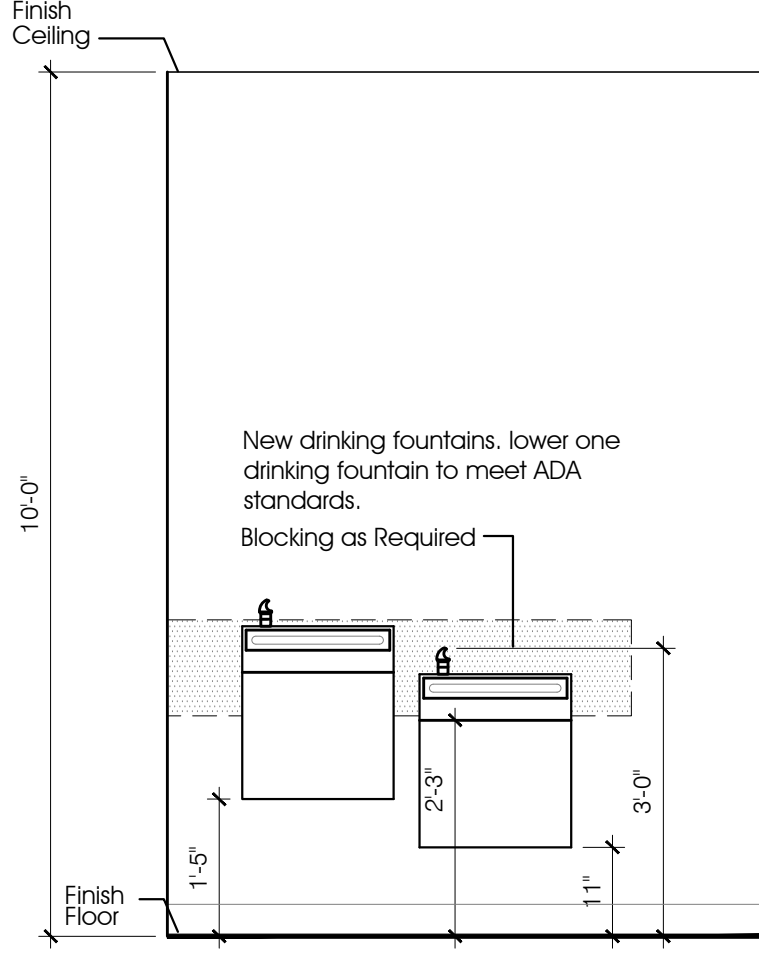
E
A8 ADA Roll-in shower
 Elevation 1/2" SC



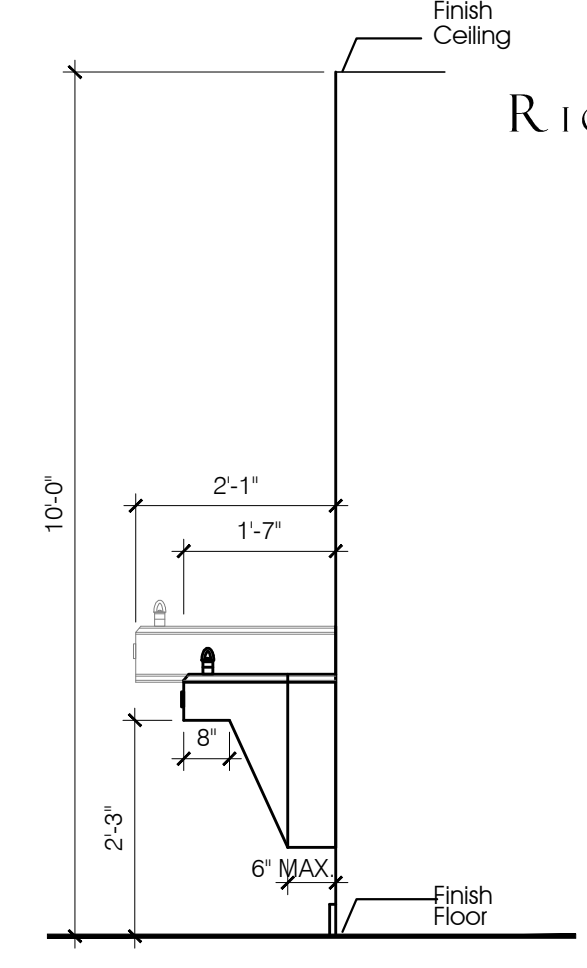
F
A8 ADA Roll-in shower
 Elevation 1/2" SC



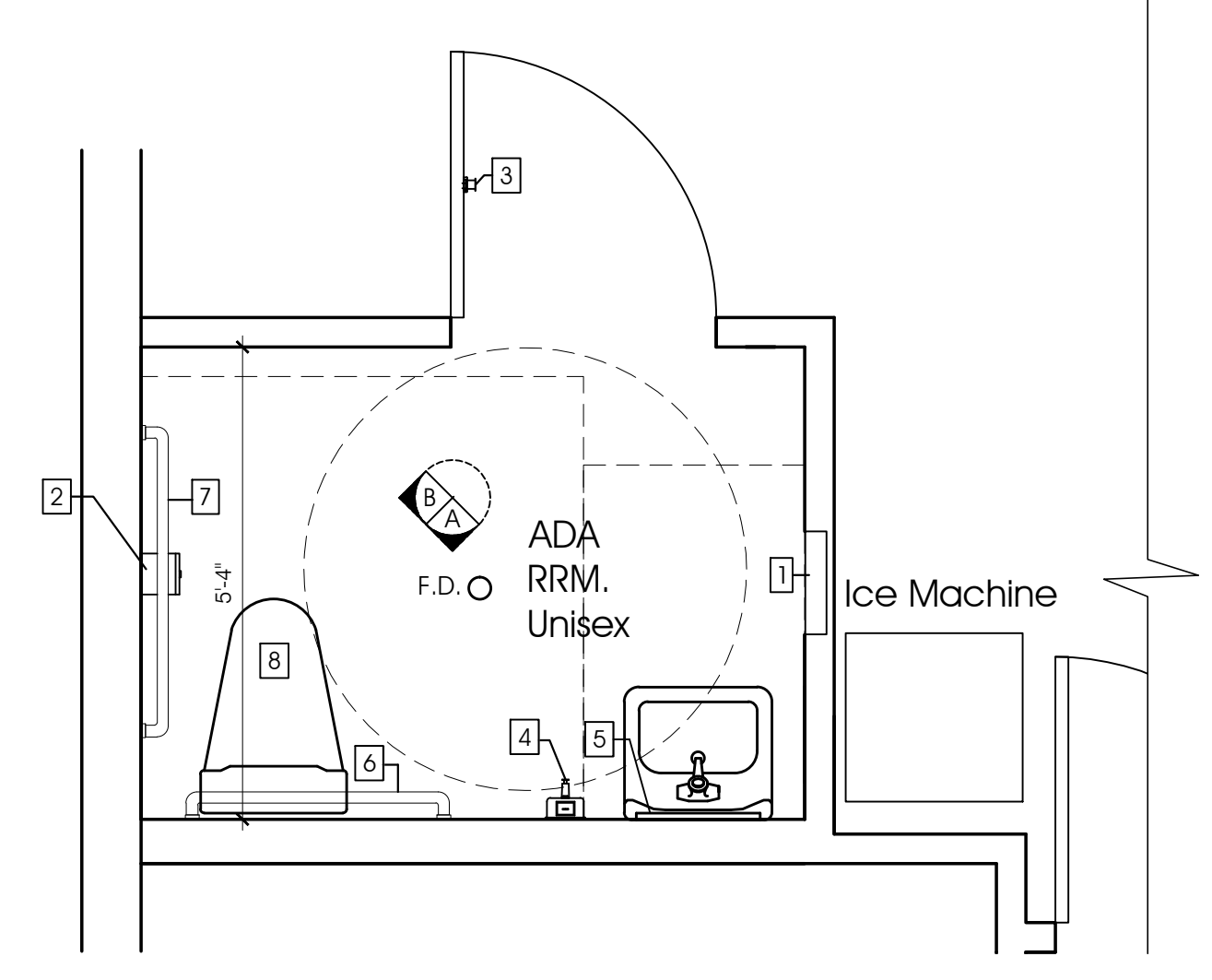
G
A8 ADA Roll-in shower
 Elevation 1/2" SC



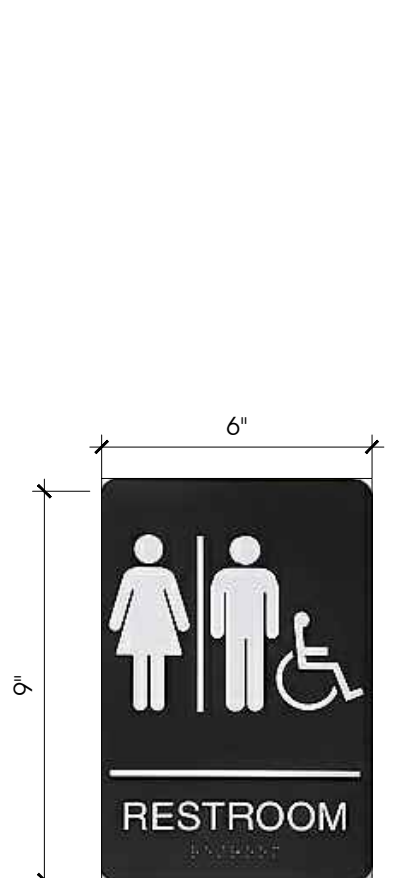
2
A8 Drinking Fountain Front Elevation
 1/2" SC



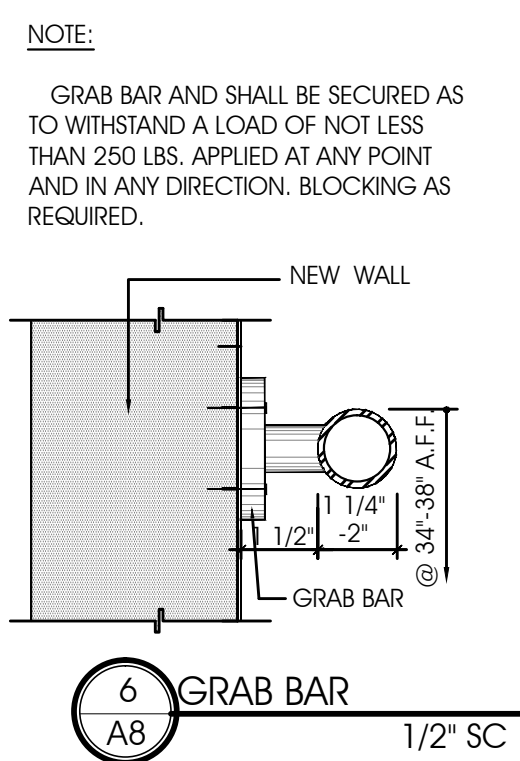
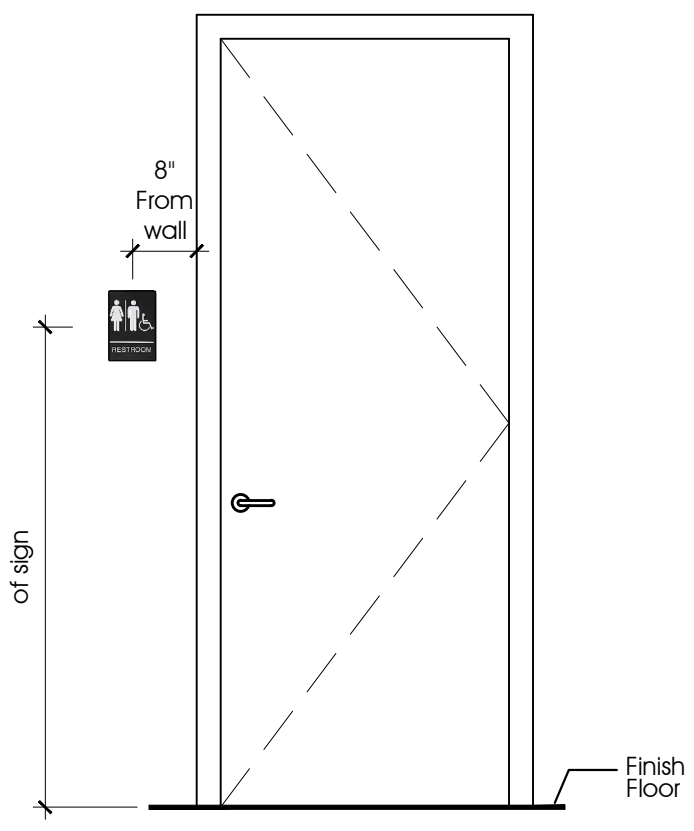
3
A8 Drinking Fountain Side Elevation
 1/2" SC



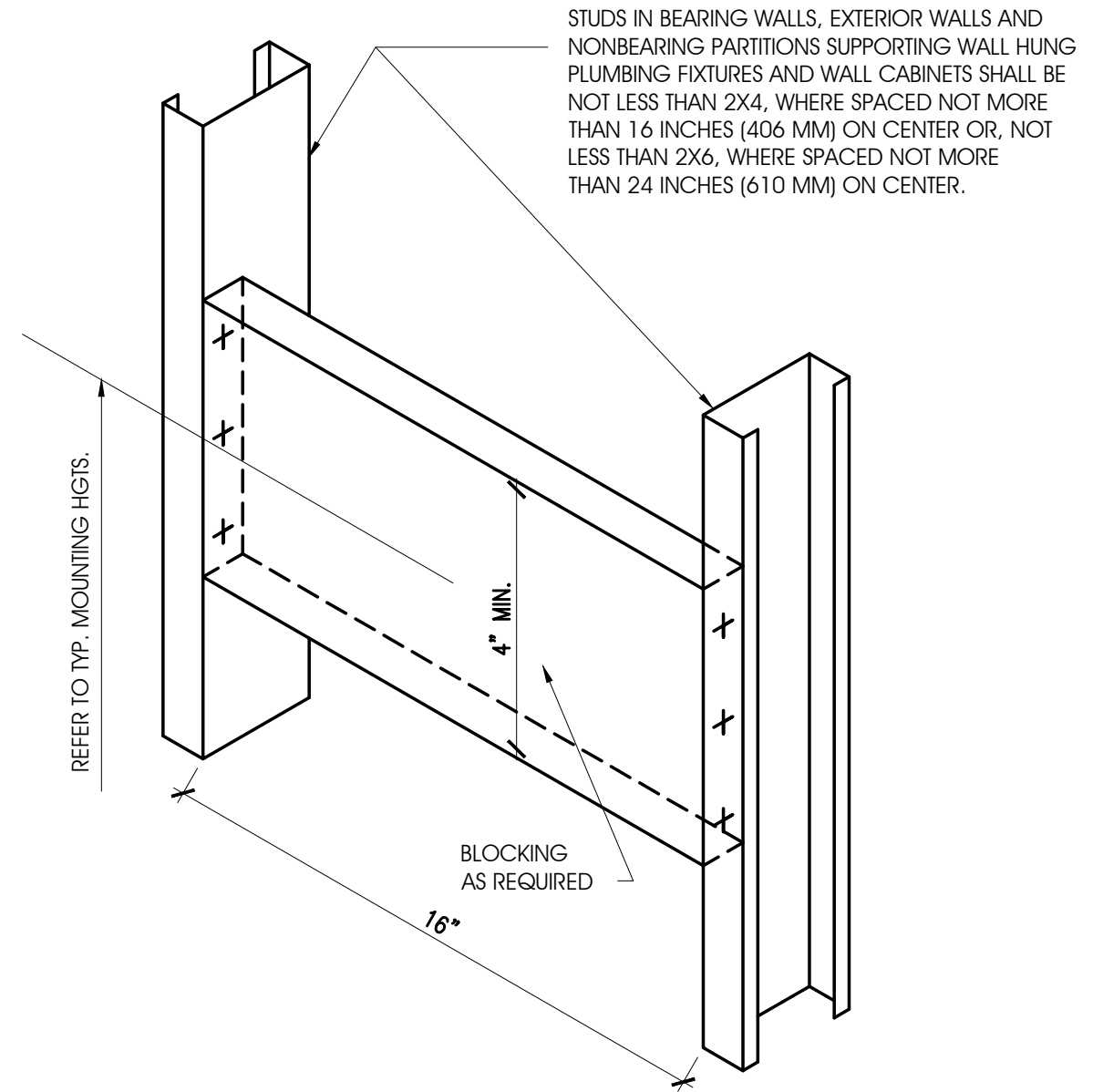
4
A8 ADA Enhanced Restroom
 (Warehouse) 1/2" SC



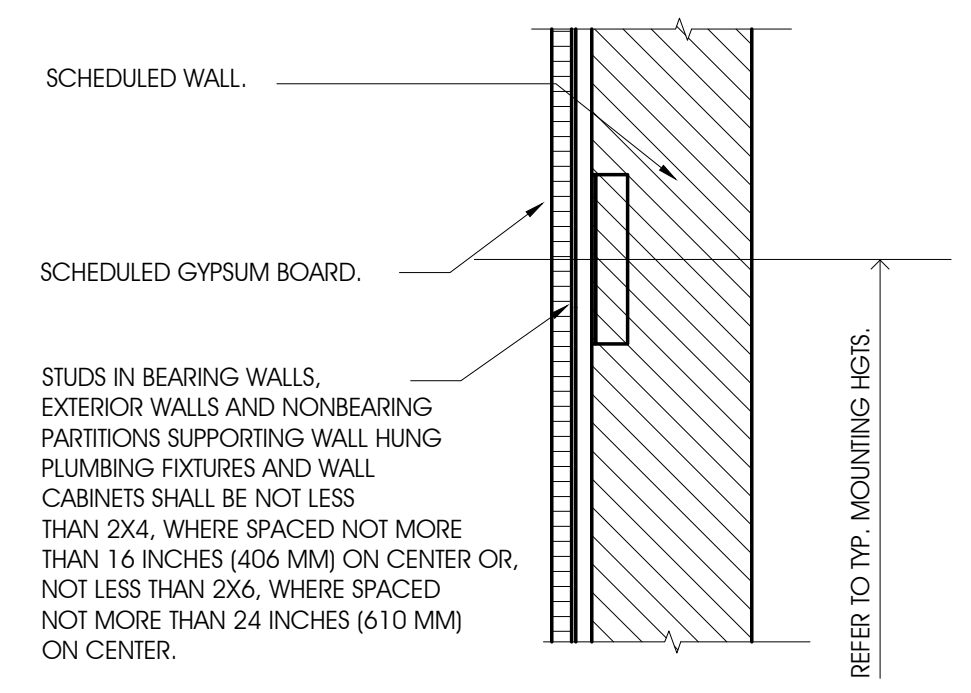
5
A8 ADA Compliant Tactile Restroom Sign
 N.T.S.



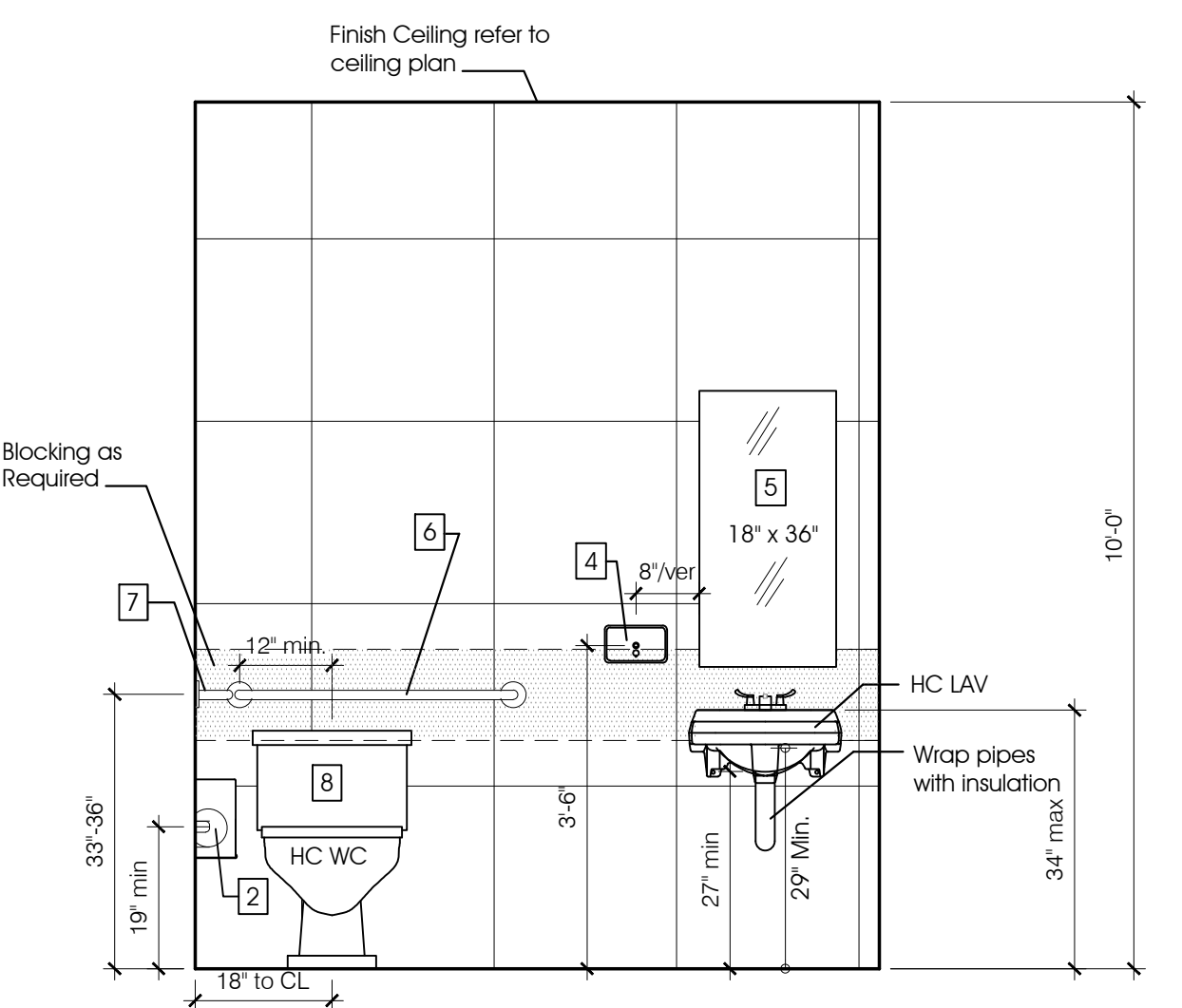
6
A8 GRAB BAR
 1/2" SC



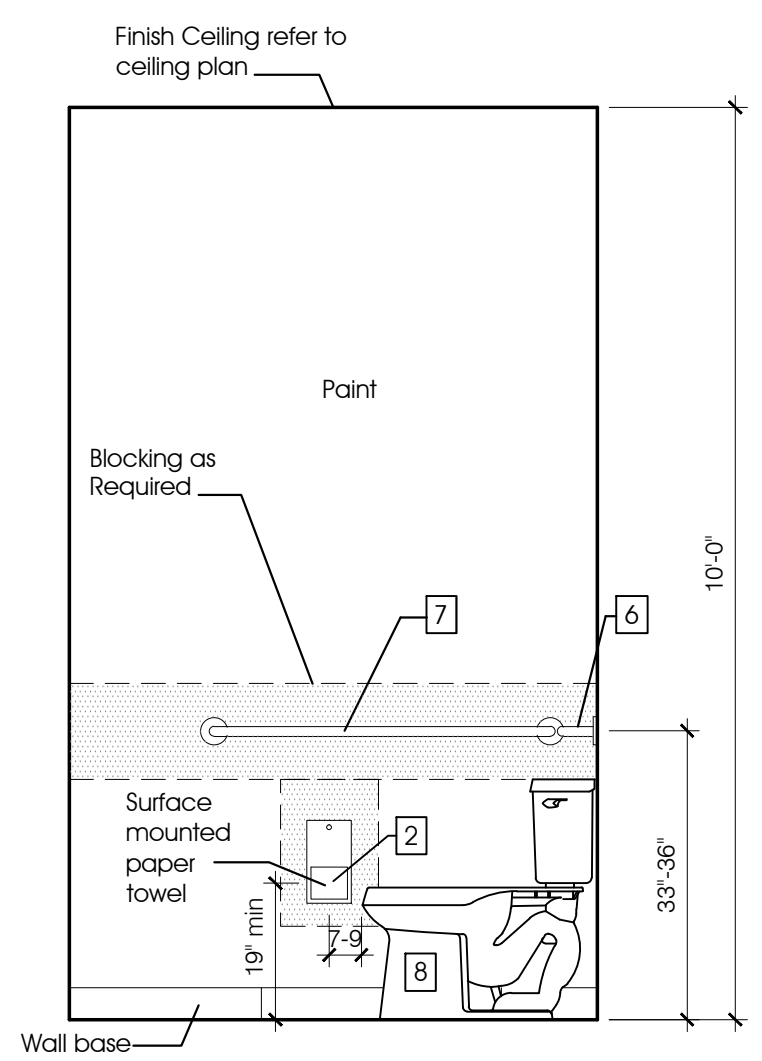
7
A8 Isometric Backing Partitions
 N.T.S.



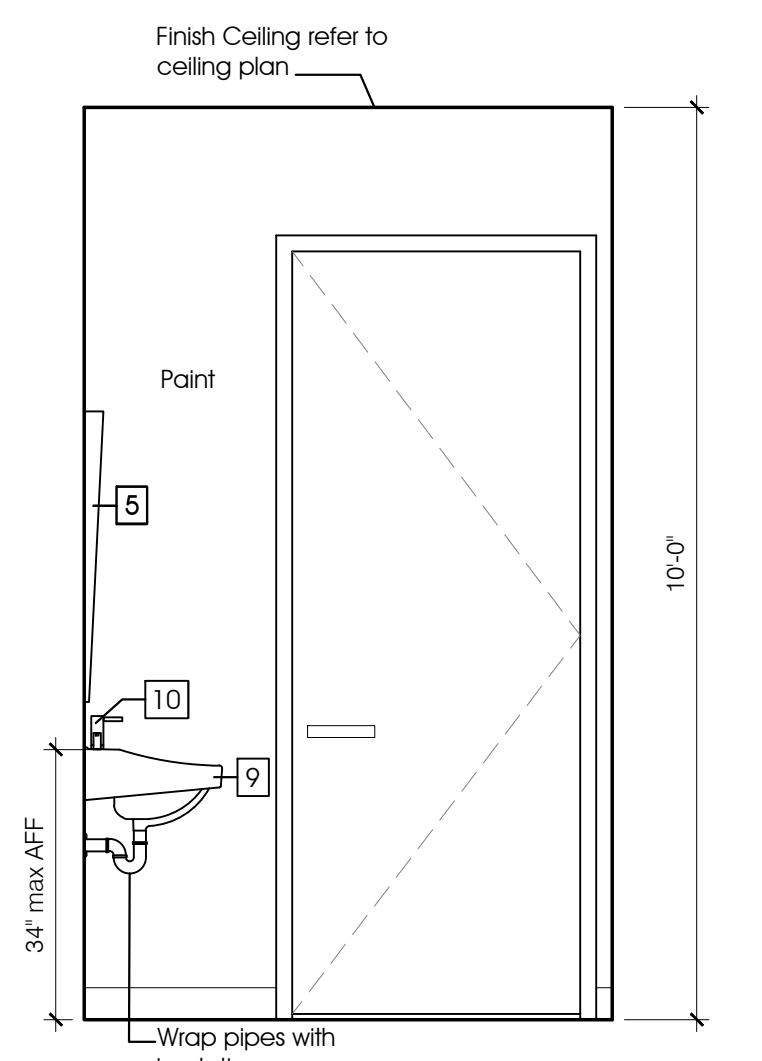
8
A8 Section Backing Partitions
 N.T.S.



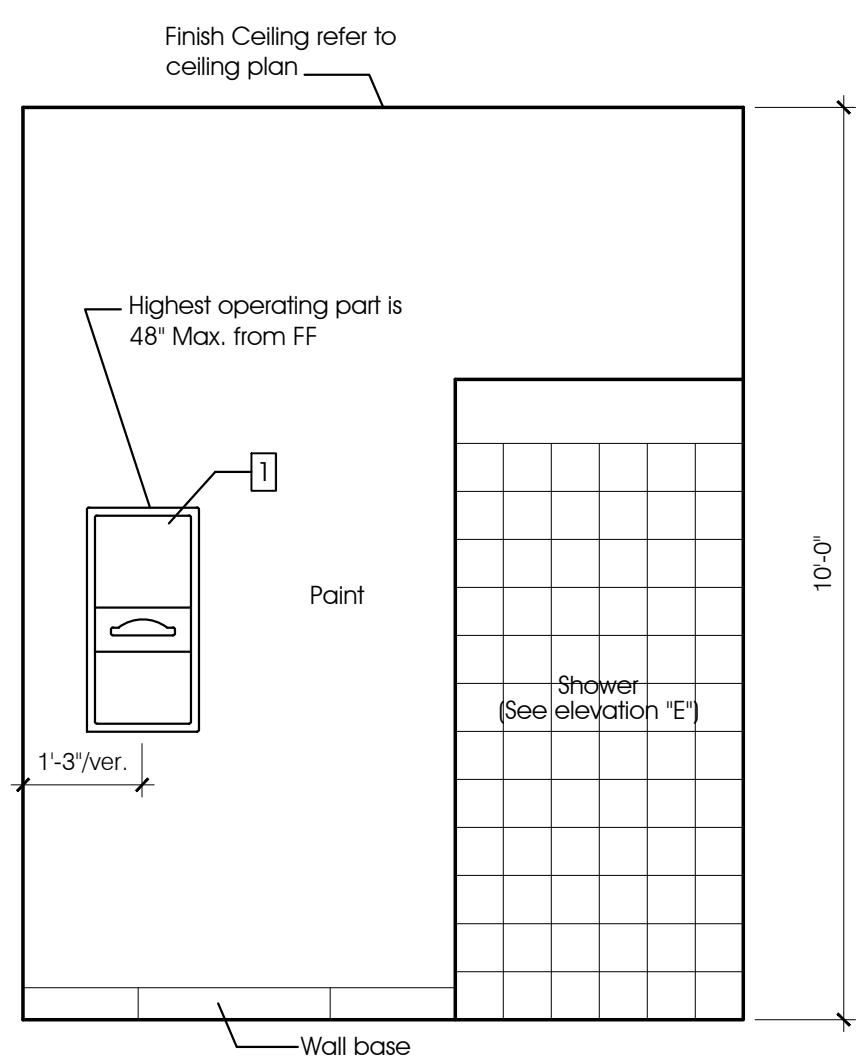
A
A8 ADA Restroom Elevation
 1/2" SC



B
A8 ADA Restroom Elevation
 1/2" SC



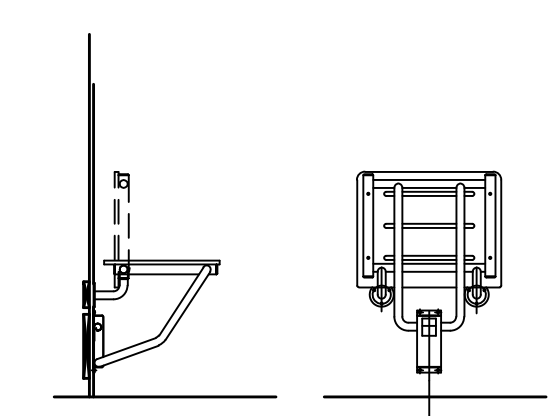
C
A8 ADA Restroom Elevation
 1/2" SC



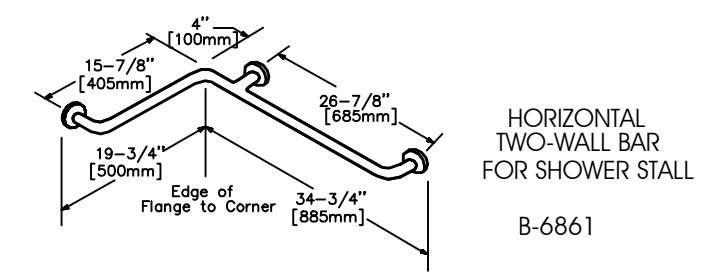
D
A8 ADA Restroom Elevation
 1/2" SC

Restroom Accessory & Plumbing Fixture Schedule				
ITEM	MFR.	MFR. NO.	ITEM DESCRIPTION	REMARKS
1	Bobrick	B-369	Classic series, recessed paper towel dispenser and waste receptacle.	Satin finish.
2	Bobrick	B-2888	Surface mounted multi-roll toilet tissue dispenser.	Satin finish.
3	Bobrick	B-76717	Single Robe Hook	Satin finish.
4	Bobrick	B-4112	Contura Series Surface-Mounted Soap dispenser	Satin finish.
5	Bobrick	B-293-1836	Tilt mirror with stainless steel frame.	18" x 36"
6	Bobrick	B-6806 x 36	1-1/2" dia. stainless steel grab bars w/snap flange.	Satin finish.
7	Bobrick	B-6806 x 42	1-1/2" dia. stainless steel grab bars w/snap flange.	Satin finish.
8	Kohler	K-3658	Higline class five toilet. ADA compliant include elongated open seat for code compliance.	White
9	American Standard	"Declyn"	Wall hung sink to comply with ADA. Grid drain. Include trap and concealed arms support (for 4" centerset)	White
10	American Standard	5502.145	Monterrey 4" centerset Lavatory Faucet with Lever Handles. Use grid drain.	Chrome.
11	Elkay	LVRGRNTL8C	Filtered Vandal-Resistant Wall mount Bi-level Green ADA cooler.	Stainless Steel
12	Bobrick	B-6861	Horizontal two-wall bar for shower stall.	Satin finish.
13	Bobrick	B-5191	Solid phenolic folding shower/dressing area seat.	18" x 14-7/16"
14	American Standard	1430.501	Berwick Shower trim package with single function rain shower. Provide rough in valve.	Chrome.
15	American Standard	1662.600	Shower system kit for hand shower. Provide valve and trim as required.	Chrome.

NOTE:
 1. For installation details and backing requirements, refer to Mfr. cut sheets and specs recommendations.
 2. For installation heights requirements, refer to Restrooms Elev., specially for the ADA required heights and clearances.
 3. Contractor to notify the Architect in case of any discrepancy, before ordering the product.
 4. G.C. to request shopdrawings from vendor for toilet partitions, for approval before ordering them.



B-5191 FOLDING SEAT FOR SHOWER STALL



HORIZONTAL TWO-WALL BAR FOR SHOWER STALL
 B-6861