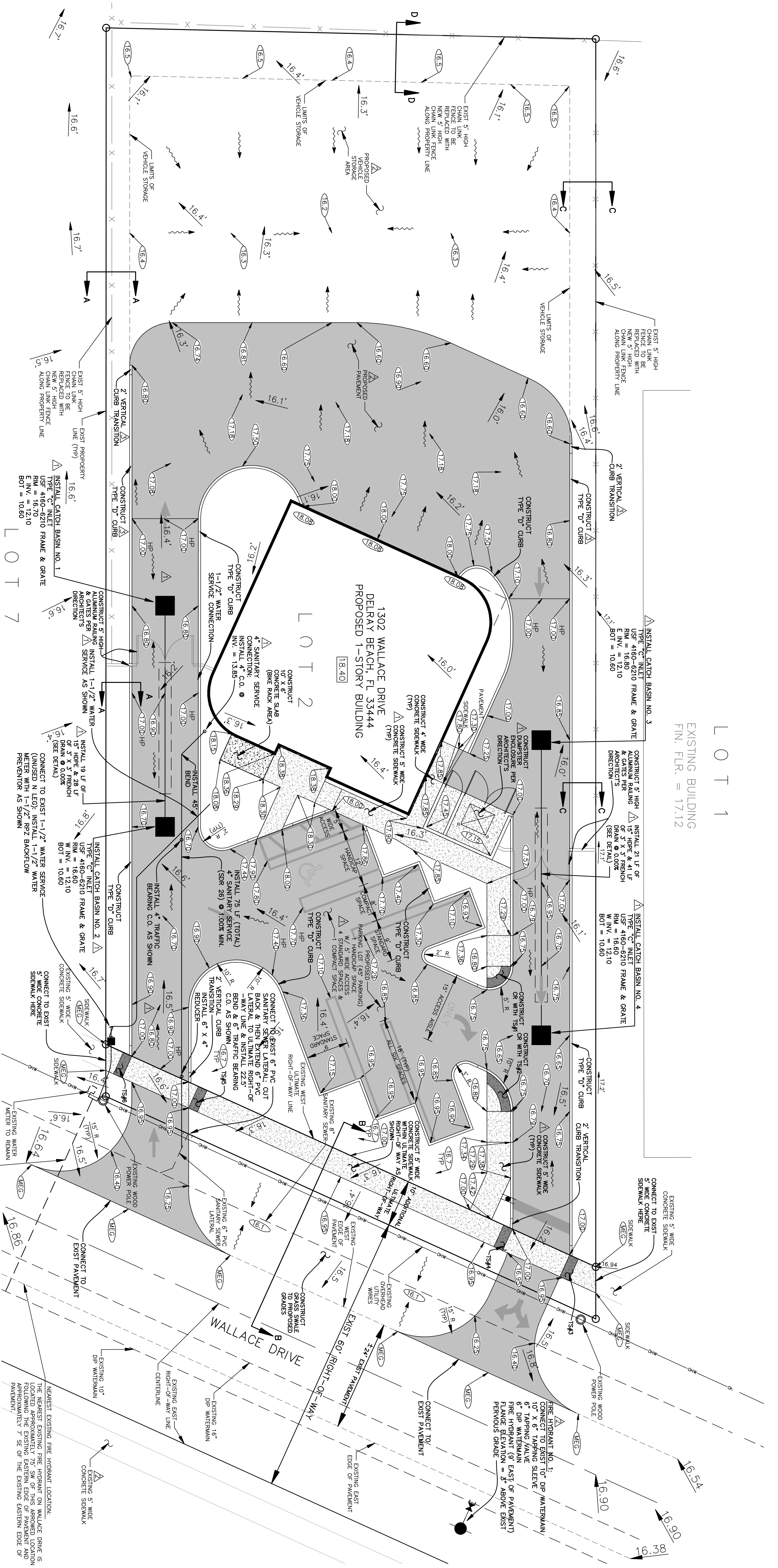
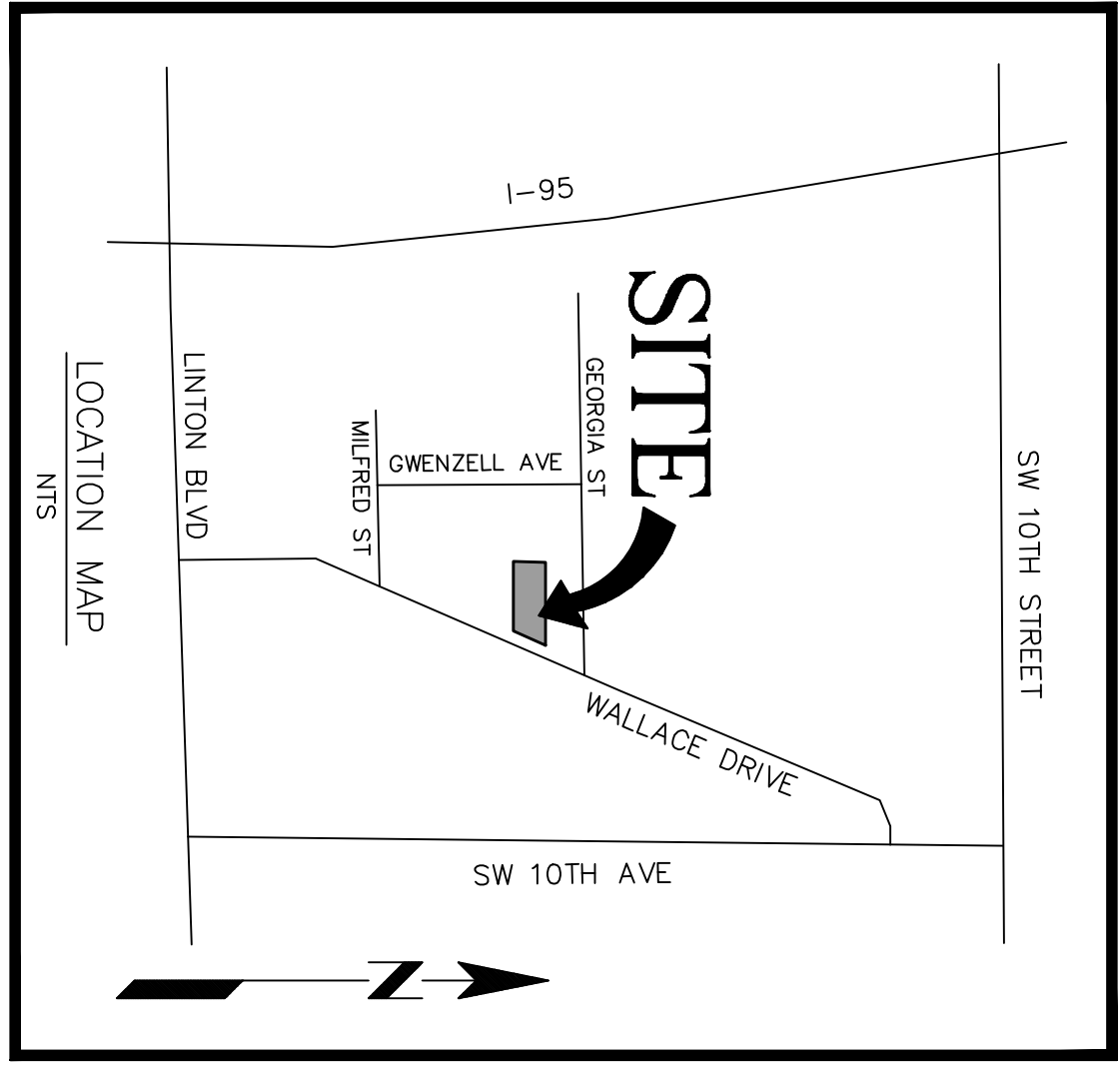


SECTION 12, TOWNSHIP 46 SOUTH, RANGE 43 EAST



LOT 1
EXISTING BUILDING
FIN. FLR. = 17.12

1302 WALLACE DRIVE
DELRAY BEACH, FL 33444
PROPOSED 1-STORY BUILDING

LOT 2

LEGEND:

- PROPOSED GRADE
- EXISTING ELEVATION
- DRAINAGE SHEET FLOW DIRECTION ARROW
- DEMOTES PROPOSED PAVEMENT
- DEMOTES PROPOSED CONCRETE SIDEWALK
- LINEAR FEET
- HIGH POINT
- EXISTING
- PROPOSED FINISHED FLOOR ELEVATION
- RADIUS
- TYPICAL
- SANITARY EXISTING GRADE
- SANITARY CLEAN OUT
- MINIMUM
- DUCTILE IRON PIPE
- REDUCED PRESSURE ZONE
- TACTILE SURFACE LOCATION & NUMBER
- CURB RAMP LOCATION

NOTES:

1. CONTRACTOR TO CONTACT SUNSHINE STATE ONE CALL (811) FOR UTILITY LOCATIONS PRIOR TO COMMENCEMENT OF CONSTRUCTION.
2. CONSTRUCTION CONCRETE SIDEWALK & CURB RAMPS PER FOOT INDEX 304 AND 310.
3. CONTRACTOR TO REMOVE EXISTING LANDSCAPING VEGETATION (TREES, SHRUBS & GRASS) AS NEEDED TO CONSTRUCT PAVING MODIFICATIONS SHOWN.
4. ALL EXISTING UNDERGROUND UTILITIES TO BE LEFT UNDISTURBED EXCEPT AS NOTED.
5. ALL TYPE "D" CURB TO BE CONSTRUCTED PER FOOT INDEX NO. 300.
6. REFER TO SHEET 2 THROUGH 4 FOR STORMWATER EROSION CONTROL DETAILS, GENERAL NOTES, CROSS SECTIONS, DRAINAGE DETAILS, PAVING DETAILS AND PAVING SPECIFICATIONS.
7. REFER TO SHEET 5 FOR APPLICABLE WATER AND SEWER DETAILS.
7. REFER TO SHEET 7 FOR STRIPING AND SIGNAGE INFORMATION. REFER TO SHEET 8 FOR STRIPING AND SIGNAGE INFORMATION.
8. ELEVATIONS SHOWN HEREON ARE BASED ON THE NATIONAL GEODETIC VERTICAL DATUM OF 1929 (NGVD).



THOMAS F. LUBANOVIC
CONSULTING ENGINEERS
Professional Engineer No. 56659
John A. Grant, Jr., Inc.
3333 N. Federal Hwy., Ste. 3
Boca Raton, FL 33431
Certificate of Authorization No. LB 50

NO.	REVISION	BY	DATE
1	REVISIONS PER REVISED SITE PLAN LAYOUT	CBK	MAR 2016
2	REVISIONS PER REVISED SITE PLAN LAYOUT	CBK	JAN 2016
3	REVISIONS PER REVISED SITE PLAN LAYOUT	CBK	AUG 2015

JOHN A. GRANT, JR., INC.
CONSULTING ENGINEERS
3333 NORTH FEDERAL HIGHWAY
SUITE 300, BOCA RATON, FLORIDA 33431
PH. NO. 561-3333, TOLL FREE 1-800-561-3955-3315
LICENSED BUSINESS NO. LB 50

1302 WALLACE DRIVE
DELRAY BEACH, FLORIDA 33444

PAVING, GRADING & DRAINAGE
& SEWER SERVICES

MADE _____ DATE FEB 2015 F.B. N/A SCALE 1" = 10'
CHECKED _____ DATE _____ SCALE _____ OF _____ SHEET _____ OF _____