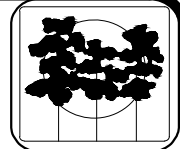
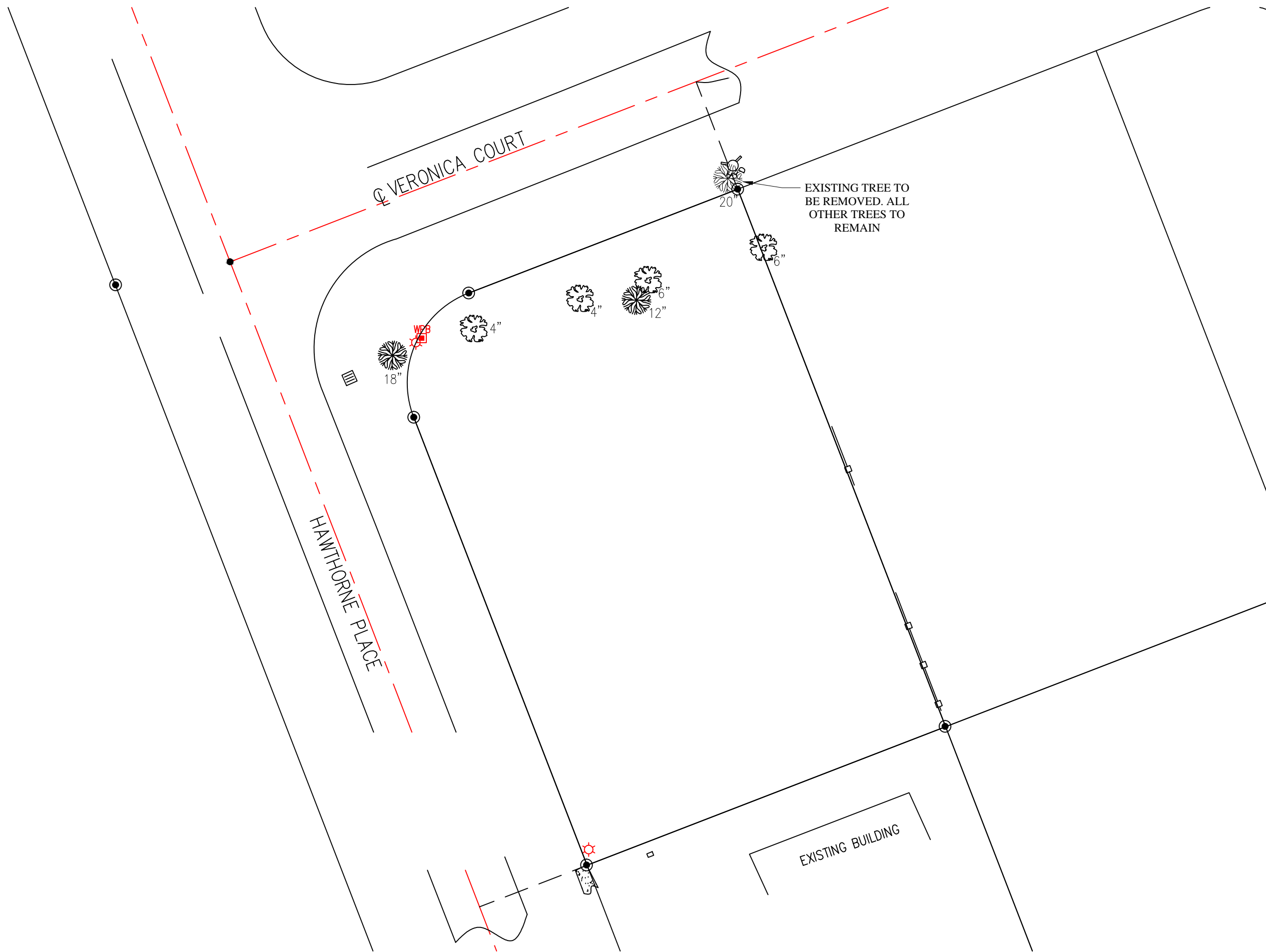


51



DATE MAR. 2016	DRAWN BY JH
DESIGNED BY JH	CHECKED BY

REVISIONS


THE VILLAGE OF WELLINGTON
 Engineering Department
 12300 Forest Hill Boulevard, Wellington, Florida 33414

14022 VERONICA COURT
HALF COURT BASKETBALL COURT
DEMOLITION PLAN

JASON HANCHUK, P.E.
 FL REG. #56787

Copyright 2015 Village of Wellington. This drawing is an instrument of service by the Village of Wellington and is not to be reproduced in part or in whole beyond the intended scope of use.

BID #: 011-16/DZ

SHEET NUMBER
3 OF 8

PROPOSED DEMO PLAN- Scale: 1:300