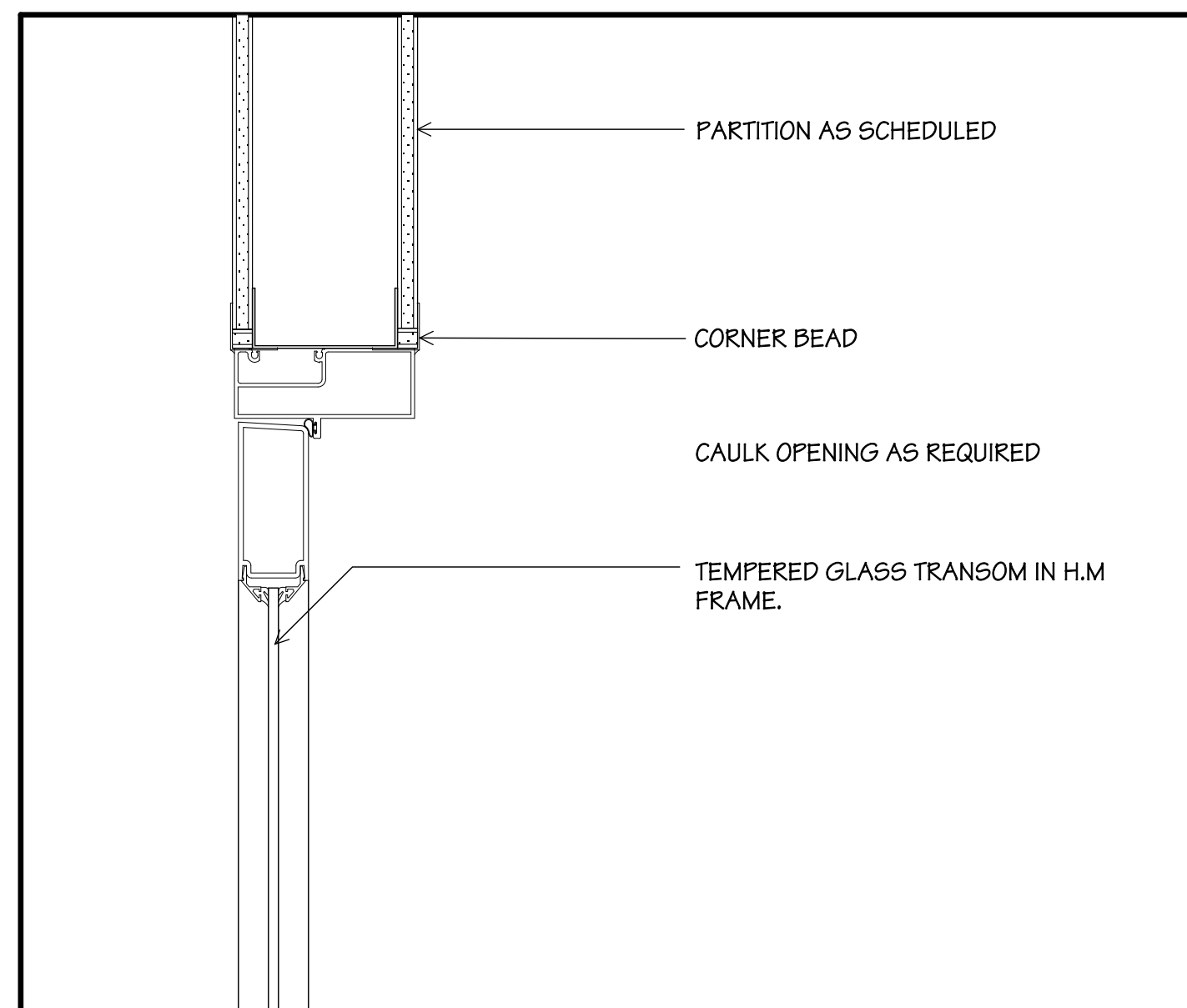
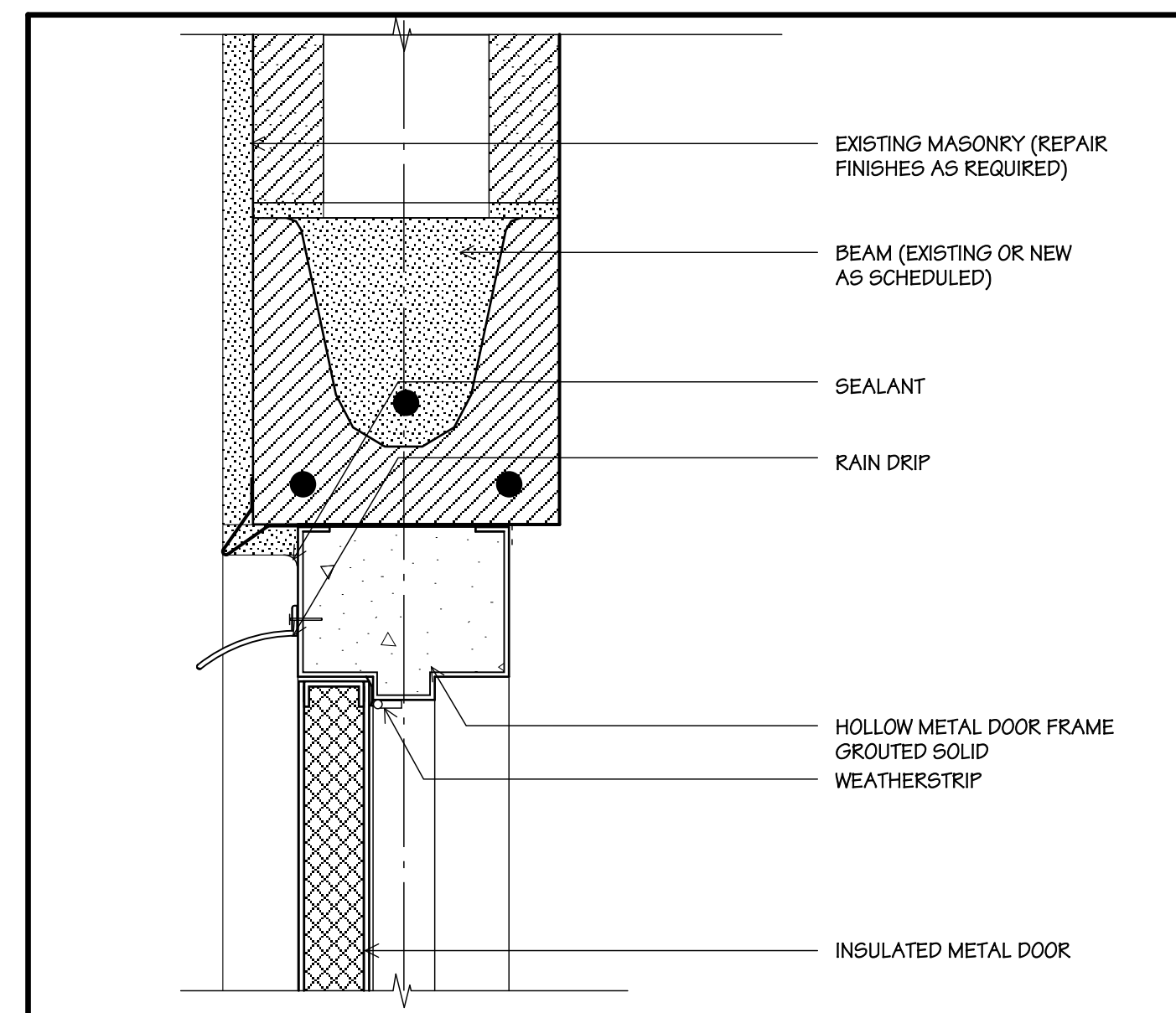


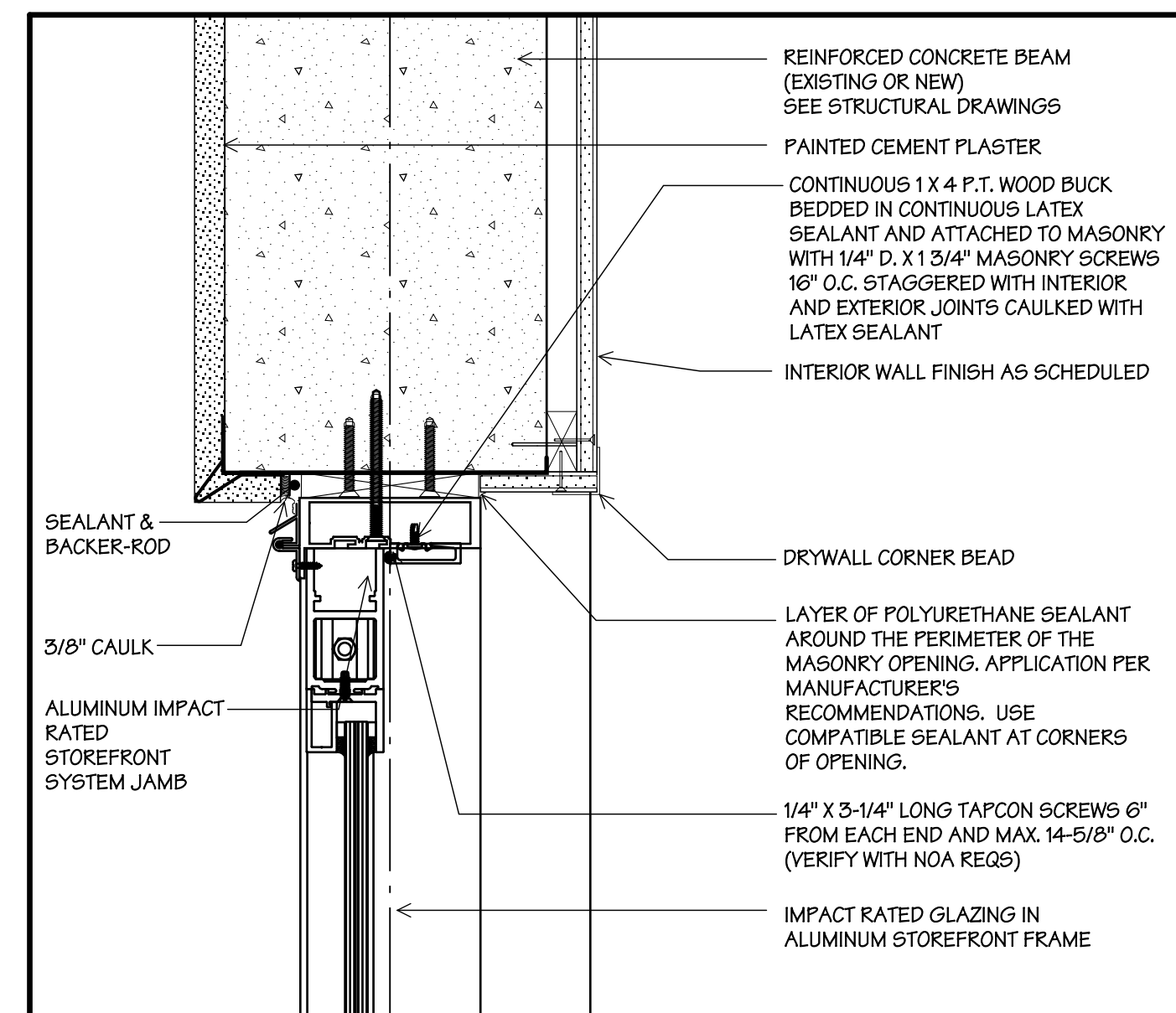
10 STOREFRONT DOOR HEAD IN STOREFRONT
3" = 1'-0"



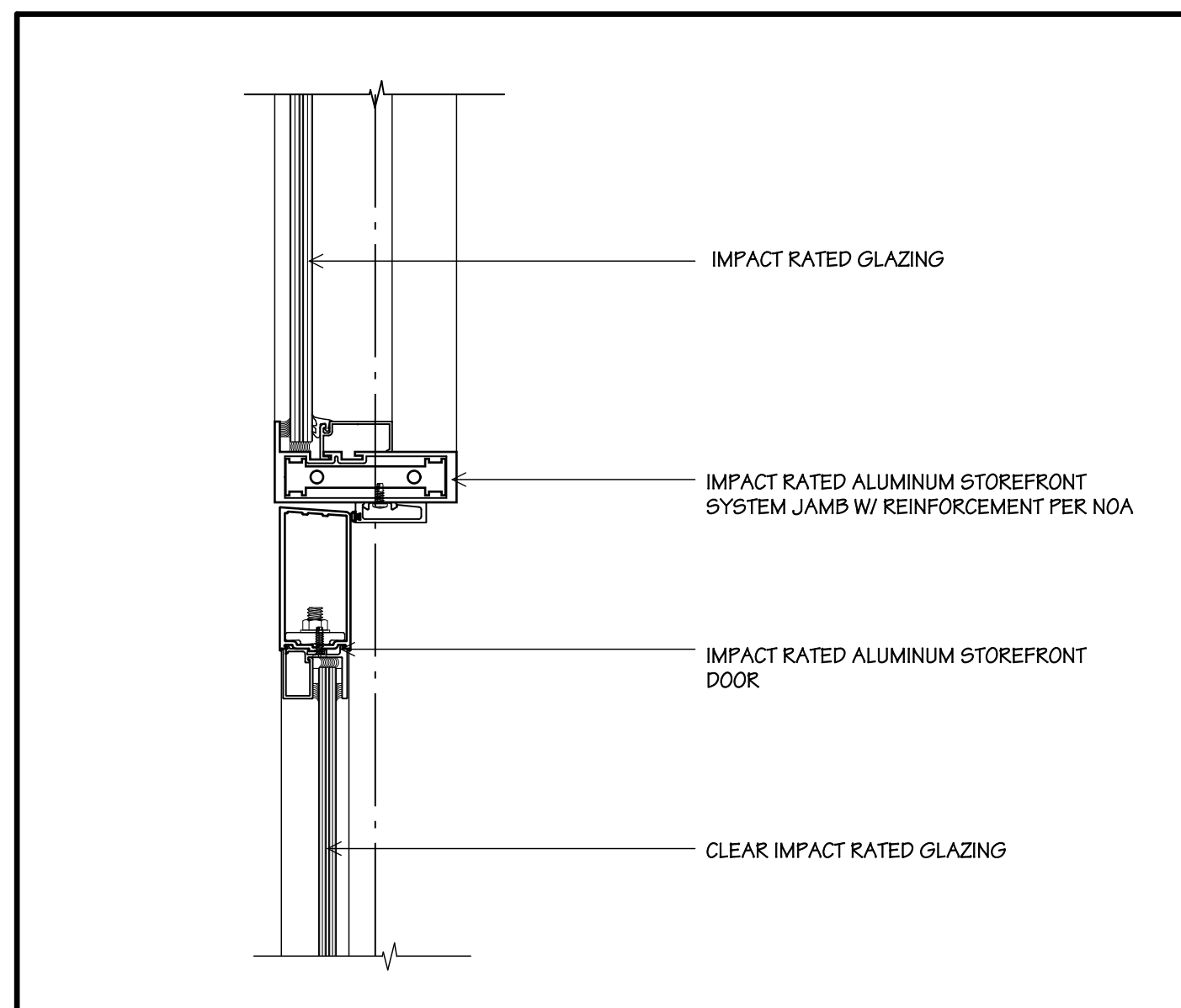
7 INTERIOR FRENCH DOOR & TRANSOM JAMB DETAIL
3" = 1'-0"



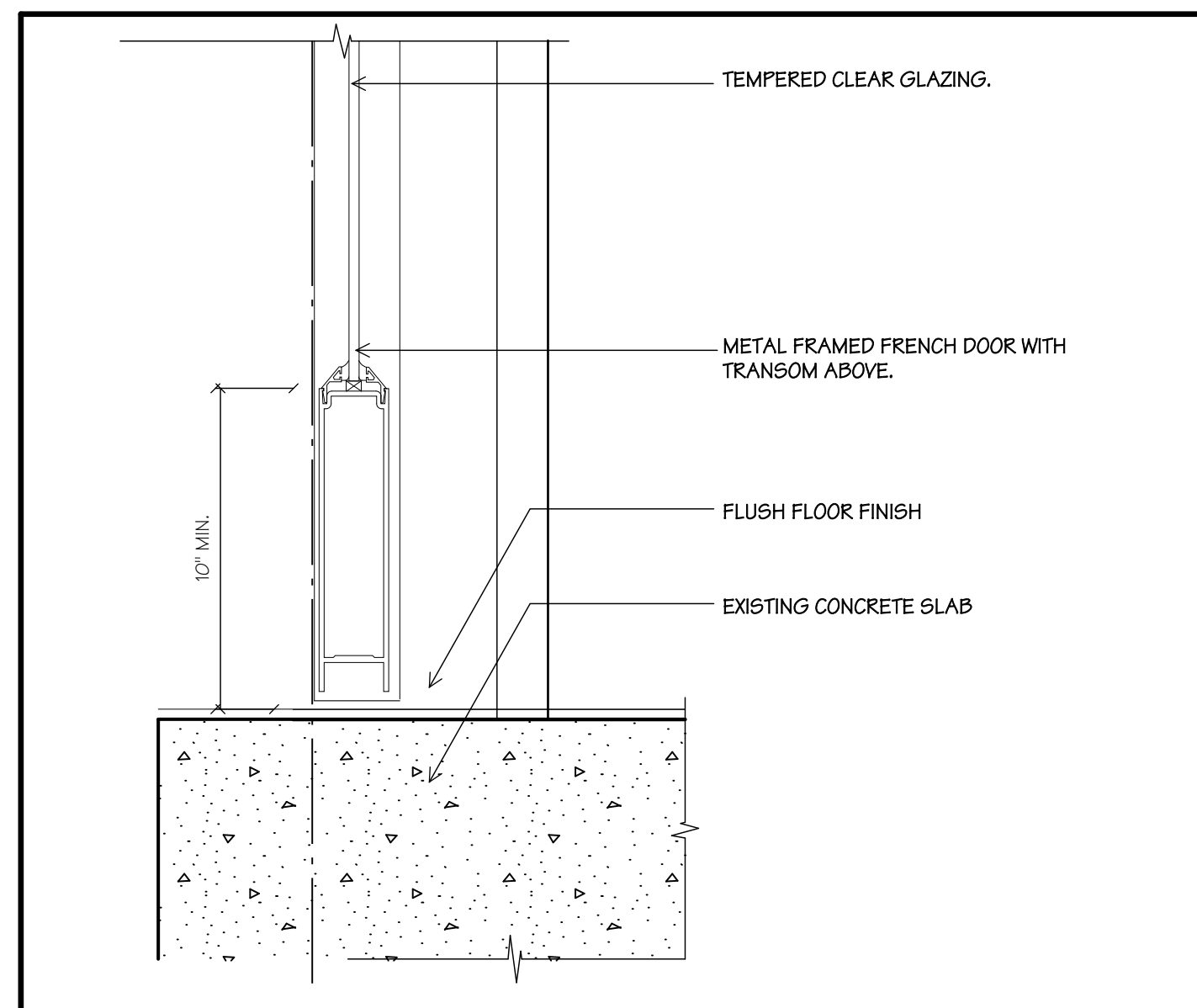
4 METAL DOOR HEAD DETAIL
3" = 1'-0"



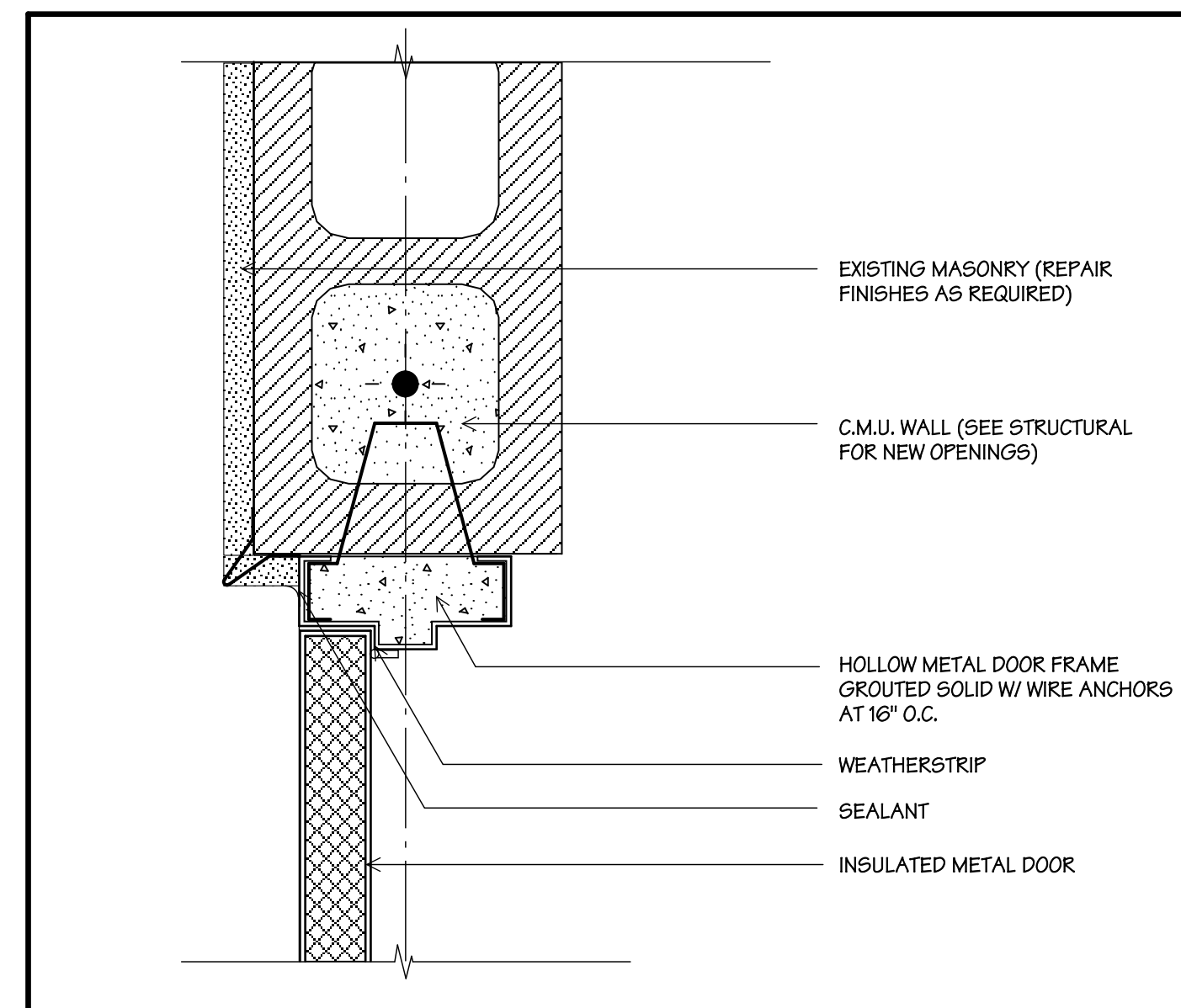
1 STOREFRONT DOOR HEAD
3" = 1'-0"



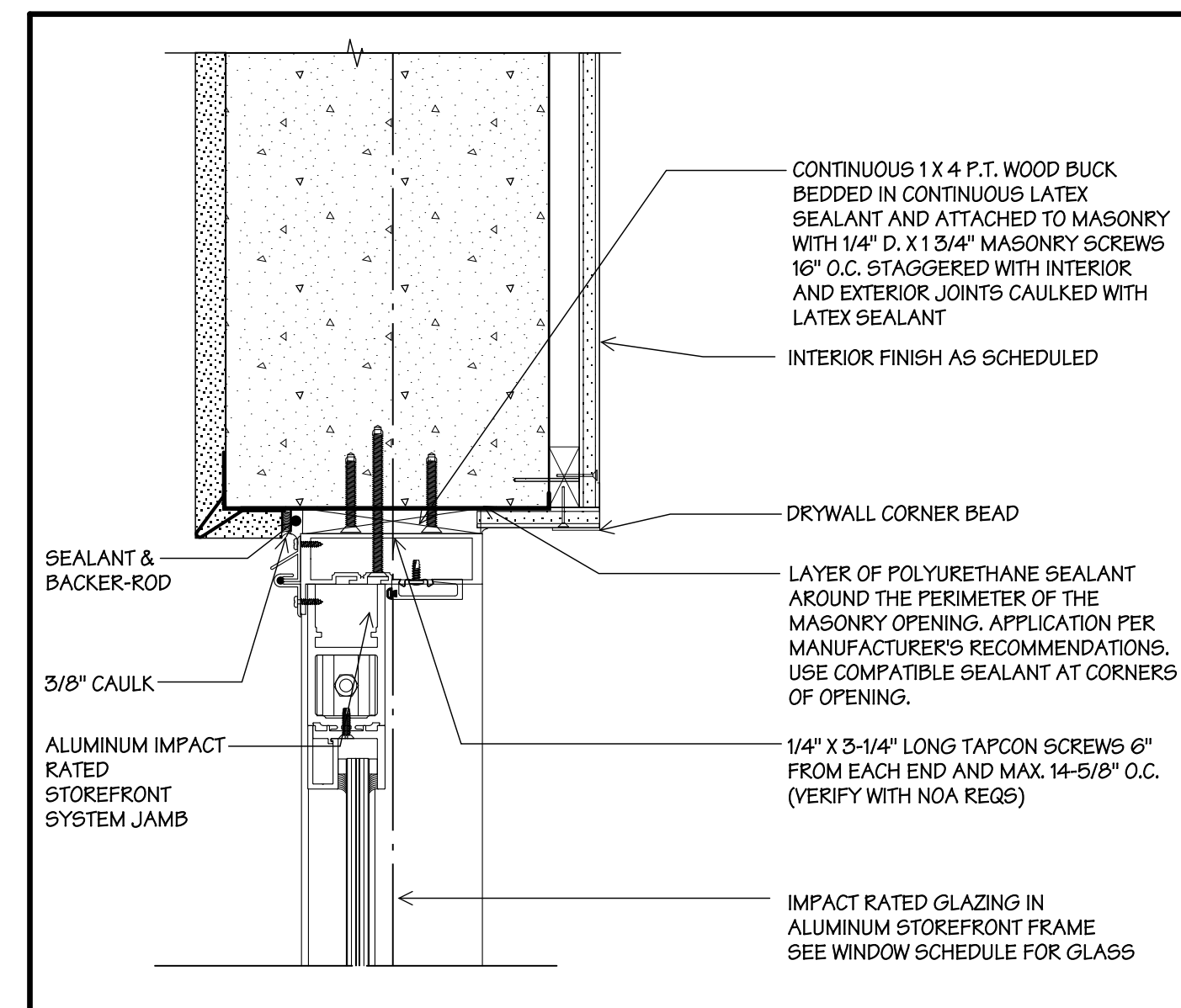
11 STOREFRONT DOOR JAMB IN STOREFRONT
3" = 1'-0"



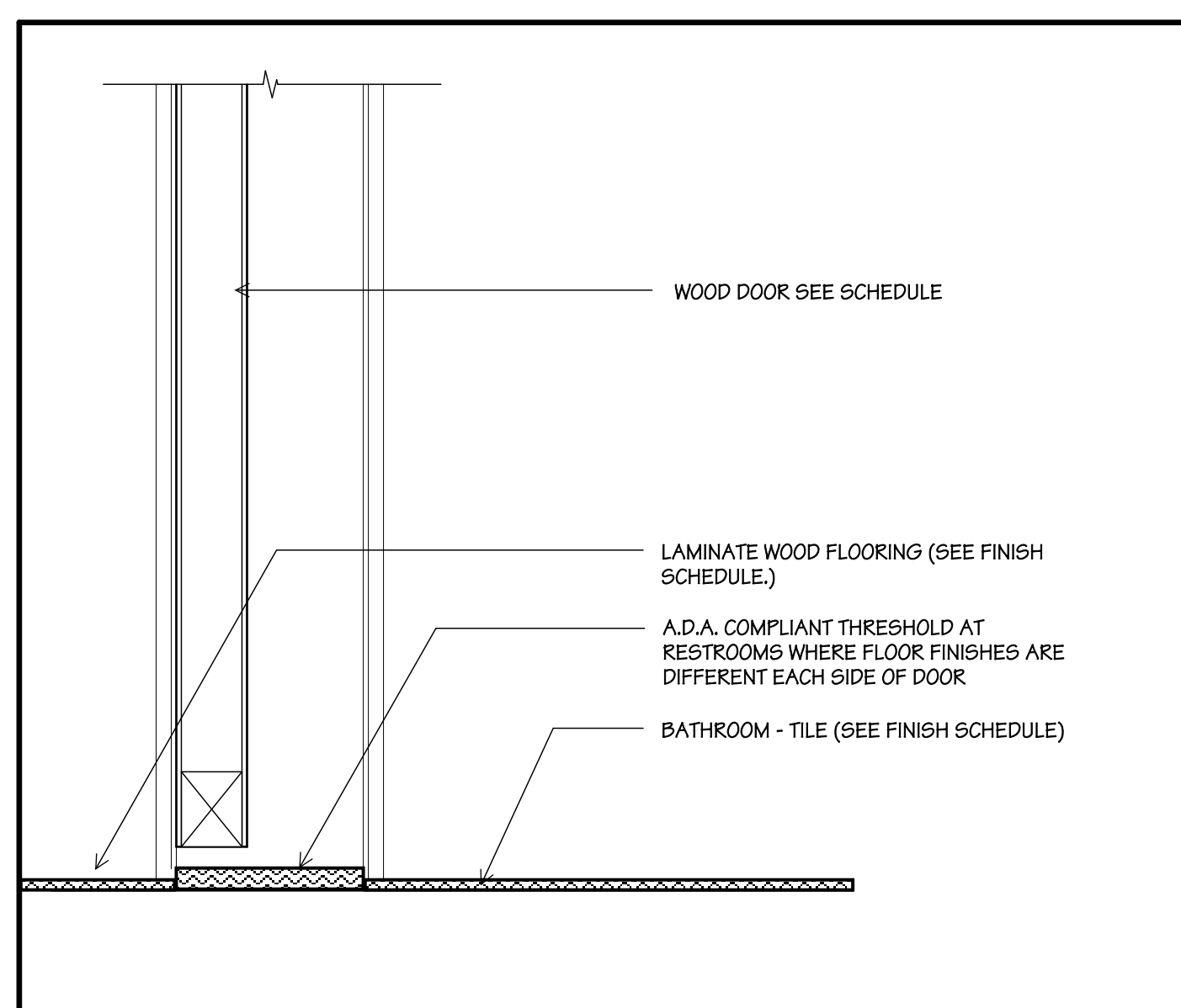
8 INTERIOR FRENCH DOOR THRESHOLD
3" = 1'-0"



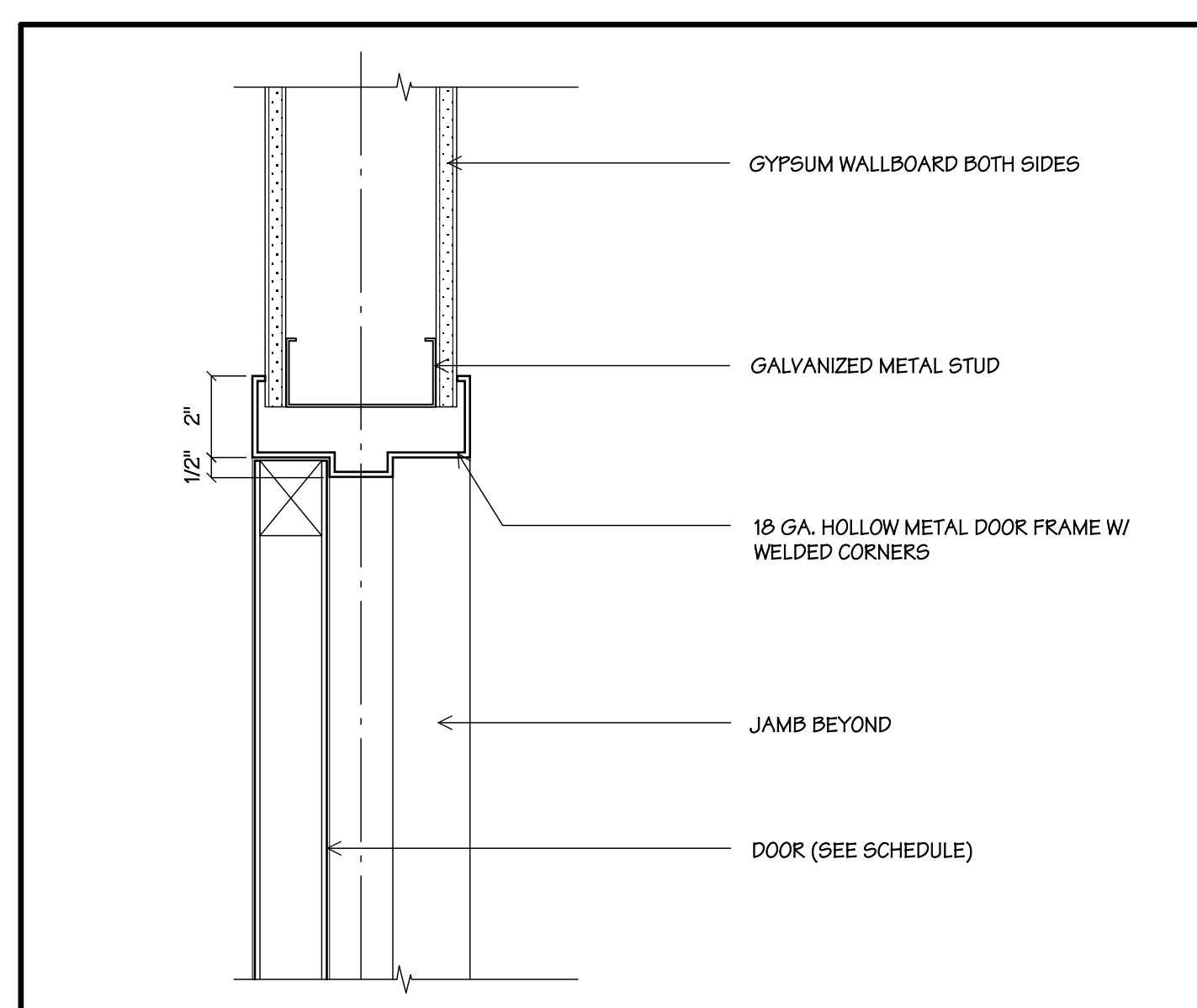
5 METAL DOOR JAMB DETAIL
3" = 1'-0"



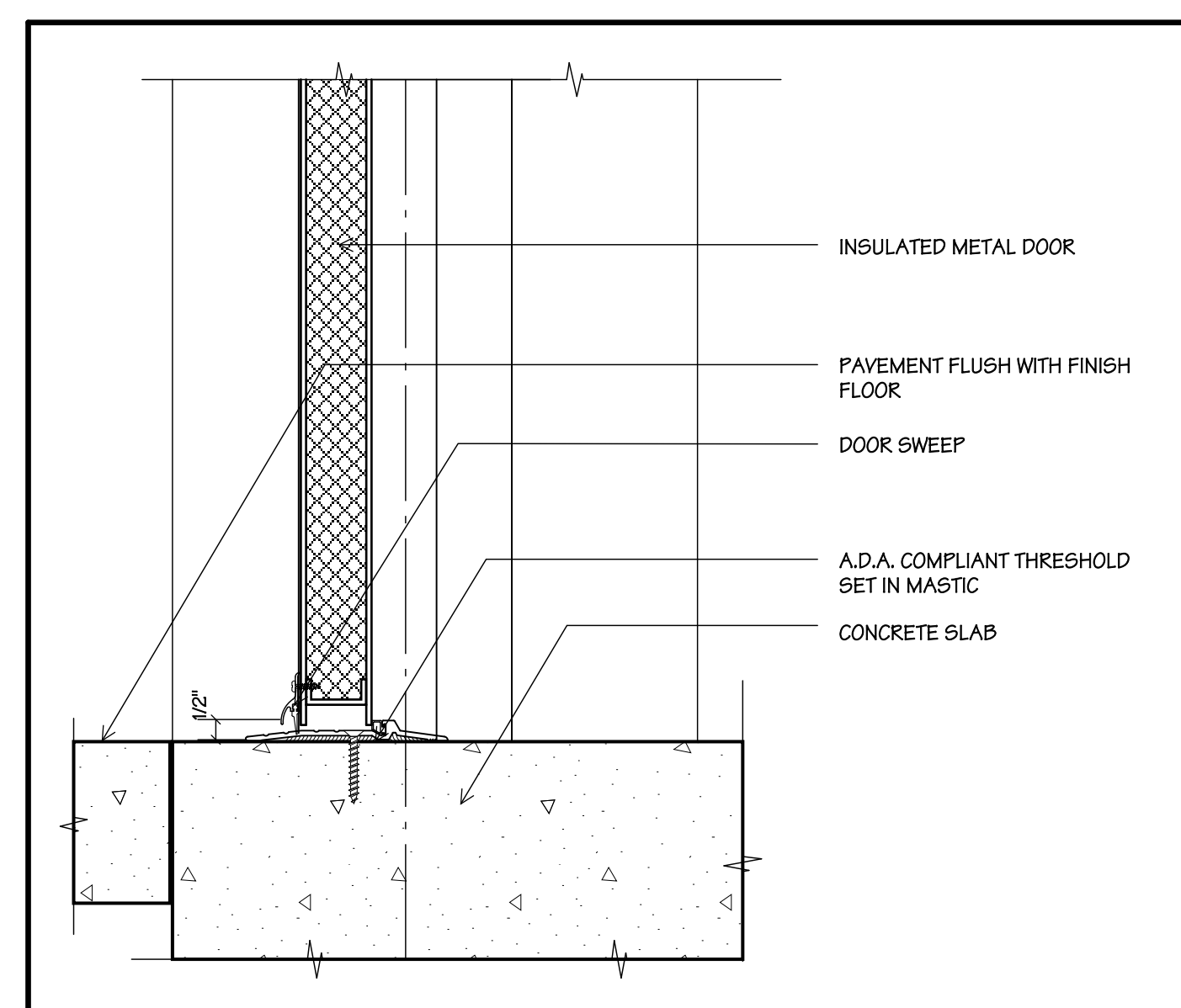
2 STOREFRONT JAMB
3" = 1'-0"



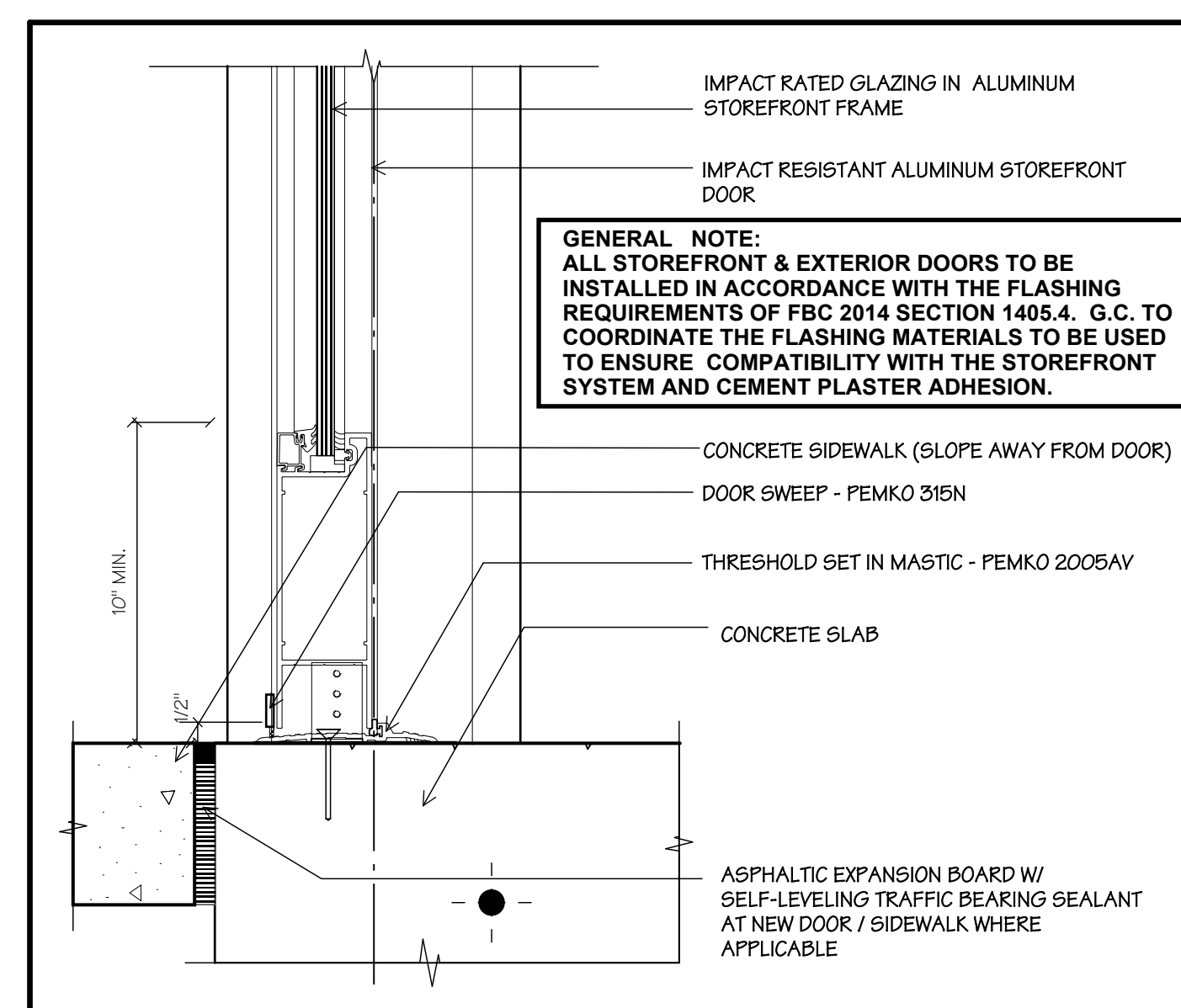
12 SILL (TYP. INT. PARTITION)
3" = 1'-0"



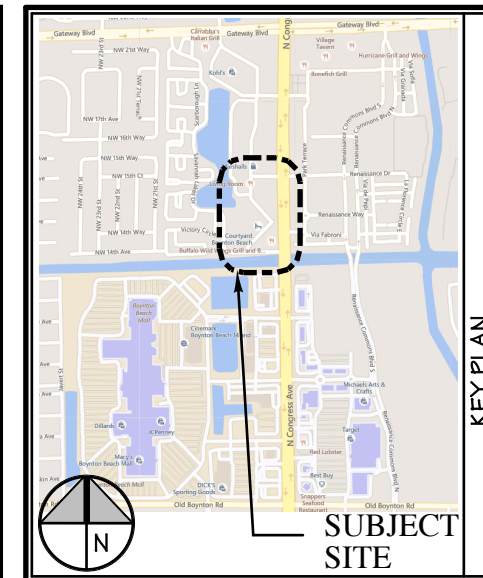
9 INTERIOR DOOR HEAD / JAMB
3" = 1'-0"



6 H.M. DOOR THRESHOLD
3" = 1'-0"



3 STOREFRONT DOOR THRESHOLD
3" = 1'-0"



MARK	DESCRIPTION	DATE
▲		
▲		
▲		
▲		

ARCHITECTURE/PLANNING
MARC WIENER, A.I.A.
AK # 000416
851 SOUTH FEDERAL HWY, STE 203
BOCA RATON, FLORIDA 33432
561-750-4111 FAX: 561-750-5299

SOUTH FLORIDA SCHOOLS, LLC.
1820 SW 3 AVE, STE 202
MIAMI, FLORIDA 33129

KLA CHILDCARE
FORMER 'PETE ROSE' RESTAURANT
INTERIOR IMPROVEMENT
1601 N CONGRESS AVE
BOYNTON BEACH, FLORIDA

JOB NUMBER	15118
SCALE	AS NOTED
PROJECT DATE	
ISSUE DATE	16.03.22
BID DATE	

DRAWN BY	BB
CHECKED BY	MW
DISCIPLINE	ARCHITECTURE
PLAN TYPE	DETAILS
SHEET NUMBER	A8.02