

CONSTRUCTION PLANS AND SPECIFICATIONS

FOR

GATLIN / EDGARCE OFFICE

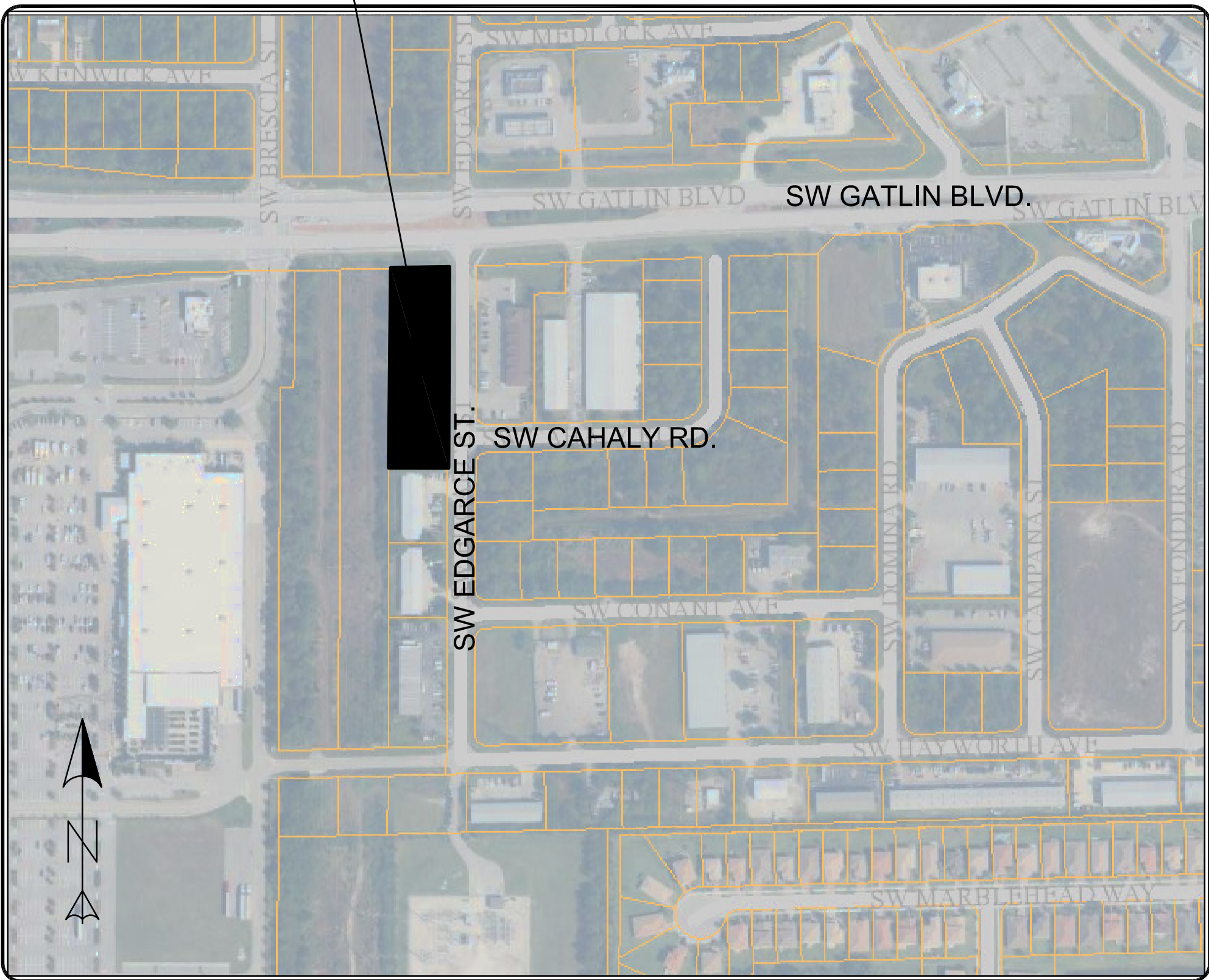
SECTION 14, TOWNSHIP 37 SOUTH, RANGE 39 EAST

PORT ST LUCIE

ST LUCIE COUNTY, FLORIDA

PROJECT LOCATION

LOCATION MAP



VICINITY MAP

INDEX OF SHEETS

1. COVER
2. LAND CLEARING AND EROSION PLAN
3. HORIZONTAL CONTROL PLAN
4. STRIPING AND SIGNAGE PLAN
5. ROADWAY PAVING, GRADING, & DRAINAGE PLAN
6. ROADWAY PAVING, GRADING, & DRAINAGE DETAILS
7. SIDEWALK CONSTRUCTION PLAN
8. UTILITY PLAN
9. GRINDER STATION DETAILS
10. STORMWATER POLLUTION PREVENTION PLAN
11. SPECIFICATIONS

**BID SET
NOT FOR
CONSTRUCTION**

ALL ELEVATIONS SHOWN HERE REFERENCE THE
NORTH AMERICAN VERTICAL DATUM NAVD88

P14 - 019
PSLUSD #5192

(DATE)
R.J. KENNEDY, P.E.
#56218
1934 TUCKER COURT
FT. PIERCE, FL 34950
phone: 772-462-2455

**ENGINEERING DESIGN
& CONSTRUCTION, INC.**
1934 TUCKER COURT
FT. PIERCE, FL 34950
phone: 772-462-2455
fax: 772-462-2454

BOARD OF PROFESSIONAL ENGINEERS
CERTIFICATE OF AUTHORIZATION NUMBER 9935