

PROPOSED ORTHODONTIST OFFICE FOR:

DR. VAKANI

2196 SW GATLIN BLVD

PORT ST LUCIE, FLORIDA

SHEET INDEX:

ARCHITECTURAL / STRUCTURAL

- CS CODE COMPLIANCE / SHEET INDEX / LOAD CALCS.
- A1 FLOOR PLAN & SCHEDULES
- A2 BUILDING ELEVATIONS / SECTION / DETAILS
- A3 DETAILS / INTERIOR ELEVATIONS / WALL SECTIONS
- A4 REFLECTED CEILING PLAN / ROOF PLAN / DETAILS
- A5 FOUNDATION PLAN / ROOF FRAMING PLAN / NOTES / SCHEDULES & WALL SECTION
- A6 STRUCTURAL NOTES / DETAILS

M.E.P.

- M1 MECHANICAL NOTES / SCHEDULES / DETAILS
- M2 MECHANICAL FLOOR PLAN & NOTES
- M3 MECHANICAL DETAILS
- E1 ELECTRICAL NOTES / SPECIFICATIONS / LEGENDS
- E2 POWER / LIGHTING / DATA PLAN
- E3 ELECTRICAL SCHEDULES & RISER
- E4 MISC DETAILS
- P1 PLUMBING SPECIFICATIONS / SCHEDULES / NOTES
- P2 WATER SUPPLY PLAN & NOTES
- P3 AIR / VAC SUPPLY PLAN & NOTES
- P4 SANITARY PLAN & NOTES
- P5 PLUMBING RISERS
- P6 PLUMBING DETAILS

FLORIDA BUILDING CODE 2014
DESIGN PRESSURES FOR OPENINGS

BUILDING DATA				JOB INFORMATION			
Wind Velocity (mph)	160	Importance Factor	1.0	Company	GRANFIELD ARCHITECTS		
Exposure Category	B	Exposure Coefficient	0.18	Prepared By	STEWART GRANFIELD		
Internal Pressure Coefficient	+0.18	Mean Roof Height (ft)	20.03	Client Name	DR. VAKANI ORTHODONTIST OFFICE		
Mean Roof Height (ft)	20.03	Building Length (ft)	126.00	Job Description	ORTHODONTIST OFFICE		
Building Length (ft)	126.00	Roof Slope (G/12)	2:1	Job Number	11-523		

Width of Edge Strip (S) in Feet = 3

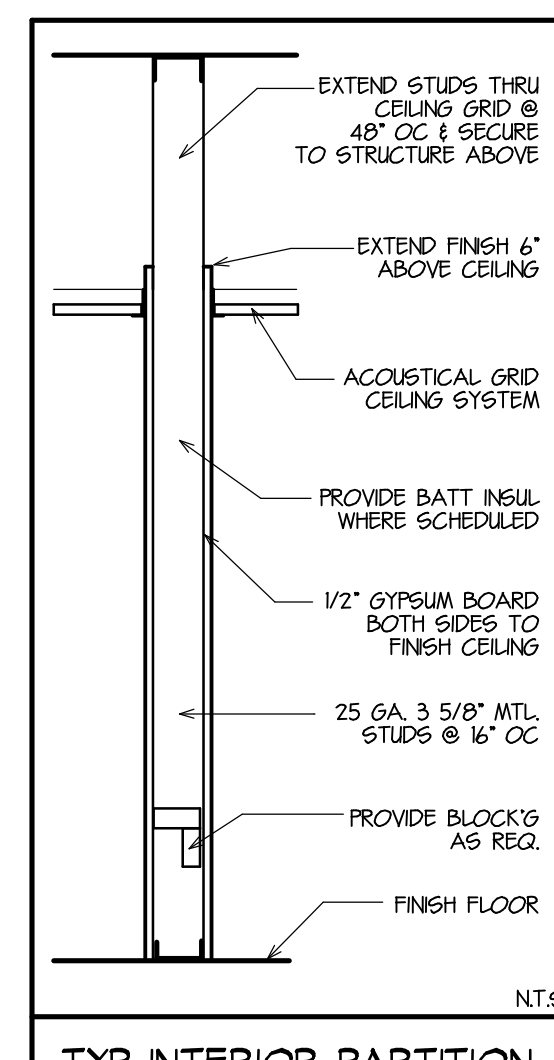
OPENING MARK	OPENING DESCRIPTION	LOCATION ZONE	OPENING ELEV (ft)	OPENING DIMENSIONS WIDTH (ft) / HEIGHT (ft)	MAXIMUM POSITIVE PRESSURE (psf)	MAXIMUM NEGATIVE PRESSURE (psf)
1	STOREFRONT DOOR	4		6 / 8	412	-451
2	STOREFRONT DOOR	4		6 / 8	412	-451
3	H/H DR	4		3 / 8	440	-473
WINDOWS						
A	FIXED WINDOW	4		2.66 / 5	440	-473
A	FIXED WINDOW	5		2.66 / 4	412	-451
B	FIXED WINDOW	4		6 / 4	412	-451
C	FIXED WINDOW	4		5.33 / 5	412	-451

PRODUCT APPROVAL AFFIDAVIT

PROJECT TITLE: DR. VAKANI ORTHODONTIST OFFICE
DESIGN PROFESSIONAL NAME A/E: GRANFIELD ARCHITECTS

OWNER'S NAME: DR. VAKANI
JOB SITE LOCATION: PORT ST LUCIE

PRODUCT	MODEL #	MANUFACTURER	EVALUATION AGENCY	EXPIRATION DATE	NOA / CERT
WINDOWS	IR-500 ALUM STOREFRONT	KAWNEER CO.	MIAMI-DADE	4/15/19	14-0430228
EXIT DOORS	STEEL-CRAFT H SERIES STL OUTSWING	SCHLAGE LOCK CO.	MIAMI-DADE	5-5-20	15-093003
	"350R" ALUM OUTSWING DR	KAWNEER CO.	MIAMI-DADE	2/8/17	14-060202
GARAGE DOORS	N/A				
SKYLIGHTS	N/A				
SHUTTERS	N/A				
ROOF'S MATERIALS	BUILT-UP-ROOF	CERTAIN TEED CORP	MIAMI-DADE	6/19/18	13-020413
	ENGLERT 2000 ALUM PANELS	AMETCO, INC.	MIAMI-DADE	10/10/18	13-042407
PANEL WALLS	N/A				
STRUCTURAL COMPONENTS	N/A				
NEW ALTERNATIVE MATERIALS	N/A				



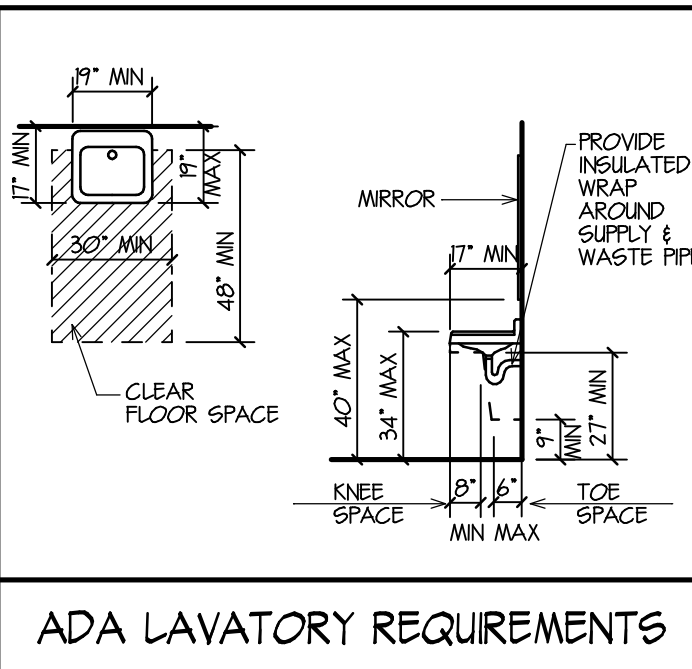
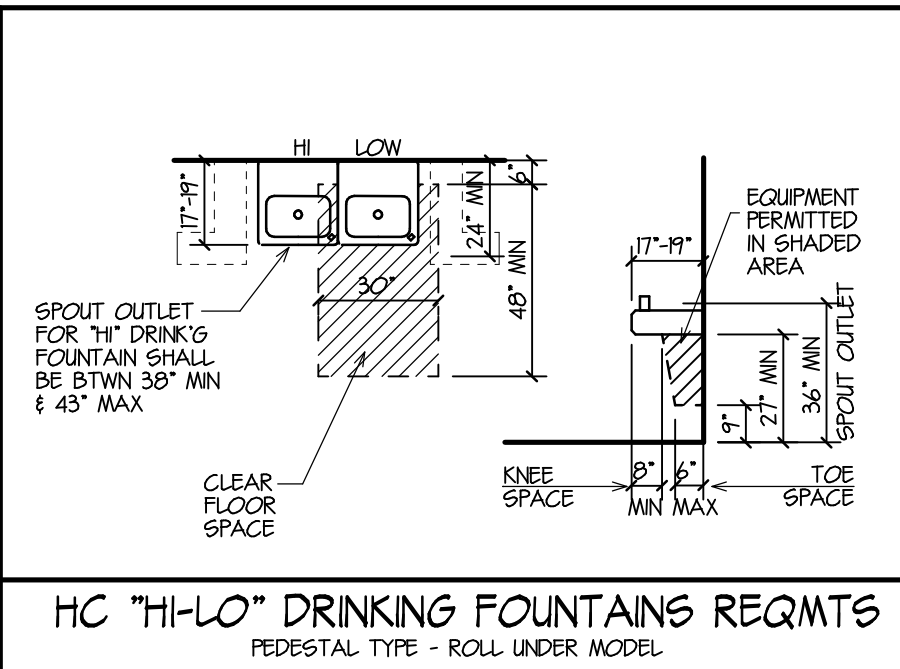
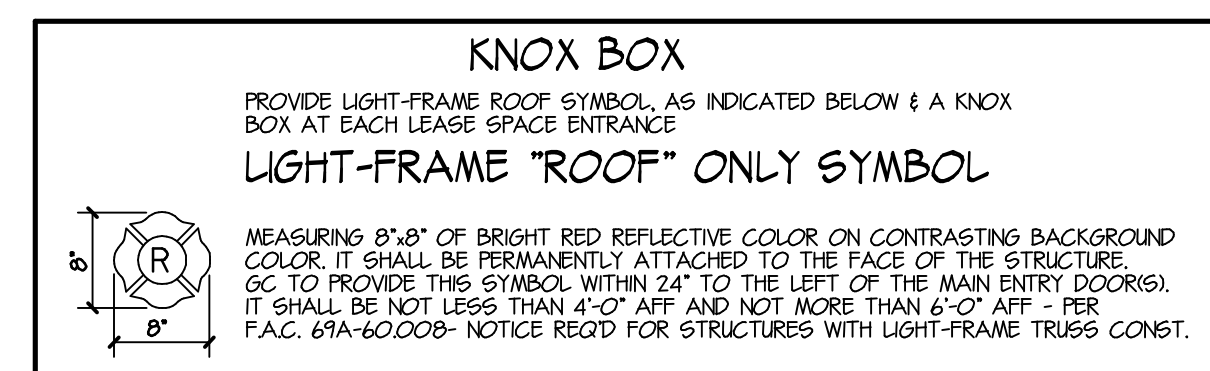
COMPONENT & CLADDING PRESSURES

ZONE #1	ZONE #2	ZONE #3	ZONE #4	ZONE #5
-54.9	-86.2	-175	-37.6	-68.9
N/A	N/A	N/A	37.6	37.6

OVERHANGS: N/A, N/A. ZONES #4 & #5 ARE HORIZ. WALL LOADS. a = 3'-0"

MAIN WIND FORCE RESISTANCE SYSTEM (MWFRS)

DIRECTION	ZONE	HORIZ LOAD WALLS	HORIZ LOAD ROOF	VERT LOAD ROOF	VERT LOAD OVERHANGS
TRANSVERSE CASE A	END	40.6 A	-211 B	-48.8 E	-68.3
	INTERIOR	26.9 C	-12.5 D	-34.0 G	-53.5
LONGITUDINAL CASE B	END	40.6 A	-211 B	-48.8 E	-68.3
	INTERIOR	26.9 C	-12.5 D	-34.0 G	-53.5



PROJECT INFORMATION

CODE: FBC 2014

2196 SW GATLIN BLVD.
PROJECT ADDRESS: PORT ST LUCIE, FL. PROJECT NAME: VAKANI ORTHODONTIC

ARCHITECT / ENGINEER: GRANFIELD ARCHITECTS

TYPE OF CONSTRUCTION: CBS FRAME _____

BUILDING DESIGNED: ENCLOSED OPEN _____ PARTIALLY ENCLOSED _____

WIND SPEED @ SECOND GUST: 150 MPH. 160 MPH

EXPOSURE: B

INTERNAL PRESSURE COEFFICIENT: 0.18 +0.18 PSF

IMPORTANCE FACTOR: 1.0 BUILDING CATEGORY: 3 (1,2,3 OR 4)

GARAGE DOOR DESIGN PRESSURE: _____ PSF (POSITIVE) _____ PSF (NEGATIVE)

DOOR DESIGN PRESSURE (INT ZONE): _____ PSF _____ PSF (END ZONE) _____ PSF _____ PSF

WINDOW DESIGN PRESSURE (INT ZONE): _____ PSF _____ PSF (END ZONE) _____ PSF _____ PSF

SHUTTERS: YES _____ NO

IMPACT RESISTANT ASSEMBLY: YES NO _____

CODE SUMMARY

- APPLICABLE CODE BOOKS
 - 2014 FLORIDA BUILDING CODE
 - 2010 FLORIDA MECHANICAL CODE
 - 2014 FLORIDA PLUMBING CODE
 - 2011 NATIONAL ELECTRIC CODE
 - 2014 FLORIDA ACCESSIBILITY CODE
 - 2014 FLORIDA ENERGY CODE
 - 2009 FLORIDA FIRE PREVENTION CODE BASED ON NFPA-1 & NFPA 101
- OCCUPANCY REQUIREMENTS
 - OCCUPANCY CLASSIFICATION: B - BUSINESS
 - OCCUPANCY SEPERATION: N/A (SINGLE TENANT)
- TYPE OF CONSTRUCTION
 - BUILDING TYPE: TYPE V GROUP B
 - ALLOWABLE BUILDING AREA: 9,000sq Ft. MAX.
 - ALLOWABLE HEIGHT: 40 FT. MAX.
- MEANS OF EGRESS REQUIREMENTS
 - MAX. TRAVEL DISTANCE: 200 FT. MAX.
 - OCCUPANT LOAD: 40 MAX.
 - NUMBER OF EXITS: 2 MIN.
 - CORRIDOR WIDTH: 44" MIN.
 - EGRESS OPENING WIDTH: 32 inches MIN.
 - EXIT STAIR WIDTH: 44 inches MIN.

AREA CALCULATIONS

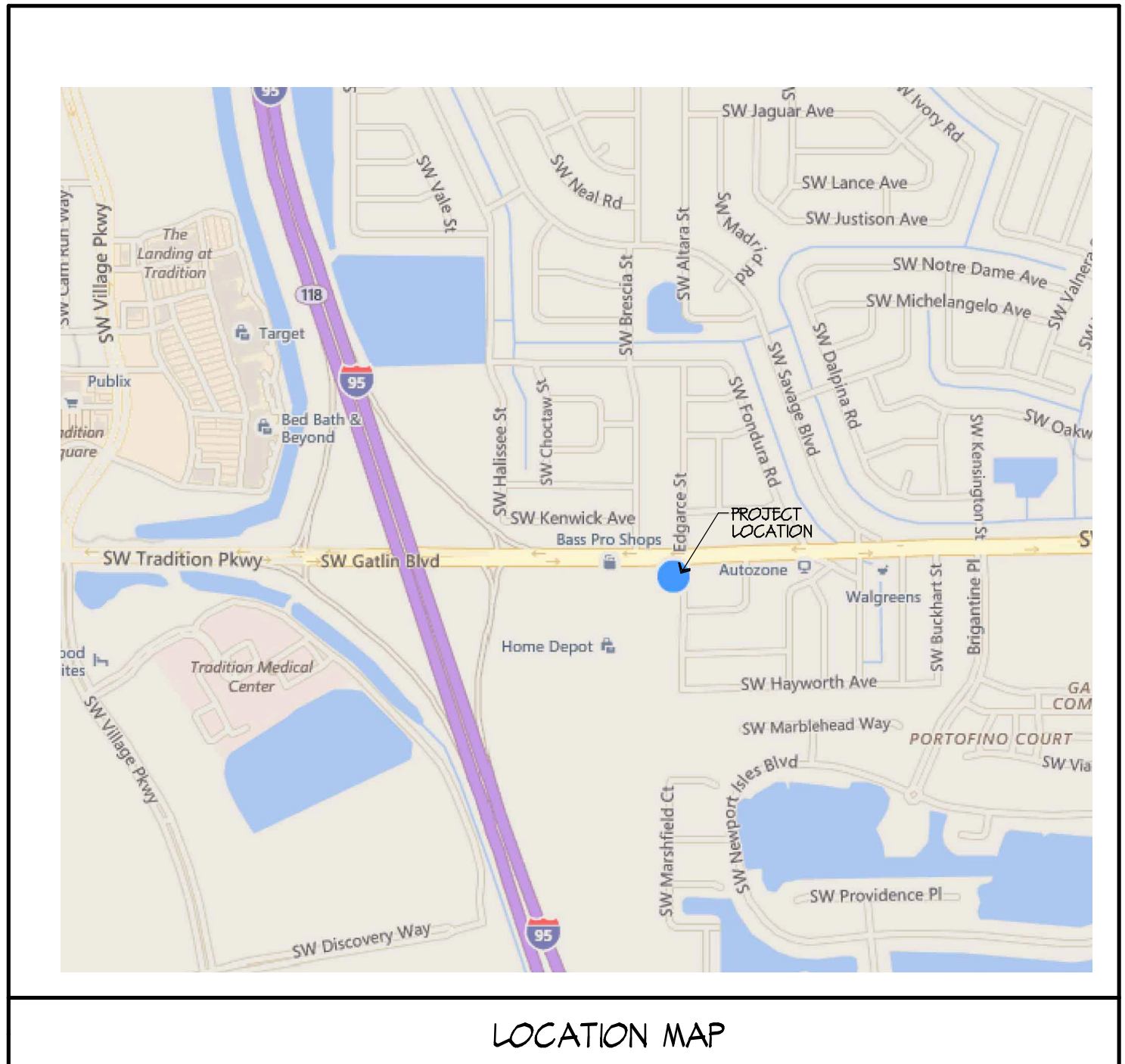
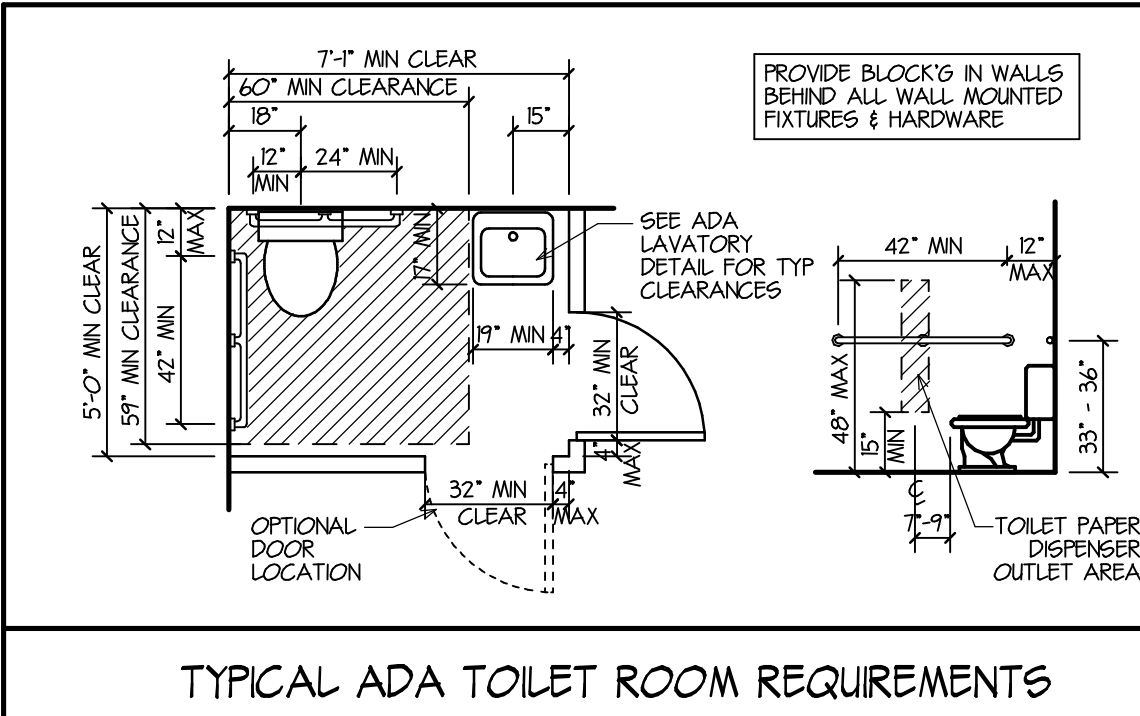
ENCLOSED _____ SQFT

ROOFED PORTICOS _____ 272 SQFT

TOTAL ROOFED SQ FT _____ 4172 SQFT

SYMBOL LEGEND

- (1-A-1) DETAIL NUMBER
TYPICAL DETAIL BUBBLE
SHEET NUMBER
- (6-A-1) SECTION CULLOUT BUBBLE
- (3) WINDOW DESIGNATION
- (4) DOOR DESIGNATION
- (5) ROOM DESIGNATION
- (O) KEYED NOTE
- (O/A/O) ELEVATION MARK
- (B/A/M/C/D) DETAIL NUMBER
INTERIOR ELEVATION MARK
SHEET NUMBER
- T.O.B. TOP OF BEAM
- T.O.P. TOP OF PARAPET
- T.O.P.L. TOP OF PLATE
- M/WI MASONRY WALL TYPE
- F/WI FOOTING WALL TYPE
- C-1 COLUMN TYPE
- B-1 BEAM TYPE
- (+/-) FIN FL BENCHMARK



COMMERCIAL - RESIDENTIAL - INSTITUTIONAL - EDUCATION

GRANFIELD ARCHITECTS

463 NE JENSEN BEACH BLVD
JENSEN BEACH, FLORIDA 34957

PHONE: 772-289-6032
FAX: 772-289-9850

PROPOSED ORTHODONTIST'S OFFICE FOR:

DR. VAKANI

PORT ST. LUCIE, FLORIDA

2196 SW GATLIN BLVD

SEAL

REVISIONS

BD SET NOT FOR CONSTRUCTION

JOB NO. B-564

DATE 5-4-16

DRAWN BY JB

CHECKED BY SMG

SHEET

CS

OF