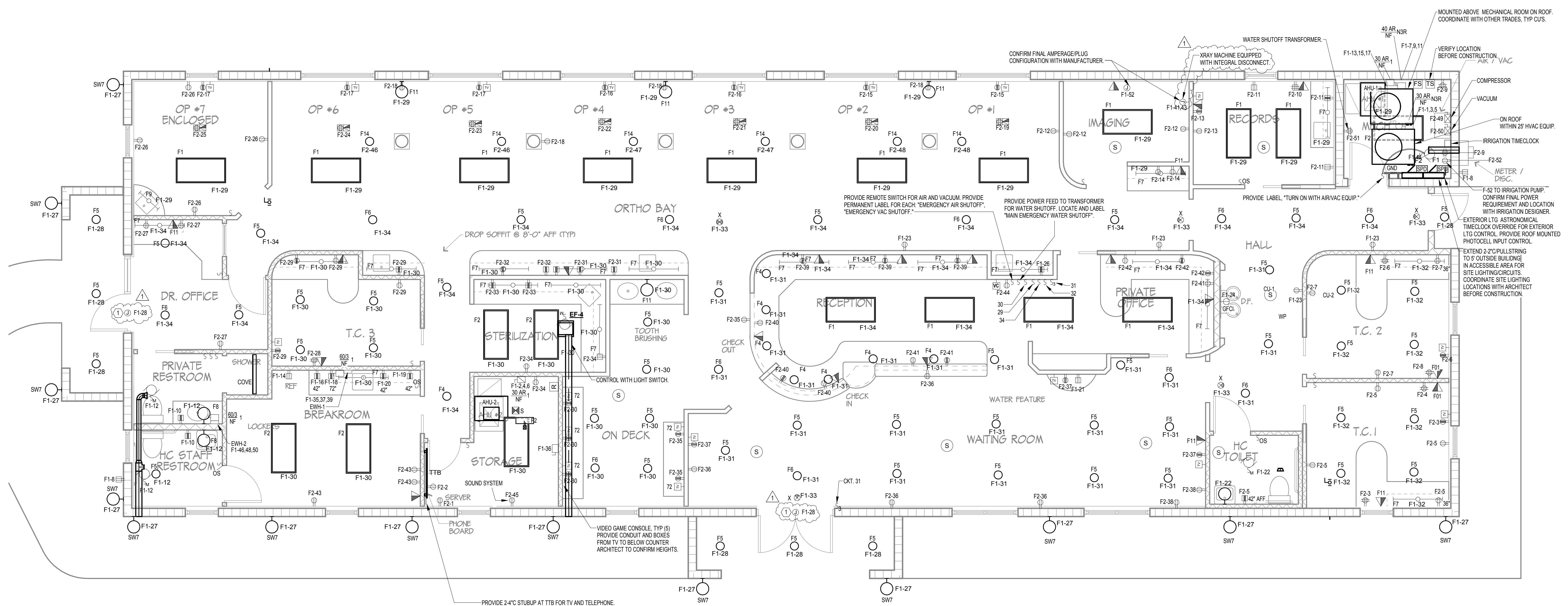


**KEYED NOTES:**

- 1 PROVIDE J-BOX AND WIRING FOR SIGNAGE ON ENTRY. COORDINATE FINAL LOCATION WITH ARCHITECTURAL ELEVATIONS.



Electrical Plan  
1/4" = 1'-0"

PROVIDE 2-1/2" STUBUP AT TTB FOR TV AND TELEPHONE. ROUTE CONDUIT UNDERGROUND TO SERVICE PROVIDER DEMARCATION POINT(S). VERIFY INSTALLATION REQUIREMENTS WITH SERVICE PROVIDER(S) BEFORE CONSTRUCTION.

REVISIONS	
REVISION 1	2/4/16

JOB NO.	11-523
DATE	01.28.16
DRAWN BY	BWM
CHECKED BY	SBC

C:\Users\oljan.sauro\Desktop\REV\VT SHIT\Rev\2016\05\15\85\_Dr Vakani Rouse\_MEF\_Central\_1\16.rvt 4/25/2016 2:02:30 PM