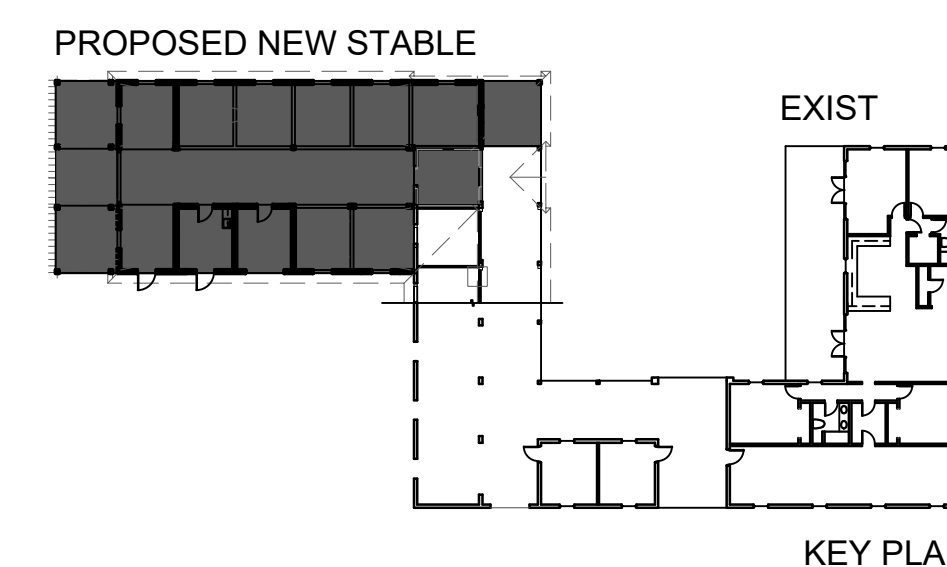


STABLE EXPANSION

15460 IMPERIAL POINT LANE Wellington, FL 33414



SCOPE OF WORK
WORK INCLUDES CONSTRUCTION OF
A ONE STORY STABLE ADDITION

LIST OF DRAWINGS

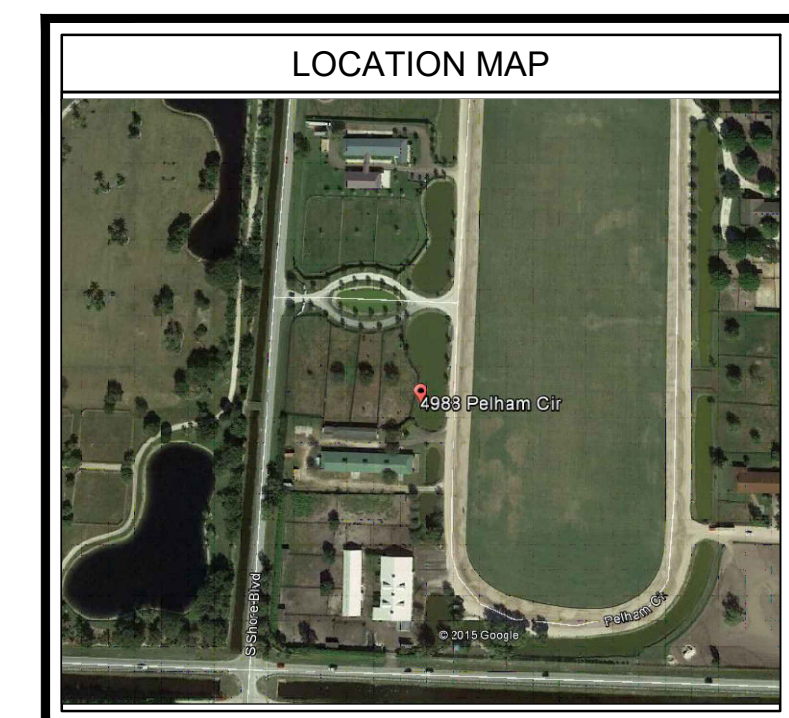
A-1 COVER
A-2 FOUNDATION PLAN
A-3 FLOOR PLAN
A-4 TIE BEAM PLAN
A-5 ROOF FRAMING
A-6 NOTES
A-7 ELEVATIONS
A-8 SECTION

M-1 MECHANICAL
E-1 ELECTRICAL PLAN
P-1 PLUMBING

LEGAL DESCRIPTION

AR SETBACK

SQUARE FOOTAGE



CODE

- FLORIDA BLDG CODE 2014 W/ SUPPLEMENTS
- FLORIDA EXIST. BLDG CODE 2014
- FLORIDA FIRE PREV CODE 2012 5TH EDITION
- NEC 2011

STABLE EXPANSION
15460 IMPERIAL POINT
LANE
WELLINGTON, FL

Revisions:

ALL IDEAS, DESIGNS, ARRANGEMENTS AND PLANS INDICATED OR REPRESENTED BY THIS DRAWING ARE OWNED BY RICHARD BARNES AND THE PROPERTY OF THIS OFFICE AND WERE CREATED, EVALUATED AND DEVELOPED FOR USE ON, AND IN CONNECTION WITH THE SPECIFIED PROJECT. NONE OF SUCH IDEAS, DESIGNS, AND ARRANGEMENTS OR PLANS SHALL BE USED BY OR DISCLOSED TO ANY PERSON, FIRM OR CORPORATION FOR ANY PURPOSE WHATSOEVER WITHOUT WRITTEN PERMISSION OF RICHARD BARNES. WRITTEN DIMENSIONS ON THESE DRAWINGS SHALL HAVE PRECEDENCE OVER SCALE DIMENSIONS. CONTRACTOR SHALL VERIFY AND BE RESPONSIBLE FOR ALL DIMENSIONS AND CONDITIONS ON THE JOB AND THIS OFFICE MUST BE NOTIFIED OF ANY VARIATIONS FROM THE DIMENSIONS AND CONDITIONS AS SHOWN ON THESE DRAWINGS.

RICHARD BARNES
ARCHITECTURAL
DESIGN SERVICES LLC
1807 E. TER. DR.
LAKE WORTH, FL
33460
(561) 574-1027

DRAWN
CHECKED
DATE
4-26-16
SCALE
AS NOTED
FOR PERMIT

SHEET
A1
OF **SHEETS**