

CODE  
 ■ FLORIDA BLDG CODE 2014 W/ SUPPLEMENTS  
 ■ FLORIDA EXIST. BLDG CODE 2014  
 ■ FLORIDA FIRE PREV CODE 2012 5TH EDITION  
 ■ NEC 2011

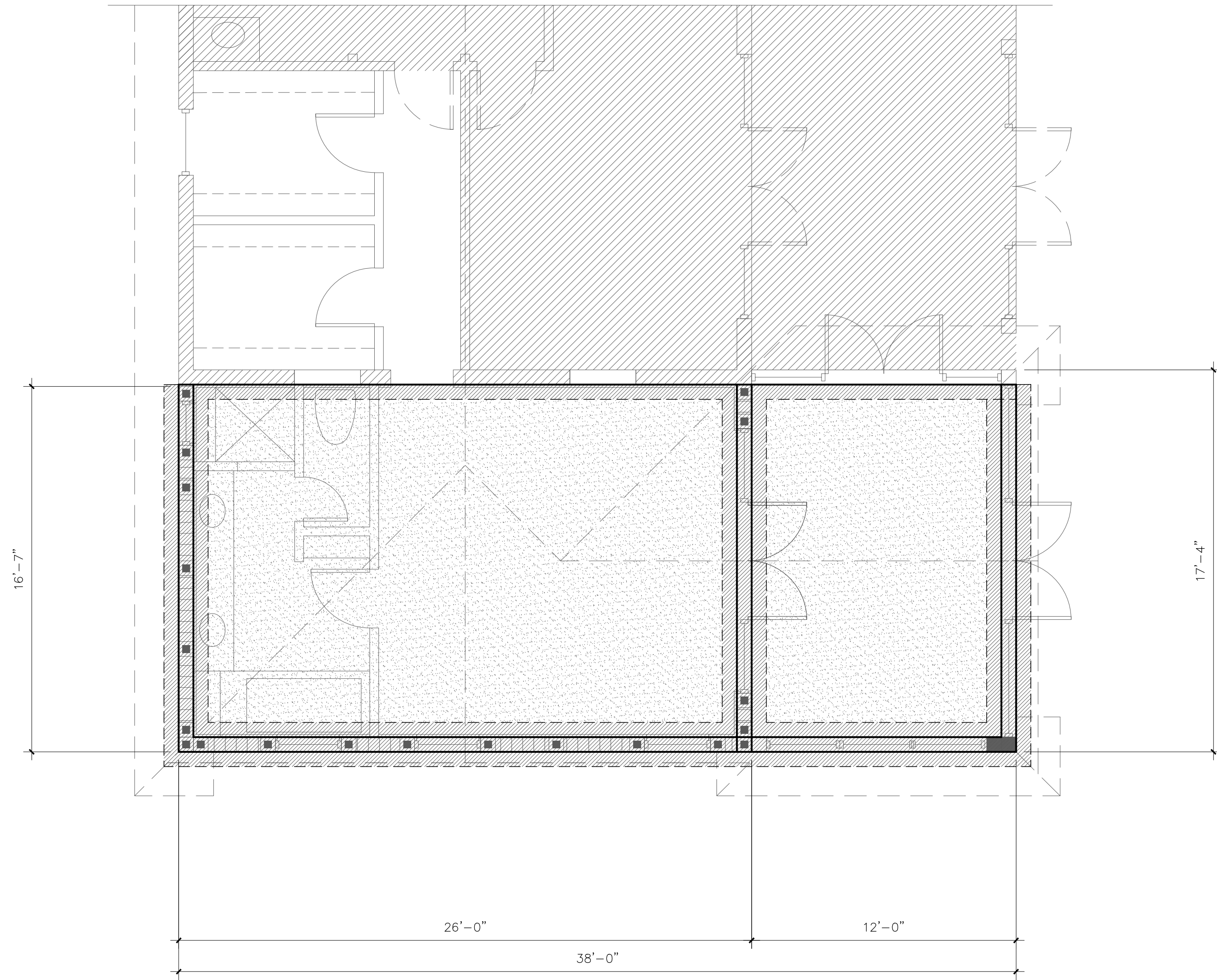
BEDROOM EXPANSION  
 13460 IMPERIAL POINT LANE  
 WELLINGTON, FL

Revisions:  
 \_\_\_\_\_  
 \_\_\_\_\_  
 \_\_\_\_\_  
 \_\_\_\_\_  
 \_\_\_\_\_

ALL IDEAS, DESIGNS, ARRANGEMENTS AND PLANS INDICATED OR REPRESENTED BY THIS DRAWING ARE OWNED BY RICHARD BARNES AND THE PROPERTY OF THIS OFFICE AND WERE CREATED, EVALUATED AND DEVELOPED FOR USE ON, AND IN CONNECTION WITH THE SPECIFIED PROJECT. NONE OF SUCH IDEAS, DESIGNS, AND ARRANGEMENTS OR PLANS SHALL BE USED BY OR DISCLOSED TO ANY PERSON, FIRM OR CORPORATION FOR ANY PURPOSE WHATSOEVER WITHOUT WRITTEN PERMISSION OF RICHARD BARNES. WRITTEN DIMENSIONS ON THESE DRAWINGS SHALL HAVE PRECEDENCE OVER SCALE DIMENSIONS. CONTRACTOR SHALL VERIFY AND BE RESPONSIBLE FOR ALL DIMENSIONS AND CONDITIONS ON THE JOB AND THIS OFFICE MUST BE NOTIFIED OF ANY VARIATIONS FROM THE DIMENSIONS AND CONDITIONS AS SHOWN ON THESE DRAWINGS.

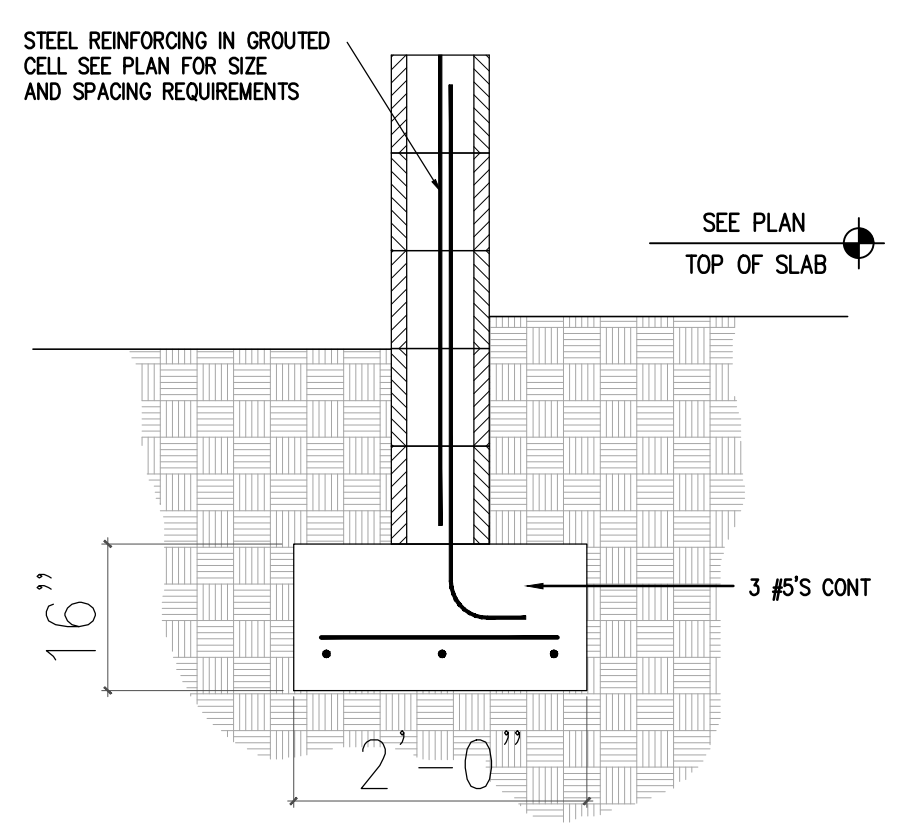
RICHARD BARNES ARCHITECTURAL DESIGN SERVICES LLC  
 1807 E. TER. DR. LAKE WORTH, FL 33460  
 (561) 574-1027

DRAWN \_\_\_\_\_  
 CHECKED \_\_\_\_\_  
 DATE 4-26-16  
 SCALE AS NOTED FOR PERMIT  
 SHEET A2  
 OF \_\_\_\_\_ SHEETS



INSPECTOR NOTE  
 NEW STRUCTURAL COMPONENTS WERE DESIGNED BASED ON THE FBC 2014 BUILDING CODE AND ASCE 7-10, 170 MPH (3 SEC), EXP. C.

MASONRY WALL NOTES  
 WALL SEGMENTS SHALL BE REINFORCED WITH 9 GA. GALVANIZED LATERAL REINFORCING @ 16" O.C. HORIZONTAL. EXTEND REINFORCING 6" INTO POURED ELEMENTS AND AROUND ENCASED STEEL.  
 ADJACENT TO ANY EXTERIOR WALL OPENINGS PLACE 1 #5 VERTICAL IN CELL GROUDED SOLID FULL HEIGHT.  
 ALL MASONRY REINFORCED CELLS SHALL BE FILLED WITH 3000 PSI GROUT MIX.



EXTERIOR STEM-FOOTING SF -1

FOUNDATION PLAN 1  
 SCALE: 1/8" = 1'-0" (A-2)

FOOTING SCHEDULE					
MARK	WIDTH	LENGTH	THICKNESS	BOTTOM REINFORCING	REMARKS
SF-1	24"	CONT.	16"	(3) #5	SPREAD FOOTING
TE-1	8"	CONT.	8"	(1) #5	THICKENED EDGE

COLUMN SCHEDULE			
MARK	SIZE & DESCRIPTION	BASE PLATE OR REINFORCEMENT	REMARK
(C1)	8"x8" CMU	(1) #5 LAP & TIE	TYP. U.O.N.
(C2)	8"x8"	(4) #5 VERT	WOOD POST TO MATCH EXIST