

CODE
 ■ FLORIDA BLDG CODE 2014 W/ SUPPLEMENTS
 ■ FLORIDA EXIST. BLDG CODE 2014
 ■ FLORIDA FIRE PREV CODE 2012 5TH EDITION
 ■ NEC 2011

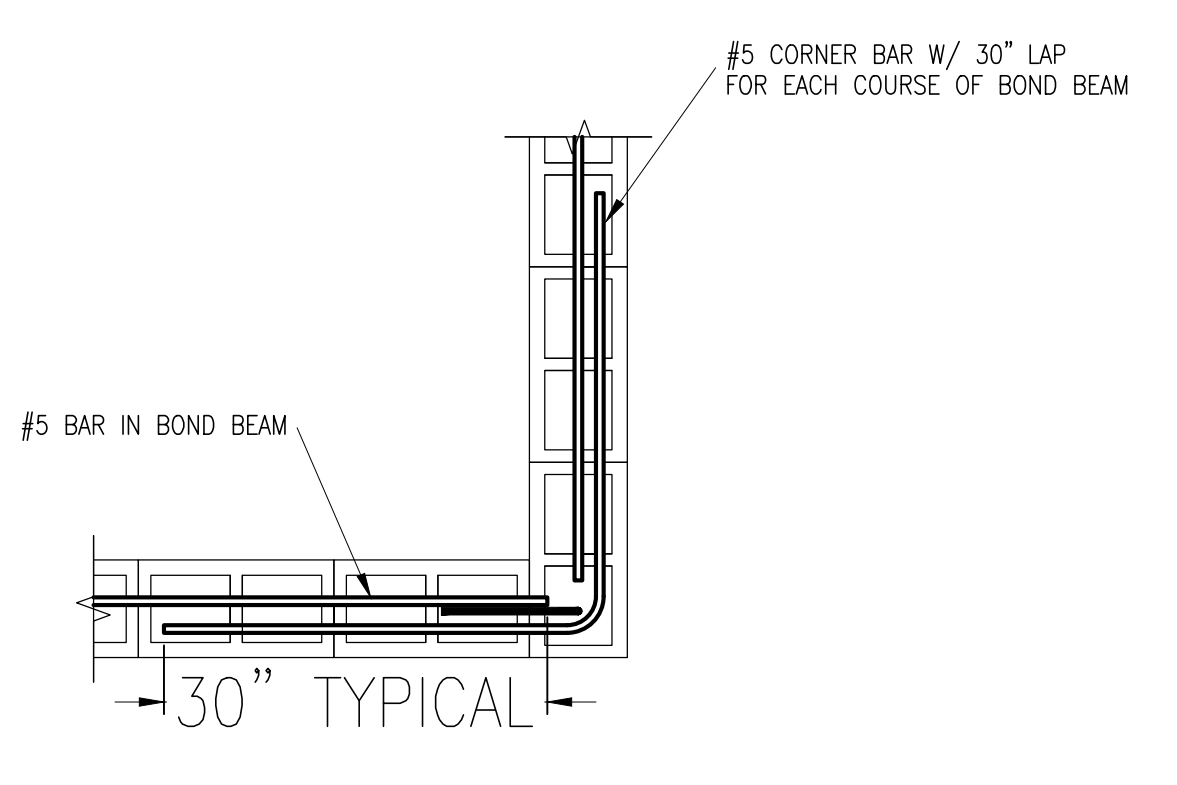
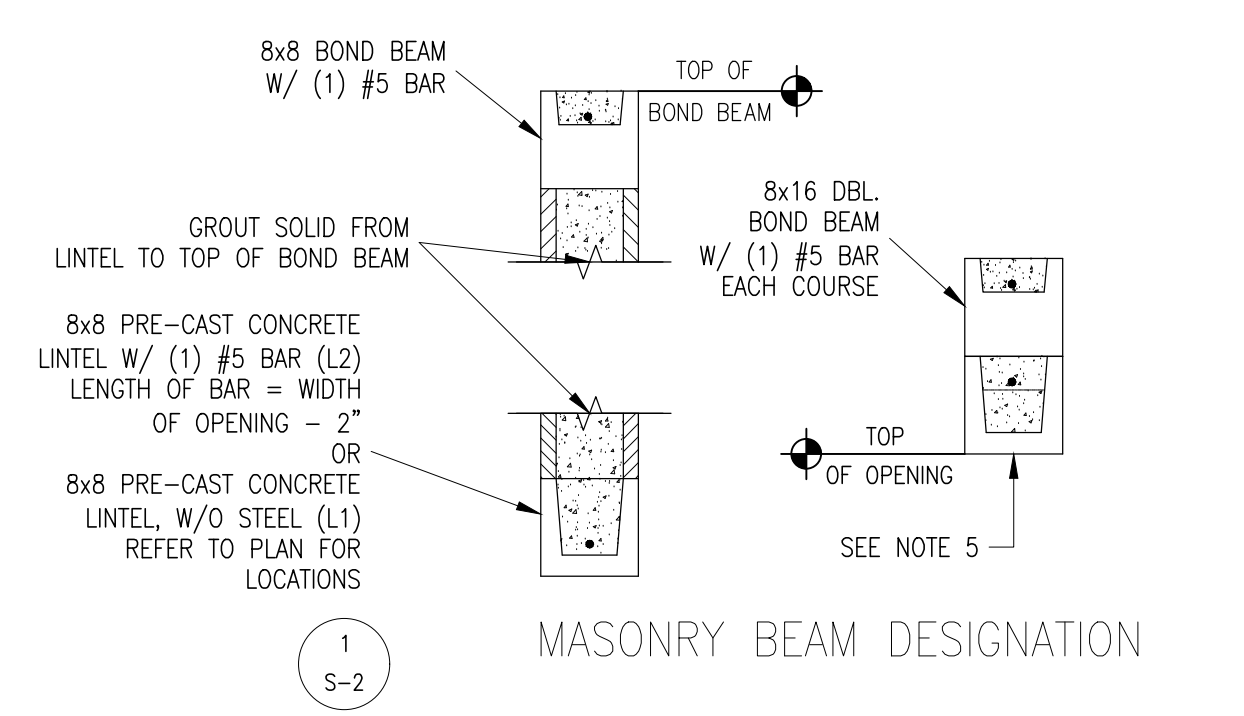
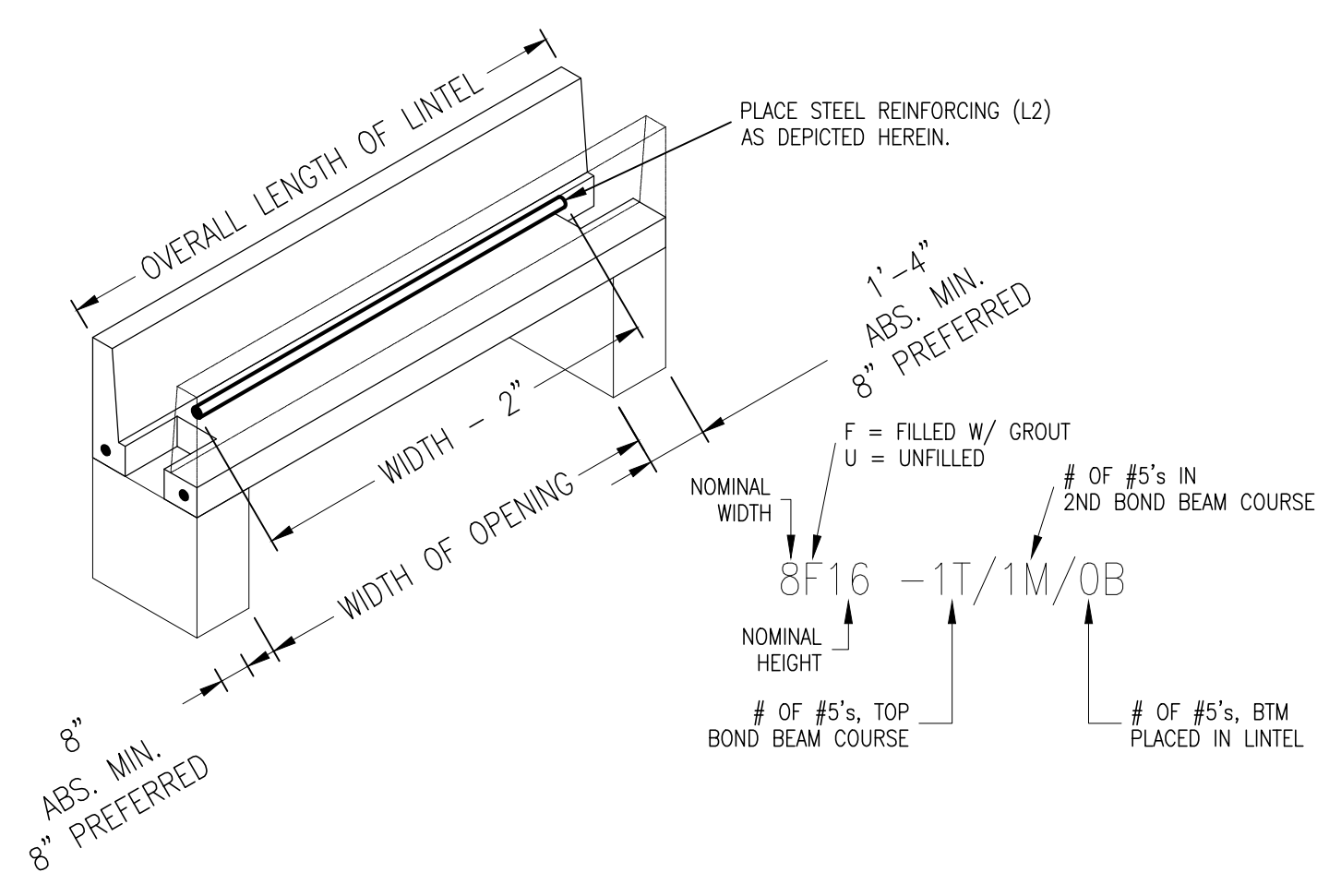
BEDROOM EXPANSION
 13460 IMPERIAL POINT LANE
 WELLINGTON, FL

Revisions:

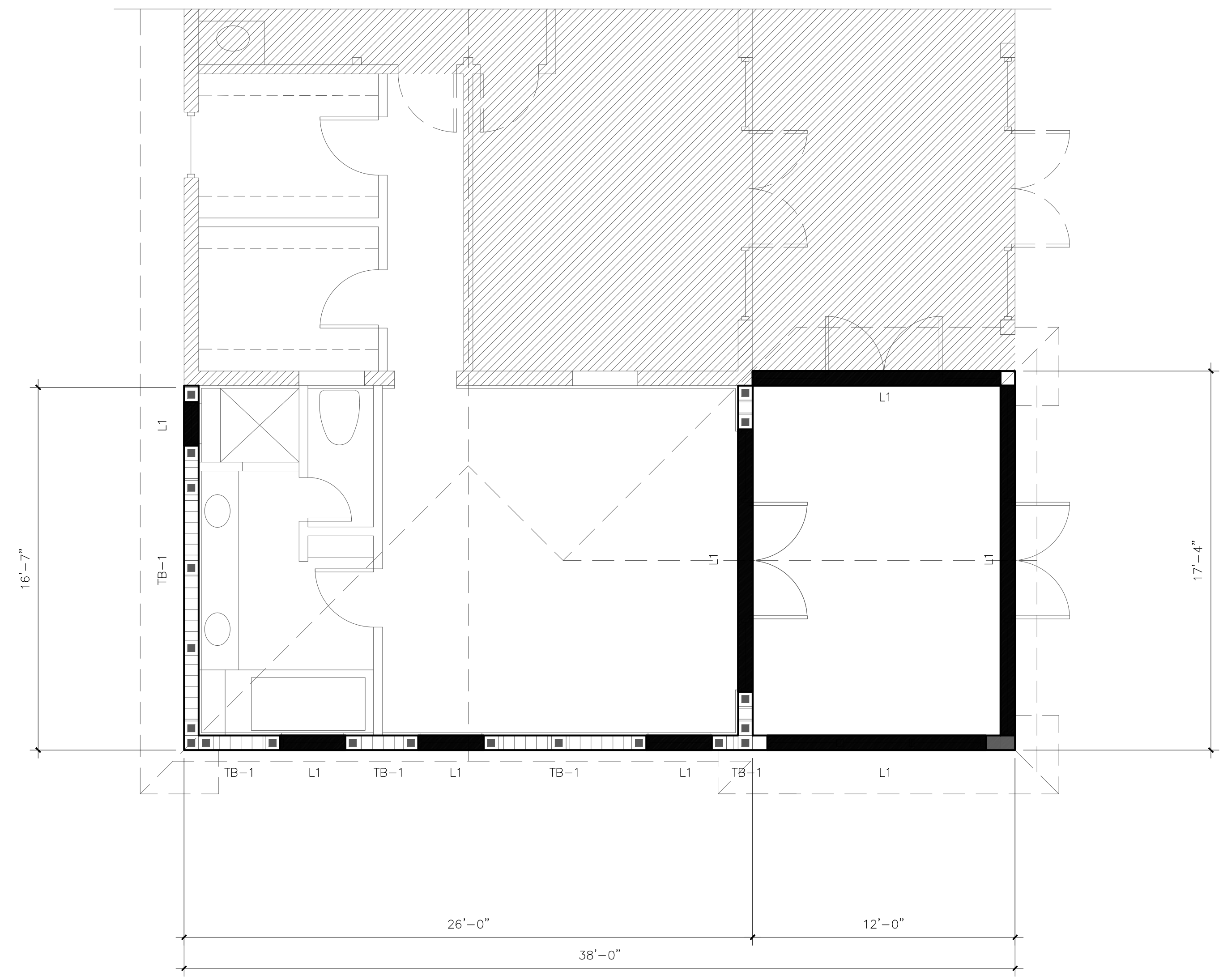
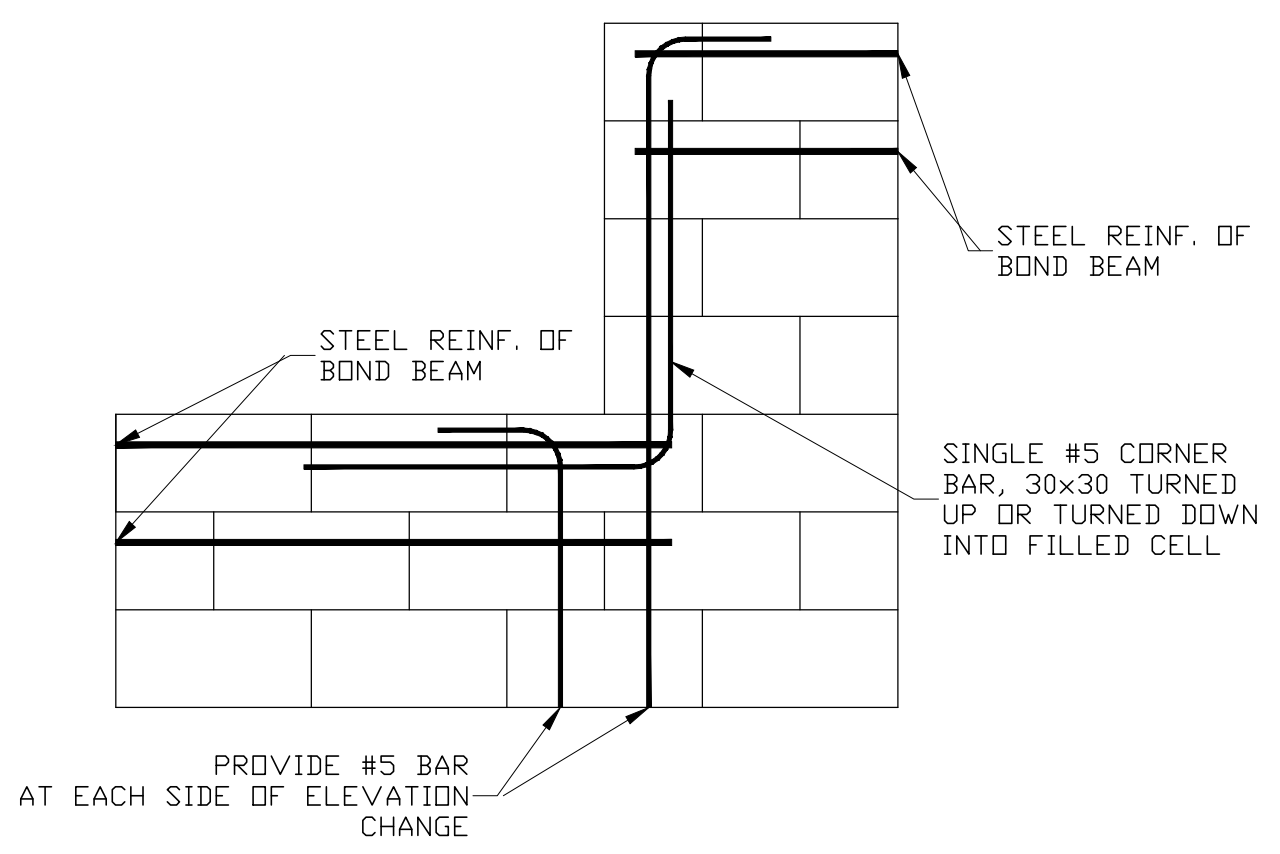
ALL IDEAS, DESIGNS, ARRANGEMENTS AND PLANS INDICATED OR REPRESENTED BY THIS DRAWING ARE OWNED BY RICHARD BARNES AND THE PROPERTY OF THIS OFFICE AND WERE CREATED, EVALUATED AND DEVELOPED FOR USE ON, AND IN CONNECTION WITH, THE SPECIFIED PROJECT. NONE OF SUCH IDEAS, DESIGNS, AND ARRANGEMENTS OR PLANS SHALL BE USED BY OR DECIDED TO ANY PERSON, FIRM OR CORPORATION FOR ANY PURPOSE WHATSOEVER WITHOUT WRITTEN PERMISSION OF RICHARD BARNES.
 WRITTEN DIMENSIONS ON THESE DRAWINGS SHALL HAVE PRECEDENCE OVER SCALE DIMENSIONS.
 CONTRACTOR SHALL VERIFY AND BE RESPONSIBLE FOR ALL DIMENSIONS AND CONDITIONS ON THE JOB AND THIS OFFICE MUST BE NOTIFIED OF ANY VARIATIONS FROM THE DIMENSIONS AND CONDITIONS AS SHOWN ON THESE DRAWINGS.

RICHARD BARNES ARCHITECTURAL DESIGN SERVICES LLC
 1807 E. TER. DR. LAKE WORTH, FL 33460
 (561) 574-1027

DRAWN _____
 CHECKED _____
 DATE 4-26-16
 SCALE AS NOTED
 FOR PERMIT _____
 SHEET
A4
 OF SHEETS



A CORNER REINFORCING OF BOND BEAM
 A-4 SCALE: 3/4" = 1'-0"



BEAM PLAN
 SCALE: 1/8" = 1'-0" 1 A-4

- NOTES TO THE INSPECTOR/CONTRACTOR
1. PLACE LINTEL ACROSS TOP OF OPENING.
 2. IF REQUIRED PLACE #5 BAR IN LINTEL, FOR L2 DESIGNATION ONLY.
 3. PLACE MASONRY UNITS AS REQUIRED TO ACHIEVE THE REQUIRED BEARING HEIGHT.
 4. THE LAST COURSE WILL BE A BOND BEAM WITH (1) #5 BAR CONTINUOUS AROUND STRUCTURE. A DOUBLE BOND BEAM MAY BE SPECIFIED SO THAT THEN THE LAST TWO COURSES ARE BOND BEAMS WITH A #5 BAR IN EACH COURSE.
 5. SHOULD THE DOUBLE BOND BEAM COINCIDE WITH A LINTEL THE BOTTOM COURSE OF BOND BEAM IS OMITTED AND A LINTEL IS PLACED. THE STEEL REINFORCING FOR THE BOTTOM BOND BEAM IS TO BE CONTINUOUS THROUGH THE TOP OF THE LINTEL.
 6. UNO COMPOSITE MASONRY BEAM IS TO BE NOT LESS THAN 16" DEEP.

MARK	SIZE	SCHEDULE	REMARK
BB-1	8" X 16"	2 5'S CONT.	EL 11'-0" AFF
BB-2	8" X 16"	2 5'S CONT.	EL 12'-0" AFF
BB-3	8" X 16"	2 5'S CONT.	EL 20'-0" AFF
BB-4	8" X 16"	2 5'S CONT.	EL 16'-0" AFF