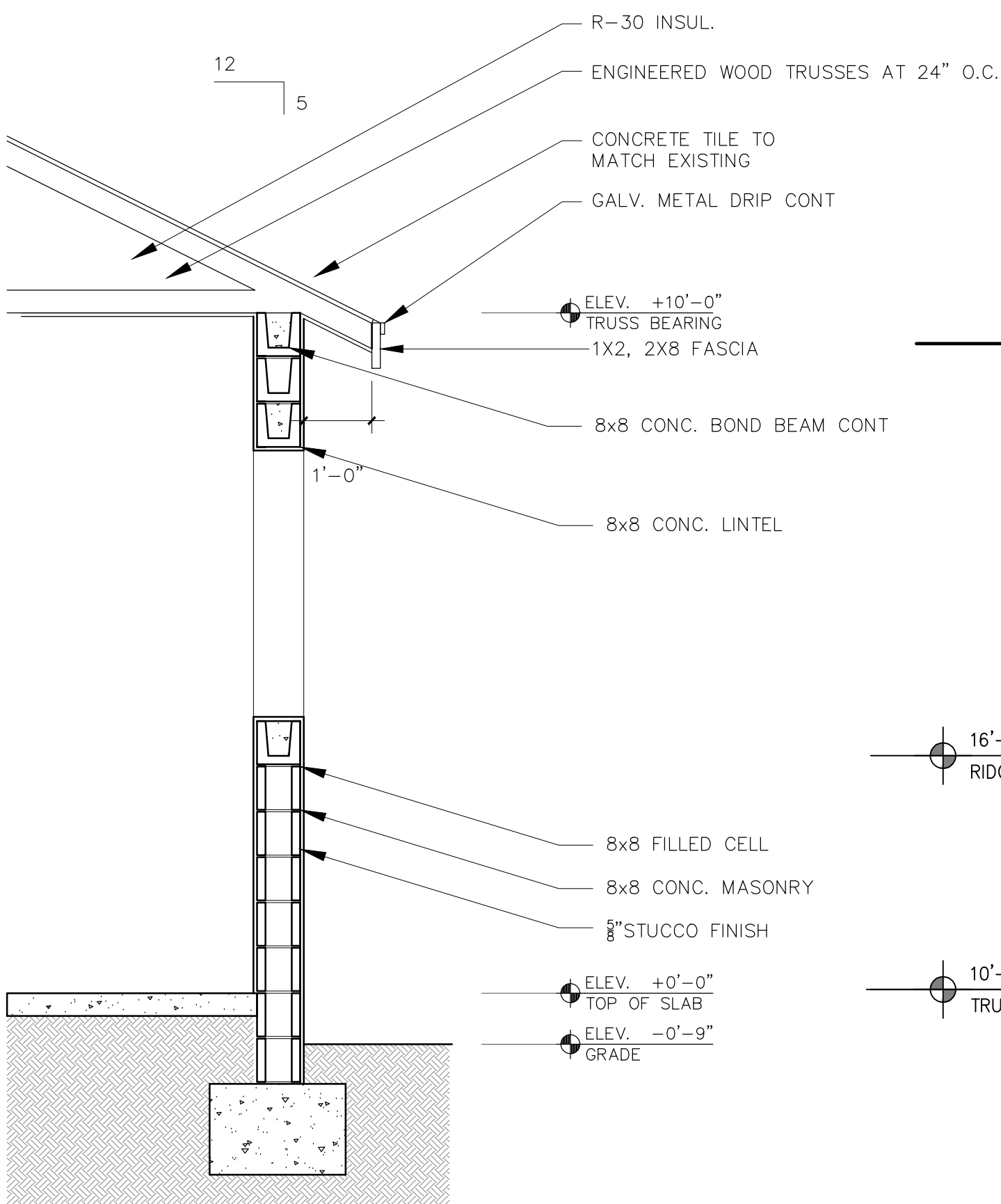
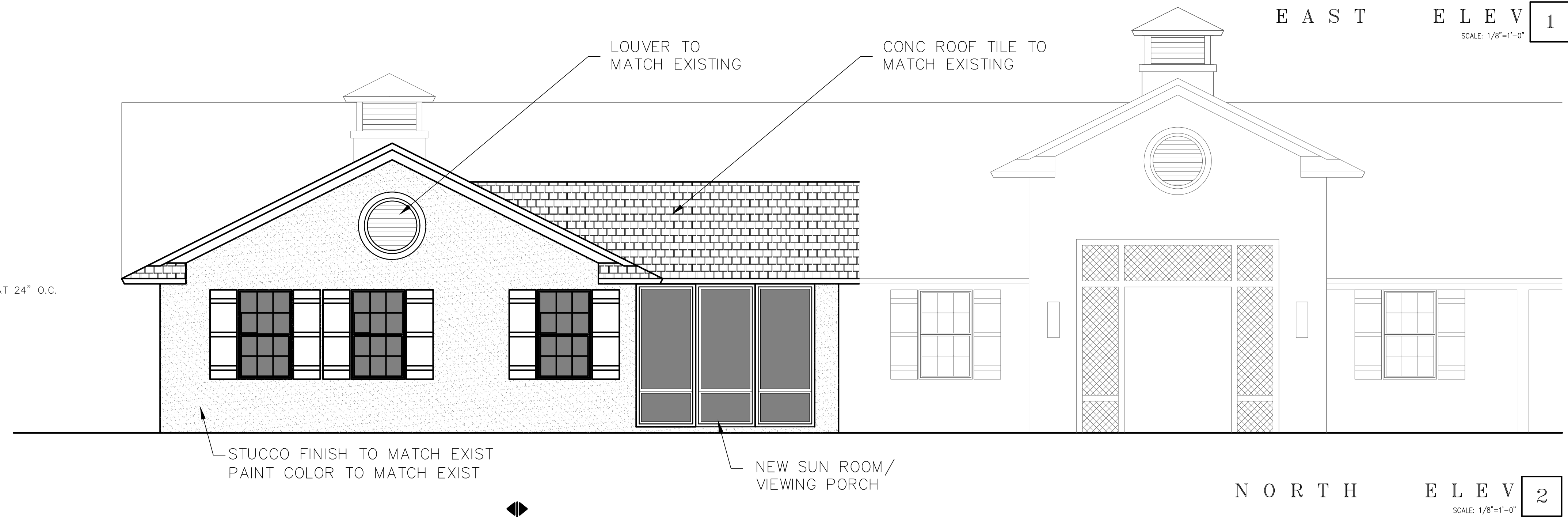
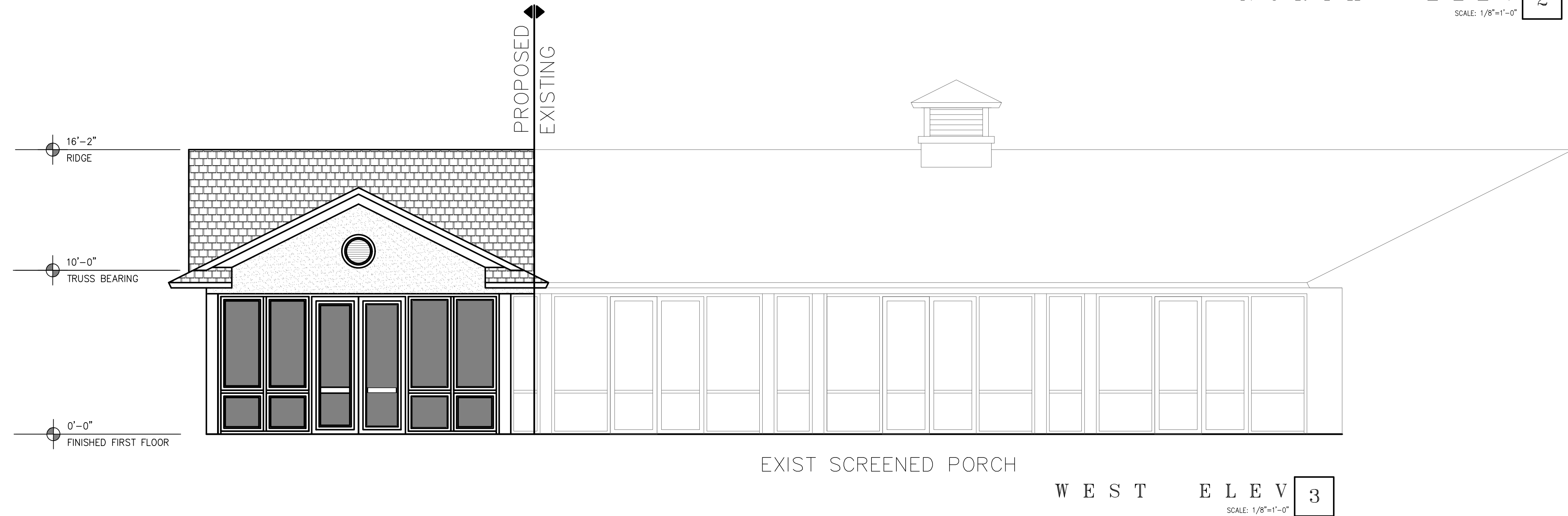


EAST ELEV 1
SCALE: 1/8"=1'-0"



TYP WALL SECTION 4
SCALE: 1/2"=1'-0"



CODE
 ■ FLORIDA BLDG CODE 2014 W/ SUPPLEMENTS
 ■ FLORIDA EXIST. BLDG CODE 2014
 ■ FLORIDA FIRE PREV CODE 2012 5TH EDITION
 ■ NEC 2011

BEDROOM EXPANSION
 13460 IMPERIAL POINT LANE
 WELLINGTON, FL

Revisions:

ALL IDEAS, DESIGNS, ARRANGEMENTS AND PLANS INDICATED OR REPRESENTED BY THIS DRAWING ARE OWNED BY RICHARD BARNES AND THE PROPERTY OF THIS OFFICE AND WERE CREATED, EVALUATED AND DEVELOPED FOR USE ON, AND IN CONNECTION WITH, THE SPECIFIED PROJECT. NONE OF SUCH IDEAS, DESIGNS, AND ARRANGEMENTS OR PLANS SHALL BE USED BY OR DISCLOSED TO ANY PERSON, FIRM OR CORPORATION FOR ANY PURPOSE WHATSOEVER WITHOUT WRITTEN PERMISSION OF RICHARD BARNES.

WRITTEN DIMENSIONS ON THESE DRAWINGS SHALL HAVE PRECEDENCE OVER SCALE DIMENSIONS.

CONTRACTOR SHALL VERIFY AND BE RESPONSIBLE FOR ALL DIMENSIONS AND CONDITIONS ON THE JOB AND THIS OFFICE MUST BE NOTIFIED OF ANY VARIATIONS FROM THE DIMENSIONS AND CONDITIONS AS SHOWN ON THESE DRAWINGS.

RICHARD BARNES
 ARCHITECTURAL
 DESIGN SERVICES LLC
 1807 E. TER. DR.
 LAKE WORTH, FL 33460
 (561) 574-1027

DRAWN
CHECKED
DATE 4-26-16
SCALE AS NOTED
FOR PERMIT
SHEET A7
OF SHEETS