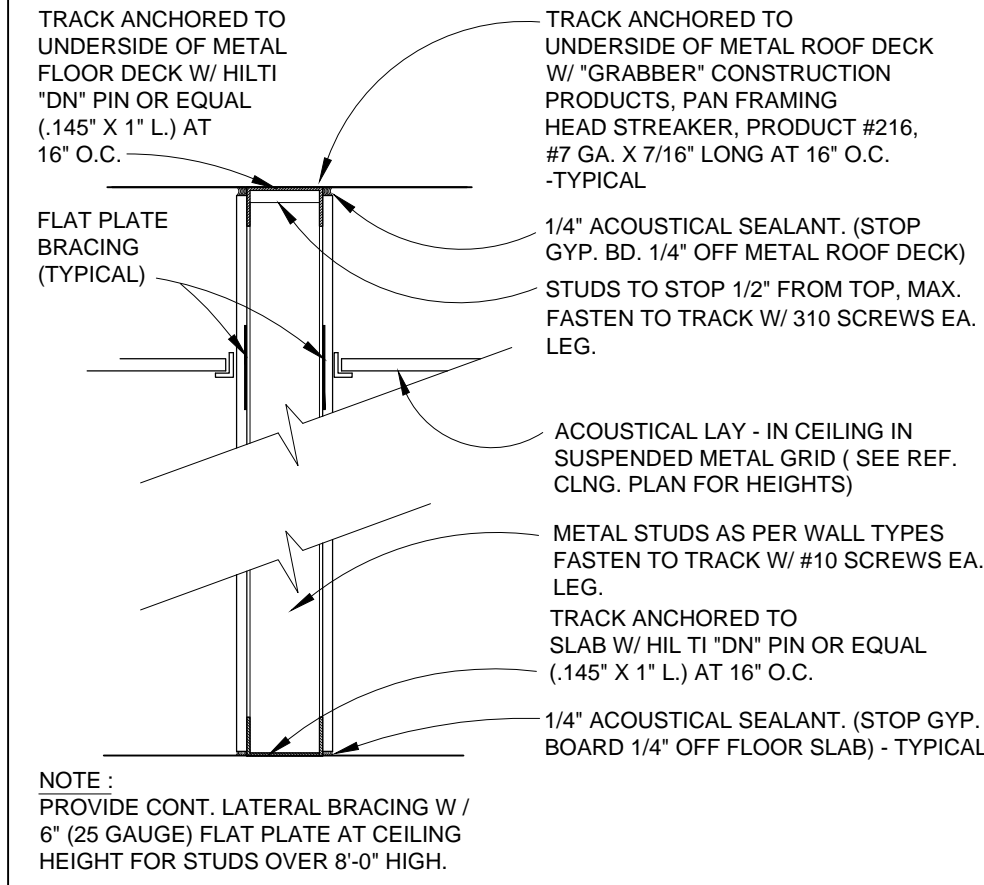


GENERAL WALL TYPE NOTES:

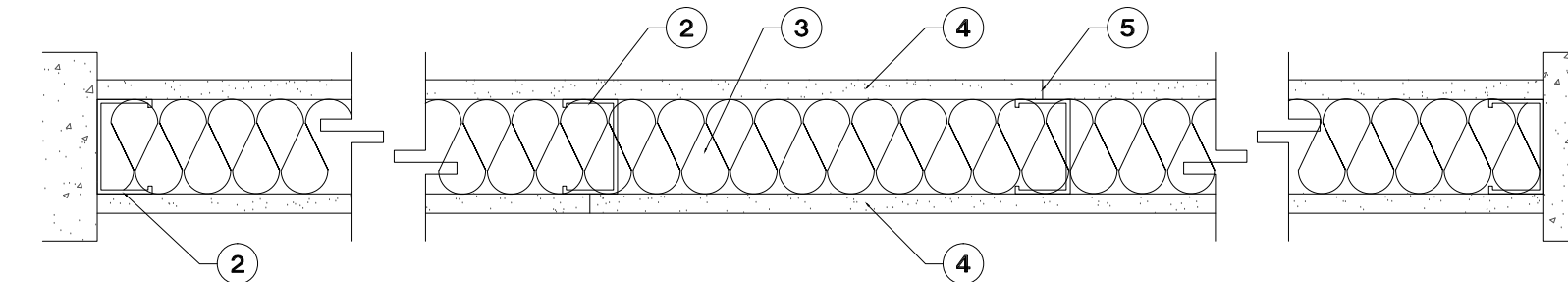
- 1). ALL GYPSUM WALLBOARD SHALL BE 5/8" ABRASION AND IMPACT RESISTANT.
- 2). ALL PARTITIONS TO EXTEND FULL-HEIGHT TO UNDERSIDE OF STRUCTURE AND BE FULLY INSULATED WITH SOUND BLANKETS (UNLESS OTHERWISE NOTED).
- 3). TERMINATE GYPSUM BOARD 1/4" A.F.F. PROVIDING ACOUSTICAL SEALANT, AT FIRE RATED PARTITIONS SEALANT SHALL BE UL RATED THROUGH PENETRATION SEALANT.
- 4). PROVIDE RED PAINTED (STENCILLED) SIGN ABOVE CEILING OF ALL FIRE RATED OR SMOKE WALLS TO READ: "FIRE WALL PROTECT ALL OPENINGS" OR "SMOKE WALL PROTECT ALL OPENINGS".
- 5). PROVIDE 20 GAGE STUDS AT PARTITIONS RECEIVING TILE FINISH. PROVIDE DOUBLE 20 GAGE STUDS AT EACH SIDE OF DOOR OPENINGS AND AT EACH SIDE OF PARTITION OPENINGS EXCEEDING 32 INCHES IN WIDTH.
- 6). ALL WALL HUNG PLUMBING FIXTURES SHALL BE SUPPORTED BY 20 GAUGE METAL STUDS DOUBLED WITH A HORIZONTAL MEMBER SECURELY FASTENED TO NOT LESS THAN TWO STUDS MINIMUM FOR EACH PLUMBING FIXTURE AS PER F.B.C. 2014 (FIFTH EDITION), SEC. 2510.5
- 7). CONTRACTOR SHALL COORDINATE WITH EQUIPMENT LAYOUT AND EQUIPMENT MANUFACTURER / SUPPLIER FOR SUPPORT REQUIREMENTS.
- 8). ALL FINISHES, EXCEPT TILE, SHOULD EXTEND 6" ABOVE ACOUSTICAL TILE CEILINGS.
- 9). ALL EXTERIOR WALLS TO BE FULLY INSULATED WITH AN APPROVED TYPE RIGID BOARD WITH A MINIMUM R-6.5 VALUE.
- 10). MINIMUM EQUIVALENT THICKNESS OF CMU WALLS FOR 1-HR FIRE RATING AS PER FBC IS 3 INCHES, THEREFORE ALL CMU WALLS IN THIS PROJECT QUALIFY AS RATED.
- 11). APPLY SAFING INSULATION AND FILL MATERIAL TO WALL-ROOF DECK JOINTS (1" GAP). INSTALL PER UL SYSTEM DESIGNS.
- 12). PENETRATIONS THROUGH RATED WALLS SHALL BE FIRE STOPPED WITH UL CLASSIFIED FILL, VOID, CAVITY MATERIAL.
- 13). ALL LOAD BEARING WALLS TO BE REINFORCED IN ACCORDANCE WITH STRUCTURAL DRAWINGS.
- 14). NOMINAL DIMENSIONS FOR PARTITIONS HAVE BEEN SHOWN ON THE WALL TYPES.
- 15). SUBMIT PRODUCT DATA FOR APPROVAL.
- 16). REFER TO WALL TYPES INDICATED ON FLOOR PLANS AND WALL TYPE ILLUSTRATIONS ON A-701.

5 GENERAL WALL TYPES NOTES



6 TYP. PARTITION FASTENING DETAIL
SCALE: 1" = 1'-0"

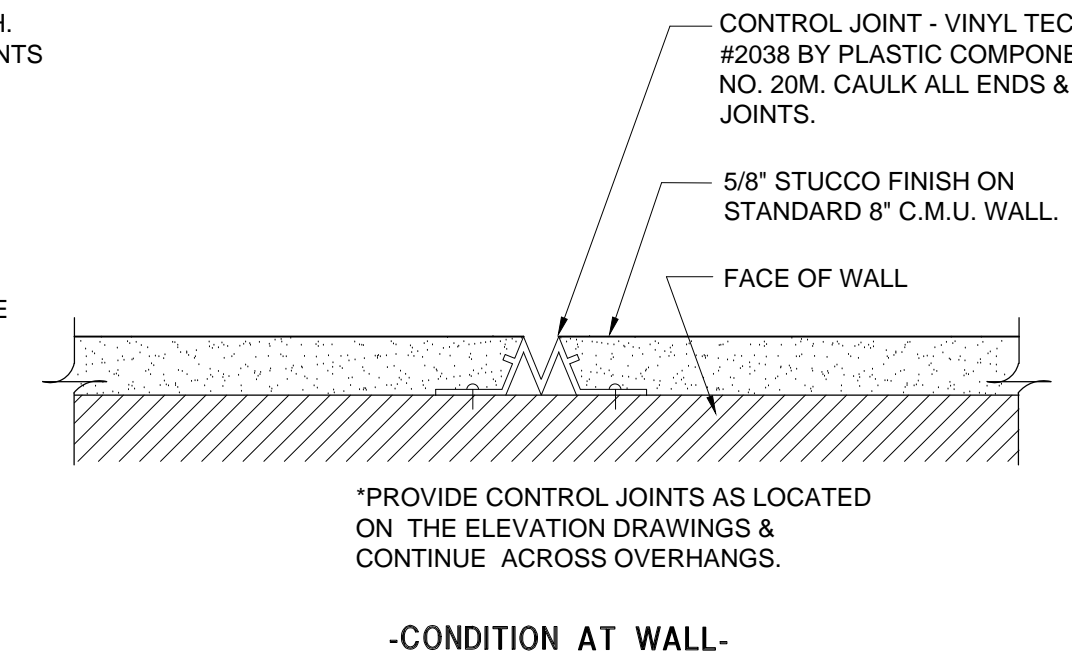
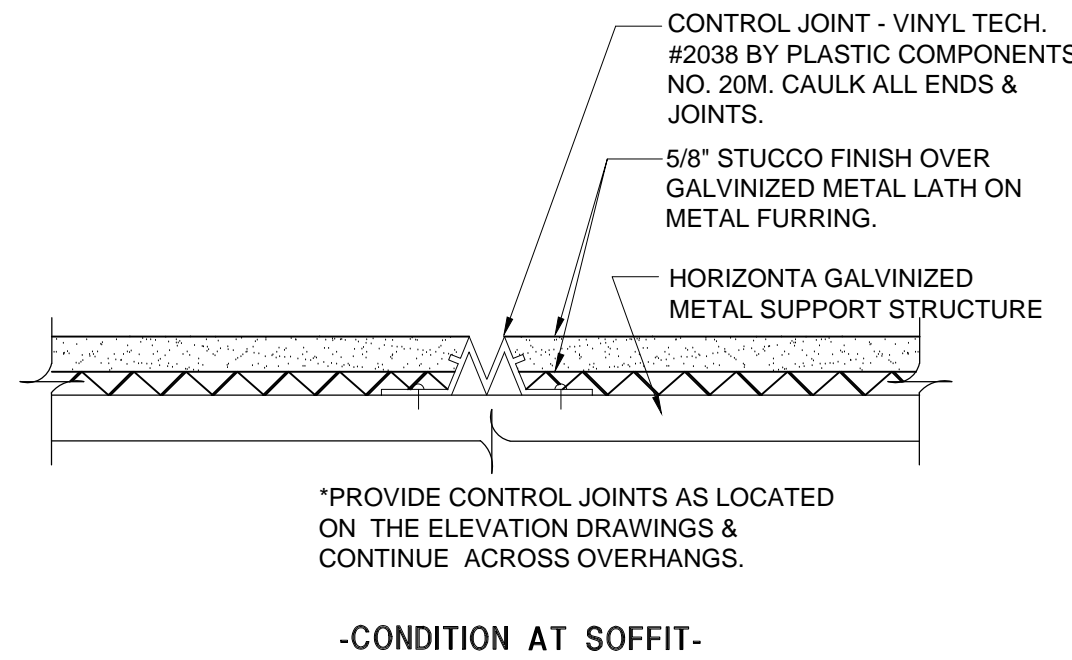
FIRE RESISTANCE RATINGS - ANSI/UL 263
DESIGN NO. U465
MAY 23, 2007
NONBEARING WALL RATING -- 1 HR.



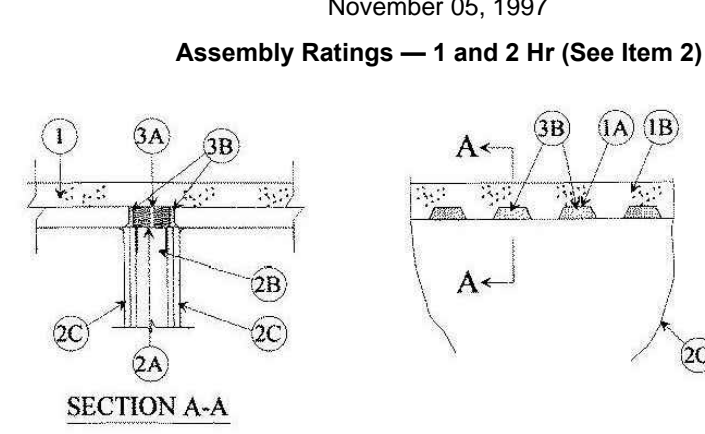
1. FLOOR AND CEILING RUNNERS -- (NOT SHOWN) -- CHANNEL SHAPED RUNNERS, 3-5/8 IN. WIDE (MIN), 1-1/4 IN. LEGS, FORMED FROM MIN NO. 25 MSG GALV STEEL, ATTACHED TO FLOOR AND CEILING WITH FASTENERS SPACED 24 IN. OC MAX.
2. STEEL STUDS -- CHANNEL SHAPED, 3-5/8 IN. WIDE (MIN), 1-1/4 IN. LEGS, 3/8 IN. FOLDED BACK RETURNS, FORMED FROM MIN NO. 25 MSG GALV STEEL SPACED 24 IN. OC MAX.
3. BATTS AND BLANKETS -- (OPTIONAL) -- MINERAL WOOL OR GLASS FIBER BATTS PARTIALLY OR COMPLETELY FILLING STUD CAVITY. SEE BATTS AND BLANKETS (B&Z) CATEGORY FOR NAMES OF CLASSIFIED COMPANIES.
- 3A. FIBER, SPRAYED -- AS AN ALTERNATE TO BATTS AND BLANKETS (ITEM 3) -- SPRAY APPLIED CELLULOSE MATERIAL. THE FIBER IS APPLIED WITH WATER TO COMPLETELY FILL THE ENCLOSED CAVITY IN ACCORDANCE WITH THE APPLICATION INSTRUCTIONS SUPPLIED WITH THE PRODUCT. NOMINAL DRY DENSITY OF 3.0 LB/FT³. ALTERNATE APPLICATION METHOD: THE FIBER IS APPLIED WITH U.S. GREENFIBER LLC TYPE AD100 HOT MELT ADHESIVE AT A NOMINAL RATIO OF ONE PART ADHESIVE TO 6.6 PARTS FIBER TO COMPLETELY FILL THE ENCLOSED CAVITY IN ACCORDANCE WITH THE APPLICATION INSTRUCTIONS SUPPLIED WITH THE PRODUCT. NOMINAL DRY DENSITY OF 2.5 LB/FT³.
- U.S. GREENFIBER LLC -- COCON2 STABILIZED OR COCON2-FRM (FIRE RATED MATERIAL)
- 3B. FIBER, SPRAYED -- AS AN ALTERNATE TO BATTS AND BLANKETS (ITEM 3) AND ITEM 3A -- SPRAY APPLIED CELLULOSE INSULATION MATERIAL. THE FIBER IS APPLIED WITH WATER TO INTERIOR SURFACES IN ACCORDANCE WITH THE APPLICATION INSTRUCTIONS SUPPLIED WITH THE PRODUCT. APPLIED TO COMPLETELY FILL THE ENCLOSED CAVITY. MINIMUM DRY DENSITY OF 4.3 POUNDS PER CUBIC FT. NU-WOOL CO INC -- CELLULOSE INSULATION
4. GYPSUM BOARD -- 5/8 IN. THICK, 4 FT WIDE, ATTACHED TO STEEL STUDS AND FLOOR AND CEILING TRACK WITH 1 IN. LONG, TYPE S STEEL SCREWS SPACED 8 IN. OC, ALONG EDGES OF BOARD AND 12 IN. OC IN THE FIELD OF THE BOARD, JOINTS ORIENTED VERTICALLY AND STAGGERED ON OPPOSITE SIDES OF THE ASSEMBLY. WHEN ATTACHED TO ITEM 6 (RESILIENT CHANNELS) OR 6A (FURRING CHANNELS), WALLBOARD IS SCREW ATTACHED TO FURRING CHANNELS WITH 1 IN. LONG, TYPE S STEEL SCREWS SPACED 12 IN. OC. AMERICAN GYPSUM CO -- TYPES AG-C, AGX-1 BEIJING NEW BUILDING MATERIALS PUBLIC LTD CO -- TYPE DBX-1.

5. JOINT TAPE AND COMPOUND -- VINYL DRY OR PREMIXED JOINT COMPOUND, APPLIED IN TWO COATS TO JOINTS AND SCREW HEADS; PAPER TAPE, 2 IN. WIDE, EMBEDDED IN FIRST LAYER OF COMPOUND OVER ALL JOINTS. AS AN ALTERNATE, NOMINAL 3/32 IN. THICK GYPSUM VENEER PLASTER MAY BE APPLIED TO THE ENTIRE SURFACE OF CLASSIFIED VENEER BASEBOARD. JOINTS REINFORCED. PAPER TAPE AND JOINT COMPOUND MAY BE OMITTED WHEN GYPSUM BOARDS ARE SUPPLIED WITH SQUARE EDGES.
6. RESILIENT CHANNEL -- (OPTIONAL-NOT SHOWN) -- 25 MSG GALV STEEL RESILIENT CHANNELS SPACED VERTICALLY MAX 24 IN. OC, FLANGE PORTION ATTACHED TO EACH INTERSECTING STUD WITH 1/2 IN. LONG TYPE S-12 PANHEAD STEEL SCREWS.
- 6A. STEEL FRAMING MEMBERS (NOT SHOWN) -- AS AN ALTERNATE TO ITEM 3, FURRING CHANNELS AND RESILIENT SOUND ISOLATION CLIP AS DESCRIBED BELOW:
 - A. FURRING CHANNELS -- FORMED OF NO. 25 MSG GALV STEEL. 2-3/8 IN. WIDE BY 7/8 IN. DEEP, SPACED 24 IN. OC PERPENDICULAR TO STUDS. CHANNELS SECURED TO STUDS AS DESCRIBED IN ITEM 3. ENDS OF ADJOINING CHANNELS ARE OVERLAPPED 6 IN. AND TIED TOGETHER WITH DOUBLE STRAND OF NO. 18 SWIG GARD STEEL WIRE NEAR EACH END OF OVERLAP. AS AN ALTERNATE, ENDS OF ADJOINING CHANNELS MAY BE OVERLAPPED 6 IN. AND SECURED TOGETHER WITH TWO SELF-TAPPING #6 FRAMING SCREWS, MIN. 7/16 IN. LONG AT THE MIDDLE OF THE OVERLAP, WITH ONE SCREW ON EACH FLANGE OF THE CHANNEL.
 - B. STEEL FRAMING MEMBERS -- USED TO ATTACH FURRING CHANNELS (ITEM A) TO STUDS (ITEM 1). CLIPS SPACED 48 IN. OC, AND SECURED TO STUDS WITH 1-5/8 IN. WAFER OR HEX HEAD TYPE S STEEL SCREW THROUGH THE CENTER GROMMET. FURRING CHANNELS ARE FRICTION FITTED INTO CLIPS.
 - PAC INTERNATIONAL INC -- TYPE R5C-1.
7. WALL AND PARTITION FACINGS AND ACCESSORIES -- (OPTIONAL, NOT SHOWN) -- NOMINAL 1/2 IN. THICK, 4 FT WIDE PANELS, FOR OPTIONAL USE AS AN ADDITIONAL LAYER ON ONE OR BOTH SIDES OF THE ASSEMBLY. PANELS ATTACHED IN ACCORDANCE WITH MANUFACTURER'S RECOMMENDATIONS. WHEN THE QR-510 PANEL IS INSTALLED BETWEEN THE STEEL FRAMING AND THE UL CLASSIFIED GYPSUM BOARD, THE REQUIRED UL CLASSIFIED GYPSUM BOARD LAYER(S) IS/ARE TO BE INSTALLED AS INDICATED AS TO FASTENER TYPE AND SPACING, EXCEPT THAT THE REQUIRED FASTENER LENGTH SHALL BE INCREASED BY A MINIMUM OF 1/2 IN. NOT EVALUATED OR INTENDED AS A SUBSTITUTE FOR THE REQUIRED LAYER(S) OF UL CLASSIFIED GYPSUM BOARD.
- QUIET SOLUTION INC -- TYPE QUIETROCK QR-510.
- *BEARING THE UL CLASSIFICATION MARK

4 STUCCO CONTROL JOINT DETAIL
N.T.S.



Joint Systems
System No. HW-S-0023



1. **Floor Assembly** -- The fire rated fluted steel deck/concrete floor assembly shall be constructed of the materials and in the manner described in the individual Floor-Ceiling Design in the UL Fire Resistance Directory and shall include the following construction features:

- A. **Steel Floor and Form Units** -- Composite or noncomposite max 3 in. deep min 22 galv or phos/painted fluted units. Adjacent units button-punched or welded together max 36 in. OC along side joints.
- B. **Normal Weight or Light Weight Concrete** -- Min 2-1/2 in. thick concrete of the type, density and compressive strength detailed for the specific Floor-Ceiling Design described in the UL Fire Resistance Directory.

2. **Wall Assembly** -- The 1 or 2 Hr fire-rated gypsum wallboard/stud wall assembly shall be constructed of the materials and in the manner specified in the individual U400 Series Wall and Partition Designs in the UL Fire Resistance Directory and shall include the following construction features:

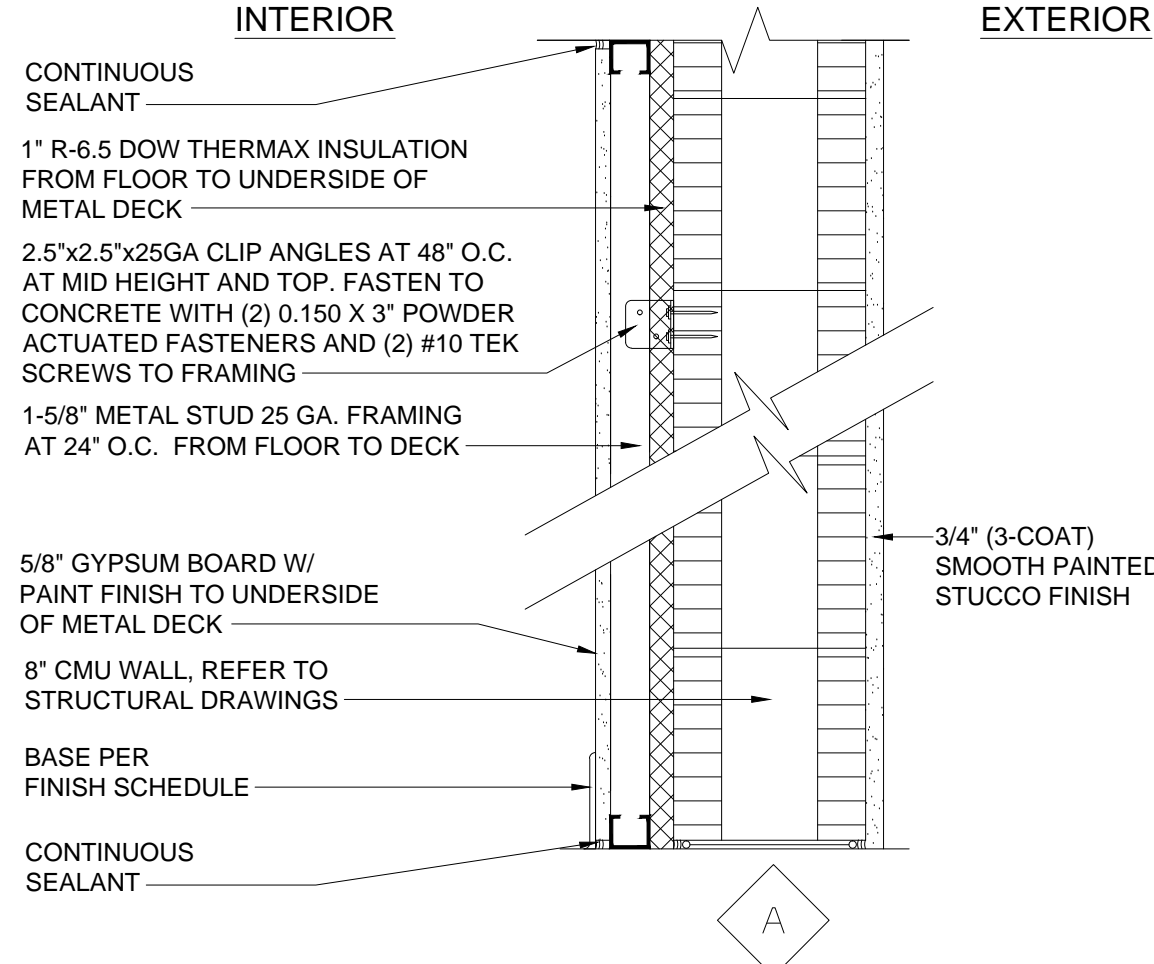
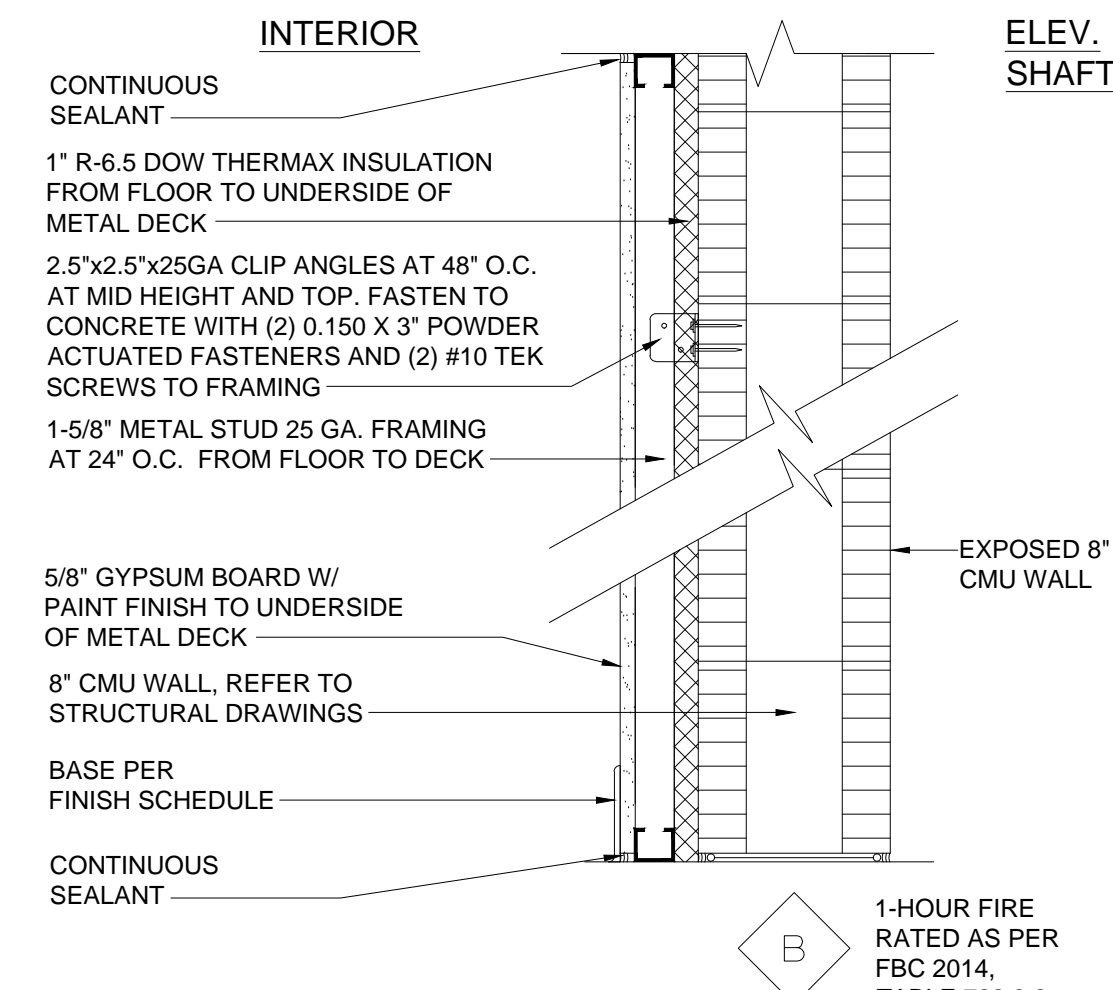
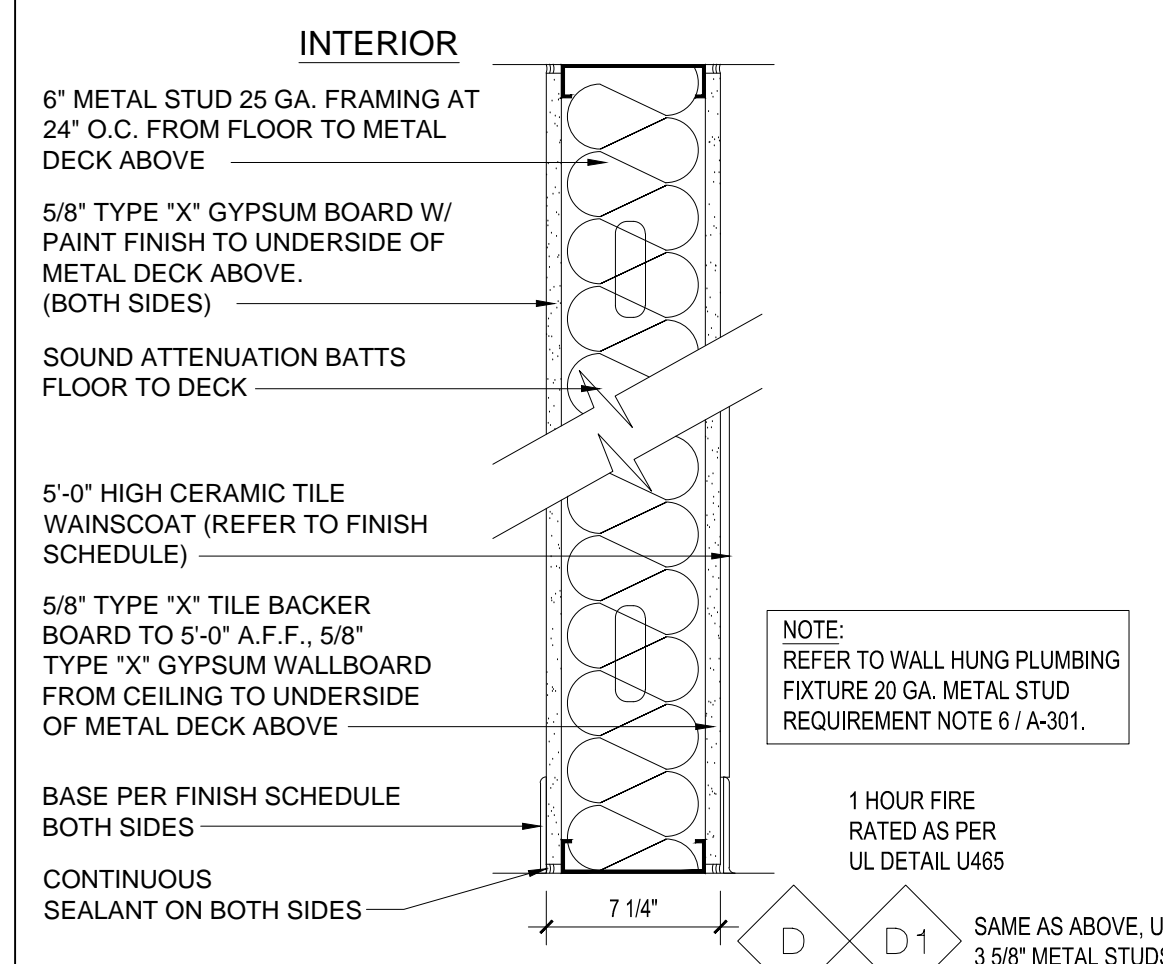
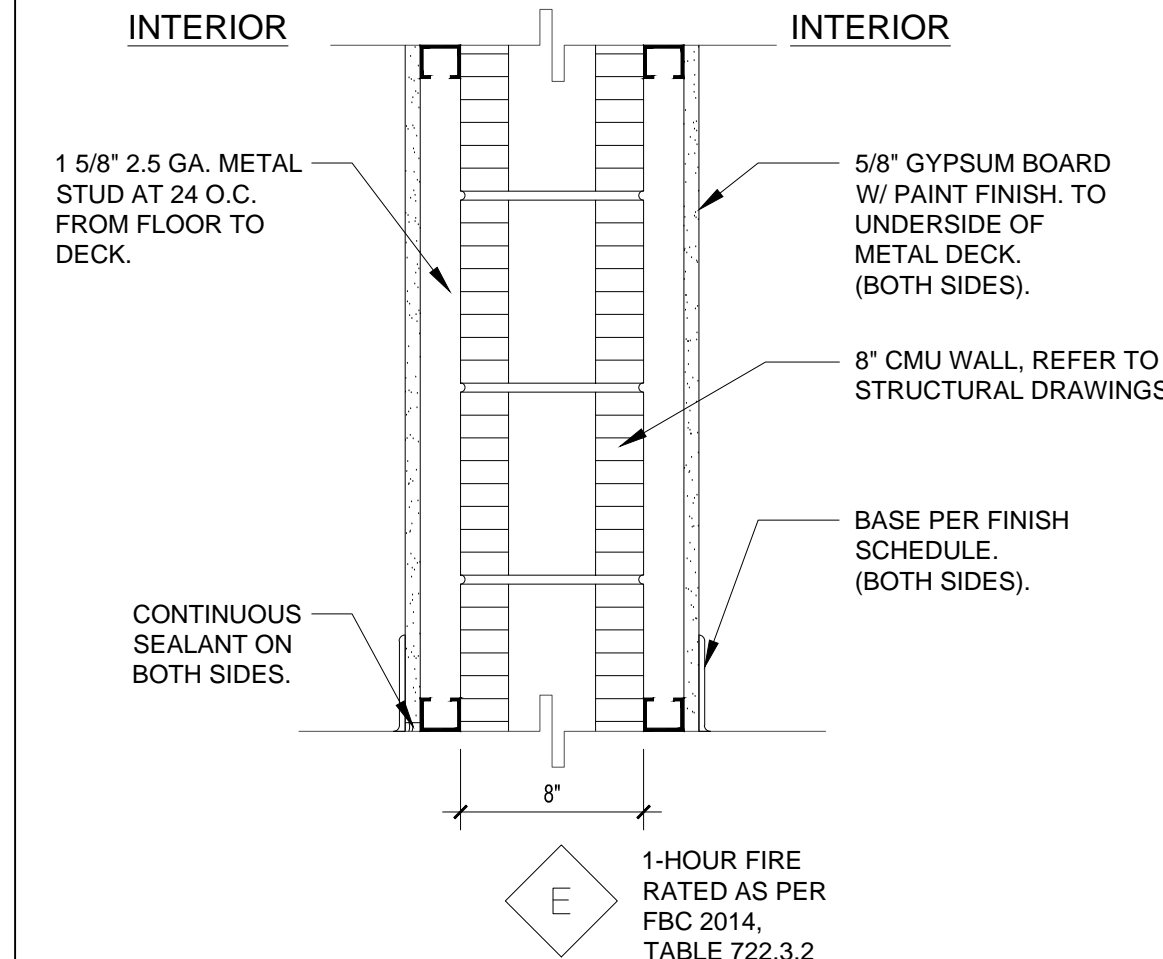
- A. **Steel Floor and Ceiling Runners** -- Floor and ceiling runners of wall assembly shall consist of min 25 ga galv steel channels sized to accommodate steel studs (Item 2B). Ceiling runner to be provided with min 1-1/4 in. flanges. Ceiling runner secured to valleys of steel floor units (Item 1A) with steel fasteners or by welds spaced max 24 in. OC.
- B. **Studs** -- Min 3-1/2 in. wide by 1-1/4 in. deep corrosion protected min 25 MSG steel channels. Steel stud spacing not to exceed 24 in. OC.
- C. **Gypsum Board** -- 5/8 in. thick, 4 ft wide with square or tapered edges. Wallboard sheets installed vertically on both sides of stud framing with joints centered over studs. Wallboard to be butted tight to bottom of the steel deck. The gypsum wallboard type, thickness, number of layers and fastener types shall be as specified in the individual U400 Series Design in the UL Fire Resistance Directory.

3. **Joint System** -- The joint system consists of a forming material and a fill material in the flutes of the steel floor units, as follows:

- A. **Packing Material** -- Min 3-3/4 in. thickness of min 4.0 pcf mineral wool batt insulation, tightly packed into flutes of the steel floor units between the top of the ceiling runner and bottom of the steel floor units and recessed from each surface of wall to accommodate the required thickness of fill material.
- B. **Fill, Void or Cavity Material** -- Min 3/8 in. thickness of fill material installed on each side of the wall in the flutes of the steel floor units. An additional min 3/8 in. bead of fill material to be installed at the wallboard/steel deck interface.

RECTORSEAL -- Metacaulk 835+

*Bearing the UL Classification Mark



3 UL JOINT SYSTEM
N.T.S.

2 WALL TYPES
1 1/2"=1'-0"

1 UL 465 NONBEARING WALL DETAIL AND NOTES
N.T.S.



1800 Eller Drive, Suite 500
Fort Lauderdale, FL 33316
T 954.961.6806
F 954.961.6807
www.synalovskid.com

Manuel Synalovski, AIA
AR 0011628
SEAL

LICENSE NO. AA26001863

VILLAGE AT ATLANTIC SHORES
801 N. FEDERAL HIGHWAY
HALLANDALE BEACH, FL
CLIENT: ATLANTIC VILLAGE 1, LLC.

REV	DATE	DESCRIPTION

DESIGN DELIVERABLE: PERMIT SET
ISSUE DATE: 05-11-16

PROJECT NUMBER: 1177 - 150203
DRAWN BY: FC
CHECKED BY: JS

Copyright (c) by SYNALOVSKI ROMANIK SAYE, LLC
All Rights Reserved.

**WALL TYPES
DETAILS & NOTES**

SHEET NUMBER:
A-701