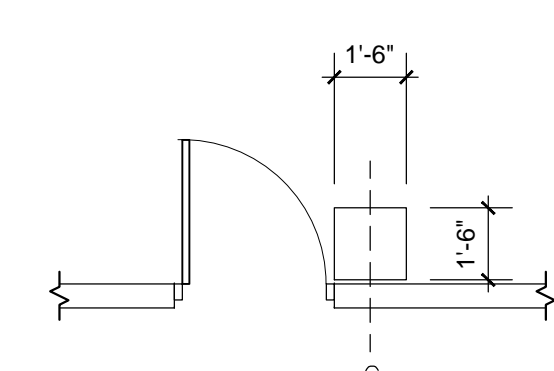


REVISIONS

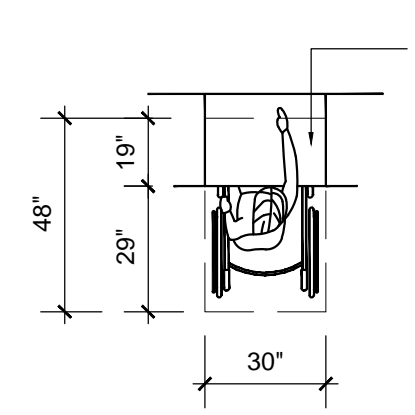
1.	
2.	
3.	
4.	
5.	
6.	
7.	
8.	
9.	
10.	

ALL MEASUREMENTS, ARRANGEMENTS, AND PLANS INDICATED OR REPRESENTED BY THIS DRAWING ARE OWNED BY AND PROPERTY OF THE DESIGNER, AND WHEN CREATED, INVENTED, AND DEVELOPED FOR USE, AND IN CONNECTION WITH THE SPECIFIED PROJECT, NONE OF WHICH SHALL BE REPRODUCED, ARRANGEMENTS, AND PLANS SHALL BE USED BY OR DISCLOSED TO ANY PERSON, FIRM, OR CORPORATION FOR ANY PURPOSE WITHOUT WRITTEN PERMISSION OF RWB LINARES ARCHITECTURE, INC.

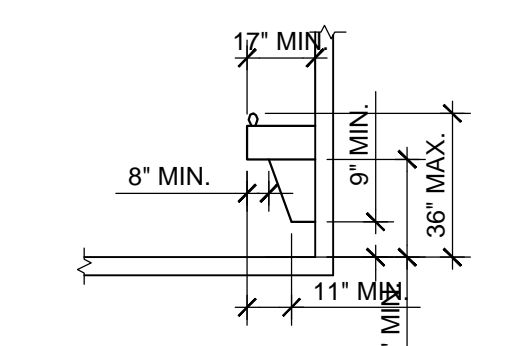
LIFE FELLOWSHIP
11401 WEST SAMPLE ROAD
CORAL SPRINGS, FL. 33065



LOCATION OF TACTILE SIGNAGE AT DOOR
18" X 18" MIN.

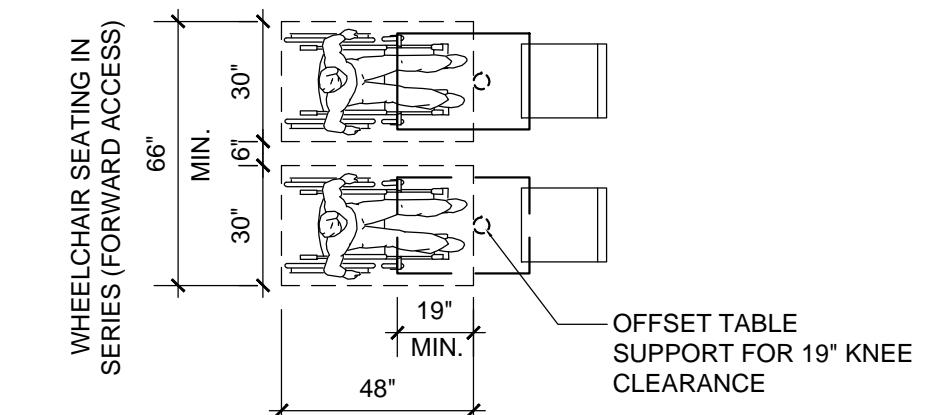


CLEAR FLOOR SPACE UNDER COUNTER



NOTE: EQUIPMENT PERMITTED WITHIN DASHED LINES IF MOUNTED BELOW APRON.

DRINKING FOUNTAIN SPOUT HEIGHT AND LEG CLEARANCE



CLEARANCE FOR TABLE SEATING AND WHEELCHAIR SEATING IN SERIES

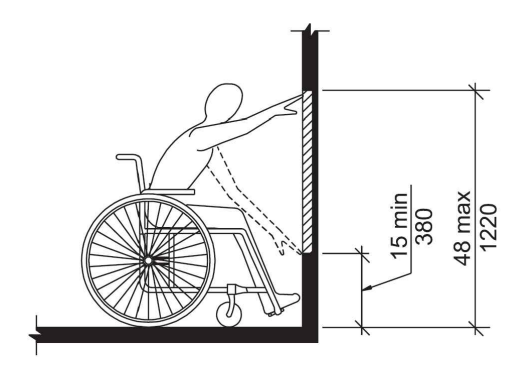
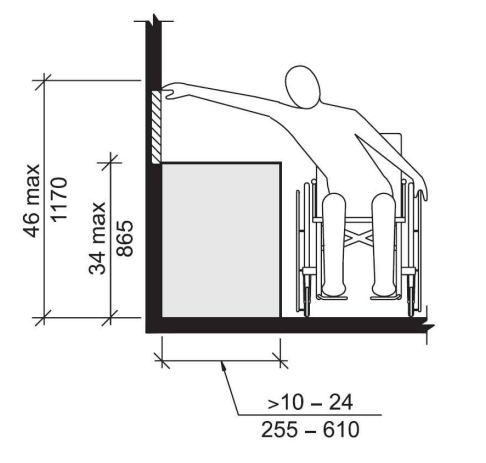
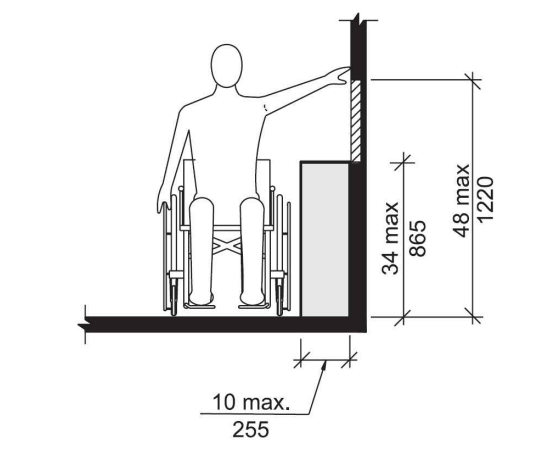
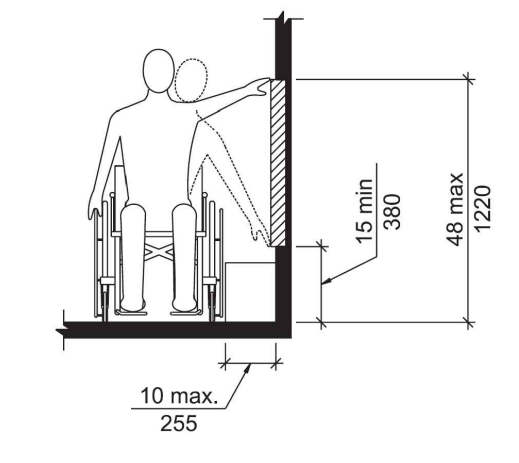
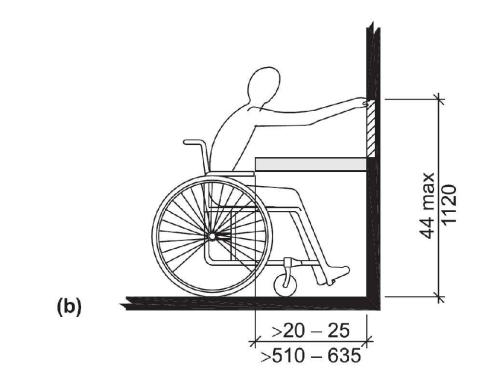
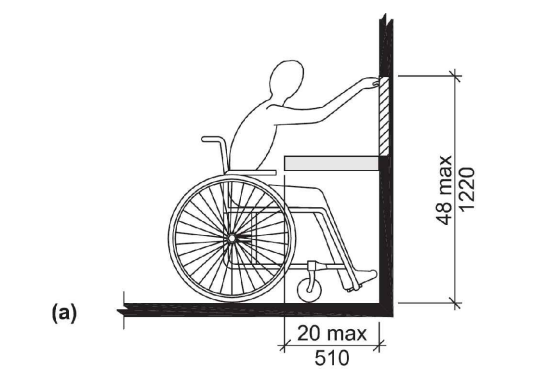
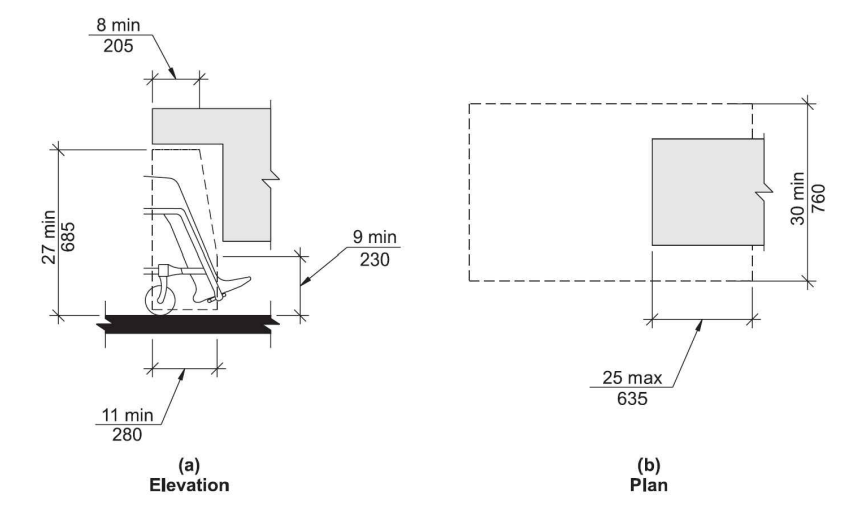


Fig. 308.2.1 Unobstructed Forward Reach



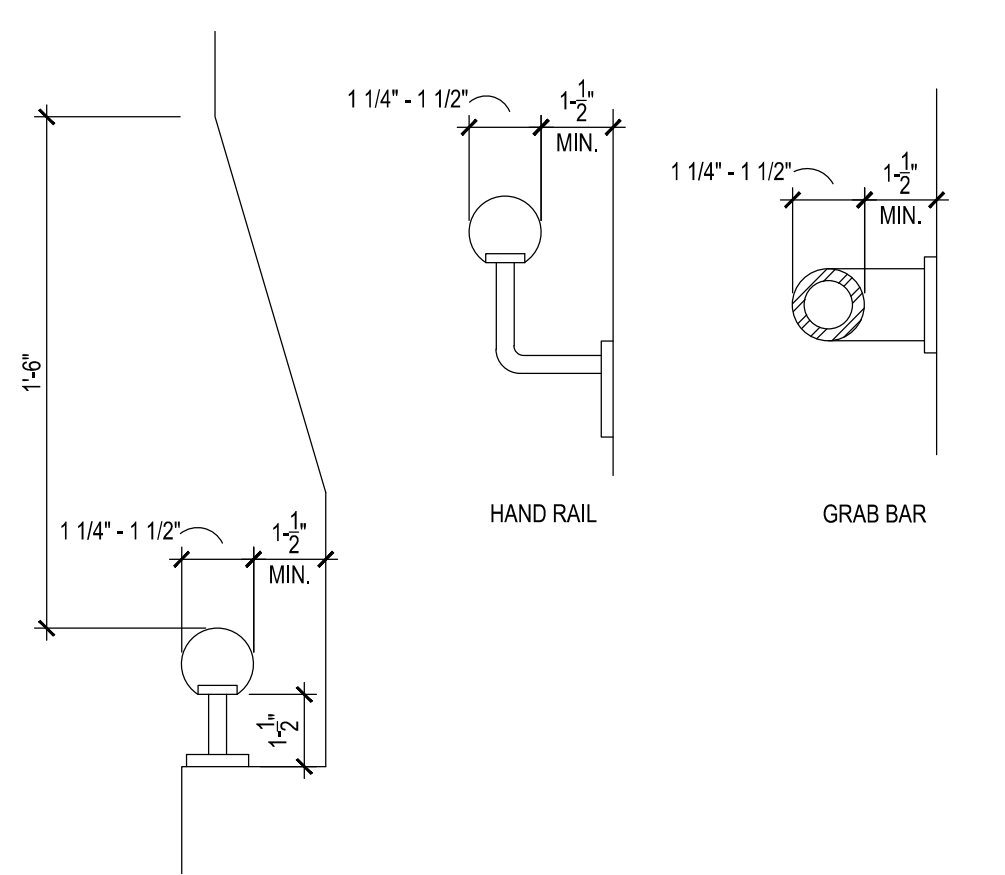
REACH LIMITS

N.T.S.



KNEE CLEARANCE

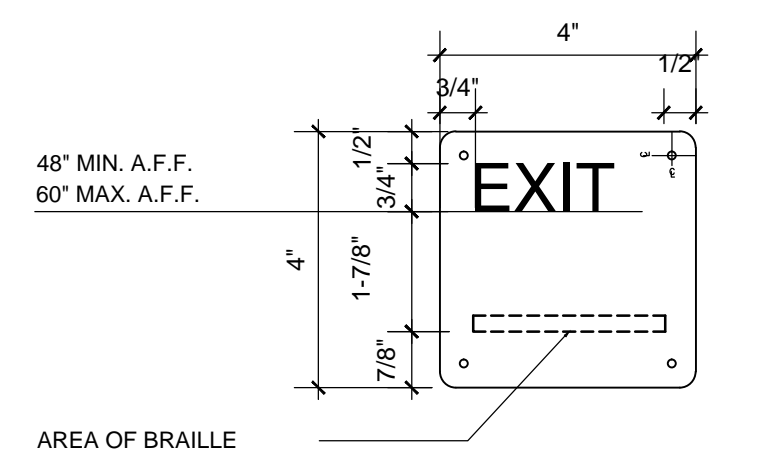
N.T.S.



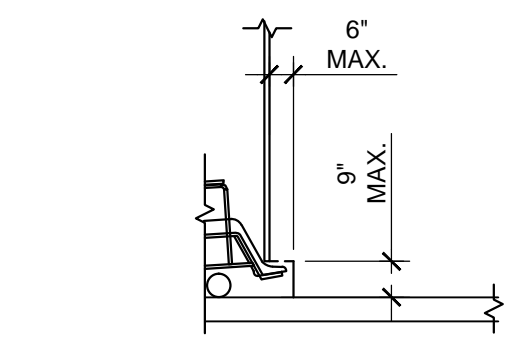
RECESSED HANDRAIL

HANDRAILS & GRAB BARS

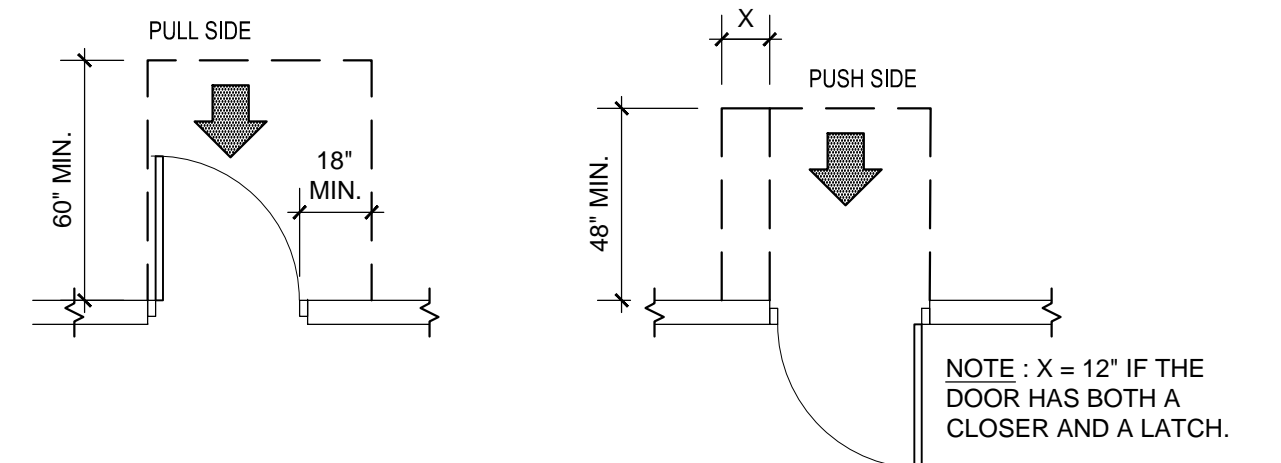
1/4" = 1'-0"



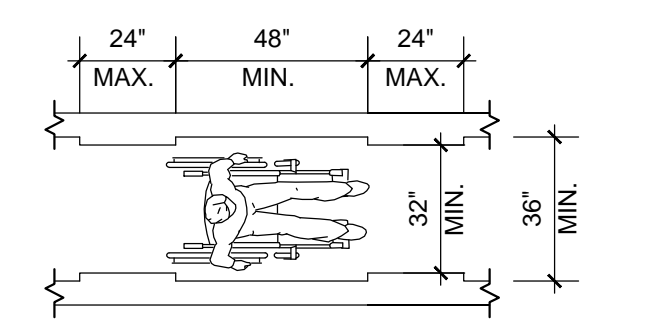
AREA OF BRAILLE



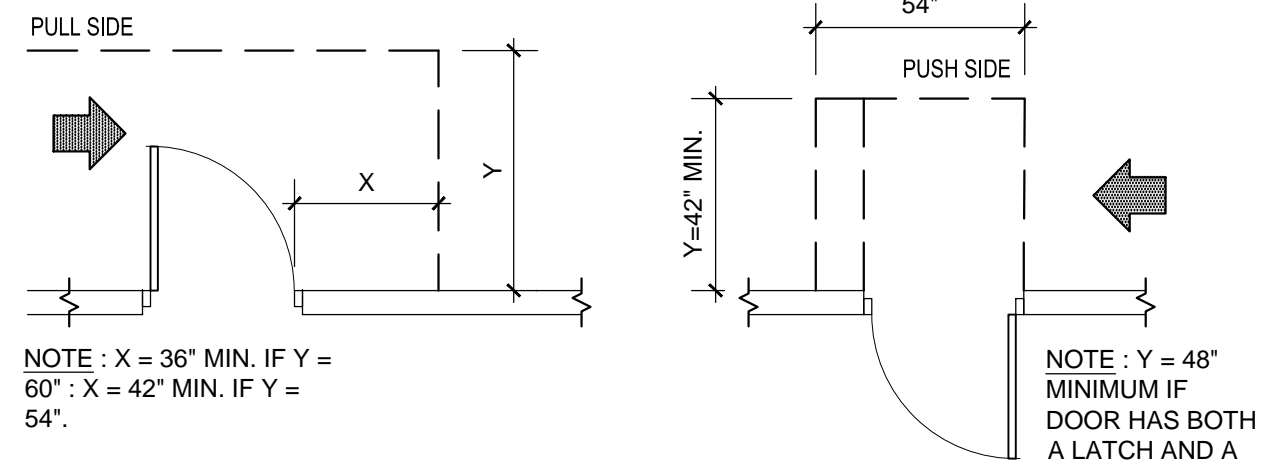
TOILET COMPARTMENT TOE CLEARANCE ELEVATION



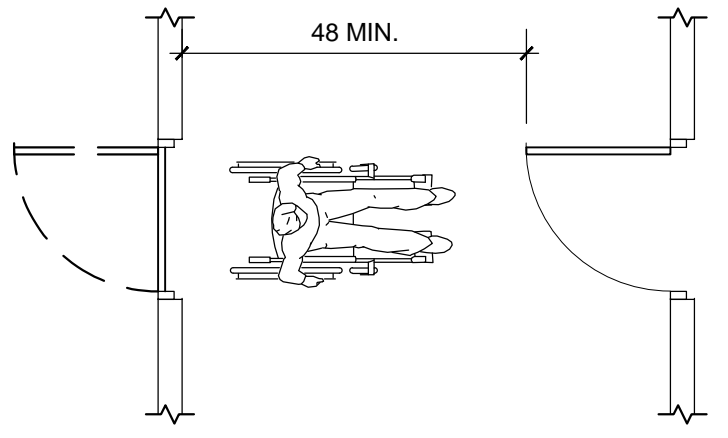
FRONT APPROACHES - SWINGING DOOR



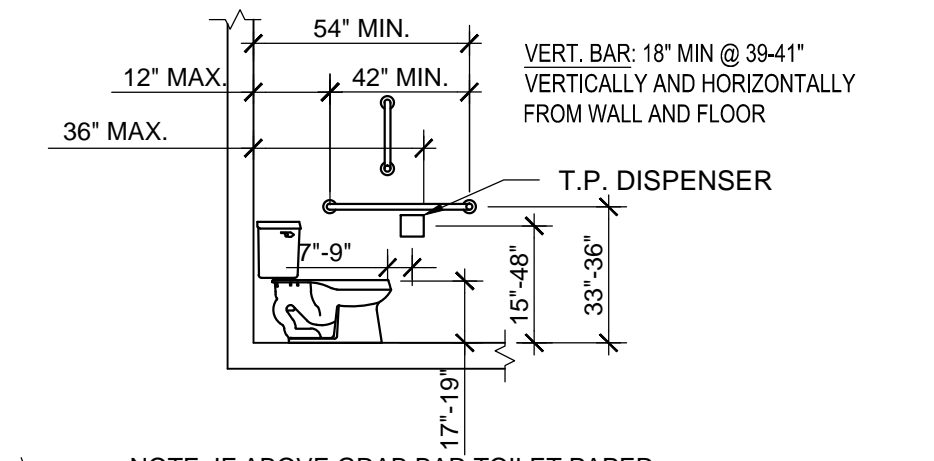
CLEAR WIDTH OF ACCESSIBLE ROUTE



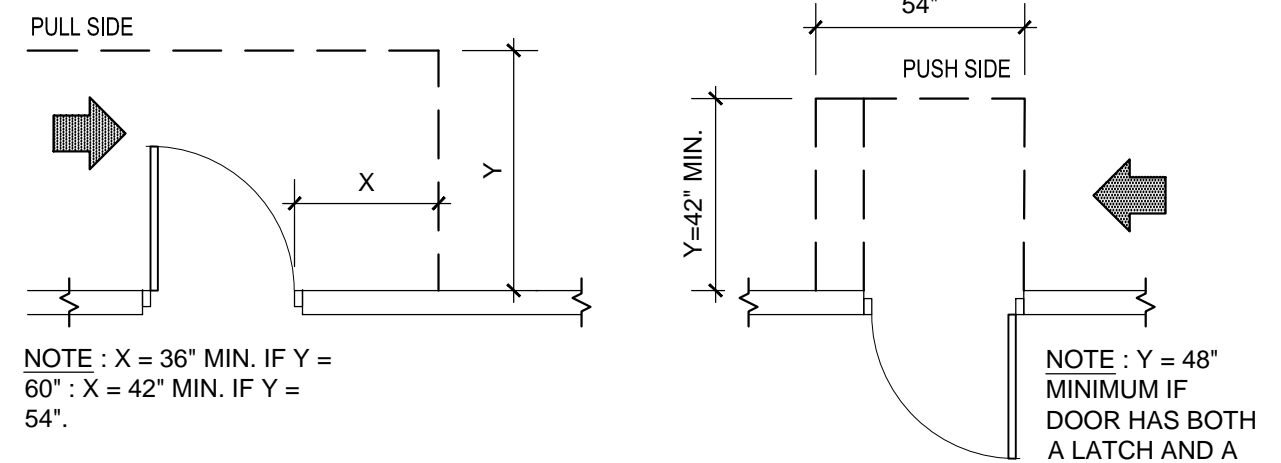
HINGE-SIDE APPROACHES - SWINGING DOOR



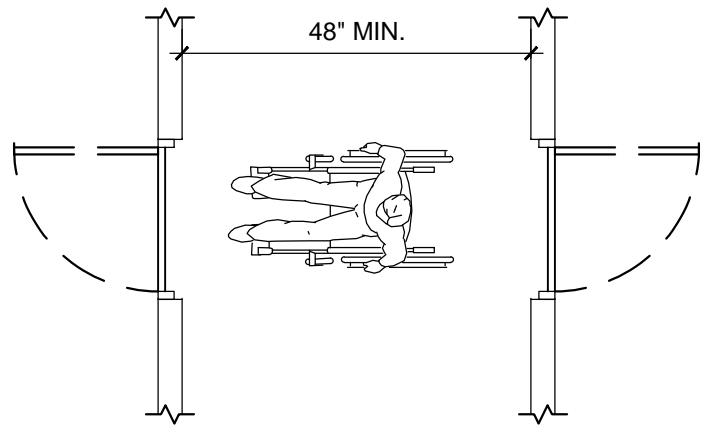
TWO HINGED DOORS IN SERIES



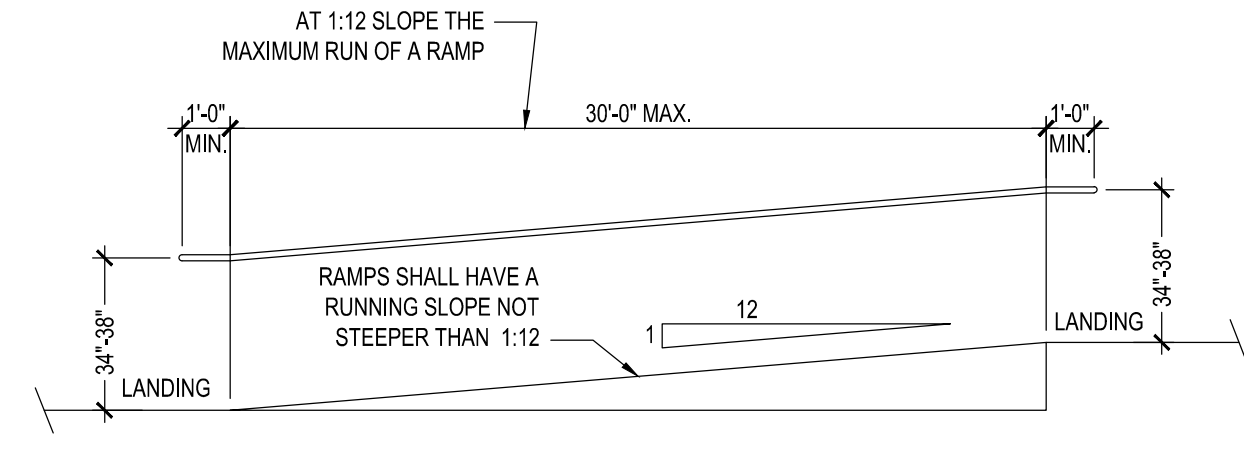
WATER CLOSET SIDE VIEW



LATCH SIDE APPROACHES - SWINGING DOOR



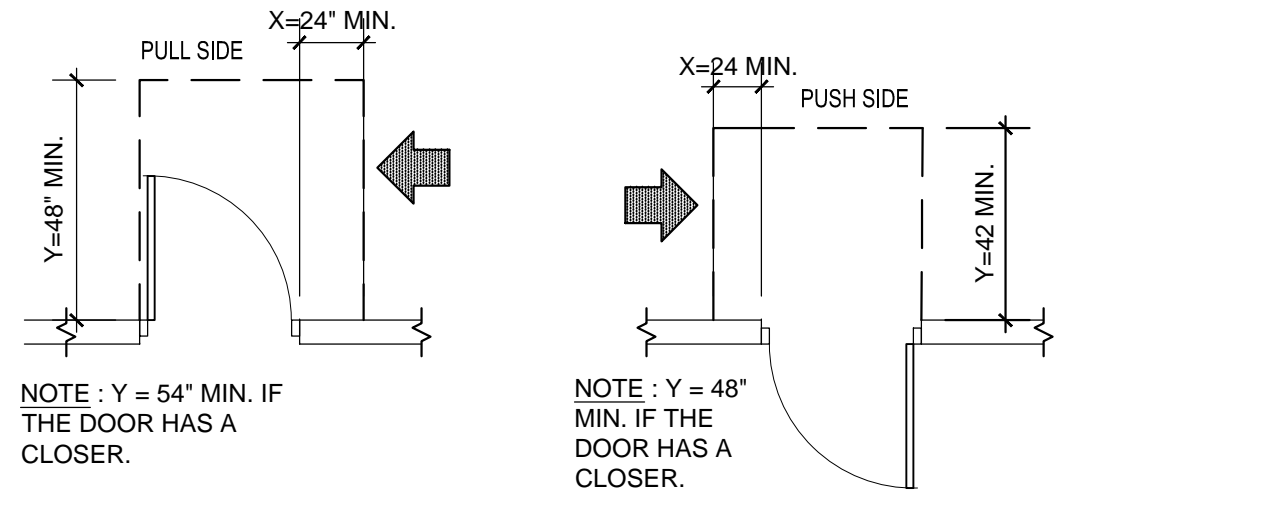
TWO HINGED DOORS IN SERIES



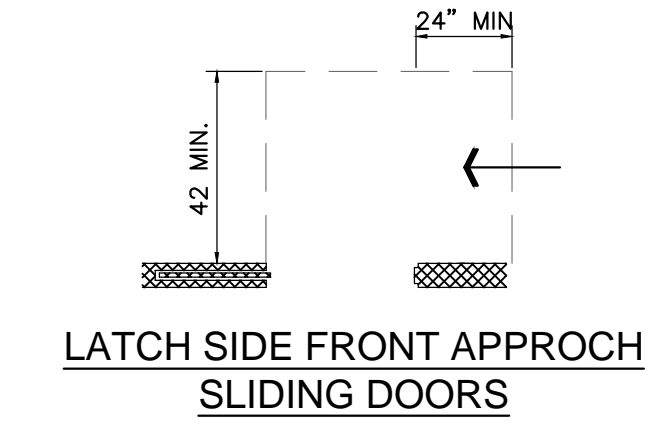
RAMP RUN AND SLOPE

NOTE: IF ABOVE GRAB BAR TOILET PAPER DISPENSER TO BE 12" MIN. ABOVE GRAB BAR AND IF BELOW GRAB BAR SHALL BE 1" MIN. BELOW GRAB BAR

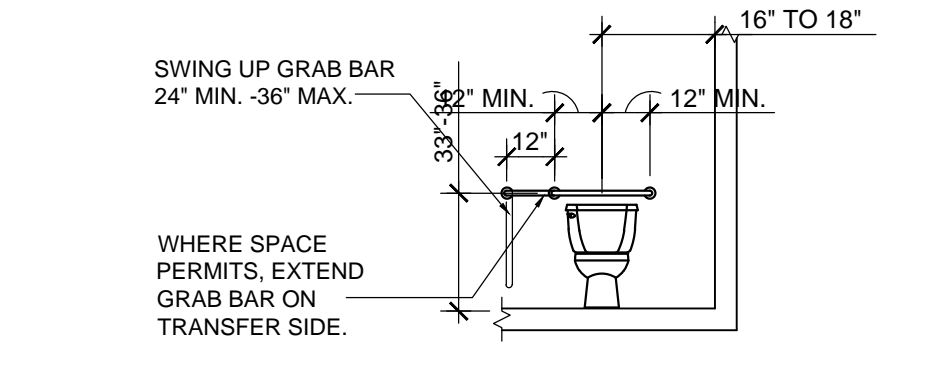
WATER CLOSET SIDE VIEW



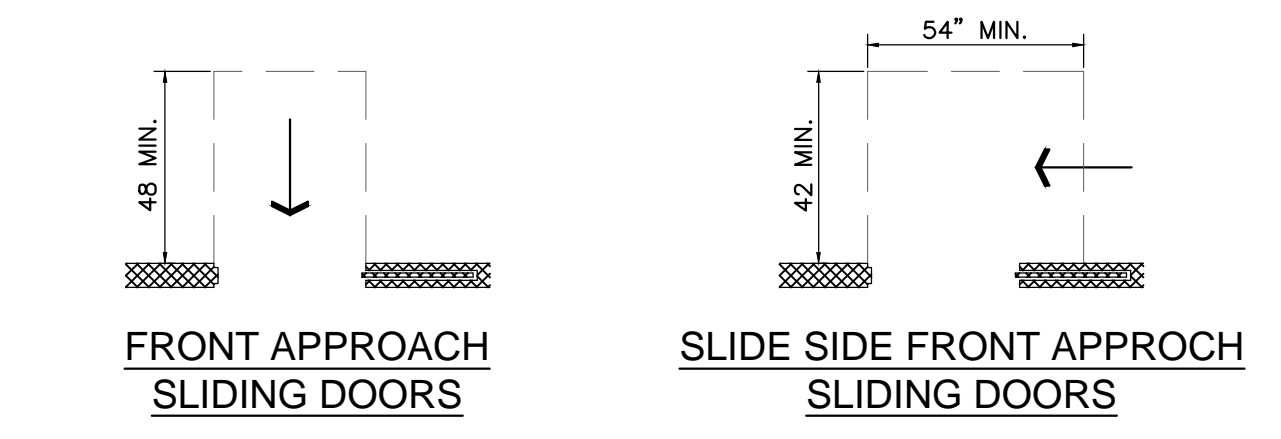
LATCH SIDE APPROACHES - SWINGING DOOR



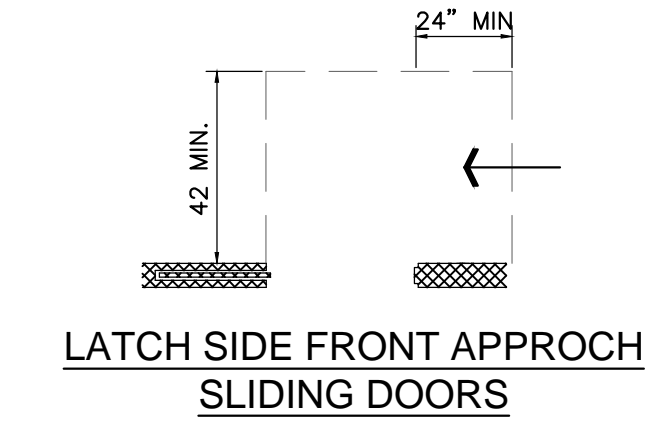
LATCH SIDE FRONT APPROACH SLIDING DOORS



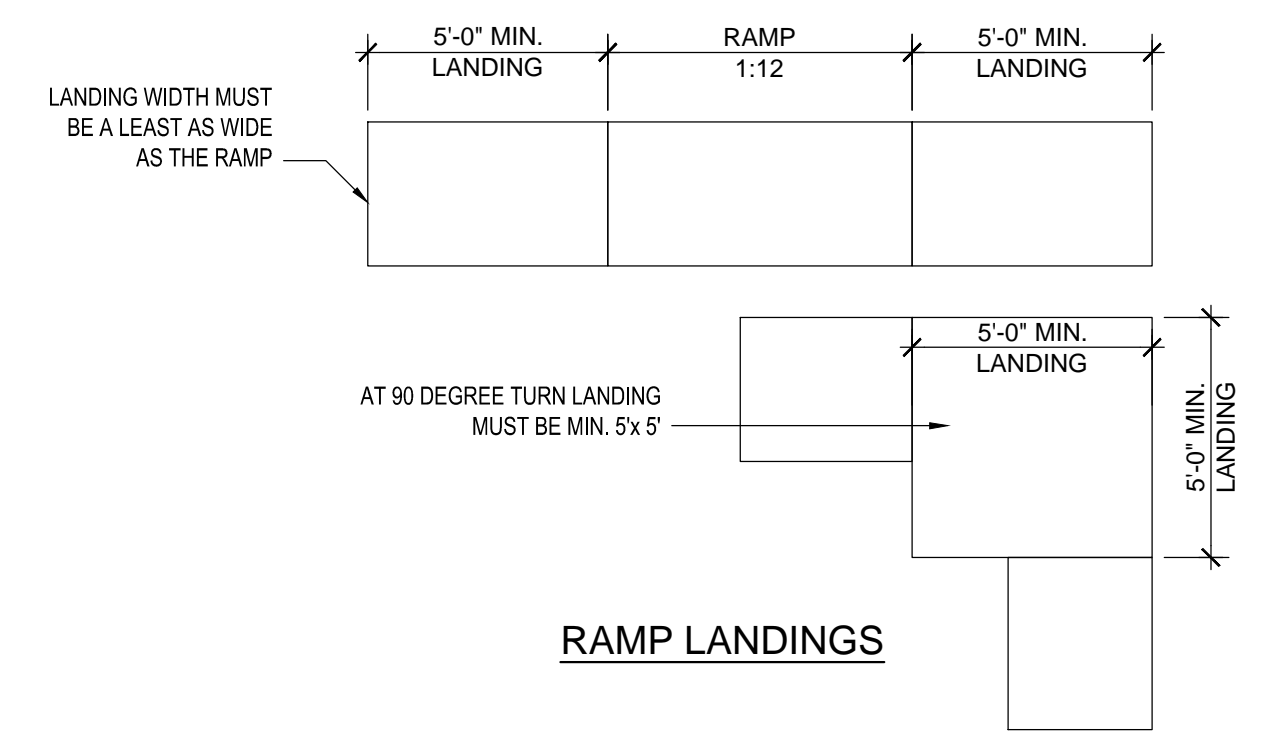
WATER CLOSET FRONT VIEW



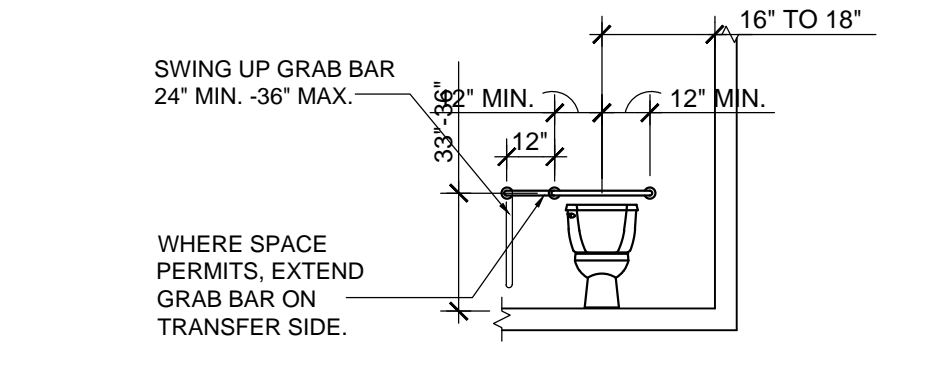
FRONT APPROACH SLIDING DOORS



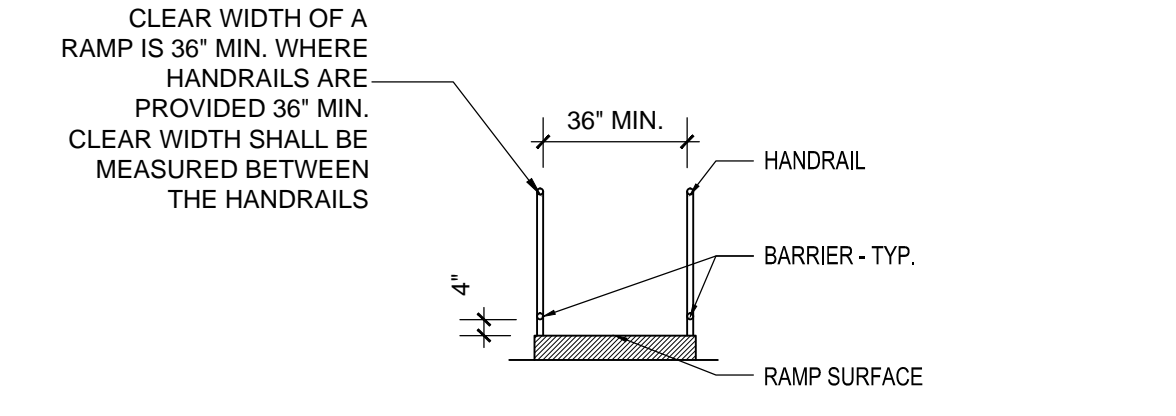
SLIDE SIDE FRONT APPROACH SLIDING DOORS



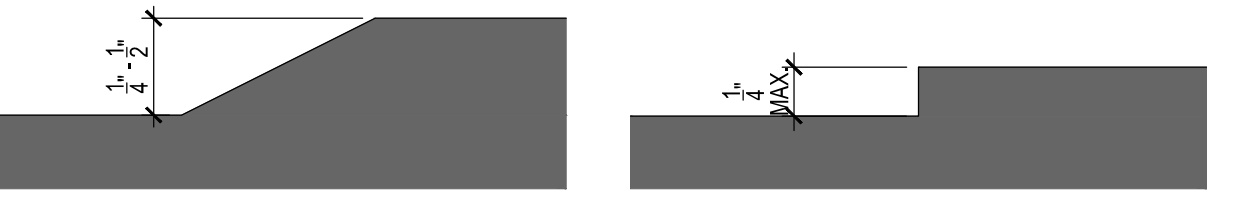
RAMP LANDINGS



WATER CLOSET FRONT VIEW



RAMP EDGE PROTECTION & BETWEEN HANDRAILS



CHANGES IN LEVEL

1600 SOUTH DIXIE HWY., SUITE 400
BOCA RATON, FLORIDA 33432
PHONE 561-391-0081 FAX 561-391-0085
EMAIL mail@rwb-arch.com

RWB
Linares
ARCHITECTURE

PROJECT # 14-067
DATE 05-19-16
SHEET #

A0.2

JUAN C. LINARES

AA26000640