

1.
2.
3.
4.
5.
6.
7.
8.
9.
10.

ALL AREAS, FINISHES, DIMENSIONS, AND PLANS INDICATED OR REPRESENTED BY THIS DRAWING ARE OWNED BY AND PROPERTY OF THE ARCHITECT, AND WHERE CREATED, ENLARGED, AND DEVELOPED FOR USE, AND IN CONNECTION WITH THE SPECIFIED PROJECT, NONE OF WHICH SHALL BE REPRODUCED, ARRANGED, AND PLANS SHALL BE USED BY OR DISCLOSED TO ANY PERSON, FIRM, OR CORPORATION FOR ANY PURPOSE WITHOUT WRITTEN PERMISSION OF RWB LINARES ARCHITECTURE, INC.

LIFE FELLOWSHIP
11401 WEST SAMPLE ROAD
CORAL SPRINGS, FL. 33065

1600 SOUTH DIXIE HWY., SUITE 400
BOCA RATON, FLORIDA 33432
PHONE 561-391-0081 FAX 561-391-0085
EMAIL mail@rwb-arch.com

RWB
Linares
ARCHITECTURE

PROJECT # 14067
DATE 05-19-16
SHEET #

A1.1

JUAN C. LINARES

AA26000640

KEYNOTES:

- *All keynotes may not apply.
- (X-X) KEYNOTE TYPE

ACCESSORIES

- A-1 WIRE SHELF AND ROD, PROVIDE P.T. BLOCKING
- A-2 WIRE SHELVES, PROVIDE P.T. BLOCKING
- A-3 BASE CABINETS
- A-4 UPPER CABINETS WITH LIGHTING INCLUDED, PROVIDE P.T. BLOCKING, SEE DETAIL 3/A6.0
- A-5 LINE OF DROPPED CEILING ABOVE-SEE REFLECTED CEILING PLANS
- A-6 60" WIDE REFRIGERATOR-FRIDGE COMBO
- A-7 THREE COMPARTMENT SINK
- A-8 HAND SINK
- A-9 DOUBLE OVEN FREE STANDING, SEE MEP PLANS
- A-10 DISPLAY CASE EQUIPMENT BY OTHERS, SEE MEP PLANS FOR LAYOUT AND INSTALLATION
- A-11 HERCULES SERIES 21" EXTRA WIDE BURGUNDY FABRIC STACKING CHURCH CHAIR WITH 4" THICK SEAT OR SIMILAR
- A-12 DOUBLE ENTRY BAPTISTERIES POOL (SEE MANUFACTURE DETAIL 3/A7.0 & MEP FOR DETAILS), PROVIDED PLATFORM COVER AND DRAIN
- A-13 FLOOR DRAIN (SEE MEP DWG'S.)
- A-14 16"x16" H. POOL PANEL ACCESS
- A-15 REMOVABLE PLATFORM COVER BY OTHERS
- A-16 4" BOLLARD
- A-17 CONCRETE WHEEL STOP
- A-18 30" x 60" ADA TRUNCATED DOME MAT
- A-19 ALUMINUM BENCH OR GRACK "BIKE HITCH" BY DERO
- A-20 30"x30"x36" TREE PLANTER WITH GRATES
- A-21 ANODIZED STOREFRONT (SEE DETAIL 2/A8.0) SHOP DWG'S TO BE PROVIDED FOR REVIEW AND APPROVAL
- A-22 IMPACT GLASS DOOR (SEE DOOR SCHEDULE)
- A-23 IMPACT GLASS WINDOW (SEE WINDOW SCHEDULE)
- A-24 IMPACT SOLID DOOR (SEE DOOR SCHEDULE)
- A-25 FIXED TEMPERED GLASS WINDOW (SEE WINDOW SCHEDULE)
- A-26 30" HEIGHT SERVICE COUNTER DESK (SEE SHOP DRAWINGS)
- A-27 36" HIGH ANODIZED CLASS-1 ALUMINUM RAILING WITH PIPE PICKET RAIL W/GRAB RAIL (TYP.) 1-1/2" PIPE RAILS, POSTS AND GRABRAIL 3/4" PIPE PICKETS @ 3.99" MAX. C.C.
- A-28 36" HIGH ANODIZED CLASS-1 ALUMINUM HANDRAIL (SEE DETAIL 2/A7.0)
- A-29 42" HIGH ANODIZED CLASS-1 ALUMINUM GUARDRAIL (SEE DETAIL 17/A7.0)
- A-30 LANDSCAPE AREA
- A-31 WALL-MOUNT BRUSHED STAINLESS STEEL MAILBOX

WALL FINISHES

- W-1 R-4.1 REFLECTED FOIL INSULATION AT PERIMETERS WALLS
- W-2 SMOKE SEPARATION PARTITION WITH ACOUSTICAL INSULATION
- W-3 INTERIOR PARTITION WITH ACOUSTICAL INSULATION
- W-4 +36" HIGH COUNTER WITH HALF HEIGHT PARTITION BELOW
- W-5 8" SPLIT FACE CONCRETE BLOCK, SEE ELEVATIONS FOR FINISH
- W-6 8" CONCRETE BLOCK WALL WITH (2 COATS) CEMENTITIOUS FINISH (STUCCO)
- W-7 STEEL COLUMN (SEE STRUCTURAL)
- W-8 8"x14" CONCRETE COLUMN (SEE STRUCTURAL)
- W-9 NOT USE
- W-10 2x2 SUSPENDED ACOUSTICAL CEILING TILES AREA (SEE A2.0)
- W-11 3 5/8" METAL STUD BRACING AT 48" O.C.
- W-12 MOVABLE FURNITURE WALL BY OWNER
- W-13 PROVIDED TILE ON 5/8" DENSISHELD TILE BAKER BOARD ON GALV. STEEL STUD (25 GA.)

FOUNDATION / FLOOR SYSTEM

- FND-1 5" CONCRETE SLAB ON 10 MIL VAPOR BARRIER - LAP SEAMS 12" AND TAPE - ON COMPACTED - TERMINATE INTERIOR FILL SEE STRUCT. FOR SLAB THICKNESS AND STEEL PLACEMENT
- FND-2 SCHEDULED FOOTING - SEE STRUCTURAL PLANS FOR SIZE AND STEEL PLACEMENT
- FND-3 30" HIGH WOOD PLATFORM, SEE STRUCTURAL
- FND-4 WOOD STAIRS, TREADS 1" OVERHANG TYP.
- FND-5 1" INTERLOCKING CONC. PAVERS ON POURED-IN PLACE CONCRETE SLAB WITH SLOPE
- FND-6 30" RECESSED SLAB WITH DRAIN FOR FUTURE BAPTISTERIES POOL (SEE STRUCTURAL)

ROOF

- RF-1 BUILT-UP ROOF SYSTEM W/R-19 INSULATION TO DRAIN (SEE SPECS) 3 PLY SBS
- RF-2 ROOF SCUPPER, (SEE DETAIL 3/A7.1) SEE MEP DWG'S
- RF-3 4x16 OVERFLOW SCUPPER, (SEE DETAIL 9/A7.1) SEE MEP DWG'S
- RF-4 6" Ø DOWNSPOUT RAIN WATER LEADER (SEE DETAIL 5/A7.1)
- RF-5 AC CONDENSING UNITS SITTING ON 18" HIGH METAL PLATFORM WITH LEGS, (SEE DETAIL 1/A7.1) SEE MEP DWG'S
- RF-6 RTU UNITS SITTING ON 18" HIGH METAL PLATFORM WITH LEGS, (SEE DETAIL 1/A7.1) SEE MEP DWG'S
- RF-7 12" CANTILEVER CONCRETE EYEBROW WITH 1/4" SLOPE, (SEE DETAIL 10/A7.1) SEE STRUCTURAL
- RF-8 12" CANTILEVER FRAMING STRUCTURE EYEBROW WITH 1/4" SLOPE, (SEE DETAIL 11/A7.1) SEE STRUCTURAL
- RF-9 4"x4" RECESSED GUTTER (SEE DETAIL 10/A7.1)
- RF-10 ROOF ACCESS LADDER (SEE DETAIL 7/A7.1)
- RF-11 STEEL JOIST (SEE STRUCTURAL FOR SIZE AND CONNECTIONS)
- RF-12 STEEL BEAM (SEE STRUCTURAL)

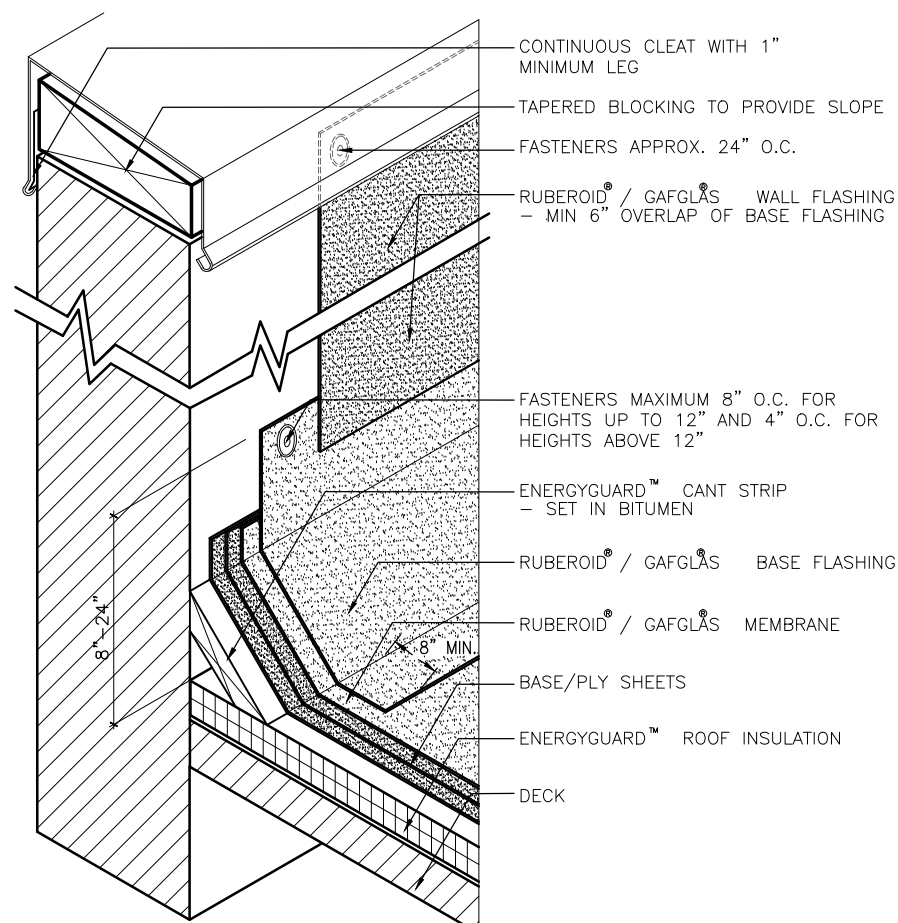
ELECTRICAL / MECHANICAL / PLUMBING

- EMP-1 ELECTRIC METER
- EMP-2 ELECTRICAL PANEL
- EMP-3 RTU UNIT
- EMP-4 AC CONDENSING UNIT
- EMP-5 AIR HANDLER
- EMP-6 MECHANICAL CHASE

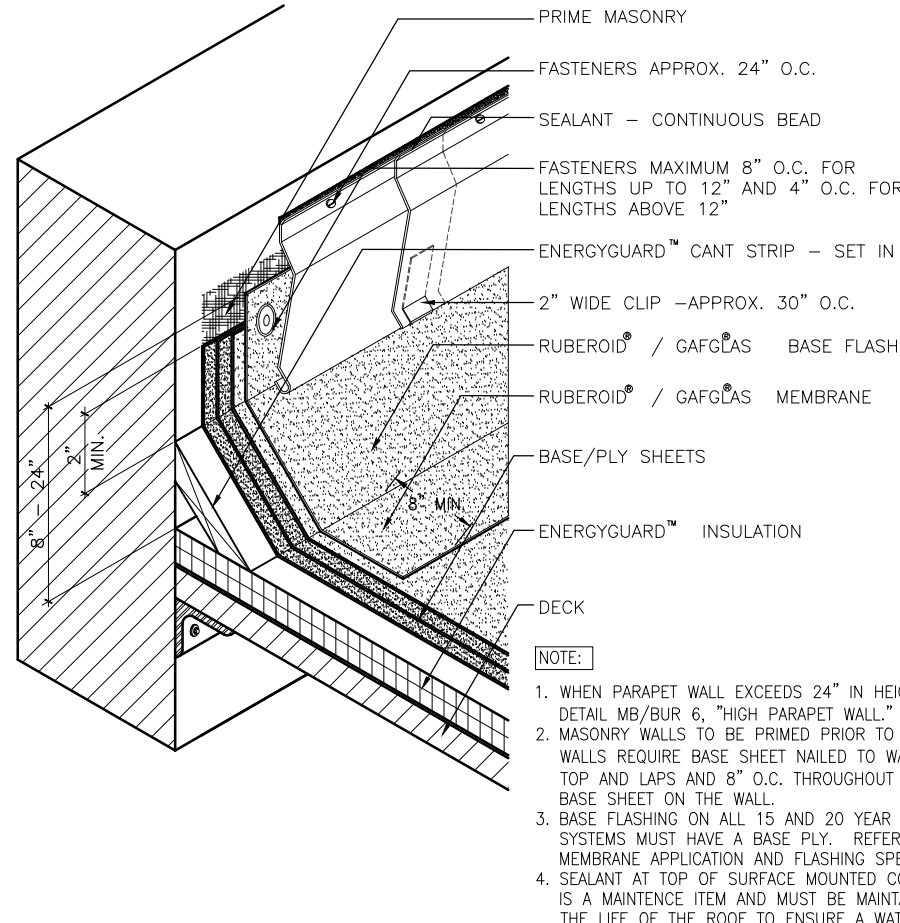
PLAN LEGEND

- 8" CONCRETE MASONRY UNIT
- INTERIOR PARTITION WALLS
- INTERIOR PARTITION WITH ACOUSTICAL INSULATION
- INTERIOR 1HR FIRE/SMOKE BARRIER PARTITION SEPARATION WITH ACOUSTICAL INSULATION
- DOOR TYPE
- KEYNOTES
- WINDOW TYPE TAG
- WALL TYPE
- 1/AS.0 INTERIOR ELEVATION / SECTION TAG
- [FEC] PORTABLE FIRE EXTINGUISHER (SEE L51.0)

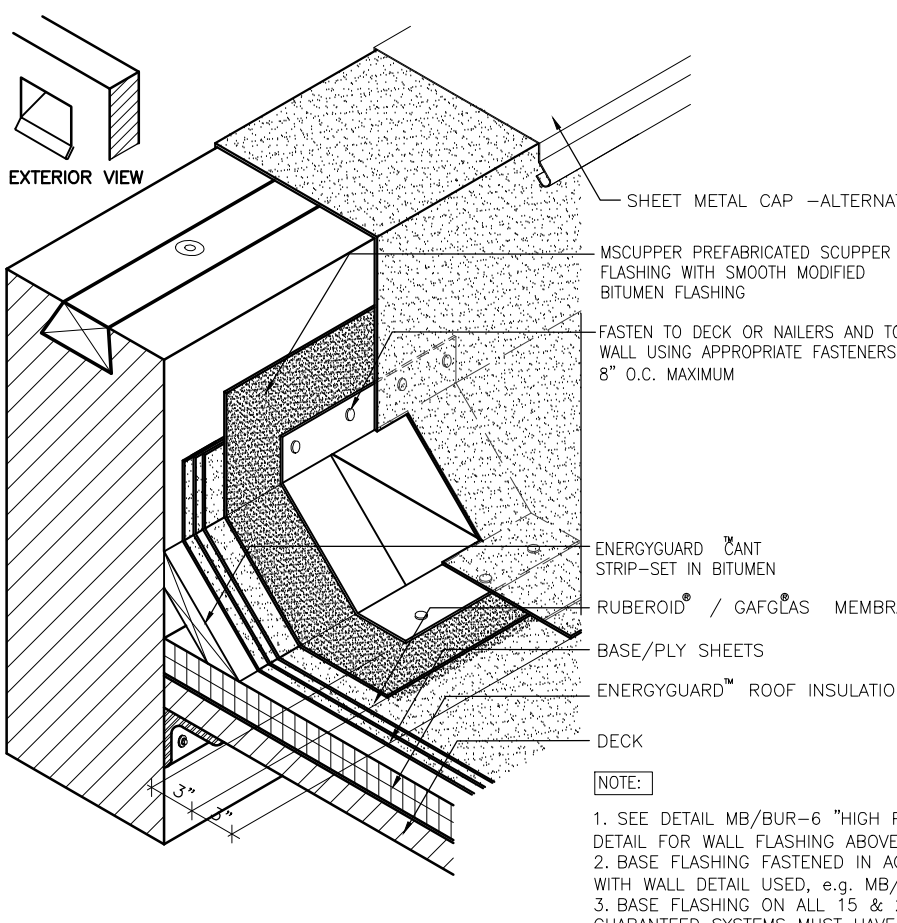
NOTES:
PROVIDE A VINYL REDUCER AT ALL THRESHOLDS AND AT ADJOINING DISSIMILAR FLOOR MATERIALS. PROVIDE A FLARED TILE REDUCER AT TILED THRESHOLDS. ALL CHANGES IN ELEVATION OR THRESHOLDS SHALL BE 1/4" OR 1/2" WHERE A FLARED THRESHOLD EXISTS.



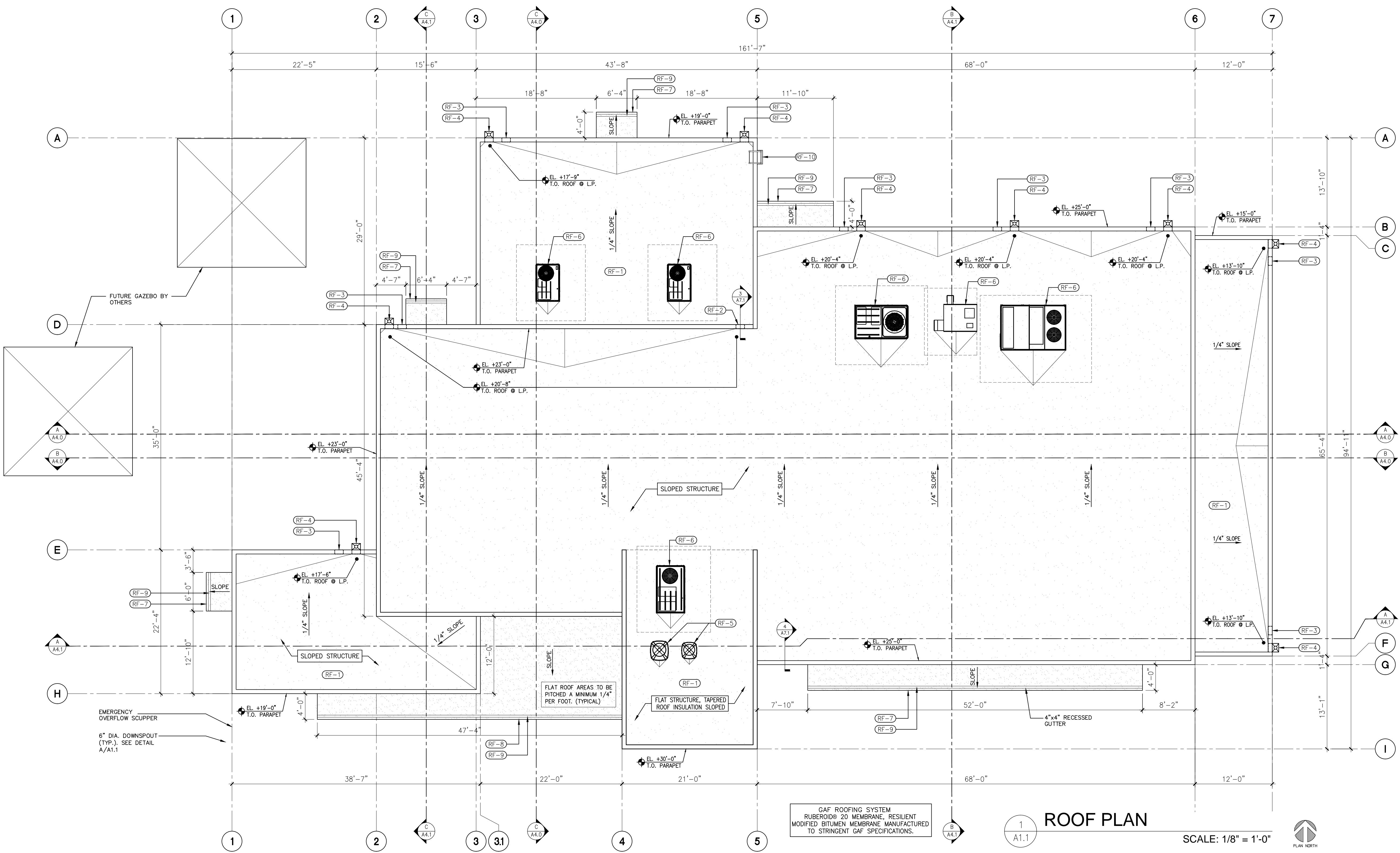
- NOTE:**
1. MASONRY WALLS TO BE PRIMED PRIOR TO FLASHING. WOOD WALLS REQUIRE BASE SHEET NAILED TO WALL 8" O.C. ALONG TOP AND LAPS AND 8" O.C. THROUGHOUT THE FIELD OF THE BASE SHEET ON THE WALL.
 2. REFER TO DETAIL MB / BUR 7 FOR ALTERNATE WALL FLASHING METHOD.
 3. FASTEN BASE FLASHING APPROXIMATELY 8" O.C. FOR HEIGHTS UP TO 12" AND 4" O.C. FOR HEIGHTS UP TO 24".
 4. FOR WALL FLASHINGS IN EXCESS OF 4" CONTACT GAF TECHNICAL SERVICES AT 1-800-ROOF-411.
 5. BASE FLASHING ON ALL 15 AND 20 YEAR GUARANTEE SYSTEMS MUST HAVE A BASE PLY. REFER TO FLASHING MEMBRANE APPLICATION AND FLASHING SPECIFICATION PLATES.
 6. SEALANT AT TOP OF SURFACE MOUNTED COUNTER FLASHING IS A MAINTENANCE ITEM AND MUST BE MAINTAINED THROUGHOUT THE LIFE OF THE ROOF TO ENSURE A WATER TIGHT SEAL.



- NOTE:**
1. WHEN PARAPET WALL EXCEEDS 24" IN HEIGHT, REFER TO DETAIL MB/BUR 6, "HIGH PARAPET WALL."
 2. MASONRY WALLS TO BE PRIMED PRIOR TO FLASHING. WOOD WALLS REQUIRE BASE SHEET NAILED TO WALL 8" O.C. ALONG TOP AND LAPS AND 8" O.C. THROUGHOUT THE FIELD OF THE BASE SHEET ON THE WALL.
 3. BASE FLASHING ON ALL 15 AND 20 YEAR GUARANTEE SYSTEMS MUST HAVE A BASE PLY. REFER TO FLASHING MEMBRANE APPLICATION AND FLASHING SPECIFICATION PLATES.
 4. SEALANT AT TOP OF SURFACE MOUNTED COUNTER FLASHING IS A MAINTENANCE ITEM AND MUST BE MAINTAINED THROUGHOUT THE LIFE OF THE ROOF TO ENSURE A WATER TIGHT SEAL.



- NOTE:**
1. SEE DETAIL MB/BUR-16 "HIGH PARAPET WALL" DETAIL FOR WALL FLASHING ABOVE 24".
 2. BASE FLASHING FASTENED IN ACCORDANCE WITH WALL DETAIL USED, @ 8" MB/BUR-3.
 3. BASE FLASHING ON ALL 15 & 20 YEAR GUARANTEED SYSTEMS MUST HAVE A BASE PLY.



GAF ROOFING SYSTEM
RUBEROID® 20 MEMBRANE, RESILIENT
MODIFIED BITUMEN MANUFACTURED
TO STRINGENT GAF SPECIFICATIONS.

ROOF PLAN

SCALE: 1/8" = 1'-0"

