

### LIGHTING LEGEND

SYMBOL	DESCRIPTION
[Symbol]	2'x4' PARABOLIC FLUORESCENT LIGHT FIXTURE 120V, 60Hz, 3x F32T8 LAMPS, MAX 85W INPUT TO BE SELECTED BY OWNER/ARCHITECT
[Symbol]	EMERGENCY LIGHT W/ BATTERY BACKUP FOR 90MIN. 2'x4' PARABOLIC FLUORESCENT LIGHT FIXTURE 120V, 60Hz, 3x F32T8 LAMPS, MAX 85W INPUT TO BE SELECTED BY OWNER/ARCHITECT
[Symbol]	2'x2' PARABOLIC FLUORESCENT LIGHT FIXTURE 120V, 60Hz, 2x F17T8 LAMPS, MAX 32W INPUT TO BE SELECTED BY OWNER/ARCHITECT
[Symbol]	LOW/MED BAY LED PENDANT LIGHT FIXTURE 120V, 60Hz, MAX 170W INPUT TO BE SELECTED BY OWNER/ARCHITECT
[Symbol]	EXIT SIGN WITH BATTERY BACK UP FOR 90 MIN. HATCH AREA INDICATES FACE OF SIGN ARROW INDICATES EXIT DIRECTION
[Symbol]	EMER. LIGHTING FIXTURE WITH BATTERY BACK-UP AND WITH SELF DIAGNOSTICS. (+12" ABOVE DOOR FRAME, U.N.D.) DUAL LITE L2 250 1 10W, 137LUMEN
[Symbol]	COMBINATION EMERGENCY LIGHT / EXIT SIGN WITH BATTERY BACK-UP FOR 90 MIN. AND WITH SELF DIAGNOSTICS. LITHONIA MDL# LHQM-S-R-N OR APPROVED EQUAL
[Symbol]	LIGHT SWITCH (+48" A.F.F. TO TOP. U.N.D.)
[Symbol]	3 WAY LIGHT SWITCH (+48" A.F.F. TO TOP. U.N.D.)
[Symbol]	1 POLE SWITCH, 20A, HP RATED
[Symbol]	2 POLE SWITCH, 30A, HP RATED
[Symbol]	DIMMER SWITCH (+48" A.F.F. TO TOP. U.N.D.)
[Symbol]	TIME SWITCH INTERMATIC T 101, 120V, 40A, SPST, OR EQUAL
[Symbol]	PIR OCCUPANCY/VACANCY SENSOR WALL SWITCH EATON, MDL# OSW-P-120/277V OR APPROVED EQUAL (+48" A.F.F. TO TOP. U.N.D.) *3" INDICATES 3-WAY SWITCH
[Symbol]	DIGITAL PROGRAMMABLE TIME SWITCH WALL MOUNTED INTERMATIC, MDL# ST01, 120/277V OR APPROVED EQUAL *3" INDICATES 3-WAY SWITCH (+48" A.F.F. TO TOP. U.N.D.)
[Symbol]	EXHAUST FAN (SEE MECHANICAL PLANS FOR SPECS)

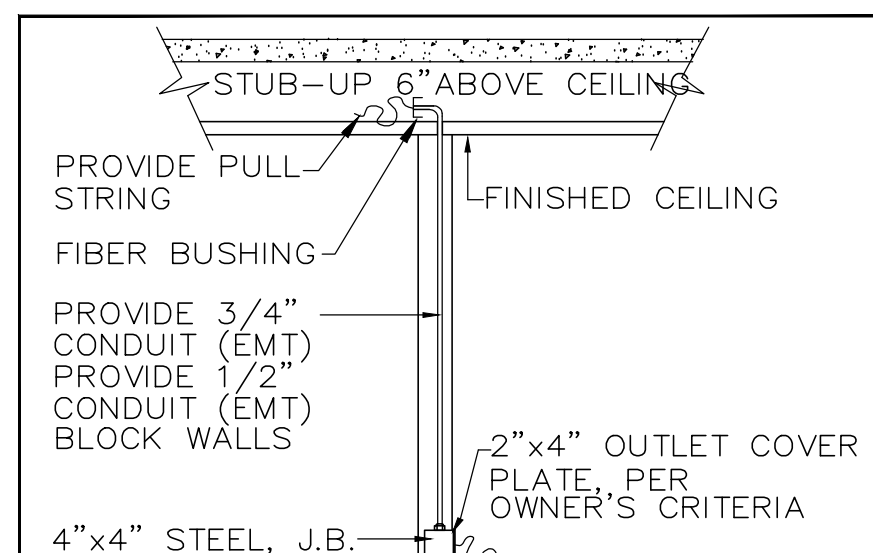
### POWER LEGEND

SYMBOL	DESCRIPTION
[Symbol]	SIMPLEX OUTLET (20A, +48" O.C. FROM A.F.F. U.N.D.)
[Symbol]	DUPLEX RECEPT. (15A, +18" O.C. FROM A.F.F. U.N.D.)
[Symbol]	DUPLEX RECEPTACLE INSTALLED ABOVE COUNTER (20A, +6" O.C., ABOVE COUNTER, U.N.D.)
[Symbol]	FLOOR MTD. DUPLEX RECEPTACLE (20A, U.N.D.)
[Symbol]	SWITCH DUPLEX (15A, +18" O.C. FROM A.F.F. U.N.D.)
[Symbol]	CEILING MTD. DUPLEX W/ PHONE/DATA (20A, U.N.D.) IN SEPERATE RACEWAYS
[Symbol]	SPECIAL PURPOSE RECEPT. (30A, +18" O.C. A.F.F. U.N.D.)
[Symbol]	JUNCTION BOX (4X4" GALVANIZED STEEL, 18" U.N.D.)
[Symbol]	DATA/TELEPHONE OUTLET (+18" O.C. A.F.F. U.N.D.) HATCH AREA INDICATES PHONE PROVIDE 3/4" EMT W/ PULL STRING HOMERUN TO 6" ABOVE THE CEILING FOR EACH DEVICE (SINGLE OR COMBO). FACE PLATES, JACKS AND CABLING TO BE BY TENANT
[Symbol]	SMOKE DETECTOR
[Symbol]	REMOTE SMOKE DUCT DETECTOR (+72" A.F.F. U.N.D.) TEST, RESET, & ANNUNCIATE FOR: POWER, ALARM, & TRBL.
[Symbol]	TV, CABLE BOX, SATELLITE BOX CONNECTION OUTLET
[Symbol]	HP RATED DISCONNECT (+60" O.C. A.F.F. U.N.D.) NEMA 3R FOR EXTERIOR AND NEMA 1 FOR INTERIOR.
[Symbol]	PANELBOARD (+60" A.F.F. O.C. OF PNL, U.N.D.)
[Symbol]	ELECTRICAL METER (+60" A.F.F. O.C. OF MTR, U.N.D.)
[Symbol]	PHASE
[Symbol]	NEUTRAL
[Symbol]	ISOLATED GND.
[Symbol]	FUSE SIZE (NEMA RATING)
[Symbol]	FRAME SIZE
[Symbol]	WIRE IN FREE AIR SUPPORTED TO BLDG. STRUCTURE
[Symbol]	NUMBER OF POLES

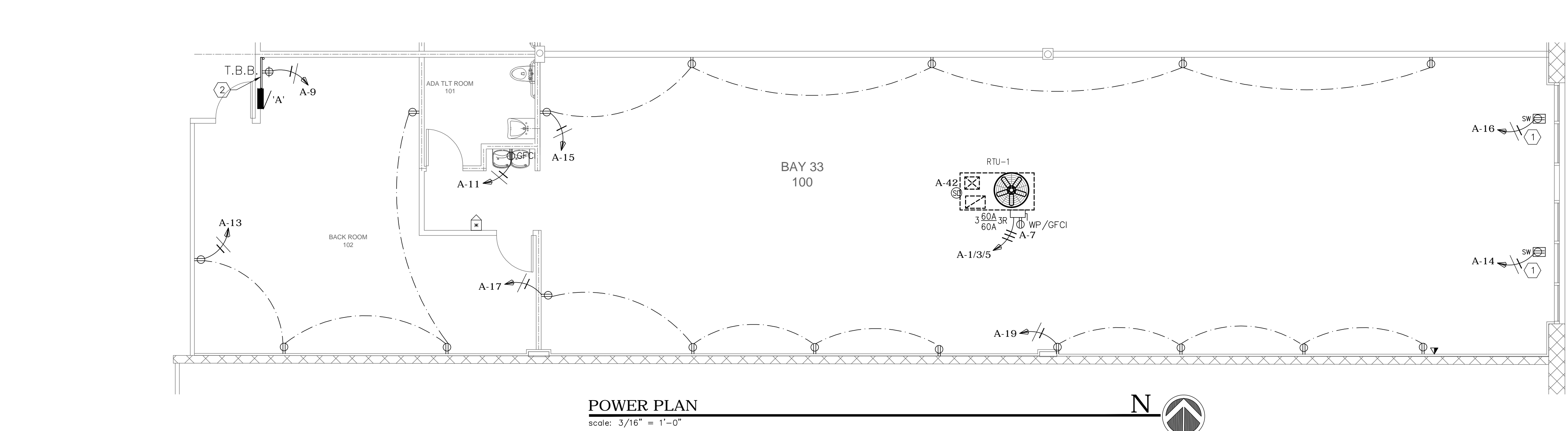
### LEGEND NOTES

- NOT ALL SYMBOLS MAY APPEAR ON PLANS.
- IF THERE IS NO DESIGNATION NEXT TO FIXTURE, THEN ASSUME IT IS A NEW FIXTURE. IF NOT EXISTING, LOCATE IT AS SHOWN ON PLANS.
- PROVIDE A DISCONNECTING MEANS FOR ALL DOUBLE ENDED FLUORESCENT LAMPS WITH BALLAST AS PER NEC 2011 410.73(G).

DESIGNATION / DESCRIPTION	UNLESS NOTED DIFFERENTLY
+84"	FINISHED FLOOR
AFD	AIRC. FAULT CIRCUIT INTERRUPT
GFI	GROUND FAULT CIRCUIT INTERRUPT
MP	WEATHER PROOF ENCLOSURE
IG	ISOLATED GROUND
N	NEW FIXTURE
R	RELOCATED FIXTURE
E	INDICATES AN EXISTING FIXTURE TO REMAIN
T/L	TWIST LOCK
UND	UNLESS NOTED DIFFERENTLY
N/L	NIGHT LIGHT
T/S	TIME SWITCH
PC	PHOTO CELL
LC	LIGHTING CONTACTOR
MWC	MINIMUM WORK CLEARANCE
OSP	OVER CURRENT PROTECTION
OC	ON CENTER
EN	EXISTING LOCATION WITH NEW DEVICE
SW	SHOW WINDOW (OUTLET)

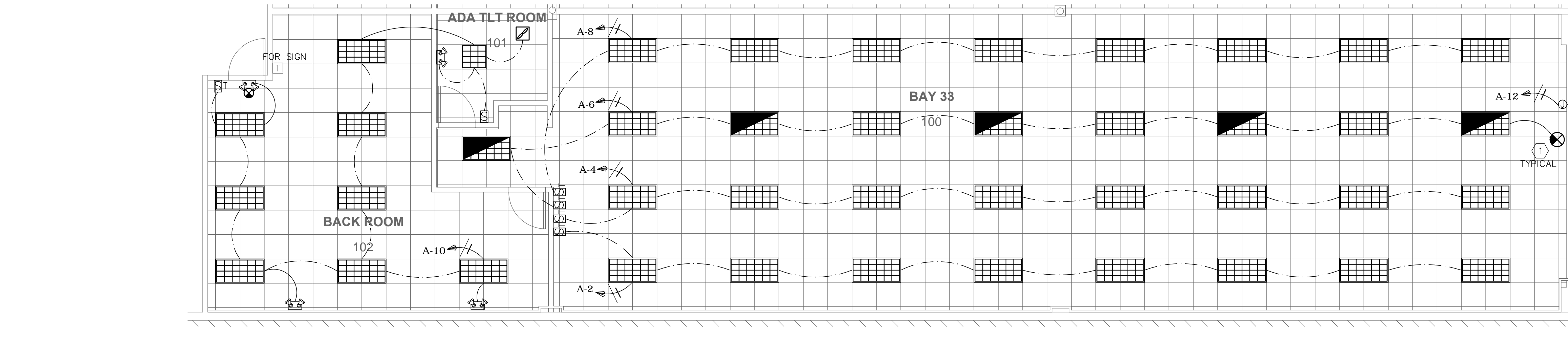


LOW VOLTAGE OUTLET DETAIL  
N.T.S. 1



POWER PLAN  
scale: 3/16" = 1'-0"

- NOTES:**
- SHOW WINDOWS RECEPTACLE. COORDINATE EXACT LOCATION WITH ARCHITECT / OWNER PRIOR TO ROUGH IN.
  - PROPOSED LOCATION FOR TELECOM BOARD. PROVIDE #6AWG CU GND TO MAIN GROUNDING SYSTEM.
  - TELEPHONE/DATA/CATV NOTE:
- AN EMPTY CONDUIT SYSTEM IS PROVIDED TO SERVE FUTURE TENANT SPACES. TENANT SHALL BE RESPONSIBLE AS PART OF THEIR TENANT SPACE FINISH IMPROVEMENT DWGS TO BE SUBMITTED UNDER A SEPARATE PERMIT TO PULL TELEPHONE, DATA AND CABLE TV SERVICE CABLES TO THEIR SPACE/EQUIPMENT FROM THE GROUND FLOOR MAIN TELEPHONE ROOM AS REQUIRED.



LIGHTING PLAN  
scale: 3/16" = 1'-0"

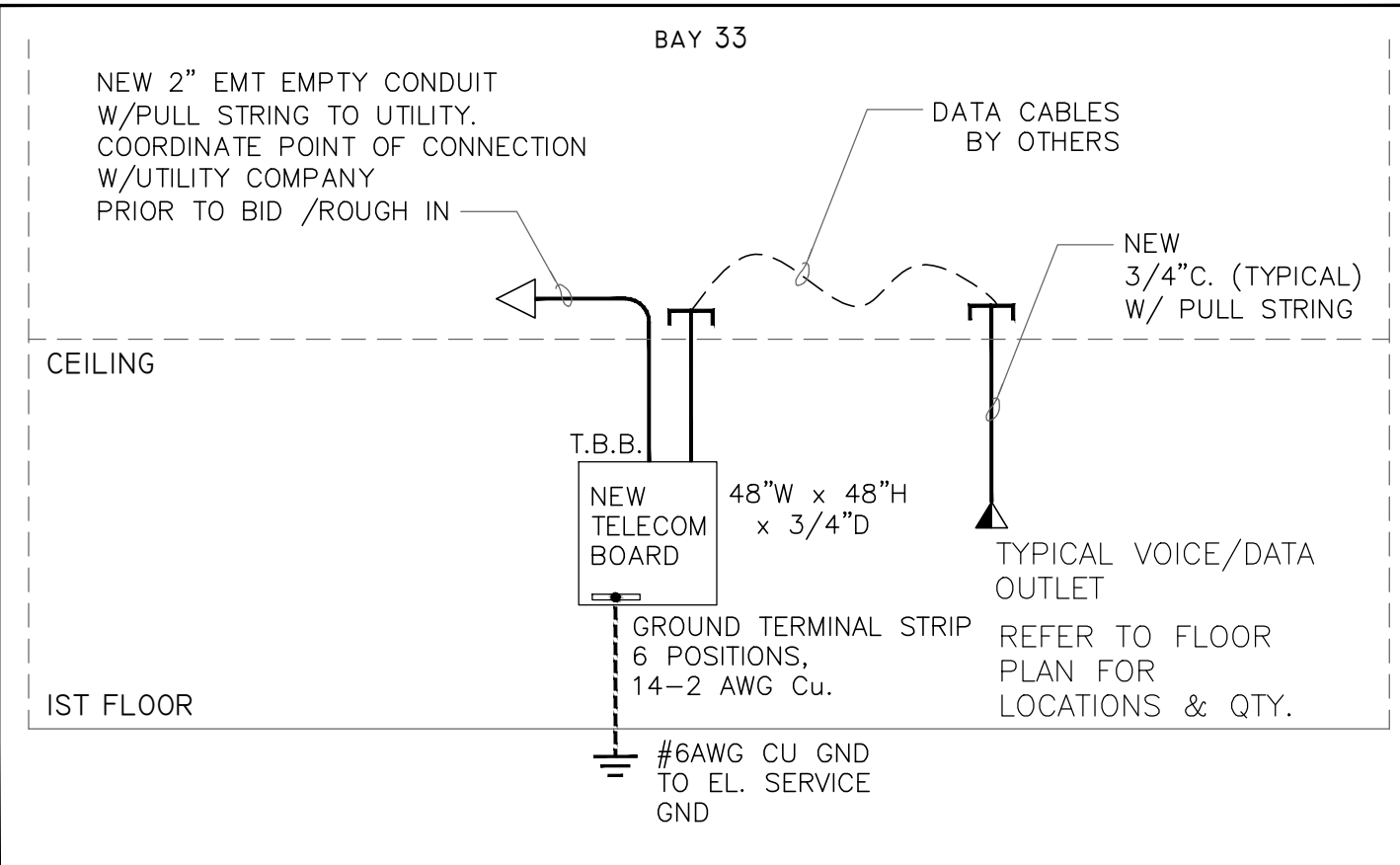
- KEY NOTES:**
- CONNECT ALL EXIT SIGNS AND EMERGENCY LIGHTS TO LOCAL LIGHT CIRCUIT AHEAD OF ANY SWITCHES OR RELAYS. PROVIDE UNSWITCHED HOT.
  - COORDINATE EXACT LOCATION WITH ARCHITECT / OWNER PRIOR TO BID / ROUGH IN. PROVIDE CONDUIT STUB OUT W/ PULL STRING. RUN CIRCUIT THROUGH TIME SWITCH LOCATED NEXT TO PANEL "A".

### LIGHTING LEVELS PER FBC 2014 Energy Conservation Chapter 4

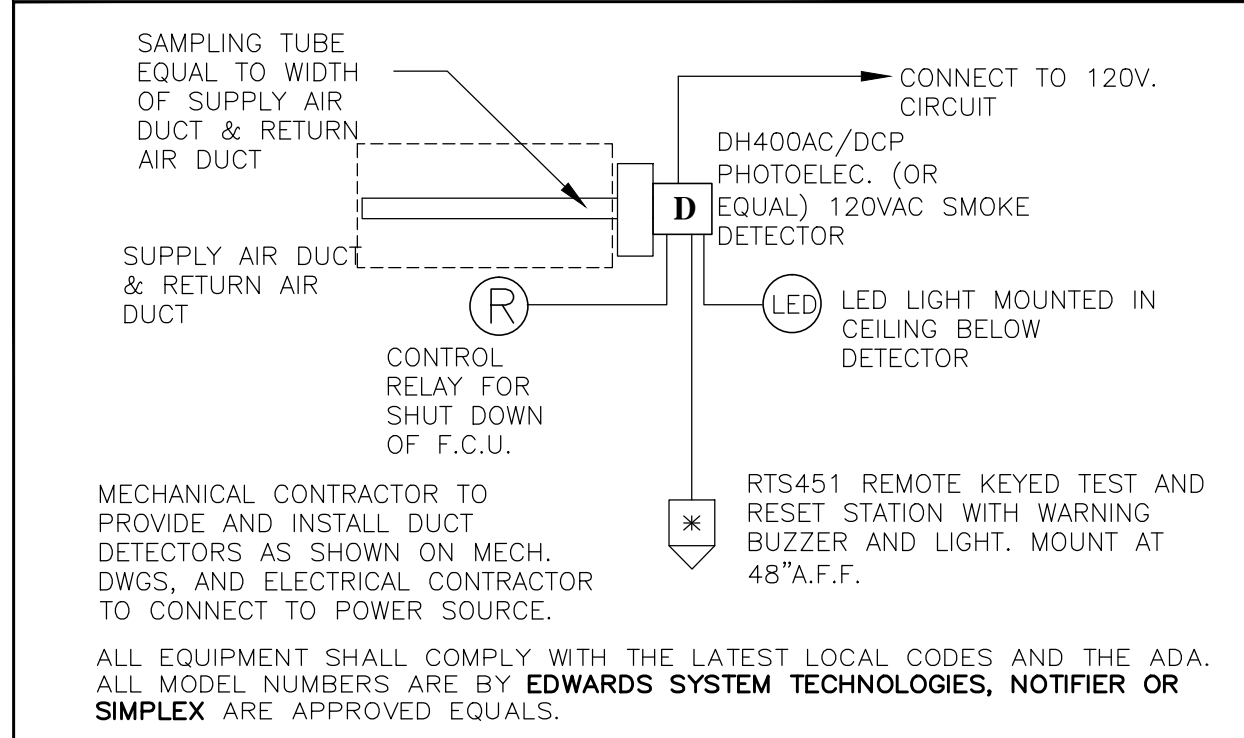
#### BUILDING AREA METHOD

BUILDING AREA TYPE	AREA [sq.ft.]	MAX. LPD [VA/sq.ft.]	MAX LP [VA]	LP PROVIDED [VA]	LPD PROVIDED [VA/sq.ft.]
BAY 33 (RETAIL)	2750	1.4	3850	3570	1.3

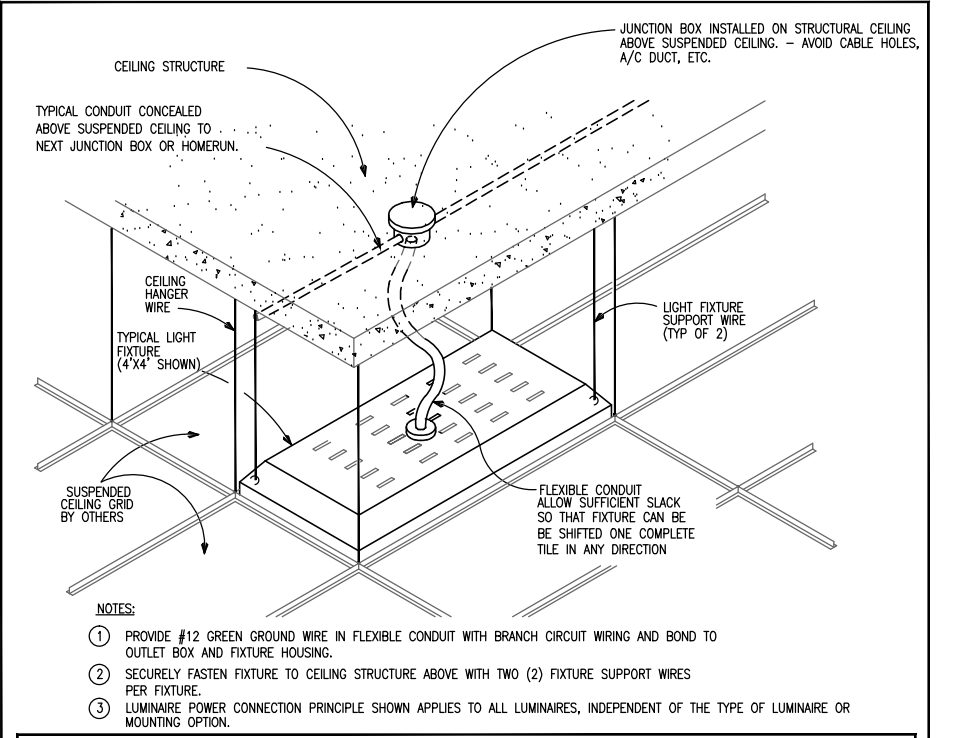
LP - LIGHTING POWER  
LPD - LIGHTING POWER DENSITY  
LP BASED ON NON-SIMULTANEOUS USER OPERATION, HIGHEST WATTAGE



VOICE / DATA RISER DETAIL  
N.T.S. 2



DUCT SMOKE DETECTOR DETAIL  
N.T.S. 3



GENERAL LIGHTING FIXTURE POWER CONNECTION DETAIL  
N.T.S. 4

### NOTES TO CONTRACTOR

- REFER TO ARCHITECTURAL REFLECTED CEILING PLAN DRAWINGS FOR ACTUAL LOCATIONS OF ALL CEILING LIGHTS AND DEVICES.
- ELECTRICAL DRAWINGS SHALL NOT BE USED TO LOCATE FIXTURES.
- COORDINATE WITH ARCHITECT/CLIENT TYPE AND COLOR OF SWITCH/RECEPTACLE PLATES.
- REFER TO ARCHITECT FOR ALL FINAL LOCATIONS/DEVICES PRIOR TO BID/ROUGH IN.

	<p><b>AMERICAN UNITED Engineers Inc.</b> Dedicated to Excellence</p> <p><b>AUE</b> CA # 29803</p> <p>4508 SW 24th Street Fort Lauderdale, FL 33317 Tel: (954) 471-6627 americaneng@comcast.net</p>	<p>project no. 1623.00</p>
	<p>date</p>	

# CCS

ARCHITECTURAL ENTERPRISES, INC.  
499 East Palmetto Park Rd.  
Suite 204  
Boca Raton, FL 33432

T 561.479.9884  
www.ccsarch.com  
Florida Registration Number  
AA26001852

**CONSULTANTS:**

**STRUCTURAL ENGINEERING:**  
STRUCTURES INTERNATIONAL, INC.  
7501 Wiles Rd.  
Coral Springs, FL 33067  
(954) 227-1512

**ELECTRICAL, MECHANICAL,  
PLUMBING:**  
AMERICAN UNITED ENGINEERS  
4508 SW 24TH STREET  
FORT LAUDERDALE, FL 33317  
PHONE: (954) 471-6657

**PROJECT:**

BAY 33  
WESTGATE SHOPPING CENTER  
100 N STATE ROAD 7  
LAUDERDALE LAKES, FL 33317

INTERIOR IMPROVEMENTS

### FINAL CONTRACT DOCUMENTS

PROJECT NUMBER:	2016.00-1
DATE:	06-06-2016
CAD FILE NO.:	

### ADDENDA/REVISIONS

NO.	DATE	DESCRIPTION

SEAL:

CYNTHIA C. SPRAY, AIA AR-94167

DRAWING TITLE:  
**ELECTRICAL PLAN**

DRAWING NO: **E-1**