

- ⊕ DUPLEX OUTLET 120V
- ⊕ QUAD RECEPTACLE 120V
- ⊕ RECEPTACLE @ CEILING 120V
- ⊕ FLOOR RECEPTACLE
- ⊕ 220 VOLT OUTLET
- ⊕ DISCONNECT
- ⊕ ELECTRIC METER
- ⊕ ELECTRIC PANEL
- ▽ TELECOMMUNICATION OUTLETS TO BE DOUBLE-GANGED; EACH CONNECTED BY 1/2" CONDUIT WITH TWO(2) PULL-STRINGS (FOR TELEPHONE AND/OR OTHER HIGH-SPEED ACCESS) WITH A STANDARD WHITE BLANK COVER PLATE.
- NOTE: CONTRACTOR TO COORDINATE THE INSTALLATION OF ALL REQUIRED TELEPHONE AND TELECOMMUNICATIONS EQUIPMENT, INCLUDING CABLE, WIRING AND WALL JACKS TO THEIR RESPECTIVE OFFICE AREAS WITH OWNER/AGENT.
- TV
- GFI GROUND-FAULT INTERRUPTER
- WP WATER PROOF
- ⊕ JUNCTION BOX
- NOTE: ALL RECEPTACLES TO BE @ 15" AFF TO BOTTOM OF RECEPTACLE UNLESS NOTED OTHERWISE OR ABOVE COUNTER.
- ⊕ RECESSED HIGH HAT
- ⊕ VAPOR PROOF
- ⊕ SURFACE MOUNTED
- ⊕ PUSH BUTTON
- SINGLE STRIP FLUORESCENT
- N2X4, 18 CELL, PARABOLIC, RECESSED FLUORESCENT LIGHT FIXTURES WITH ELECTRONIC BALLAST, AND UTILIZE WARM WHITE LAMPS.
- N2X4, 18 CELL, PARABOLIC, RECESSED FLUORESCENT LIGHT FIXTURES WITH ELECTRONIC BALLAST, AND UTILIZE WARM WHITE LAMPS.
- TRACK LIGHTING
- WALL MOUNTED LIGHT FIXTURE TO BE HIGH-PRESSURE-SODIUM, 150 WATT, WITH "DUSK-TO-DAWN" LIGHT SENSOR AND MANUAL OVERRIDE.
- FLOOD LIGHTS
- EXIT LIGHT WITH BATTERY BACKUP, LESS THAN 7W PER FACE.
- COMBO EMERGENCY/EXIT LIGHT WITH BATTERY BACK UP LESS THAN 7W PER BACK FACE
- EXHAUST FAN
- SWITCH
- 3 WAY SWITCH
- 4 WAY SWITCH
- SMOKE DETECTOR
- CARBON MONOXIDE (CO) SENSOR: HARDWIRED, 120 VOLT DETECTOR WITH BATTERY BACKUP.
- DOOR CHIME
- NOTE: ALL SWITCHES TO @ 42" AFF TO BOTTOM OF SWITCH UNLESS NOTED OTHERWISE.
- SINGLE STRIP FLUORESCENT

**SMOKE DETECTOR NOTE**  
SMOKE DETECTORS SHALL BE HARDWIRED TO BATHROOM OR KITCHEN CIRCUIT AND WITH BATTERY BACKUP. INTERCONNECT TO ALL OTHER SMOKE DETECTORS SO THAT ALL WILL SOUND. (FBC 905.2) AND (NFPA 101 243.4)  
NEC 408.11 TAMPER RESISTANT RECEPTACLES REQUIRED IN ALL AREAS SPECIFIED IN 210.52.

**CIRCUIT NUMBERS ON PLANS ARE FOR EQUIPMENT SING ONLY. ACTUAL CIRCUITRY TO BE DETERMINED IN FIELD.**

**ALL RECEPTACLES IN DINING, LIVING, SLEEPING, CLOSET, FAMILY ROOM TO BE ARC FAULT PROTECTED. UNO**

**ALL COUNTER OUTLETS TO BE GFI PROTECTED. UNO**

**ALL AREAS SPECIFIED IN NEC 210.12(B) TO BE ARC FAULT PROTECTED**

**ELECTRICAL NOTES**

ALL ELECTRICAL WORK SHALL BE PERFORMED IN ACCORDANCE WITH THE FBC 2014, NEC 2011, NFPA 402 AND ALL APPLICABLE CODES OR AUTHORITIES HAVING JURISDICTION OVER THIS PROJECT.

CONTRACTOR SHALL VERIFY WITH POWER CO. THE LOCATION OF SERVICE AND SHALL LOCATE METER AND PANELS AS REQUIRED

ALL BRANCH CIRCUITS THAT SUPPLY 125-VOLT SINGLE-PHASE INSTALLED IN BED ROOMS SHALL BE PROTECTED BY AN ARC-FAULT CIRCUIT INTERRUPTER

ALL WIRE SHALL BE THW COPPER UNLESS OTHERWISE NOTED

ALL BRANCH CIRCUITS IN RACEWAYS OR NON-METALLIC SHEATHED CABLE

COORDINATE RACEWAY INSTALLATIONS WITH OTHERS TRADES PRIOR TO CONSTRUCTION

PROVIDE DISCONNECT SWITCH OF SIZE AS REQUIRED OTHERWISE NOTED

PROVIDE ON-FUSIBLE GENERAL DUTY SAFETY SWITCHES AT A/C EQUIPMENT, AND AT PUMPS NOT VISIBLE FROM CIRCUIT BREAKER PANEL AND AS PER MANUFACTURER'S RECOMMENDATIONS.

PROVIDE WATER PROOF BUBBLE COVERS ON RECEPTACLES EXPOSED TO WET AREAS

PROVIDE GFI TRIP CONTROLLER WITH IN SIGHT OF ALL RECEPTACLES IT CONTROLLER

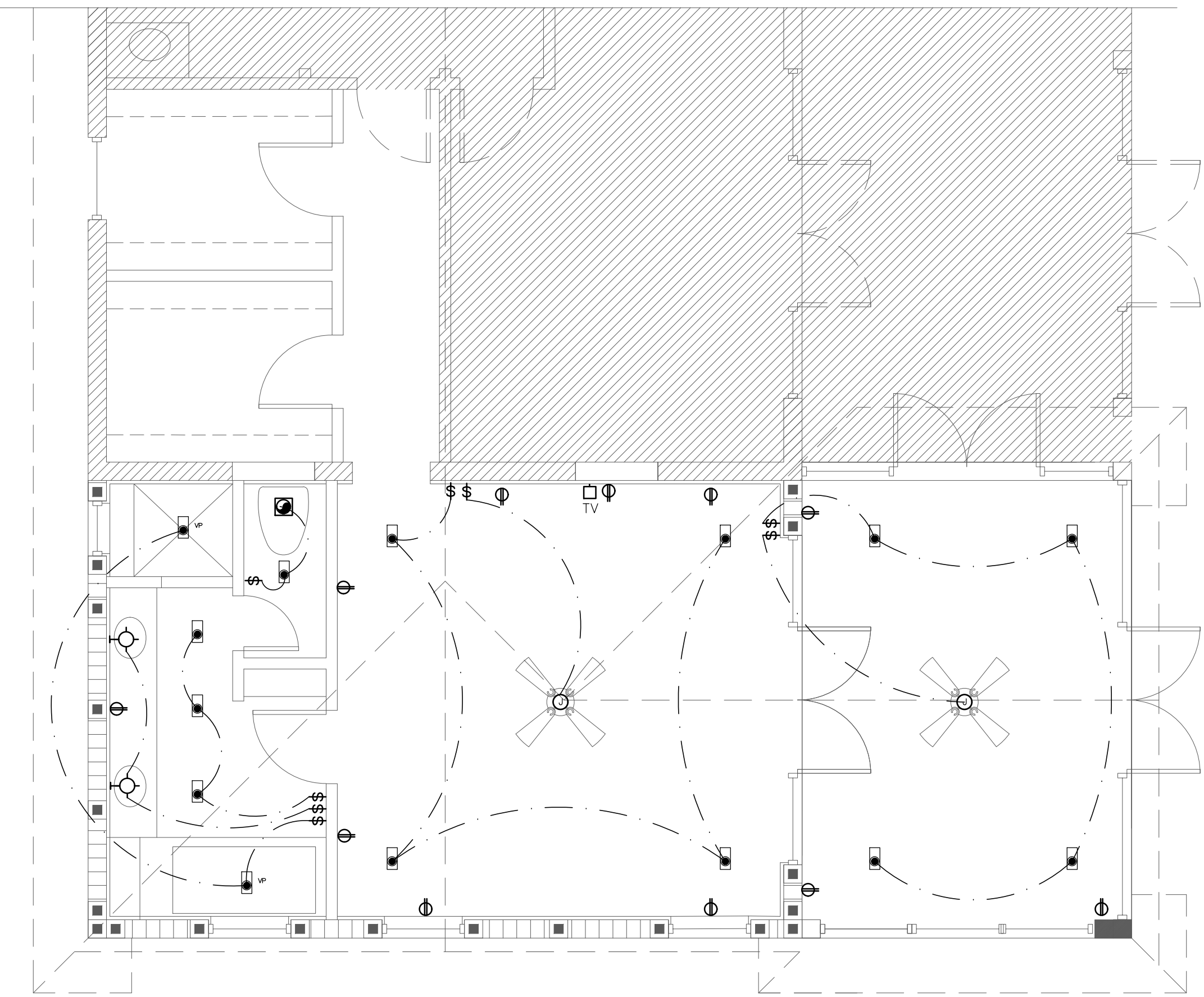
PROVIDE 20 AMP GFI BREAKERS #12 WIRE W/20 AMP PULLS FOR ALL BATHROOMS, GARAGE, KITCHEN, LAUNDRY & EXTERIOR RECEPTACLES

ALL PANEL BOARDS PROVIDED WITH A TYPEWRITTEN SCHEDULE SHOWING CIRCUIT NUMBERS AND A COMPLETE DESCRIPTION OF EACH CIRCUIT.

ALL ELECTRICAL WIRING DEVICES INDICATED TO BE INSTALLED IN MASONRY WALLS OR FLOORS SHALL BE FLUSH MOUNTED, INCLUDING BRANCH CIRCUIT PANEL BOARD UNLESS OTHERWISE NOTED. THE CONDUITS TO ASSOCIATED ELECTRICAL EQUIPMENT SHALL BE CONCEALED IN WALLS OR FLOOR.

CONTRACTOR SHALL VERIFY EXACT LOCATION OF FIXTURES AND OUTLETS AT JOB SITE BEFORE ROUGHING-IN.

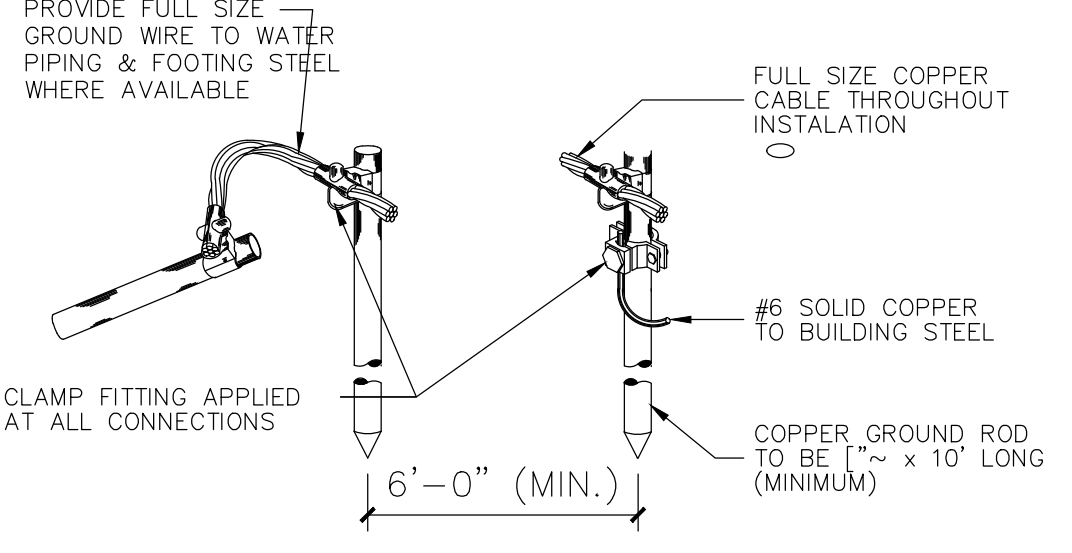
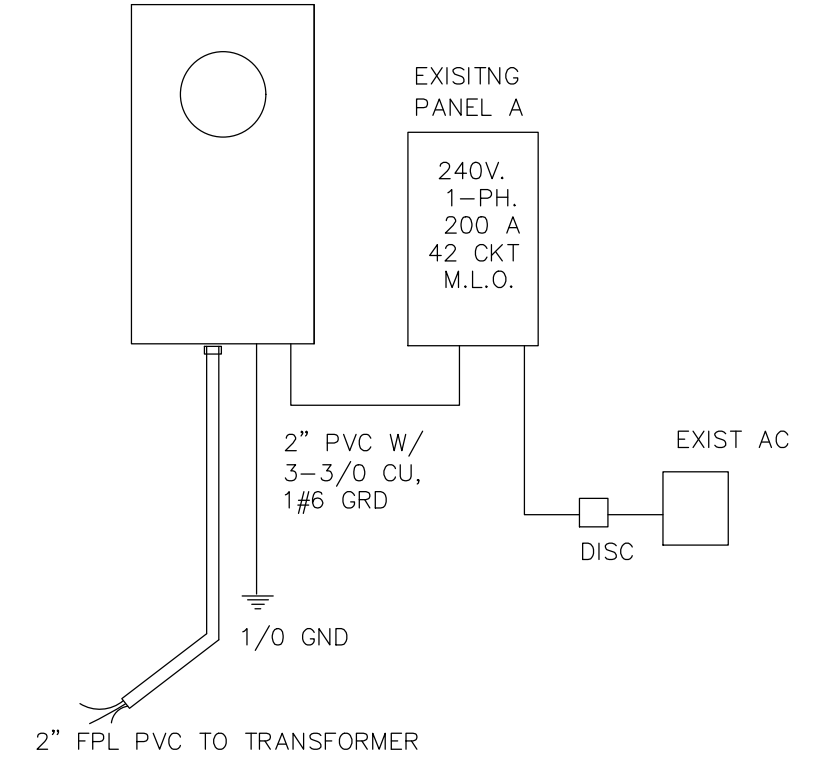
THE ELECTRICAL CONTRACTOR SHALL COORDINATE THE EXACT LOCATION OF ALL ELECTRICAL EQUIPMENT AND IT'S GIVE LOAD WITH OTHER TRADES. BEFORE



**ELECTRICAL PLAN**  
SCALE: 1/8" = 1'-0"  
1  
E-1

RESIDENCE	9,567
3189 SF X 3W/FT	
LIGHTING AND REC	9,567
RANGE	7300
SMALL APPLIANCE	1500
SMALL APPLIANCE	1500
DISPOSAL	1000
REF	1500
DRYER	4500
MICROWAVE	1500
DW	1500
WASHER	1500
LAUNDRY	1500
CEILING FAN (5)	500
EAH	5000
APPLIANCE LOADS	27,300

LIGHTING AND REC	9,567
APPLIANCE LOAD	27,300
	36,867
FIRST 10,000 AT 100%	10,000
BALANCE 26,867 AT 40%	10,746
	20,746
AC HEAT STRIP 1	10,000
	30,746
30,746/240 = 120	
EXISTING SERVICE - 20 AMPS	



NOTE: PROVIDE ONE, OR AS MANY GROUND RODS AS NECESSARY TO COMPLY WITH GROUNDING RESISTANCE AS REQUIRED BY NEC-250.

CODE  
 ■ FLORIDA BLDG CODE 2014 W/ SUPPLEMENTS  
 ■ FLORIDA EXIST. BLDG CODE 2014  
 ■ FLORIDA FIRE PREV CODE 2012 5TH EDITION  
 ■ NEC 2011

BEDROOM EXPANSION  
 13460 IMPERIAL POINT LANE  
 WELLINGTON, FL

Revisions:

ALL IDEAS, DESIGN, ARRANGEMENTS AND PLANS INDICATED OR REPRESENTED BY THIS DRAWING ARE OWNED BY RICHARD BARNES AND THE PROPERTY OF THIS OFFICE AND WERE CREATED, EVALUATED AND DEVELOPED FOR USE ON, AND IN CONNECTION WITH THE SPECIFIC PROJECT. NONE OF SUCH IDEAS, DESIGN, AND ARRANGEMENTS OR PLANS SHALL BE USED BY OR DISCLOSED TO ANY PERSON, FIRM OR CORPORATION FOR ANY PURPOSE WHATSOEVER WITHOUT WRITTEN PERMISSION OF RICHARD BARNES. WRITTEN DIMENSIONS ON THESE DRAWINGS SHALL HAVE PRECEDENCE OVER SCALE DIMENSIONS. CONTRACTOR SHALL VERIFY AND BE RESPONSIBLE FOR ALL DIMENSIONS AND CONDITIONS ON THE JOB AND THIS OFFICE MUST BE NOTIFIED OF ANY VARIATIONS FROM THE DIMENSIONS AND CONDITIONS AS SHOWN ON THESE DRAWINGS.

RICHARD BARNES ARCHITECTURAL DESIGN SERVICES LLC  
 1807 E. TER. DR. LAKE WORTH, FL 33460  
 (561) 574-1027

DRAWN  
 CHECKED  
 DATE 4-26-16  
 SCALE AS NOTED  
 FOR PERMIT  
 SHEET  
 E1  
 OF SHEETS