

REVISIONS

1	
2	
3	
4	
5	
6	
7	
8	
9	
10	

1. ALL WORK SHOWN IS TO BE INSTALLED UNLESS OTHERWISE NOTED.
 2. ALL WORK IS TO BE INSTALLED UNLESS OTHERWISE NOTED.
 3. ALL WORK IS TO BE INSTALLED UNLESS OTHERWISE NOTED.
 4. ALL WORK IS TO BE INSTALLED UNLESS OTHERWISE NOTED.
 5. ALL WORK IS TO BE INSTALLED UNLESS OTHERWISE NOTED.
 6. ALL WORK IS TO BE INSTALLED UNLESS OTHERWISE NOTED.
 7. ALL WORK IS TO BE INSTALLED UNLESS OTHERWISE NOTED.
 8. ALL WORK IS TO BE INSTALLED UNLESS OTHERWISE NOTED.
 9. ALL WORK IS TO BE INSTALLED UNLESS OTHERWISE NOTED.
 10. ALL WORK IS TO BE INSTALLED UNLESS OTHERWISE NOTED.

EQUIPMENT DISCONNECTS:

CONNECTOR TO MAINLINE 30" WIRE AND 3'-0" FREE CLEARANCE
 ABOVE ALL ELECTRICAL EQUIPMENT EXCEPT ALL
 EQUIPMENT FIT EQUIPMENT BLOWERS IN THE CONDUIT
 SHALL BE 6" ABOVE THE EQUIPMENT. MINIMUM
 MINIMUM CLEARANCE SHALL BE 3'-0" OF THE EQUIPMENT.

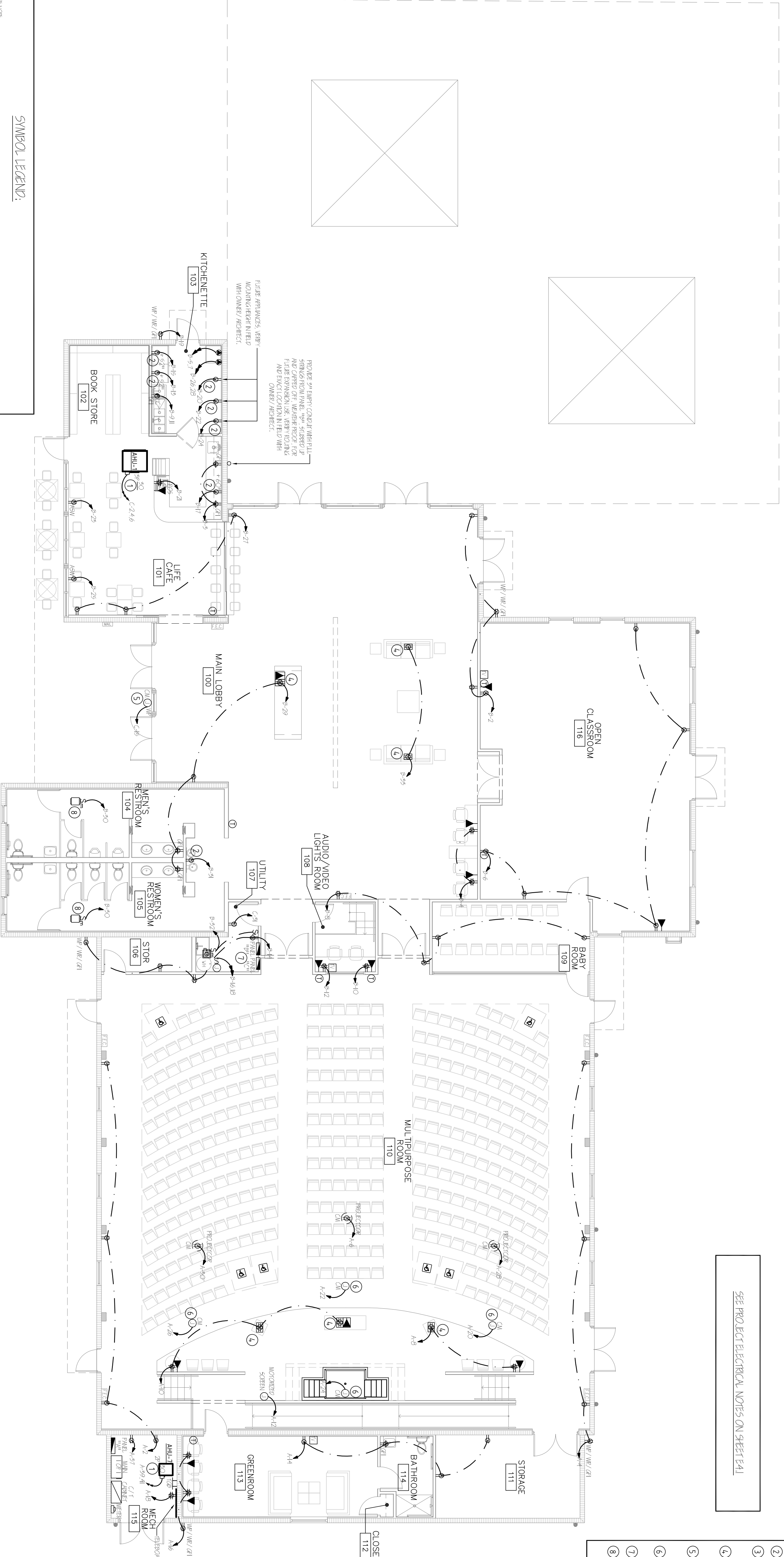
ELECTRICAL PLAN REVISIONS:

1. PROJECT #245 IS TO BE RECONNECTED BY EQUIPMENT MANUFACTURER.
 2. PROJECT #110 IS TO BE RECONNECTED BY EQUIPMENT MANUFACTURER.
 3. PROJECT #110 IS TO BE RECONNECTED BY EQUIPMENT MANUFACTURER.
 4. PROJECT #110 IS TO BE RECONNECTED BY EQUIPMENT MANUFACTURER.
 5. PROJECT #110 IS TO BE RECONNECTED BY EQUIPMENT MANUFACTURER.
 6. PROJECT #110 IS TO BE RECONNECTED BY EQUIPMENT MANUFACTURER.
 7. PROJECT #110 IS TO BE RECONNECTED BY EQUIPMENT MANUFACTURER.
 8. PROJECT #110 IS TO BE RECONNECTED BY EQUIPMENT MANUFACTURER.
- NOTE: ALL WORK IS TO BE INSTALLED UNLESS OTHERWISE NOTED.

ELECTRICAL SHEET INDEX:	
SHEET NUMBER	SHEET NAME
111	POWER PLAN
121	LIGHTING PLAN
131	ELECTRICAL BRACKETS
141	PROJECT ELECTRICAL NOTES
151	ELECTRICAL DETAILS

SEE SHEET 111 & 112 FOR ELECTRICAL NOTES
 SEE SHEET 111 & 112 FOR ELECTRICAL NOTES
 SEE SHEET 111 & 112 FOR ELECTRICAL NOTES

SEE PROJECT ELECTRICAL NOTES ON SHEET 141



SYMBOL LEGEND:

<ul style="list-style-type: none"> 110/125 BREAKER 120 SWITCH 125 SWITCH 130 SWITCH 135 SWITCH 140 SWITCH 145 SWITCH 150 SWITCH 155 SWITCH 160 SWITCH 165 SWITCH 170 SWITCH 175 SWITCH 180 SWITCH 185 SWITCH 190 SWITCH 195 SWITCH 200 SWITCH 205 SWITCH 210 SWITCH 215 SWITCH 220 SWITCH 225 SWITCH 230 SWITCH 235 SWITCH 240 SWITCH 245 SWITCH 250 SWITCH 255 SWITCH 260 SWITCH 265 SWITCH 270 SWITCH 275 SWITCH 280 SWITCH 285 SWITCH 290 SWITCH 295 SWITCH 300 SWITCH 305 SWITCH 310 SWITCH 315 SWITCH 320 SWITCH 325 SWITCH 330 SWITCH 335 SWITCH 340 SWITCH 345 SWITCH 350 SWITCH 355 SWITCH 360 SWITCH 365 SWITCH 370 SWITCH 375 SWITCH 380 SWITCH 385 SWITCH 390 SWITCH 395 SWITCH 400 SWITCH 405 SWITCH 410 SWITCH 415 SWITCH 420 SWITCH 425 SWITCH 430 SWITCH 435 SWITCH 440 SWITCH 445 SWITCH 450 SWITCH 455 SWITCH 460 SWITCH 465 SWITCH 470 SWITCH 475 SWITCH 480 SWITCH 485 SWITCH 490 SWITCH 495 SWITCH 500 SWITCH 505 SWITCH 510 SWITCH 515 SWITCH 520 SWITCH 525 SWITCH 530 SWITCH 535 SWITCH 540 SWITCH 545 SWITCH 550 SWITCH 555 SWITCH 560 SWITCH 565 SWITCH 570 SWITCH 575 SWITCH 580 SWITCH 585 SWITCH 590 SWITCH 595 SWITCH 600 SWITCH 605 SWITCH 610 SWITCH 615 SWITCH 620 SWITCH 625 SWITCH 630 SWITCH 635 SWITCH 640 SWITCH 645 SWITCH 650 SWITCH 655 SWITCH 660 SWITCH 665 SWITCH 670 SWITCH 675 SWITCH 680 SWITCH 685 SWITCH 690 SWITCH 695 SWITCH 700 SWITCH 705 SWITCH 710 SWITCH 715 SWITCH 720 SWITCH 725 SWITCH 730 SWITCH 735 SWITCH 740 SWITCH 745 SWITCH 750 SWITCH 755 SWITCH 760 SWITCH 765 SWITCH 770 SWITCH 775 SWITCH 780 SWITCH 785 SWITCH 790 SWITCH 795 SWITCH 800 SWITCH 805 SWITCH 810 SWITCH 815 SWITCH 820 SWITCH 825 SWITCH 830 SWITCH 835 SWITCH 840 SWITCH 845 SWITCH 850 SWITCH 855 SWITCH 860 SWITCH 865 SWITCH 870 SWITCH 875 SWITCH 880 SWITCH 885 SWITCH 890 SWITCH 895 SWITCH 900 SWITCH 905 SWITCH 910 SWITCH 915 SWITCH 920 SWITCH 925 SWITCH 930 SWITCH 935 SWITCH 940 SWITCH 945 SWITCH 950 SWITCH 955 SWITCH 960 SWITCH 965 SWITCH 970 SWITCH 975 SWITCH 980 SWITCH 985 SWITCH 990 SWITCH 995 SWITCH 1000 SWITCH 	<ul style="list-style-type: none"> 110/125 BREAKER 120 SWITCH 125 SWITCH 130 SWITCH 135 SWITCH 140 SWITCH 145 SWITCH 150 SWITCH 155 SWITCH 160 SWITCH 165 SWITCH 170 SWITCH 175 SWITCH 180 SWITCH 185 SWITCH 190 SWITCH 195 SWITCH 200 SWITCH 205 SWITCH 210 SWITCH 215 SWITCH 220 SWITCH 225 SWITCH 230 SWITCH 235 SWITCH 240 SWITCH 245 SWITCH 250 SWITCH 255 SWITCH 260 SWITCH 265 SWITCH 270 SWITCH 275 SWITCH 280 SWITCH 285 SWITCH 290 SWITCH 295 SWITCH 300 SWITCH 305 SWITCH 310 SWITCH 315 SWITCH 320 SWITCH 325 SWITCH 330 SWITCH 335 SWITCH 340 SWITCH 345 SWITCH 350 SWITCH 355 SWITCH 360 SWITCH 365 SWITCH 370 SWITCH 375 SWITCH 380 SWITCH 385 SWITCH 390 SWITCH 395 SWITCH 400 SWITCH 405 SWITCH 410 SWITCH 415 SWITCH 420 SWITCH 425 SWITCH 430 SWITCH 435 SWITCH 440 SWITCH 445 SWITCH 450 SWITCH 455 SWITCH 460 SWITCH 465 SWITCH 470 SWITCH 475 SWITCH 480 SWITCH 485 SWITCH 490 SWITCH 495 SWITCH 500 SWITCH 505 SWITCH 510 SWITCH 515 SWITCH 520 SWITCH 525 SWITCH 530 SWITCH 535 SWITCH 540 SWITCH 545 SWITCH 550 SWITCH 555 SWITCH 560 SWITCH 565 SWITCH 570 SWITCH 575 SWITCH 580 SWITCH 585 SWITCH 590 SWITCH 595 SWITCH 600 SWITCH 605 SWITCH 610 SWITCH 615 SWITCH 620 SWITCH 625 SWITCH 630 SWITCH 635 SWITCH 640 SWITCH 645 SWITCH 650 SWITCH 655 SWITCH 660 SWITCH 665 SWITCH 670 SWITCH 675 SWITCH 680 SWITCH 685 SWITCH 690 SWITCH 695 SWITCH 700 SWITCH 705 SWITCH 710 SWITCH 715 SWITCH 720 SWITCH 725 SWITCH 730 SWITCH 735 SWITCH 740 SWITCH 745 SWITCH 750 SWITCH 755 SWITCH 760 SWITCH 765 SWITCH 770 SWITCH 775 SWITCH 780 SWITCH 785 SWITCH 790 SWITCH 795 SWITCH 800 SWITCH 805 SWITCH 810 SWITCH 815 SWITCH 820 SWITCH 825 SWITCH 830 SWITCH 835 SWITCH 840 SWITCH 845 SWITCH 850 SWITCH 855 SWITCH 860 SWITCH 865 SWITCH 870 SWITCH 875 SWITCH 880 SWITCH 885 SWITCH 890 SWITCH 895 SWITCH 900 SWITCH 905 SWITCH 910 SWITCH 915 SWITCH 920 SWITCH 925 SWITCH 930 SWITCH 935 SWITCH 940 SWITCH 945 SWITCH 950 SWITCH 955 SWITCH 960 SWITCH 965 SWITCH 970 SWITCH 975 SWITCH 980 SWITCH 985 SWITCH 990 SWITCH 995 SWITCH 1000 SWITCH
--	--

POWER PLAN

SCALE: 1/8" = 1'-0"



PROGRESS OR CHECK SETS, BY THEIR NATURE, MAY BE INCOMPLETE AND ARE NOT TO BE USED FOR BIDDING OR CONSTRUCTION. CONTRACTOR RECOGNIZES HIS SOLE RESPONSIBILITY TO INCLUDE ALL CONTINGENCES FOR THESE PLANS ARE NOT FINAL UNTIL PERMIT SETS ARE ISSUED.

CA. LIC. No. 31328

Associated Professional Design
 Consulting Engineers

500 NE SPANNAHOWER BLVD, SUITE 205, BOCA RATON, FLORIDA 33431
 PHONE: 561-419-8977, INFO@APD-FLORIDAENGINEERS.COM
 MCKENNA WHITE, LLC, P.E. FLORIDA LICENSE No. 59399

CHECK SET: 05/20/16

E1.1

JUAN C. LINARES

RWB Linares
 ARCHITECTURE

PROJECT # 10824
 DATE 05/20/16
 SHEET #

1600 SOUTH DIXIE HWY., SUITE 400
 BOCA RATON, FLORIDA 33432
 PHONE 561-391-0081 FAX 561-391-0085
 EMAIL mail@rwb-arch.com

LIFE FELLOWSHIP
 11401 WEST SAMPLE ROAD
 CORAL SPRINGS, FL. 33065