

1	
2	
3	
4	
5	
6	
7	
8	
9	
10	

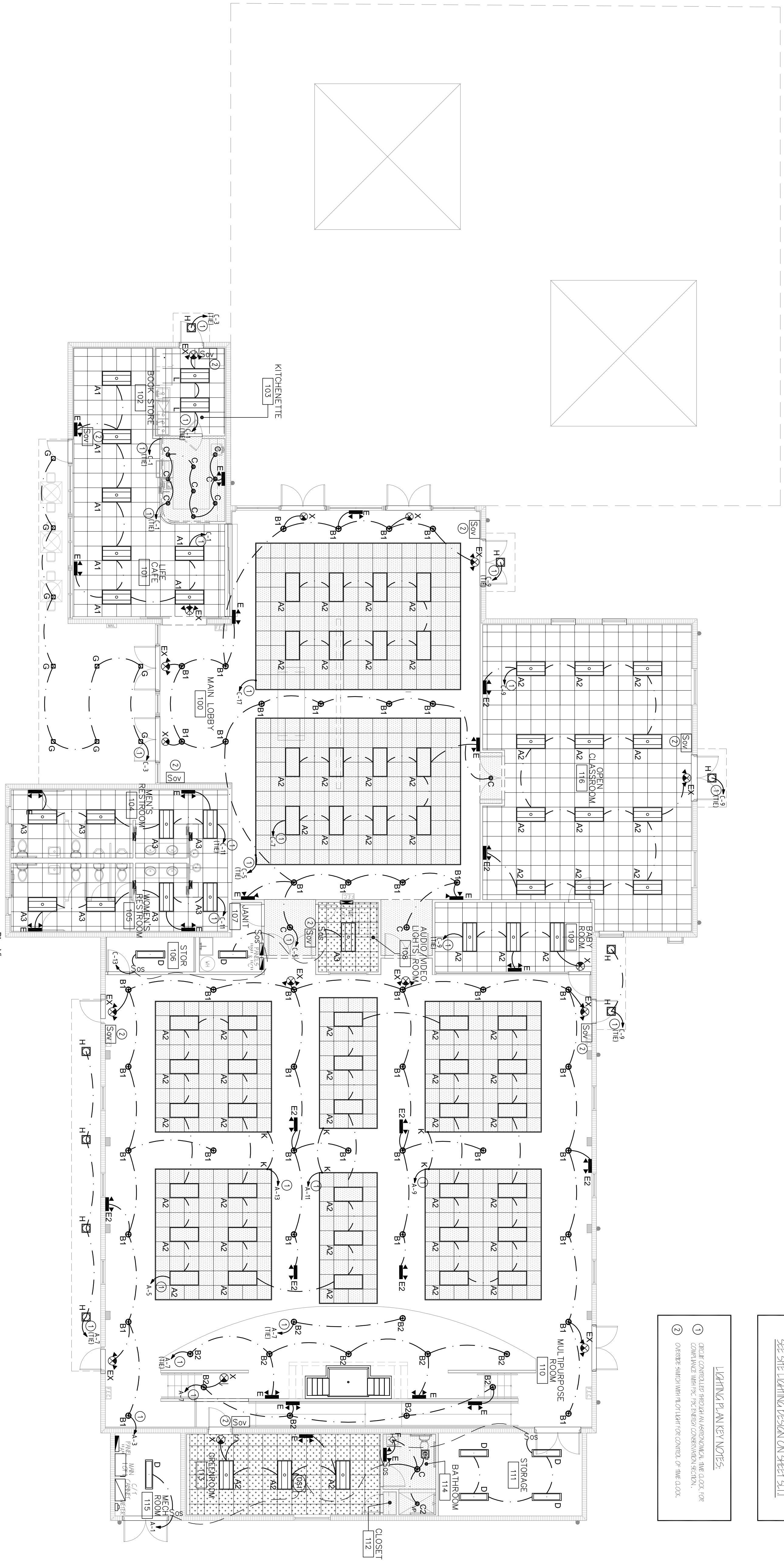
THIS DOCUMENT IS THE PROPERTY OF THE ARCHITECT AND IS TO BE USED ONLY FOR THE PROJECT AND SITE SPECIFICALLY IDENTIFIED HEREIN. IT IS NOT TO BE REPRODUCED, COPIED, OR TRANSMITTED IN ANY FORM OR BY ANY MEANS, ELECTRONIC OR MECHANICAL, INCLUDING PHOTOCOPYING, RECORDING, OR BY ANY INFORMATION STORAGE AND RETRIEVAL SYSTEM, WITHOUT THE WRITTEN PERMISSION OF THE ARCHITECT.

SEE LIGHTING NOTES, LEGEND, FINISH SCHEDULE, & C.A.C.S. ON SHEET #41

SEE SITE LIGHTING PERSON ON SHEET #11

LIGHTING PLAN KEY NOTES:

- ① DETAIL CONTROLLED BY THE ARCHITECT, SEE C.A.C.S. FOR COMPLETE WITH THE ENERGY CONSERVATION SECTION.
- ② OTHERS SHALL VERIFY WITH THE CONTRACTOR OF THE DATE.



LIGHTING PLAN

SCALE: 1/8" = 1'-0"



PROGRESS OR CHECK SETS, BY THEIR NATURE, MAY BE INCOMPLETE AND ARE NOT TO BE USED FOR BIDDING OR CONSTRUCTION. CONTRACTOR RECOGNIZES HIS SOLE RESPONSIBILITY TO INCLUDE ALL CONTINGENCIES FOR THESE PLANS ARE NOT FINAL UNTIL PERMIT SETS ARE ISSUED. THE DESIGN OF

PRIOR TO SUBMITTING THE BID, THE CONTRACTOR SHALL THOROUGHLY VERIFY ALL EXISTING CONDITIONS AND INFORMATION THE ARCHITECT AND THE ENGINEER OF ANY DISCREPANCY BETWEEN THESE DOCUMENTS AND THE EXISTING CONDITIONS AND SHALL INCLUDE IN THE BID TO CORRECT THE SAME AS DIRECTED. THE ENGINEER AND THE ARCHITECT ARE NOT RESPONSIBLE FOR ANY ADDITIONAL COSTS RESULTING FROM VERIFIABLE EXISTING CONDITIONS DISCOVERED AFTER CONTRACT HAS BEEN AWARDED. THE ENGINEER OR ARCHITECT SHALL BE RESPONSIBLE FOR REVIEW PRIOR TO INSTALLATION. NOT FOR BID UNTIL PERMIT HAS BEEN ISSUED.

CA. LIC. NO. 31328

Associated Professional Design
Consulting Engineers

300 NE SPANHAM RIVER BLVD, SUITE 205, BOCA RATON, FLORIDA 33431
PHONE: 561-492-8977, INFO@APD-ENGINEERING.COM
MARTIN WHITE, O.C.E., P.E. FLORIDA LICENSE NO. 59399

CHECK SET: 05/20/16

PROJECT # 16024
DATE 05/20/16
SHEET #

RWB Linares
ARCHITECTURE

1600 SOUTH DIXIE HWY., SUITE 400
BOCA RATON, FLORIDA 33432
PHONE 561-391-0081 FAX 561-391-0085
EMAIL mail@rwb-arch.com

LIFE FELLOWSHIP
11401 WEST SAMPLE ROAD
CORAL SPRINGS, FL. 33065

JUAN C. LINARES
E2.1

A 126000540