

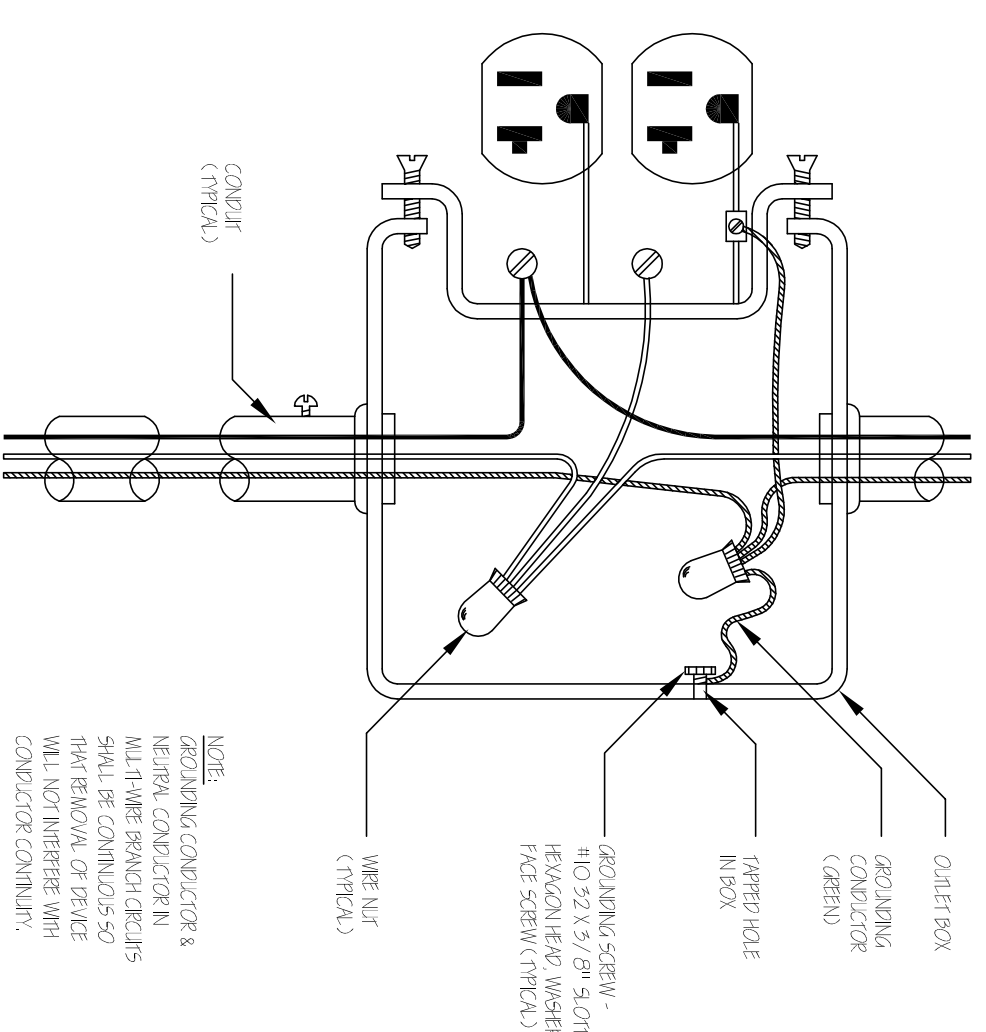
REVISIONS

1	
2	
3	
4	
5	
6	
7	
8	
9	
10	

IF THIS SHEET IS REVISED, THE REVISIONS WILL BE INDICATED BY A NUMBER IN THE REVISIONS COLUMN. THE REVISIONS WILL BE INDICATED BY A NUMBER IN THE REVISIONS COLUMN. THE REVISIONS WILL BE INDICATED BY A NUMBER IN THE REVISIONS COLUMN. THE REVISIONS WILL BE INDICATED BY A NUMBER IN THE REVISIONS COLUMN. THE REVISIONS WILL BE INDICATED BY A NUMBER IN THE REVISIONS COLUMN.

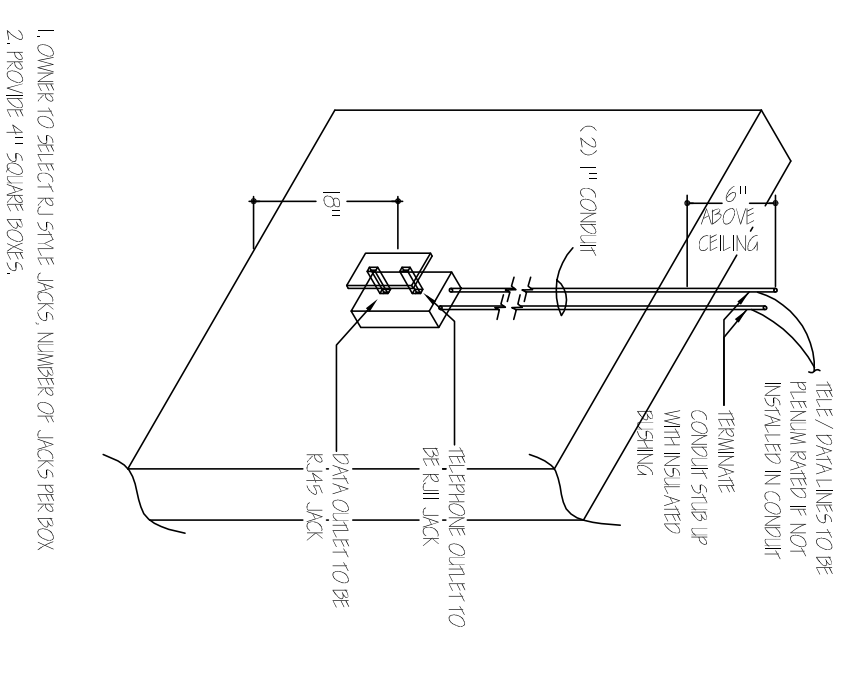
OUTLET GROUNDING DETAIL (TYPICAL)

NT15



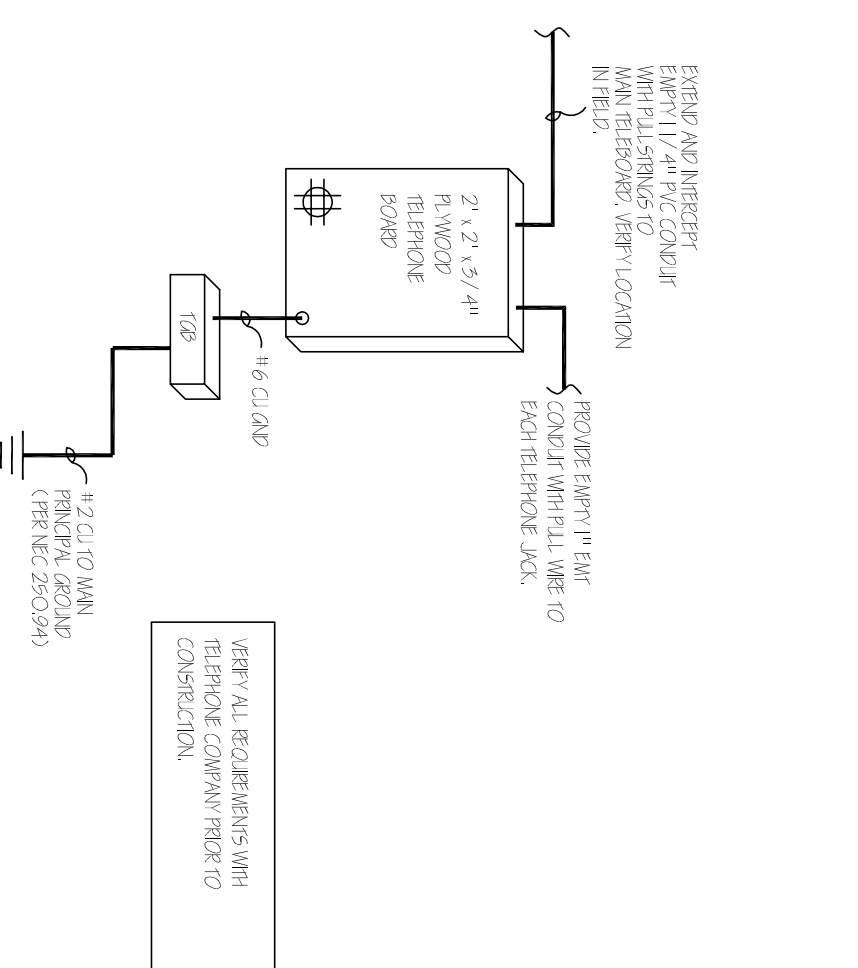
DATA TELEPHONE OUTLET

NT15



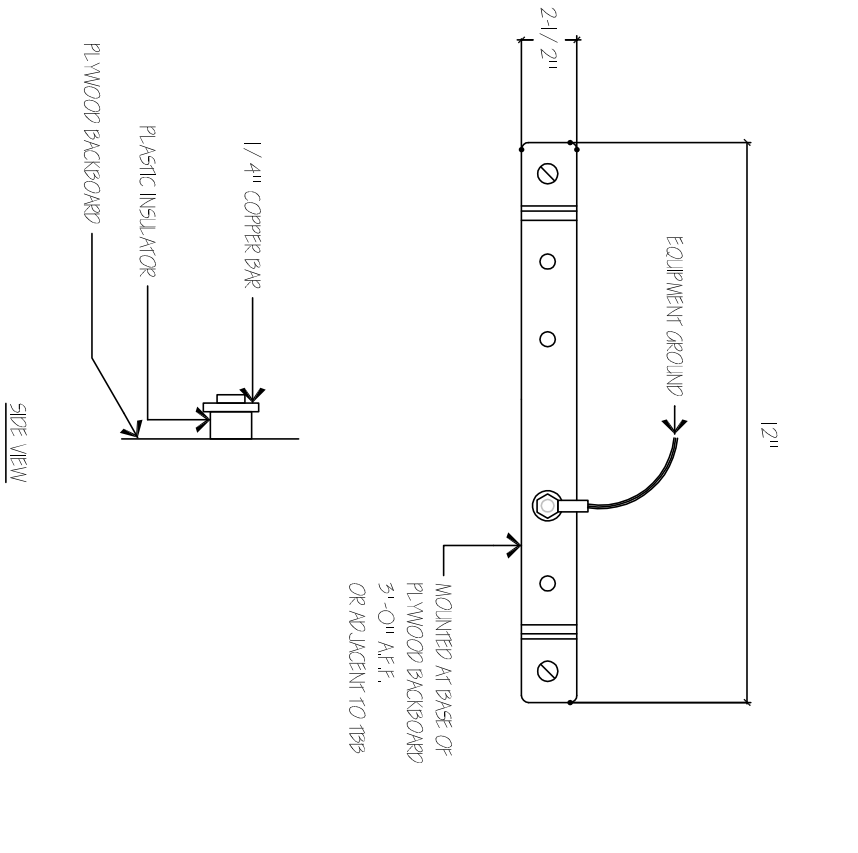
TELEPHONE RISER

NT15



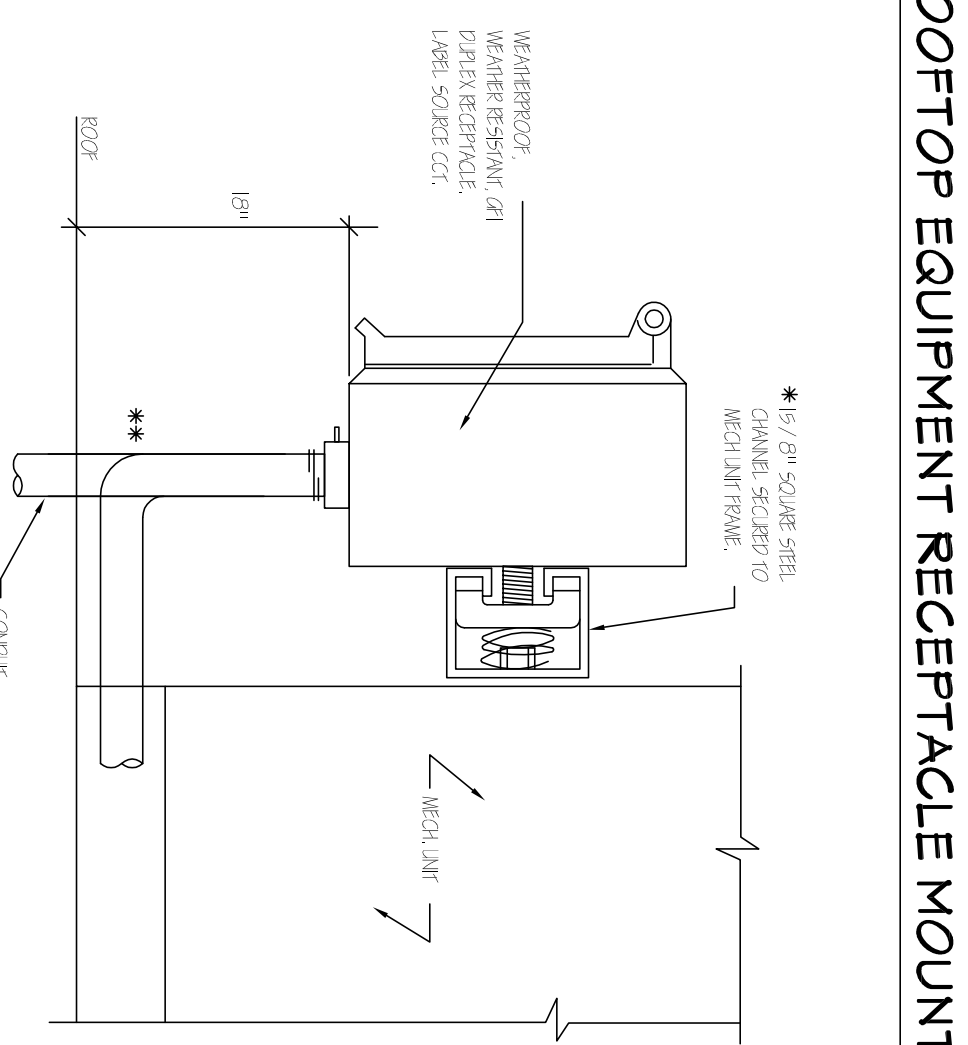
TELEPHONE GROUNDING BAR (TGB)

NT15



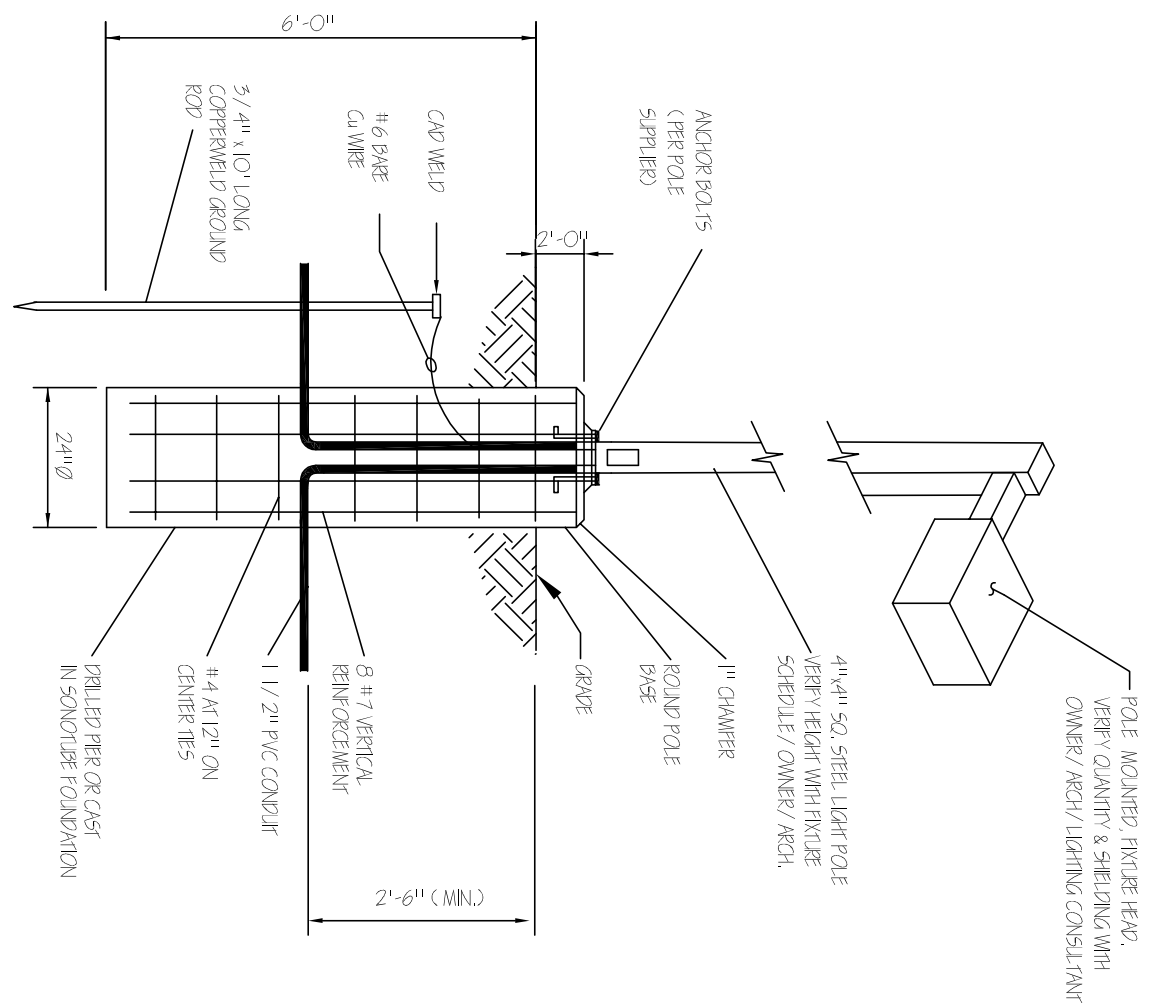
ROOFTOP EQUIPMENT RECEPTACLE MOUNTING

NT15



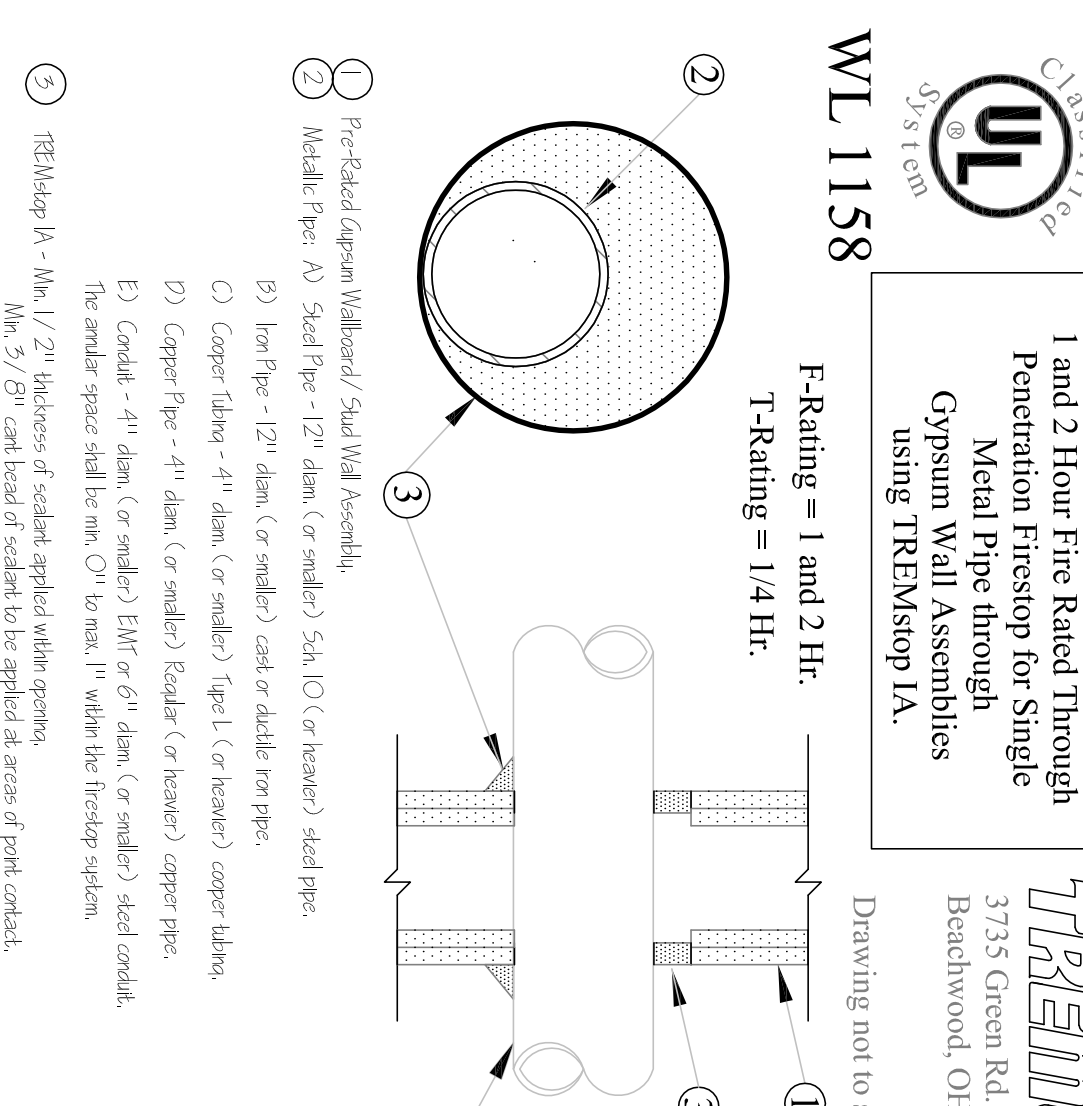
POLE MOUNT DETAIL (TYPICAL)

NT15



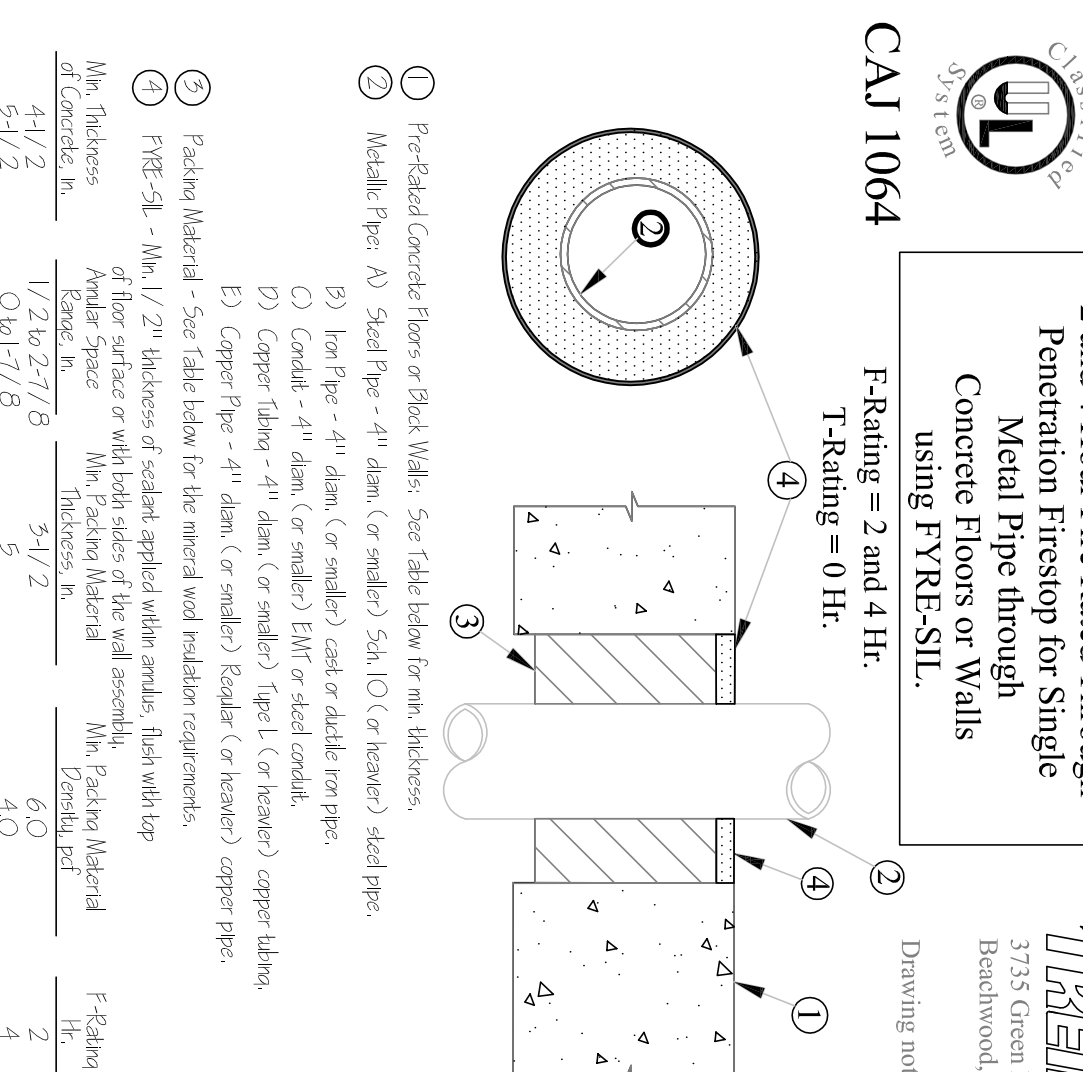
FIRE SAFE PENETRATION (1 & 2 HOUR)

NT15



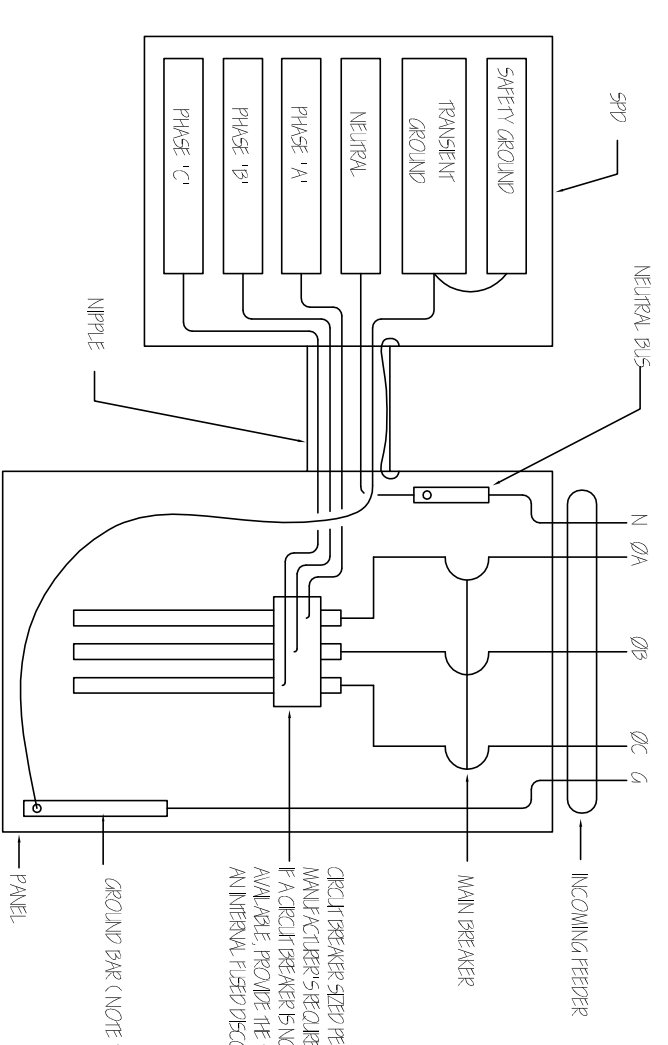
FIRE SAFE PENETRATION (2 & 4 HOUR)

NT15



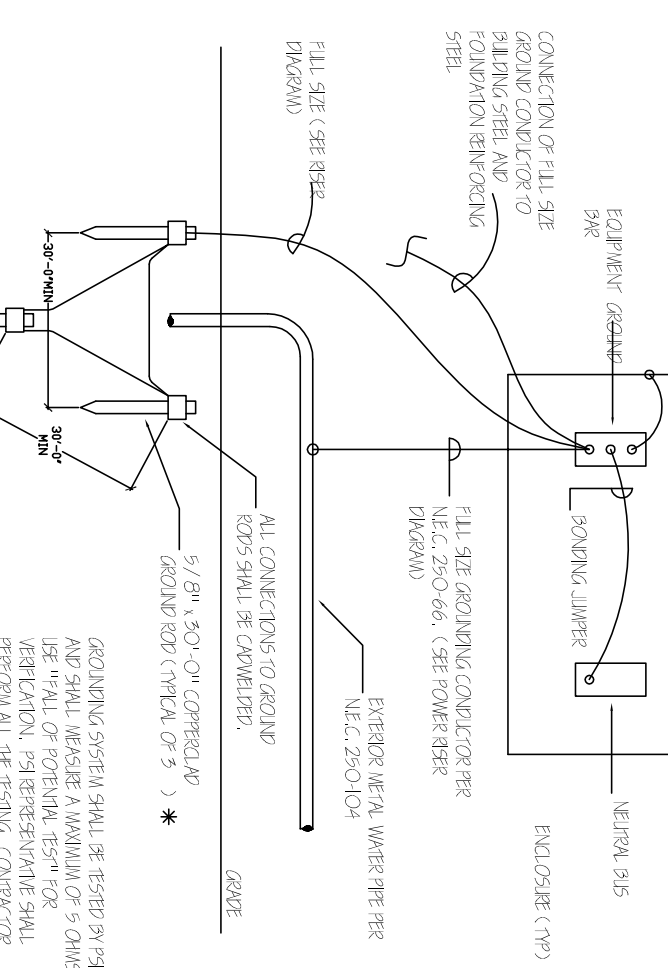
3-PHASE SPD CONNECTION

NT15



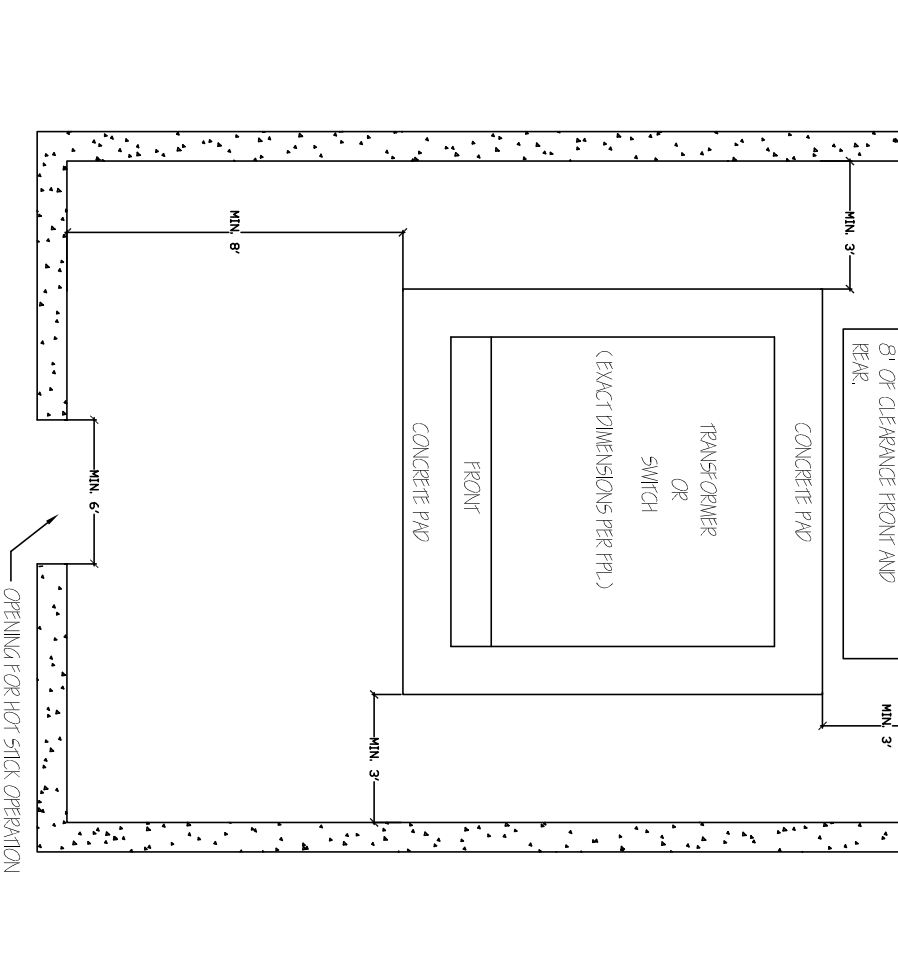
GROUNDING ELECTRODE CONDUCTOR

NT15



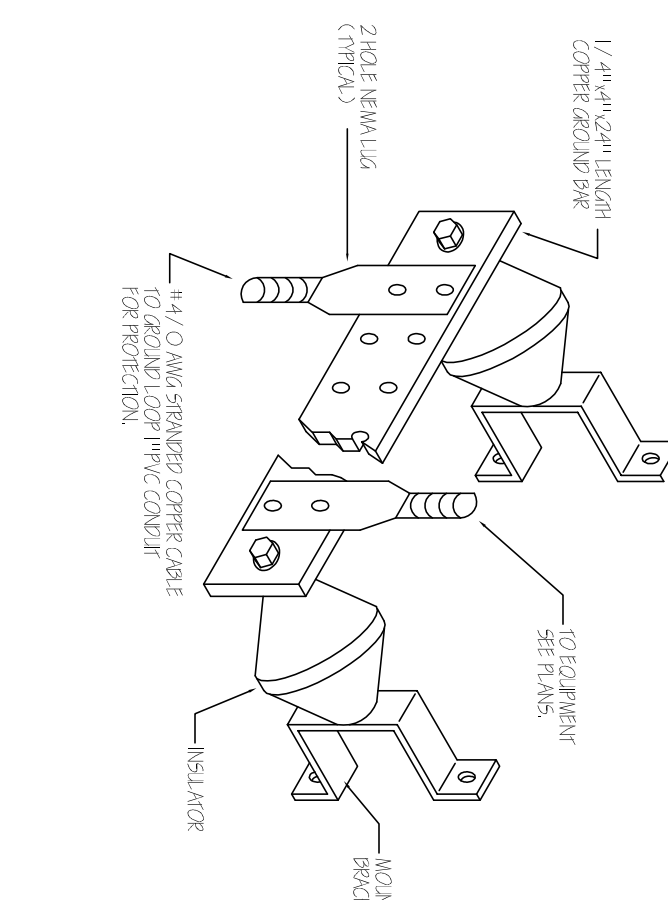
FPL PAD MOUNT TRANSFORMER CLEARANCES (DIAGRAMMATICAL ONLY)

NT15



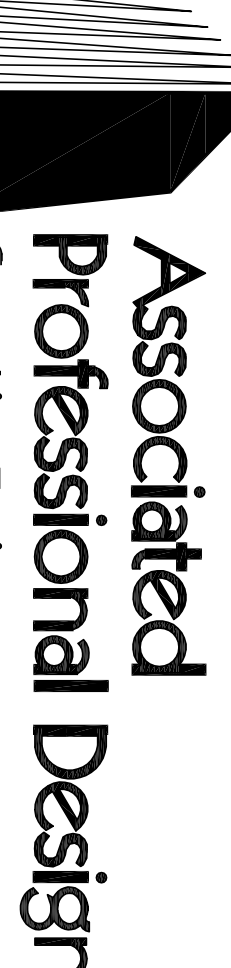
GROUND BAR

NT15



CHECK SET: 05/20/16

Associated Professional Design Consulting Engineers



500 NE SPANHAMMER BLVD, SUITE 203, BOCA RATON, FL 33431
 PHONE: 561-419-8977, INFO@APD-ENGINEERING.COM
 MERVIN WHITE, LICENSED P.E. FLORIDA LICENSE NO. 59399

CA. LIC. NO. 31328

E5.1

JUAN C. ENRIQUES

RWB
Linares
ARCHITECTURE

1600 SOUTH DIXIE HWY., SUITE 400
BOCA RATON, FLORIDA 33432
PHONE 561-391-0081 FAX 561-391-0085
EMAIL mail@rwb-arch.com

LIFE FELLOWSHIP
11401 WEST SAMPLE ROAD
CORAL SPRINGS, FL. 33065

A 129000640