

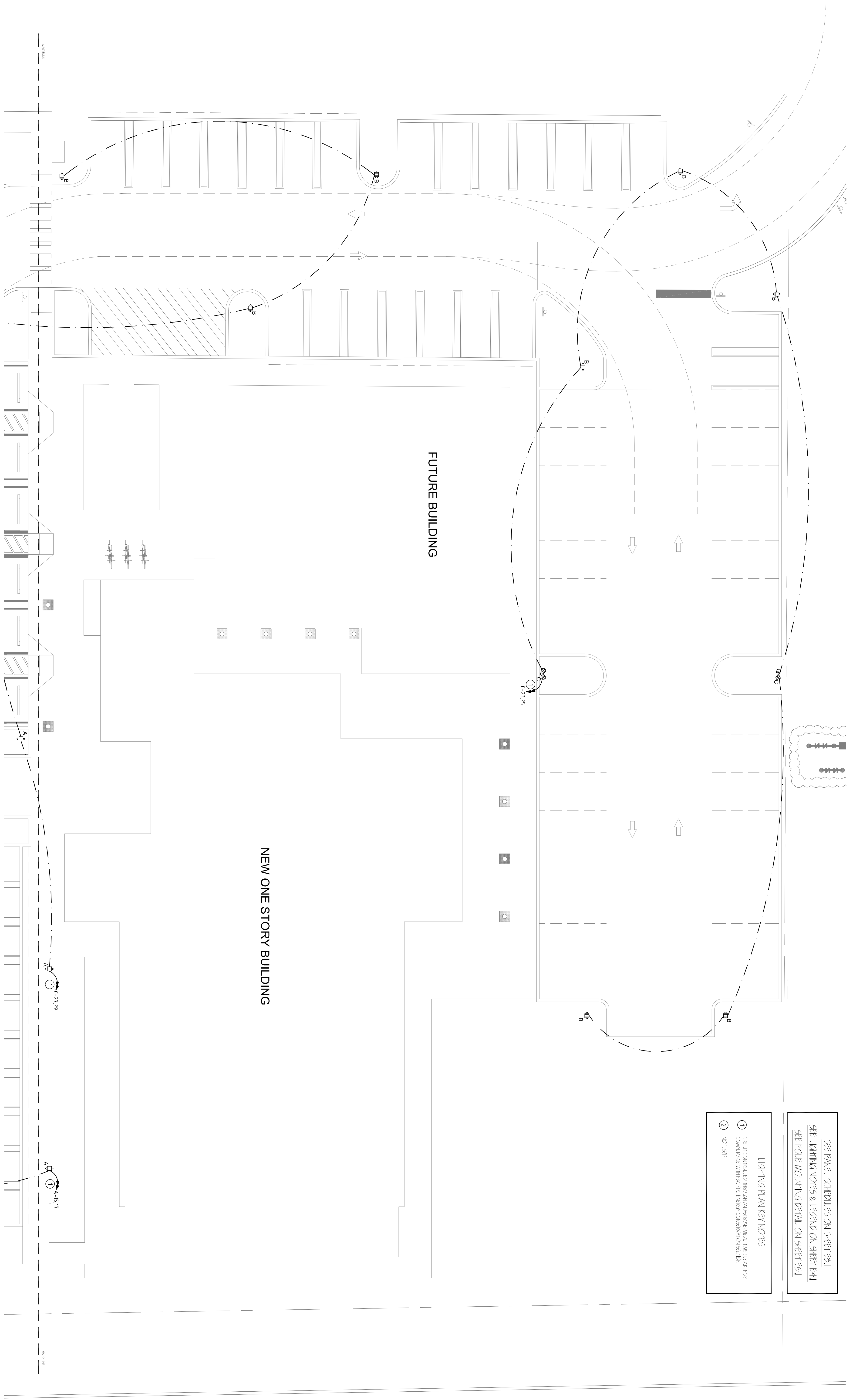
REVISIONS

1	
2	
3	
4	
5	
6	
7	
8	
9	
10	

1. ALL WORK SHALL BE ACCORDING TO THE LATEST EDITION OF THE NATIONAL ELECTRICAL CODE (NEC) AND THE NATIONAL FIRE ALARM AND SIGNAL CODE (NFPA 72).
 2. ALL WORK SHALL BE ACCORDING TO THE LATEST EDITION OF THE INTERNATIONAL ENERGY CONSERVATION CODE (IECC).
 3. ALL WORK SHALL BE ACCORDING TO THE LATEST EDITION OF THE NATIONAL ELECTRICAL CODE (NEC) AND THE NATIONAL FIRE ALARM AND SIGNAL CODE (NFPA 72).
 4. ALL WORK SHALL BE ACCORDING TO THE LATEST EDITION OF THE INTERNATIONAL ENERGY CONSERVATION CODE (IECC).
 5. ALL WORK SHALL BE ACCORDING TO THE LATEST EDITION OF THE NATIONAL ELECTRICAL CODE (NEC) AND THE NATIONAL FIRE ALARM AND SIGNAL CODE (NFPA 72).
 6. ALL WORK SHALL BE ACCORDING TO THE LATEST EDITION OF THE INTERNATIONAL ENERGY CONSERVATION CODE (IECC).
 7. ALL WORK SHALL BE ACCORDING TO THE LATEST EDITION OF THE NATIONAL ELECTRICAL CODE (NEC) AND THE NATIONAL FIRE ALARM AND SIGNAL CODE (NFPA 72).
 8. ALL WORK SHALL BE ACCORDING TO THE LATEST EDITION OF THE INTERNATIONAL ENERGY CONSERVATION CODE (IECC).
 9. ALL WORK SHALL BE ACCORDING TO THE LATEST EDITION OF THE NATIONAL ELECTRICAL CODE (NEC) AND THE NATIONAL FIRE ALARM AND SIGNAL CODE (NFPA 72).
 10. ALL WORK SHALL BE ACCORDING TO THE LATEST EDITION OF THE INTERNATIONAL ENERGY CONSERVATION CODE (IECC).

SEE PANEL SCHEDULES ON SHEET E3.1
 SEE LIGHTING NOTES & LEGEND ON SHEET E4.1
 SEE POLE MOUNTING DETAIL ON SHEET E5.1

LIGHTING PLAN KEY NOTES:
 ① DEFINE CONTROLLER METHOD IN HYBRID/COMMERCIAL, TIME CLOCK FOR COMMERCIAL WITH THE ENERGY CONSERVATION SECTION.
 ② NOTED.



SITE LIGHTING ELECTRICAL PLAN

SCALE: 3/32" = 1'-0"



Symbol	Label	Qty	Catalog Number	Description	File	Lumens	LLF	Watts
	A	14	MFG - SLC-1600VIL-5000K-TYPHIL	MOUNTED 20' AFG	SLCOK-160WI-IES2-IES	Absolute	1.00	153.6
	B	14	MFG - SLC-1600VIL-5000K-TYPHIL	MOUNTED 20' AFG	SLCOK-160WI-IES2-IES	Absolute	1.00	153.6
	C	2	MFG - SLC-90VIL-5000K-TYPHIL	MOUNTED 20' AFG	SLCOK-90WI-IES-IES		1.00	148.4
	D	0	MFG - SLC-90VIL-5000K-TYPHIL	MOUNTED 15' AFG	SLCOK-90WI-IES-IES		1.00	74.7

NEW ONE STORY BUILDING

FUTURE BUILDING

PROGRESS OR CHECK SETS, BY THEIR NATURE, MAY BE INCOMPLETE AND ARE NOT TO BE USED FOR BIDDING OR CONSTRUCTION. CONTRACTOR RECOGNIZES HIS SOLE RESPONSIBILITY TO INCLUDE ALL CONTINGENCIES FOR THESE PLANS ARE NOT FINAL UNTIL PERMIT SETS ARE ISSUED.

PRIOR TO SUBMITTING THE BID, THE CONTRACTOR SHALL FIELD VERIFY ALL EXISTING CONDITIONS AND INFORM THE ARCHITECT AND THE ENGINEER OF ANY DISCREPANCY BETWEEN THESE DOCUMENTS AND THE EXISTING CONDITIONS AND SHALL INCLUDE IN THE BID TO CORRECT THE SAME AS DIRECTED. THE ENGINEER AND THE ARCHITECT ARE NOT RESPONSIBLE FOR ANY ADDITIONAL COSTS RESULTING FROM VERIFYING EXISTING CONDITIONS DISCOVERED AFTER CONTRACT HAS BEEN AWARDED.

CONTRACTOR SHALL BE RESPONSIBLE FOR OBTAINING ALL NECESSARY PERMITS AND SHALL BE RESPONSIBLE FOR ALL COSTS OF PERMITS AND INSTALLATION. ALL CHANGES SHALL BE SUBMITTED FOR REVIEW PRIOR TO INSTALLATION. NOT FOR BID UNTIL PERMIT HAS BEEN ISSUED.

CA. LIC. No. 31328

Associated Professional Design
 Consulting Engineers

5500 NE SPANHAMER BLVD, SUITE 205, BOCA RATON, FLORIDA 33431
 PHONE: 561-498-9777, INFO@APD-ENGINEERING.COM
 MARGIN WHITE, O.C.E. P.E. FLORIDA LICENSE No. 95999

CHECK SET: 05/20/16

LIFE FELLOWSHIP
 11401 WEST SAMPLE ROAD
 CORAL SPRINGS, FL. 33065

1600 SOUTH DIXIE HWY., SUITE 400
 BOCA RATON, FLORIDA 33432
 PHONE 561-391-0081 FAX 561-391-0085
 EMAIL mail@rwb-arch.com

RWB
 Linares
 ARCHITECTURE

PROJECT # 10624
 DATE 05/20/16
 SHEET #

SL1.1
 JUAN C. DAMARS

AAS26000540