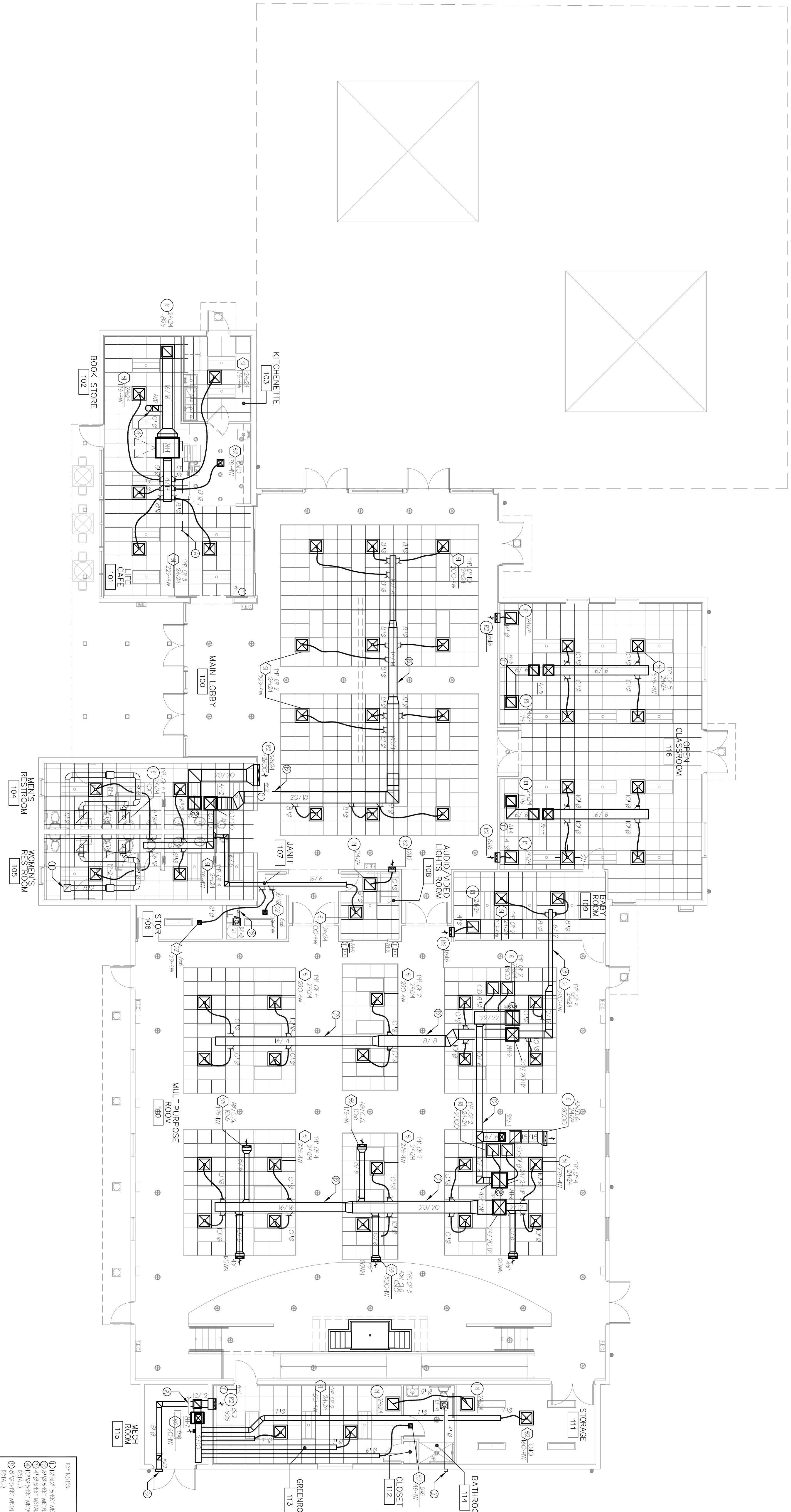


SEE SHEET M1E1.1 FOR LOCATIONS OF MECHANICAL EQUIPMENT ON ROOF

REVISIONS

1	
2	
3	
4	
5	
6	
7	
8	
9	
10	

ALL WORK SHOWN, EXCEPT WHERE NOTED OTHERWISE, IS TO BE PERFORMED IN ACCORDANCE WITH THE 2013 FLORIDA MECHANICAL CODE AND THE 2013 FLORIDA ELECTRICAL CODE, AS AMENDED. THE CONTRACTOR SHALL BE RESPONSIBLE FOR OBTAINING ALL NECESSARY PERMITS AND APPROVALS FROM THE LOCAL AUTHORITIES HAVING JURISDICTION. THE CONTRACTOR SHALL BE RESPONSIBLE FOR OBTAINING ALL NECESSARY PERMITS AND APPROVALS FROM THE LOCAL AUTHORITIES HAVING JURISDICTION. THE CONTRACTOR SHALL BE RESPONSIBLE FOR OBTAINING ALL NECESSARY PERMITS AND APPROVALS FROM THE LOCAL AUTHORITIES HAVING JURISDICTION.



MECHANICAL PLAN

SCALE: 1/8" = 1'-0"



- 1. REFER TO SHEET M1E1.1 FOR LOCATION OF MECHANICAL EQUIPMENT ON ROOF.
- 2. REFER TO SHEET M1E1.1 FOR LOCATION OF MECHANICAL EQUIPMENT ON ROOF.
- 3. REFER TO SHEET M1E1.1 FOR LOCATION OF MECHANICAL EQUIPMENT ON ROOF.
- 4. REFER TO SHEET M1E1.1 FOR LOCATION OF MECHANICAL EQUIPMENT ON ROOF.
- 5. REFER TO SHEET M1E1.1 FOR LOCATION OF MECHANICAL EQUIPMENT ON ROOF.
- 6. REFER TO SHEET M1E1.1 FOR LOCATION OF MECHANICAL EQUIPMENT ON ROOF.
- 7. REFER TO SHEET M1E1.1 FOR LOCATION OF MECHANICAL EQUIPMENT ON ROOF.
- 8. REFER TO SHEET M1E1.1 FOR LOCATION OF MECHANICAL EQUIPMENT ON ROOF.
- 9. REFER TO SHEET M1E1.1 FOR LOCATION OF MECHANICAL EQUIPMENT ON ROOF.
- 10. REFER TO SHEET M1E1.1 FOR LOCATION OF MECHANICAL EQUIPMENT ON ROOF.

CHECK SET: 05/20/16

Associated Professional Design
Consulting Engineers
500 NE SPANNER BLVD., SUITE 205, BOCA RATON, FLORIDA 33431
PHONE: 561.499.8977, INFO@APD-ENGINEERING.COM
MARKET WHITE OCE, P.E. FLORIDA LICENSE No. 95999

CA. LIC. No. 31328

PROGRESS OR CHECK SETS, BY THEIR NATURE, MAY BE INCOMPLETE AND ARE NOT TO BE USED FOR BIDDING OR CONSTRUCTION. CONTRACTOR RECOGNIZES HIS SOLE RESPONSIBILITY TO INCLUDE ALL CONTINGENCIES FOR THESE PLANS ARE NOT FINAL UNTIL PERMIT SETS ARE ISSUED. THE DESIGN OF THESE PLANS ARE NOT FINAL UNTIL PERMIT SETS ARE ISSUED.

PRIOR TO SUBMITTING THE BID, THE CONTRACTOR SHALL FIELD VERIFY ALL EXISTING CONDITIONS AND INFORM THE ARCHITECT AND THE ENGINEER OF ANY DISCREPANCY BETWEEN THESE DOCUMENTS AND THE EXISTING CONDITIONS AND SHALL INCLUDE IN THE BID TO CORRECT THE SAME AS DIRECTED. THE ENGINEER AND THE ARCHITECT ARE NOT RESPONSIBLE FOR ANY ADDITIONAL COSTS RESULTING FROM VERIFYING EXISTING CONDITIONS DISCOVERED AFTER CONTRACT HAS BEEN AWARDED. THE CONTRACTOR SHALL BE RESPONSIBLE FOR OBTAINING ALL NECESSARY PERMITS AND APPROVALS FROM THE LOCAL AUTHORITIES HAVING JURISDICTION. THE CONTRACTOR SHALL BE RESPONSIBLE FOR OBTAINING ALL NECESSARY PERMITS AND APPROVALS FROM THE LOCAL AUTHORITIES HAVING JURISDICTION. NOT FOR BID UNTIL PERMIT HAS BEEN ISSUED.

M1.1
JUAN C. LINARES

RWB Linares
ARCHITECTURE
1600 SOUTH DIXIE HWY., SUITE 400
BOCA RATON, FLORIDA 33432
PHONE 561-391-0081 FAX 561-391-0085
EMAIL mail@rwb-arch.com

PROJECT # 16024
DATE 05/20/16
SHEET #

A 258000640