

REVISIONS

1	
2	
3	
4	
5	
6	
7	
8	
9	
10	

IF THIS SHEET IS REVISED, THE REVISIONS SHALL BE IDENTIFIED BY THE DATE AND THE NAME OF THE ENGINEER OR ARCHITECT. ALL REVISIONS SHALL BE IDENTIFIED BY THE DATE AND THE NAME OF THE ENGINEER OR ARCHITECT. ALL REVISIONS SHALL BE IDENTIFIED BY THE DATE AND THE NAME OF THE ENGINEER OR ARCHITECT.

EQUIPMENT DISCONNECTS:

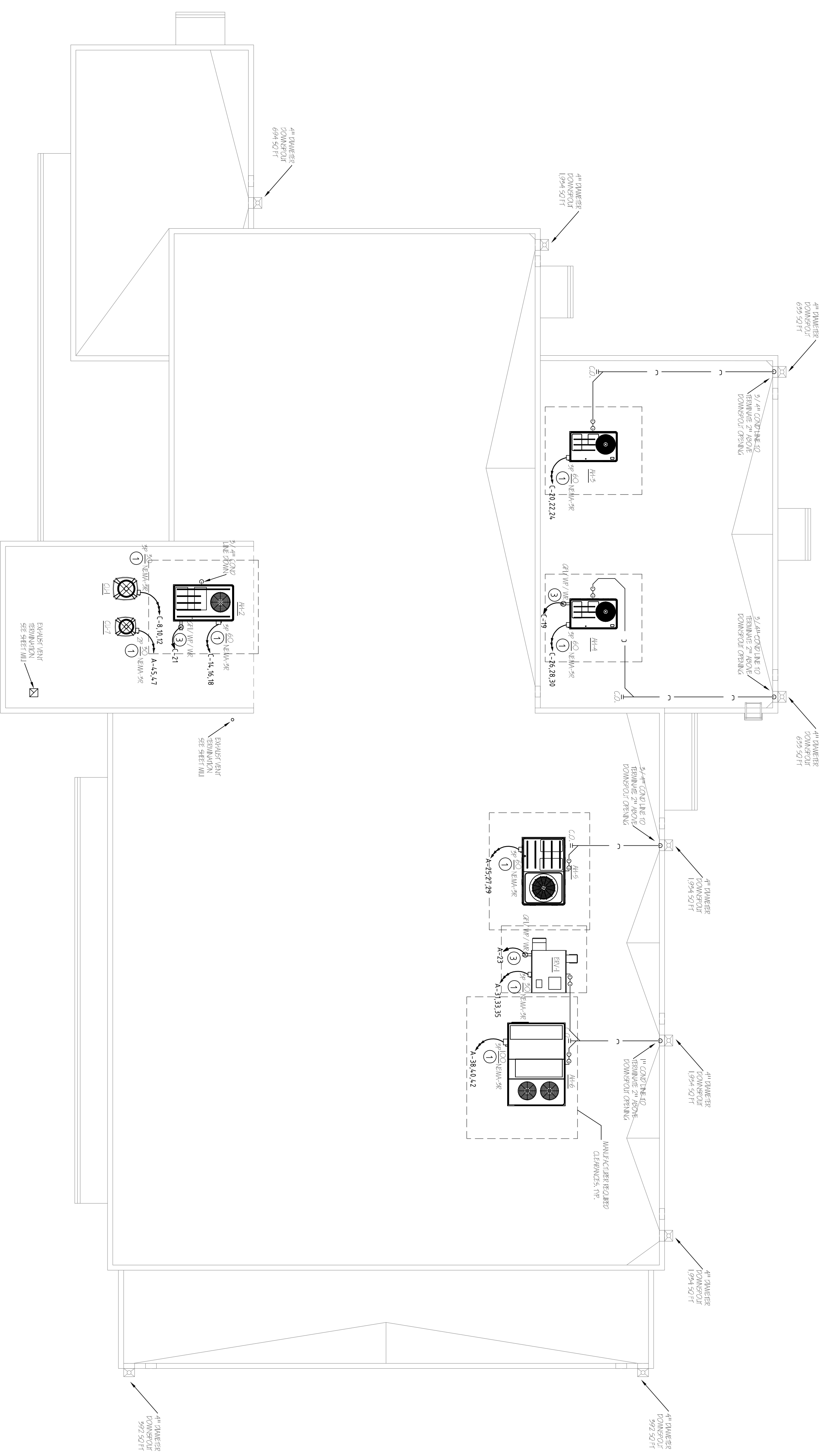
CONTRACTOR TO MAINTAIN 150' MIN. AND 2'-0" SEPT. CLEARANCE FROM ALL MECHANICAL EQUIPMENT. EQUIPMENT CONNECTOR SHALL BE SET AT MINIMUM DISTANCE OF 18" FROM THE EQUIPMENT.

ELECTRICAL PLANNING NOTES:

1. PROVIDE 150'-0" SEPT. CLEARANCE FROM ALL MECHANICAL EQUIPMENT.
2. NOT USED.
3. PROVIDE 18" MIN. SEPT. CLEARANCE FROM ALL MECHANICAL EQUIPMENT. SEE ELECTRICAL MECHANICAL PLANNING SHEETS FOR MEANING OF THE NOTATIONS.

MECHANICAL NOTES:

- SEE MECHANICAL PLANNING SHEETS FOR MECHANICAL EQUIPMENT AND AIR INTAKE SPECIFICATIONS.
- MAINTAIN MINIMUM 2'-0" SEPT. CLEARANCE FROM ALL MECHANICAL EQUIPMENT.
- SEE MECHANICAL PLANNING SHEETS FOR MEANING OF THE NOTATIONS.



MEP ROOF PLAN
SCALE: 1/8" = 1'-0"



PROGRESS OR CHECK SETS, BY THEIR NATURE, MAY BE INCOMPLETE AND ARE NOT TO BE USED FOR BIDDING OR CONSTRUCTION. CONTRACTOR RECOGNIZES HIS SOLE RESPONSIBILITY TO INCLUDE ALL CONTINGENCIES FOR THESE PLANS ARE NOT FINAL UNTIL PERMIT SETS ARE ISSUED.

PRIOR TO SUBMITTING THE BID, THE CONTRACTOR SHALL FIELD VERIFY ALL EXISTING CONDITIONS AND INFORM THE ARCHITECT AND THE ENGINEER OF ANY DISCREPANCY BETWEEN THESE DOCUMENTS AND THE EXISTING CONDITIONS AND SHALL INCLUDE IN THE BID TO CORRECT THE SAME AS DIRECTED. THE ENGINEER AND THE ARCHITECT ARE NOT RESPONSIBLE FOR ANY ADDITIONAL COSTS RESULTING FROM VERIFYING EXISTING CONDITIONS DISCOVERED AFTER CONTRACT HAS BEEN AWARDED. THE ENGINEER OF RECORD, ALL CHANGES SHALL BE SUBMITTED FOR REVIEW PRIOR TO INSTALLATION. NOT FOR BID UNTIL PERMIT HAS BEEN ISSUED.

CA. LIC. No. 31328

Associated Professional Design
Consulting Engineers

500 NE SPANHAMER BLVD, SUITE 205, BOCA RATON, FLORIDA 33431
PHONE: 561-498-8777, INFO@APD-ENGINEERING.COM
MCKENNA WHITE LODGE, P.E. FLORIDA LICENSE No. 59999

CHECK SET: 05/20/16

MEP1.1
JUAN C. LINARES

1600 SOUTH DIXIE HWY., SUITE 400
BOCA RATON, FLORIDA 33432
PHONE 561-391-0081 FAX 561-391-0085
EMAIL mail@rwb-arch.com

RWB
Linares
ARCHITECTURE

PROJECT # 16024
DATE 05/20/16
SHEET #

A 125000640