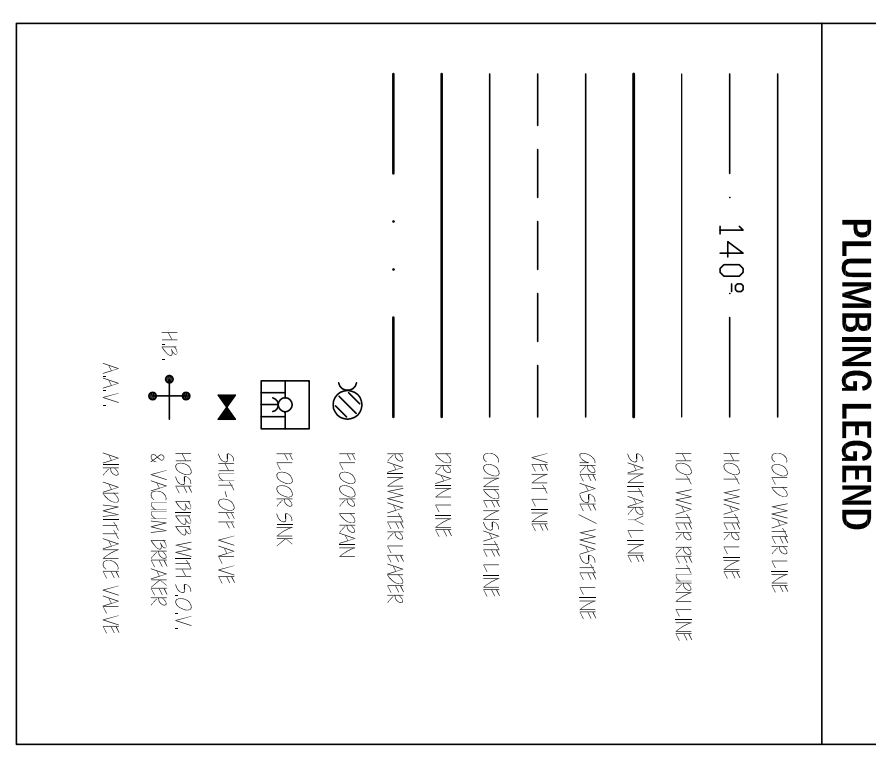


REVISIONS

1	
2	
3	
4	
5	
6	
7	
8	
9	
10	

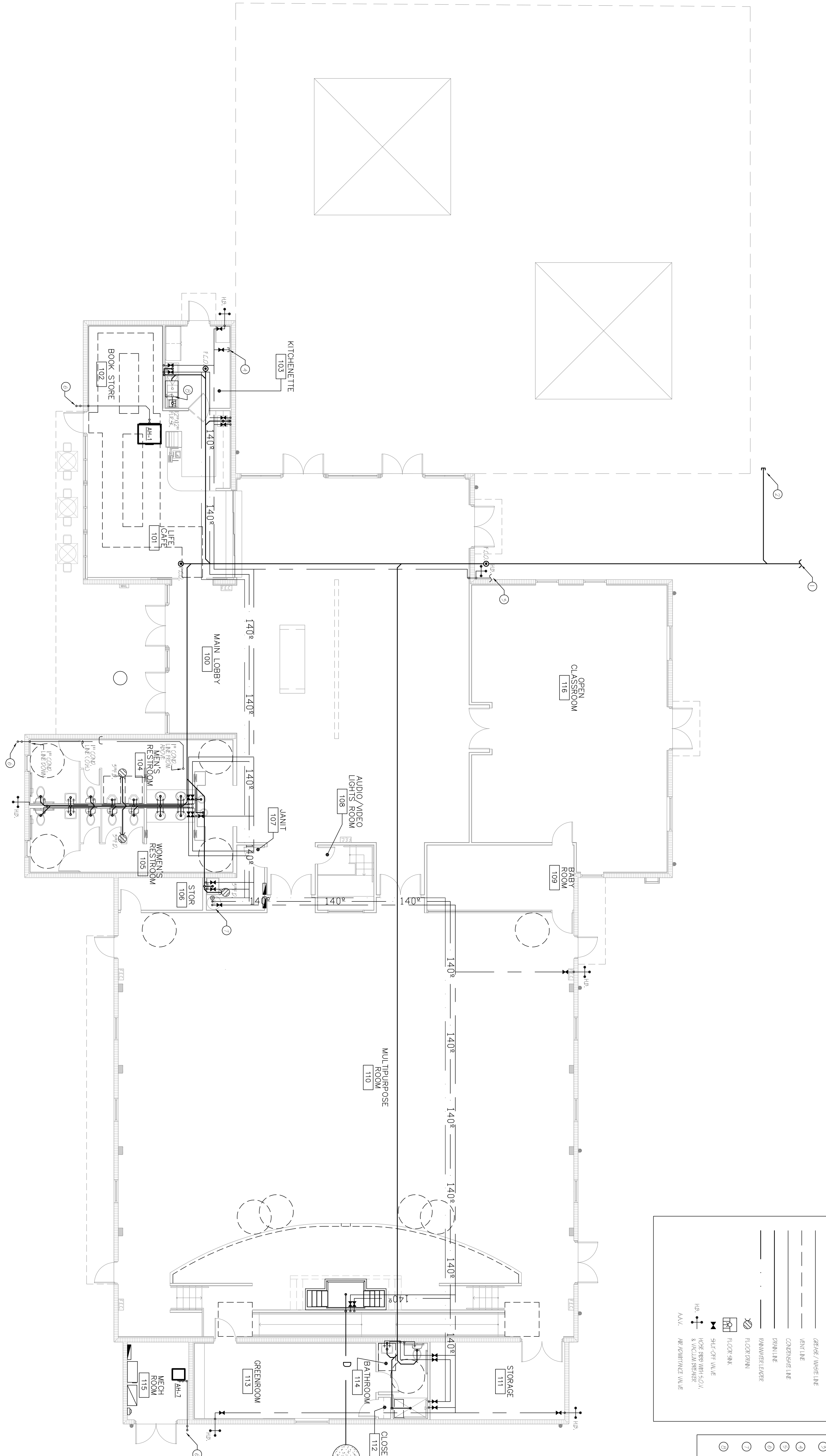
1. ALL WORK SHALL BE ACCORDING TO THE LATEST EDITION OF THE INTERNATIONAL PLUMBING CODE (IPC) AND THE NATIONAL PLUMBING CODE (NPC).  
 2. ALL WORK SHALL BE ACCORDING TO THE LATEST EDITION OF THE NATIONAL FIRE ALARM AND SIGNALING CODE (NFPA 72).  
 3. ALL WORK SHALL BE ACCORDING TO THE LATEST EDITION OF THE NATIONAL ELECTRICAL CODE (NEC).  
 4. ALL WORK SHALL BE ACCORDING TO THE LATEST EDITION OF THE NATIONAL MECHANICAL CODE (NMC).  
 5. ALL WORK SHALL BE ACCORDING TO THE LATEST EDITION OF THE NATIONAL PLUMBING AND HEATING CODE (NPHC).  
 6. ALL WORK SHALL BE ACCORDING TO THE LATEST EDITION OF THE NATIONAL PLUMBING AND MECHANICAL CODE (NPMHC).  
 7. ALL WORK SHALL BE ACCORDING TO THE LATEST EDITION OF THE NATIONAL PLUMBING AND MECHANICAL CODE (NPMHC).  
 8. ALL WORK SHALL BE ACCORDING TO THE LATEST EDITION OF THE NATIONAL PLUMBING AND MECHANICAL CODE (NPMHC).  
 9. ALL WORK SHALL BE ACCORDING TO THE LATEST EDITION OF THE NATIONAL PLUMBING AND MECHANICAL CODE (NPMHC).  
 10. ALL WORK SHALL BE ACCORDING TO THE LATEST EDITION OF THE NATIONAL PLUMBING AND MECHANICAL CODE (NPMHC).

PLUMBING LEGEND



PLUMBING KEY NOTES:

- NEW 1/2" SHUT-OFF VALVE TO SERVICE AREA, SEE EXACT LOCATION ON DRAWING.
- NEW 1/2" SHUT-OFF VALVE TO SERVICE AREA, SEE EXACT LOCATION ON DRAWING.
- NEW 1/2" SHUT-OFF VALVE TO SERVICE AREA, SEE EXACT LOCATION ON DRAWING.
- NEW 1/2" SHUT-OFF VALVE TO SERVICE AREA, SEE EXACT LOCATION ON DRAWING.
- NEW 1/2" SHUT-OFF VALVE TO SERVICE AREA, SEE EXACT LOCATION ON DRAWING.
- NEW 1/2" SHUT-OFF VALVE TO SERVICE AREA, SEE EXACT LOCATION ON DRAWING.
- NEW 1/2" SHUT-OFF VALVE TO SERVICE AREA, SEE EXACT LOCATION ON DRAWING.
- NEW 1/2" SHUT-OFF VALVE TO SERVICE AREA, SEE EXACT LOCATION ON DRAWING.
- NEW 1/2" SHUT-OFF VALVE TO SERVICE AREA, SEE EXACT LOCATION ON DRAWING.
- NEW 1/2" SHUT-OFF VALVE TO SERVICE AREA, SEE EXACT LOCATION ON DRAWING.



PLUMBING PLAN

SCALE: 1/8" = 1'-0"



PROGRESS OR CHECK SETS, BY THEIR NATURE, MAY BE INCOMPLETE AND ARE NOT TO BE USED FOR BIDDING OR CONSTRUCTION. CONTRACTOR RECOGNIZES HIS SOLE RESPONSIBILITY TO INCLUDE ALL CONTINGENCIES FOR THESE PLANS ARE NOT FINAL UNTIL PERMIT SETS ARE ISSUED.

PRIOR TO SUBMITTING THE BID, THE CONTRACTOR SHALL FIELD VERIFY ALL EXISTING CONDITIONS AND INFORM THE ARCHITECT AND THE ENGINEER OF ANY DISCREPANCY BETWEEN THESE DOCUMENTS AND THE EXISTING CONDITIONS AND SHALL INCLUDE IN THE BID TO CORRECT THE SAME AS DIRECTED. FROM VERIFIABLE EXISTING CONDITIONS DISCOVERED AFTER CONTRACT HAS BEEN AWARDED, THE ENGINEER OR RECORD. ALL CHANGES SHALL BE SUBMITTED FOR REVIEW PRIOR TO INSTALLATION. NOT FOR BID UNTIL PERMIT HAS BEEN ISSUED.

CA. LIC. NO. 31328

**Associated Professional Design**  
 Consulting Engineers  
 5500 NE SPANHAM RIVER BLVD., SUITE 202, BOCA RATON, FL 33494  
 PHONE: 561-492-8977, INFO@APD-ENGINEERING.COM  
 MCKENNA WHITE LODGE, P.E. FLORIDA LICENSE NO. 593999

CHECK SET: 05/20/16

PROJECT # 10824  
 DATE 05/20/16  
 SHEET #

**RWB Linares ARCHITECTURE**  
 1600 SOUTH DIXIE HWY., SUITE 400  
 BOCA RATON, FLORIDA 33432  
 PHONE 561-391-0081 FAX 561-391-0085  
 EMAIL mail@rwb-arch.com

LIFE FELLOWSHIP  
 11401 WEST SAMPLE ROAD  
 CORAL SPRINGS, FL. 33065

P1.1

JUAN C. LINARES

AAS9000540